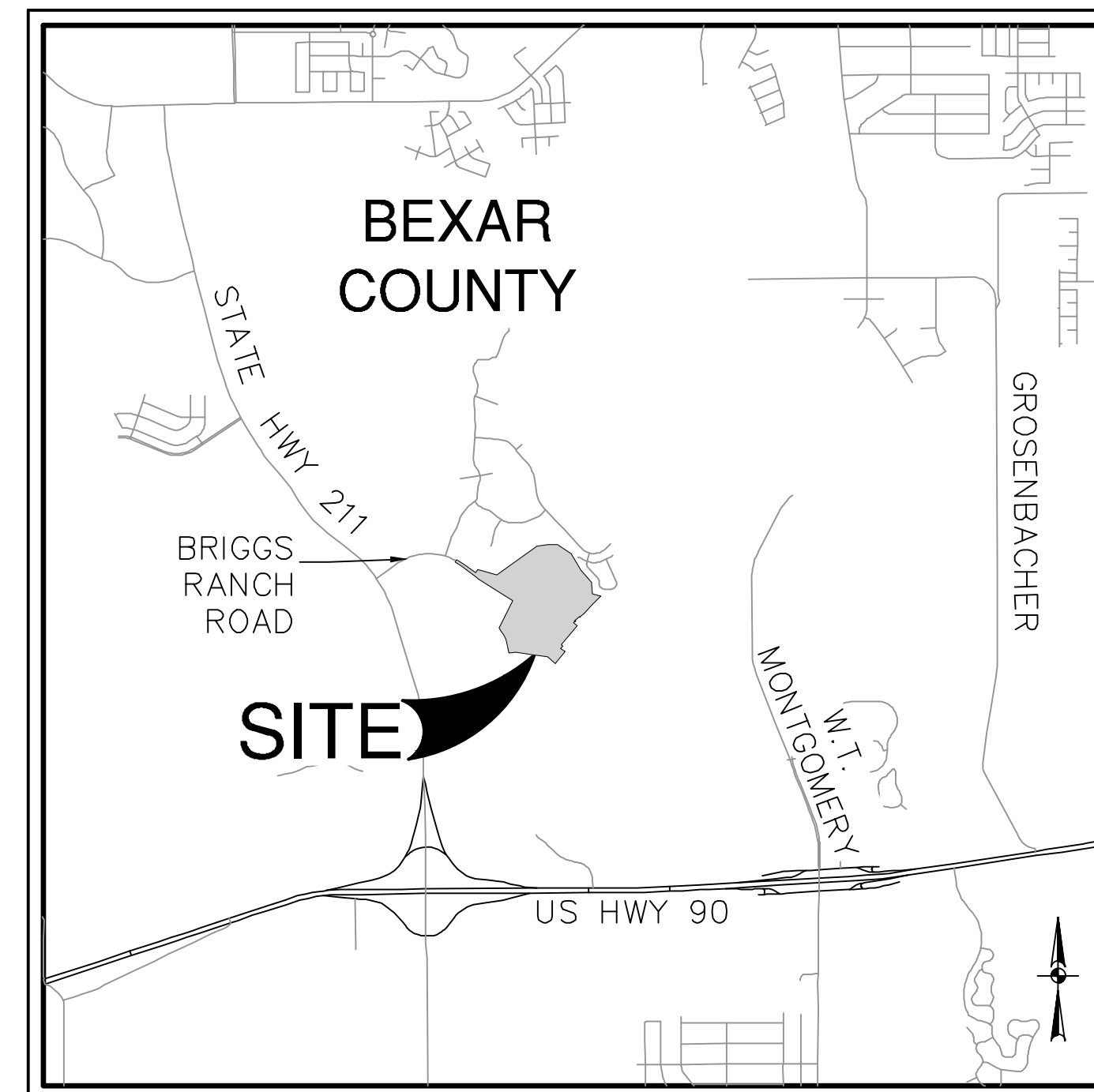


BRE PHASE 1, UNIT 1

SAN ANTONIO, TEXAS

OVERALL 16 INCH WATER DISTRIBUTION PLAN



LOCATION MAP
NOT-TO-SCALE

PREPARED FOR:

HDC HWY 211, LTD 45
NE LOOP 410, SUITE 225
SAN ANTONIO, TEXAS 78216

MAY 2024

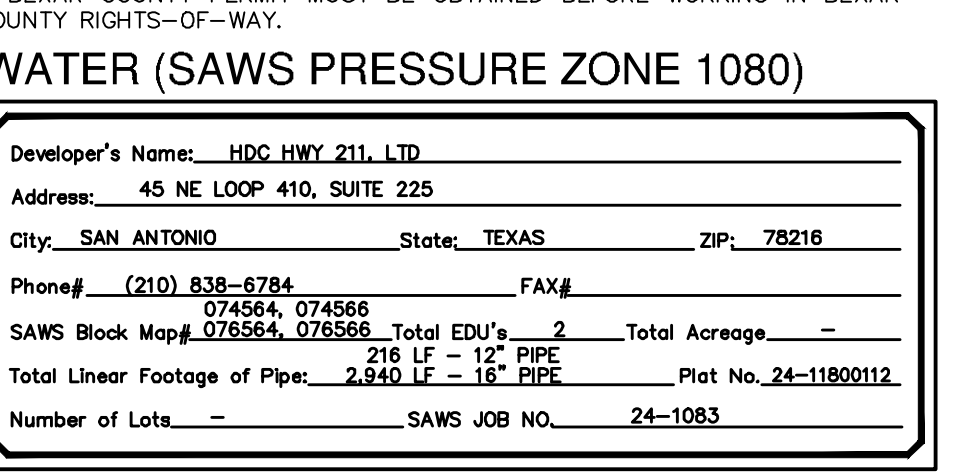
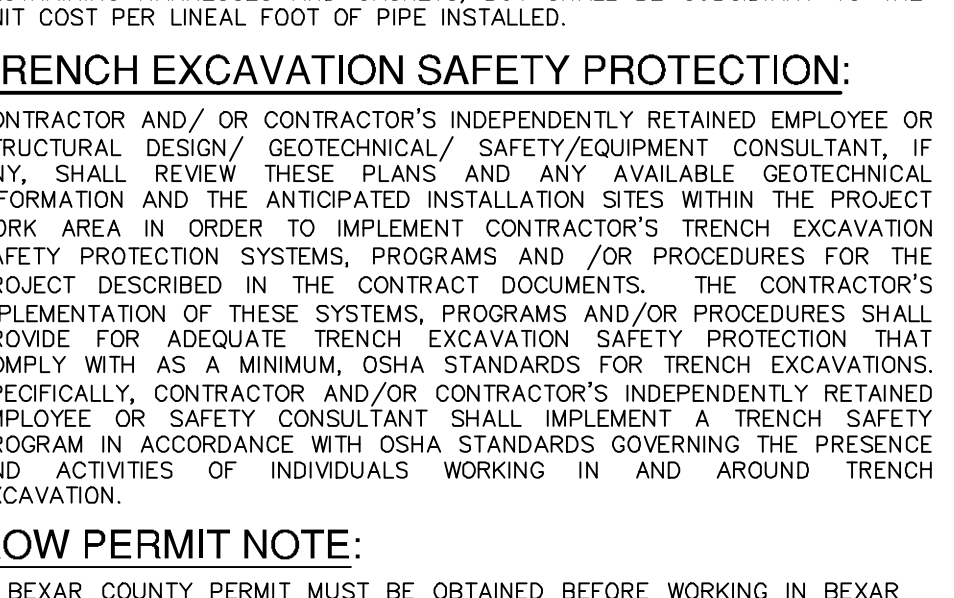
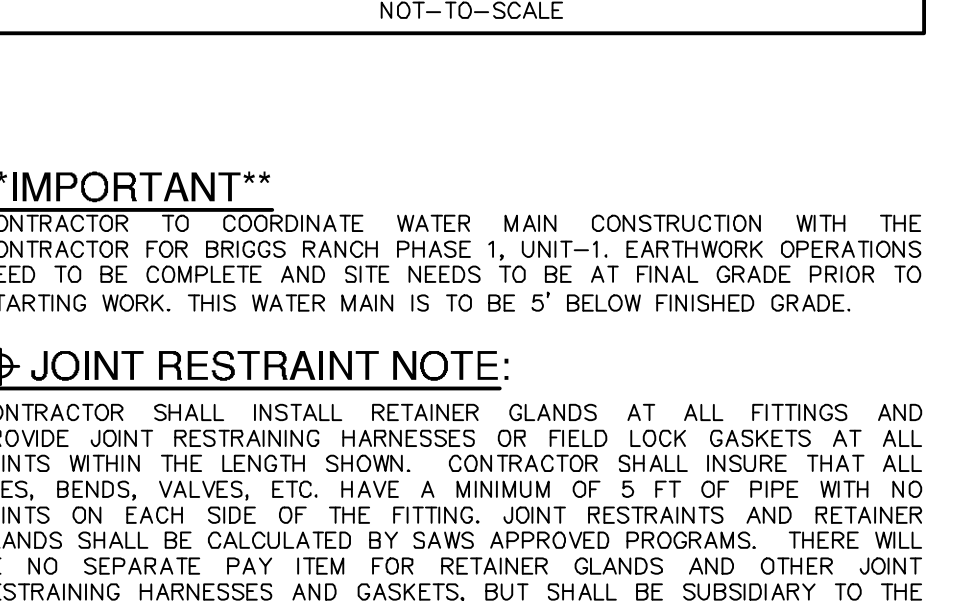
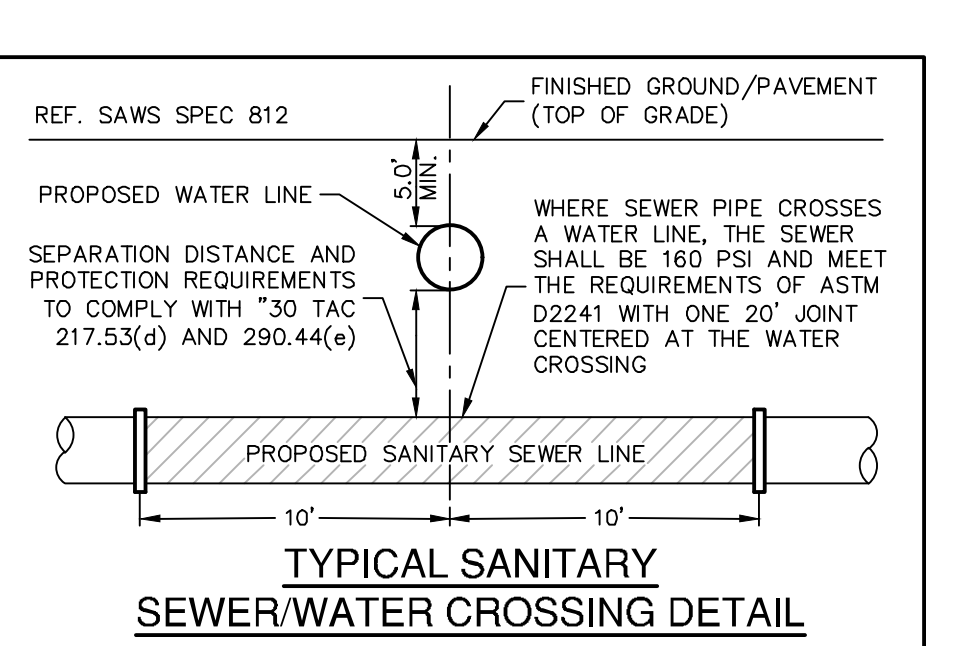
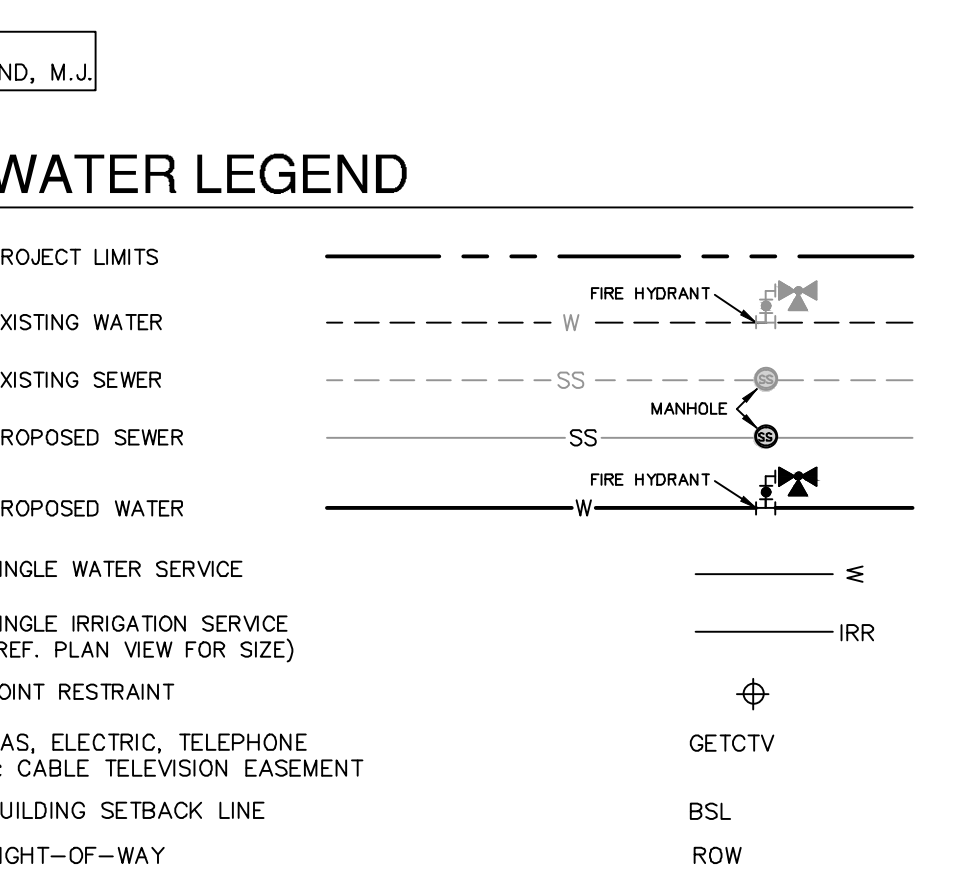
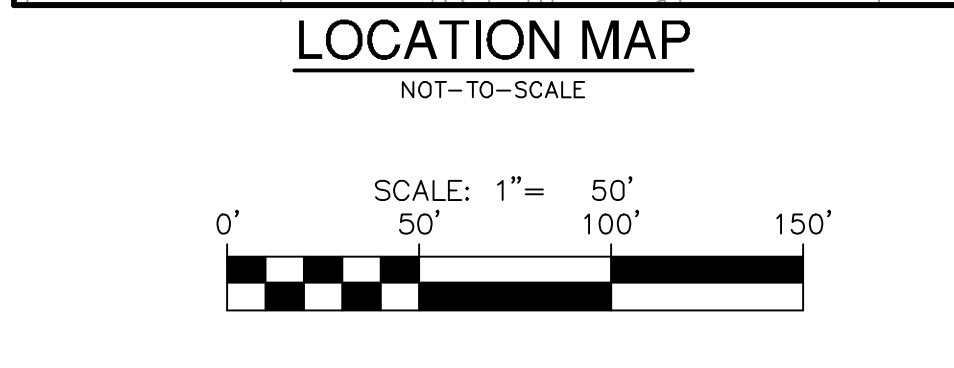
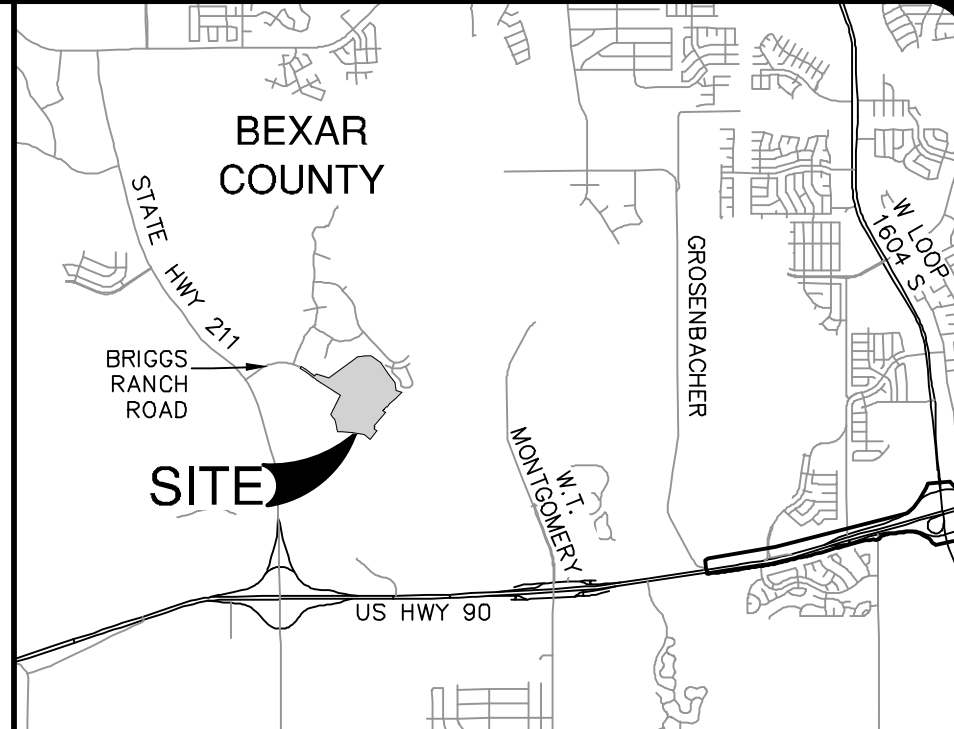
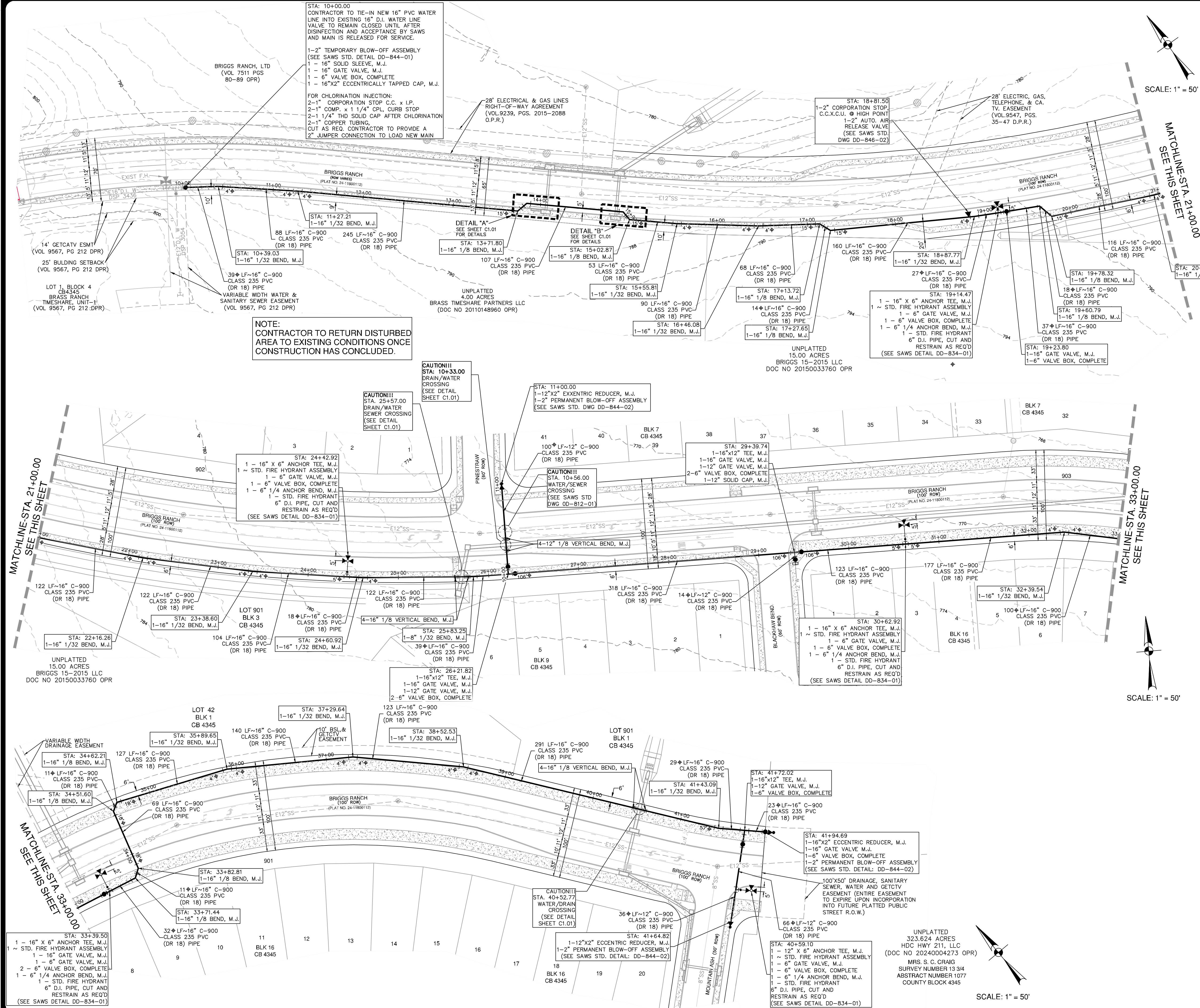


Sheet List Table	
Sheet Number	Sheet Title
C0.00	COVER SHEET
C1.00	OVERALL 16 INCH WATER DISTRIBUTION PLAN
C1.01	16 INCH WATER DISTRIBUTION NOTES
C1.02	16 INCH WATER DISTRIBUTION DETAILS

WATER (SAWS PRESSURE ZONE 1080)

Developer's Name:	HDC HWY 211, LTD		
Address:	45 NE LOOP 410, SUITE 225		
City:	SAN ANTONIO	State:	TEXAS
Phone#	(210) 838-6784	FAX#	
SAWS Block Map#	074564, 074566	Total EDU's	2
Total Linear Footage of Pipe:	2,640 LF	216 LF - 12" PIPE	
Number of Lots:		SAWS JOB NO.	24-1083

SHEET C0.00



DATE

NO. REVISION

Matthew Geistweidt
Professional Engineer
6-14-2024

PAPE-DAWSON
ENGINEERS

2000 NW LOOP 410 | SAN ANTONIO, TX 78213 | 210.375.9000
TEXAS ENGINEERING FIRM #470 | TEXAS SURVEYING FIRM #1002890

PLAT NO. 24-11800112

JOB NO. 11412-12

DATE MAY 2024

DRAWN SSC

CHECKED SSC

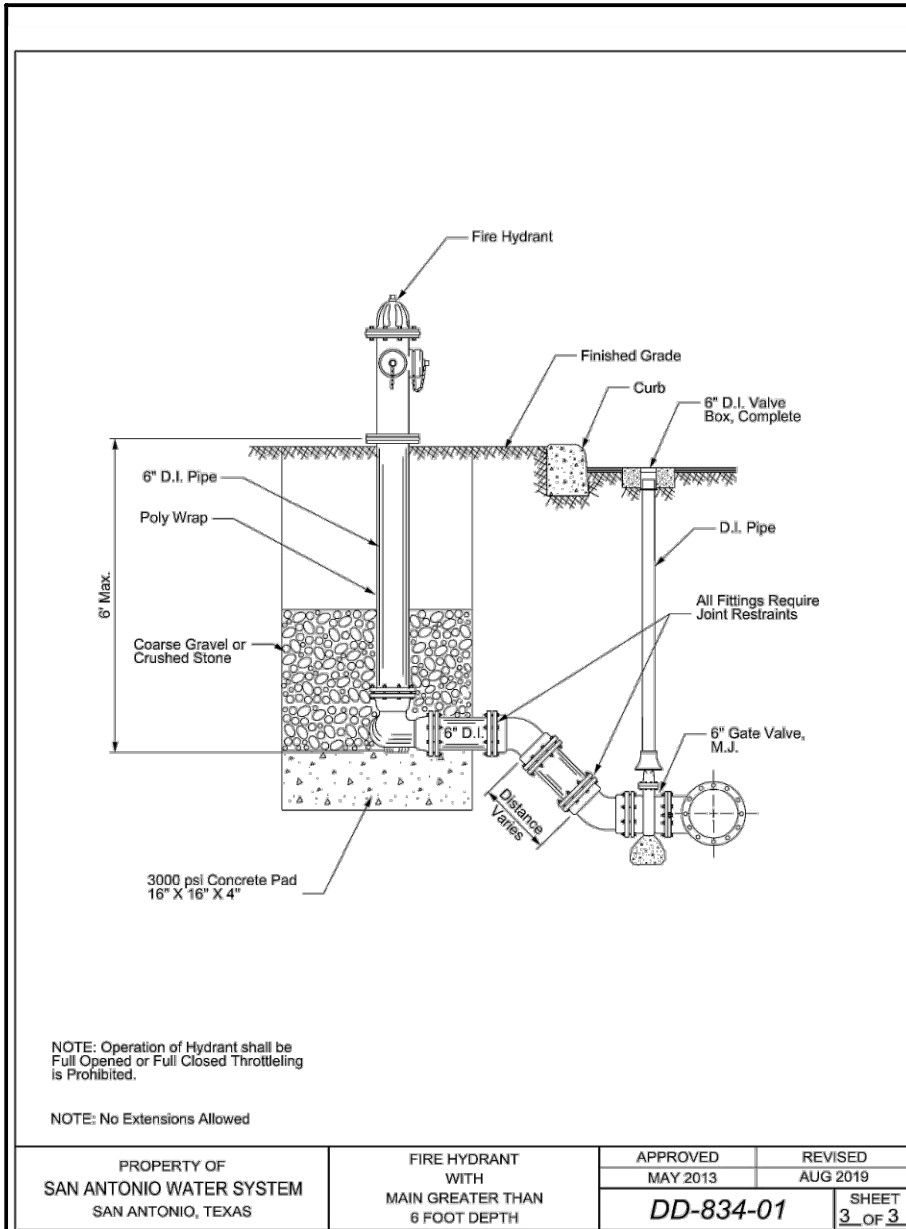
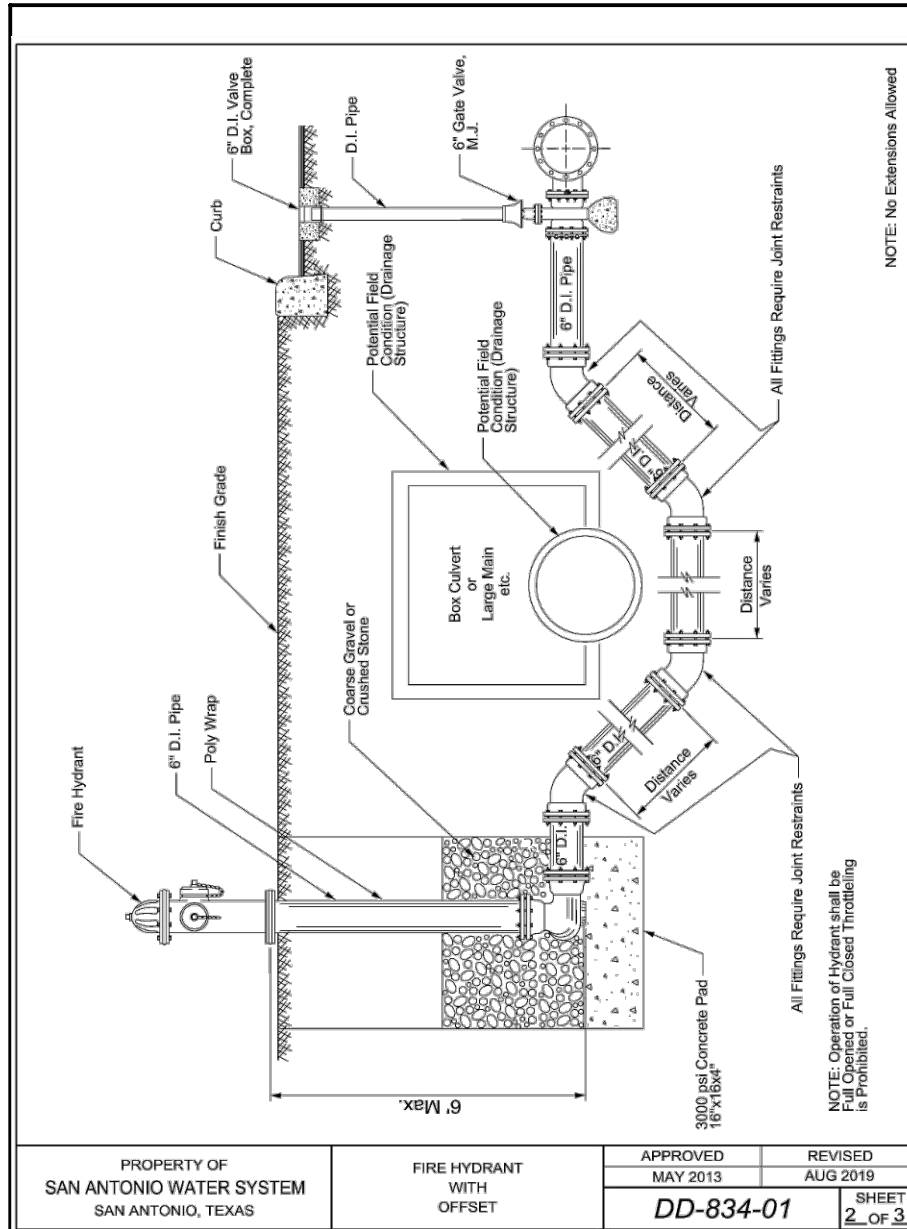
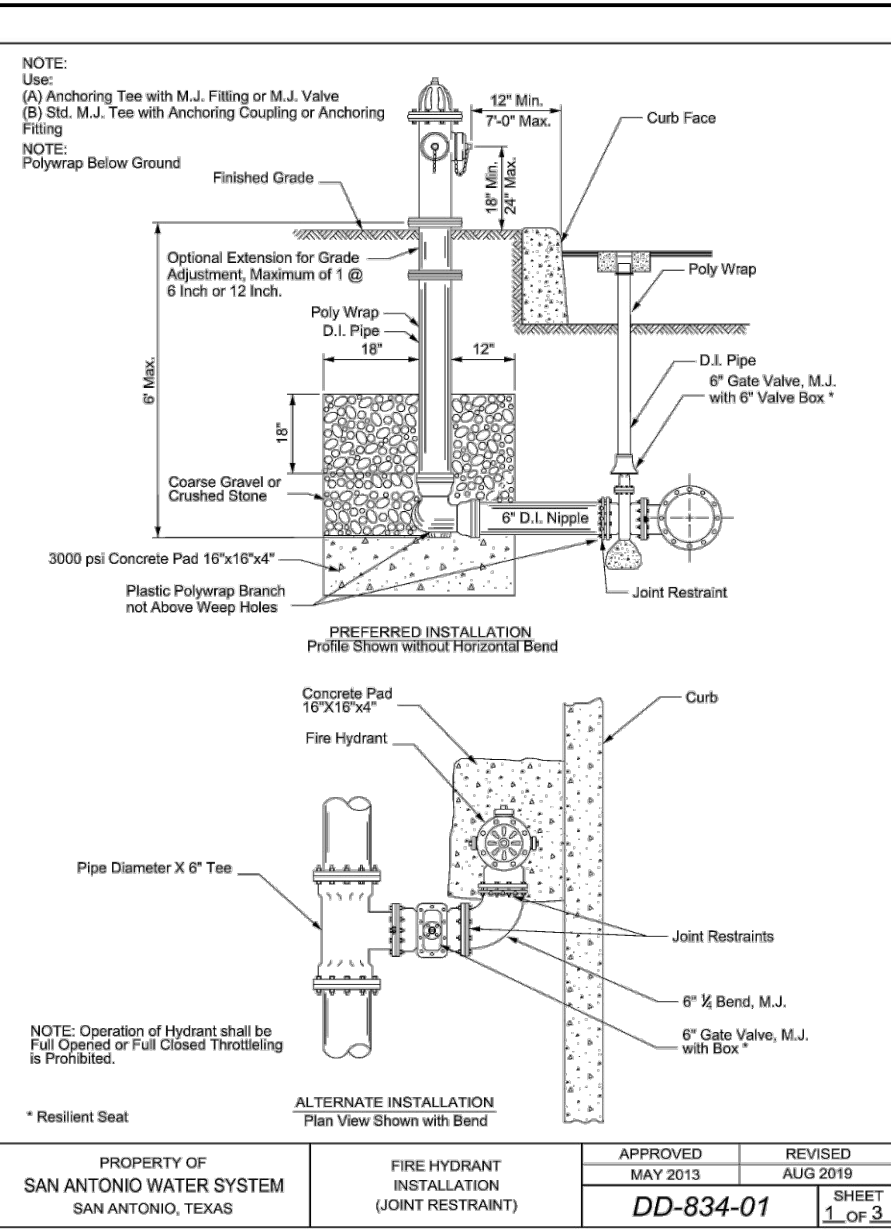
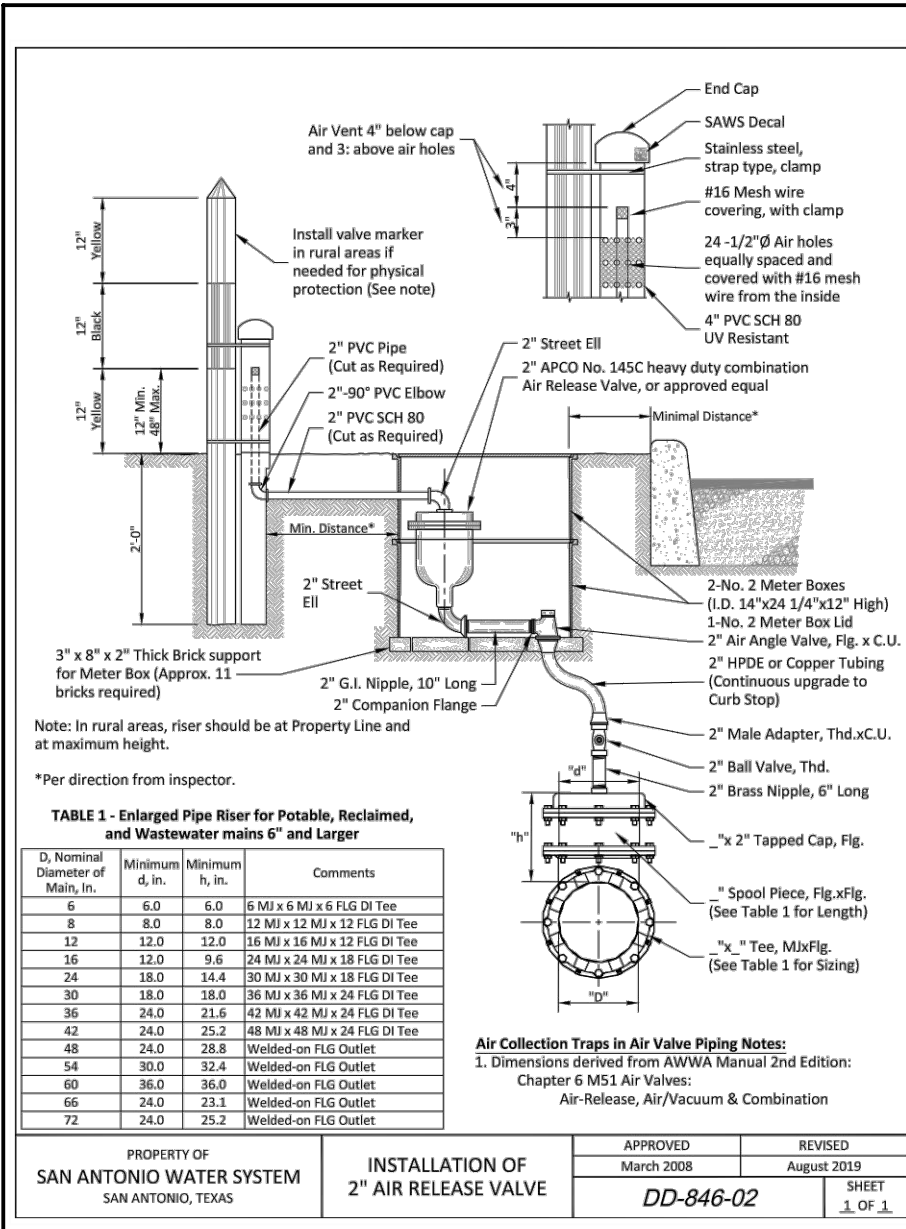
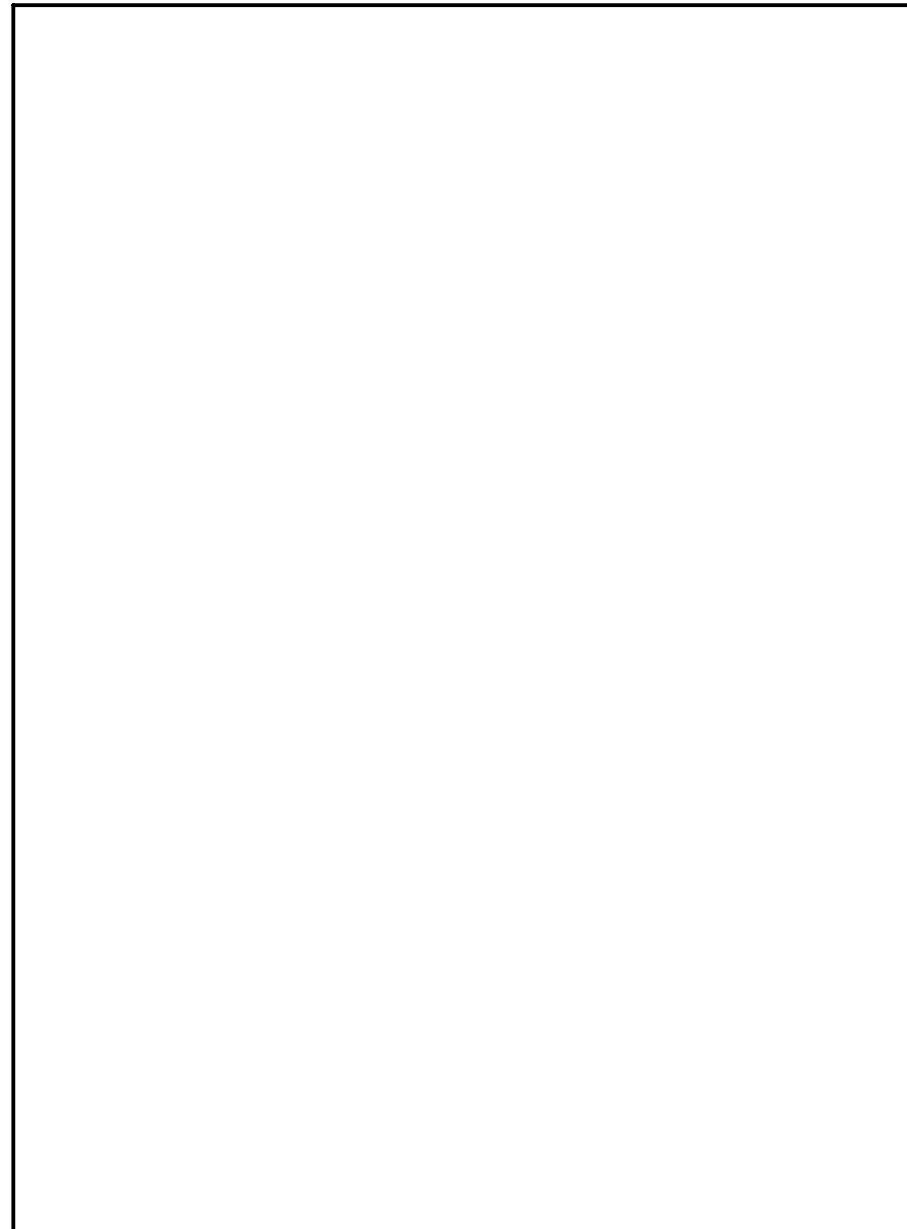
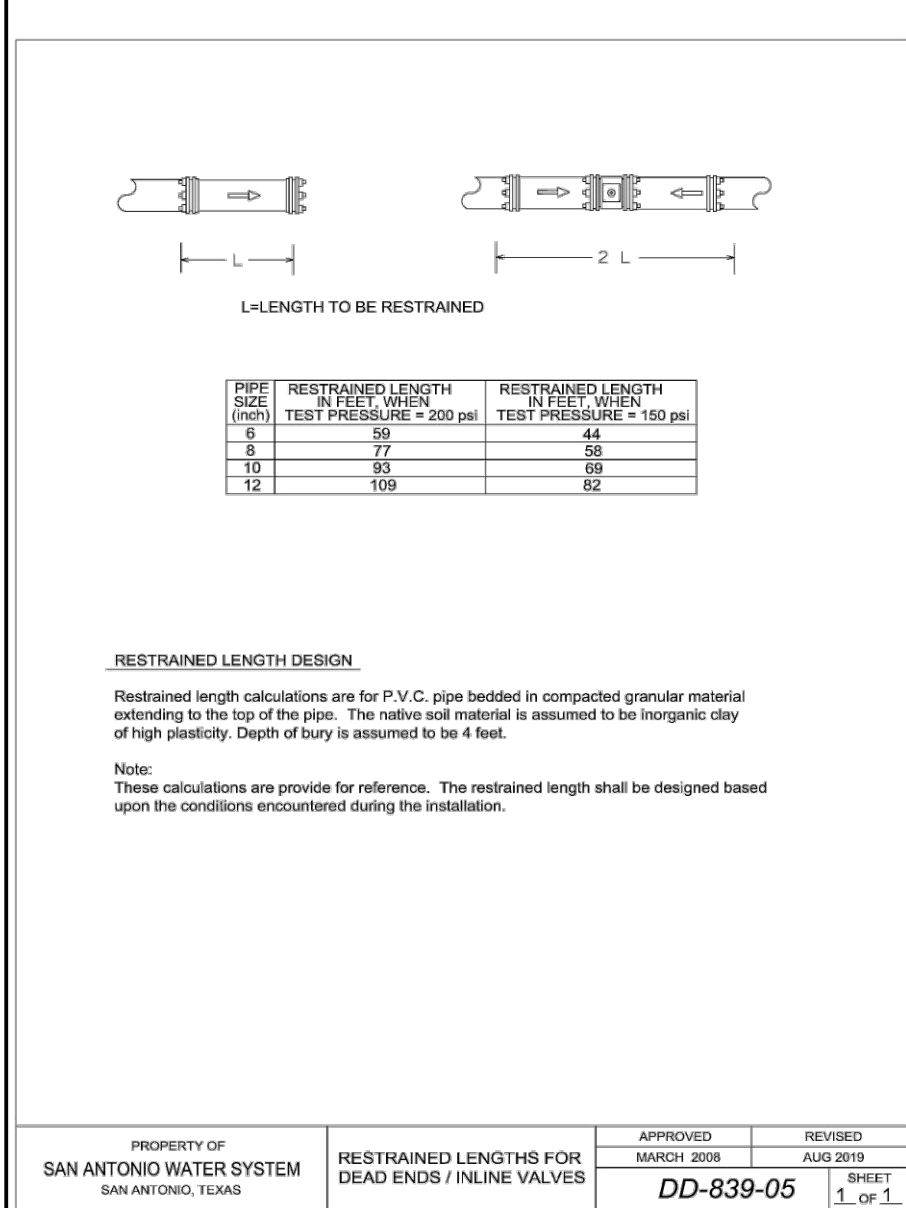
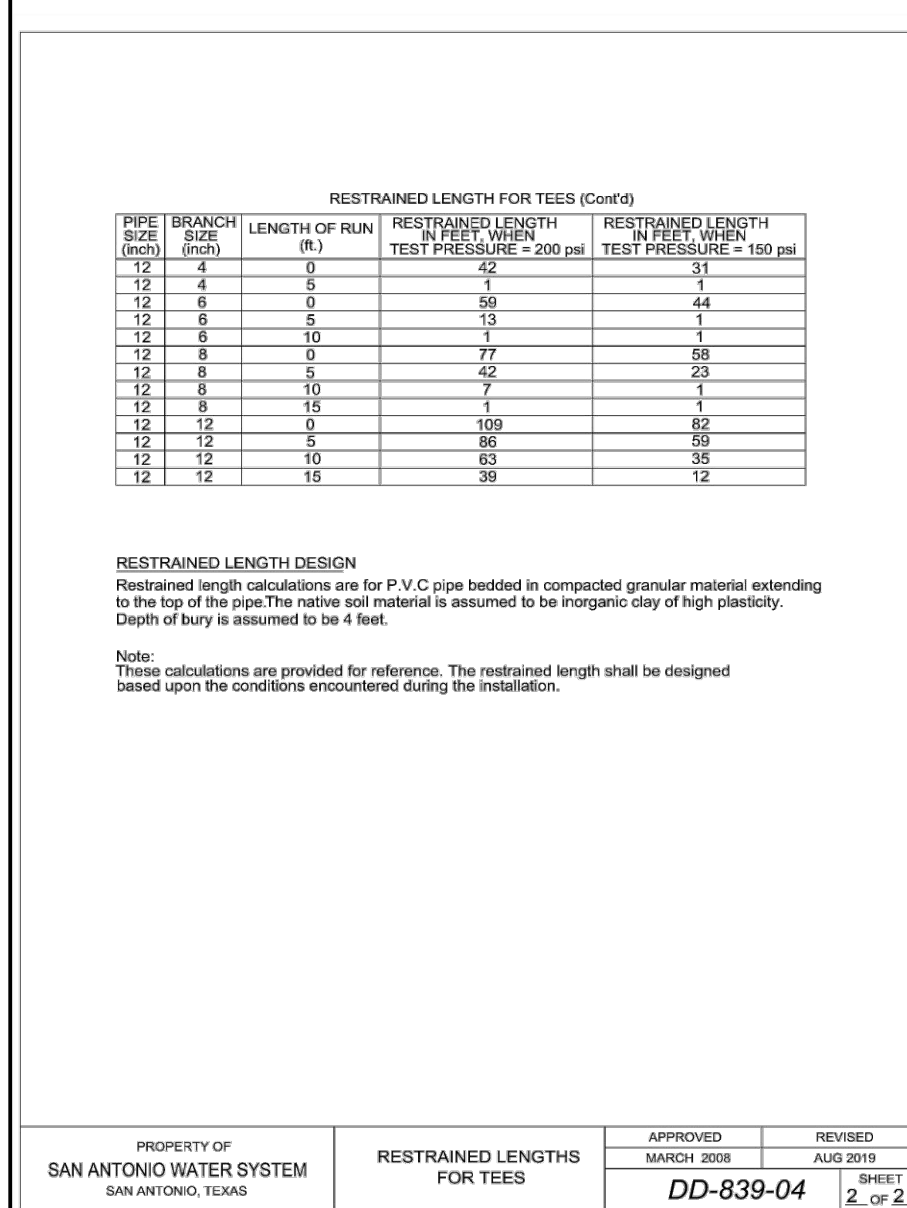
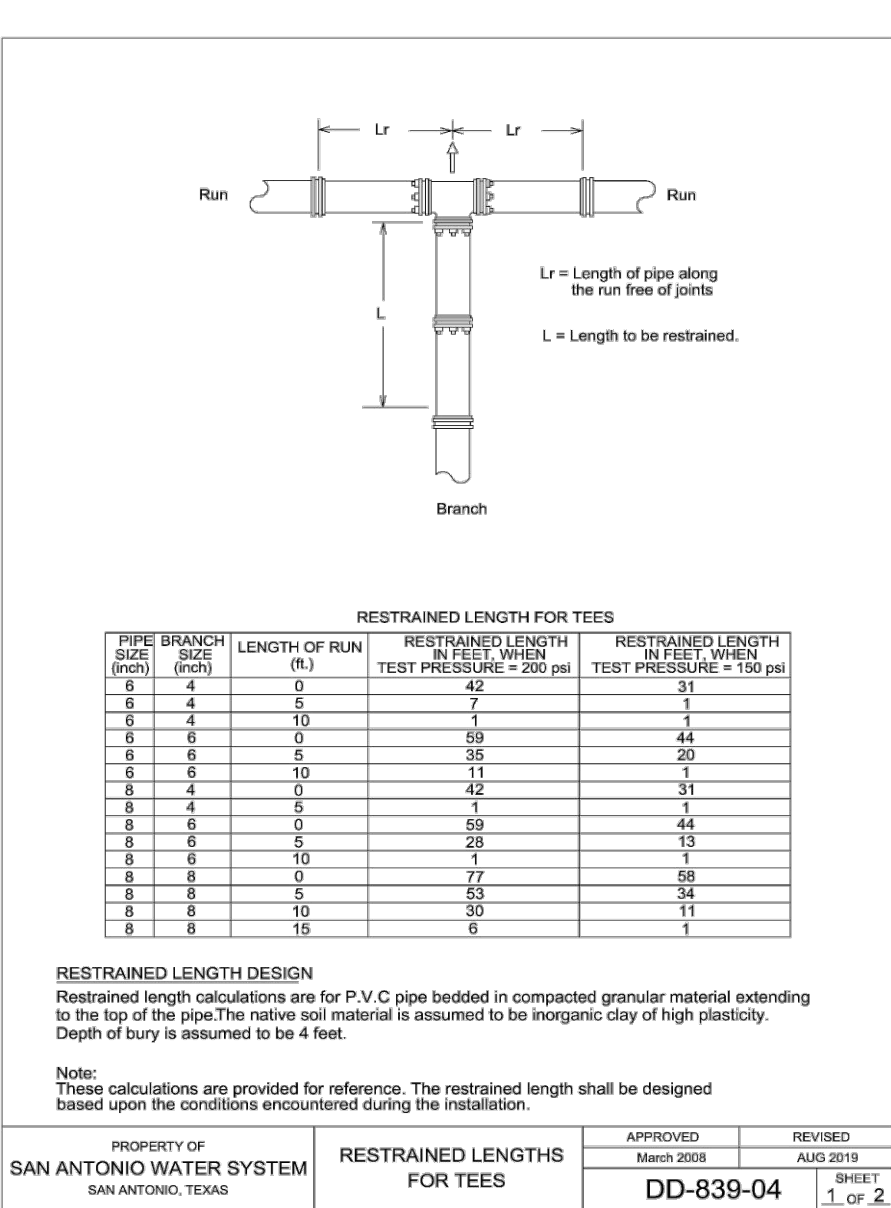
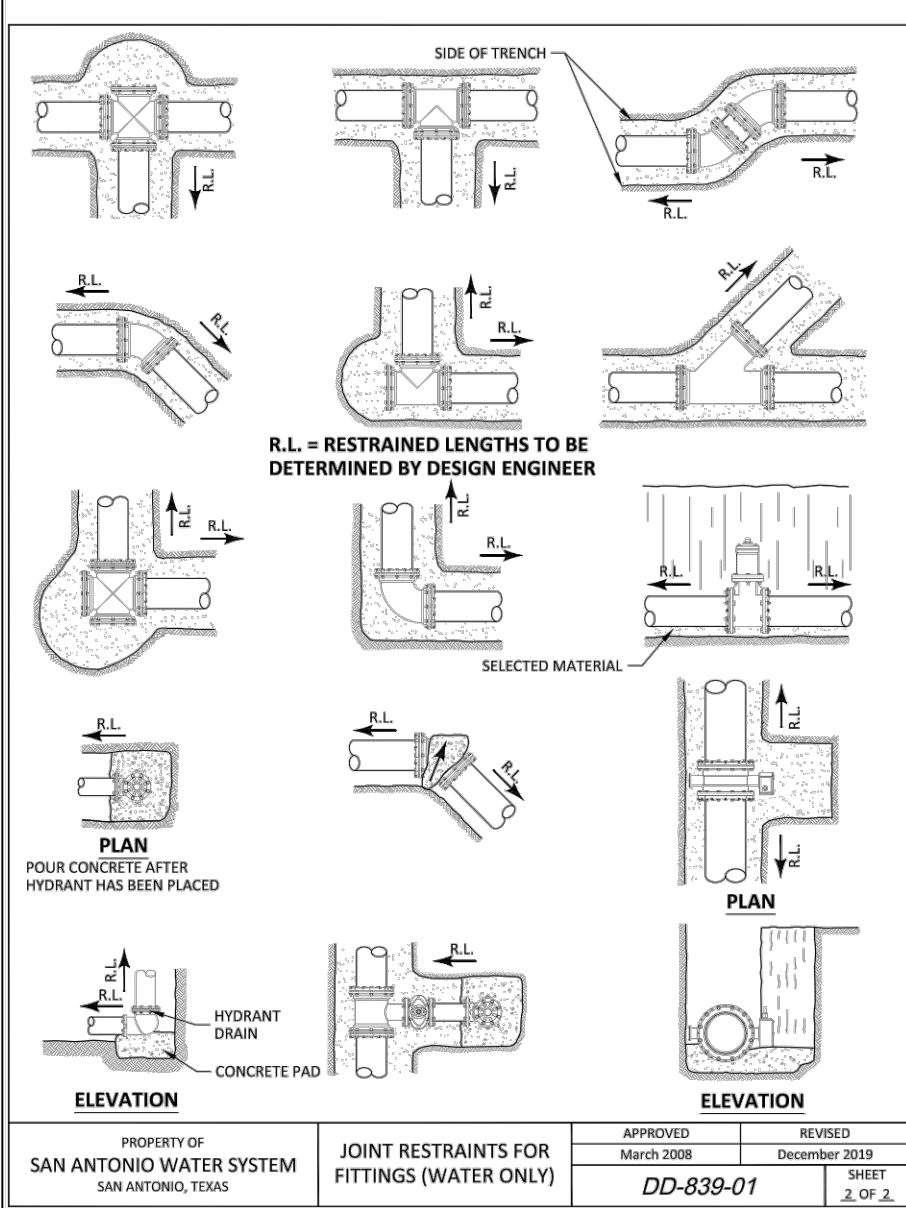
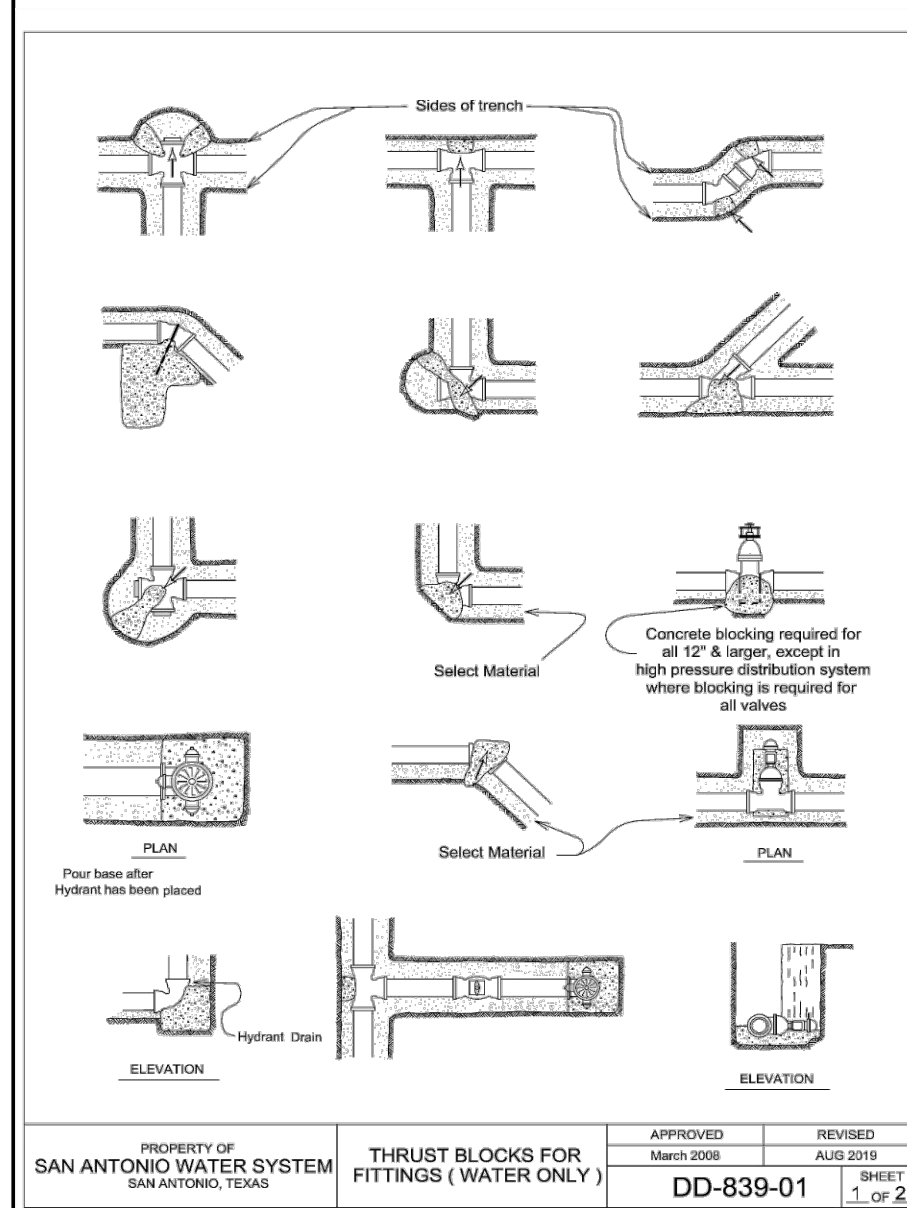
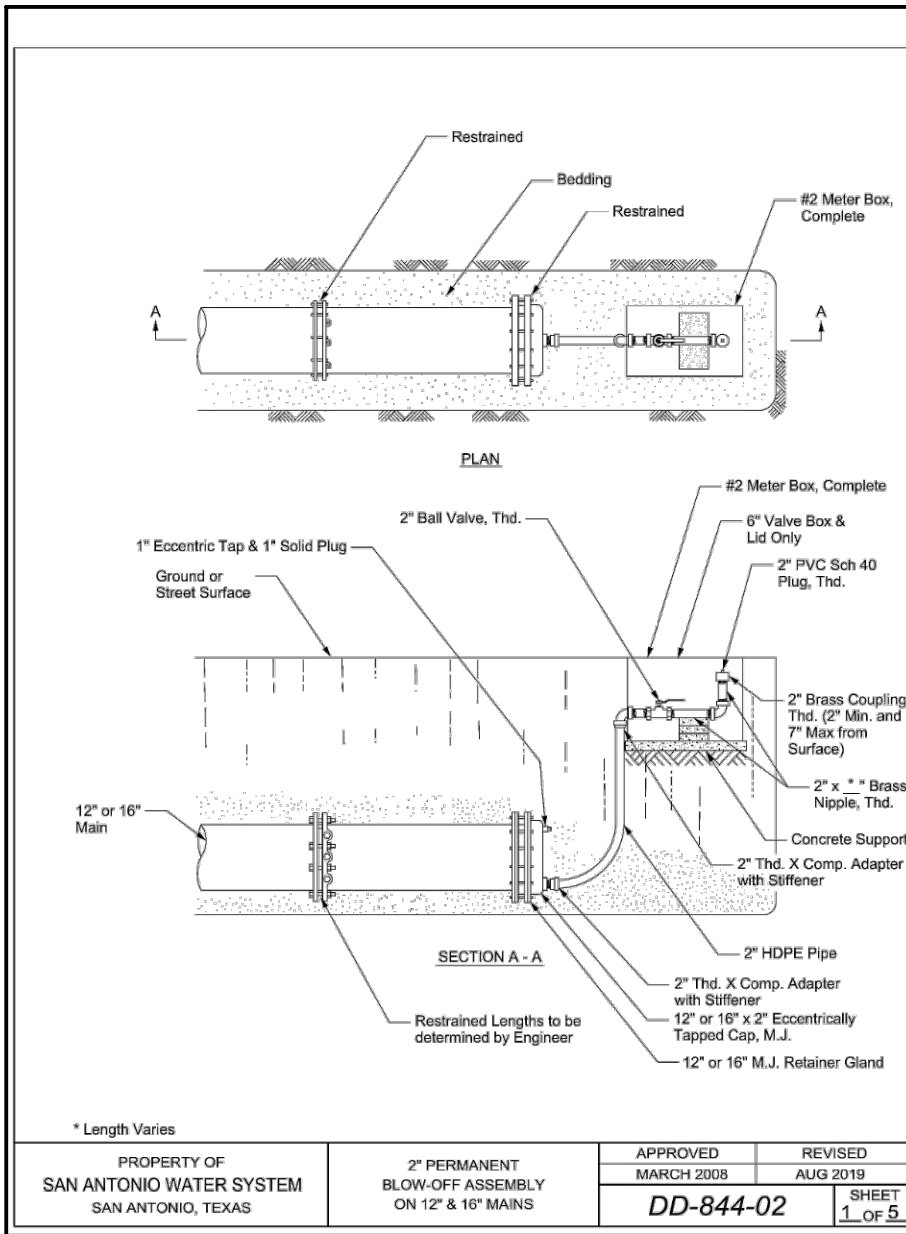
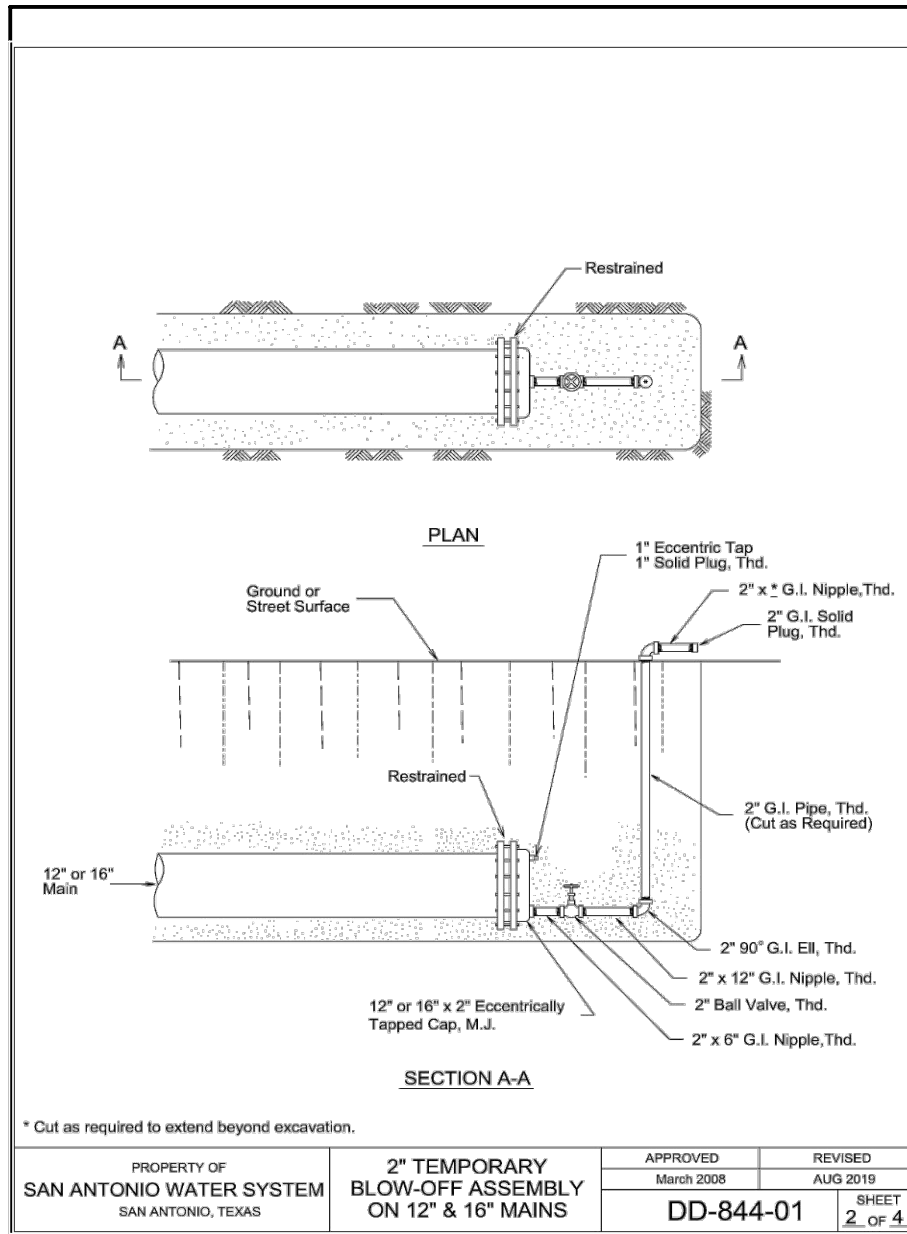
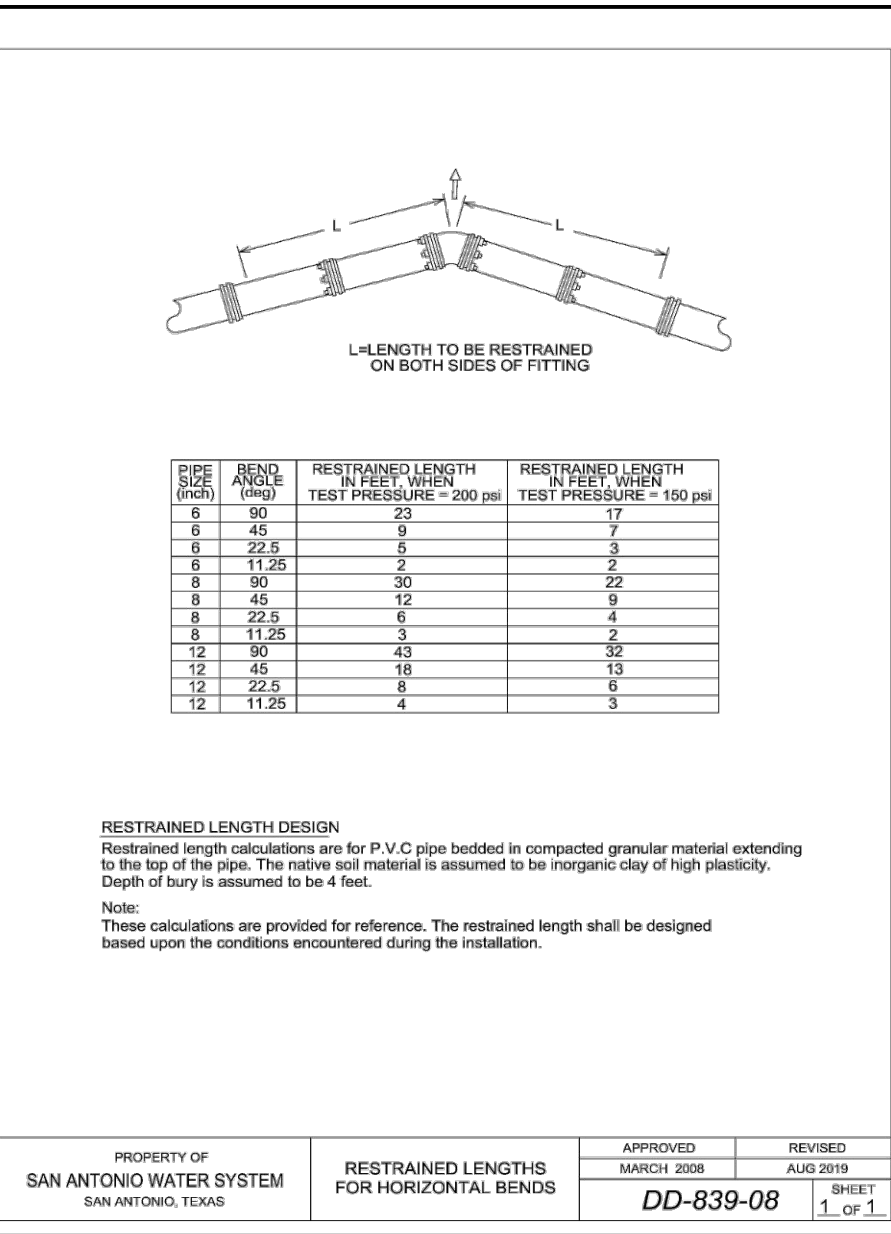
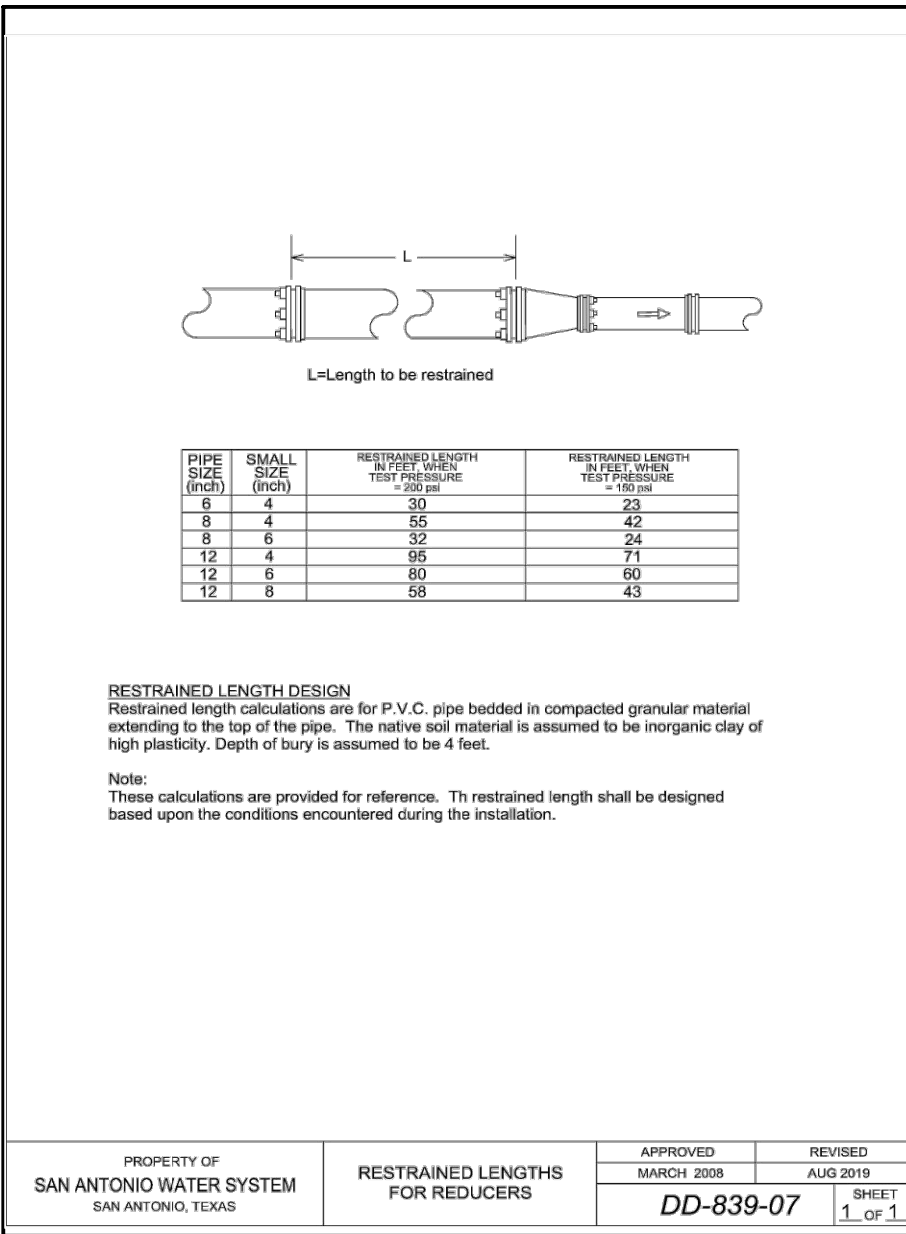
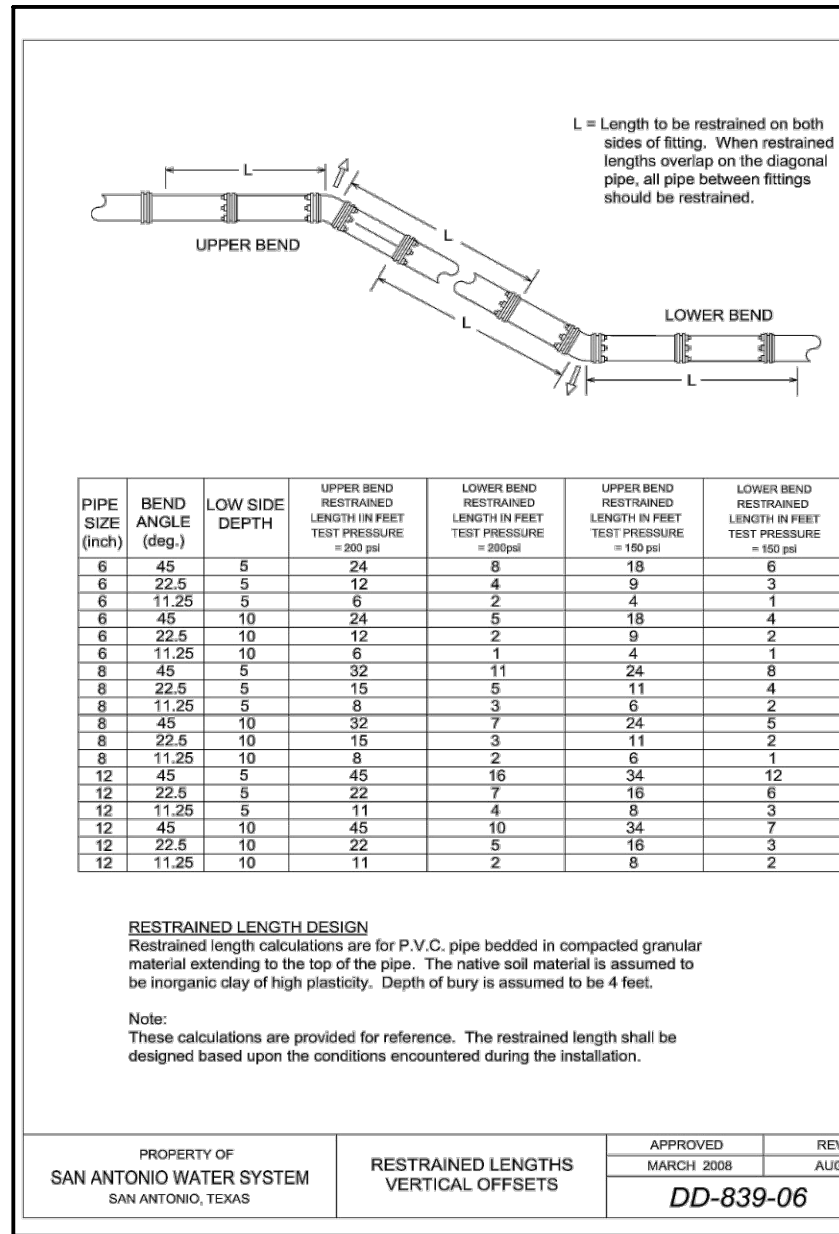
SHEET C1.00

(LAST REVISED JANUARY 2022)

NO DIVISION VALVES. DIVISION VALVES SHOWN ON PLANS OR NOT SHOWN ON PLANS BUT FOUND IN THE FIELD SHALL ONLY BE OPERATED BY SAWS DISTRIBUTION AND COLLECTION STAFF AND ONLY WITH PRIOR WRITTEN APPROVAL OF THE SAWS DIRECTOR. THE CONTRACTOR SHALL ADVISE THE SAWS DIRECTOR OF ANY DIVISION VALVE FOUND IN THE FIELD. THE CONTRACTOR SHALL PROVIDE WRITTEN NOTIFICATION TO THE INSPECTOR A MINIMUM OF TWO WEEKS IN ADVANCE TO START THE COORDINATION PROCESS AND WILL BE INFORMED BY THE INSPECTOR WHEN THE DIVISION VALVE WILL BE OPERATED. DIVISION VALVES SHALL BE OPERATED BY SAWS DISTRIBUTION AND COLLECTION STAFF. DIVISION VALVES CAN ONLY BE OPERATED BY SAWS DISTRIBUTION AND COLLECTION STAFF. MEMBER NOT THE INSPECTOR OR THE CONTRACTOR. OPERATION OF A DIVISION VALVE WITHOUT THE EXPRESS PRIOR WRITTEN APPROVAL OF THE SAWS DIRECTOR SHALL BE CONSIDERED A VIOLATION OF THE CONTRACT. IN THE EVENT OF A BREACH OF ANY WRITTEN SAWS CONTRACT OR PERMIT IN ADDITION TO SUBJECTING THE CONTRACTOR TO LIABILITY FOR ANY AND ALL FINES, FEES, OR OTHER DAMAGES, DIRECT OR CONSEQUENTIAL, THAT MAY ARISE FROM OR BE CAUSED BY THE BREACH, THE CONTRACTOR SHALL BE REQUIRED TO OBTAIN A PERMISSION, PLEASE BE INFORMED THAT THE APPROVAL OF THE OPERATION OR OPENING OR CLOSING OF A DIVISION VALVE CAN TAKE SEVERAL WEEKS FOR APPROVAL. DIVISION VALVES WILL ALSO HAVE A VALVE ID LABELED. DIVISION VALVE AND A LOCKING MECHANISM INSTALLED WITH A KEY. THE CONTRACTOR AND KEY MECHANISM SHALL BE INSTALLED BY SAWS DISTRIBUTION BUT WILL BE INSTALLED BY SAWS DISTRIBUTION AND COLLECTION STAFF.

15. UNLESS OTHERWISE NOTED ALL SERVICES SHALL BE 3/4" WITH 5/8" METER.





WATER (SAWS PRESSURE ZONE 1080)

Developer's Name: HDC HWY 211, LTD
Address: 45 NE LOOP 410, SUITE 225
City: SAN ANTONIO State: TEXAS ZIP: 78216
Phone# (210) 838-6784 FAX# 075564, 075566
SAWS Block Map# 075564, 075566 Total EDU's 2 Total Acreage —
Total Linear Footage of Pipe: 2,840 LF = 16" PIPE Plot No. 24-11800112
Number of Lots — SAWS JOB NO. 24-1083