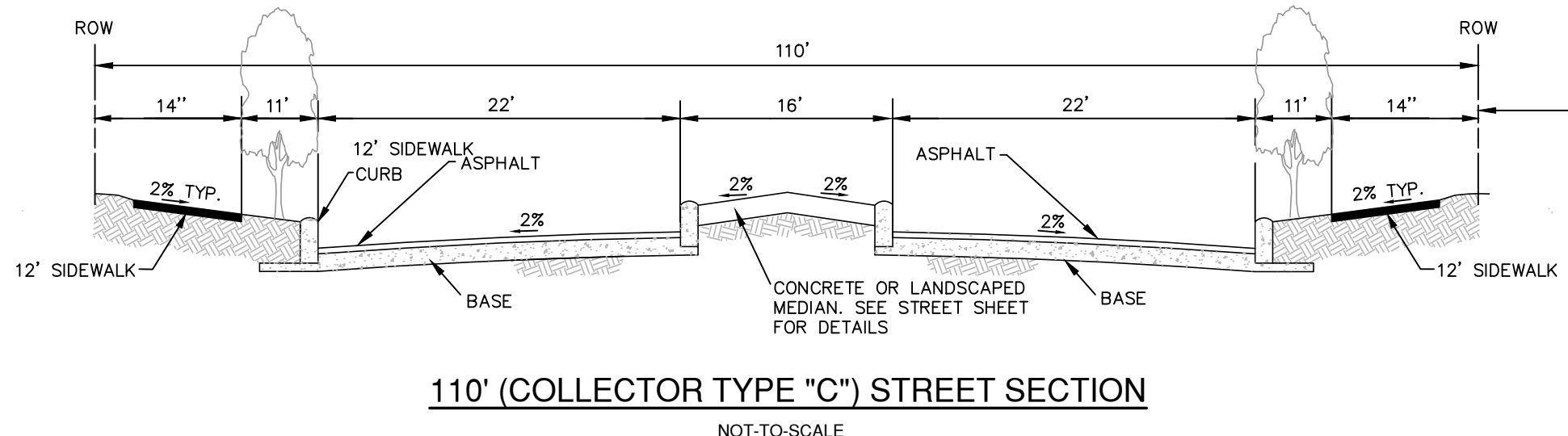
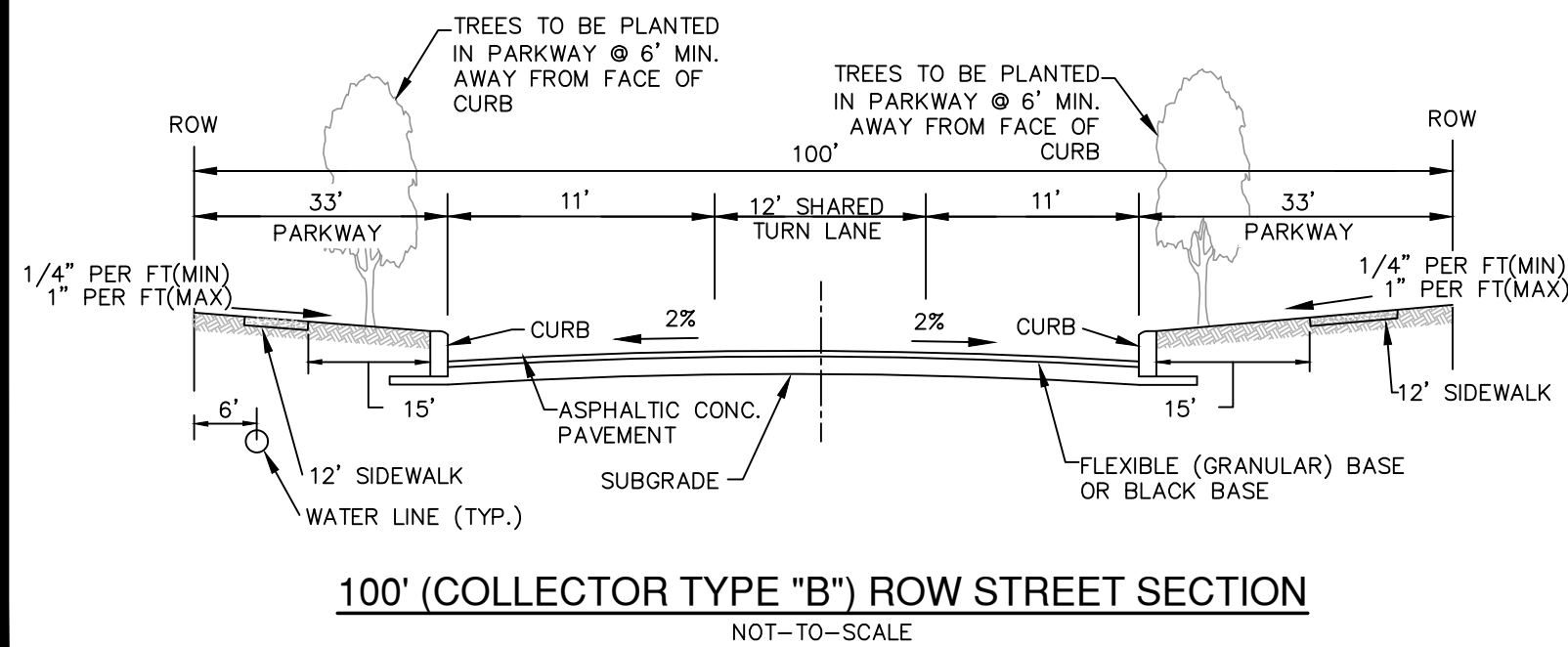
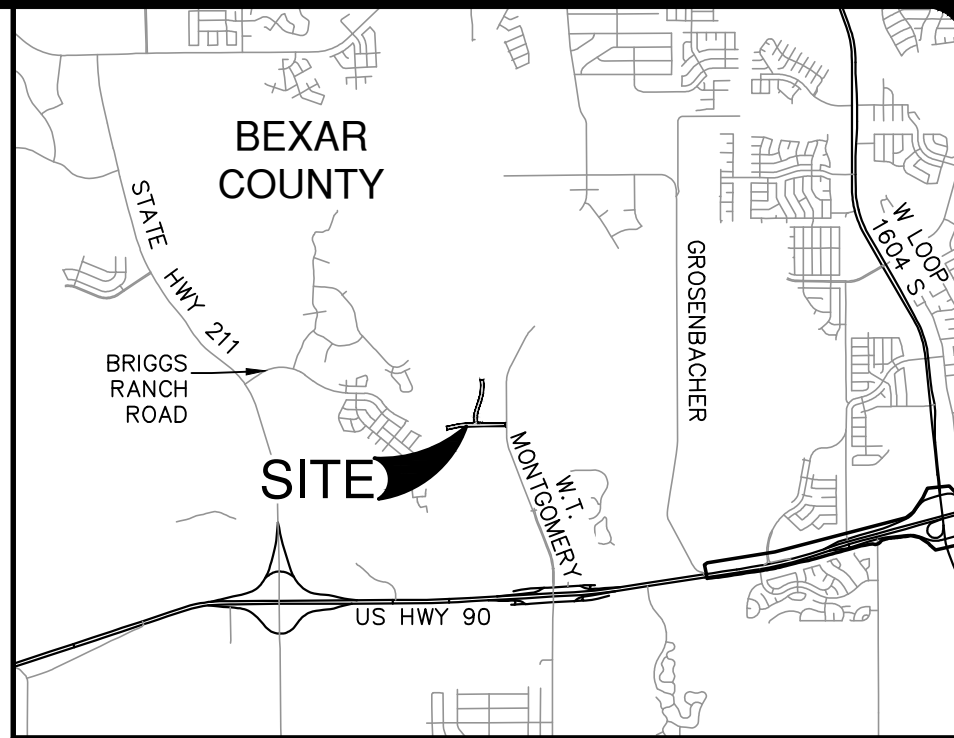
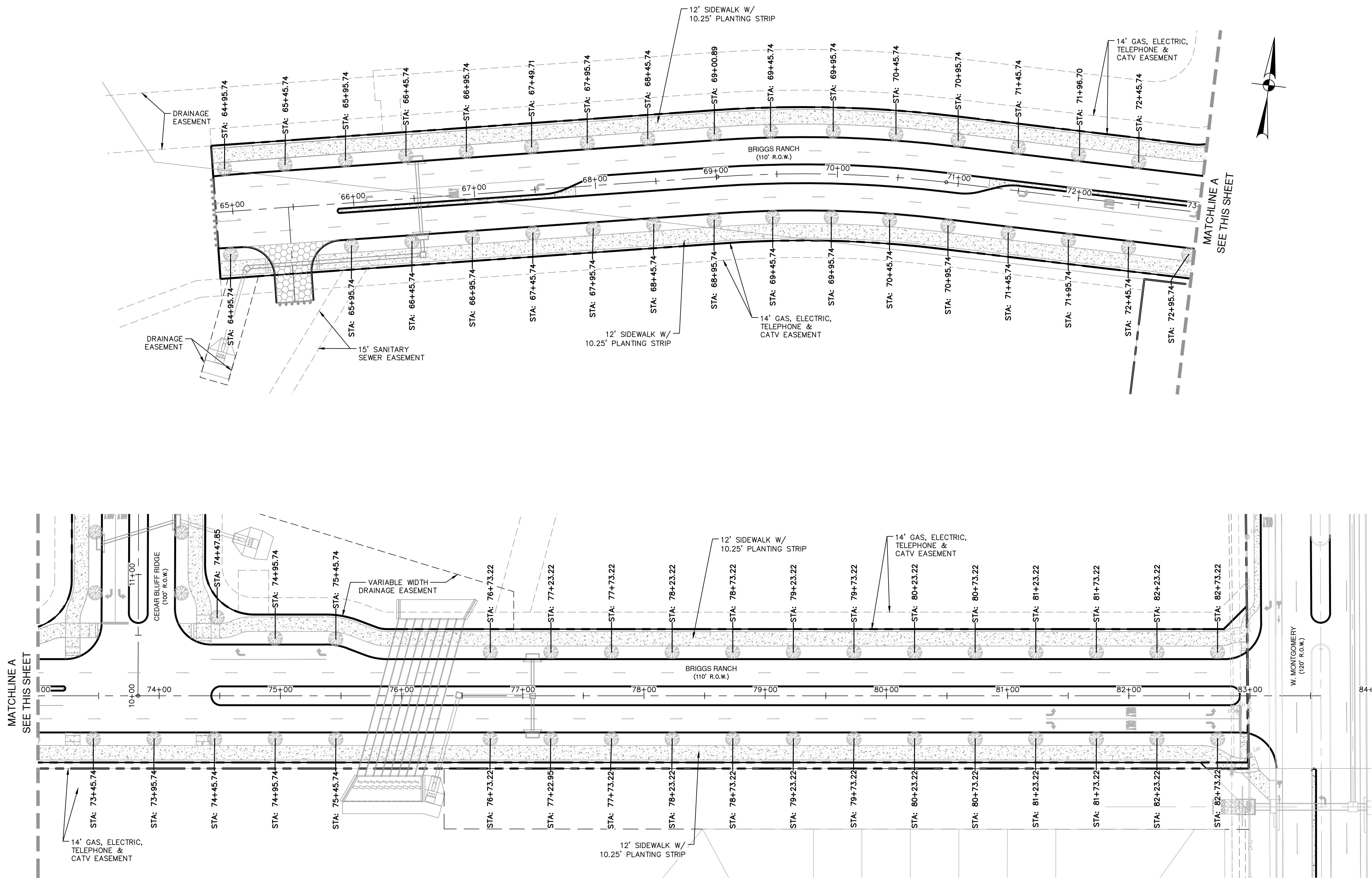


Date: July 22, 2025, 4:39 PM - User ID: jpoell
File: P:\14\12\18\Design Exhibits\250304 Streetscape Exhibit.dwg



NOTE: TREES TO BE
PLANTED 6' MINIMUM
FROM FACE OF CURB



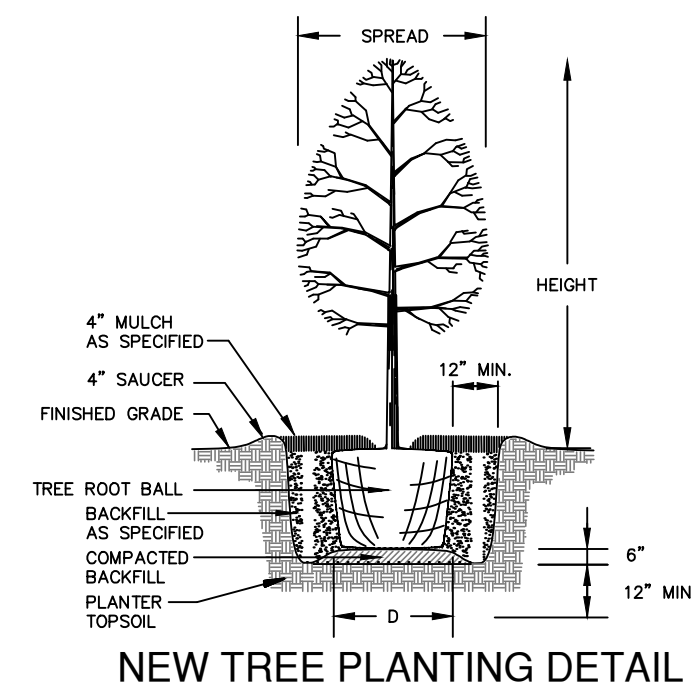
SCALE: 1" = 50'

LEGEND

PROJECT LIMITS

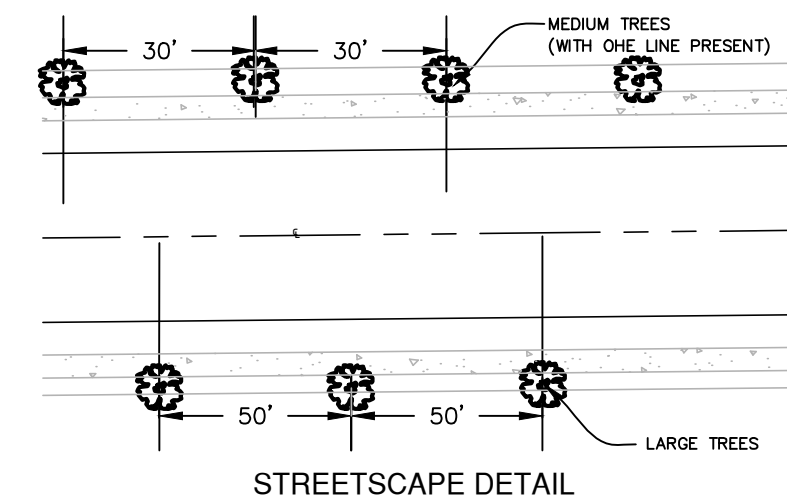
TREE

INTERSECTION SIGHT
DISTANCE



STREETSCAPE TREE PLANTING NOTES:

- LARGE TREES (PER UDC) TO BE PLANTED EVERY 50 FEET ALONG ALAMO PARKWAY PER DETAIL. IF OVERHEAD UTILITY LINES ARE PRESENT, MEDIUM TREES (PER UDC) ARE TO BE PLANTED EVERY 30 FEET PER DETAIL.
- SPECIES OF TREES TO BE DETERMINED BY DEVELOPER'S PROJECT LANDSCAPE ARCHITECT TO CONFORM WITH THE STREETSCAPE PLANTING STANDARDS.
- DEVELOPER TO PROVIDE IRRIGATION ON PLANTED STREET TREES FOR A MINIMUM OF 3 YEARS.
- ALL LANDSCAPING SHALL COMPLY WITH THE CLEAR VISION AREAS DEFINED BY THE LATEST VERSION OF AASHTO'S "A POLICY ON GEOMETRIC DESIGN OF HIGHWAYS AND STREETS."
- TYPES OF TREES AND SPACING ARE BASED ON UNDERGROUND ELECTRIC. IF OVERHEAD ELECTRIC IS REQUIRED BY CPS, PLANS WILL BE REVISED TO REFLECT CHANGES IN SIZE, TYPE, AND SPACING OF TREES, PER THE UDC.



NO.	REVISION	DATE

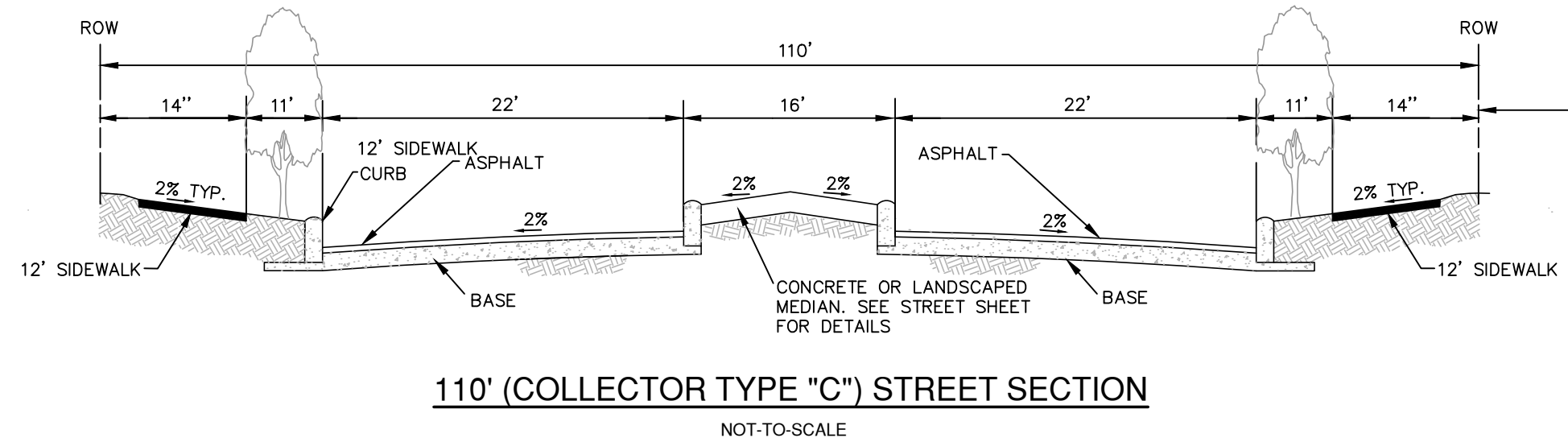
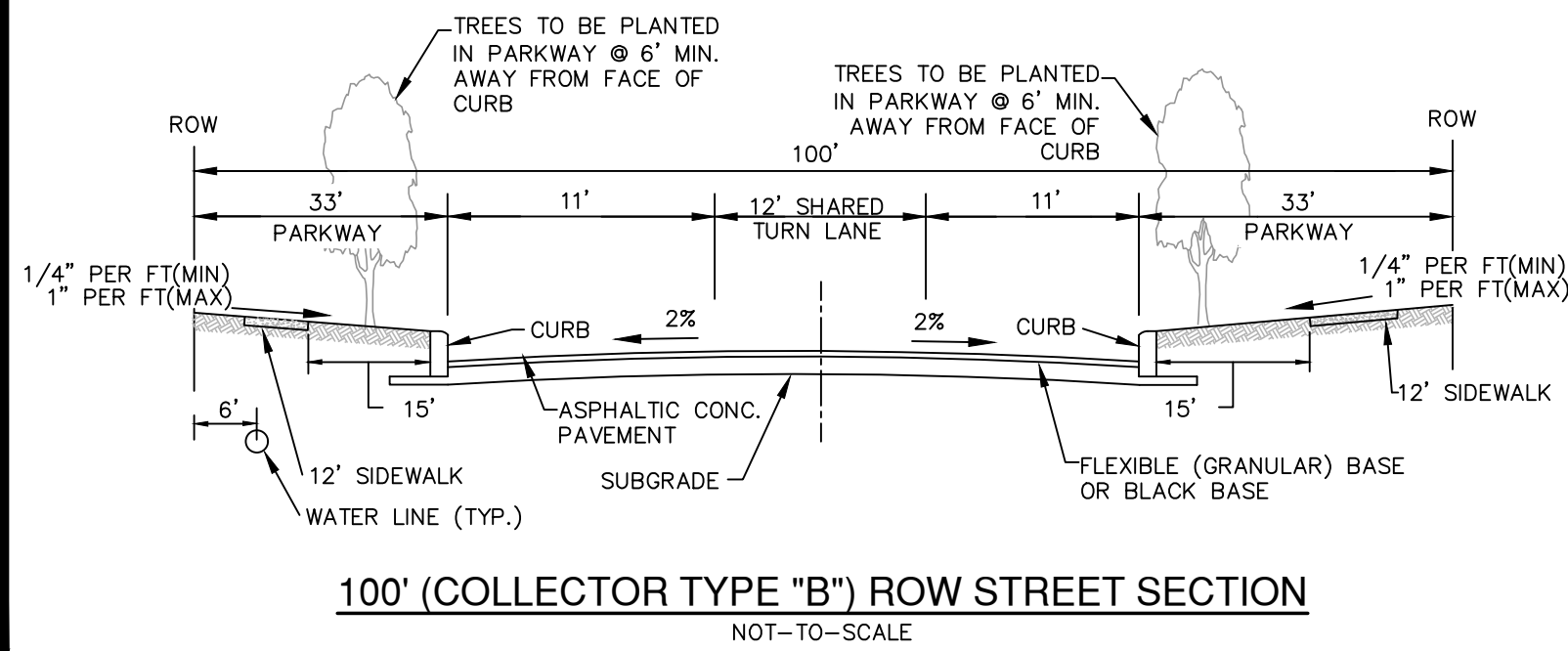
This document is released for INTERIM REVIEW purposes ONLY under the authorization of Matthew Geistweidt, P.E. #118861 on 7/22/25. This document is not to be used for CONSTRUCTION.

PAPE-DAWSON
2000 NW LOOP 410 | SAN ANTONIO, TX 78213 | 210.375.9000
TEXAS SURVEYING FIRM #470 | TEXAS SURVEYING FIRM #1028800

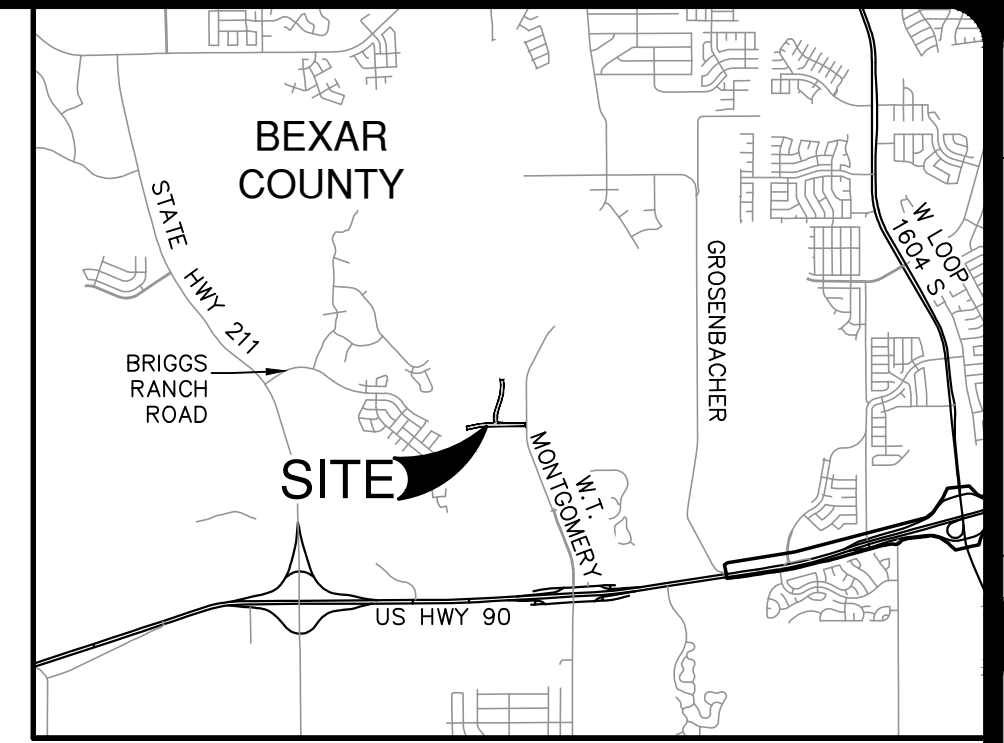
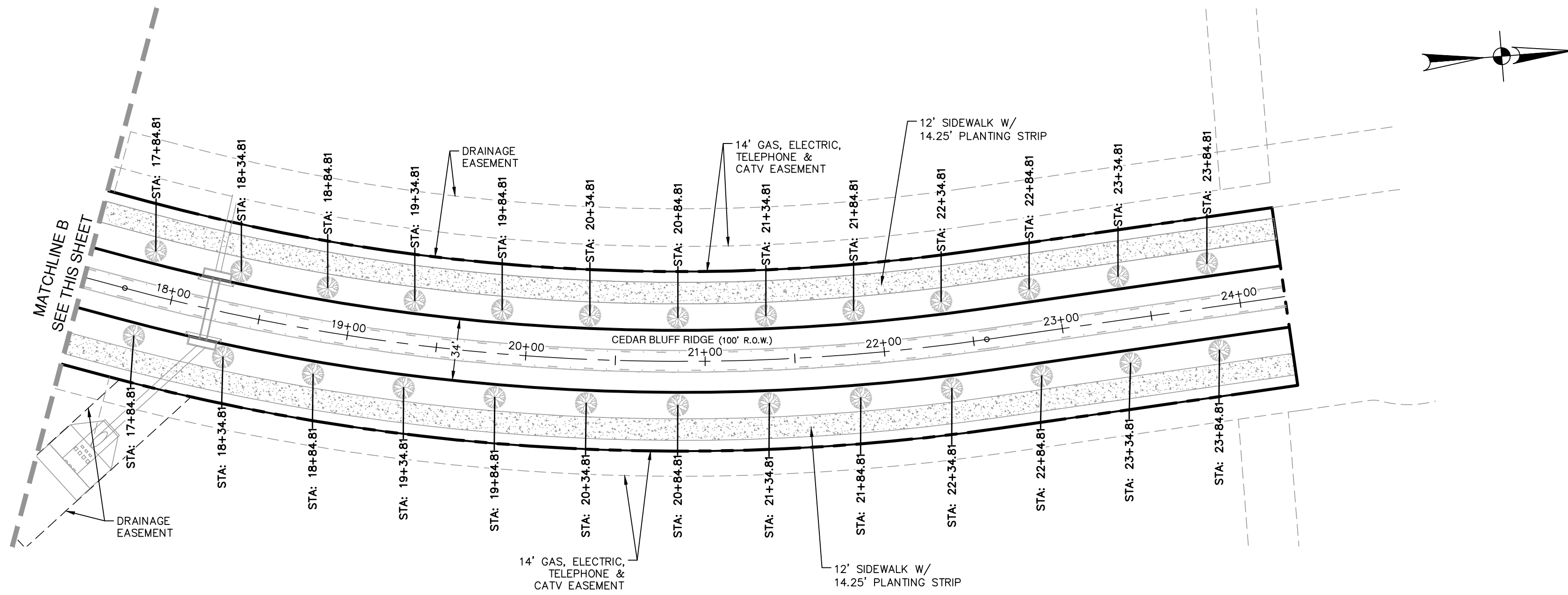
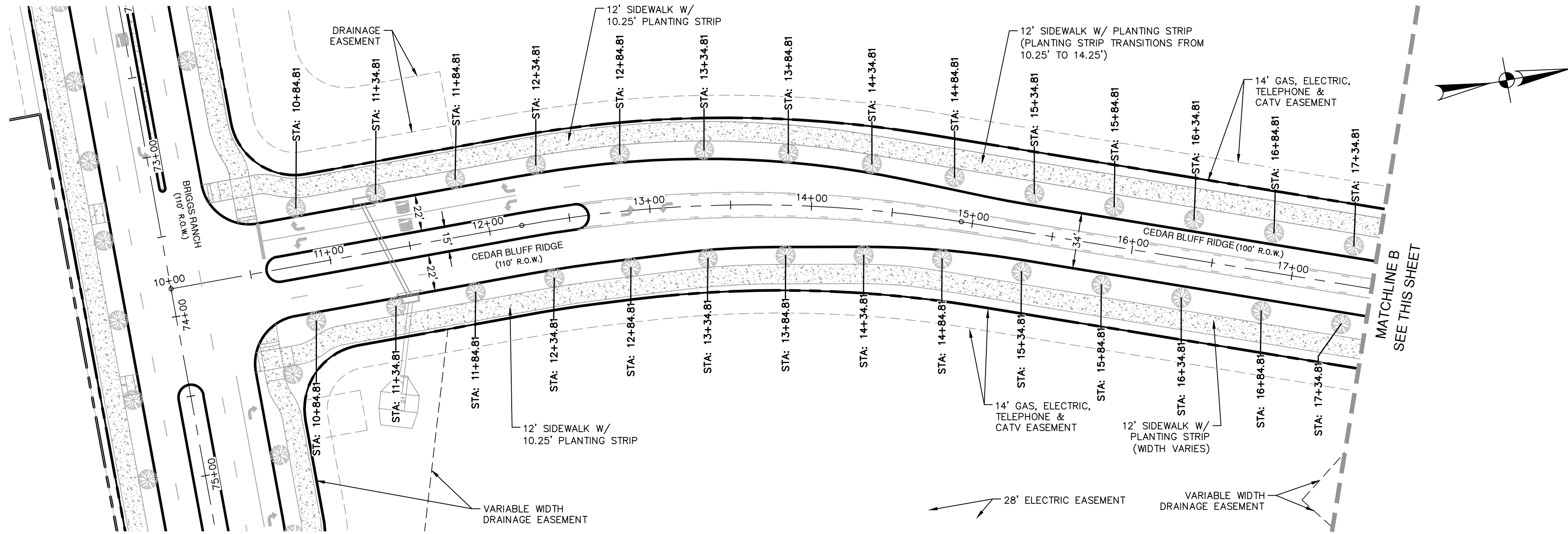
BRE PHASE 2, COLLECTOR
BEXAR COUNTY, TEXAS
STREETSCAPE EXHIBIT - BRIGGS RANCH EAST

PLAT NO.	25-11800088
JOB NO.	11412-18
DATE	JULY 2025
DESIGNER	JP
CHECKED	JH
DRAWN	RG
SHEET	EX1.0

Date: July 22, 2025, 4:38 PM - User ID: jpoell
File: P:\14\12\18\Design Exhibits\250304 Streetscape Exhibit.dwg



NOTE: TREES TO BE
PLANTED 6' MINIMUM
FROM FACE OF CURB



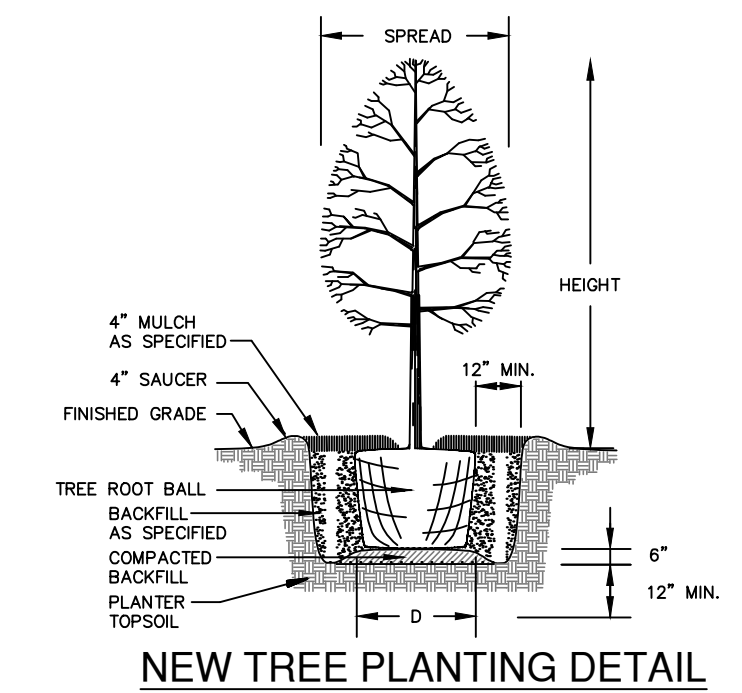
SCALE: 1" = 50'

LEGEND

PROJECT LIMITS

TREE

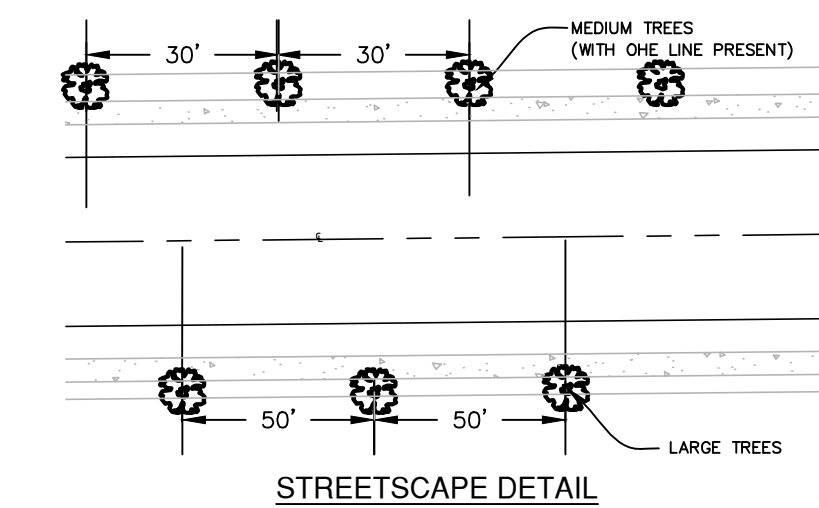
INTERSECTION SIGHT
DISTANCE



STREETSCAPE TREE PLANTING NOTES:

LARGE TREES (PER UDC) TO BE PLANTED EVERY 50 FEET ALONG ALAMO PARKWAY PER DETAIL. IF OVERHEAD UTILITY LINES ARE PRESENT, MEDIUM TREES (PER DETAIL) ARE TO BE PLANTED EVERY 30 FEET PER DETAIL.

- SPECIES OF TREES TO BE DETERMINED BY DEVELOPER'S PROJECT LANDSCAPE ARCHITECT TO CONFORM WITH THE STREETSCAPE PLANTING STANDARDS.
- DEVELOPER TO PROVIDE IRRIGATION ON PLANTED STREET TREES FOR A MINIMUM OF 3 YEARS.
- ALL LANDSCAPING SHALL COMPLY WITH THE CLEAR VISION AREAS DEFINED BY THE LATEST VERSION OF AASHTO'S "A POLICY ON GEOMETRIC DESIGN OF HIGHWAYS AND STREETS."
- TYPES OF TREES AND SPACING ARE BASED ON UNDERGROUND ELECTRIC. IF OVERHEAD ELECTRIC IS REQUIRED BY CPS, PLANS WILL BE REVISED TO REFLECT CHANGES IN SIZE, TYPE, AND SPACING OF TREES, PER THE UDC.



NO.	REVISION	DATE

This document is released for INTERIM REVIEW purposes ONLY under the authorization of Matthew Geistweidt, P.E. #118861 on 7/22/25. This document is not to be used for CONSTRUCTION.

PAPE-DAWSON
2000 NW LOOP 410 | SAN ANTONIO, TX 78213 | 210.375.9000
TEXAS ENGINEERING FIRM #470 | TEXAS SURVEYING FIRM #10028600

BRE PHASE 2, COLLECTOR
BEXAR COUNTY, TEXAS
STREETSCAPE EXHIBIT - CEDAR BLUFF RIDGE

PLAT NO.	25-11800088
JOB NO.	11412-18
DATE	JULY 2025
DESIGNER	JP
CHECKED	JH
DRAWN	RG
SHEET	EX1.1