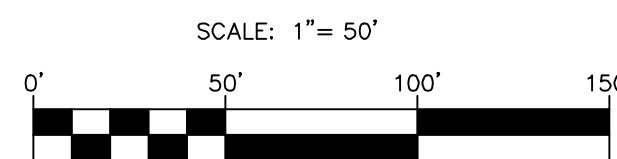


NOT-TO-SCALE



PROJECT LIMITS

EXISTING WATER

EXISTING SEWER

PROPOSED SEWER

PROPOSED WATER

PROPOSED WYE & LATERAL

SINGLE WATER SERVICE

DUAL WATER SERVICE

STREET LIGHTS

CONDUIT	SIZE/TYPE	MIN. DEPTH OF COVER
A	3-6" PVC (SCH 80)(ELEC)	36"
	2-6" PVC (SCH 40)(GAS)	36"
	4-4" PVC (SCH 40)(TELE)	36"
B	2-6" PVC (SCH 80)(ELEC)	36"
	2-6" PVC (SCH 40)(GAS)	36"
	4-4" PVC (SCH 40)(TELE)	36"
C	2-6" PVC (SCH 80)(ELEC)	36"
	4-4" PVC (SCH 40)(TELE)	36"
D	3-6" PVC (SCH 80)(ELEC)	36"
	4-4" PVC (SCH 40)(TELE)	36"
E	3-6" PVC (SCH 80)(ELEC)	36"
	2-8" PVC (SCH 40)(GAS)	36"
	4-4" PVC (SCH 40)(TELE)	36"
F	5-6" PVC (SCH 80)(ELEC)	36"
	2-8" PVC (SCH 40)(GAS)	36"
	4-4" PVC (SCH 40)(TELE)	36"

A BEXAR COUNTY ROW PERMIT MUST BE OBTAINED BEFORE WORKING BEXAR COUNTY ROW. CONTRACTOR SHALL COORDINATE A TRAFFIC CONTROL PLAN FOR ALL WORK WITHIN THE ROW. ADDITIONAL WARNING SIGNS MAY BE RECOMMENDED BY THE ENGINEER ONCE THE ROADWAYS ARE CONSTRUCTED.

1. CONTRACTOR SHALL INSTALL PERMANENT MARKERS IN PROPOSED CURBS WHERE CONDUITS CROSS THE ROADWAY (BOTH SIDES).
2. CONDUITS SHALL BE PVC WITH MINIMUM BURY OF 36 INCHES BELOW PROPOSED FINISHED GRADE. SCHEDULE 80 TO BE USED FOR CPES CONDUIT. ALL OTHER CONDUITS ARE SCHEDULE 40.
3. ALL CONDUITS SHALL BE EXTENDED BEHIND CURBS OR PROPOSED SIDEWALKS A MINIMUM OF 3 FEET AND CAPPED FOR FUTURE USE.
4. ALL CONDUIT SLEEVES TO BE USED FOR ELECTRIC, GAS, OR TELECOMMUNICATION UTILITY CROSSINGS SHALL BE INSTALLED TO MEET OR EXCEED DESIGN REQUIREMENTS FOR THE UTILITY AGENCY WHICH THEY ARE SERVING, INCLUDING BUT NOT LIMITED TO THE DEPT. OF TRANSPORTATION PLACEMENT TO OTHER UTILITIES. THE CONTRACTOR IS SOLELY RESPONSIBLE FOR VERIFYING AND INSTALLING THE CONDUIT SLEEVES TO MEET THESE SPECIFICATIONS INCLUDING COORDINATING WITH THE UTILITY AGENCY FOR ANY REQUIRED INSPECTIONS.

CONTRACTOR AND/OR CONTRACTOR'S INDEPENDENTLY RETAINED EMPLOYER OR STRUCTURAL DESIGN/ GEOTECHNICAL/ SAFETY/EQUIPMENT CONSULTANT IF ANY, SHALL REVIEW THESE PLANS AND ANY AVAILABLE GEOTECHNICAL INFORMATION AND THE ANTICIPATED INSTALLATION SITES WITHIN THE PROJECT WORK CORridor AND COMMENT THEREON TO THE PROJECT ENGINEER FOR TRENCH EXCAVATION SAFETY PROTECTION SYSTEMS PROGRAMS AND PROCEDURES FOR THE PROJECT DESCRIBED IN THE CONTRACT DOCUMENTS. THE CONTRACTOR'S IMPLEMENTATION OF THESE SYSTEMS, PROGRAMS AND/OR PROCEDURES SHALL PROVIDE FOR ADEQUATE TRENCH EXCAVATION SAFETY PROTECTION SYSTEMS SPECIFICALLY WITHIN THE STATIONING RANGE FOR TRENCH EXCAVATIONS. SPECIFICALLY, CONTRACTOR AND/OR CONTRACTOR'S INDEPENDENTLY RETAINED EMPLOYER OR SAFETY/EQUIPMENT CONSULTANT SHALL IMPLEMENT A TRENCH SAFETY PROGRAM ADEQUATE WITH THE CONTRACT REQUIREMENTS AND PRESENTED AT THE ACTIVITIES OF INDIVIDUALS WORKING IN AND AROUND TRENCH EXCAVATION.

CONTRACTOR SHALL BE REQUIRED TO LOCATE ALL PUBLIC OR PRIVATE UTILITIES INCLUDING BUT NOT LIMITING TO: WATER, SEWER, TELEPHONE, AIR FIBER OPTIC LINES, SITE LIGHTING ELECTRIC, SECONDARY ELECTRIC, PRIMARY ELECTRICAL DUCTBANKS, LANDSCAPE IRRIGATION FACILITIES, AND GAS LINES. ANY UTILITY CONFLICTS THAT ARISE SHOULD BE COMMUNICATED TO THE ENGINEER IMMEDIATELY AND PRIOR TO CONSTRUCTION. THE CONTRACTOR SHALL CONTACT 1-800-DIG-TEST A MINIMUM OF 48 HOURS PRIOR TO THE START OF CONSTRUCTION. THE DAMAGE EXISTING UTILITIES SHALL BE THE SOLE RESPONSIBILITY OF THE CONTRACTOR AND THE REPAIR SHALL BE AT CONTRACTOR'S SOLE EXPENSE WHETHER THE UTILITY IS SHOWN THESE PLANS OR NOT.

[illegible]

# PAPE-DAWSON

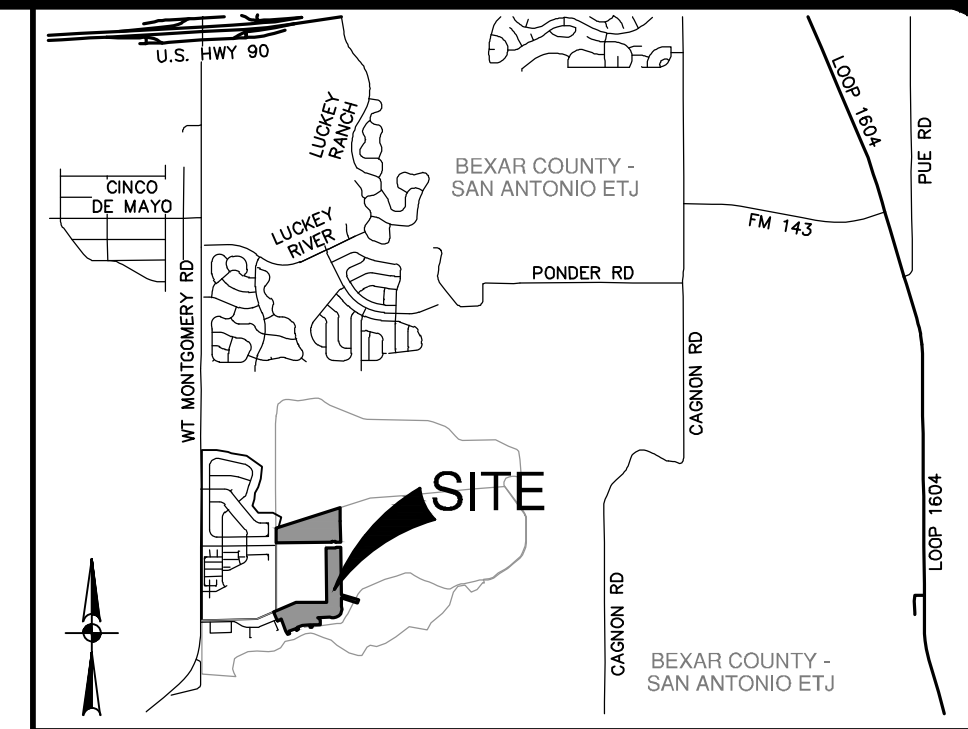
2000 NW LOOP 410 | SAN ANTONIO, TX 78213 | 210.375.9000  
TEXAS ENGINEERING FIRM #470 | TEXAS SURVEYING FIRM #10028800

**BLOSSOM RANCH UNIT 1B**  
**SAN ANTONIO, TEXAS**

## CONDUIT CROSSING PLAN

PLAT NO. 24-1180044  
JOB NO. 13055-21  
DATE JULY 2025  
DESIGNER AA  
CHECKED AD DRAWN AA  
SHEET 1 OF 3





A north arrow pointing upwards and a graphic scale bar. The scale bar is marked from 0' to 150' in increments of 50'. Above the scale bar, the text reads: SCALE: 1" = 50'.

**PROJECT LIMITS**

- EXISTING WATER
- EXISTING SEWER
- PROPOSED SEWER
- PROPOSED WATER
- PROPOSED WYE & LATERAL
- SINGLE WATER SERVICE
- DUAL WATER SERVICE
- STREET LIGHTS

CONDUIT	SIZE/TYPE	MIN. DEPTH OF COVER
A	3-6" PVC (SCH 80) (ELEC)	36"
	2-6" PVC (SCH 40) (GAS)	36"
	4-4" PVC (SCH 40) (TELE)	36"
B	2-6" PVC (SCH 80) (ELEC)	36"
	2-6" PVC (SCH 40) (GAS)	36"
	4-4" PVC (SCH 40) (TELE)	36"
C	2-6" PVC (SCH 80) (ELEC)	36"
	4-4" PVC (SCH 40) (TELE)	36"
D	3-6" PVC (SCH 80) (ELEC)	36"
	4-4" PVC (SCH 40) (TELE)	36"
E	3-6" PVC (SCH 80) (ELEC)	36"
	2-8" PVC (SCH 40) (GAS)	36"
	4-4" PVC (SCH 40) (TELE)	36"
F	5-6" PVC (SCH 80) (ELEC)	36"
	2-8" PVC (SCH 40) (GAS)	36"
	4-4" PVC (SCH 40) (TELE)	36"

A BEXAR COUNTY ROW PERMIT MUST BE OBTAINED BEFORE WORKING IN BEXAR COUNTY ROW. CONTRACTOR SHALL COORDINATE A TRAFFIC CONTROL PLAN FOR ALL WORK WITHIN THE ROW. ADDITIONAL WARNING SIGNS MAY BE RECOMMENDED BY THE ENGINEER ONCE THE ROADWAYS ARE CONSTRUCTED.

1. CONTRACTOR SHALL INSTALL PERMANENT MARKERS IN PROPOSED CURB WHERE CONDUITS CROSS THE ROADWAY (BOTH SIDES).
2. CONDUITS SHALL BE PVC WITH MINIMUM BURY OF 36 INCHES BELOW PROPOSED FINISHED GRADE. SCHEDULE 40 TO BE USED FOR CPVC CONDUITS, ALL OTHER CONDUITS ARE SCHEDULE 40.
3. ALL CONDUITS SHALL BE EXTENDED BEHIND CURBS OR PROPOSED SIDEWALKS A MINIMUM OF 3 FEET AND CAPPED FOR FUTURE USE.
4. ALL CONDUIT SLEEVES TO BE USED FOR ELECTRIC, GAS, OR TELECOMMUNICATION UTILITY CROSSINGS SHALL BE INSTALLED TO MEET OR EXCEED DESIGN REQUIREMENTS FOR THE UTILITY AGENCY WHICH THE SERVICE, INCLUDING BUT NOT LIMITED TO THE DEPTH, TRENCH, PLACEMENT, ETC. TO OTHER UTILITIES. THE CONTRACTOR IS SOLELY RESPONSIBLE FOR VERIFYING AND INSTALLING THE CONDUIT SLEEVES TO MEET THESE SPECIFICATIONS INCLUDING COORDINATING WITH THE UTILITY AGENCY FOR ANY REQUIRED INSPECTIONS

CONTRACTOR AND/OR CONTRACTOR'S INDEPENDENTLY RETAINED EMPLOYEE OR STRUCTURAL DESIGN/ GEOTECHNICAL/ SAFETY/EQUIPMENT CONSULTANT, IF ANY, SHALL REVIEW THESE PLANS AND ANY AVAILABLE GEOTECHNICAL INFORMATION AND THE ANTICIPATED INSTALLATION SITES WITHIN THE PROJECT AREA. THE CONSULTANT'S IMPLEMENTATION OF CONTRACTOR'S EXCAVATION SAFETY PROTECTION SYSTEMS, PROGRAMS AND/OR PROCEDURES FOR THE PROJECT DESCRIBED IN THE CONTRACT DOCUMENTS, THE CONTRACTOR'S IMPLEMENTATION OF THESE SYSTEMS, PROGRAMS AND/OR PROCEDURES SHALL PROVIDE FOR ADEQUATE TRENCH EXCAVATION SAFETY PROTECTION. THE CONTRACTOR SHALL BE RESPONSIBLE FOR TRENCH EXCAVATIONS, SPECIFICALLY, CONTRACTOR AND/OR CONTRACTOR'S INDEPENDENTLY RETAINED EMPLOYEE OR SAFETY CONSULTANT SHALL IMPLEMENT A TRENCH SAFETY PROGRAM IN ACCORDANCE WITH OSHA STANDARDS AND ALL PREVENTIVE AND PROTECTIVE ACTIVITIES OF INDIVIDUALS WORKING IN AND AROUND TRENCH EXCAVATION.

CONTRACTOR SHALL BE REQUIRED TO LOCATE ALL PUBLIC OR PRIVATE UTILITIES INCLUDING BUT NOT LIMITING TO: WATER, SEWER, TELEPHONE AND FIBER OPTIC LINES, SITE LIGHTING ELECTRIC, SECONDARY ELECTRIC, PRIMARY ELECTRICAL DUCTBANKS, LANDSCAPE IRRIGATION FACILITIES, AND GAS LINES. ANY UTILITY CONFLICTS THAT ARISE SHOULD BE COMMUNICATED TO THE ENGINEER IMMEDIATELY AND PRIOR TO CONSTRUCTION. THE CONTRACTOR SHALL CONTACT 1-800-DIG-TESS A MINIMUM OF 48 HOURS PRIOR TO THE START OF CONSTRUCTION. ANY DAMAGE TO EXISTING UTILITIES SHALL BE THE SOLE RESPONSIBILITY OF THE CONTRACTOR AND THE REPAIR SHALL BE AT CONTRACTOR'S SOLE EXPENSE WHETHER THE UTILITY IS SHOWN ON THESE PLANS OR NOT.

[illegible]

**PAPE-DAWSON**  
2000 NW LOOP 410 | SAN ANTONIO, TX 78213 | 210.375.9000  
TEXAS ENGINEERING FIRM #470 | TEXAS SURVEYING FIRM #10028800

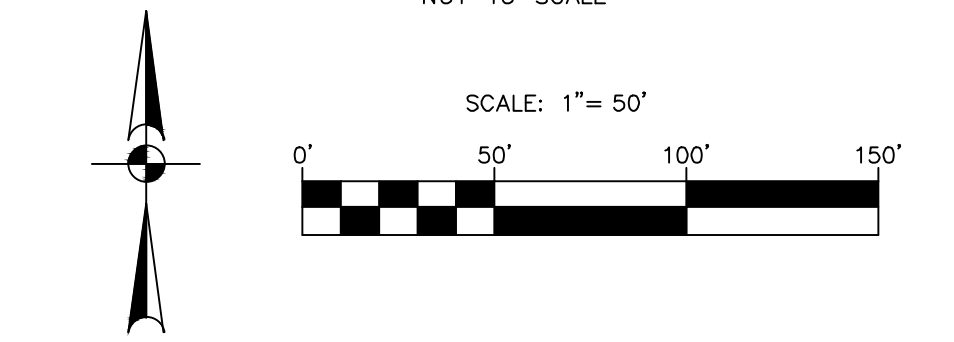
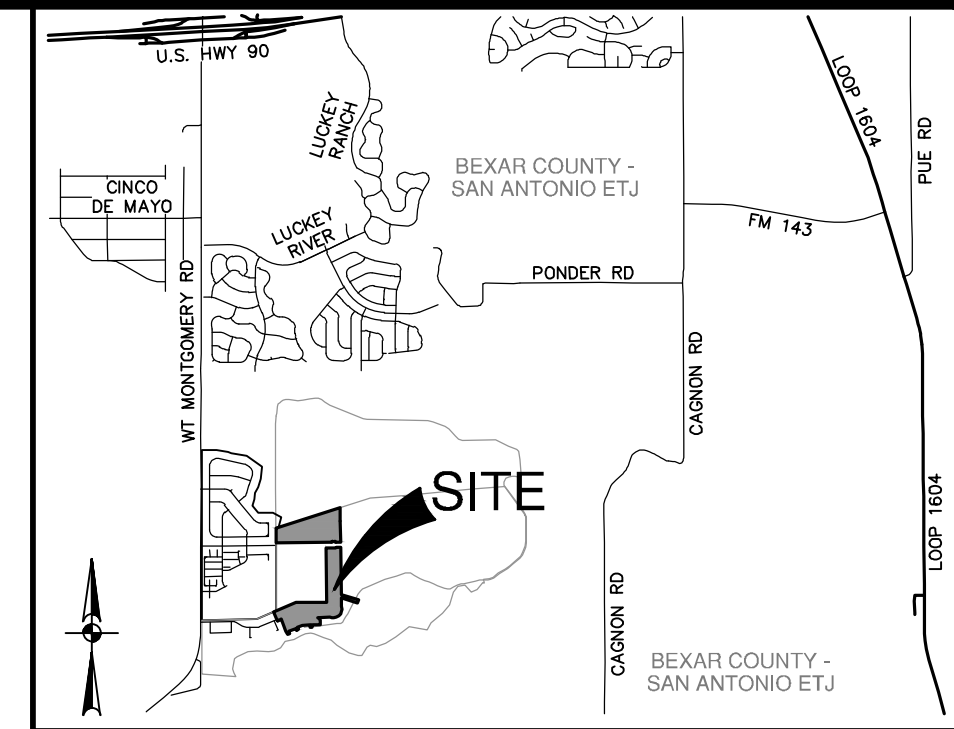
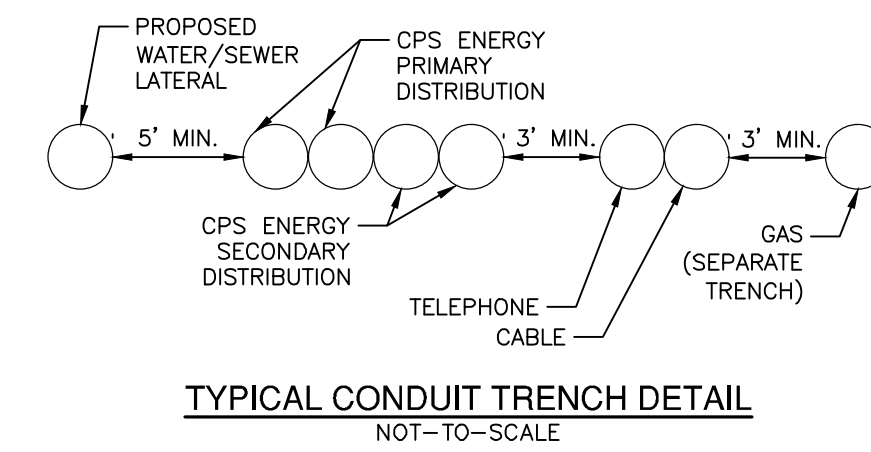
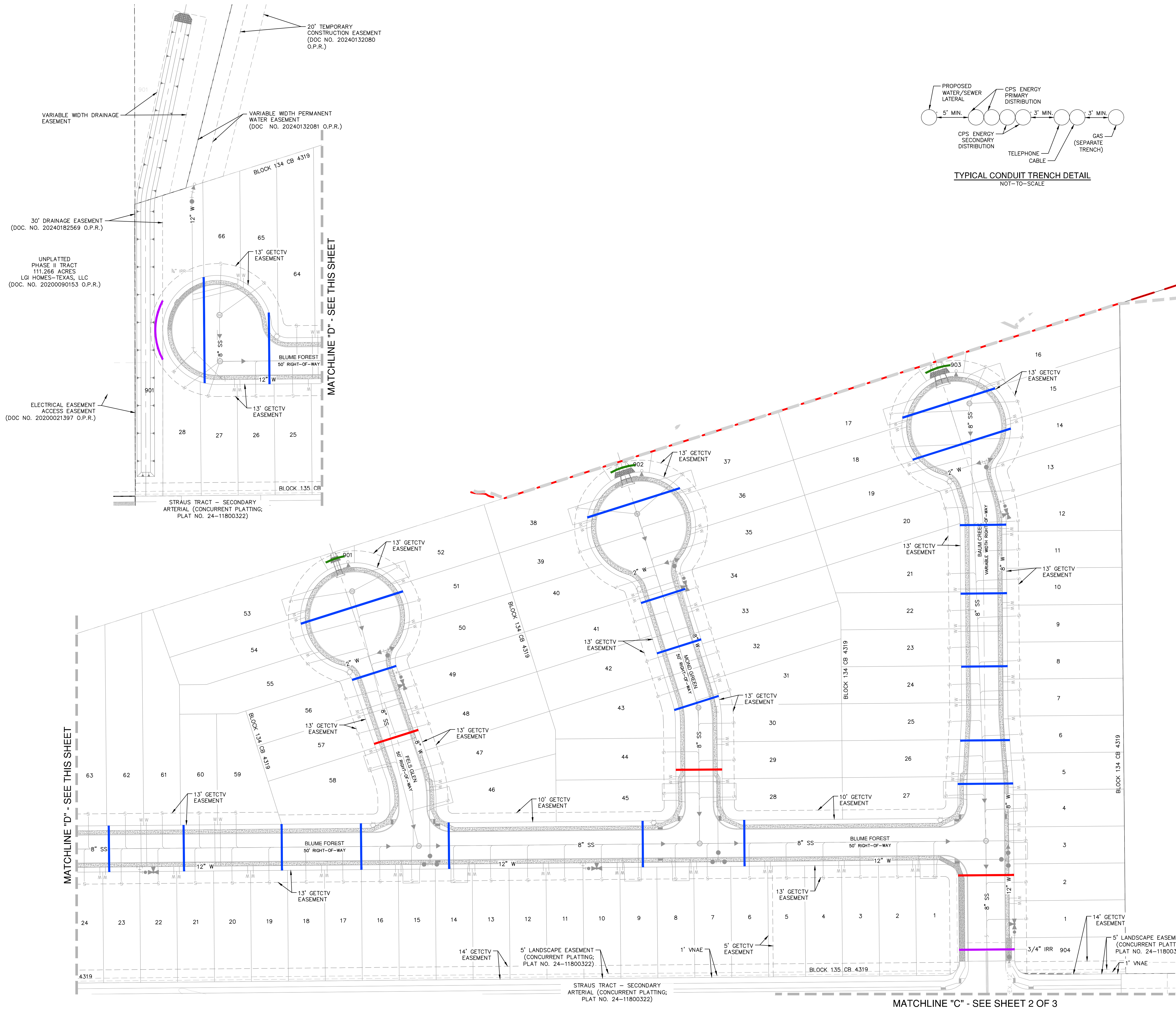
**SSOM RANCH UNIT 1B**  
**SAN ANTONIO, TEXAS**  
**CONDUIT CROSSING PLAN**

LAT NO. 24-11800449  
 OB NO. 13055-21  
 DATE JULY 2025  
 DESIGNER AA  
 CHECKED AD DRAWN AA  
 SHEET 2 OF 3



Date: Aug 01, 2025 8:29am User ID: edwda  
File: P:\130\155\21\Design\Exhibits\Conduit Crossing Plp.dwg

THIS DOCUMENT HAS BEEN PRODUCED FROM MATERIAL THAT WAS STORED AND/OR TRANSMITTED ELECTRONICALLY AND MAY HAVE BEEN INADVERTENTLY ALTERED. RELY ONLY ON FINAL HARDCOPY MATERIALS BEARING THE CONSULTANT'S ORIGINAL SIGNATURE AND SEAL. AERIAL IMAGERY PROVIDED BY GOOGLE/UNLESS OTHERWISE NOTED. Imagery © 2015, CAPOCO, Digital Globe, Texas Orthomography Program, USDA Farm Service Agency.



UTILITY LEGEND	
PROJECT LIMITS	---
EXISTING WATER	---
EXISTING SEWER	---
PROPOSED SEWER	---
PROPOSED WATER	---
PROPOSED WYE & LATERAL	---
SINGLE WATER SERVICE	---
DUAL WATER SERVICE	---
STREET LIGHTS	---

CONDUIT	SIZE/TYPE	MIN. DEPTH OF COVER
A	3-6" PVC (SCH 80)(ELEC)	36"
	2-6" PVC (SCH 40)(GAS)	36"
	4-4" PVC (SCH 40)(TELE)	36"
B	2-6" PVC (SCH 80)(ELEC)	36"
	2-6" PVC (SCH 40)(GAS)	36"
	4-4" PVC (SCH 40)(TELE)	36"
C	2-6" PVC (SCH 80)(ELEC)	36"
	4-4" PVC (SCH 40)(TELE)	36"
D	3-6" PVC (SCH 80)(ELEC)	36"
	4-4" PVC (SCH 40)(TELE)	36"
E	3-6" PVC (SCH 80)(ELEC)	36"
	2-8" PVC (SCH 40)(GAS)	36"
	4-4" PVC (SCH 40)(TELE)	36"
F	5-6" PVC (SCH 80)(ELEC)	36"
	2-8" PVC (SCH 40)(GAS)	36"
	4-4" PVC (SCH 40)(TELE)	36"

- BEXAR COUNTY ROW NOTES:**
- A BEXAR COUNTY ROW PERMIT MUST BE OBTAINED BEFORE WORKING IN BEXAR COUNTY ROW. CONTRACTOR SHALL COORDINATE A TRAFFIC CONTROL PLAN FOR ALL WORK WITHIN THE ROW. ADDITIONAL WARNING SIGNS MAY BE RECOMMENDED BY THE ENGINEER ONCE THE ROADWAYS ARE CONSTRUCTED.
- CONDUIT NOTES:**
- CONTRACTOR SHALL INSTALL PERMANENT MARKERS IN PROPOSED CURB WHERE CONDUITS CROSS THE ROADWAY (BOTH SIDES).
  - CONDUITS SHALL BE PVC WITH MINIMUM BURY OF 36 INCHES BELOW PROPOSED FINISHED GRADE. SCHEDULE 80 TO BE USED FOR CPS CONDUITS, ALL OTHER CONDUITS ARE SCHEDULE 40.
  - ALL CONDUITS SHALL BE EXTENDED BEHIND CURBS OR PROPOSED SIDEWALKS A MINIMUM OF 3 FEET AND CAPPED FOR FUTURE USE.
  - ALL CONDUIT SLEEVES TO BE USED FOR ELECTRIC, GAS, OR TELECOMMUNICATION UTILITY CROSSINGS SHALL BE INSTALLED TO MEET OR EXCEED DESIGN REQUIREMENTS FOR THE UTILITY AGENCY WHICH THEY ARE SERVING, INCLUDING BUT NOT LIMITED TO THE DEPTH, TRENCH PLACEMENT, AND PROXIMITY TO OTHER UTILITIES. THE CONTRACTOR IS SOLELY RESPONSIBLE FOR VERIFYING AND INSTALLING THE CONDUIT SLEEVES TO MEET THESE SPECIFICATIONS INCLUDING COORDINATING WITH THE UTILITY AGENCY FOR ANY REQUIRED INSPECTIONS.
- TRENCH EXCAVATION SAFETY PROTECTION:**
- CONTRACTOR AND/OR CONTRACTOR'S INDEPENDENTLY RETAINED EMPLOYEE OR STRUCTURAL DESIGN/ GEOTECHNICAL/ SAFETY/EQUIPMENT CONSULTANT, IF ANY, SHALL REVIEW THESE PLANS AND ANY AVAILABLE GEOTECHNICAL INFORMATION AND THE ANTICIPATED INSTALLATION SITES WITHIN THE PROJECT WORK AREA IN ORDER TO IMPLEMENT CONTRACTOR'S TRENCH EXCAVATION SAFETY PROTECTION SYSTEMS, PROGRAMS AND/OR PROCEDURES FOR THE PROJECT DESCRIBED IN THE CONTRACT DOCUMENTS. THE CONTRACTOR'S IMPLEMENTATION OF THESE SYSTEMS, PROGRAMS AND/OR PROCEDURES SHALL PROVIDE FOR ADEQUATE TRENCH EXCAVATION SAFETY PROTECTION THAT COMPLY WITH AS A MINIMUM, OSHA STANDARDS FOR TRENCH EXCAVATIONS. SPECIFICALLY, CONTRACTOR AND/OR CONTRACTOR'S INDEPENDENTLY RETAINED EMPLOYEE OR SAFETY CONSULTANT SHALL IMPLEMENT A TRENCH SAFETY PROGRAM IN ACCORDANCE WITH OSHA STANDARDS GOVERNING THE PRESENCE AND ACTIVITIES OF INDIVIDUALS WORKING IN AND AROUND TRENCH EXCAVATION.

**CAUTION!!**

CONTRACTOR SHALL BE REQUIRED TO LOCATE ALL PUBLIC OR PRIVATE UTILITIES INCLUDING BUT NOT LIMITING TO: WATER, SEWER, TELEPHONE AND FIBER OPTIC LINES, SITE LIGHTING ELECTRIC, SECONDARY ELECTRIC, PRIMARY ELECTRICAL DUCTBANKS, IRRIGATION FACILITIES, AND GAS LINES. ANY UTILITY CONFLICTS THAT ARISE SHOULD BE COMMUNICATED TO THE ENGINEER IMMEDIATELY AND PRIOR TO CONSTRUCTION. THE CONTRACTOR SHALL CONTACT 1-800-DIG-TESS A MINIMUM OF 48 HOURS PRIOR TO THE START OF CONSTRUCTION. ANY DAMAGE TO EXISTING UTILITIES SHALL BE THE SOLE RESPONSIBILITY OF THE CONTRACTOR AND THE REPAIR SHALL BE AT CONTRACTOR'S SOLE EXPENSE WHETHER THE UTILITY IS SHOWN ON THESE PLANS OR NOT.

NO. REVISION

DATE

**PAPE-DAWSON**  
2000 NW LOOP 410 | SAN ANTONIO, TX 78213 | 210.375.9000  
TEXAS SURVEYING FIRM #470 | TEXAS SURVEYING FIRM #10028800

**BLOSSOM RANCH UNIT 1B**  
SAN ANTONIO, TEXAS

CONDUIT CROSSING PLAN

PLAT NO. 24-11800449

JOB NO. 13055-21

DATE JULY 2025

DRAWN AA

CHECKED AD

DESIGNED AA

SHEET 3 OF 3