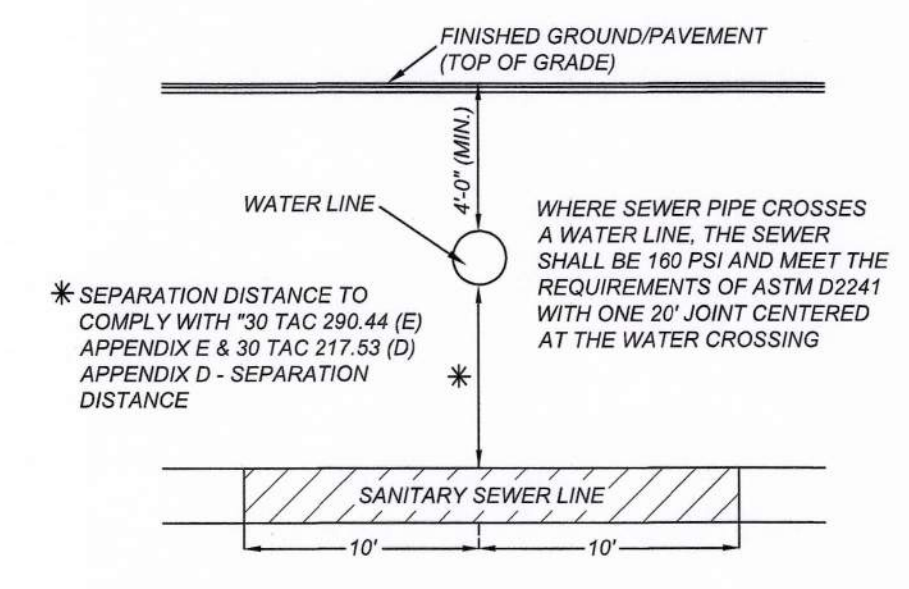


CAUTION:
THE CONTRACTOR SHALL BE REQUIRED TO LOCATE ALL PUBLIC OR PRIVATE UTILITIES INCLUDING BUT NOT LIMITED TO: WATER, SEWER, TELEPHONE AND FIBER OPTIC LINES, SITE LIGHTING ELECTRIC, SECONDARY ELECTRIC, PRIMARY ELECTRICAL DUCTBANKS, LANDSCAPE IRRIGATION FACILITIES, AND GAS LINES. ANY UTILITY CONFLICTS THAT ARISE SHOULD BE COMMUNICATED TO THE ENGINEER IMMEDIATELY AND PRIOR TO CONSTRUCTION. THE CONTRACTOR SHALL CONTACT 1-800-DIG-TESS A MINIMUM OF 48 HOURS PRIOR TO THE START OF CONSTRUCTION. ANY DAMAGE TO EXISTING UTILITIES SHALL BE THE SOLE RESPONSIBILITY OF THE CONTRACTOR AND THE REPAIR SHALL BE AT CONTRACTOR'S SOLE EXPENSE WHETHER THE UTILITY IS SHOWN ON THESE PLANS OR NOT.

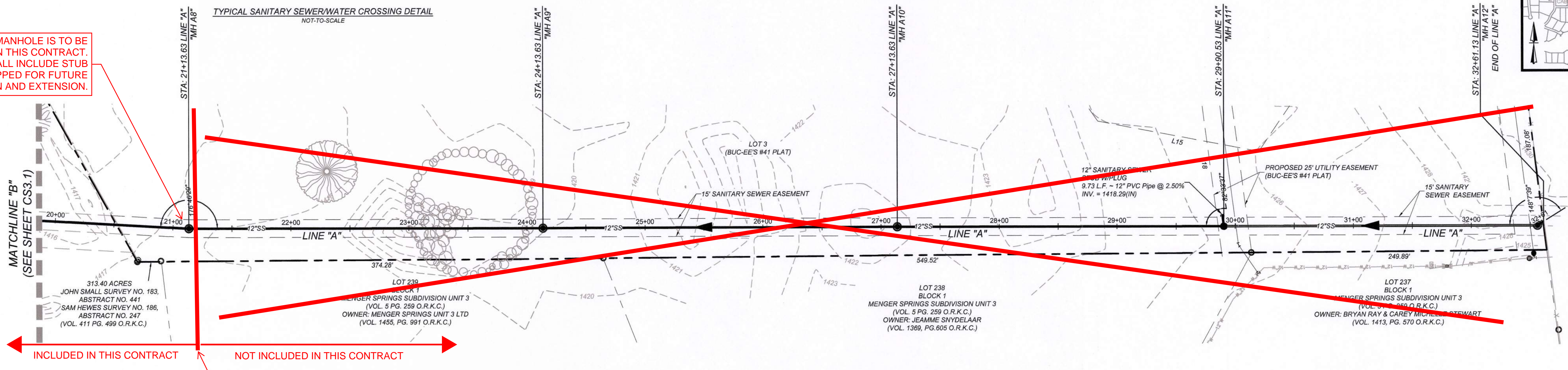


TRENCH EXCAVATION SAFETY PROTECTION
THE CONTRACTOR AND/OR CONTRACTOR'S INDEPENDENTLY RETAINED EMPLOYEE OR STRUCTURAL DESIGN/GEOTECHNICAL SAFETY/EQUIPMENT CONSULTANT, IF ANY, SHALL REVIEW THESE PLANS AND ANY AVAILABLE GEOTECHNICAL INFORMATION AND THE ANTICIPATED INSTALLATION SITES WITHIN THE PROJECT WORK AREA IN ORDER TO IMPLEMENT CONTRACTOR'S TRENCH EXCAVATION SAFETY PROTECTION SYSTEMS, PROGRAMS AND/OR PROCEDURES FOR THE PROJECT DESCRIBED IN THE CONTRACT DOCUMENTS. THE CONTRACTOR'S IMPLEMENTATION OF THESE SYSTEMS, PROGRAMS AND/OR PROCEDURES SHALL PROVIDE FOR ADEQUATE TRENCH EXCAVATION SAFETY PROTECTION THAT COMPLY WITH AS A MINIMUM, OSHA STANDARDS FOR TRENCH EXCAVATIONS. SPECIFICALLY, CONTRACTOR AND/OR CONTRACTOR'S INDEPENDENTLY RETAINED EMPLOYEE OR SAFETY CONSULTANT SHALL IMPLEMENT A TRENCH SAFETY PROGRAM IN ACCORDANCE WITH OSHA STANDARDS GOVERNING THE PRESENCE AND ACTIVITIES OF INDIVIDUALS WORKING IN AND AROUND TRENCH EXCAVATION.

COMPACTION NOTE:
THE CONTRACTOR SHALL BE RESPONSIBLE FOR MEETING 98% COMPACTION ON ALL TRENCH BACKFILL AND PAYING FOR THE TESTS TO BE PERFORMED BY A THIRD PARTY. COMPACTION TESTS WILL BE DONE AT ONE LOCATION POINT RANDOMLY SELECTED OR AS INDICATED BY THE SAWS & SARA INSPECTOR/TEST ADMINISTRATOR, PER EACH 12 INCH LIFT PER 400 LINEAR FEET AT A MINIMUM. PERMITS AND/OR WILL NOT BE ACCEPTED AND FINALIZED BY SAWS & SARA WITHOUT THIS REQUIREMENT BEING MET AND VERIFIED BY PROVIDING ALL NECESSARY DOCUMENTED TEST RESULTS.

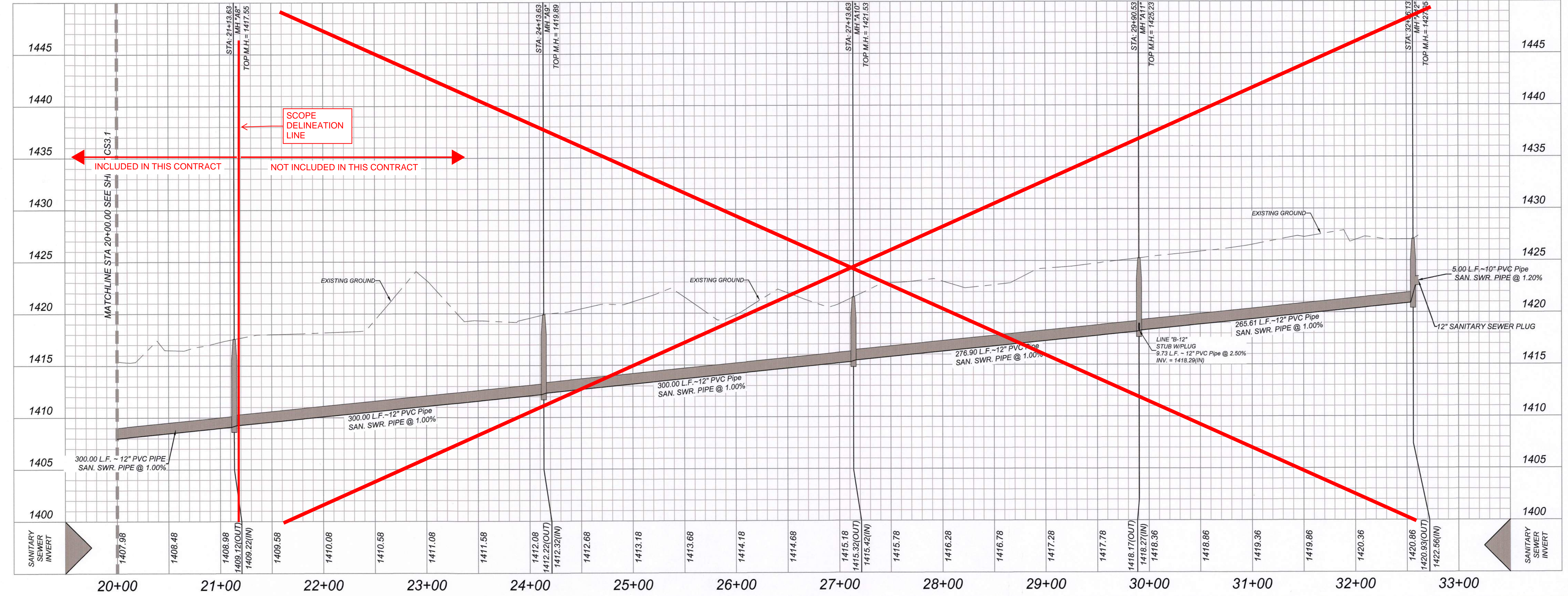


THIS MANHOLE IS TO BE INCLUDED IN THIS CONTRACT. MANHOLE SHALL INCLUDE STUB TO SOUTH, CAPPED FOR FUTURE CONNECTION AND EXTENSION.



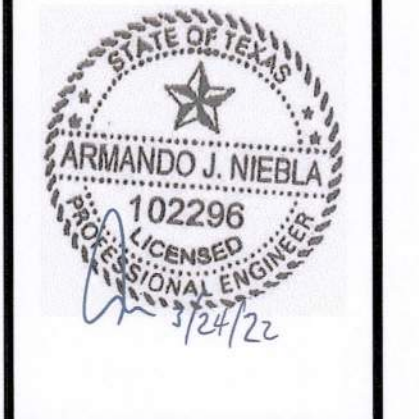
LINE "A"
STA: 20+00.00 - END

HORZ SCALE: 1"=50'
VERT SCALE: 1"=5'



K&W
ENGINEERS + SURVEYING
3421 Pleasanton Pkwy, Suite 200, San Antonio, TX 78231
Phone #: (210) 979-8444 • Fax #: (210) 979-8441
TBE# E-5613 • TBE#S Firm #: 1012230

ISSUE DATE:
REVISIONS:



12" PUBLIC SANITARY SEWER IMPROVEMENTS
BOERNE, TEXAS
SANITARY SEWER PLAN AND PROFILE "A"

PLAT NO.:
JOB NO.:
DATE:
DRAWN: CHECKED:
SHEET NUMBER:
CS3.2

File: 14_03_2022_2:44pm - User: J.P. Miller
File: A:\S\B\01\01\Drawings\CS3\SP3\30701.dwg