

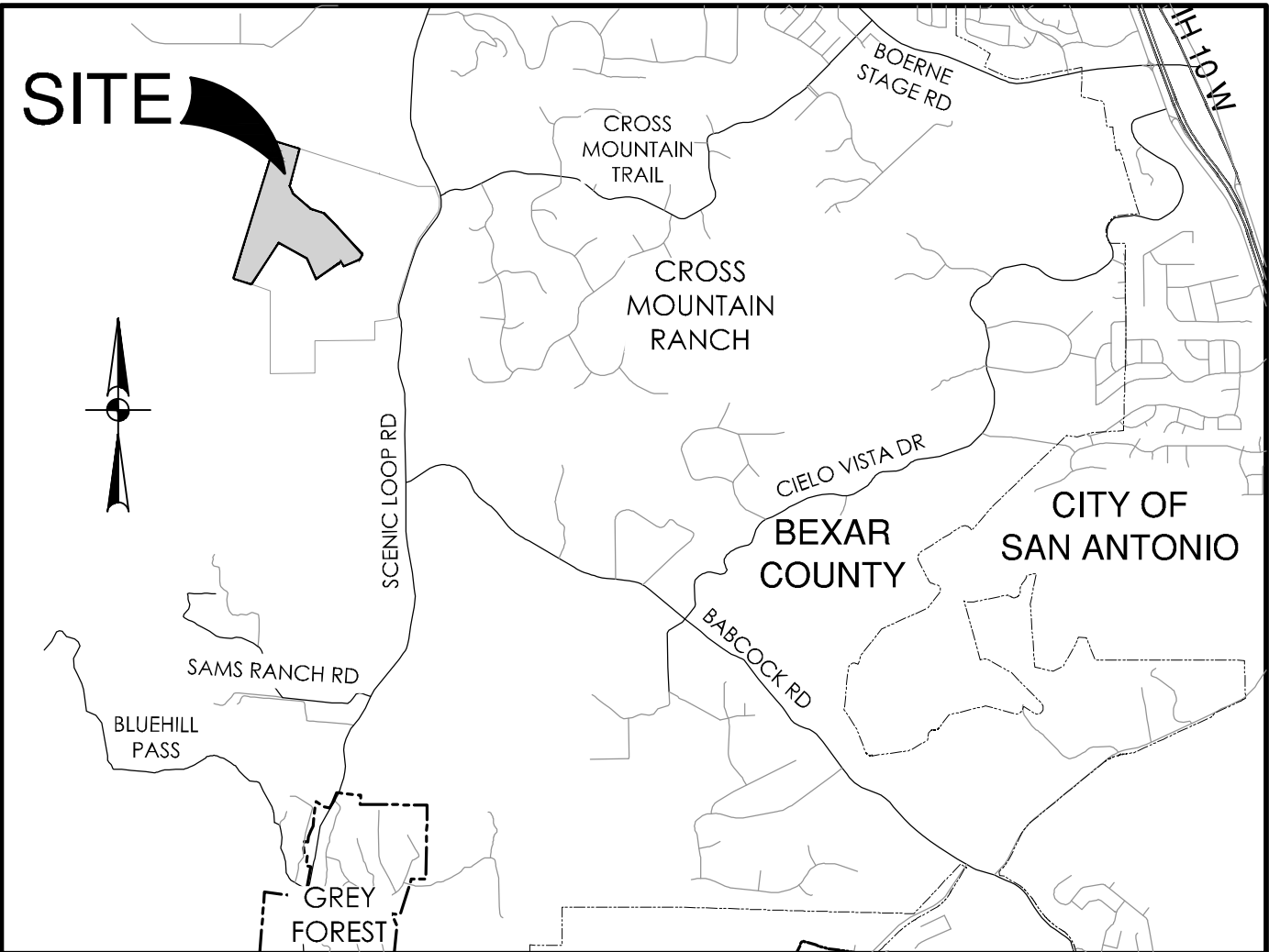
CANTERA HILLS - UNIT 4 (ENCLAVE)

SAN ANTONIO, TEXAS

CIVIL CONSTRUCTION PLANS

Sheet List Table

Sheet Description	Sheet No.
COVER SHEET	C0.00
MASTER DRAINAGE PLAN	C1.00
DRAIN A PLAN & PROFILE (STA. 1+06.00 TO END)	C1.01
DRAIN A-1&A-2 PLAN & PROFILE	C1.02
DRAIN B PLAN & PROFILE (STA. 1+05.00 TO END)	C1.03
DRAIN C PLAN & PROFILE (STA. 1+20.00 TO END)	C1.04
DRAIN C DETAILS	C1.05
DRAIN D PLAN & PROFILE (STA. 1+08.32 TO END)	C1.06
DRAINAGE DETAILS	C1.10
DRAINAGE DETAILS	C1.11
DRAINAGE DETAILS	C1.12
DRAINAGE DETAILS	C1.13
DRAINAGE DETAILS	C1.14
BECKINSALE LANE (PRIVATE STREET) PLAN & PROFILE (STA. 1+00.00 TO STA. 9+50.00)	C2.00
BECKINSALE LANE (PRIVATE STREET) PLAN & PROFILE (STA. 9+50.00 TO END)	C2.01
ELLIS HILL (PRIVATE STREET) PLAN & PROFILE (STA. 1+33.44 TO END)	C2.02
STREET DETAILS	C2.10
OVERALL SIGNAGE PLAN	C3.00
OVERALL SIGNAGE PLAN	C3.01
SIGNAGE DETAILS	C3.10
SIGNAGE DETAILS	C3.11



LOCATION MAP
NOT TO SCALE

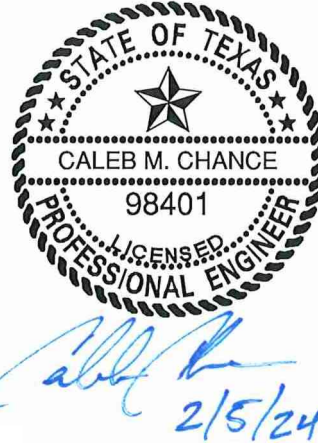
PREPARED FOR:

CANTERA HILLS DEVELOPMENT, LTD
11 LYNN BATTS LANE SUITE 100
SAN ANTONIO, TEXAS 78218

NOVEMBER 2024



2000 NW LOOP 410 | SAN ANTONIO, TX 78213 | 210.375.9000
TEXAS ENGINEERING FIRM #470 | TEXAS SURVEYING FIRM #10028800



Sheet List Table

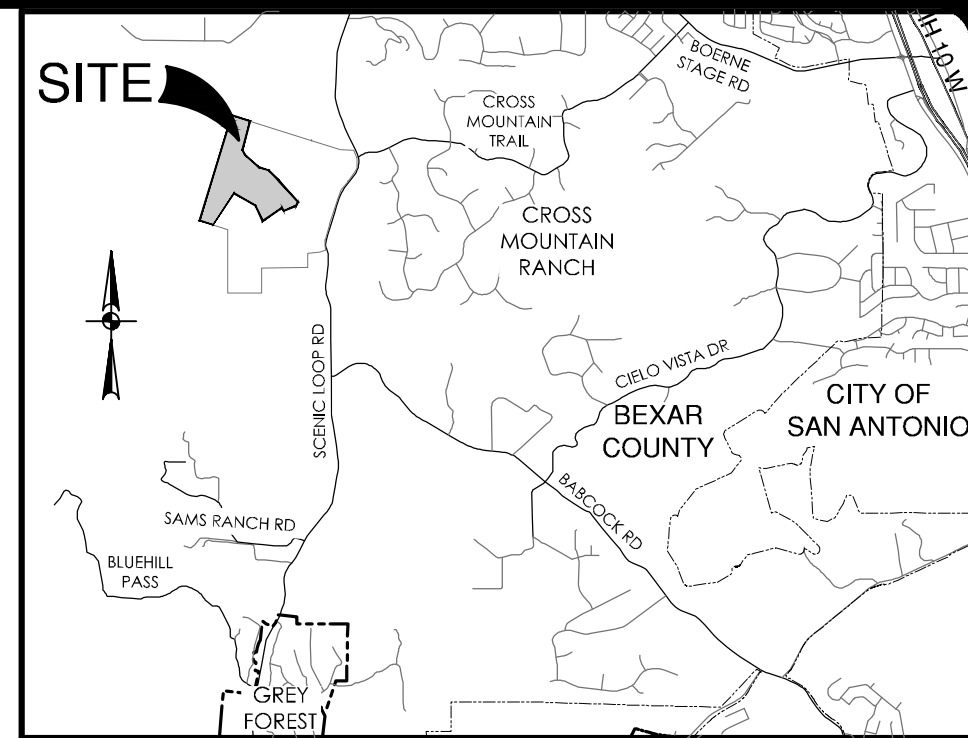
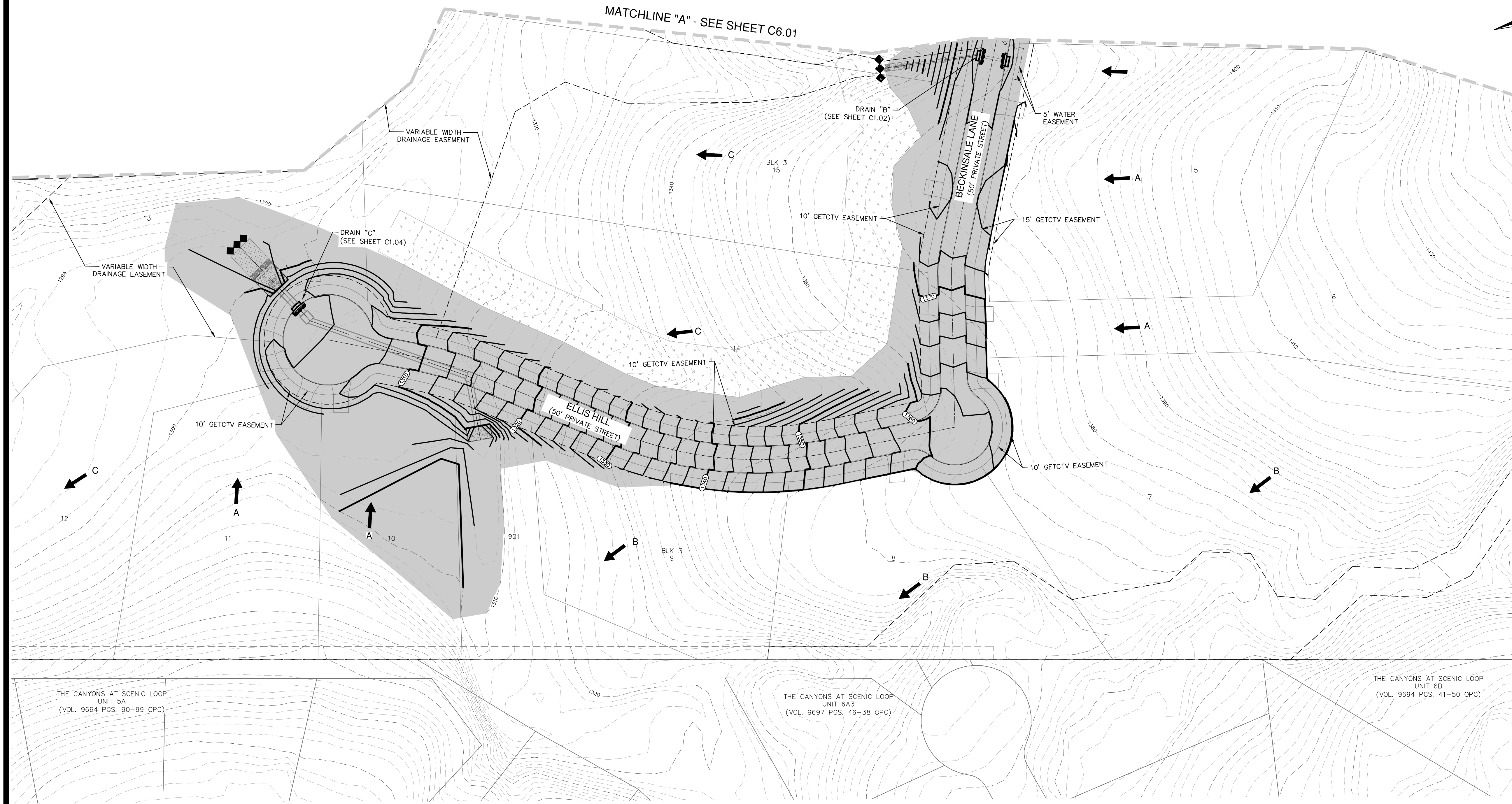
Sheet Description	Sheet No.
OVERALL WATER DISTRIBUTION PLAN	C4.00
OVERALL WATER DISTRIBUTION PLAN	C4.01
WATER DISTRIBUTION PLAN DETAILS	C4.10
WATER DISTRIBUTION PLAN NOTES	C4.11
OVERALL UTILITY PLAN	C5.00
OVERALL UTILITY PLAN	C5.01
OVERALL GRADING PLAN	C6.00
OVERALL GRADING PLAN	C6.01
STORM WATER POLLUTION PREVENTION PLAN	C7.00
STORM WATER POLLUTION PREVENTION PLAN	C7.01
STORM WATER POLLUTION PREVENTION PLAN DETAILS	C7.10

WATER (SAWS PRESSURE ZONE 8)

DEVELOPER'S NAME: CANTERA HILLS DEVELOPMENT, LTD			
ADDRESS: 11 LYNN BATTS LANE SUITE 100			
CITY: SAN ANTONIO	STATE: TEXAS	ZIP: 78218	
PHONE# (210)-828-6131	FAX# (210)-828-0504		
SAWS BLOCK MAP# 100662 TOTAL EDU'S 21 TOTAL ACREAGE 67.45			
TOTAL LINEAR FOOTAGE OF PIPE 12" - 2147' PLAT NO. 24-11800458			
NUMBER OF LOTS 21 SAWS JOB NO. XXXX-XX			

SHEET C0.00

Date: Feb. 07, 2025, 12:12pm User: ID: cscgsmartin
File: P:\B0103\21\Watershed\SWP3\SWP3-000021.dwg



SWPPP LEGEND

PROJECT LIMITS	---
EXISTING CONTOUR	---
PROPOSED CONTOUR	---
FLOW ARROW (EXISTING)	→
FLOW ARROW (PROPOSED)	→
SILT FENCE	
ROCK BERM	
GRAVEL FILTER BAGS	
GRATE INLET PROTECTION	
SEDIMENT CONTROL ROLLS	
LIMITS OF DISTURBED AREA (8.70 AC)	
STABILIZED CONSTRUCTION ENTRANCE/EXIT (FIELD LOCATE)	
CONSTRUCTION EQUIPMENT, VEHICLE & MATERIALS STORAGE AREA (FIELD LOCATE)	
CONCRETE TRUCK WASH-OUT PIT (FIELD LOCATE)	
50' VEGETATIVE STRIP (FIELD LOCATE)	

- GENERAL NOTES**
- DO NOT DISTURB VEGETATED AREAS (TREES, GRASS, WEEDS, BRUSH, ETC.) ANY MORE THAN NECESSARY FOR CONSTRUCTION.
 - CONSTRUCTION ENTRANCE/EXIT LOCATION, CONCRETE WASH-OUT PIT, AND CONSTRUCTION EQUIPMENT AND MATERIAL STORAGE YARD TO BE DETERMINED IN THE FIELD.
 - STORM WATER POLLUTION PREVENTION CONTROLS MAY NEED TO BE MODIFIED IN THE FIELD TO ACCOMPLISH THE DESIRED EFFECT. ALL MODIFICATIONS ARE TO BE NOTED ON THIS EXHIBIT AND SIGNED AND DATED BY THE RESPONSIBLE PARTY.
 - RESTRICT ENTRY/EXIT TO THE PROJECT SITE TO DESIGNATED LOCATIONS BY USE OF ADEQUATE FENCING, IF NECESSARY.
 - ALL STORM WATER POLLUTION PREVENTION CONTROLS ARE TO BE MAINTAINED AND IN WORKING CONDITIONS AT ALL TIMES.
 - FOR A COMPLETE LISTING OF TEMPORARY STORM WATER POLLUTION PREVENTION CONTROLS REFER TO THE TPDES STORM WATER POLLUTION PREVENTION PLAN.
 - STORM WATER POLLUTION PREVENTION STRUCTURES SHOULD BE CONSTRUCTED WITHIN THE SITE BOUNDARIES. SOME OF THESE FEATURES MAY BE SHOWN OUTSIDE THE SITE BOUNDARIES ON THIS PLAN FOR VISUAL CLARITY.
 - AS SOON AS PRACTICAL, ALL DISTURBED SOIL THAT WILL NOT BE COVERED BY IMPERVIOUS COVER SUCH AS PARKWAY AREAS, EASEMENT AREAS, EMBANKMENT SLOPES, ETC. WILL BE STABILIZED PER APPLICABLE PROJECT SPECIFICATIONS.
 - BEST MANAGEMENT PRACTICES MAY BE INSTALLED IN STAGES TO COINCIDE WITH THE DISTURBANCE OF UPGRADIENT AREAS.
 - BEST MANAGEMENT PRACTICES MAY BE REMOVED IN STAGES ONCE THE WATERSHED FOR THAT PORTION CONTROLLED BY THE BEST MANAGEMENT PRACTICES HAS BEEN STABILIZED IN ACCORDANCE WITH TPDES REQUIREMENTS.
 - UPON COMPLETION OF THE PROJECT, INCLUDING SITE STABILIZATION, AND BEFORE FINAL PAYMENT IS ISSUED, CONTRACTOR SHALL REMOVE ALL SEDIMENT AND EROSION CONTROL MEASURES, PAYING SPECIAL ATTENTION TO ROCK BERMS IN DRAINAGE FEATURES.
 - WHERE VEGETATED FILTER STRIPS ARE INDICATED, CONTRACTOR SHALL VERIFY THAT SUFFICIENT VEGETATION EXISTS. OTHERWISE CONTRACTOR SHALL PLACE SILT FENCING IN LIEU OF VEGETATED FILTER STRIP.
 - SHADED AREA DENOTES LIMITS OF DISTURBED AREAS. OTHER AREAS WITHIN THE PROJECT LIMITS, WITH THE EXCEPTION OF A CONSTRUCTION EQUIPMENT AND MATERIAL STORAGE YARD, ARE NOT A PART OF THIS TPDES STORM WATER POLLUTION PREVENTION PLAN (SWP3) AND WILL NOT BE DISTURBED BY CIVIL CONSTRUCTION ACTIVITIES. HOUSE CONSTRUCTION ACTIVITIES WILL REQUIRE A SEPARATE STORM WATER POLLUTION PREVENTION PLAN.
 - PRIOR TO BEGINNING CONSTRUCTION, CONTRACTOR SHALL COORDINATE PLACEMENT OF TEMPORARY BEST MANAGEMENT PRACTICES WITHIN TxDOT RIGHT-OF-WAY WITH TxDOT.
 - CPS ENERGY WILL FUNCTION AS A SECONDARY OPERATOR ON THIS PROJECT AND WILL BE INSTALLING ELECTRIC UTILITIES FOR ON-SITE CONSTRUCTION AND OFF-SITE FEED TO THE PROJECT.
 - A BEXAR COUNTY ROW PERMIT MUST BE OBTAINED BEFORE WORKING IN ANY BEXAR COUNTY ROW.

THE ENGINEERING SEAL HAS BEEN AFFIXED TO THIS SHEET ONLY FOR THE PURPOSE OF DEMONSTRATING COMPLIANCE WITH THE TPDES-STORM WATER POLLUTION PREVENTION PLAN (SWP3) REGULATIONS.

THIS SHEET HAS BEEN PREPARED FOR PURPOSES OF THE SWP3 ONLY. ALL OTHER CIVIL ENGINEERING RELATED INFORMATION SHOULD BE ACQUIRED FROM THE APPROPRIATE SHEET IN THE CIVIL IMPROVEMENT PLANS.

SWP3 MODIFICATIONS		
DATE	SIGNATURE	DESCRIPTION

DATE

NO. REVISION

STATE OF TEXAS
CALEB M. CHANCE
98401
LICENSED PROFESSIONAL ENGINEER
2/7/25

PAPE-DAWSON ENGINEERS
2000 HW LOOP 410 | SAN ANTONIO, TX 78213 | 210.375.9000
TEXAS ENGINEERING FIRM #470 | TEXAS SURVEYING FIRM #1008800

CANTERA HILLS - UNIT 4 (ENCLAVE)
SAN ANTONIO, TEXAS

STORM WATER POLLUTION PREVENTION PLAN

PLAT NO. 24-11800458
JOB NO. 8009-21
DATE NOVEMBER 2024
DESIGNER RA
CHECKED BS DRAWN EG
SHEET C7.00

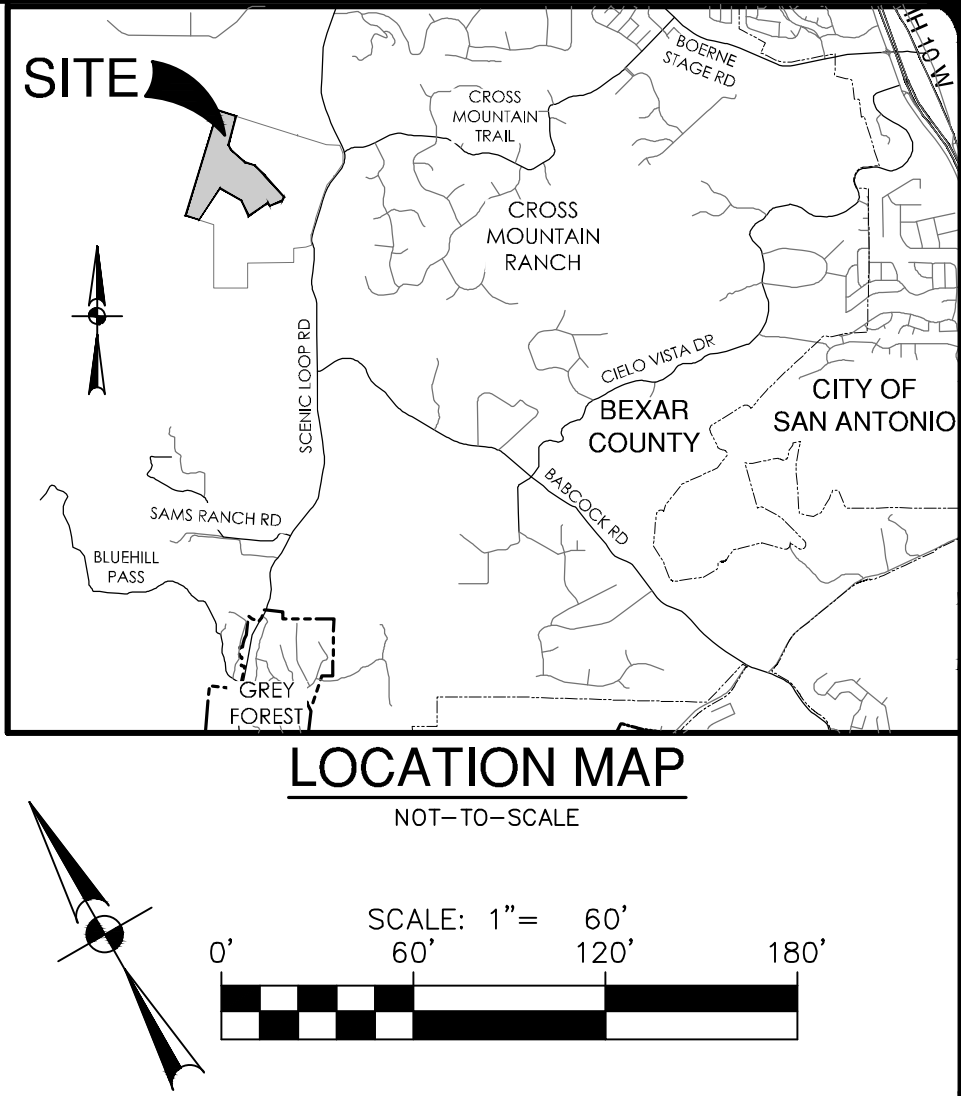
GENERAL NOTES

- DO NOT DISTURB VEGETATED AREAS (TREES, GRASS, WEEDS, BRUSH, ETC.) ANY MORE THAN NECESSARY FOR CONSTRUCTION.
- CONSTRUCTION ENTRANCE/EXIT LOCATION, CONCRETE WASH-OUT PIT, AND CONSTRUCTION EQUIPMENT AND MATERIAL STORAGE YARD TO BE DETERMINED IN THE FIELD.
- STORM WATER POLLUTION PREVENTION CONTROLS MAY NEED TO BE MODIFIED IN THE FIELD TO ACCOMPLISH THE DESIRED EFFECT. ALL MODIFICATIONS ARE TO BE NOTED ON THIS EXHIBIT AND SIGNED AND DATED BY THE RESPONSIBLE PARTY.
- RESTRICT ENTRY/EXIT TO THE PROJECT SITE TO DESIGNATED LOCATIONS BY USE OF ADEQUATE FENCING, IF NECESSARY.
- ALL STORM WATER POLLUTION PREVENTION CONTROLS ARE TO BE MAINTAINED AND IN WORKING CONDITIONS AT ALL TIMES.
- FOR A COMPLETE LISTING OF TEMPORARY STORM WATER POLLUTION PREVENTION CONTROLS REFER TO THE TPDES STORM WATER POLLUTION PREVENTION PLAN.
- STORM WATER POLLUTION PREVENTION STRUCTURES SHOULD BE CONSTRUCTED WITHIN THE SITE BOUNDARIES. SOME OF THESE FEATURES MAY BE SHOWN OUTSIDE THE SITE BOUNDARIES ON THIS PLAN FOR VISUAL CLARITY.
- AS SOON AS PRACTICAL, ALL DISTURBED SOIL THAT WILL NOT BE COVERED BY IMPERVIOUS COVER SUCH AS PARKWAY AREAS, EASEMENT AREAS, EMBANKMENT SLOPES, ETC. WILL BE STABILIZED PER APPLICABLE PROJECT SPECIFICATIONS.
- BEST MANAGEMENT PRACTICES MAY BE INSTALLED IN STAGES TO COINCIDE WITH THE DISTURBANCE OF UPGRADE AREAS.
- BEST MANAGEMENT PRACTICES MAY BE REMOVED IN STAGES ONCE THE WATERSHED FOR THAT PORTION CONTROLLED BY THE BEST MANAGEMENT PRACTICES HAS BEEN STABILIZED IN ACCORDANCE WITH TPDES REQUIREMENTS.
- UPON COMPLETION OF THE PROJECT, INCLUDING SITE STABILIZATION, AND BEFORE FINAL PAYMENT IS ISSUED, CONTRACTOR SHALL REMOVE ALL SEDIMENT AND EROSION CONTROL MEASURES, PAYING SPECIAL ATTENTION TO ROCK BERMS IN DRAINAGE FEATURES.
- WHERE VEGETATED FILTER STRIPS ARE INDICATED, CONTRACTOR SHALL VERIFY THAT SUFFICIENT VEGETATION EXISTS, OTHERWISE CONTRACTOR SHALL PLACE SILT FENCING IN LIEU OF VEGETATED FILTER STRIP.
- SHADED AREA [Hatched Pattern] DENOTES LIMITS OF DISTURBED AREAS. OTHER AREAS WITHIN THE PROJECT LIMITS, WITH THE EXCEPTION OF A CONSTRUCTION EQUIPMENT AND MATERIAL STORAGE YARD, ARE NOT A PART OF THIS TPDES STORM WATER POLLUTION PREVENTION PLAN (SWP3) AND WILL NOT BE DISTURBED BY CIVIL CONSTRUCTION ACTIVITIES. HOUSE CONSTRUCTION ACTIVITIES WILL REQUIRE A SEPARATE STORM WATER POLLUTION PREVENTION PLAN.

- PRIOR TO BEGINNING CONSTRUCTION, CONTRACTOR SHALL COORDINATE PLACEMENT OF TEMPORARY BEST MANAGEMENT PRACTICES WITHIN TxDOT RIGHT-OF-WAY WITH TxDOT.
- CPS ENERGY WILL FUNCTION AS A SECONDARY OPERATOR ON THIS PROJECT AND WILL BE INSTALLING ELECTRIC UTILITIES FOR ON-SITE CONSTRUCTION AND OFF-SITE FEED TO THE PROJECT.
- A BEXAR COUNTY ROW PERMIT MUST BE OBTAINED BEFORE WORKING IN ANY BEXAR COUNTY ROW.

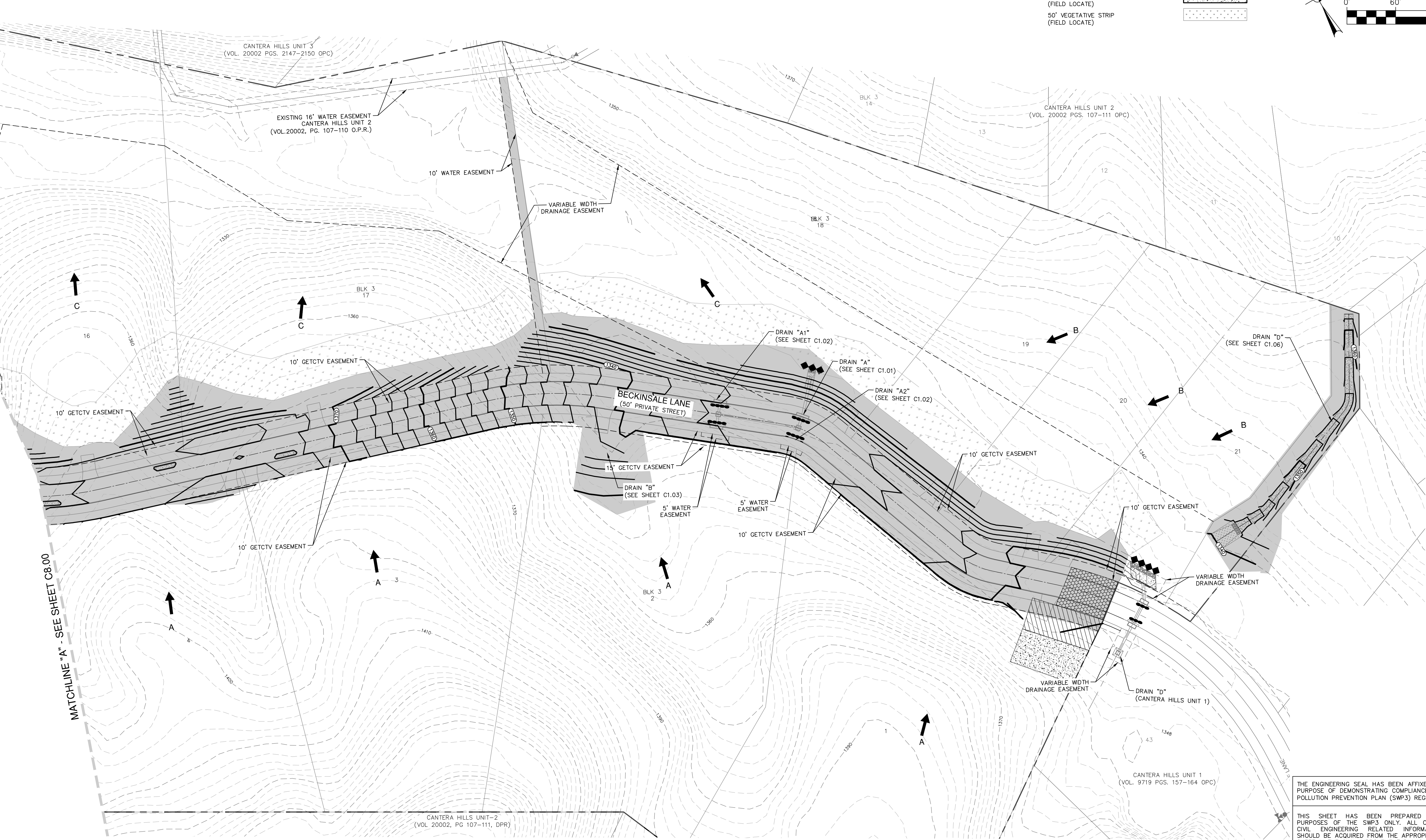
SWPPP LEGEND

- PROJECT LIMITS
EXISTING CONTOUR
PROPOSED CONTOUR
FLOW ARROW (EXISTING)
FLOW ARROW (PROPOSED)
SILT FENCE
ROCK BERM
GRAVEL FILTER BAGS
GRATE INLET PROTECTION
SEDIMENT CONTROL ROLLS
LIMITS OF DISTURBED AREA (8.70 AC)
STABILIZED CONSTRUCTION ENTRANCE/EXIT (FIELD LOCATE)
CONSTRUCTION EQUIPMENT, VEHICLE & MATERIALS STORAGE AREA (FIELD LOCATE)
CONCRETE TRUCK WASH-OUT PIT (FIELD LOCATE)
50' VEGETATIVE STRIP (FIELD LOCATE)



NO.	REVISION	DATE

STATE OF TEXAS
CALEB M. CHANCE
98401
LICENSED PROFESSIONAL ENGINEER
2/7/25



THE ENGINEERING SEAL HAS BEEN AFFIXED TO THIS SHEET ONLY FOR THE PURPOSE OF DEMONSTRATING COMPLIANCE WITH THE TPDES-STORM WATER POLLUTION PREVENTION PLAN (SWP3) REGULATIONS.

THIS SHEET HAS BEEN PREPARED FOR PURPOSES OF THE SWP3 ONLY. ALL OTHER CIVIL ENGINEERING RELATED INFORMATION SHOULD BE ACQUIRED FROM THE APPROPRIATE SHEET IN THE CIVIL IMPROVEMENT PLANS.

EXHIBIT 2

PAPE-DAWSON ENGINEERS

2000 HW LOOP 410 | SAN ANTONIO, TX 78213 | 210.375.9000
TEXAS ENGINEERING FIRM #470 | TEXAS SURVEYING FIRM #1008800

CANTERA HILLS - UNIT 4 (ENCLAVE)
SAN ANTONIO, TEXAS

STORM WATER POLLUTION PREVENTION PLAN

PLAT NO.	24-11800458
JOB NO.	8009-21
DATE	NOVEMBER 2024
DESIGNER	RA
CHECKED	BS
DRAWN	EG
SHEET	C7.01

