

GEOTECHNICAL ENGINEERING REPORT

**Canyon Ranch Unit 4 - Streets
FM 306
Spring Branch, Texas**

PSI Project No. 0312-3287-R1

PREPARED FOR:

**Lennar
100 Northeast Loop 410, Suite 1155
San Antonio, Texas 78216**

October 22, 2024

BY:

**PROFESSIONAL SERVICE INDUSTRIES, INC.
3 Burwood Lane
San Antonio, Texas 78216
Phone: (210) 342-9377**





Professional Service Industries, Inc.
3 Burwood Lane
San Antonio, Texas 78216
Office – (210) 342-9377

October 22, 2024

Lennar
100 Northeast Loop 410, Suite 1155
San Antonio, Texas 78216

Attn: Mr. Richard Mott

RE: GEOTECHNICAL ENGINEERING REPORT
Canyon Ranch Unit 4 - Streets
FM 306
Spring Branch, Texas
PSI Project No. 0312-3287-R1

Dear Mr. Mott:

Professional Service Industries, Inc. (PSI), an Intertek company, is pleased to submit this revised Geotechnical Engineering Report for the above-referenced project. This revised report includes the results from the field and laboratory investigation along with recommendations for use in preparation of the appropriate design and construction documents for this project.

PSI appreciates the opportunity to provide this revised Geotechnical Engineering Report and looks forward to continuing participation during the design and construction phases of this project. PSI also has great interest in providing materials testing and inspection services during the construction of this project and will be glad to meet with you to further discuss how we can be of assistance as the project advances.

If there are questions pertaining to this report, or if PSI may be of further service, please contact us at your convenience.

Respectfully submitted,

PROFESSIONAL SERVICE INDUSTRIES, INC.
Texas Board of Professional Engineers Certificate of Registration # F003307

Louis Ratcliffe, E.I.T.
Project Engineer



Philip L. Johnson, P.E.
Senior Geotechnical Engineer
Principal Consultant - Geotechnical Services

October 22, 2024



TABLE OF CONTENTS

Electronic Navigation: The TOC below and [Keywords](#) are hyperlinked to sections of relevance. The  Symbol will return the reader to the TOC.

	Page No.
TABLE OF CONTENTS.....	I
1.0 PROJECT INFORMATION	1
1.1 PROJECT AUTHORIZATION	1
1.2 PROJECT DESCRIPTION.....	1
1.3 PURPOSE AND SCOPE OF SERVICES.....	1
2.0 SITE AND SUBSURFACE CONDITIONS.....	3
2.1 SITE DESCRIPTION	3
2.2 FIELD EXPLORATION.....	3
2.3 LABORATORY TESTING PROGRAM.....	4
2.4 SITE GEOLOGY.....	4
2.5 SUBSURFACE CONDITIONS	4
3.0 GEOTECHNICAL EVALUATION AND RECOMMENDATIONS	6
3.1 DETENTION POND	6
4.0 PAVEMENT DESIGN RECOMMENDATIONS	7
4.1 PAVEMENT DESIGN PARAMETERS.....	7
4.2 PAVEMENT SECTION RECOMMENDATIONS	8
5.0 CONSTRUCTION CONSIDERATIONS.....	10
5.1 INITIAL SITE PREPARATION CONSIDERATIONS	11
5.2 MOISTURE SENSITIVE SOILS/WEATHER RELATED CONCERNS.....	12
5.3 EXCAVATION OBSERVATIONS	12
5.4 DRAINAGE CONSIDERATIONS.....	12
5.5 EXCAVATIONS AND TRENCHES	12
6.0 REPORT LIMITATIONS.....	14
APPENDIX	15
Site Vicinity Map	
Boring Location Plan	
Boring Logs	
Key to Terms and Symbols Used on Logs	

INDEX OF TABLES

	Page No.
Table 1.1: Project Description	1
Table 2.1: Site Description	3
Table 2.2: Field Exploration Summary	3
Table 2.3: Field Exploration Description	4
Table 2.4: Laboratory Testing Program	4
Table 2.5: Generalized Subsurface Profile Table	5
Table 3.1: Generalized Subsurface Profile Table	6
Table 4.1: Pavement Design Parameters and Assumptions.....	7
Table 4.2: Flexible Pavement Section Options	9
Table 4.3: Pavement Design and Construction Recommendations	9
Table 4.4: Compaction and Testing Recommendations for Pavement Areas.....	9
Table 5.1: Subgrade Preparation for Non-Structural - General Fill	11
Table 5.2: Fill Compaction Recommendations Outside of Building and Pavement Areas.....	11
Table 5.3: Considerations for Demolition, Abandoning Utilities and Tree Removal	11

1.0 PROJECT INFORMATION

1.1 PROJECT AUTHORIZATION

Professional Service Industries, Inc. (PSI), an Intertek company, has completed a field exploration and geotechnical evaluation for the proposed Canyon Ranch Unit 4 - Streets project. Mr. Richard Mott, representing Lennar, authorized PSI's services on July 11, 2024, by signing PSI Proposal No. 428360-1. PSI's proposal contained a proposed scope of work, lump sum fee, and PSI's General Conditions.

1.2 PROJECT DESCRIPTION

Based on information provided by the Client and PSI's review of a site plan entitled "Canyon Ranch Unit 4", prepared by BGE, Inc., dated March 27, 2024, and the results of this geotechnical investigation, a summary of our understanding of the proposed project is provided below in the following Project Description table.

TABLE 1.1: PROJECT DESCRIPTION

Project Items	Approximately 5,000 lineal feet of subdivision streets Two (2) Detention Ponds
Pavement for Parking and Drives	Flexible Asphalt (HMAC)
Design Traffic Load	Secondary Streets: 100,000 ESALs Collector Streets: 2,000,000 ESALs Arterial Streets: 3,000,000 ESALs

The geotechnical recommendations presented in this report are based on the available project information, structure locations, and the subsurface materials encountered during the field investigation. If the information presented above is incorrect, please inform PSI so that the recommendations presented in this report can be amended, as necessary. PSI will not be responsible for the implementation of provided recommendations if not notified of changes in the project.

1.3 PURPOSE AND SCOPE OF SERVICES

The purpose of this study is to evaluate the subsurface conditions at the site and develop geotechnical engineering recommendations and guidelines for use in preparing the design and other related construction documents for the proposed project. The scope of services included drilling soil borings, performing laboratory testing, and preparing this geotechnical engineering report.

This report briefly outlines the available project information, describes the site and subsurface conditions, and presents the following:

- General site development and subgrade preparation recommendations.
- Estimated potential soil movements associated with collapsing, shrinking and swelling soils and methods to reduce these movements.
- Recommendations for site excavation, fill compaction, and the use of on-site and imported fill material under pavements.
- Detention Basin considerations, including excavations, slope angles and infiltration characteristics.



- Recommendations for the design of flexible asphaltic pavement systems for the proposed residential streets per the County of Comal Pavement Design Standards.

The scope of services for this geotechnical exploration did not include an environmental, mold nor detailed seismic/fault assessment for determining the presence or absence of wetlands, or hazardous or toxic materials in the soil, bedrock, surface water, groundwater, or air on or below, or around this site. Statements in this report or on the boring logs regarding odors, colors, and unusual or suspicious items or conditions are strictly for informational purposes. The report also does not include a detailed settlement analysis or slope stability analysis.



2.0 SITE AND SUBSURFACE CONDITIONS

2.1 SITE DESCRIPTION

The following table provides a generalized description of the existing site conditions based on visual observations during the field activities, as well as other available information.

TABLE 2.1: SITE DESCRIPTION

Site Location	Latitude: 29.9504°; Longitude: -98.3486°
Site History	Undeveloped Land
Existing Site Ground Cover	Grass and brush
Existing Grade/Elevation Changes	Varies
Site Geology (Geologic Atlas of Texas)	Glen Rose Limestone (Kgr)
Site Boundaries/Neighboring Development	Undeveloped property surrounds the site
Ground Surface Soil Support Capability for Operational Stability and Site Access	Firm Enough for Field Equipment when Dry

2.2 FIELD EXPLORATION

Field exploration for the project consisted of drilling a total of **seven (7) borings**. The boring design element, approximate depths and drilling footage are provided in the following table.

TABLE 2.2: FIELD EXPLORATION SUMMARY

Design Element	Number of Borings	Boring Depth (ft)	Drilling Footage (feet)
Streets (B-01 to B-05)	5	15	75
Detention Ponds (D-01 & D-02)	2	20	40
TOTAL:	7	---	115

The boring locations were selected by PSI personnel and located in the field using a recreational-grade GPS system. Elevations of the ground surface at the boring locations were not provided and should be surveyed by others prior to construction, if required. We have estimated ground surface elevations at the boring locations from the topographic survey provided (or from Google Earth) and estimate an approximate 1-foot accuracy. The references to elevations of various subsurface strata are based on depths below existing grade at the time of drilling. The approximate boring locations are depicted on the Boring Location Plan provided in the Appendix.



TABLE 2.3: FIELD EXPLORATION DESCRIPTION

Drilling Equipment	Truck-Mounted Drilling Equipment
Drilling Method	Continuous Flight-Auger
Field Testing	Standard Penetration Test (ASTM D1586)
Sampling Procedure	ASTM D1586
Sampling Frequency	Continuously to a Depth of 10 Feet and at 5-foot Intervals Thereafter
Frequency of Groundwater Level Measurements	During and After Drilling
Boring Backfill Procedures	Soil Cuttings
Sample Preservation and Transportation Procedure	General Accordance with ASTM D4220

During field activities, the encountered subsurface conditions were observed, logged, and visually classified (in general accordance with ASTM D2487). Field notes were maintained to summarize soil types and descriptions, water levels, changes in subsurface conditions, and drilling conditions.

2.3 LABORATORY TESTING PROGRAM

PSI supplemented the field exploration with a laboratory testing program to determine additional engineering characteristics of the subsurface soils encountered. The laboratory testing program included:

TABLE 2.4: LABORATORY TESTING PROGRAM

Laboratory Test	Procedure Specification
Visual Classification	ASTM D2488
Moisture Content	ASTM D2216
Atterberg Limits	ASTM D4318
Material Finer than No. 200 Sieve	ASTM D1140

The laboratory testing program was conducted in general accordance with applicable ASTM Test Methods. The results of the laboratory tests are provided on the Boring Logs in the Appendix. Portions of samples not altered or consumed by laboratory testing will be discarded 60 days from the date shown on this report.

2.4 SITE GEOLOGY

We reviewed the **San Antonio Sheet of the Geologic Atlas of Texas** in an effort to determine the geologic setting of the project site and surrounding areas. The Geologic Atlas of Texas was developed by the Bureau of Economic Geology at The University of Texas using aerial photography, data from various oil and gas exploration companies, and very limited ground reconnaissance. Our review indicates that the project site is located within the **Glen Rose Formation** (K_{gr}). The Glen Rose Formation generally consists of light gray to yellowish gray limestone, dolomite and marl in recessive beds forming stairstep topography and is approximately 900 feet thick.

2.5 SUBSURFACE CONDITIONS

The results of the field and laboratory investigation have been used to develop a generalized subsurface profile at the project site. The following subsurface descriptions highlight the major subsurface stratification features and material characteristics.



TABLE 2.5: GENERALIZED SUBSURFACE PROFILE TABLE

Top (ft)	Bot. (ft)	Soil Type	ω (%)	LL (%)	PI	-200 Sieve (%)	N
0	0.5 – 2.5	Clayey Gravel with Sand	11 – 35	51	29	28	5 – 49
0 – 2.5	20	Limestone	4 – 22	--	--	--	50/3" – 50/0"

Note:

1. ω = Moisture Content (%)
2. LL = Liquid limit (%)
3. PI = Plasticity Index
4. -#200 Sieve = % Passing the #200 Sieve
5. N = Standard Penetration Test blow count (blows/foot)

The material properties for the limestone were obtained by laboratory testing, however, these tests were performed on grab samples from cuttings or Standard Penetration Test samples where the rock-like materials had been broken down to its finer constituent materials. Therefore, the reported properties reflect the nature of broken-down rock-like material, which was considered in the analysis and recommendations provided in this report.

The boring logs included in the Appendix should be reviewed for specific information at the boring locations. The boring logs include soil descriptions, stratifications, locations of the samples, and field and laboratory test data. The descriptions provided on the logs only represent the conditions at the specific boring location. The stratifications represent the approximate boundaries between subsurface materials. The actual transitions between strata may be more gradual and less distinct. Variations will occur and should be expected across the site.

2.5.1 GROUNDWATER INFORMATION

Water level measurements were performed during drilling and after completion of drilling. Specific information concerning groundwater is noted on each boring log presented in the Appendix of this report. Groundwater **was not** encountered during the field investigation of this site.

Groundwater levels fluctuate seasonally as a function of rainfall, proximity to creeks, rivers and lakes, the infiltration rate of the soil, seasonal and climatic variations and land usage. In relatively pervious soils, such as sandy soils, the indicated depths are a relatively reliable indicator of groundwater levels. In relatively impervious soils, water levels observed in the borings may not provide a reliable indication of groundwater elevations, even after several days. If a detailed water level evaluation is required, observation wells or piezometers can be installed at the site to monitor water levels.

The groundwater levels presented in this report were measured at the time of PSI field activities. The contractor should be prepared to control groundwater, if encountered during construction activities.



3.0 GEOTECHNICAL EVALUATION AND RECOMMENDATIONS

3.1 DETENTION POND

PSI understand that a detention pond is planned to be constructed at the site. The table below provides design considerations based upon the information gathered from the soil borings and limited laboratory testing.

TABLE 3.1: GENERALIZED SUBSURFACE PROFILE TABLE

Top (ft)	Bot. (ft)	Soil Texture	$K_{20^\circ\text{C}}^1$ (cm/sec)	Infiltration Rate ¹ (in/hr)	Max Slope
0	0.5	Clayey Sand with Gravel	$1 \times 10^{-7} - 1 \times 10^{-5}$	0.2	1H:1V
0.5	20	Limestone	1×10^{-7}	0.2	½:1 to Vertical

Note:

1. Estimated based on typical values

The USDA NRCC online Web Soil Survey indicates the area of the proposed detention pond is mapped as Brackett Rock Outcrop (Map Unit Symbol BtG) and Comfort Rock Outcrop (CrD) for Comal County (TX604).



4.0 PAVEMENT DESIGN RECOMMENDATIONS

4.1 PAVEMENT DESIGN PARAMETERS

PSI understands that flexible pavements will be considered for this project. Therefore, pavement design recommendations based on the criteria presented in the *Comal County Subdivision Regulations* (adopted September 3, 2020) and a traffic loading of 100,000 18-kip Equivalent Single Axle Loads (ESALs) for flexible pavement was evaluated for a street classification of Secondary streets. A traffic load of 2,000,000 18-kip ESALs for flexible pavement was evaluated for a street classification of Collector streets. A traffic load of 3,000,000 18-kip ESALs for flexible pavement was evaluated for a street classification of Arterial streets. PSI utilized the "AASHTO Guide for Design of Pavement Structures" published by the American Association of State Highway and Transportation Officials to evaluate the pavement thickness recommendations in this report. This method of design considers pavement performance, traffic, roadbed soil, pavement materials, environment, drainage, and reliability. Each of these items is incorporated into the design methodology. PSI is available to provide laboratory testing and engineering evaluation to refine the site-specific design parameters and sections, upon request.

Based on the results of the laboratory testing, PSI has provided recommended pavement sections for pavements constructed on an improved subgrade. Details regarding the basis for this design are presented in the table below.

TABLE 4.1: PAVEMENT DESIGN PARAMETERS AND ASSUMPTIONS

Comal County Secondary Streets	
Reliability, percent	70
Initial Serviceability Index, Flexible Pavement	4.2
Terminal Serviceability Index	2.0
Design Traffic Loading, Flexible Pavement, without bus	300,000 equivalent single axle loads (ESALs)
Standard Deviation, Flexible Pavement	0.45
Estimated Subgrade California Bearing Ratio (CBR)	60
Subgrade Modulus of Subgrade Reaction, k in pci	400
Comal County Collector Streets	
Reliability, percent	90
Initial Serviceability Index, Flexible Pavement	4.2
Terminal Serviceability Index	2.0
Design Traffic Loading, Flexible Pavement	1,000,000 equivalent single axle loads (ESALs)
Standard Deviation, Flexible Pavement	0.45
Estimated Subgrade California Bearing Ratio (CBR)	60
Subgrade Modulus of Subgrade Reaction, k in pci	400
Comal County Primary and Secondary Arterials	
Reliability, percent	95



Initial Serviceability Index, Flexible Pavement	4.2
Terminal Serviceability Index	2.0
Design Traffic Loading, Flexible Pavement	2,000,000 equivalent single axle loads (ESALs)
Standard Deviation, Flexible Pavement	0.45
Estimated Subgrade California Bearing Ratio (CBR)	60
Subgrade Modulus of Subgrade Reaction, k in pci	400

Asphaltic concrete pavements founded on top of expansive soils will be subjected to PVM soil movements estimated and presented in this report. These potential soil movements are typically activated to some degree during the life of the pavement. Consequently, pavements can be expected to crack and require periodic maintenance to reduce damage to the pavement structure.

During the paving life, maintenance to seal surface cracks within asphalt paving should be undertaken to achieve the desired paving life. Perimeter drainage should be controlled to prevent or retard influx of surface water from areas surrounding the paving. Water penetration leads to paving degradation. Water penetration into base or subgrade materials, sometimes due to irrigation or surface water infiltration leads to pre-mature paving degradation. Curbs should be used in conjunction with asphalt paving to reduce potential for infiltration of moisture into the base course. Curbs should extend the full depth of the base course and should extend at least 3 inches into the underlying clayey subgrade. The base layer should be tied into the area inlets to drain water that may collect in the base.

Material specifications, construction considerations, and section requirements are presented in following sections.

The presented recommended pavement sections are based on the field and laboratory test results for the project, local pavement design practice, design assumptions presented herein and previous experience with similar projects. The project Civil Engineer should verify that the ESAL and other design values are appropriate for the expected traffic and design life of the project. PSI should be notified in writing if the assumptions or design parameters are incorrect or require modification.

4.2 PAVEMENT SECTION RECOMMENDATIONS

PSI anticipated that the roadways and parking areas will be used primarily by passenger vehicles and delivery vehicles. PSI is providing parking and drive area sections based on experience with similar facilities constructed on similar soil conditions for the design traffic loading anticipated.

4.2.1 FLEXIBLE PAVEMENT

Recommendations for flexible asphaltic concrete pavement for roadways and parking areas are provided below.



TABLE 4.2: FLEXIBLE PAVEMENT SECTION OPTIONS

Material	Thicknesses		
	Traffic Type	Local	Collector Arterial
Hot Mix Asphaltic Concrete	2.5"	2.5"	3"
Import Flexible Base	7"	8"	8"
Compacted Subgrade ¹	NA		

1. Limestone subgrade does not require moisture conditioning or compaction.

4.2.2 GENERAL PAVEMENT DESIGN AND CONSTRUCTION RECOMMENDATIONS

TABLE 4.3: PAVEMENT DESIGN AND CONSTRUCTION RECOMMENDATIONS

Minimum Undercut Depth	6 inches or as needed to remove roots
Reuse Excavated Soils	Must be free of roots and debris and meet material requirements of intended use
Exposed Subgrade Treatment	Proof-roll with rubber-tired vehicle weighing at least 20 tons. A representative of the Geotechnical Engineer should be present during proof-roll.
Proof-Rolled Pumping and Rutting Areas	Excavate to firmer materials and replace with compacted general or select fill under direction of a representative of the Geotechnical Engineer
General Fill	Materials free of roots, debris, and other deleterious materials with a maximum rock size of 4 inches with a CBR greater than 3
Minimum General Fill Thickness	As required to achieve grade
Maximum General Fill Loose Lift Thickness	9 Inches
Flexible Base	TxDOT Item 247, Type A, Grade 1-2
Maximum Flexible Base Loose Lift Thickness	9 Inches
Hot Mix Asphaltic Concrete	TxDOT Item 340, Type D

TABLE 4.4: COMPACTION AND TESTING RECOMMENDATIONS FOR PAVEMENT AREAS

Location	Material	Density Test Method	Soil Type	Percent Compaction	Optimum Moisture Content	Testing Frequency
Pavement Areas	Subgrade, General Fill Soil, Low PI Material	Tex-114-E	PI ≥ 25	94% to 98%	0 to +4%	1 per 10,000 SF; min. 3 tests
			PI < 25	≥ 95%	0 to +4%	
	Flexible Base Material	TEX-113-E	COSA Item 200	≥ 95%	±3%	1 per 5,000 SF; min. 3 per lift

Notes: If limestone is encountered at the subgrade elevation, only a proof-roll is required.



5.0 CONSTRUCTION CONSIDERATIONS

Geotechnical Engineer Involvement at the Time of Construction – Foundation pad preparation recommendations on expansive clay sites in this area depend on the soil moisture conditions that exist due to the prevailing climate at the time of construction as well as the expansive properties of the clay.

It is recommended that the foundation pad recommendations presented in this report be confirmed immediately prior to construction by the Geotechnical-Engineer-of Record (GER). Wetter climate conditions near the time of construction can lead to a significant reduction in pad preparation requirements which can often be a substantial percentage of site development cost.

Having a Geotechnical Engineer retained to review the earthwork recommendations in the Construction Documents and be an active participant in team meetings near the time of construction can often result in project cost savings. Therefore, PSI recommends that an AASHTO accredited 3rd party laboratory with qualified professional engineers who specialize in geotechnical engineering be retained to provide observation and testing of construction activities involved in the foundations, earthwork, pavements and related activities of this project. As the GER, PSI's services can be retained as the 3rd party laboratory. PSI's participation would be advantageous to the project flow and value engineering during construction since we are most familiar with the existing soil conditions at the site.

The geotechnical engineer often does not have available all design information at the time of writing the original report since the report is done very early in the design process. The GER can be of great benefit immediately prior to construction since definitive information regarding the location of the building, surrounding flatwork, pavements, planned landscaping, and drainage features is available at that time. The GER can then write Supplement letters to the original geotechnical report often resulting in less risk and significant project cost savings.

PSI cannot accept responsibility for conditions which deviate from those described in this report, nor for the performance of the foundations or pavements if not engaged to also provide construction observation and materials testing for this project. The PSI geotechnical engineer of record should also be engaged by the Design Team during construction, even if periodic on-call testing is contracted with PSI Construction Services.



5.1 INITIAL SITE PREPARATION CONSIDERATIONS

5.1.1 SUBGRADE PREPARATION FOR SITE WORK OUTSIDE BUILDING PAD AND PAVEMENT AREAS

Grade adjustments outside of the foundation pad and pavement areas can be made using select or general fill materials. The clean excavated onsite soils may also be reused in areas not sensitive to movement.

TABLE 5.1: SUBGRADE PREPARATION FOR NON-STRUCTURAL - GENERAL FILL

Minimum Undercut Depth	6 inches or as needed to remove roots, organic and/or deleterious materials
Exposed Subgrade Treatment	Proof-roll subgrade with rubber-tired 20-ton (loaded) construction equipment Alternate Equipment can be used with Geotechnical Engineer Approval
Proof-Rolled Pumping and Rutting Areas	Excavate to firmer materials and replace with compacted general or select fill under direction of a representative of the Geotechnical Engineer
General Fill Type	Any clean material free of roots, debris and other deleterious material with a maximum particle size of 4 inches
Maximum General Fill Loose Lift Thickness	8 inches

TABLE 5.2: FILL COMPACTION RECOMMENDATIONS OUTSIDE OF BUILDING AND PAVEMENT AREAS

Location	Material	Test Method for Density Determination	Plasticity Index	Percent Compaction	Optimum Moisture Content	Testing Frequency
Outside of Structure / Pavement Areas	General Fill	ASTM D698	PI \geq 25	94% to 98%	0 to +4%	1 per 10,000 SF; min. 3 per lift
			PI < 25	\geq 95%	0 to +4%	

5.1.2 EXISTING SITE CONDITIONS

The following table outlines construction considerations in consideration of demolition of existing paving, procedures for abandoning old utility lines and removing trees.

TABLE 5.3: CONSIDERATIONS FOR DEMOLITION, ABANDONING UTILITIES AND TREE REMOVAL

Existing Pavement	
Former paving located within footing of proposed structures	Remove concrete and/or HMA surface course and base entirely or review impact on case by case basis
Former paving located within footprint of proposed new paving	Remove concrete and/or HMA surface course and evaluate if base can be reused
Abandoned Utilities	
Utilities of former structures located within new footprint of proposed structure	Remove pipe, bedding and backfill and then replace with select fill placed using controlled compaction
Utilities of former structures located outside of footprint of proposed structure	Abandon in place using a grout plug
Tree Removal	



Trees located within proposed building footprint; roadways, parking, and sidewalk areas; and within 15 feet of building area	Remove root system for full vertical and lateral extent and extend removal for at least 3 feet beyond presence of root fragments and replace void with compacted general fill or flowable fill
--	--

5.2 MOISTURE SENSITIVE SOILS/WEATHER RELATED CONCERNS

Soils are sensitive to disturbances caused by construction traffic and changes in moisture content. During wet weather periods, increases in the moisture content of the soil can cause significant reduction in the soil strength and support capabilities. In addition, soils which become wet may be slow to dry and thus significantly retard the progress of grading and compaction activities. It will, therefore, be advantageous to perform earthwork, foundation, and construction activities during dry weather. A relatively all-weather compacted crushed limestone cap having a thickness of at least 6 inches should be provided as a working surface.

5.3 EXCAVATION OBSERVATIONS

Excavations should be observed by a representative of PSI prior to continuing construction activities in those areas. PSI needs to assess the encountered materials and confirm that site conditions are consistent with those discussed in this report. This is especially important to identify the condition and acceptability of the exposed subgrades under foundations and other structures that are sensitive to movement. Soft or loose soil zones encountered at the bottom of the excavations should be removed to the level of competent soils as directed by the Geotechnical Engineer or their representative. Cavities formed as a result of excavation of soft or loose soil zones should be backfilled with compacted select fill or lean concrete.

After opening, excavations should be observed, and concrete should be placed as quickly as possible to avoid exposure to wetting and drying. Surface run-off water should be drained away from the excavations and not be allowed to pond. Excavations left open for more than 48 hours should be protected to reduce evaporation or entry of moisture.

5.4 DRAINAGE CONSIDERATIONS

Water should not be allowed to collect in or adjacent to foundation excavations, on foundation surfaces, or on prepared subgrades within the construction area during or after construction. Proper drainage around grade-supported sidewalks and flatwork is important to reduce potential movements. Excavated areas should be sloped toward one corner to facilitate removal of collected rainwater, groundwater, or surface runoff. Providing rapid, positive drainage away from the building reduces moisture variations within the underlying soils and will aid in reducing the magnitude of potential movements.

5.5 EXCAVATIONS AND TRENCHES

Excavation equipment capabilities and field conditions may vary. Geologic processes are erratic and large variations can occur in small vertical and/or lateral distances. Details regarding “means and methods” to accomplish the work (such as excavation equipment and technique selection) are the sole responsibility of the project contractor. The comments contained in this report are based on small diameter borehole observations. The performance of large excavations may differ as a result of the differences in excavation sizes.



The limestone is hard. Excavations penetrating the limestone and limestone removal as part of site grading will likely require high-powered, heavy-duty rock excavation equipment.

The Occupational Safety and Health Administration (OSHA) Safety and Health Standards (29 CFR Part 1926, Revised October 1989), require that excavations be constructed in accordance with the current OSHA guidelines. Furthermore, the State of Texas requires that detailed plans and specifications meeting OSHA standards be prepared for trench and excavation retention systems used during construction. PSI understands that these regulations are being strictly enforced, and if they are not closely followed, the owner and the contractor could be liable for substantial penalties.

The contractor is solely responsible for designing and constructing stable, temporary excavations and should shore, slope, or bench the sides of the excavations as required to maintain stability of both the excavation sides and bottom. The contractor's "responsible person", as defined in 29 CFR Part 1926, should evaluate the soil exposed in the excavations as part of the contractor's safety procedures. In no case should slope height, slope inclination, or excavation depth, including utility trench excavation depth, exceed those specified in local, State, and Federal safety regulations.

PSI is providing this information as a service to the client. PSI does not assume responsibility for construction site safety or the contractor's or other parties' compliance with local, State, and Federal safety or other regulations. A trench safety plan was beyond the scope of our services for this project.



6.0 REPORT LIMITATIONS

The recommendations submitted in this report are based on the available subsurface information obtained by PSI and design details furnished by the client for the proposed project. If there are revisions to the plans for this project, or if deviations from the subsurface conditions noted in this report are encountered during construction, PSI should be notified immediately to determine if changes in the foundation recommendations are required. If PSI is not notified of such changes, PSI will not be responsible for the impact of those changes on the project.

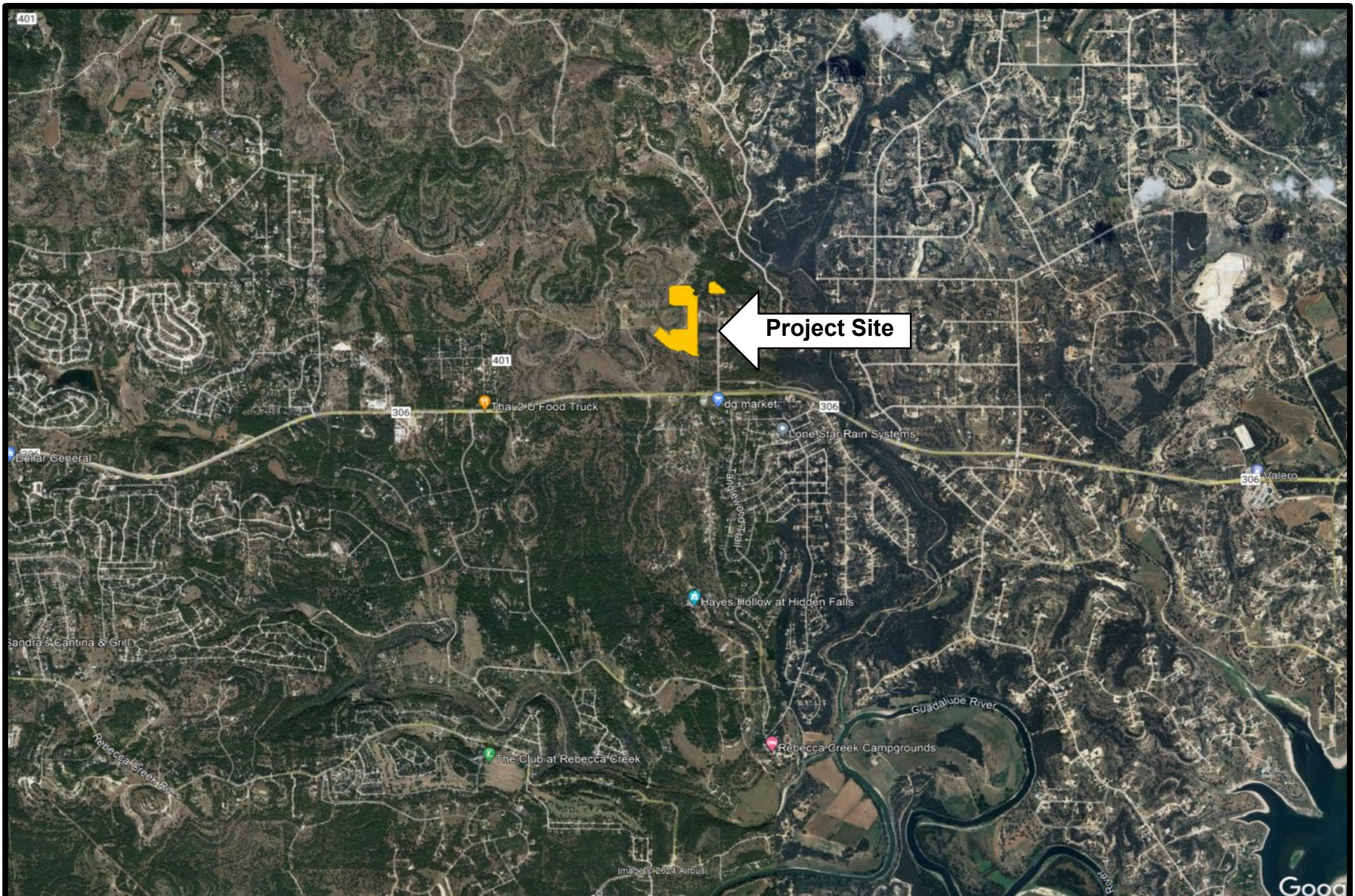
The Geotechnical Engineer warrants that the findings, recommendations, specifications, or professional advice contained herein have been made in accordance with generally accepted professional Geotechnical Engineering practices in the local area. No other warranties are implied or expressed. This report may not be copied without the expressed written permission of PSI.

After the plans and specifications are more complete, the Geotechnical Engineer should be retained and provided the opportunity to review the final design plans and specifications to check that the engineering recommendations have been properly incorporated in the design documents. At this time, it may be necessary to submit supplementary recommendations. If PSI is not retained to perform these functions, PSI will not be responsible for the impact of those conditions on the project.

This report has been prepared for the exclusive use of Lennar for specific application to the proposed Canyon Ranch Unit 4 - Streets to be constructed at FM 306 in Spring Branch, Texas.



APPENDIX



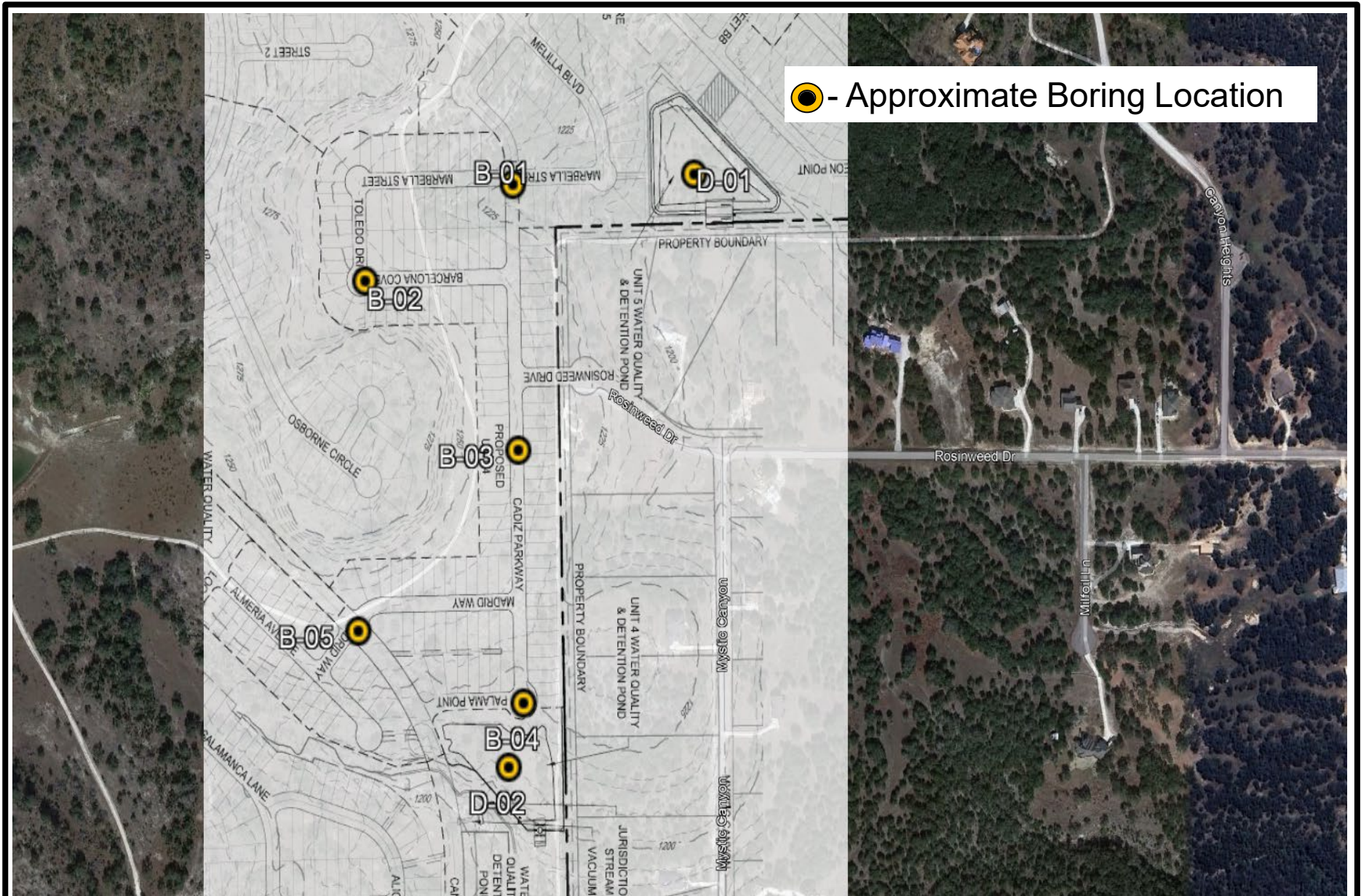
3 Burwood Lane, San Antonio, Texas
(210) 342-9377 FAX (210) 342-9401

Site Vicinity Map

Canyon Ranch Unit 4
FM 306
San Antonio, Texas
PSI Project No.: 0312-3287

NOT TO SCALE





3 Burwood Lane, San Antonio, Texas
(210) 342-9377 FAX (210) 342-9401

Boring Location Plan

Canyon Ranch Unit 4
FM 306
San Antonio, Texas
PSI Project No.: 0312-3287

NOT TO SCALE



Boring Logs

Canyon Ranch Unit 4 - Streets
FM 306, Spring Branch, Texas
Project No. 0312-3287

BORING B-01

LOCATION: See Boring Location Plan

DEPTH, FT.	SYMBOL	SAMPLES	WATER	SOIL DESCRIPTION	MOISTURE CONTENT	% RETAINED #4	% PASSING #200	SPT (N) & TCP (T) VALUES	% REC	%RQD	LIQUID LIMIT	PLASTIC LIMIT	PLASTICITY INDEX	<div> <div>○ HAND PEN (TSF)</div> <div>● UNC CMP (TSF)</div> </div> <div> <div>2.0</div> <div>4.0</div> <div>6.0</div> </div>			UNCONF. COMP. (TSF)	UNIT DRY WT. (LB/CU FT)
														<div> <div>PL</div> <div>20</div> </div>	<div> <div>WC</div> <div>40</div> </div>	<div> <div>LL</div> <div>60</div> </div>		
				Elevation:														
				CLAYEY GRAVEL (GC) with SAND, brown, loose	20			50/1"										
				LIMESTONE, tan, hard														
					11			50/0"										
5					4			50/0"										
					8			50/0"										
					8			50/0"										
10																		
					8			50/0"										
15																		
				Boring terminated at approximately 15 feet.														
20																		
25																		

COMPLETION DEPTH: 15.0 Feet

DATE: 7/31/24



DEPTH TO GROUND WATER

SEEPAGE (ft.): NONE ENCOUNTERED

END OF DRILLING (ft.): NONE ENCOUNTERED

DELAYED WATER LEVEL (FT): NONE ENCOUNTERED

Canyon Ranch Unit 4 - Streets
 FM 306, Spring Branch, Texas
 Project No. 0312-3287

BORING B-02

LOCATION: See Boring Location Plan

DEPTH, FT.	SYMBOL	SAMPLES	WATER	SOIL DESCRIPTION	MOISTURE CONTENT	% RETAINED #4	% PASSING #200	SPT (N) & TCP (T) VALUES	% REC	%RQD	LIQUID LIMIT	PLASTIC LIMIT	PLASTICITY INDEX	○ HAND PEN (TSF) ● UNC CMP (TSF) 2.0 4.0 6.0 PL WC LL 20 40 60			UNCONF. COMP. (TSF)	UNIT DRY WT. (LB/CU FT)
				Elevation:														
				LIMESTONE, tan, hard	22			50/1"										
					13			50/0"										
5					6			50/0"										
					10			50/0"										
					13			50/0"										
10																		
					12			50/0"										
15				Boring terminated at approximately 15 feet.														
20																		
25																		

COMPLETION DEPTH: 15.0 Feet

DATE: 7/31/24



DEPTH TO GROUND WATER

SEEPAGE (ft.): NONE ENCOUNTERED

END OF DRILLING (ft.): NONE ENCOUNTERED

DELAYED WATER LEVEL (FT): NONE ENCOUNTERED

Canyon Ranch Unit 4 - Streets
FM 306, Spring Branch, Texas
Project No. 0312-3287

BORING B-03

LOCATION: See Boring Location Plan

DEPTH, FT.	SYMBOL	SAMPLES	WATER	SOIL DESCRIPTION	MOISTURE CONTENT	% RETAINED #4	% PASSING #200	SPT (N) & TCP (T) VALUES	% REC	%RQD	LIQUID LIMIT	PLASTIC LIMIT	PLASTICITY INDEX	<div> <div>○ HAND PEN (TSF)</div> <div>● UNC CMP (TSF)</div> </div> <div> <div>2.0</div> <div>4.0</div> <div>6.0</div> </div>			UNCONF. COMP. (TSF)	UNIT DRY WT. (LB/CU FT)
														<div> <div>PL</div> <div>20</div> </div>	<div> <div>WC</div> <div>40</div> </div>	<div> <div>LL</div> <div>60</div> </div>		
				Elevation:														
				CLAYEY GRAVEL (GC) with SAND, brown, dense	11	52	28	49			51	22	29					
				LIMESTONE, tan, hard	11			50/0"										
5					9			50/0"										
					15			50/0"										
10					14			50/0"										
					14			50/0"										
15				Boring terminated at approximately 15 feet.														
20																		
25																		

COMPLETION DEPTH: 15.0 Feet

DATE: 7/31/24



DEPTH TO GROUND WATER

SEEPAGE (ft.): NONE ENCOUNTERED

END OF DRILLING (ft.): NONE ENCOUNTERED

DELAYED WATER LEVEL (FT): NONE ENCOUNTERED

Canyon Ranch Unit 4 - Streets
FM 306, Spring Branch, Texas
Project No. 0312-3287

BORING B-04

LOCATION: See Boring Location Plan

DEPTH, FT.	SYMBOL	SAMPLES	WATER	SOIL DESCRIPTION	MOISTURE CONTENT	% RETAINED #4	% PASSING #200	SPT (N) & TCP (T) VALUES	% REC	%RQD	LIQUID LIMIT	PLASTIC LIMIT	PLASTICITY INDEX	<div> <div>○ HAND PEN (TSF)</div> <div>● UNC CMP (TSF)</div> </div> <div> <div>2.0</div> <div>4.0</div> <div>6.0</div> </div>			UNCONF. COMP. (TSF)	UNIT DRY WT. (LB/CU FT)
														<div> <div>PL</div> <div>20</div> </div>	<div> <div>WC</div> <div>40</div> </div>	<div> <div>LL</div> <div>60</div> </div>		
				Elevation:														
				CLAYEY GRAVEL (GC) with SAND, brown, loose	35			50/1"										
				LIMESTONE, tan, hard														
					13			50/0"										
5					14			50/0"										
					11			50/0"										
					9			50/0"										
10																		
					11			50/0"										
15																		
				Boring terminated at approximately 15 feet.														
20																		
25																		

COMPLETION DEPTH: 15.0 Feet

DATE: 7/31/24



DEPTH TO GROUND WATER

SEEPAGE (ft.): NONE ENCOUNTERED

END OF DRILLING (ft.): NONE ENCOUNTERED

DELAYED WATER LEVEL (FT): NONE ENCOUNTERED

Canyon Ranch Unit 4 - Streets
FM 306, Spring Branch, Texas
Project No. 0312-3287

BORING B-05

LOCATION: See Boring Location Plan

DEPTH, FT.	SYMBOL	SAMPLES	WATER	SOIL DESCRIPTION	MOISTURE CONTENT	% RETAINED #4	% PASSING #200	SPT (N) & TCP (T) VALUES	% REC	%RQD	LIQUID LIMIT	PLASTIC LIMIT	PLASTICITY INDEX	<div> <div>○ HAND PEN (TSF)</div> <div>● UNC CMP (TSF)</div> </div> <div> <div>2.0</div> <div>4.0</div> <div>6.0</div> </div>			UNCONF. COMP. (TSF)	UNIT DRY WT. (LB/CU FT)
														<div> <div>PL</div> <div>20</div> </div>	<div> <div>WC</div> <div>40</div> </div>	<div> <div>LL</div> <div>60</div> </div>		
				Elevation:														
				CLAYEY GRAVEL (GC) with SAND, brown, loose	10			50/3"										
				LIMESTONE, tan, hard														
					10			50/0"										
5					9			50/0"										
					9			50/0"										
					13			50/0"										
10					12			50/0"										
15				Boring terminated at approximately 15 feet.														
20																		
25																		

COMPLETION DEPTH: 15.0 Feet

DATE: 7/31/24



DEPTH TO GROUND WATER

SEEPAGE (ft.): NONE ENCOUNTERED

END OF DRILLING (ft.): NONE ENCOUNTERED

DELAYED WATER LEVEL (FT): NONE ENCOUNTERED

Canyon Ranch Unit 4 - Streets
FM 306, Spring Branch, Texas
Project No. 0312-3287

BORING D-01

LOCATION: See Boring Location Plan

DEPTH, FT.	SYMBOL	SAMPLES	WATER	SOIL DESCRIPTION	MOISTURE CONTENT	% RETAINED #4	% PASSING #200	SPT (N) & TCP (T) VALUES	% REC	%RQD	LIQUID LIMIT	PLASTIC LIMIT	PLASTICITY INDEX	<div> <div>○ HAND PEN (TSF)</div> <div>● UNC CMP (TSF)</div> </div>			UNCONF. COMP. (TSF)	UNIT DRY WT. (LB/CU FT)
														2.0	4.0	6.0		
				Elevation:										PL 20	WC 40	LL 60		
				CLAYEY GRAVEL (GC) with SAND, brown, loose	19			50/0"										
				LIMESTONE, tan, hard														
					9			50/0"										
5					8			50/0"										
					7			50/0"										
					7			50/0"										
10																		
					7			50/0"										
15																		
					10			50/0"										
20				Boring terminated at approximately 20 feet.														
25																		

COMPLETION DEPTH: 20.0 Feet

DATE: 7/31/24



DEPTH TO GROUND WATER

SEEPAGE (ft.): NONE ENCOUNTERED

END OF DRILLING (ft.): NONE ENCOUNTERED

DELAYED WATER LEVEL (FT): NONE ENCOUNTERED

BORING D-02

[illegible]

DELAIDED WATER LEVEL (FT): NONE ENCOUNTERED

KEY TO TERMS AND SYMBOLS USED ON LOGS

ROCK CLASSIFICATION

RECOVERY

DESCRIPTION OF RECOVERY	% CORE RECOVERY
Incompetent	< 40
Competent	40 TO 70
Fairly Continuous	70 TO 90
Continuous	90 TO 100

ROCK QUALITY DESIGNATION (RQD)

DESCRIPTION OF ROCK QUALITY	RQD
Very Poor (VPo)	0 TO 25
Poor (Po)	25 TO 50
Fair (F)	50 TO 75
Good (Gd)	75 TO 90
Excellent (ExInt)	90 TO 100

CONSISTENCY OF COHESIVE SOILS

CONSISTENCY	N-VALUE (Blows/Foot)	SHEAR STRENGTH (tsf)	HAND PEN VALUE (tsf)
Very Soft	0 TO 2	0 TO 0.125	0 TO 0.25
Soft	2 TO 4	0.125 TO 0.25	0.25 TO 0.5
Firm	4 TO 8	0.25 TO 0.5	0.5 TO 1.0
Stiff	8 TO 15	0.5 TO 1.0	1.0 TO 2.0
Very Stiff	15 TO 30	1.0 TO 2.0	2.0 TO 4.0
Hard	>30	>2.0 OR 2.0+	>4.0 OR 4.0+

SOIL DENSITY OR CONSISTENCY

DENSITY (GRANULAR)	CONSISTENCY (COHESIVE)	THD (BLOWS/FT)	FIELD IDENTIFICATION
Very Loose (VLo)	Very Soft (VSo)	0 TO 8	Core (height twice diameter) sags under own weight
Loose (Lo)	Soft (So)	8 TO 20	Core can be pinched or imprinted easily with finger
Slightly Compact (SICmpt)	Stiff (St)	20 TO 40	Core can be imprinted with considerable pressure
Compact (Cmpt)	Very Stiff (VSt)	40 TO 80	Core can only be imprinted slightly with fingers
Dense (De)	Hard (H)	80 TO 5"/100	Core cannot be imprinted with fingers but can be penetrated with pencil
Very Dense (VDe)	Very Hard (VH)	5"/100 to 0"/100	Core cannot be penetrated with pencil

DEGREE OF PLASTICITY OF COHESIVE SOILS

DEGREE OF PLASTICITY	PLASTICITY INDEX (PI)	SWELL POTENTIAL
None or Slight	0 to 4	None
Low	4 to 20	Low
Medium	20 to 30	Medium
High	30 to 40	High
Very High	>40	Very High

BEDROCK HARDNESS

MORHS' SCALE	CHARACTERISTICS	EXAMPLES	APPROXIMATE THD PEN TEST	
5.5 to 10	Rock will scratch knife	Sandstone, Chert, Schist, Granite, Gneiss, some Limestone	Very Hard (VH)	0" to 2"/100
3 to 5.5	Rock can be scratched with knife blade	Siltstone, Shale, Iron Deposits, most Limestone	Hard (H)	1" to 5"/100
1 to 3	Rock can be scratched with fingernail	Gypsum, Calcite, Evaporites, Chalk, some Shale	Soft (So)	4" to 6"/100

MOISTURE CONDITION OF COHESIVE SOILS

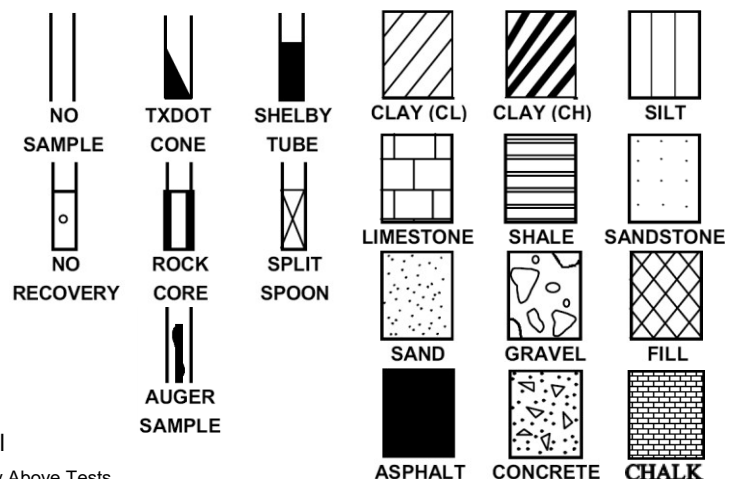
DESCRIPTION	CONDITION
Absence of moisture, dusty, dry to touch	DRY
Damp but no visible water	MOIST
Visible free water	WET

RELATIVE DENSITY FOR GRANULAR SOILS

APPARENT DENSITY	SPT (BLOWS/FT)	CALIFORNIA SAMPLER (BLOWS/FT)	MODIFIED CA. SAMPLER (BLOWS/FT)	RELATIVE DENSITY (%)
Very Loose	0 to 4	0 to 5	0 to 4	0 to 15
Loose	4 to 10	5 to 15	5 to 12	15 to 35
Medium Dense	10 to 30	15 to 40	12 to 35	35 to 65
Dense	30 to 50	40 to 70	35 to 60	65 to 85
Very Dense	>50	>70	>60	85 to 100

SAMPLER TYPES

SOIL TYPES



ABBREVIATIONS

PL – Plastic Limit
LL – Liquid Limit
WC – Percent Moisture
Q_P – Hand Penetrometer
Q_U – Unconfined Compression Test
UU – Unconsolidated Undrained Triaxial

Note: Plot Indicates Shear Strength as Obtained By Above Tests

▽ WATER SEEPAGE

▽ WATER LEVEL AT END OF DRILLING

U.S. STANDARD SIEVE SIZE(S)

CLASSIFICATION OF GRANULAR SOILS

6"	3"	3/4"	4	10	40	200		
BOULDERS	COBBLES	GRAVEL		SAND			SILT OR CLAY	CLAY
		COARSE	FINE	COARSE	MEDIUM	FINE		

A COMPLETE BUILDING SOLUTION

Everything you need from start to finish - Assurance, Testing, Inspection, and Certification



BCFSNA030-2P

TOTAL QUALITY. ASSURED.



The ever increasing challenges of designing, constructing, and maintaining a building can be difficult for any organization to navigate. From compliance to local and national codes, to ensuring an efficient design, to property management, Intertek-PSI's team of architects, engineers, scientists, and technicians understand firsthand the complexities of successfully constructing a commercial building. Our full suite of services give us unique insight into all phases of a project. Regardless of the project size or complexity, Intertek-PSI delivers engineering, consulting, and testing services to support site selection, design, construction, and property management.

As a leader in providing comprehensive solutions to industries around the globe, Intertek-PSI prides itself on bringing the expertise and services necessary for our clients to meet all of their needs across their entire operation. **Our Assurance, Testing, Inspection, and Certification (A.T.I.C.)** suite of services ensures that whatever your needs may be – assurance, testing, inspection, certification, or all of the above, that those needs will be met by Intertek-PSI.



800.WORLD.LAB



icenter@intertek.com



intertek.com/building



Site Selection

A diverse range of services from geotechnical investigations, due diligence, industrial hygiene, and site surveys, for your building environment.



Design Phase

Our expertise offers engineering, consulting, evaluation, and peer review to ensure a well designed project.



Building Product & Construction Materials

The most comprehensive suite of testing and certification services for construction materials and building products.



Construction Project

Vital services throughout the construction process including inspection, testing, monitoring, mock-ups, and consulting.



Building Maintenance

Evaluation of a building's condition through inspection and testing, investigation, and remediation plan development.



Decommissioning & Transfer

Services that expedite and ensure compliance of the transfer or decommissioning of property or building.

