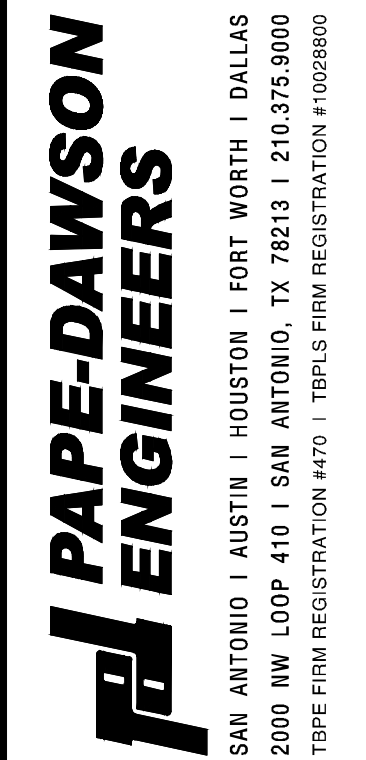
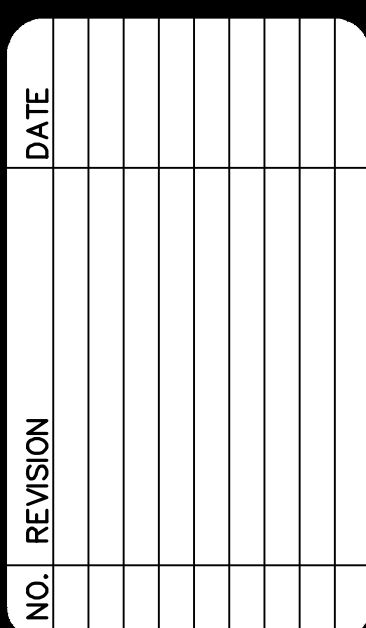




PLAT NO. 22-11800410
JOB NO. 12125-08
DATE AUGUST 2022
DESIGNER AJS
CHECKED BS DRAWN FP
SHEET C6.00



PROJECT LIMITS

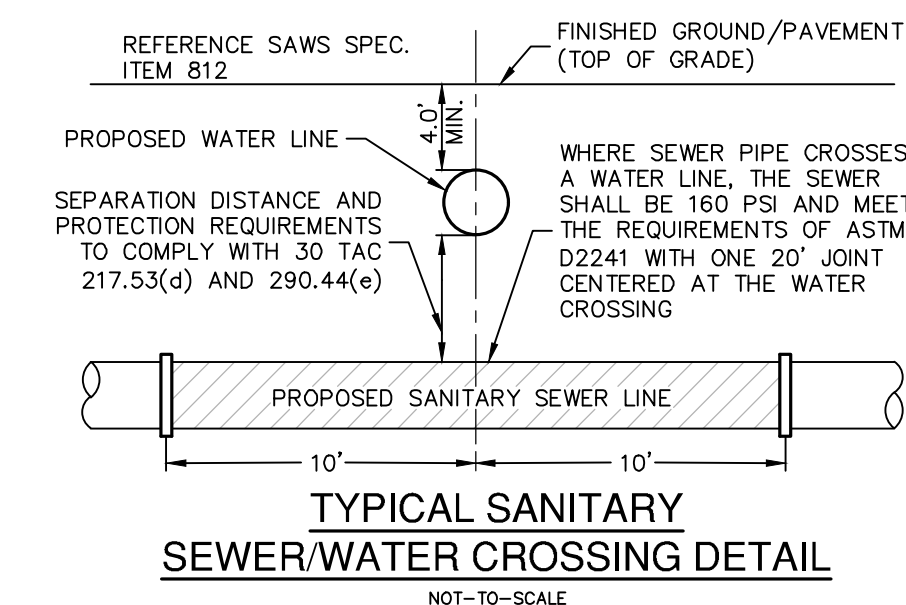
- Solid line: PROJECT LIMIT
- Dashed line: EXISTING WATER
- Dotted line: EXISTING SEWER
- Thick solid line: PROPOSED SEWER

PROPOSED WATER

- Thin solid line: PROPOSED WYE & LATERAL
- Single horizontal line: SINGLE WATER SERVICE
- Double horizontal line: DUAL WATER SERVICE

STREET LIGHTS

- Symbol with 'SL': GAS, ELECTRIC, TELEPHONE & CABLE TELEVISION EASEMENT
- Symbol with 'GETCTV': GETCTV



PRIVATE STREET DESIGNATION :

LOT 999, BLOCK 13, CB 4909, IS A PRIVATE STREET AND IS DESIGNATED AS AN UNDERGROUND AND AT-GRADE INFRASTRUCTURE AND SERVICE FACILITIES EASEMENT FOR GAS, ELECTRIC, STREET LIGHT, TELEPHONE CABLE TELEVISION, DRAINAGE, PEDESTRIAN, PUBLIC WATER, WASTEWATER, AND RECYCLED WATER MAINS.

OPEN SPACE NOTE :

LOT 901, BLOCK 31, CB 4909 ARE DESIGNATED AS PRIVATE OPEN SPACE, PERMEABLE AND AS A DRAINAGE, SEWER, WATER, GAS, ELECTRIC, TELEPHONE, CABLE TV AND PEDESTRIAN EASEMENT.

CONDUIT NOTES:

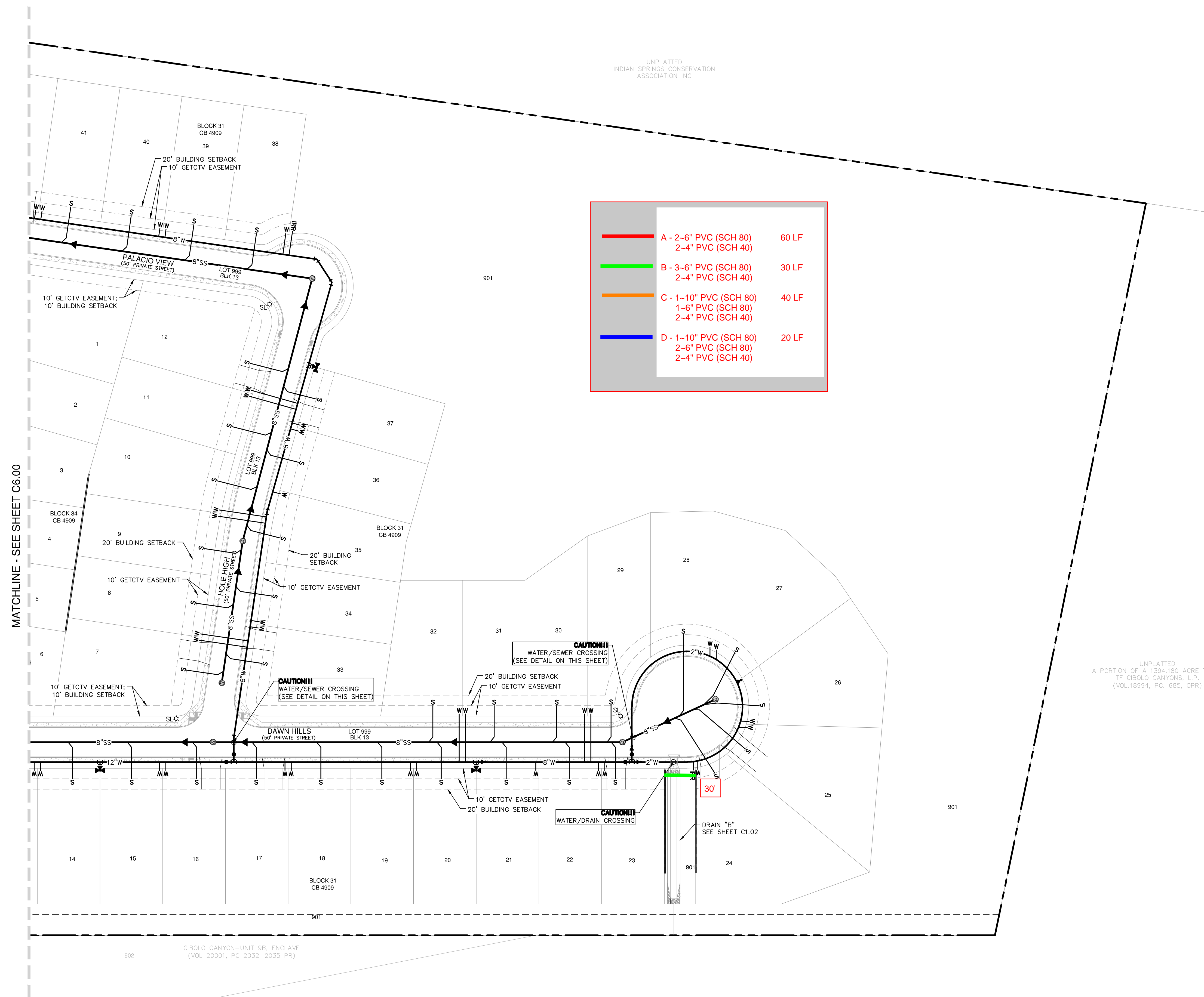
1. CONTRACTOR SHALL INSTALL PERMANENT MARKERS IN PROPOSED CURB WHERE CONDUITS CROSS THE ROADWAY (BOTH SIDES).
2. CONDUITS SHALL BE PVC WITH MINIMUM BURY OF 30 INCHES. SCHEDULE 80 TO BE USED FOR CPS CONDUITS, ALL OTHER CONDUITS ARE SCHEDULE 40.
3. ALL CONDUITS SHALL BE EXTENDED BEHIND CURBS OR PROPOSED SIDEWALKS A MINIMUM OF 3 FEET AND CAPPED FOR FUTURE USE.

TRENCH EXCAVATION SAFETY PROTECTION:

CONTRACTOR AND/OR CONTRACTOR'S INDEPENDENTLY RETAINED EMPLOYEE OR STRUCTURAL DESIGN/ GEOTECHNICAL/ SAFETY/EQUIPMENT CONSULTANT, IF ANY, SHALL REVIEW THESE PLANS AND ANY AVAILABLE GEOTECHNICAL INFORMATION AND THE ANTICIPATED INSTALLATION SITES WITHIN THE PROJECT WORK AREA IN ORDER TO IMPLEMENT CONTRACTOR'S TRENCH EXCAVATION SAFETY PROGRAM. CONTRACTOR SHALL FOLLOW THE PROCEDURES FOR THE PROJECT DESCRIBED IN THE CONTRACT DOCUMENTS. THE CONTRACTOR'S IMPLEMENTATION OF THESE SYSTEMS, PROGRAMS AND/OR PROCEDURES SHALL PROVIDE FOR ADEQUATE TRENCH EXCAVATION SAFETY PROTECTION TO COMPLY WITH ALL APPLICABLE STATE AND FEDERAL TRENCH EXCAVATIONS. SPECIFICALLY, CONTRACTOR AND/OR CONTRACTOR'S INDEPENDENTLY RETAINED EMPLOYEE AND/OR CONTRACTOR SHALL IMPLEMENT A TRENCH SAFETY PROGRAM IN ACCORDANCE WITH THE OSHA STANDARD FOR TRENCHING AND SHIELDING ACTIVITIES OF INDIVIDUALS WORKING IN AND AROUND TRENCH EXCAVATION.

CAUTION!!

CONTRACTOR SHALL BE REQUIRED TO LOCATE ALL PUBLIC OR PRIVATE UTILITIES INCLUDING BUT NOT LIMITING TO: WATER, SEWER, TELEPHONE AND FIBER OPTIC LINES, SITE LIGHTING ELECTRICAL, SECONDARY ELECTRIC, PRIMARY ELECTRICAL, DUCTBANKS, LANDSCAPE IRRIGATION FACILITIES, AND GAS LINES. ANY UTILITY CONFLICTS THAT ARISE SHOULD BE COMMUNICATED TO THE ENGINEER IMMEDIATELY AND PRIOR TO CONSTRUCTION. THE CONTRACTOR SHALL CONTACT 1-800-DIG-TESS A MINIMUM OF 48 HOURS PRIOR TO THE START OF CONSTRUCTION. ANY DAMAGE TO EXISTING UTILITIES SHALL BE THE SOLE RESPONSIBILITY OF THE CONTRACTOR AND THE REPAIR SHALL BE AT CONTRACTOR'S SOLE EXPENSE WHETHER THE UTILITY IS SHOWN ON THESE PLANS OR NOT.



MATCHLINE - SEE SHEET C6.00

Date: Dec 05, 2022, 5:53pm User ID: asalazar
File: P:\121\25\08\Design\Civil\OU 1212508.dwg

THIS DOCUMENT HAS BEEN PRODUCED FROM MATERIAL THAT WAS STORED AND/OR TRANSMITTED ELECTRONICALLY AND MAY HAVE BEEN INADVERTENTLY ALTERED. RELY ONLY ON FINAL HARD COPY MATERIALS BEARING THE CONSULTANT'S ORIGINAL SIGNATURE AND SEAL. AERIAL IMAGERY PROVIDED BY GOOGLE+ UNLESS OTHERWISE NOTED. Imagery © 2016 CAPCO Digital, GlobeTexas, Orthomobility Program, USDA Farm Service Agency.

CIBOLO CANYON - UNIT 9C, ENCLAVE
SAN ANTONIO, TEXAS
OVERALL UTILITY PLAN

PLAT NO. 22-11800410
JOB NO. 12125-08
DATE AUGUST 2022
DESIGNER AJS
CHECKED BS DRAWN FP
SHEET C6.01