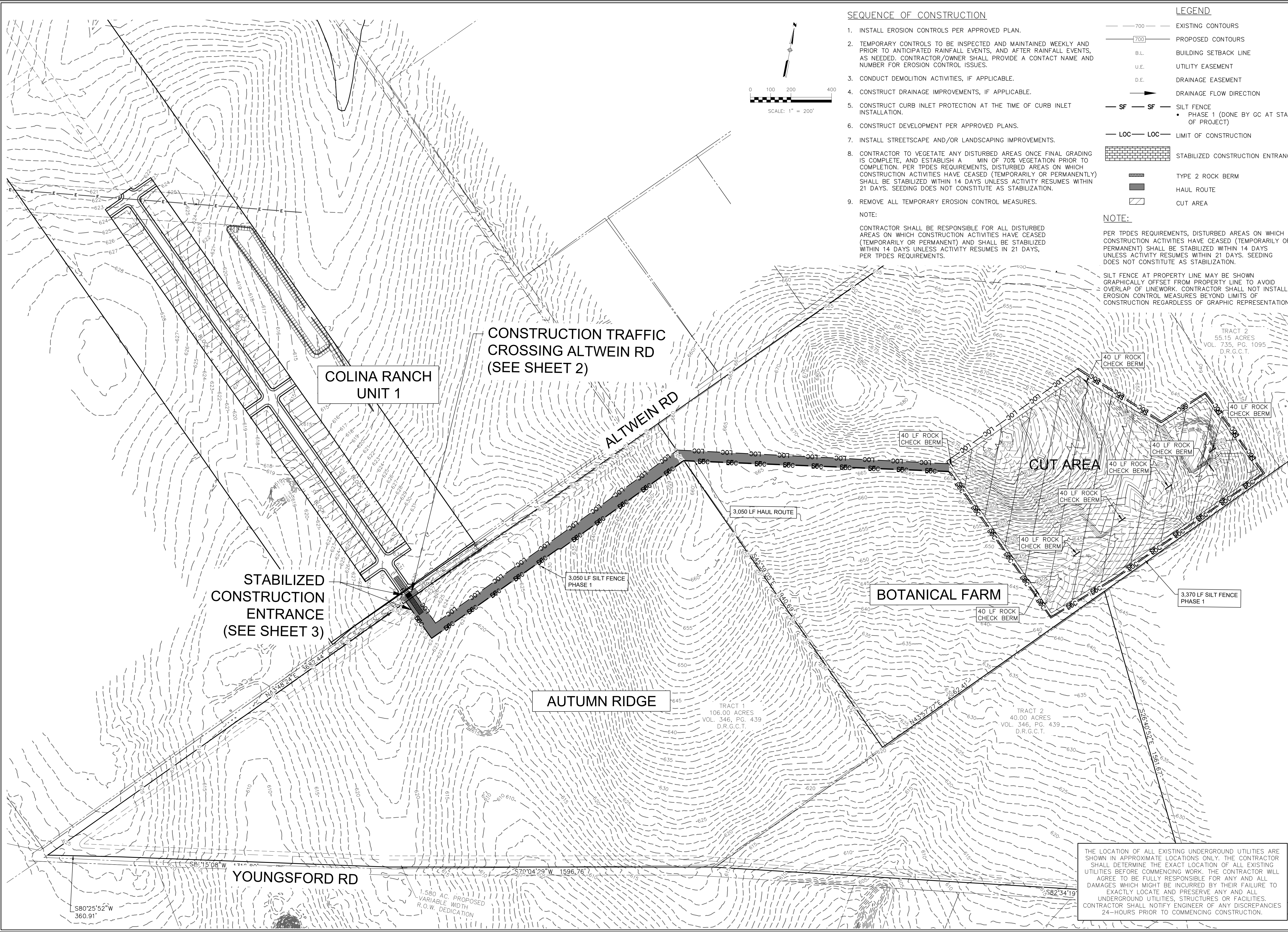


Drawing Name: N:_Projects\337 - Lerner\110 - Colina Ranch Phase 1 (123 lots)\03a\337\110_HAUL_ROUTE.dwg User: zaph Nov 12, 2023 - 4:32pm



290 S. CASTELL AVE., STE. 100
NEW BRAUNFELS, TX 78130
TBPELS FIRM F-10961
TBPELS FIRM 10153600

**HMT**
ENGINEERING & SURVEYING



STATE OF TEXAS
MATTHEW T. ABRAHAMSON
154638
PROFESSIONAL ENGINEER
Matthew T. Abrahamson

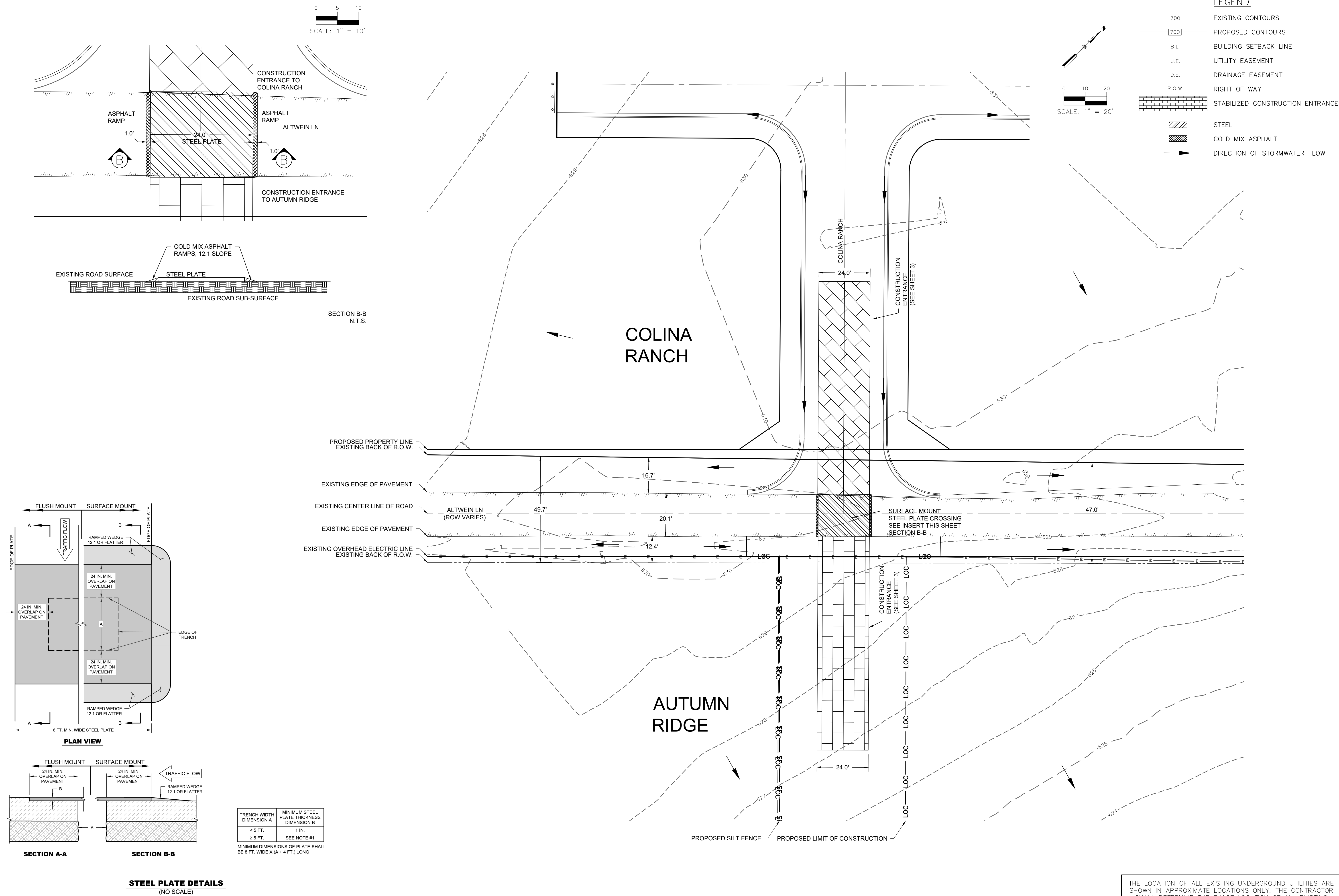
**HAUL ROUTE
EROSION CONTROL PLAN**
GUADALUPE COUNTY, TX

NO.	REVISION DESCRIPTION	REVISION DATE

DATE: NOVEMBER 2025
DRAWN BY: Z.J.L.
DESIGNED BY: MTA
REVIEWED BY: MTA
HMT PROJECT NO.: 337.110

SHEET
1 OF 3

Drawing Name: N:_Projects\337 - Lennet\110 - Colina Ranch Phase 1 (123 lots)\03a\337\110_HAUL ROUTE.dwg User: zaphl Nov 12, 2025 - 4:32pm



290 S. CASTELL AVE., STE. 100
NEW BRAUNFELS, TX 78130
TBPELS FIRM F-10961
TBPELS FIRM 10153600

HMT
ENGINEERING & SURVEYING

MATTHEW T. ABRAHAMSON
154638
PROFESSIONAL ENGINEER
Matthew T. Abrahamson

HAUL ROUTE
CONSTRUCTION CROSSING PLAN
GAUDALUPE COUNTY, TX

NO.	REVISION	DESCRIPTION	DATE

DATE: NOVEMBER 2025

DRAWN BY: Z.J.L.

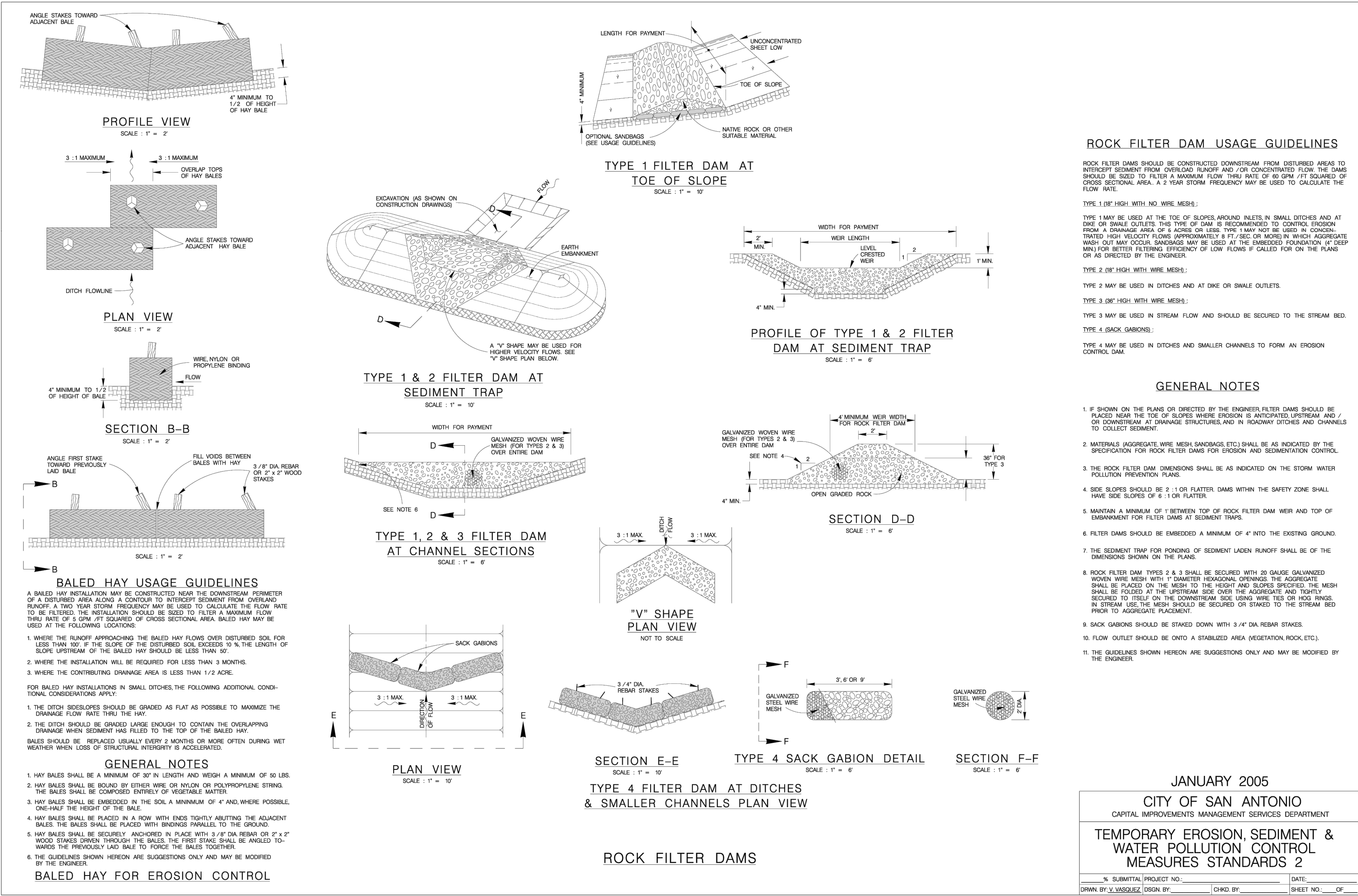
DESIGNED BY: MTA

REVIEWED BY: MTA

HMT PROJECT NO.: 337.110

SHEET

2 OF 3

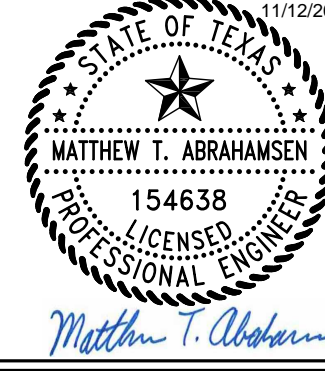
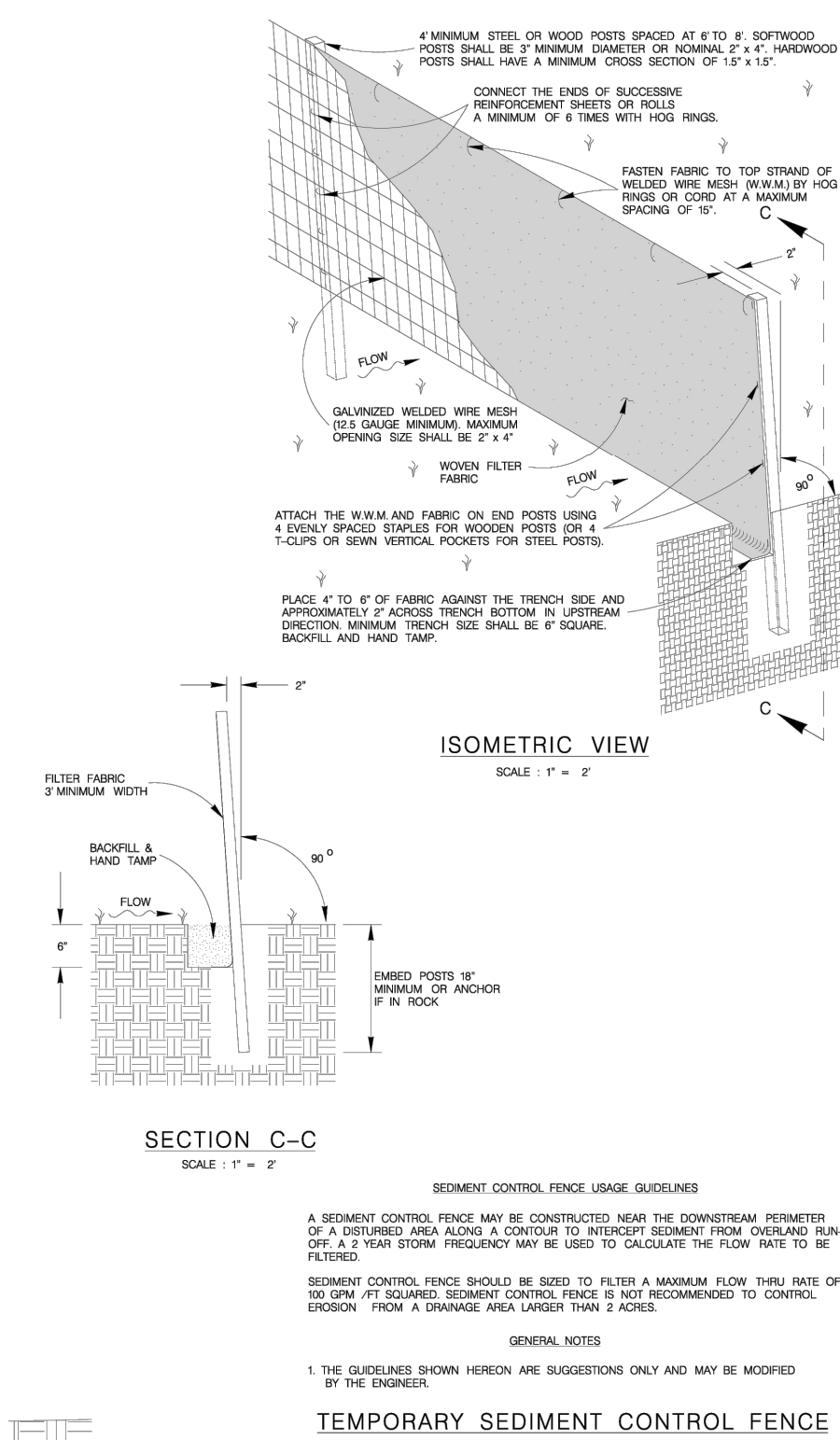
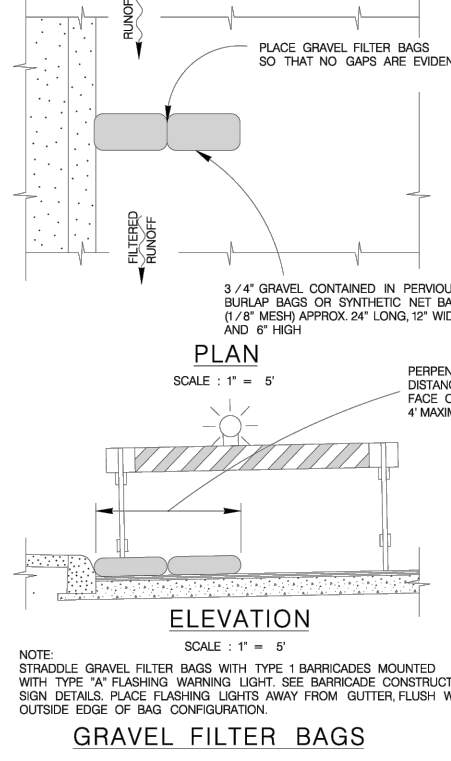
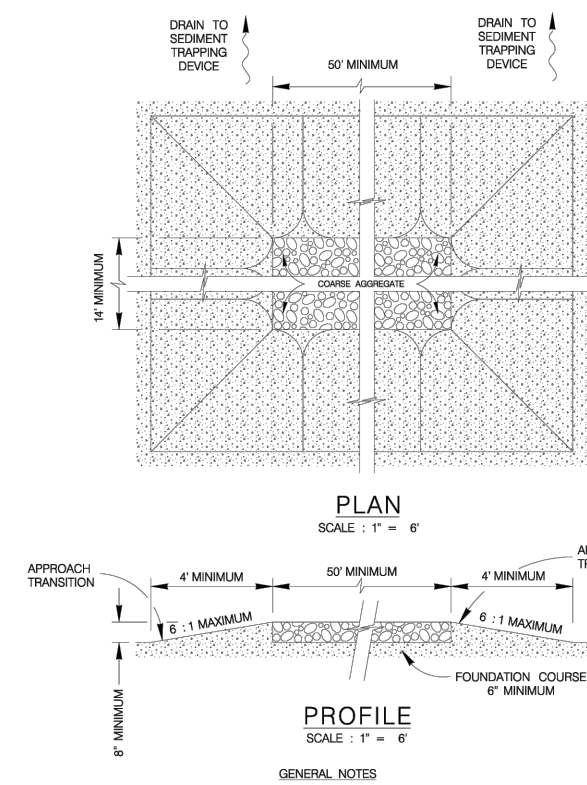


HAUL ROUTE
EROSION CONTROL DETAILS
GUADALUPE COUNTY, TX

REVISION	DESCRIPTION	DATE
NO.		

DATE: NOVEMBER 2025
DRAWN BY: ZJL
DESIGNED BY: MTA
REVIEWED BY: MTA
HMT PROJECT NO.: 337.110

THE LOCATION OF ALL EXISTING UNDERGROUND UTILITIES ARE SHOWN IN APPROXIMATE LOCATIONS ONLY. THE CONTRACTOR SHALL DETERMINE THE EXACT LOCATION OF ALL EXISTING UTILITIES BEFORE COMMENCING WORK. THE CONTRACTOR WILL AGREE TO BE FULLY RESPONSIBLE FOR ANY AND ALL DAMAGES WHICH MIGHT BE INCURRED BY THEIR FAILURE TO EXACTLY LOCATE AND PRESERVE ANY AND ALL UNDERGROUND UTILITIES, STRUCTURES OR FACILITIES. CONTRACTOR SHALL NOTIFY ENGINEER OF ANY DISCREPANCIES 24-HOURS PRIOR TO COMMENCING CONSTRUCTION.



290 S. CASTELL AVE., STE. 100
NEW BRAUNFELS, TX 78130
TBPELS FIRM F-10961
TBPELS FIRM 10153600

