

BENCHMARK LOCATION MAP
NOT-TO-SCALE

NUMBER	NORTHING/EASTING	ELEVATION	DESCRIPTION
104	2134239.64	13667131.27	SIGTV
105	2135225.14	13667152.88	SIGTV
106	2136253.51	13663994.19	SIGTV
107	2136910.77	13661555.14	SIGTV
109	2138141.40	13667147.99	SIGTV
110	2139641.31	13667151.22	SIGTV
111	2140529.66	13667147.55	SIGTV
112	2141547.03	13667170.87	SIGTV
209	2137056.40	1366031.88	583.16
211	2137959.03	13662102.8	573.79
223	2136739.20	13661836.78	580.77
300	2140313.48	13660477.95	545.31
301	2140289.02	13660558.62	545.17
302	2140195.36	13660766.07	541.92
304	2139877.28	13661442.05	538.56
305	2139775.87	13661689.89	540.28
306	2139161.43	13661654.29	552.08
307	2137696.58	13661770.81	576.06
308	2137306.70	13662217.96	575.45
400	2139049.73	13666948.91	578.74
401	2138689.77	13666250.38	579.62
402	2138565.79	13665696.4	577.16
403	2138610.70	13665224.03	574.46
404	2139202.41	13666191.18	576.42
405	2139197.12	13664932.25	575.39
406	2139228.36	13664429.15	566.28
407	2139224.11	13663926.62	556.61
408	2138615.57	13664987.14	572.67
409	2138628.71	13663860.6	572.89
410	2137762.56	13663213.55	568.33
411	2137759.32	13662745.14	575.58
412	2137791.62	13662363.23	568.83

VARIABLE WIDTH MAINTENANCE ACCESS, SANITARY SEWER, WATER, ELECTRIC, GAS, TELEPHONE, CABLE TELEVISION, AND PUBLIC DRAINAGE EASEMENT, ENTIRE EASEMENT TO EXPIRE UPON INCORPORATION INTO FUTURE PLATTED PUBLIC STREET RIGHT-OF-WAY (PLAT # 22-11800659)

LIFT STATION ROAD (SEE ESPADA TRACT PHASE 1 CONSTRUCTION PLAN)

PERDIGUERA PLACE (VARIABLE WIDTH RIGHT-OF-WAY)

ESPADA RIDGE (FOR RIGHT-OF-WAY)

MINITA CREEK (FOR RIGHT-OF-WAY)

DOLORES RIDGE (FOR RIGHT-OF-WAY)

CAUTION!!! WATER/SEWER CROSSING

CAUTION!!! DRAIN/SEWER CROSSING

CAUTION!!! DRAIN/SEWER CROSSING

CAUTION!!! DRAIN/SEWER CROSSING

CAUTION!!! DRAIN/SEWER CROSSING

CAUTION!!! DRAIN/SEWER CROSSING

CAUTION!!! DRAIN/SEWER CROSSING

CAUTION!!! DRAIN/SEWER CROSSING

CAUTION!!! DRAIN/SEWER CROSSING

CAUTION!!! DRAIN/SEWER CROSSING

CAUTION!!! DRAIN/SEWER CROSSING

CAUTION!!! DRAIN/SEWER CROSSING

CAUTION!!! DRAIN/SEWER CROSSING

CAUTION!!! DRAIN/SEWER CROSSING

CAUTION!!! DRAIN/SEWER CROSSING

CAUTION!!! DRAIN/SEWER CROSSING

CAUTION!!! DRAIN/SEWER CROSSING

CAUTION!!! DRAIN/SEWER CROSSING

CAUTION!!! DRAIN/SEWER CROSSING

CAUTION!!! DRAIN/SEWER CROSSING

CAUTION!!! DRAIN/SEWER CROSSING

CAUTION!!! DRAIN/SEWER CROSSING

CAUTION!!! DRAIN/SEWER CROSSING

CAUTION!!! DRAIN/SEWER CROSSING

CAUTION!!! DRAIN/SEWER CROSSING

CAUTION!!! DRAIN/SEWER CROSSING

CAUTION!!! DRAIN/SEWER CROSSING

CAUTION!!! DRAIN/SEWER CROSSING

CAUTION!!! DRAIN/SEWER CROSSING

CAUTION!!! DRAIN/SEWER CROSSING

CAUTION!!! DRAIN/SEWER CROSSING

CAUTION!!! DRAIN/SEWER CROSSING

CAUTION!!! DRAIN/SEWER CROSSING

CAUTION!!! DRAIN/SEWER CROSSING

CAUTION!!! DRAIN/SEWER CROSSING

CAUTION!!! DRAIN/SEWER CROSSING

CAUTION!!! DRAIN/SEWER CROSSING

CAUTION!!! DRAIN/SEWER CROSSING

CAUTION!!! DRAIN/SEWER CROSSING

CAUTION!!! DRAIN/SEWER CROSSING

CAUTION!!! DRAIN/SEWER CROSSING

CAUTION!!! DRAIN/SEWER CROSSING

CAUTION!!! DRAIN/SEWER CROSSING

CAUTION!!! DRAIN/SEWER CROSSING

CAUTION!!! DRAIN/SEWER CROSSING

CAUTION!!! DRAIN/SEWER CROSSING

CAUTION!!! DRAIN/SEWER CROSSING

CAUTION!!! DRAIN/SEWER CROSSING

CAUTION!!! DRAIN/SEWER CROSSING

CAUTION!!! DRAIN/SEWER CROSSING

CAUTION!!! DRAIN/SEWER CROSSING

CAUTION!!! DRAIN/SEWER CROSSING

CAUTION!!! DRAIN/SEWER CROSSING

CAUTION!!! DRAIN/SEWER CROSSING

CAUTION!!! DRAIN/SEWER CROSSING

CAUTION!!! DRAIN/SEWER CROSSING

CAUTION!!! DRAIN/SEWER CROSSING

CAUTION!!! DRAIN/SEWER CROSSING

CAUTION!!! DRAIN/SEWER CROSSING

CAUTION!!! DRAIN/SEWER CROSSING

CAUTION!!! DRAIN/SEWER CROSSING

CAUTION!!! DRAIN/SEWER CROSSING

CAUTION!!! DRAIN/SEWER CROSSING

CAUTION!!! DRAIN/SEWER CROSSING

CAUTION!!! DRAIN/SEWER CROSSING

CAUTION!!! DRAIN/SEWER CROSSING

CAUTION!!! DRAIN/SEWER CROSSING

CAUTION!!! DRAIN/SEWER CROSSING

CAUTION!!! DRAIN/SEWER CROSSING

CAUTION!!! DRAIN/SEWER CROSSING

CAUTION!!! DRAIN/SEWER CROSSING

CAUTION!!! DRAIN/SEWER CROSSING

CAUTION!!! DRAIN/SEWER CROSSING

CAUTION!!! DRAIN/SEWER CROSSING

CAUTION!!! DRAIN/SEWER CROSSING

CAUTION!!! DRAIN/SEWER CROSSING

CAUTION!!! DRAIN/SEWER CROSSING

CAUTION!!! DRAIN/SEWER CROSSING

CAUTION!!! DRAIN/SEWER CROSSING

CAUTION!!! DRAIN/SEWER CROSSING

CAUTION!!! DRAIN/SEWER CROSSING

CAUTION!!! DRAIN/SEWER CROSSING

CAUTION!!! DRAIN/SEWER CROSSING

CAUTION!!! DRAIN/SEWER CROSSING

CAUTION!!! DRAIN/SEWER CROSSING

CAUTION!!! DRAIN/SEWER CROSSING

CAUTION!!! DRAIN/SEWER CROSSING

CAUTION!!! DRAIN/SEWER CROSSING

CAUTION!!! DRAIN/SEWER CROSSING

CAUTION!!! DRAIN/SEWER CROSSING

CAUTION!!! DRAIN/SEWER CROSSING

CAUTION!!! DRAIN/SEWER CROSSING

CAUTION!!! DRAIN/SEWER CROSSING

CAUTION!!! DRAIN/SEWER CROSSING

CAUTION!!! DRAIN/SEWER CROSSING

CAUTION!!! DRAIN/SEWER CROSSING

CAUTION!!! DRAIN/SEWER CROSSING

CAUTION!!! DRAIN/SEWER CROSSING

CAUTION!!! DRAIN/SEWER CROSSING

CAUTION!!! DRAIN/SEWER CROSSING

CAUTION!!! DRAIN/SEWER CROSSING

CAUTION!!! DRAIN/SEWER CROSSING

CAUTION!!! DRAIN/SEWER CROSSING

CAUTION!!! DRAIN/SEWER CROSSING

CAUTION!!! DRAIN/SEWER CROSSING

CAUTION!!! DRAIN/SEWER CROSSING

CAUTION!!! DRAIN/SEWER CROSSING

CAUTION!!! DRAIN/SEWER CROSSING

CAUTION!!! DRAIN/SEWER CROSSING

CAUTION!!! DRAIN/SEWER CROSSING

CAUTION!!! DRAIN/SEWER CROSSING

CAUTION!!! DRAIN/SEWER CROSSING

CAUTION!!! DRAIN/SEWER CROSSING

CAUTION!!! DRAIN/SEWER CROSSING

CAUTION!!! DRAIN/SEWER CROSSING

CAUTION!!! DRAIN/SEWER CROSSING

CAUTION!!! DRAIN/SEWER CROSSING

CAUTION!!! DRAIN/SEWER CROSSING

CAUTION!!! DRAIN/SEWER CROSSING

CAUTION!!! DRAIN/SEWER CROSSING

CAUTION!!! DRAIN/SEWER CROSSING

CAUTION!!! DRAIN/SEWER CROSSING

CAUTION!!! DRAIN/SEWER CROSSING

CAUTION!!! DRAIN/SEWER CROSSING

CAUTION!!! DRAIN/SEWER CROSSING

CAUTION!!! DRAIN/SEWER CROSSING

CAUTION!!! DRAIN/SEWER CROSSING

CAUTION!!! DRAIN/SEWER CROSSING

CAUTION!!! DRAIN/SEWER CROSSING

CAUTION!!! DRAIN/SEWER CROSSING

CAUTION!!! DRAIN/SEWER CROSSING

CAUTION!!! DRAIN/SEWER CROSSING

CAUTION!!! DRAIN/SEWER CROSSING

CAUTION!!! DRAIN/SEWER CROSSING

CAUTION!!! DRAIN/SEWER CROSSING

CAUTION!!! DRAIN/SEWER CROSSING

CAUTION!!! DRAIN/SEWER CROSSING

CAUTION!!! DRAIN/SEWER CROSSING

CAUTION!!! DRAIN/SEWER CROSSING

CAUTION!!! DRAIN/SEWER CROSSING

CAUTION!!! DRAIN/SEWER CROSSING

CAUTION!!! DRAIN/SEWER CROSSING

CAUTION!!! DRAIN/SEWER CROSSING

CAUTION!!! DRAIN/SEWER CROSSING

CAUTION!!! DRAIN/SEWER CROSSING

CAUTION!!! DRAIN/SEWER CROSSING

CAUTION!!! DRAIN/SEWER CROSSING

CAUTION!!! DRAIN/SEWER CROSSING

CAUTION!!! DRAIN/SEWER CROSSING

CAUTION!!! DRAIN/SEWER CROSSING

CAUTION!!! DRAIN/SEWER CROSSING

CAUTION!!! DRAIN/SEWER CROSSING

CAUTION!!! DRAIN/SEWER CROSSING

CAUTION!!! DRAIN/SEWER CROSSING

CAUTION!!! DRAIN/SEWER CROSSING

CAUTION!!! DRAIN/SEWER CROSSING

CAUTION!!! DRAIN/SEWER CROSSING

CAUTION!!! DRAIN/SEWER CROSSING

CAUTION!!! DRAIN/SEWER CROSSING

CAUTION!!! DRAIN/SEWER CROSSING

CAUTION!!! DRAIN/SEWER CROSSING

CAUTION!!! DRAIN/SEWER CROSSING

CAUTION!!! DRAIN/SEWER CROSSING

CAUTION!!! DRAIN/SEWER CROSSING

CAUTION!!! DRAIN/SEWER CROSSING

CAUTION!!! DRAIN/SEWER CROSSING

CAUTION!!! DRAIN/SEWER CROSSING

CAUTION!!! DRAIN/SEWER CROSSING

CAUTION!!! DRAIN/SEWER CROSSING

CAUTION!!! DRAIN/SEWER CROSSING

CAUTION!!! DRAIN/SEWER CROSSING

CAUTION!!! DRAIN/SEWER CROSSING

CAUTION!!! DRAIN/SEWER CROSSING

CAUTION!!! DRAIN/SEWER CROSSING

CAUTION!!! DRAIN/SEWER CROSSING

CAUTION!!! DRAIN/SEWER CROSSING

CAUTION!!! DRAIN/SEWER CROSSING

CAUTION!!! DRAIN/SEWER CROSSING

CAUTION!!! DRAIN/SEWER CROSSING

CAUTION!!! DRAIN/SEWER CROSSING

CAUTION!!! DRAIN/SEWER CROSSING

CAUTION!!! DRAIN/SEWER CROSSING

CAUTION!!! DRAIN/SEWER CROSSING

CAUTION!!! DRAIN/SEWER CROSSING

CAUTION!!! DRAIN/SEWER CROSSING

CAUTION!!! DRAIN/SEWER CROSSING

CAUTION!!! DRAIN/SEWER CROSSING

CAUTION!!! DRAIN/SEWER CROSSING

CAUTION!!! DRAIN/SEWER CROSSING

CAUTION!!! DRAIN/SEWER CROSSING

CAUTION!!! DRAIN/SEWER CROSSING

CAUTION!!! DRAIN/SEWER CROSSING

CAUTION!!! DRAIN/SEWER CROSSING

CAUTION!!! DRAIN/SEWER CROSSING

CAUTION!!! DRAIN/SEWER CROSSING

CAUTION!!! DRAIN/SEWER CROSSING

CAUTION!!! DRAIN/SEWER CROSSING

CAUTION!!! DRAIN/SEWER CROSSING

CAUTION!!! DRAIN/SEWER CROSSING

CAUTION!!! DRAIN/SEWER CROSSING

CAUTION!!! DRAIN/SEWER CROSSING

CAUTION!!! DRAIN/SEWER CROSSING

CAUTION!!! DRAIN/SEWER CROSSING

CAUTION!!! DRAIN/SEWER CROSSING

CAUTION!!! DRAIN/SEWER CROSSING

CAUTION!!! DRAIN/SEWER CROSSING

CAUTION!!! DRAIN/SEWER CROSSING

CAUTION!!! DRAIN/SEWER CROSSING

CAUTION!!! DRAIN/SEWER CROSSING

CAUTION!!! DRAIN/SEWER CROSSING

CAUTION!!! DRAIN/SEWER CROSSING

CAUTION!!! DRAIN/SEWER CROSSING

CAUTION!!! DRAIN/SEWER CROSSING

CAUTION!!! DRAIN/SEWER CROSSING

CAUTION!!! DRAIN/SEWER CROSSING

CAUTION!!! DRAIN/SEWER CROSSING

CAUTION!!! DRAIN/SEWER CROSSING

CAUTION!!! DRAIN/SEWER CROSSING

CAUTION!!! DRAIN/SEWER CROSSING

CAUTION!!! DRAIN/SEWER CROSSING

CAUTION!!! DRAIN/SEWER CROSSING

CAUTION!!! DRAIN/SEWER CROSSING

CAUTION!!! DRAIN/SEWER CROSSING

CAUTION!!! DRAIN/SEWER CROSSING

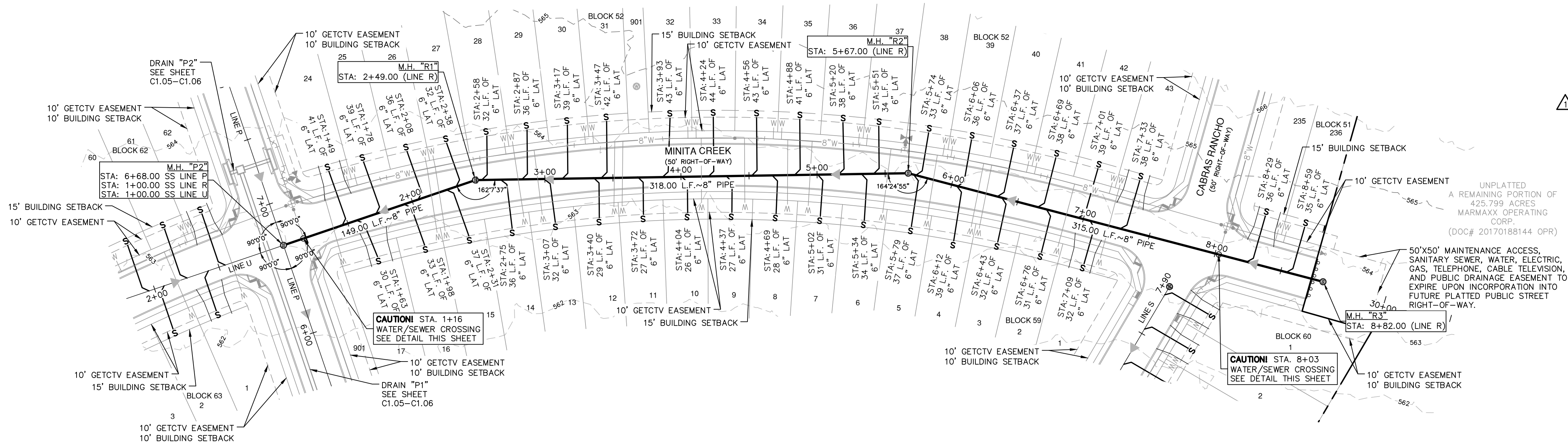
CAUTION!!! DRAIN/SEWER CROSSING

CAUTION!!! DRAIN/SEWER CROSSING

CAUTION!!! DRAIN/SEWER CROSSING

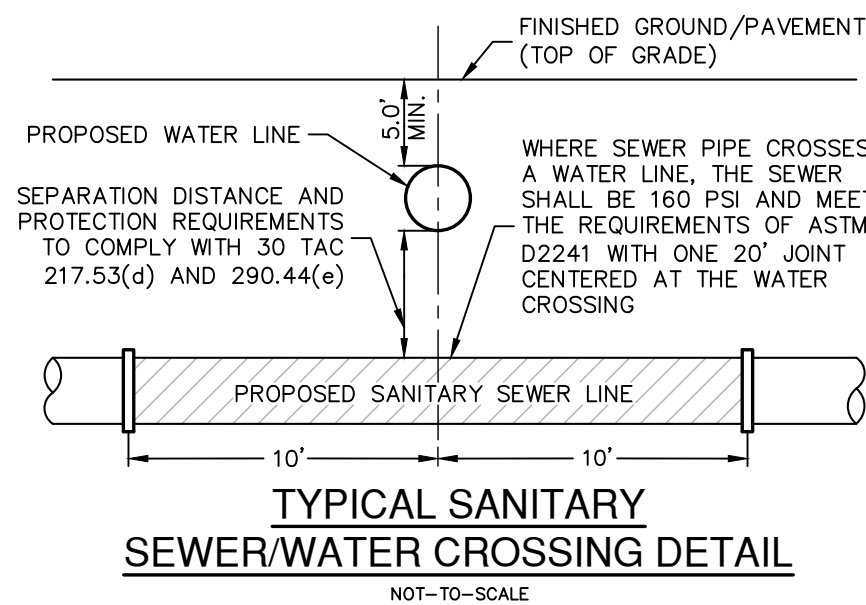
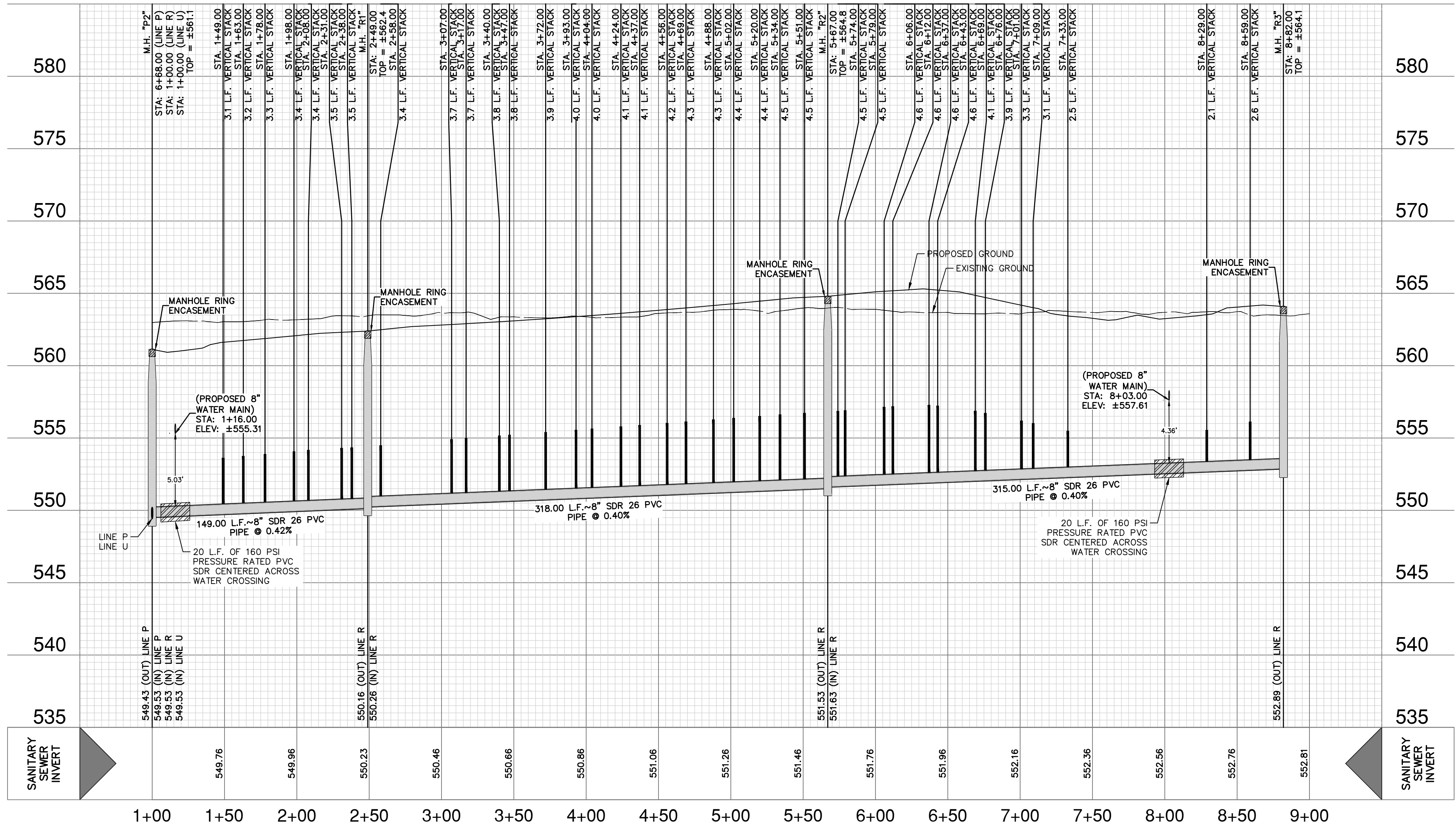
Date: Feb 02, 2024, 9:40am User: B: krommshs
File: E:\2023\24\Design\Chas\52526214 LINE R.dwg

THIS DOCUMENT HAS BEEN PRODUCED FROM MATERIAL THAT WAS STORED AND/OR TRANSMITTED ELECTRONICALLY AND MAY HAVE BEEN INADVERTENTLY ALTERED. RELY ONLY ON FINAL HARDCOPY MATERIALS BEARING THE CONSULTANT'S ORIGINAL SIGNATURE AND SEAL. MASTERY PROVIDED BY GOOGLE; UNLESS OTHERWISE NOTED. Imagery © 2016, CAPCO, Digital Globe, Texas Orthology Program, USDA Farm Service Agency.



SANITARY SEWER LINE "R"
STA. 1+00.00 TO END

VERTICAL SCALE: 1" = 5'
HORIZONTAL SCALE: 1" = 50'



CAUTION!!

CONTRACTOR SHALL BE REQUIRED TO LOCATE ALL PUBLIC OR PRIVATE UTILITIES INCLUDING BUT NOT LIMITING TO: WATER, SEWER, TELEPHONE AND FIBER OPTIC LINES, SITE LIGHTING, ELECTRIC, SECONDARY ELECTRIC, PRIMARY ELECTRICAL DUCTBANKS, LANDSCAPE IRRIGATION FACILITIES, AND GAS LINES. ANY UTILITY CONFLICTS THAT ARISE SHOULD BE COMMUNICATED TO THE ENGINEER IMMEDIATELY AND PRIOR TO CONSTRUCTION. THE CONTRACTOR SHALL CONTACT 1-800-DIG-TESS A MINIMUM OF 48 HOURS PRIOR TO THE START OF CONSTRUCTION. ANY DAMAGE TO EXISTING UTILITIES SHALL BE THE SOLE RESPONSIBILITY OF THE CONTRACTOR AND THE REPAIR SHALL BE AT CONTRACTOR'S SOLE EXPENSE WHETHER THE UTILITY IS SHOWN ON THESE PLANS OR NOT.

TRENCH EXCAVATION SAFETY PROTECTION:

CONTRACTOR AND/ OR CONTRACTOR'S INDEPENDENTLY RETAINED EMPLOYEE OR STRUCTURAL DESIGN/ GEOTECHNICAL/ SAFETY/EQUIPMENT CONSULTANT, IF ANY, SHALL REVIEW THESE PLANS AND ANY AVAILABLE GEOTECHNICAL INFORMATION AND THE ANTICIPATED INSTALLATION SITES WITHIN THE PROJECT WORK AREA IN ORDER TO IMPLEMENT CONTRACTOR'S TRENCH EXCAVATION SAFETY PROTECTION SYSTEMS, PROGRAMS AND OR PROCEDURES FOR THE PROJECT DESCRIBED IN THE CONTRACT DOCUMENTS. THE CONTRACTOR'S IMPLEMENTATION OF THESE SYSTEMS, PROGRAMS AND/OR PROCEDURES SHALL PROVIDE FOR ADEQUATE TRENCH EXCAVATION SAFETY PROTECTION THAT COMPLY WITH AS A MINIMUM, OSHA STANDARDS FOR TRENCH EXCAVATIONS. SPECIFICALLY, CONTRACTOR AND/OR CONTRACTOR'S INDEPENDENTLY RETAINED EMPLOYEE OR SAFETY CONSULTANT SHALL IMPLEMENT A TRENCH SAFETY PROGRAM IN ACCORDANCE WITH OSHA STANDARDS GOVERNING THE PRESENCE AND ACTIVITIES OF INDIVIDUALS WORKING IN AND AROUND TRENCH EXCAVATION.

LOWER - EAST SEWERSHED - DOS RIOS/LEON CREEK

DEVELOPER'S NAME: LENNAR HOMES OF TEXAS			
ADDRESS: 100 NE LOOP 410, STE. 1155			
CITY: SAN ANTONIO	STATE: TEXAS	ZIP: 78216	
PHONE# (210) 403-6200	FAX# N/A		
SAWS BLOCK MAP# 170536, TOTAL EDU'S 138, TOTAL ACREAGE 19.33			
TOTAL LINEAR FOOTAGE OF PIPE: 5217 LF. OF 8" SDR 26 PVC			
NUMBER OF LOTS 138	SAWS JOB NO. 23-1603		

PAPE-DAWSON
ENGINEERS

SAN ANTONIO | AUSTIN | HOUSTON | FORT WORTH | DALLAS
2000 HW LOOP 410 | SAN ANTONIO, TX 78213 | 210.375.9000
TEXAS ENGINEERING FIRM #470 | TEXAS SURVEYING FIRM #1008800

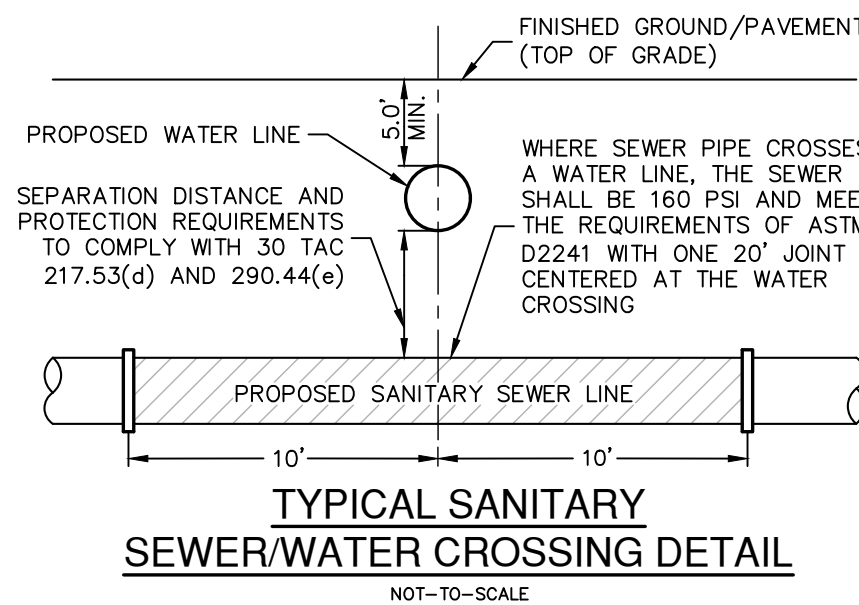
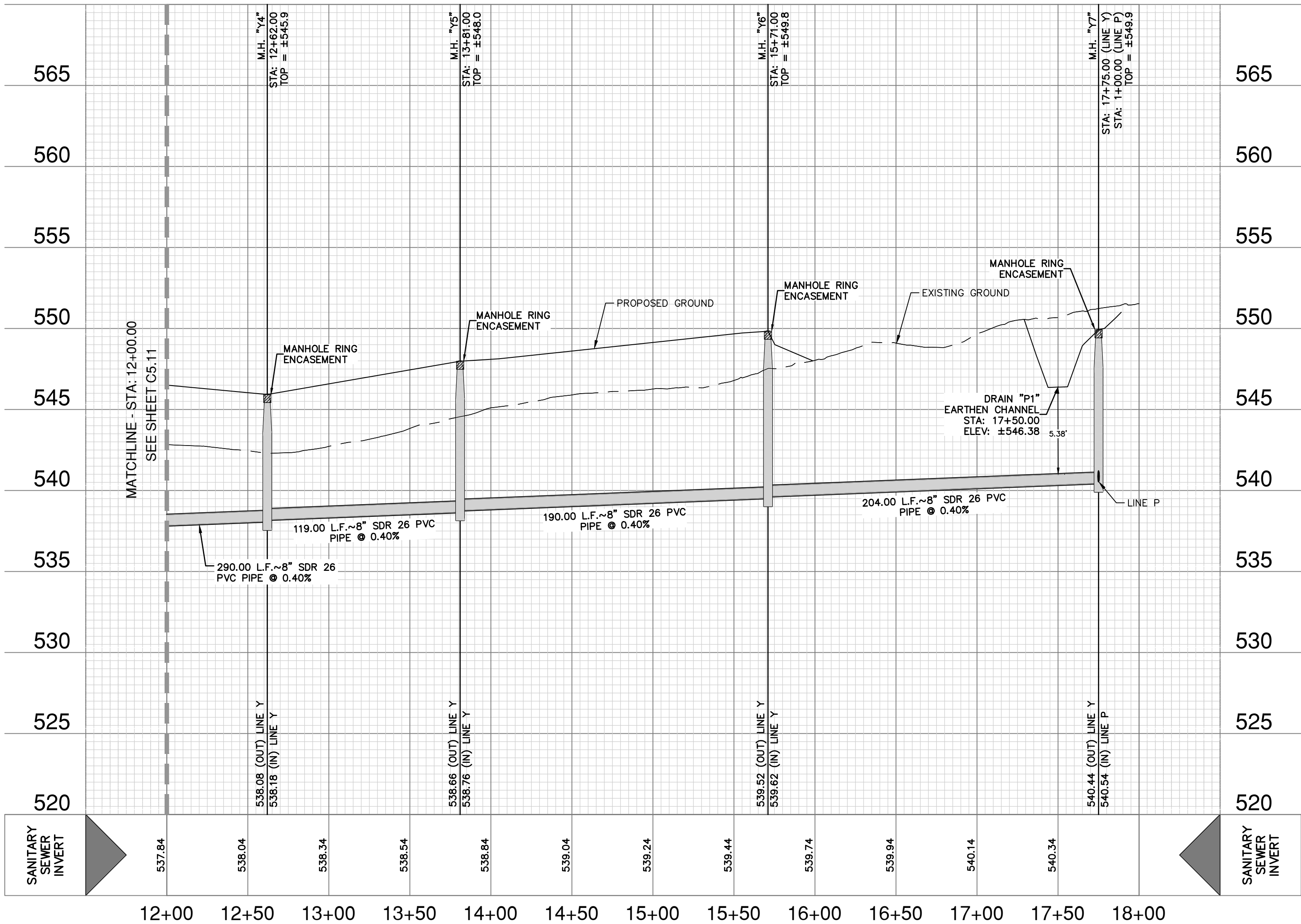
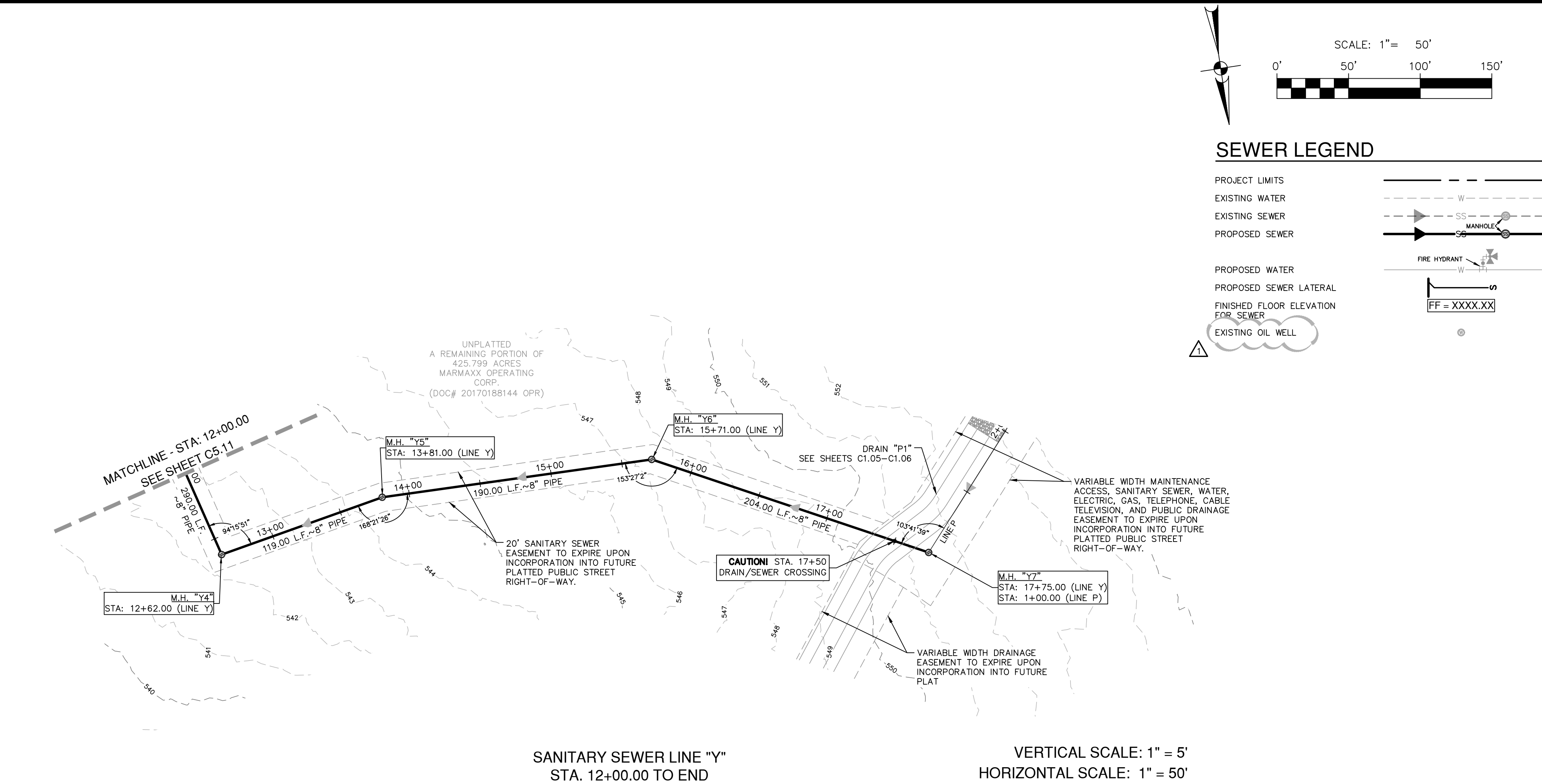
ESPADA TRACT UNIT 15
SAN ANTONIO, TEXAS

SS LINE R PLAN & PROFILE (STA 1+00.00 TO END)

PLAT NO	23-11800231
JOB NO.	12632-14
DATE	JULY 2023
DESIGNER	JG
CHECKED	DW DRAWN TC
SHEET	C5.08

Date: Feb 02, 2024 9:43am User: B: kcmachado
File: E:\2023\23-114\Design\DWG\23-1180023-1 SS LINE Y.dwg

THIS DOCUMENT HAS BEEN PRODUCED FROM MATERIAL THAT WAS STORED AND/OR TRANSMITTED ELECTRONICALLY AND MAY HAVE BEEN INADVERTENTLY ALTERED. RELY ONLY ON FINAL HARDCOPY MATERIALS BEARING THE CONSULTANT'S ORIGINAL SIGNATURE AND SEAL. AERIAL IMAGERY PROVIDED BY GOOGLE® UNLESS OTHERWISE NOTED. Imagery © 2016/CAPCOG/Digital Globe, Texas Orthology Program, USDA Farm Service Agency.



CAUTION!!

CONTRACTOR SHALL BE REQUIRED TO LOCATE ALL PUBLIC OR PRIVATE UTILITIES INCLUDING BUT NOT LIMITING TO: WATER, SEWER, TELEPHONE AND FIBER OPTIC LINES, SITE LIGHTING, ELECTRIC, SECONDARY ELECTRIC, PRIMARY ELECTRICAL DUCTBANKS, LANDSCAPE IRRIGATION FACILITIES, AND GAS LINES. ANY UTILITY CONFLICTS THAT ARISE SHOULD BE COMMUNICATED TO THE ENGINEER IMMEDIATELY AND PRIOR TO CONSTRUCTION. THE CONTRACTOR SHALL CONTACT 1-800-DIG-TESS A MINIMUM OF 48 HOURS PRIOR TO THE START OF CONSTRUCTION. ANY DAMAGE TO EXISTING UTILITIES SHALL BE THE SOLE RESPONSIBILITY OF THE CONTRACTOR AND THE REPAIR SHALL BE AT CONTRACTOR'S SOLE EXPENSE WHETHER THE UTILITY IS SHOWN ON THESE PLANS OR NOT.

TRENCH EXCAVATION SAFETY PROTECTION:

CONTRACTOR AND/ OR CONTRACTOR'S INDEPENDENTLY RETAINED EMPLOYEE OR STRUCTURAL DESIGN/ GEOTECHNICAL/ SAFETY/EQUIPMENT CONSULTANT, IF ANY, SHALL REVIEW THESE PLANS AND ANY AVAILABLE GEOTECHNICAL INFORMATION AND THE ANTICIPATED INSTALLATION SITES WITHIN THE PROJECT WORK AREA IN ORDER TO IMPLEMENT CONTRACTOR'S TRENCH EXCAVATION SAFETY PROTECTION SYSTEMS, PROGRAMS AND OR PROCEDURES FOR THE PROJECT DESCRIBED IN THE CONTRACT DOCUMENTS. THE CONTRACTOR'S IMPLEMENTATION OF THESE SYSTEMS, PROGRAMS AND/OR PROCEDURES SHALL PROVIDE FOR ADEQUATE TRENCH EXCAVATION SAFETY PROTECTION THAT COMPLY WITH AS A MINIMUM, OSHA STANDARDS FOR TRENCH EXCAVATIONS. SPECIFICALLY, CONTRACTOR AND/OR CONTRACTOR'S INDEPENDENTLY RETAINED EMPLOYEE OR SAFETY CONSULTANT SHALL IMPLEMENT A TRENCH SAFETY PROGRAM IN ACCORDANCE WITH OSHA STANDARDS GOVERNING THE PRESENCE AND ACTIVITIES OF INDIVIDUALS WORKING IN AND AROUND TRENCH EXCAVATION.

LOWER - EAST SEWERSHED - DOS RIOS/LEON CREEK

DEVELOPER'S NAME: LENNAR HOMES OF TEXAS

ADDRESS: 100 NE LOOP 410, STE. 1155

CITY: SAN ANTONIO STATE: TEXAS ZIP: 78216

PHONE# (210) 403-6200 FAX# N/A

SAWS BLOCK MAP# 170536 TOTAL EDU'S 138 TOTAL ACREAGE 19.33

2899 LF ~12" PVC

TOTAL LINEAR FOOTAGE OF PIPE: 5217 LF ~8" PVC PLAT NO 23-1180023

NUMBER OF LOTS 138 SAWS JOB NO. 23-1603

NO.	REVISION	DATE
1	REVISED SAWS BLOCK AND LEGEND	12/22/23
2	REVISED SAWS BLOCK	02/01/24



**PAPE-DAWSON
ENGINEERS**

SAN ANTONIO | AUSTIN | HOUSTON | FORT WORTH | DALLAS

2000 NW LOOP 410 | SAN ANTONIO, TX 78213 | 210.375.9000

TEXAS ENGINEERING FIRM #470 | TEXAS SURVEYING FIRM #1008860

ESPADA TRACT UNIT 15
SAN ANTONIO, TEXAS

SS LINE Y PLAN & PROFILE (STA 12+00.00 TO END)

PLAT NO 23-11800231

JOB NO. 12632-14

DATE JULY 2023

DESIGNER JG

CHECKED DW DRAWN TC

SHEET C5.12