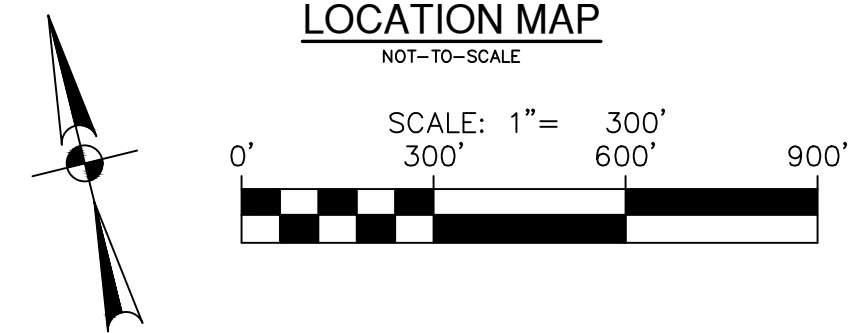
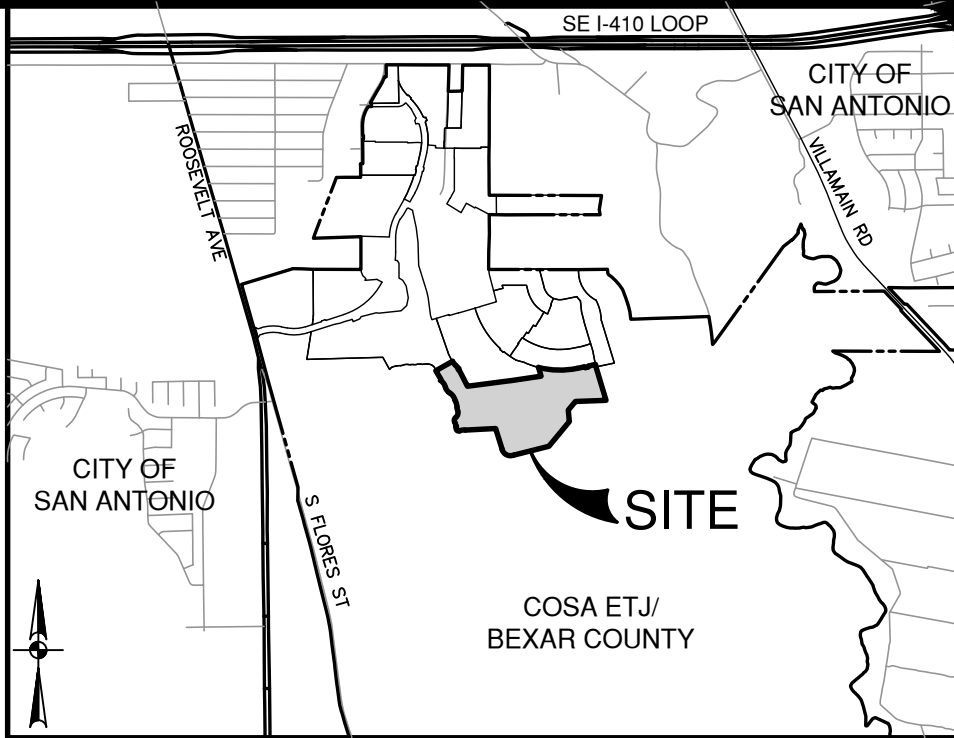
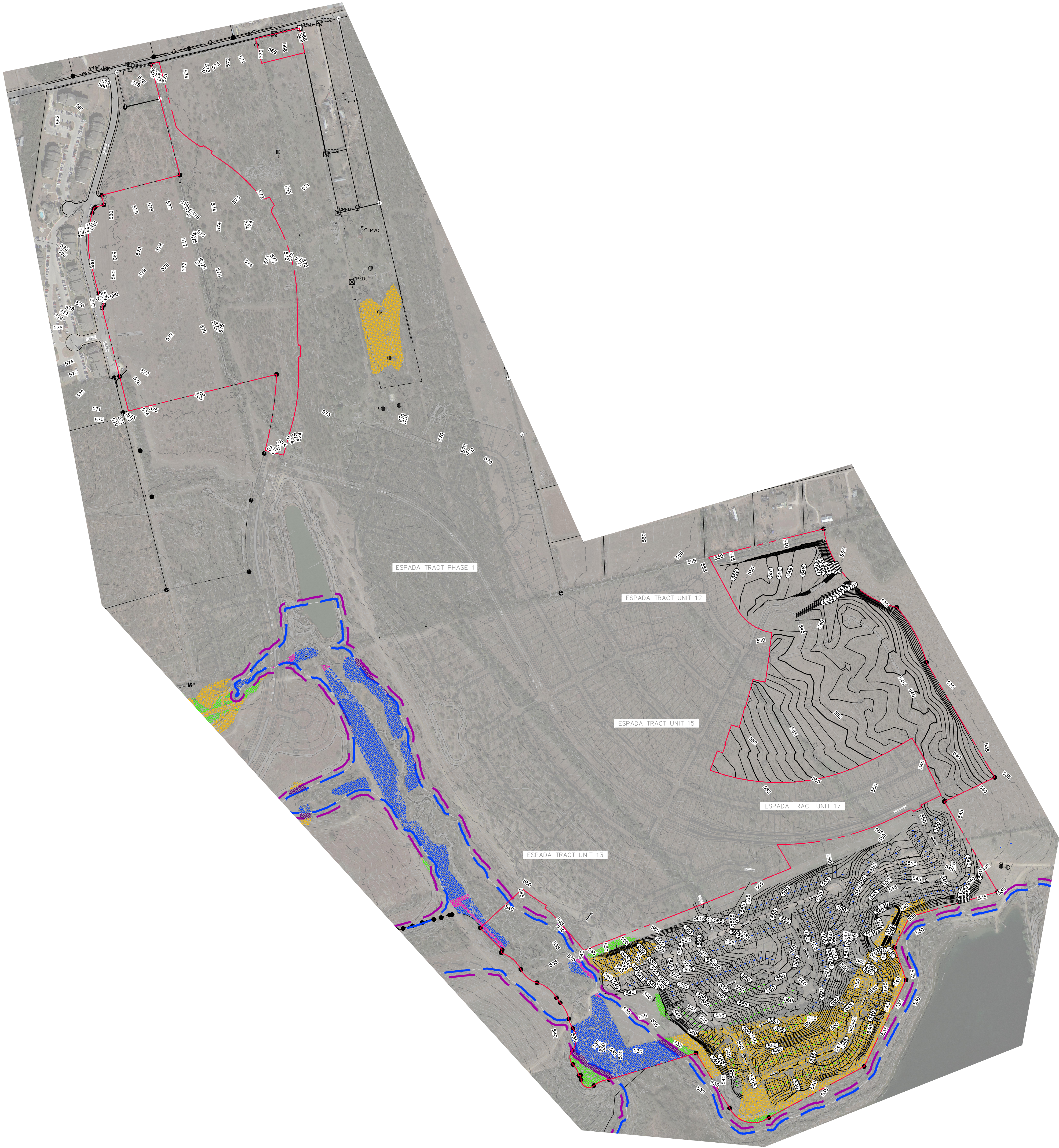


Date: July 18, 2024, 10:47 AM - User ID: tcomacho
File: P:\28\32\20\Design\Civil\Exhibit\Trees\240827 Supplemental Tree

THIS DOCUMENT HAS BEEN PRODUCED FROM MATERIAL THAT WAS STORED AND/OR TRANSMITTED ELECTRONICALLY AND MAY HAVE BEEN INADVERTENTLY ALTERED. RELY ONLY ON FINAL HARDCOPY MATERIALS BEARING THE CONSULTANT'S ORIGINAL SIGNATURE AND SEAL. AERIAL IMAGERY PROVIDED BY GOOGLE® UNLESS OTHERWISE NOTED. Imagery © 2016, CAPCOG, Digital Globe, Texas Orthology Program, USDA Farm Service Agency.



LEGEND

- HERITAGE TREE TO REMAIN WITHIN FLOODPLAIN
- PROTECTED HERITAGE TREE TO BE REMOVED
- HERITAGE TREE TO REMAIN
- FLOODPLAIN BUFFER TREES TO BE REMOVED
- FLOODPLAIN BUFFER TREES TO REMAIN
- HERITAGE TREE IN DECLINE (OR WITHIN RIGHT-OF-WAY NOT COUNTED TOWARDS PRESERVATION CREDIT OR MITIGATION)
- STREETSCAPE TREE
- LOTS TO BE PLANTED WITH 2 ~ LARGE SHADE TREES (2 UDC TREES)(ENERGY EFFICIENCY CREDIT)*
- LOTS TO BE PLANTED WITH 2 ~ LARGE SHADE TREES + 1 ~ MEDIUM SHADE TREE FOR MITIGATION (2 UDC TREES) (ENERGY EFFICIENCY CREDIT)*
- FEMA FLOODPLAIN
- 30' FLOODPLAIN BUFFER
- EXISTING ELEVATION CONTOUR
- PROJECT LIMITS
- PHASE LINE
- EXISTING TREE CANOPY IN SINGLE FAMILY TO BE PRESERVED
- EXISTING TREE CANOPY IN SINGLE FAMILY TO BE REMOVED
- EXISTING TREE CANOPY IN FLOODPLAIN TO BE PRESERVED
- EXISTING TREE CANOPY IN FLOODPLAIN TO BE REMOVED
- EXISTING TREE CANOPY IN FLOODPLAIN BUFFER TO BE PRESERVED
- EXISTING TREE CANOPY IN FLOODPLAIN BUFFER TO BE REMOVED

NO.	REVISION	DATE

PAPE-DAWSON
ENGINEERS

2000 NW LOOP 410 | SAN ANTONIO, TX 78213 | 210.375.9000
TEXAS ENGINEERING FIRM #470 | TEXAS SURVEYING FIRM #10028600

ESPADA TRACT UNIT 16 & 19
SAN ANTONIO, TEXAS
SUPPLEMENTAL TREE EXHIBIT

PLAT NO.	24-11800063
JOB NO.	12632-20
DATE	JULY 2024
DESIGNER	JG
CHECKED	DW
DRAWN	AV
SHEET	C7.06