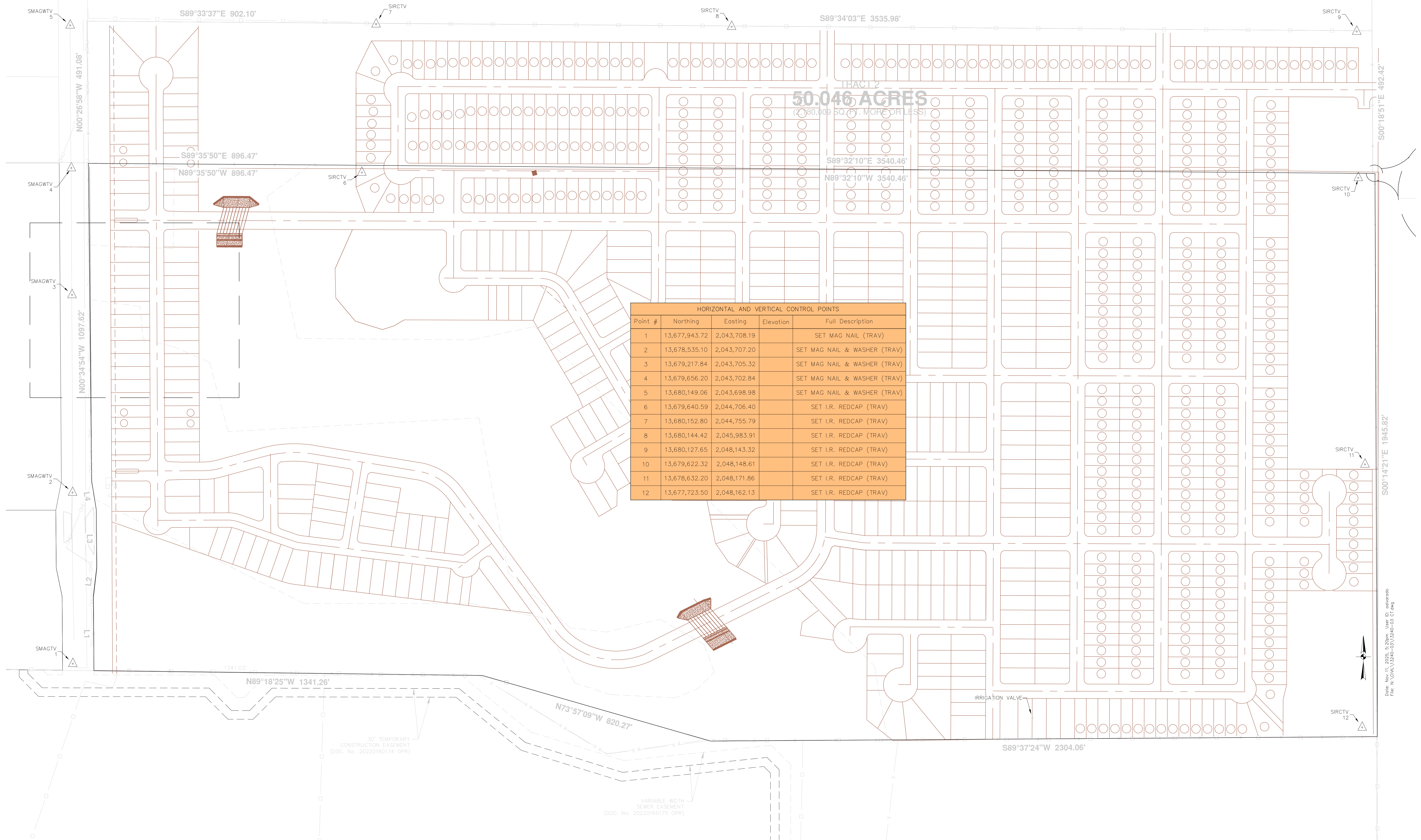


LIDAR FLOWN: 3/07/2025
 IMAGERY FLOWN: 3/07/2025
 TEXAS STATE PLANE SOUTH CENTRAL, US SURVEY FEET
 GEOID 12B
 SURFACE ADJUSTMENT: SURFACE
 SCALE FACTOR TO GRID: 0.9998300288950878



TRACT 2
50.046 ACRES
 (2,190,009 SQ. FT. MORE OR LESS)

HORIZONTAL AND VERTICAL CONTROL POINTS				
Point #	Northing	Easting	Elevation	Full Description
1	13,677,943.72	2,043,708.19		SET MAG NAIL (TRAV)
2	13,678,535.10	2,043,707.20		SET MAG NAIL & WASHER (TRAV)
3	13,679,217.84	2,043,705.32		SET MAG NAIL & WASHER (TRAV)
4	13,679,656.20	2,043,702.84		SET MAG NAIL & WASHER (TRAV)
5	13,680,149.06	2,043,698.98		SET MAG NAIL & WASHER (TRAV)
6	13,679,640.59	2,044,706.40		SET I.R. REDCAP (TRAV)
7	13,680,152.80	2,044,755.79		SET I.R. REDCAP (TRAV)
8	13,680,144.42	2,045,983.91		SET I.R. REDCAP (TRAV)
9	13,680,127.65	2,048,143.32		SET I.R. REDCAP (TRAV)
10	13,679,622.32	2,048,148.61		SET I.R. REDCAP (TRAV)
11	13,678,632.20	2,048,171.86		SET I.R. REDCAP (TRAV)
12	13,677,723.50	2,048,162.13		SET I.R. REDCAP (TRAV)

S00°14'21"E 1945.82'

S00°18'51"E 492.42'

N00°26'58"W 491.08'

N00°34'54"W 1097.62'

S89°33'37"E 902.10'

S89°34'03"E 3535.98'

S89°35'50"E 896.47'

S89°32'10"E 3540.46'

N89°35'50"W 896.47'

N89°32'10"W 3540.46'

N89°18'25"W 1341.26'

N73°57'09"W 820.27'

S89°37'24"W 2304.06'

30' TEMPORARY CONSTRUCTION EASEMENT (DOC. No. 20220160174 OPR)

VARIABLE WIDTH SEWER EASEMENT (DOC. No. 20220160175 OPR)

Date: Nov 11, 2025, 5:20pm User ID: nsherrado
 File: N:\DWG\13240-03\13240-03 CT.dwg