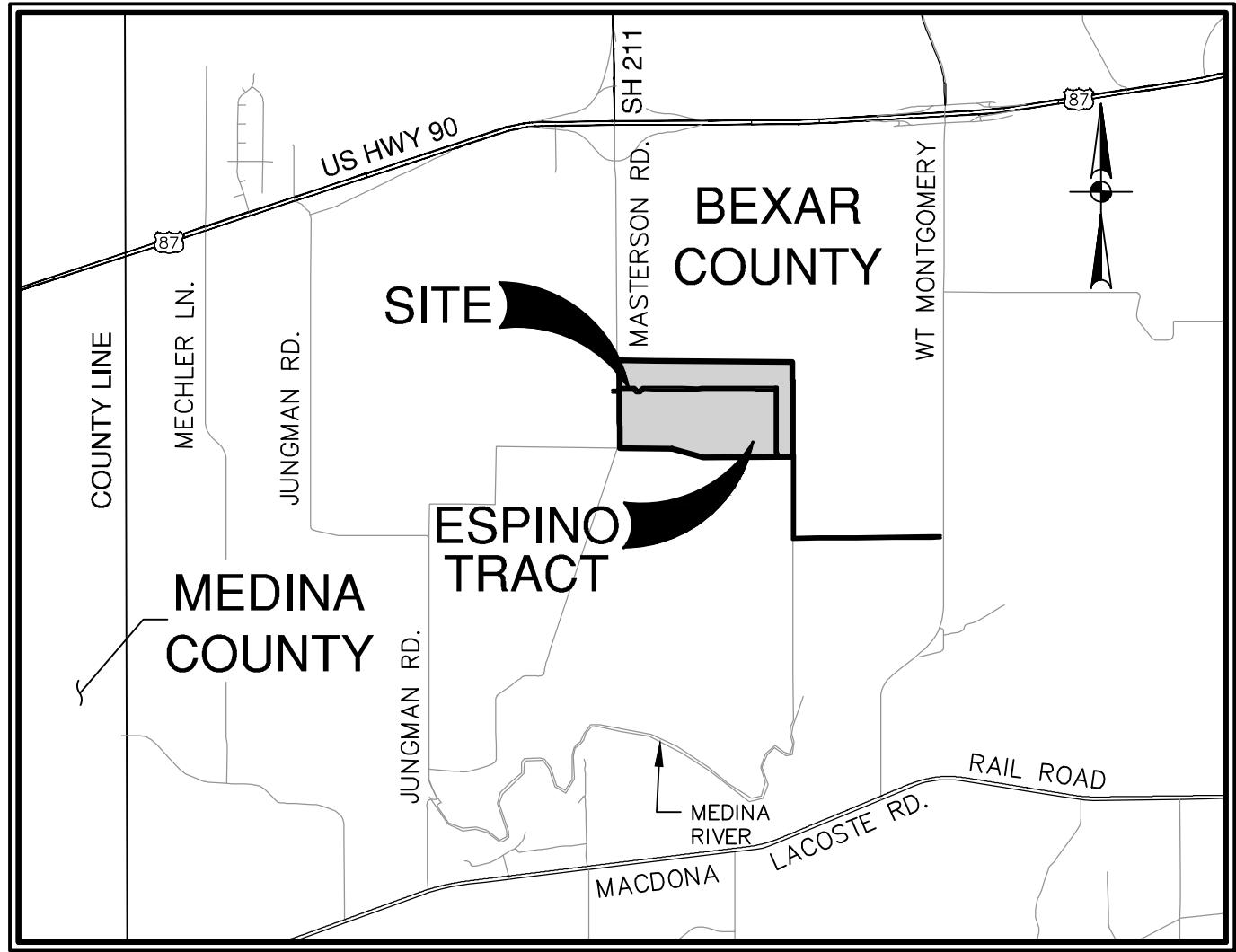


# ESPINO TRACT 16-INCH OFFSITE WATER (OVERSIZED)

SAN ANTONIO, TEXAS

## CIVIL CONSTRUCTION PLANS

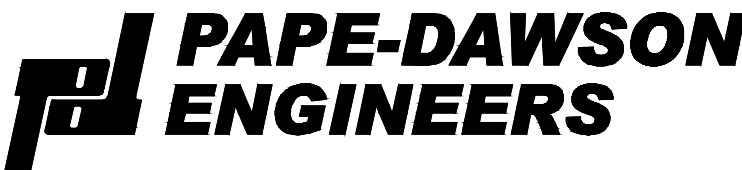


LOCATION MAP  
NOT-TO-SCALE

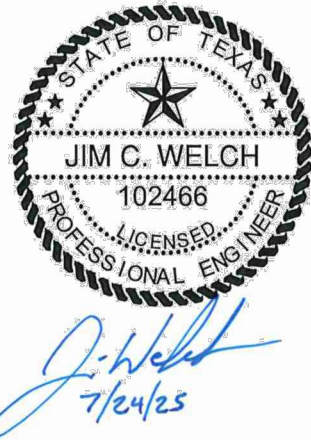
PREPARED FOR:

KB HOME LONE STAR, INC.  
4800 FREDERICKSBURG RD, STE. 100  
SAN ANTONIO, TEXAS 78229

JULY 2025

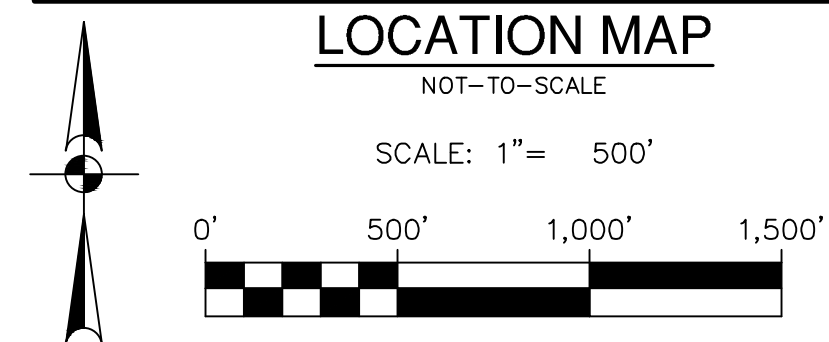
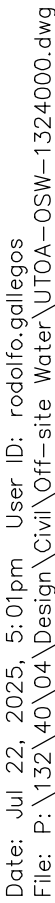


2000 NW LOOP 410 | SAN ANTONIO, TX 78213 | 210.375.9000  
TEXAS ENGINEERING FIRM #470 | TEXAS SURVEYING FIRM #10028800



Sheet List Table	
Sheet Number	Sheet Title
C0.00	COVER SHEET
C1.00	OVERALL UTILITY PLAN
C2.00	STORM WATER POLLUTION PREVENTION PLAN
C2.01	STORM WATER POLLUTION PREVENTION PLAN
C2.02	STORM WATER POLLUTION PREVENTION PLAN
C4.00	OVERALL WATER DISTRIBUTION PLAN
C4.01	OVERALL WATER DISTRIBUTION PLAN
C4.02	OVERALL WATER DISTRIBUTION PLAN
C4.10	OVERALL WATER DISTRIBUTION PLAN DETAILS
C4.11	OVERALL WATER DISTRIBUTION PLAN NOTES

WATER (SAWS PRESSURE ZONE 930)	
DEVELOPER'S NAME: KB HOME LONE STAR, INC.	
ADDRESS: 4800 FREDERICKSBURG RD, STE. 100	
CITY: SAN ANTONIO	STATE: TEXAS ZIP: 78229
PHONE# 210-301-5485	EMAIL
SAWS BLOCK MAP# 070550 TOTAL EDU'S 0 TOTAL ACREAGE 31.66	
TOTAL LINEAR FOOTAGE OF PIPE 16"=12,346 LF PLAT NO. N/A	
NUMBER OF LOTS 0	SAWS JOB NO. 25-1051



PROJECT LIMITS

EXISTING WATER

EXISTING SEWER

PROPOSED SEWER

PROPOSED WATER

PROPOSED FEMA 1% ANNUAL CHANCE (100-YR) FLOODPLAIN

The diagram illustrates the 100-year floodplain with various infrastructure elements. A thick black line at the top represents the 'PROJECT LIMITS'. Below it, a dashed line indicates 'EXISTING WATER'. A solid line represents 'EXISTING SEWER', with a 'MANHOLE' marked by a circle. A solid line represents 'PROPOSED SEWER'. A solid line at the bottom represents 'PROPOSED WATER'. Two 'FIRE HYDRANT' symbols (crosses with dots) are shown, one on the existing water line and one on the proposed water line. The area below the proposed water line is labeled 'PROPOSED FEMA 1% ANNUAL CHANCE (100-YR) FLOODPLAIN'.

WATER (SAWS PRESSURE ZONE 930)	
DEVELOPER'S NAME: <u>KB HOME LONE STAR, INC.</u>	
ADDRESS: <u>4800 FREDERICKSBURG RD. STE. 100</u>	
CITY: <u>SAN ANTONIO</u>	STATE: <u>TEXAS</u> ZIP: <u>78229</u>
PHONE: <u>210-301-5485</u>	EMAIL: _____
SAWS BLOCK MAP# <u>0270550</u> TOTAL EDU'S <u>0</u> TOTAL ACREAGE <u>31.66</u>	
TOTAL LINEAR FOOTAGE OF PIPE: <u>16"=12.346'</u> FLAT NO. <u>N/A</u>	
NUMBER OF LOTS <u>0</u>	SAWS JOB NO. <u>25-1051</u>

ESPINO TRACT 16-INCH OFFSITE WATER (OVERSIZED)  
SAN ANTONIO, TEXAS  
OVERALL UTILITY PLAN

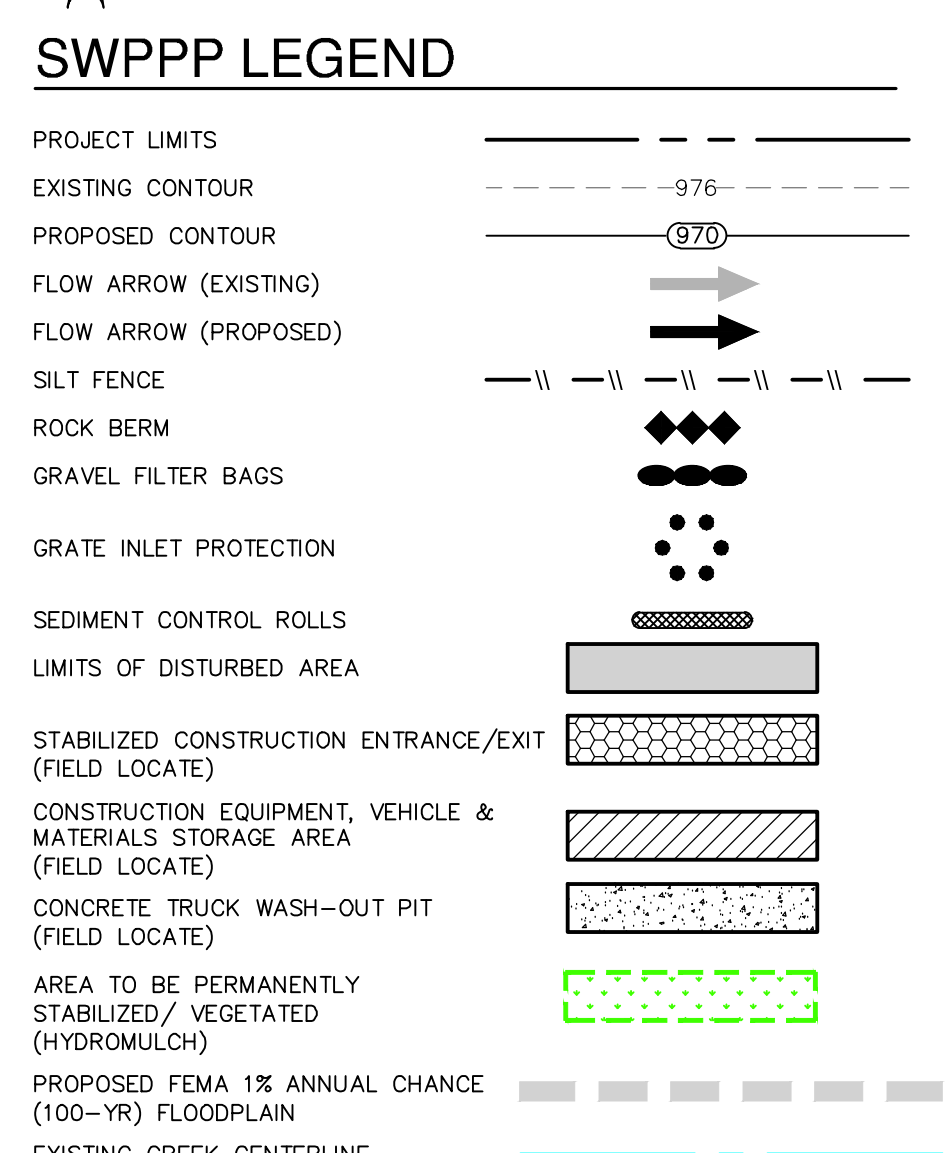
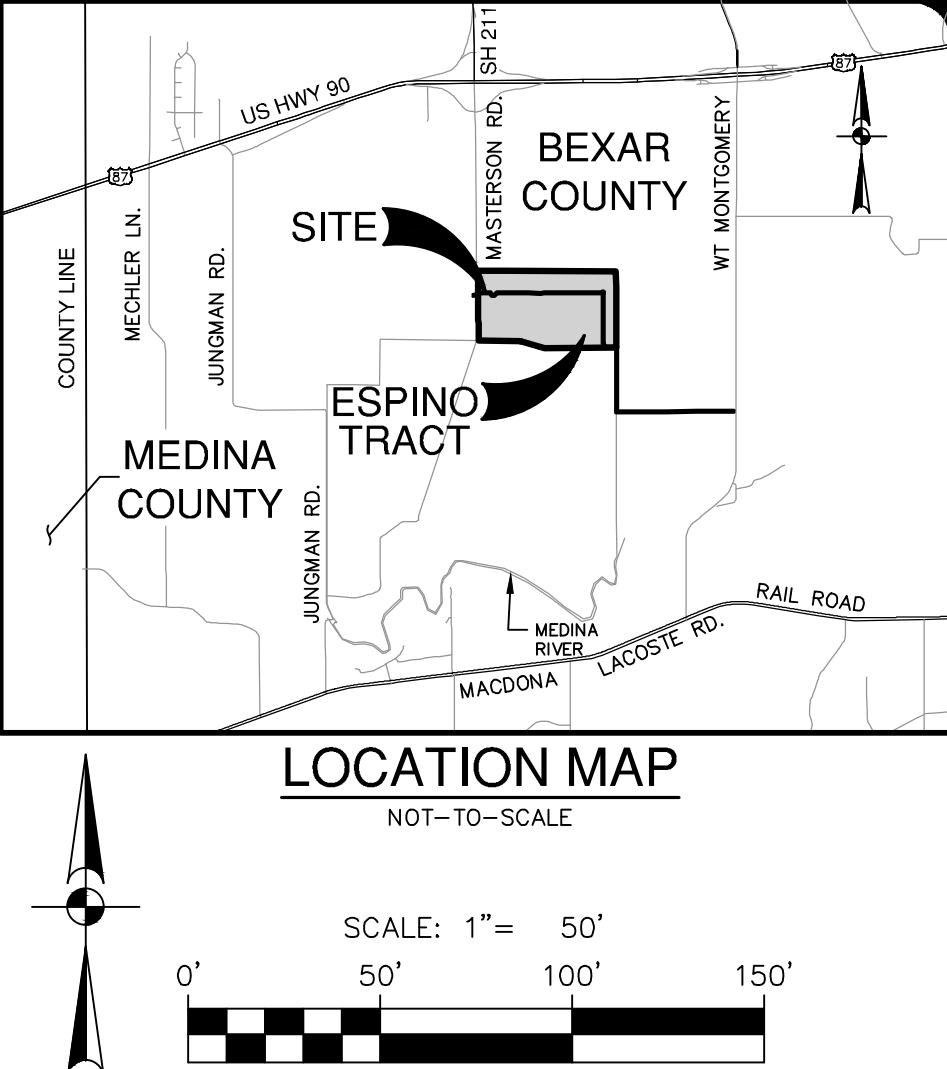
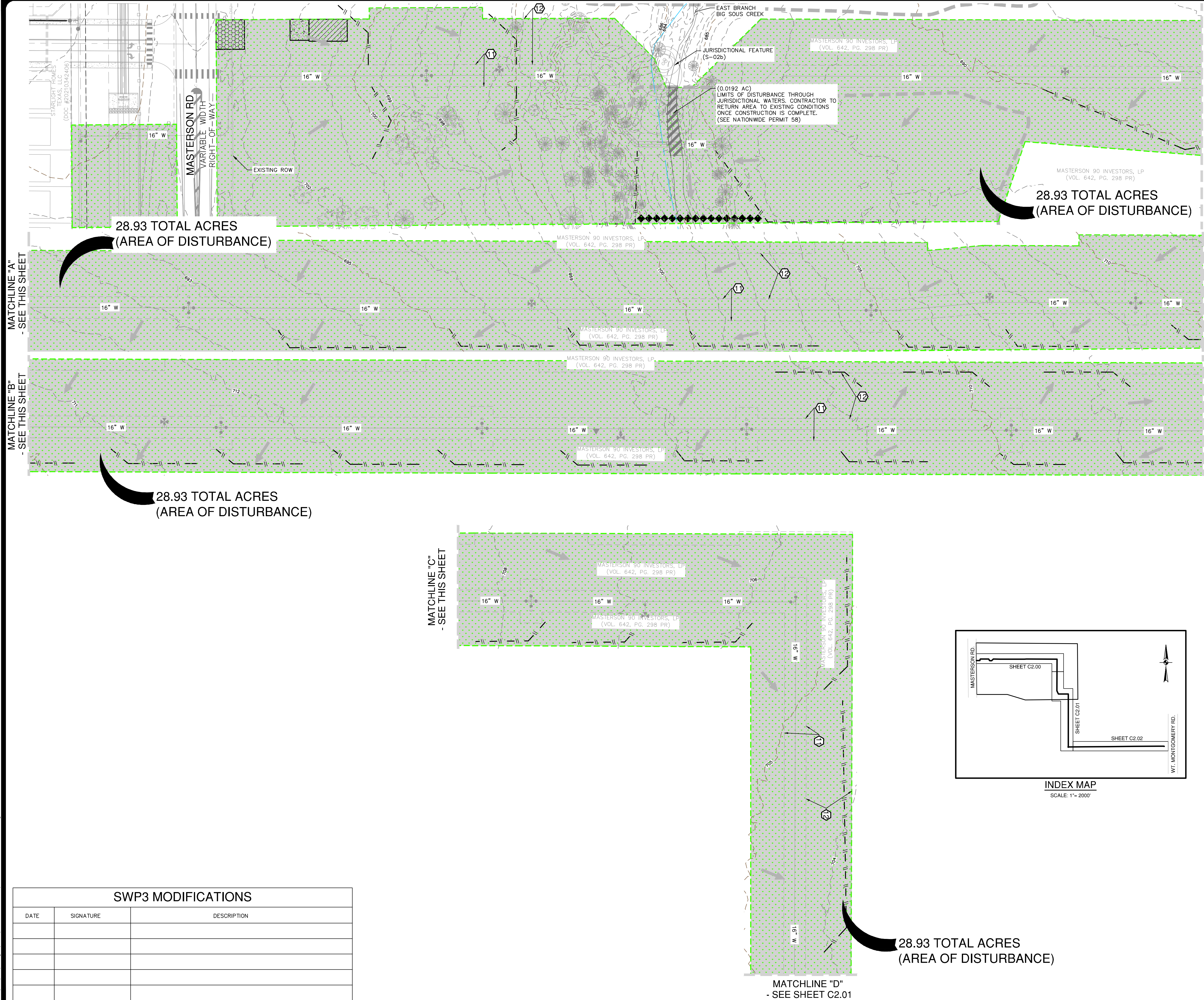
PLAT NO. N/A  
JOB NO. 13240-04  
DATE JULY 2025  
DESIGNER TC  
CHECKED DVS/DW DRAWN JV  
SHEET C1.00

THIS DOCUMENT HAS BEEN PRODUCED FROM MATERIAL THAT WAS STORED AND/OR TRANSMITTED ELECTRONICALLY AND MAY HAVE BEEN INADVERTENTLY ALTERED. RELY ONLY ON FINAL HARDCOPY MATERIALS BEARING THE CONSULTANT'S ORIGINAL SIGNATURE AND SEAL. AERIAL IMAGERY PROVIDED BY GOOGLE+ UNLESS OTHERWISE NOTED. Imagery © 2016 CAPCO Digital Globe, Texas OrthoImagery Program, USDA Farm Service Agency



Dates: Jul 24, 2025, 3:58pm, User ID: rnsdfrjgldpss  
File: P:\124\124000\Design\Civil\Off-site\Water\SWP3-C2W-1324000.dwg

SWP3 MODIFICATIONS		
DATE	SIGNATURE	DESCRIPTION



DATE	
NO.	
REVISION	

**PAPE-DAWSON ENGINEERS**  
2000 HW LOOP 410 | SAN ANTONIO, TX 78213 | 210.375.9000  
TEXAS ENGINEERING FIRM #470 | TEXAS SURVEYING FIRM #1008800

**ESPINO TRACT 16-INCH OFFSITE WATER (OVERSIZED) SAN ANTONIO, TEXAS**  
**STORM WATER POLLUTION PREVENTION PLAN**

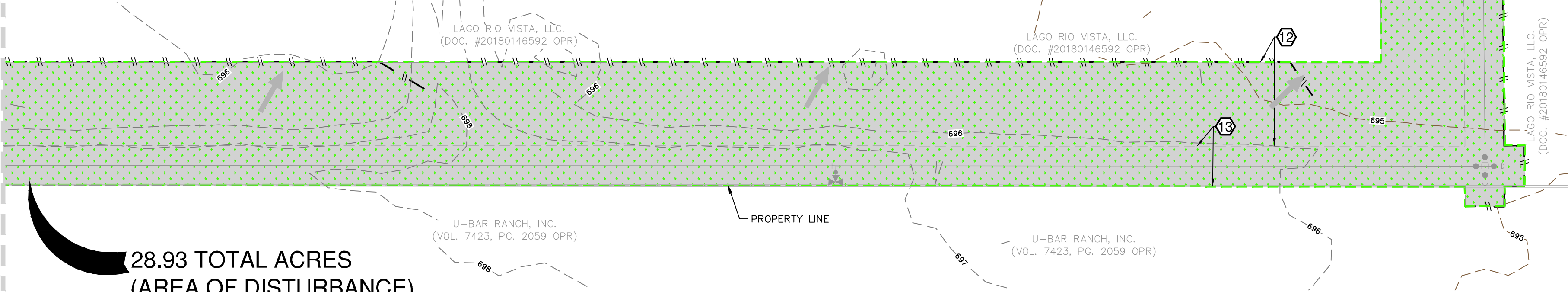
PLAT NO.	N/A
JOB NO.	13240-04
DATE	JULY 2025
DESIGNER	TC
CHECKED/DW/DRAWN	JV
SHEET	C2.00



Notes: Jul 24, 2025, 4:00pm, User ID: notafic@pape.com  
File: P:\124\4000\Design\Civil\Site\Site\SWP3-C2W-1324000.dwg

THIS DOCUMENT HAS BEEN PRODUCED FROM MATERIAL THAT WAS STORED AND/OR TRANSMITTED ELECTRONICALLY AND MAY HAVE BEEN INADVERTENTLY ALTERED. RELY ONLY ON FINAL HARDCOPY MATERIALS BEARING THE CONSULTANT'S ORIGINAL SIGNATURE AND SEAL. AERIAL IMAGERY PROVIDED BY GOOGLE/US UNLESS OTHERWISE NOTED. Imagery © 2016/CAPCO/Digital Globe/Texas Orthomography Program, USDA Farm Service Agency.

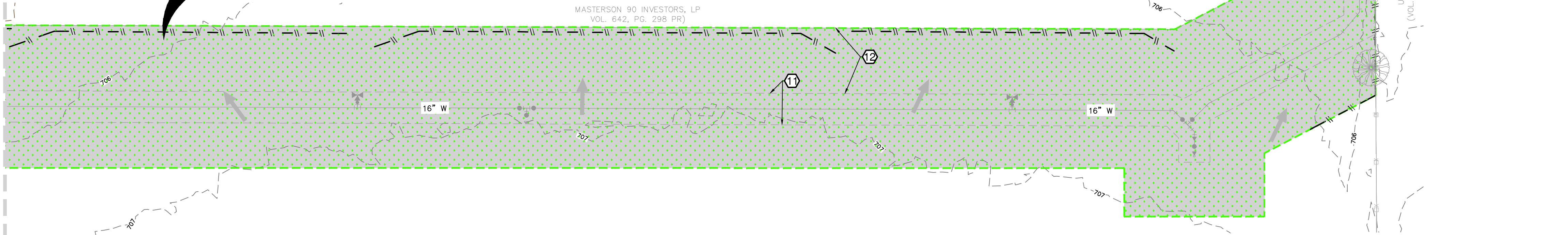
MATCHLINE "G" - SEE THIS SHEET



28.93 TOTAL ACRES  
(AREA OF DISTURBANCE)

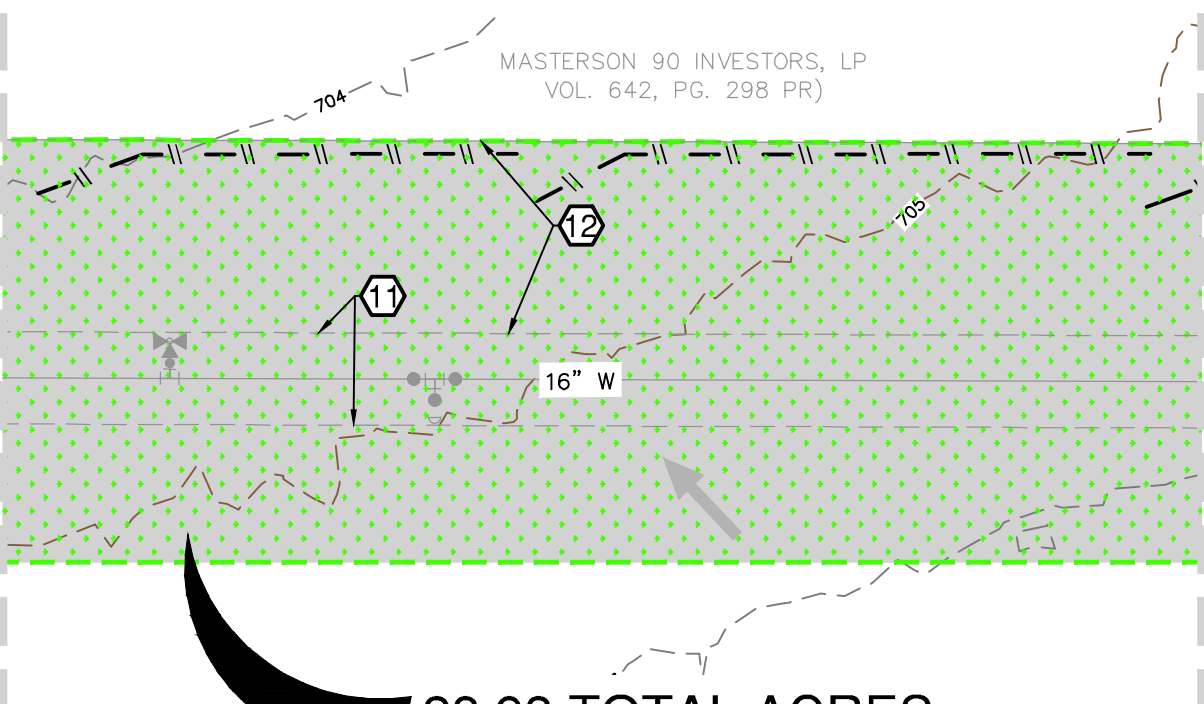
MATCHLINE "H" - SEE SHEET C2.02

MATCHLINE "E" - SEE THIS SHEET



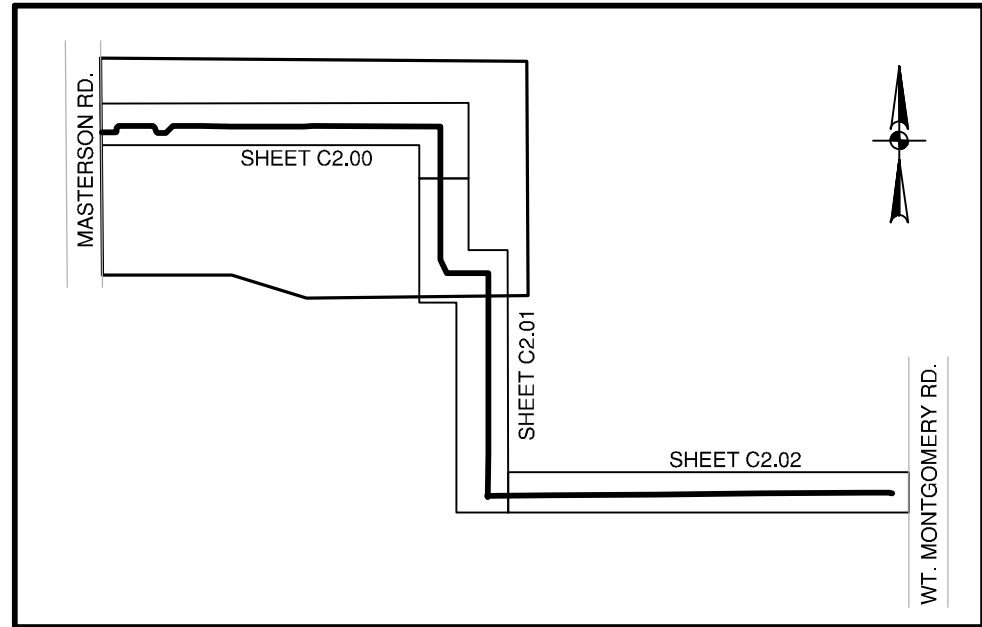
28.93 TOTAL ACRES  
(AREA OF DISTURBANCE)

MATCHLINE "D" - SEE SHEET C2.00

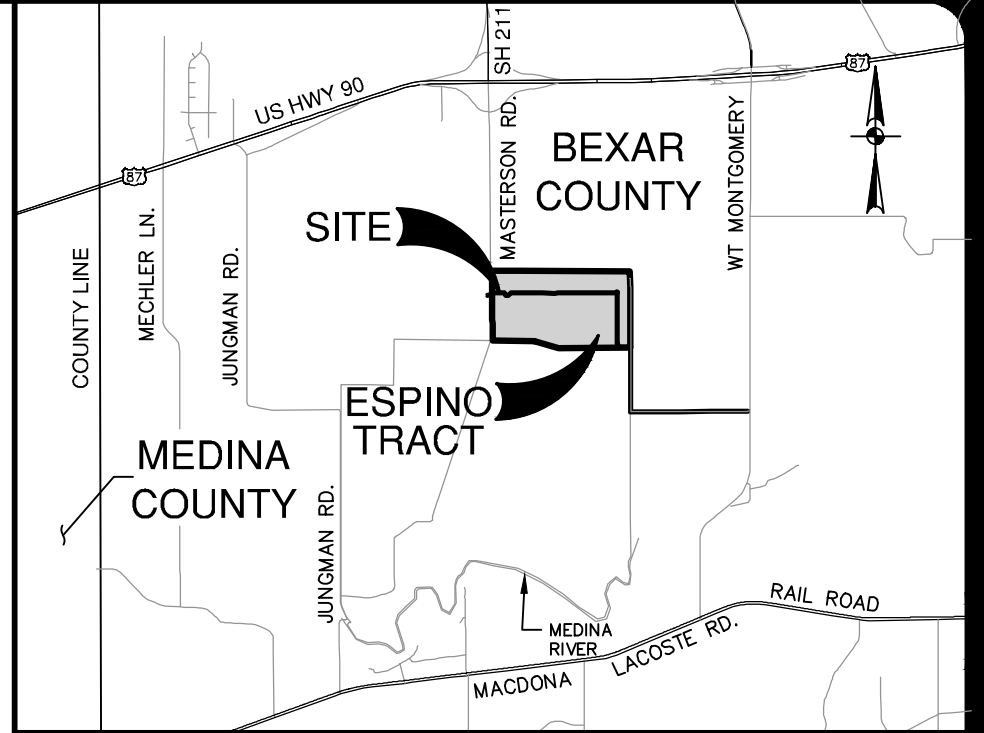


28.93 TOTAL ACRES  
(AREA OF DISTURBANCE)

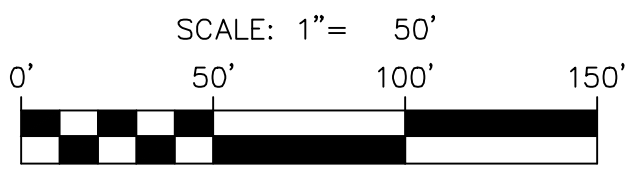
MATCHLINE "E" - SEE THIS SHEET



INDEX MAP  
SCALE: 1"= 2000'



LOCATION MAP  
NOT-TO-SCALE



### SWPPP LEGEND

- PROJECT LIMITS  
EXISTING CONTOUR  
PROPOSED CONTOUR  
FLOW ARROW (EXISTING)  
FLOW ARROW (PROPOSED)  
SILT FENCE  
ROCK BERM  
GRAVEL FILTER BAGS  
GRATE INLET PROTECTION  
SEDIMENT CONTROL ROLLS  
LIMITS OF DISTURBED AREA  
STABILIZED CONSTRUCTION ENTRANCE/EXIT (FIELD LOCATE)  
CONSTRUCTION EQUIPMENT, VEHICLE & MATERIALS STORAGE AREA (FIELD LOCATE)  
CONCRETE TRUCK WASH-OUT PIT (FIELD LOCATE)  
AREA TO BE PERMANENTLY STABILIZED/VEGETATED (HYDROMULCH)  
PROPOSED FEMA 1% ANNUAL CHANCE (100-YR) FLOODPLAIN  
EXISTING CREEK CENTERLINE  
11 24' WATER EASEMENT  
12 50' TEMPORARY CONSTRUCTION EASEMENT  
13 24' WATER EASEMENT PARCEL ID#192408, DOCHP25-086

### GENERAL NOTES

- DO NOT DISTURB VEGETATED AREAS (TREES, GRASS, WEEDS, BRUSH, ETC.) ANY MORE THAN NECESSARY FOR CONSTRUCTION.
- CONSTRUCTION ENTRANCE/EXIT LOCATION, CONCRETE WASH-OUT PIT, AND CONSTRUCTION EQUIPMENT AND MATERIAL STORAGE YARD TO BE DETERMINED IN THE FIELD.
- STORM WATER POLLUTION PREVENTION CONTROLS MAY NEED TO BE MODIFIED IN THE FIELD TO ACCOMPLISH THE DESIRED EFFECT. ALL MODIFICATIONS ARE TO BE NOTED ON THIS EXHIBIT AND SIGNED AND DATED BY THE RESPONSIBLE PARTY.
- RESTRICT ENTRY/EXIT TO THE PROJECT SITE TO DESIGNATED LOCATIONS BY USE OF ADEQUATE FENCING, IF NECESSARY.
- ALL STORM WATER POLLUTION PREVENTION CONTROLS ARE TO BE MAINTAINED AND IN WORKING CONDITIONS AT ALL TIMES.
- FOR A COMPLETE LISTING OF TEMPORARY STORM WATER POLLUTION PREVENTION CONTROLS REFER TO THE TPDES STORM WATER POLLUTION PREVENTION PLAN.
- STORM WATER POLLUTION PREVENTION STRUCTURES SHOULD BE CONSTRUCTED WITHIN THE SITE BOUNDARIES. SOME OF THESE FEATURES MAY BE SHOWN OUTSIDE THE SITE BOUNDARIES ON THIS PLAN FOR VISUAL CLARITY.
- AS SOON AS PRACTICAL, ALL DISTURBED SOIL THAT WILL NOT BE COVERED BY IMPERVIOUS COVER SUCH AS PARKWAY AREAS, EASEMENT AREAS, EMBANKMENT SLOPES, ETC. WILL BE STABILIZED PER APPLICABLE PROJECT SPECIFICATIONS.
- BEST MANAGEMENT PRACTICES MAY BE INSTALLED IN STAGES TO COINCIDE WITH THE DISTURBANCE OF UPGRADE AREAS.
- BEST MANAGEMENT PRACTICES MAY BE REMOVED IN STAGES ONCE THE WATERSHED FOR THAT PORTION CONTROLLED BY THE BEST MANAGEMENT PRACTICES HAS BEEN STABILIZED IN ACCORDANCE WITH TPDES REQUIREMENTS.
- UPON COMPLETION OF THE PROJECT, INCLUDING SITE STABILIZATION, AND BEFORE FINAL PAYMENT IS ISSUED, CONTRACTOR SHALL REMOVE ALL SEDIMENT AND EROSION CONTROL MEASURES, PAYING SPECIAL ATTENTION TO ROCK BERMS IN DRAINAGE FEATURES.
- WHERE VEGETATED FILTER STRIPS ARE INDICATED, CONTRACTOR SHALL VERIFY THAT SUFFICIENT VEGETATION EXISTS. OTHERWISE CONTRACTOR SHALL PLACE SILT FENCING IN LIEU OF VEGETATED FILTER STRIP.
- SHADED AREA DENOTES LIMITS OF DISTURBED AREAS. OTHER AREAS WITHIN THE PROJECT LIMITS, WITH THE EXCEPTION OF A CONSTRUCTION EQUIPMENT AND MATERIAL STORAGE YARD, ARE NOT A PART OF THIS TPDES STORM WATER POLLUTION PREVENTION PLAN (SWP3) AND WILL NOT BE DISTURBED BY CIVIL CONSTRUCTION ACTIVITIES. HOUSE CONSTRUCTION ACTIVITIES WILL REQUIRE A SEPARATE STORM WATER POLLUTION PREVENTION PLAN.

THE ENGINEERING SEAL HAS BEEN AFFIXED TO THIS SHEET ONLY FOR THE PURPOSE OF DEMONSTRATING COMPLIANCE WITH THE TPDES-STORM WATER POLLUTION PREVENTION PLAN (SWP3) REGULATIONS.

THIS SHEET HAS BEEN PREPARED FOR PURPOSES OF THE SWP3 ONLY. ALL OTHER CIVIL ENGINEERING RELATED INFORMATION SHOULD BE ACQUIRED FROM THE APPROPRIATE SHEET IN THE CIVIL IMPROVEMENT PLANS.

EXHIBIT 2B

SWP3 MODIFICATIONS		
DATE	SIGNATURE	DESCRIPTION

ESPINO TRACT 16-INCH OFFSITE WATER (OVERSIZED)

SAN ANTONIO, TEXAS

STORM WATER POLLUTION PREVENTION PLAN

**PAPE-DAWSON**  
**ENGINEERS**

2000 HW LOOP 410 | SAN ANTONIO, TX 78213 | 210.375.9000  
TEXAS ENGINEERING FIRM #470 | TEXAS SURVEYING FIRM #1008800



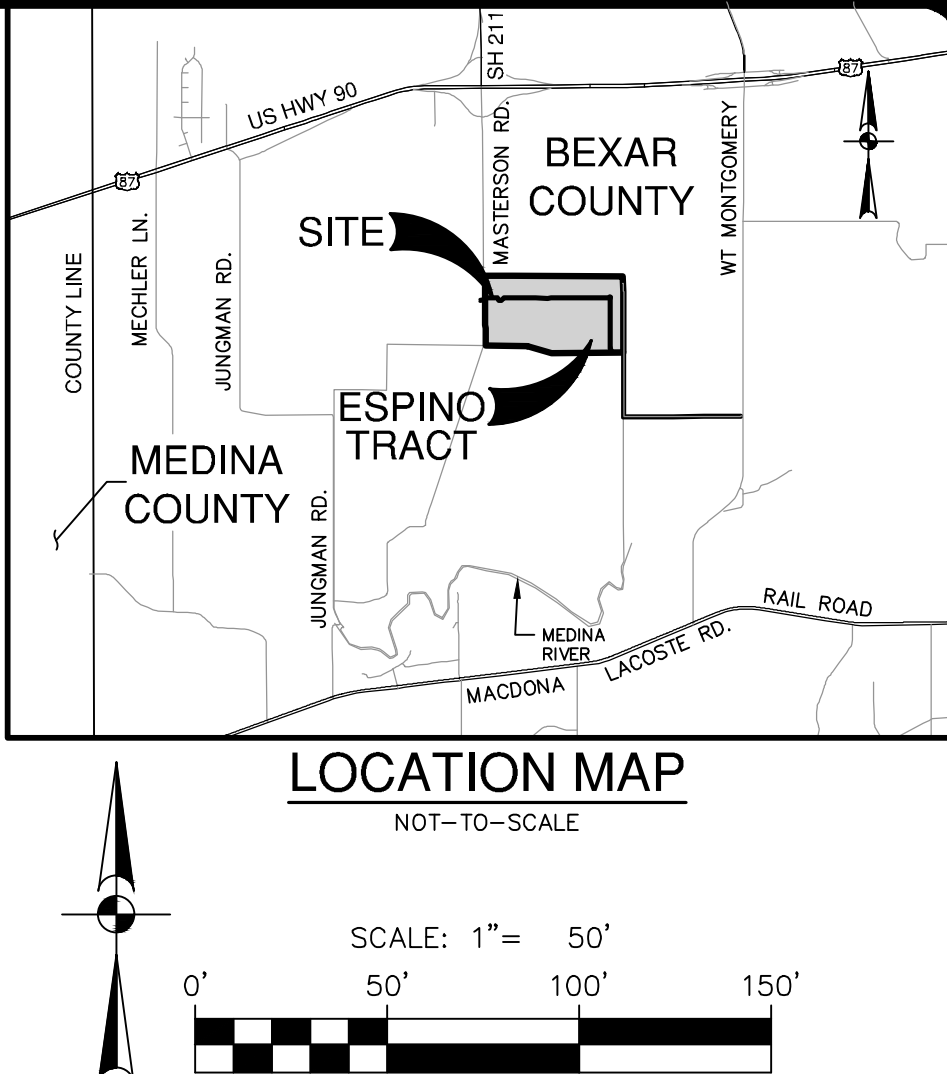
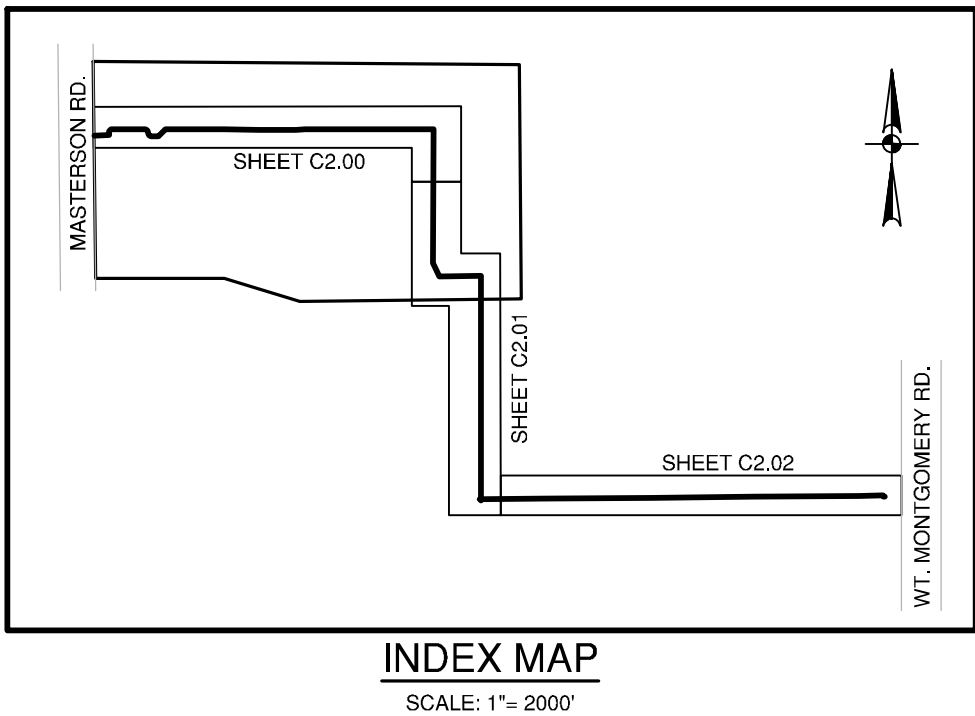
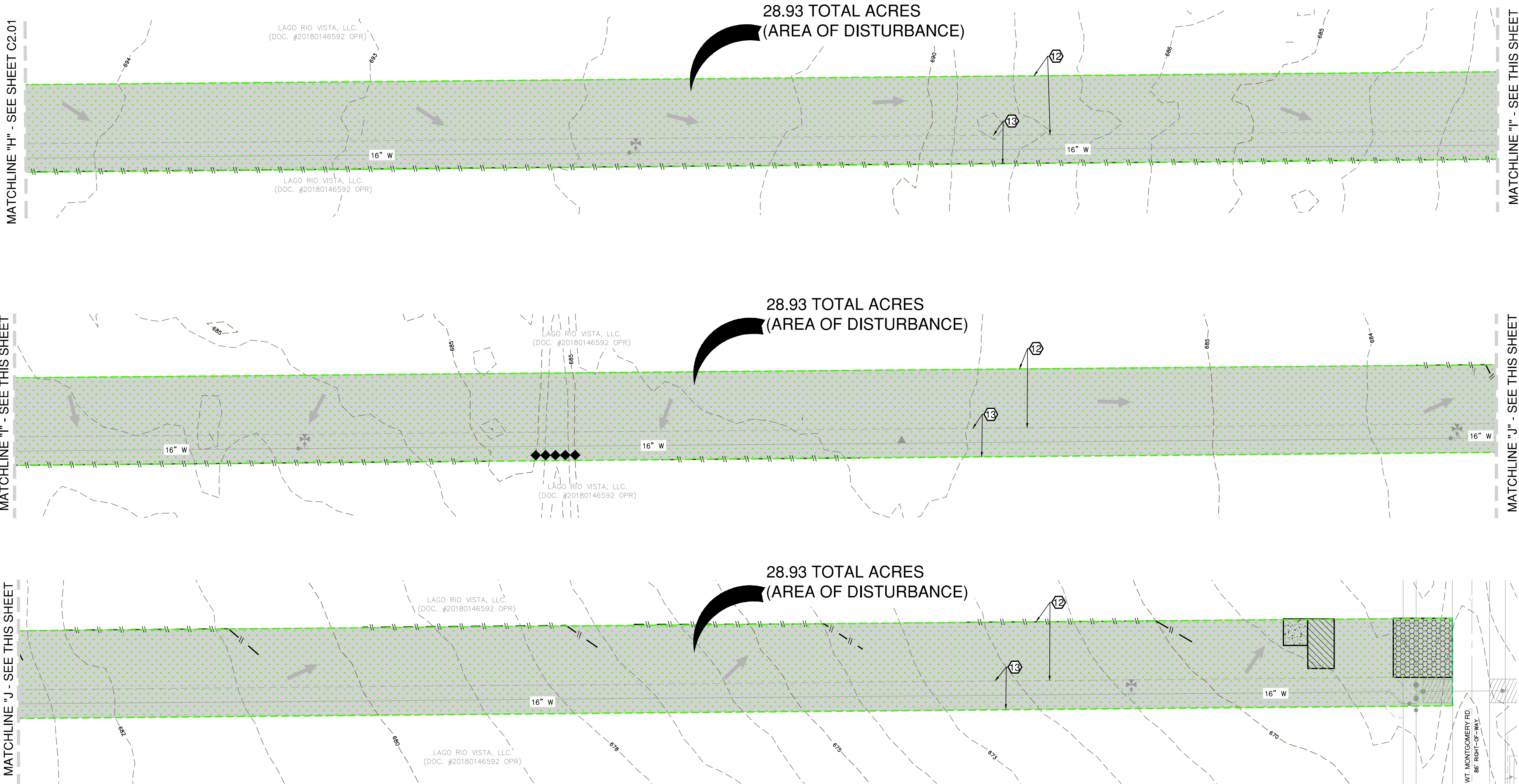
NO.	REVISION	DATE

PLAT NO.	N/A
JOB NO.	13240-04
DATE	JULY 2025
DESIGNER	TC
CHECKED/S/DW/DRAWN	JV
SHEET	C2.01

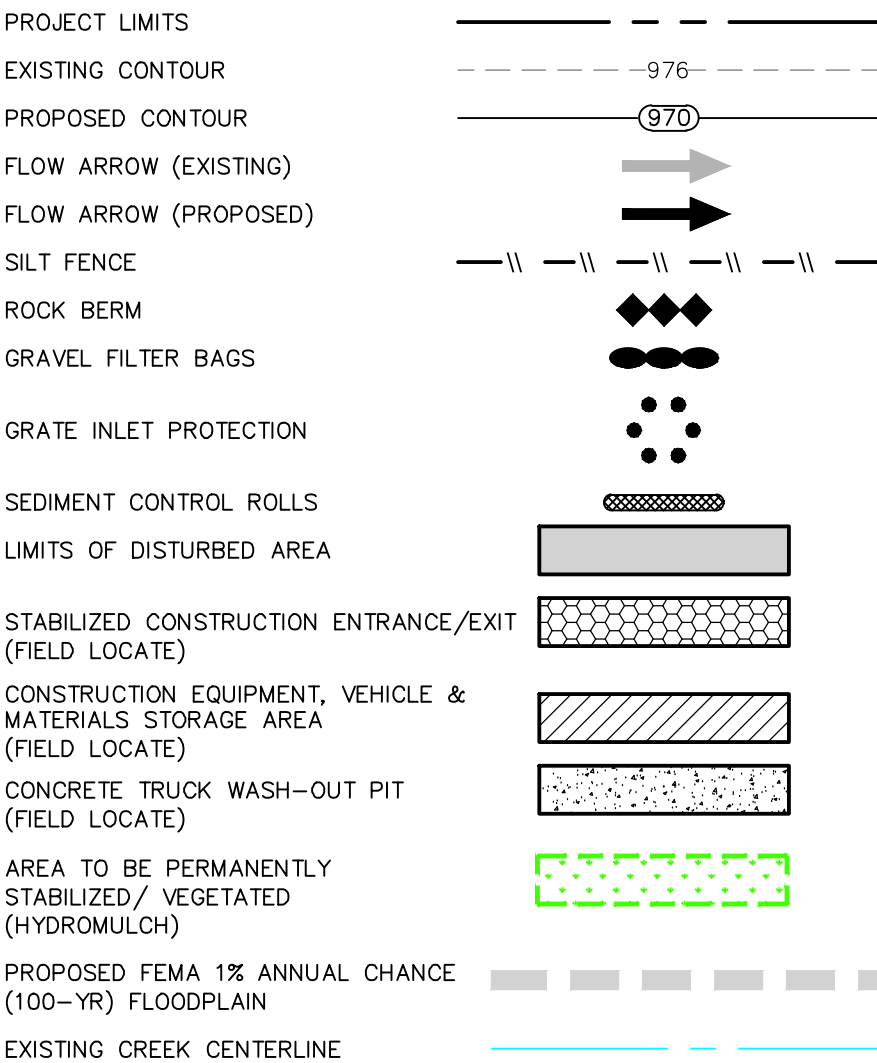


Dates: Jul 24, 2025 - 4:02pm User ID: rnsaficjgldpge  
File: P:\1324000\Design\Civil\Off-site\Water\SWP3-C2W-1324000.dwg

THIS DOCUMENT HAS BEEN PRODUCED FROM MATERIAL THAT WAS STORED AND/OR TRANSMITTED ELECTRONICALLY AND MAY HAVE BEEN INADVERTENTLY ALTERED. RELY ONLY ON FINAL HARDCOPY MATERIALS BEARING THE CONSULTANT'S ORIGINAL SIGNATURE AND SEAL. AERIAL IMAGERY PROVIDED BY GOOGLE/US UNLESS OTHERWISE NOTED. Imagery © 2016/CAPDOCDigital Globe/Teas Orthomography Program, USDA Farm Service Agency.



### SWPPP LEGEND



### GENERAL NOTES

- DO NOT DISTURB VEGETATED AREAS (TREES, GRASS, WEEDS, BRUSH, ETC.) ANY MORE THAN NECESSARY FOR CONSTRUCTION.
- CONSTRUCTION ENTRANCE/EXIT LOCATION, CONCRETE WASH-OUT PIT, AND CONSTRUCTION EQUIPMENT AND MATERIAL STORAGE YARD TO BE DETERMINED IN THE FIELD.
- STORM WATER POLLUTION PREVENTION CONTROLS MAY NEED TO BE MODIFIED IN THE FIELD TO ACCOMPLISH THE DESIRED EFFECT. ALL MODIFICATIONS ARE TO BE NOTED ON THIS EXHIBIT AND SIGNED AND DATED BY THE RESPONSIBLE PARTY.
- RESTRICT ENTRY/EXIT TO THE PROJECT SITE TO DESIGNATED LOCATIONS BY USE OF ADEQUATE FENCING, IF NECESSARY.
- ALL STORM WATER POLLUTION PREVENTION CONTROLS ARE TO BE MAINTAINED AND IN WORKING CONDITIONS AT ALL TIMES.
- FOR A COMPLETE LISTING OF TEMPORARY STORM WATER POLLUTION PREVENTION CONTROLS REFER TO THE TPDES STORM WATER POLLUTION PREVENTION PLAN.
- STORM WATER POLLUTION PREVENTION STRUCTURES SHOULD BE CONSTRUCTED WITHIN THE SITE BOUNDARIES. SOME OF THESE FEATURES MAY BE SHOWN OUTSIDE THE SITE BOUNDARIES ON THIS PLAN FOR VISUAL CLARITY.
- AS SOON AS PRACTICAL, ALL DISTURBED SOIL THAT WILL NOT BE COVERED BY IMPERVIOUS COVER SUCH AS PARKWAY AREAS, EASEMENT AREAS, EMBANKMENT SLOPES, ETC. WILL BE STABILIZED PER APPLICABLE PROJECT SPECIFICATIONS.
- BEST MANAGEMENT PRACTICES MAY BE INSTALLED IN STAGES TO COINCIDE WITH THE DISTURBANCE OF UPGRADE AREAS.
- BEST MANAGEMENT PRACTICES MAY BE REMOVED IN STAGES ONCE THE WATERSHED FOR THAT PORTION CONTROLLED BY THE BEST MANAGEMENT PRACTICES HAS BEEN STABILIZED IN ACCORDANCE WITH TPDES REQUIREMENTS.
- UPON COMPLETION OF THE PROJECT, INCLUDING SITE STABILIZATION, AND BEFORE FINAL PAYMENT IS ISSUED, CONTRACTOR SHALL REMOVE ALL SEDIMENT AND EROSION CONTROL MEASURES, PAYING SPECIAL ATTENTION TO ROCK BERMS IN DRAINAGE FEATURES.
- WHERE VEGETATED FILTER STRIPS ARE INDICATED, CONTRACTOR SHALL VERIFY THAT SUFFICIENT VEGETATION EXISTS, OTHERWISE CONTRACTOR SHALL PLACE SILT FENCING IN LIEU OF VEGETATED FILTER STRIP.
- SHADED AREA DENOTES LIMITS OF DISTURBED AREAS. OTHER AREAS WITHIN THE PROJECT LIMITS, WITH THE EXCEPTION OF A CONSTRUCTION EQUIPMENT AND MATERIAL STORAGE YARD, ARE NOT A PART OF THIS TPDES STORM WATER POLLUTION PREVENTION PLAN (SWP3) AND WILL NOT BE DISTURBED BY CIVIL CONSTRUCTION ACTIVITIES. HOUSE CONSTRUCTION ACTIVITIES WILL REQUIRE A SEPARATE STORM WATER POLLUTION PREVENTION PLAN.

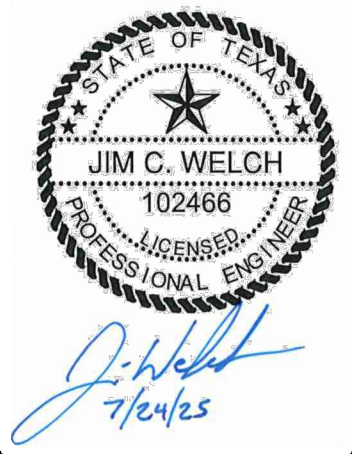
THE ENGINEERING SEAL HAS BEEN AFFIXED TO THIS SHEET ONLY FOR THE PURPOSE OF DEMONSTRATING COMPLIANCE WITH THE TPDES-STORM WATER POLLUTION PREVENTION PLAN (SWP3) REGULATIONS.

THIS SHEET HAS BEEN PREPARED FOR PURPOSES OF THE SWP3 ONLY. ALL OTHER CIVIL ENGINEERING RELATED INFORMATION SHOULD BE ACQUIRED FROM THE APPROPRIATE SHEET IN THE CIVIL IMPROVEMENT PLANS.

EXHIBIT 2C

SWP3 MODIFICATIONS		
DATE	SIGNATURE	DESCRIPTION

NO.	REVISION	DATE

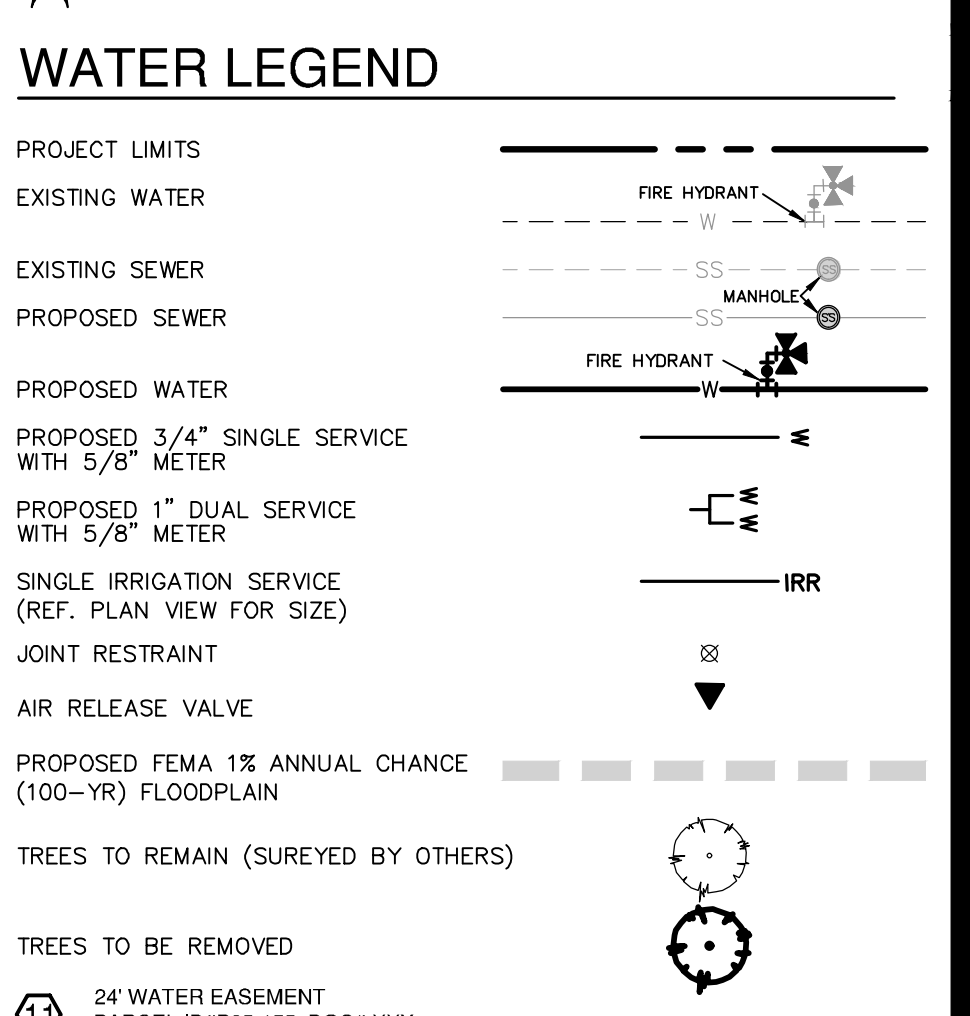
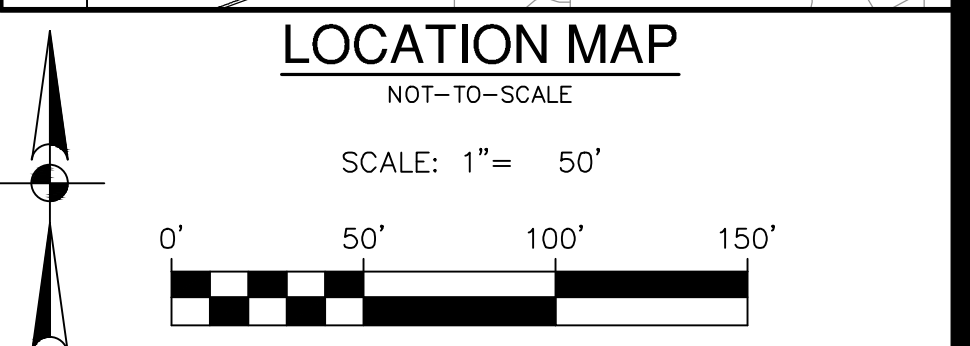
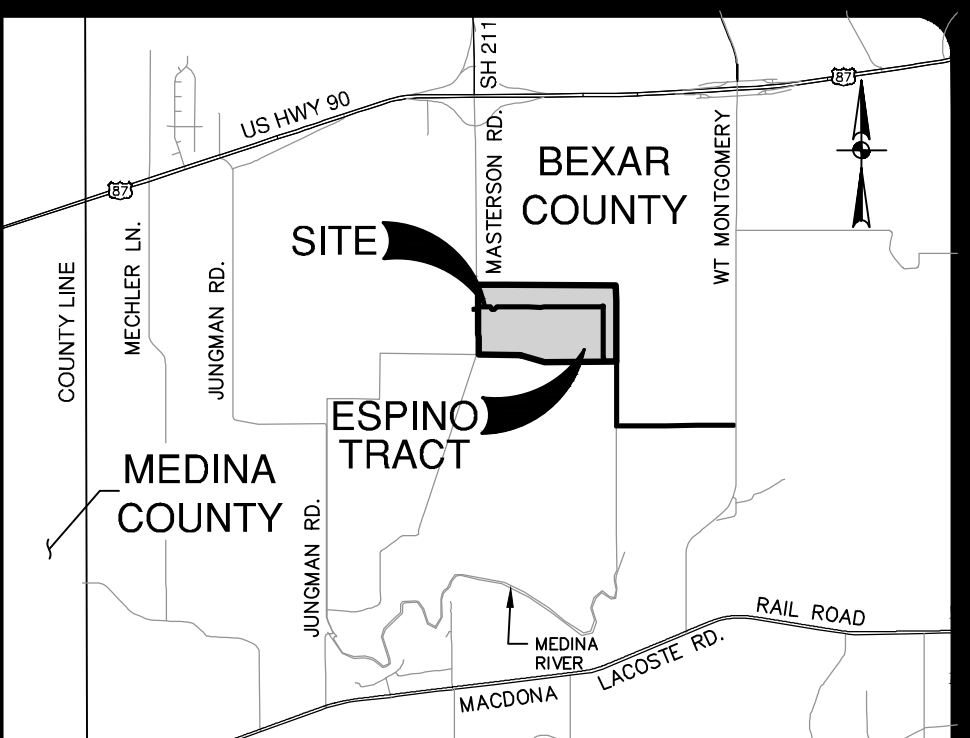


**PAPE-DAWSON ENGINEERS**  
2000 NW LOOP 410 | SAN ANTONIO, TX 78213 | 210.375.9000  
TEXAS ENGINEERING FIRM #470 | TEXAS SURVEYING FIRM #1008800

**ESPINO TRACT 16-INCH OFFSITE WATER (OVERSIZED)**  
SAN ANTONIO, TEXAS  
**STORM WATER POLLUTION PREVENTION PLAN**

PLAT NO.	N/A
JOB NO.	13240-04
DATE	JULY 2025
DESIGNER	TC
CHECKED/S/DW/DRAWN	JV
SHEET	C2.02





FIRE FLOW NOTE:

IN AN EFFORT TO MEET THE CITY OF SAN ANTONIO'S FIRE FLOW REQUIREMENTS FOR THE PROPOSED RESIDENTIAL DEVELOPMENT, THE PUBLIC WATER MAIN SYSTEM HAS BEEN DESIGNED FOR A MINIMUM FIRE FLOW DEMAND OF 1500 GPM AT 25 PSI RESIDUAL PRESSURE. THE FIRE FLOW REQUIREMENTS FOR INDIVIDUAL STRUCTURES WILL BE REVIEWED DURING THE BUILDING PERMIT PROCESS IN ACCORDANCE WITH THE PROCEDURES SET FORTH BY THE CITY OF SAN ANTONIO DIRECTOR OF DEVELOPMENT SERVICES DEPARTMENT AND THE SAN ANTONIO FIRE DEPARTMENT FIRE MARSHAL.

BOW PERMIT NOTE:

**ROW PERMIT NOTE:**  
A BEXAR COUNTY PERMIT MUST BE OBTAINED BEFORE WORKING IN BEXAR COUNTY RIGHTS-OF-WAY

**PRESSURE REDUCING VALVE NOTE:**

**PRESSURE REDUCING VALVE NOTE:**  
PRESSURE REDUCING VALVE TO BE INSTALLED ON CUSTOMER'S SIDE OF  
METER BY HOMEOWNER.

**PRESSURE NOTE:**

**PRESSURE NOTE:**

CONTRACTOR TO VERIFY THAT NO PORTION OF THE TRACT IS BELOW GROUND ELEVATION OF 745 FEET WHERE THE STATIC PRESSURE WILL NORMALLY EXCEED 80 PSI. AT ALL SUCH LOCATIONS WHERE THE GROUND LEVEL IS BELOW 745 FEET, THE DEVELOPER OR BUILDER SHALL INSTALL AT EACH LOT, ON THE CUSTOMER'S SIDE OF THE METER, AN APPROVED TYPE PRESSURE REGULATOR IN CONFORMANCE WITH THE PLUMBING CODE OF THE CITY OF SAN ANTONIO. NO DUAL SERVICES ALLOWED FOR ANY LOT(S) IF \*PRV IS/ARE REQUIRED FOR SUCH LOT(S), ONLY SINGLE SERVICE CONNECTIONS SHALL BE ALLOWED.

\*NOTE: A PRESSURE REGULATOR IS A REDUCING VALVE (PRV).

**JOINT RESTRAINT NOTE:**

CONTRACTOR SHALL INSTALL RETAINER GLANDS ON ALL FITTINGS AND PROVIDE JOINT RESTRAINING HARNESSSES OR FIELD LOCK GASKETS AT ALL JOINTS WITHIN THE LENGTH SHOWN. CONTRACTOR SHALL INSURE THAT ALL TEES, BENDS, VALVES, ETC. HAVE A MINIMUM OF 5 FT OF PIPE WITH NO JOINTS ON EACH SIDE OF THE FITTING. JOINT RESTRAINTS AND RETAINER GLANDS SHALL BE CALCULATED BY SAWS APPROVED PROGRAMS. THERE WILL BE NO SEPARATE PAY ITEM FOR RETAINER GLANDS AND OTHER JOINT RESTRAINING HARNESSSES AND GASKETS, BUT SHALL BE SUBSIDIARY TO THE

**TRENCH EXCAVATION SAFETY PROTECTION:**

CONTRACTOR AND/OR CONTRACTOR'S INDEPENDENTLY RETAINED EMPLOYEE SHALL BE RESPONSIBLE FOR DEVELOPING AND IMPLEMENTING ALL SAFETY PROGRAMS AND PROCEDURES. CONTRACTOR SHALL REVIEW AND APPROVE ALL SAFETY PLANS AND PROCEDURES. IF ANY, SHALL REVIEW THESE PLANS AND ANY AVAILABLE GEOTECHNICAL INFORMATION AND THE ANTICIPATED INSTALLATION SITES WITHIN THE PROJECT WORK AREA IN ORDER TO IMPLEMENT CONTRACTOR'S TRENCH EXCAVATION SAFETY PROGRAMS AND PROCEDURES. CONTRACTOR SHALL REVIEW AND APPROVE ALL SAFETY PLANS AND PROCEDURES FOR THE PROJECT DESCRIBED IN THE CONTRACT DOCUMENTS. CONTRACTOR SHALL BE RESPONSIBLE FOR THE DESIGN, DEVELOPMENT, AND IMPLEMENTATION OF THE TRENCH EXCAVATION SAFETY PROGRAMS AND PROCEDURES. CONTRACTOR SHALL BE RESPONSIBLE FOR THE TRENCH EXCAVATIONS, SPECIFICALLY, CONTRACTOR AND/OR CONTRACTOR'S INDEPENDENTLY RETAINED EMPLOYEE OR SAFETY CONSULTANT SHALL IMPLEMENT A TRENCH SAFETY PROGRAM IN ORDER TO PROTECT THE SAFETY OF THE PROJECT AND THE PROJECT AND ACTIVITIES OF INDIVIDUALS WORKING IN AND AROUND TRENCH EXCAVATION.

WATER (SAWS PRESSURE ZONE 930)

DEVELOPER'S NAME: KB HOMES LONE STAR, INC.  
ADDRESS: 4800 FREDERICKSBURG RD. STE. 100  
CITY: SAN ANTONIO STATE: TEXAS ZIP: 78229  
PHONE# 210-301-5485 EMAIL \_\_\_\_\_  
SAWS BLOCK MAP# 070550 TOTAL EDU'S 191 TOTAL ACREAGE 56.17  
TOTAL LINEAR FOOTAGE OF PIPE XXXX PLAT NO. 25-11800194  
NUMBER OF LOTS 0 SAWS JOB NO. 25-XXXX

[illegible]

**PAPE-DAWSON  
ENGINEERS**

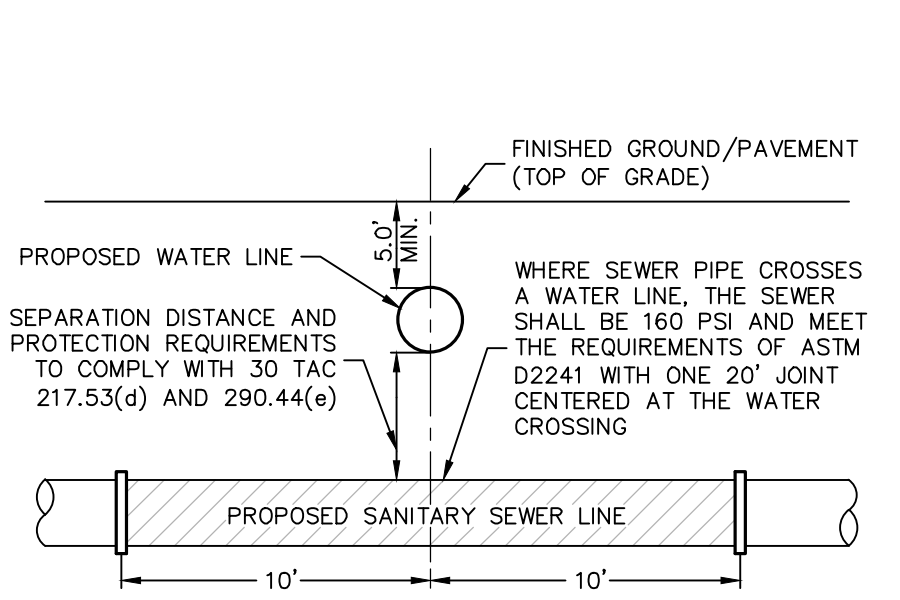
2000 NW LOOP 410 | SAN ANTONIO, TX 78213 | 210.375.9000  
TEXAS ENGINEERING FIRM #470 | TEXAS SURVEYING FIRM #10028800

**ESPINO TRACT 16-INCH OFFSITE WATER (OVERSIZED)**  
SAN ANTONIO, TEXAS

JOHN ANTONIO, TEXAS

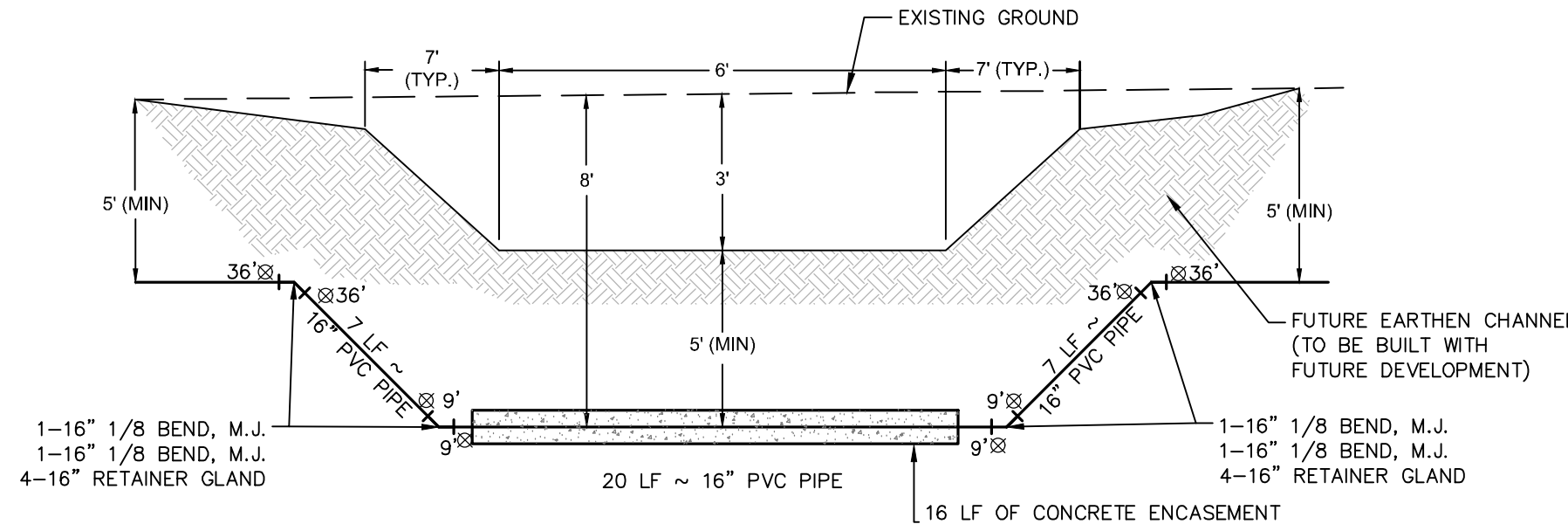
## OVERALL WATER DISTRIBUTION PLAN

PLAT NO. N/A  
JOB NO. 13240-04  
DATE JULY 2025  
DESIGNER TC  
CHECKED DVS/DW DRAWN JV  
SHEET C4.00



(SEE SAWS SPEC ITEM 812)

TYPICAL SANITARY  
SEWER/WATER CROSSING DETAIL



DRAIN/WATER CROSSING DETAIL "A"  
NOT TO SCALE

1 ~ 16" X 6" ANCHOR TEE, MJ  
1 ~ 6" GATE VALVE, MJ  
1 ~ 6" VALVE BOX, COMPLETE  
6" D.I. PIPE, CUT AS REQUIRED  
1 ~ STD. FIRE HYDRANT  
SEE SAWS STD. DWG. DD-834-01  
SEE SHEET C4.10

CONTRACTOR TO TIE INTO EXISTING 24" HDPE MAIN AFTER DISINFECTION AND ACCEPTANCE BY SAWS (JOB #21-1194)

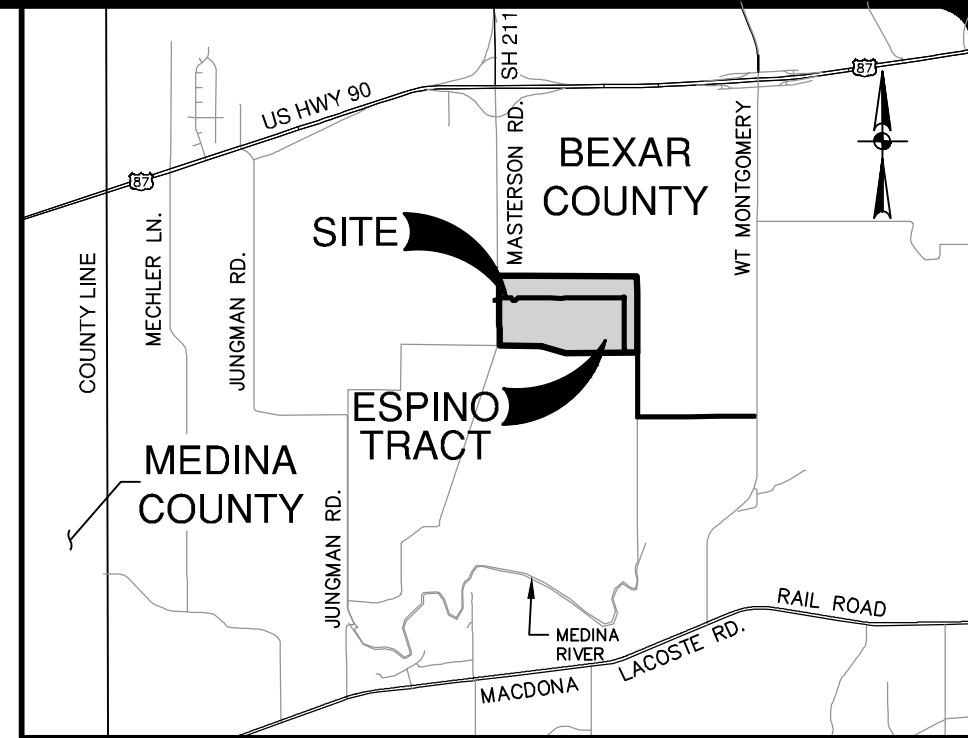
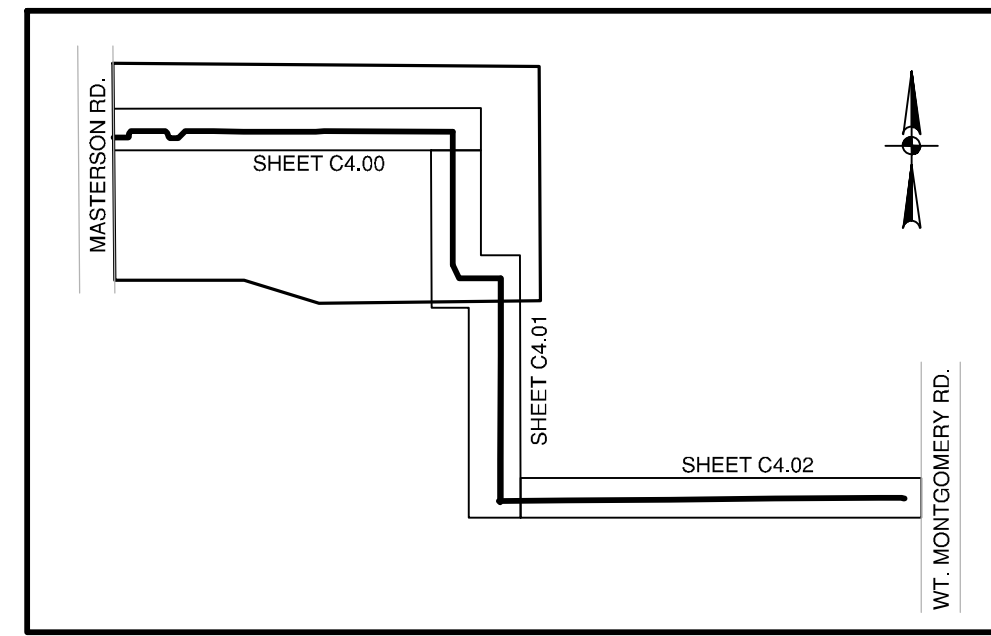
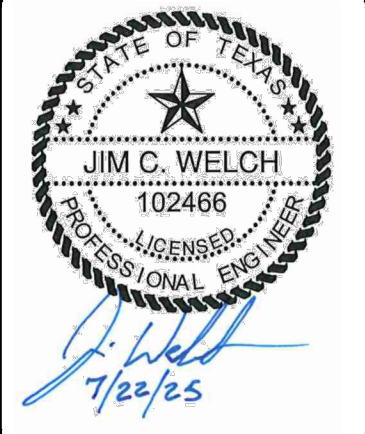
FOR CHLORINATION INJECTION:  
2 ~ 1" CORPORATION STOP, CC X IP  
2 ~ 1" COPPER TUBING, CUT AS REQ'D  
2 ~ 1" COMP. X 1 1/4" COUPLING, CURB STOP  
2 ~ 1 1/2" THD SOLID CAPS, THR

1 ~ 24"x16" CUT IN TEE, MJ  
1 ~ 24" BUTTERFLY VALVE, MJ  
1 ~ 16" GATE VALVE, MJ  
2 ~ 6" VALVE BOX, COMPLETE  
1 ~ 2" TEMP. BLOWOFF ASSEMBLY

1 ~ 16" X 8" ANCHOR CROSS, MJ
2 ~ 16" GATE VALVE, MJ
2 ~ 8" GATE VALVE, MJ
4 ~ 6" VALVE BOX, COMPLETE
2 ~ 8" CAP, MJ

NOTE: CONTRACTOR TO CAP 8" GATE VALVES



[illegible]

**PAPE-DAWSON  
ENGINEERS**

2000 NW LOOP 410 | SAN ANTONIO, TX 78213 | 210.375.9000  
TEXAS ENGINEERING FIRM #470 | TEXAS SURVEYING FIRM #1029800

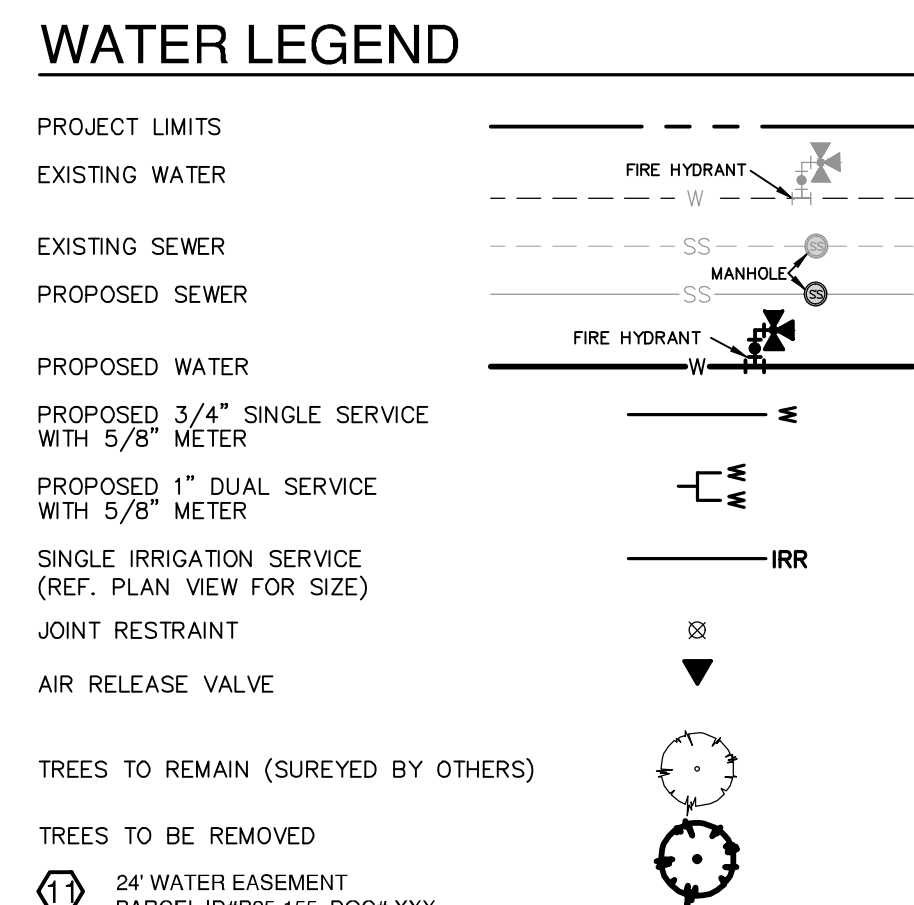
**18-INCH OFFSITE WATER (OVERSIZED)**  
**SAN ANTONIO, TEXAS**

**1. WATER DISTRIBUTION PLAN**

OVER

ESPINO TRACT

PLAT NO. N/A  
JOB NO. 13240-04  
DATE JULY 2025  
DESIGNER TC  
CHECKED DVS / DW DRAWN JV  
SHEET C4.01



**FIRE FLOW NOTE:**

IN AN EFFORT TO MEET THE CITY OF SAN ANTONIO'S FIRE FLOW REQUIREMENTS FOR THE PROPOSED RESIDENTIAL DEVELOPMENT, THE PUBLIC WATER MAIN SYSTEM HAS BEEN DESIGNED FOR A MINIMUM FIRE FLOW DEMAND OF 1500 GPM AT 25 PSI RESIDUAL PRESSURE. THE FIRE FLOW REQUIREMENTS AND MINIMUM PRESSURES WILL BE REVIEWED DURING THE BUILDING PERMIT PROCESS IN ACCORDANCE WITH THE PRECEDURES SET FORTH BY THE CITY OF SAN ANTONIO DIRECTOR OF DEVELOPMENT SERVICES DEPARTMENT AND THE SAN ANTONIO FIRE DEPARTMENT FIRE MARSHAL.

**ROW PERMIT NOTE:**

A BEAR COUNTRY PERMIT MUST BE OBTAINED BEFORE WORKING IN BEAR COUNTRY RIGHTS-OF-WAY.

**PRESSURE REDUCING VALVE NOTE:**

PRESSURE REDUCING VALVE TO BE INSTALLED ON CUSTOMER'S SIDE OF METER BY HOMEOWNER.

**PRESSURE NOTE:**

CONTRACTOR TO VERIFY THAT NO PORTION OF THE TRACT IS BELOW GROUND ELEVATION OF 745 FEET WHERE THE STATIC PRESSURE WILL NOT BE MAINTAINED. AT ALL SUCH LOCATIONS WHERE THE GROUND LEVEL IS BELOW 745 FEET, THE DEVELOPER OR BUILDER SHALL INSTALL AT EACH LOT, ON THE CUSTOMER'S SIDE OF THE METER, AN APPROVED PRESSURE REDUCING REGULATOR IN CONFORMANCE WITH THE PLUMBING CODE OF THE CITY OF SAN ANTONIO. NO DUAL SERVICES ALLOWED FOR ANY LOT(S) IF "PRV IS REQUIRED FOR SUCH LOT(S)", ONLY SINGLE SERVICE CONNECTIONS SHALL BE ALLOWED.

NOTE: PRESSURE REDUCING REGULATOR IS ALSO KNOWN AS A PRESSURE REDUCING VALVE (PRV).

## JOINT RESTRAINT NOTE:

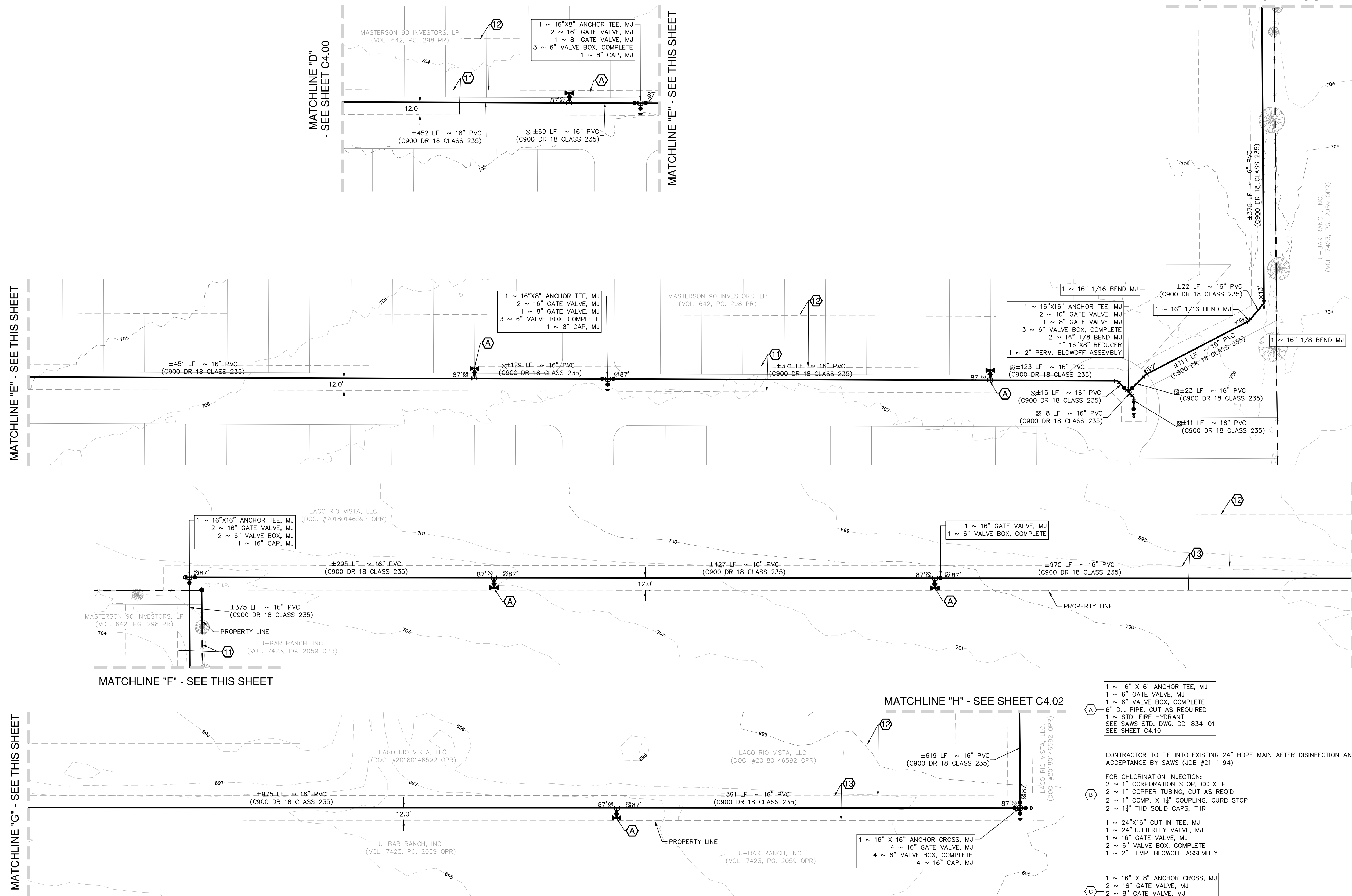
CONTRACTOR SHALL INSTALL RETAINER GLANDS AT ALL FITTINGS AND PROVIDE JOINT RESTRAINING HARNESSSES OR FIELD LOCK GASKETS AT ALL JOINTS WITHIN THE LENGTH SHOWN. CONTRACTOR SHALL INSURE THAT ALL TEES, BENDS, VALVES, ETC. HAVE A MINIMUM OF 5 FT OF PIPE WITH NO JOINTS OR FITTINGS WITHIN THE LENGTH SHOWN. RETAINER GLANDS SHALL BE CALCULATED BY SAWS APPROVED PROGRAMS. THERE WILL BE NO SEPARATE PAY ITEM FOR RETAINER GLANDS AND OTHER JOINT RESTRAINING HARNESSSES AND GASKETS, BUT SHALL BE SUBSIDIARY TO THE UNIT PRICE LINED UNDER JOINTS.

## TRENCH EXCAVATION SAFETY PROTECTION:

CONTRACTOR AND/OR CONTRACTOR'S INDEPENDENTLY RETAINED EMPLOYEE OR STRUCTURAL DESIGN/ GEOTECHNICAL/ SAFETY/EQUIPMENT CONSULTANT, IF ANY, SHALL REVIEW THESE PLANS AND ANY AVAILABLE GEOTECHNICAL INFORMATION AND THE ANTICIPATED INSTALLATION SITES WITHIN THE PROJECT WORK AREA IN ORDER TO IMPLEMENT CONTRACTOR'S TRENCH EXCAVATION SAFETY PROTECTION PROGRAMS, PROCEDURES AND/OR PROCEDURES FOR THE PROJECT DESCRIBED IN THE CONTRACT DOCUMENTS. THE CONTRACTOR'S IMPLEMENTATION OF THESE SYSTEMS, PROGRAMS AND/OR PROCEDURES SHALL PROVIDE FOR ADEQUATE TRENCH EXCAVATION SAFETY PROTECTION TO EMPLOYEES AND INDEPENDENTLY RETAINED EMPLOYEES FOR TRENCH EXCAVATIONS. SPECIFICALLY, CONTRACTOR AND/OR CONTRACTOR'S INDEPENDENTLY RETAINED EMPLOYEE OR SAFETY CONSULTANT SHALL IMPLEMENT A TRENCH SAFETY PROGRAM IN ACCORDANCE WITH OSHA STANDARDS GOVERNING THE PROTECTION AND ACTIVITIES OF INDIVIDUALS WORKING IN AND AROUND TRENCH EXCAVATION.

## WATER (SAWS PRESSURE ZONE 930)

DEVELOPER'S NAME: KB HOMES LONE STAR, INC.  
ADDRESS: 4800 FREDERICKSBURG RD, STE 100  
CITY: SAN ANTONIO STATE: TEXAS ZIP: 78229  
PHONE# 210-301-5485 EMAIL \_\_\_\_\_  
SAWS BLOCK MAP# 070550 TOTAL EDU'S 191 TOTAL ACREAGE 56.17  
TOTAL LINEAR FOOTAGE OF PIPE: XXXX PLAT NO. 25-11800194  
NUMBER OF LOTS 0 SAWS JOB NO. 25-XXXX



NOTE: CONTRACTOR TO CAP 8" GATE VALVE



