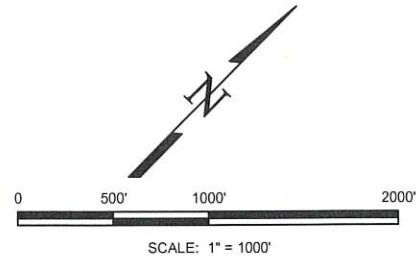
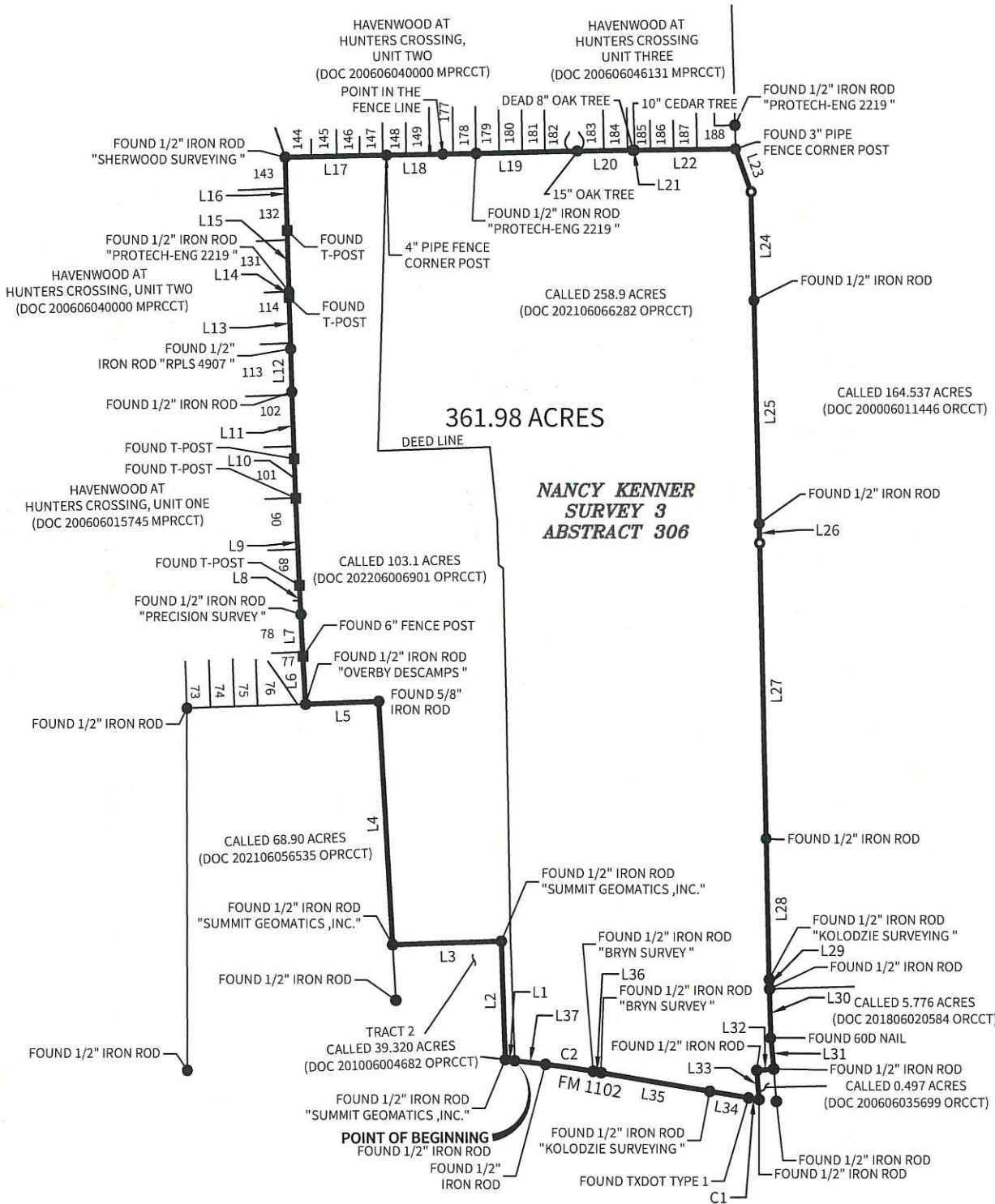


NOTES:

1. BASIS OF BEARING IS THE TEXAS STATE PLANE COORDINATE SYSTEM, SOUTH CENTRAL ZONE (4204), NAD 83 (2011), ALL DISTANCES SHOWN HEREON ARE GROUND DISTANCES USING A COMBINED SCALE FACTOR OF 1.00013.



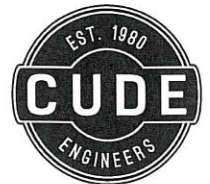
CURVE TABLE					
CURVE NO.	RADIUS	DELTA	ARC LENGTH	CHORD BEARING	CHORD DIST.
C1	1870.10'	2°08'14"	69.76'	S53°45'53"W	69.76'
C2	5769.70'	3°05'02"	310.55'	S53°05'05"W	310.51'

LINE TABLE		
LINE NO.	BEARING	DISTANCE
L1	S51°52'23"W	60.76'
L2	N47°03'31"W	757.79'
L3	S42°56'29"W	698.79'
L4	N48°24'48"W	1561.20'
L5	S42°48'58"W	471.42'
L6	N48°23'33"W	306.46'
L7	N47°54'13"W	270.21'
L8	N48°00'48"W	185.73'
L9	N47°43'21"W	557.82'
L10	N47°19'15"W	254.25'
L11	N47°16'18"W	428.03'
L12	N46°56'25"W	274.76'
L13	N46°51'48"W	329.25'
L14	N46°51'22"W	38.15'
L15	N46°51'03"W	390.70'
L16	N46°49'33"W	468.39'
L17	N43°42'09"E	656.30'
L18	N43°40'26"E	360.63'
L19	N43°40'35"E	879.10'
L20	N44°05'20"E	355.20'

LINE TABLE		
LINE NO.	BEARING	DISTANCE
L21	N45°00'23"E	10.90'
L22	N44°02'32"E	650.92'
L23	S65°12'22"E	292.01'
L24	S46°32'49"E	695.33'
L25	S46°24'54"E	1429.16'
L26	S46°18'47"E	124.19'
L27	S46°18'47"E	1895.57'
L28	S46°20'35"E	901.64'
L29	S46°33'48"E	60.91'
L30	S46°49'33"E	313.24'
L31	S49°52'40"E	199.46'
L32	S40°06'35"W	109.99'
L33	S49°46'25"E	187.13'
L34	S54°30'00"W	253.54'
L35	S54°42'00"W	706.77'
L36	S54°40'20"W	52.29'
L37	S51°22'14"W	201.91'



- LEGEND**
- MPRCCT = MAP AND PLAT RECORDS OF COMAL COUNTY, TEXAS
- OPRCCT = OFFICIAL PUBLIC RECORDS OF COMAL COUNTY, TEXAS
- = SET 1/2" IRON ROD WITH "CUDE" CAP
- = FOUND AS NOTED



4122 POND HILL RD. • SUITE 101  
SAN ANTONIO, TEXAS 78231  
T:210.681.2951 • F:210.523.7112  
WWW.CUDEENGINEERS.COM  
TBPELS FIRM #10048500  
TBPE FIRM #455

361.98 ACRES OF LAND LOCATED IN THE NANCY KENNER SURVEY 3, ABSTRACT 306, COMAL COUNTY, TEXAS AND BEING COMPRISED OF A CALLED 258.9 ACRES OF LAND AS DESCRIBED IN DOCUMENT 20210606282 AND OF A CALLED 103.1 ACRES OF LAND AS DESCRIBED IN 2022060606901 BOTH OF THE OFFICIAL PUBLIC RECORDS OF COMAL COUNTY, TEXAS

DATE

07-07-22

PROJECT NO.

03678.000

DRAWN BY

JG

CHECKED BY

YVB