

This specification shall be used only in conjunction with the NBU Electrical Connection Policy and may not reflect all requirements of a specific installation.

Locations are determined by NBU. All customer installations require inspection by NBU.

A, B, C = Conductor phase; Phase orientation shall be verified prior to installation.

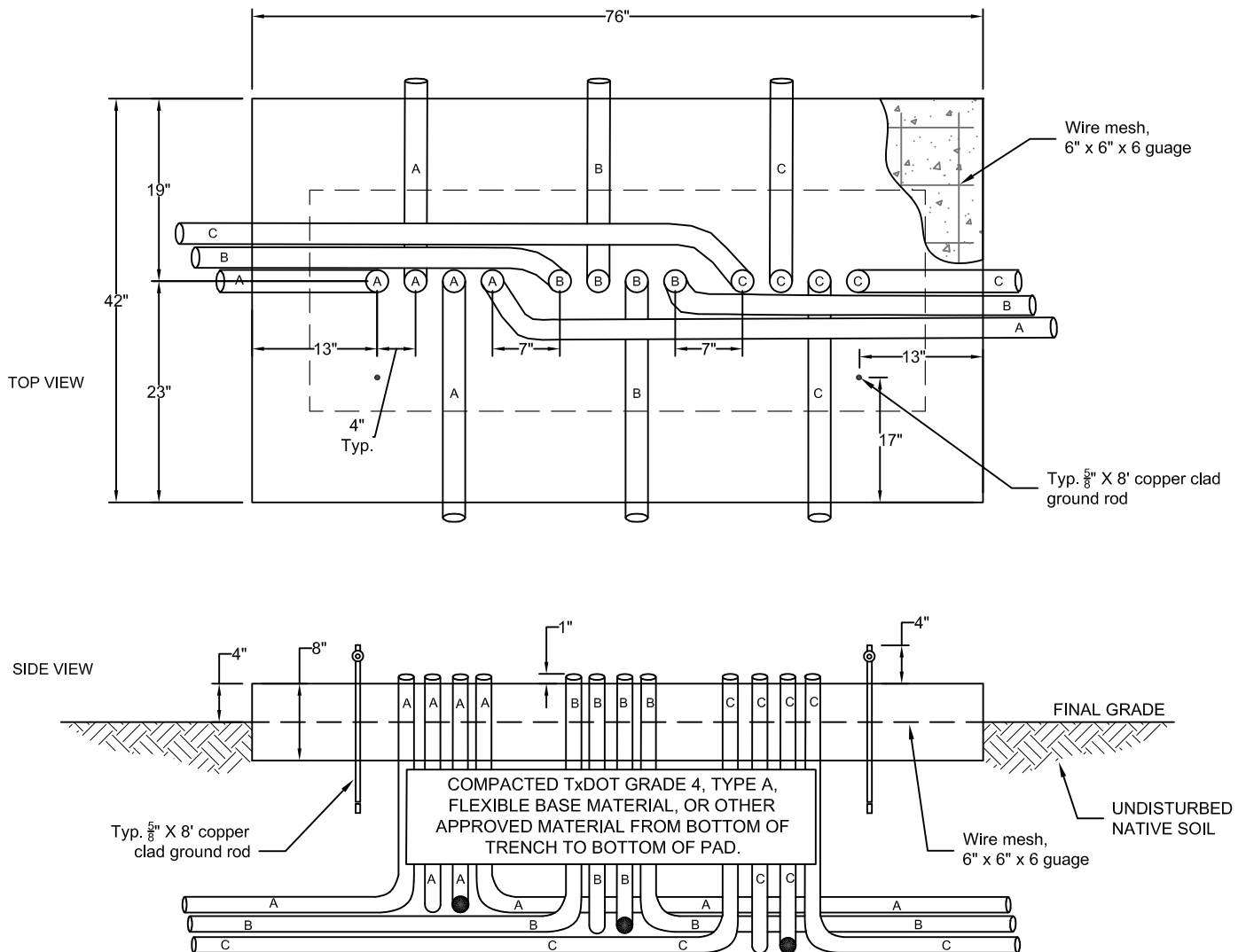
Underground conduit to be installed according to NBU specification EU-910. **Conduit to be sized by NBU** and have 1" projection above concrete, 36" radius, 90° sweeps. Pull string to be installed by customer.

Copper-clad ground rods, 5/8" x 8', 2 required, to have 4" projection above top on concrete.

Concrete shall be 3000 PSI minimum.

All primary stubouts shall be 5' minimum from edge of pad.

Conduit positions, concrete forms, re-bar, and trench compaction to be approved by NBU before concrete is poured



Electric Engineering
 355 FM 306
 PO Box 310289
 New Braunfels, TX 78131-0289
 830-608-8951

THREE PHASE 4 PLACE,
 200AMP PRIMARY ENCLOSURE PAD

| ISSUED | SCALE | DRAWING NUMBER |
|--------|-------|----------------|
| 12/25 | NTS | EU-310 |