

This specification shall be used only in conjunction with the NBU Electrical Connection Policy and may not reflect all requirements of a specific installation.

Locations are determined by NBU. All customer installations require inspection by NBU.

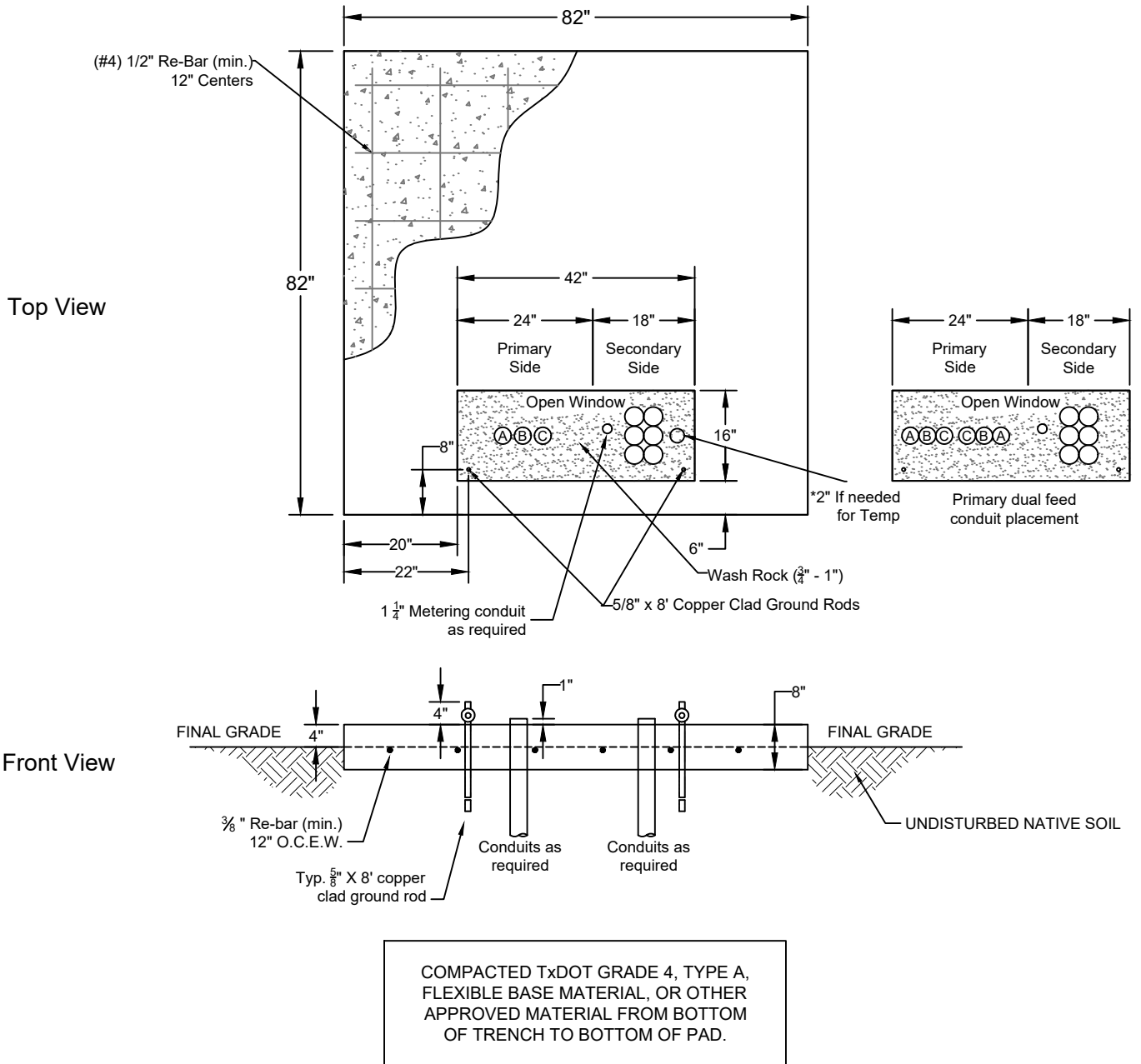
Underground conduit to be installed according to NBU specification EU-910. **Conduit to be sized by NBU** and have 1" projection above concrete, 36" radius, 90° sweeps. Pull string to be installed by customer.

Copper-clad ground rods, 5/8" x 8', 2 required, to have 4" projection above top on concrete.

Concrete shall be 3000 PSI minimum.

All primary and secondary stub outs shall be 10'-0" minimum.

Conduit positions, concrete forms, re-bar, and trench compaction to be approved by NBU before concrete is poured



Electric Engineering  
 355 FM 306  
 PO Box 310289  
 New Braunfels, TX 78131-0289  
 830-608-8951

**THREE PHASE TRANSFORMER PAD  
 75 - 300 kVA**

ISSUED

12/25

SCALE

NTS

DRAWING NUMBER

EU-510