

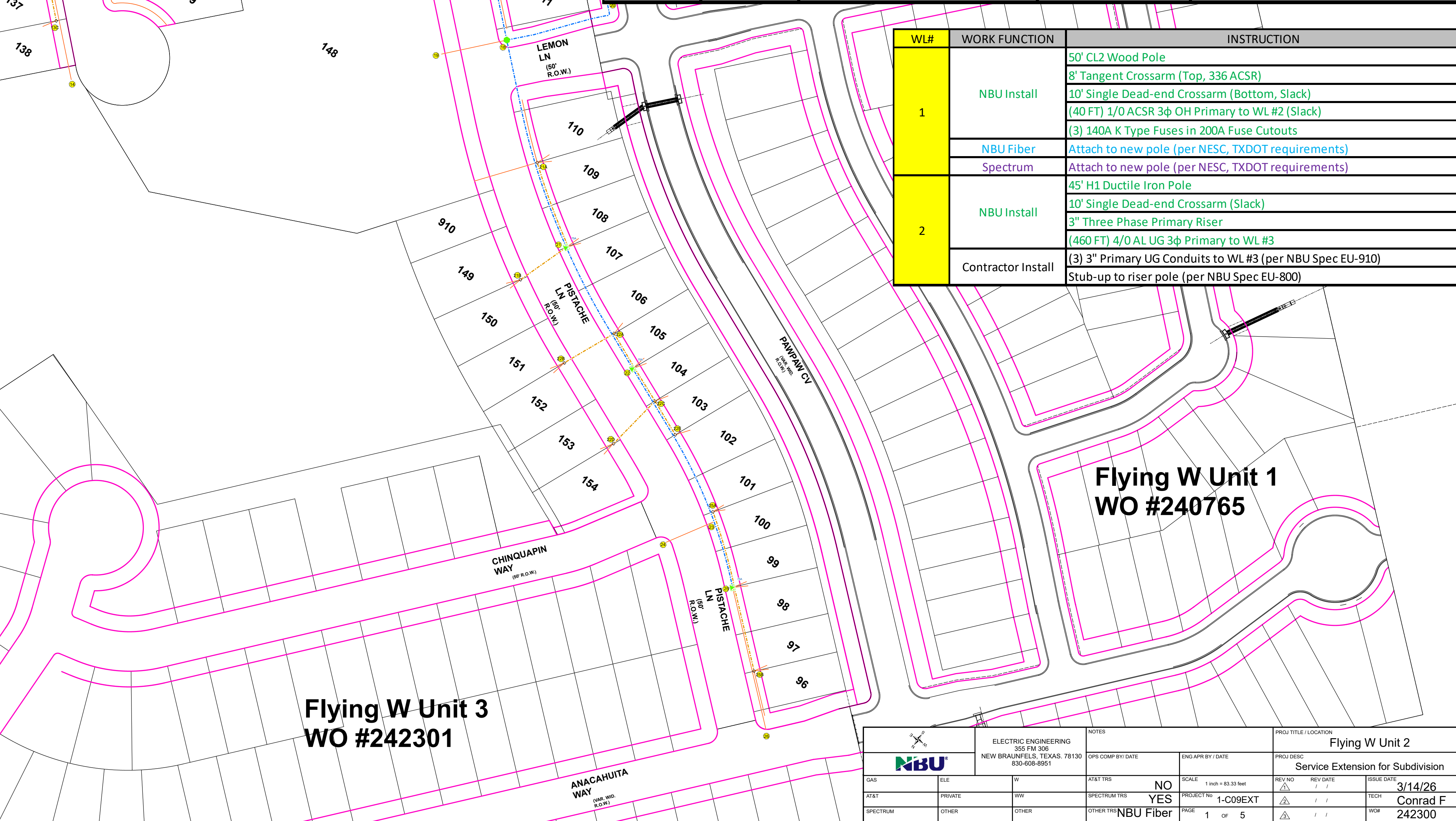
TX DOT POLE NOTES				
WL	Status	DISTANCE TO EXISTING EDGE OF PAVEMENT	DISTANCE INTO ROW	DIAMETER AT FINAL GRADE
1	New	26'	18"	24"

Conductor	Length (FT)
4/0 AL UG Primary	2100
1/0 AL UG Primary	4360
350 MCM AL UG TPX	2205
1/0 AL UG QPX	50

WL#	WORK FUNCTION	INSTRUCTION
1	NBU Install	50' CL2 Wood Pole 8' Tangent Crossarm (Top, 336 ACSR) 10' Single Dead-end Crossarm (Bottom, Slack) (40 FT) 1/0 ACSR 3φ OH Primary to WL #2 (Slack) (3) 140A K Type Fuses in 200A Fuse Cutouts
	NBU Fiber	Attach to new pole (per NESC, TXDOT requirements)
	Spectrum	Attach to new pole (per NESC, TXDOT requirements)
2	NBU Install	45' H1 Ductile Iron Pole 10' Single Dead-end Crossarm (Slack) 3" Three Phase Primary Riser (460 FT) 4/0 AL UG 3φ Primary to WL #3
	Contractor Install	(3) 3" Primary UG Conduits to WL #3 (per NBU Spec EU-910) Stub-up to riser pole (per NBU Spec EU-800)

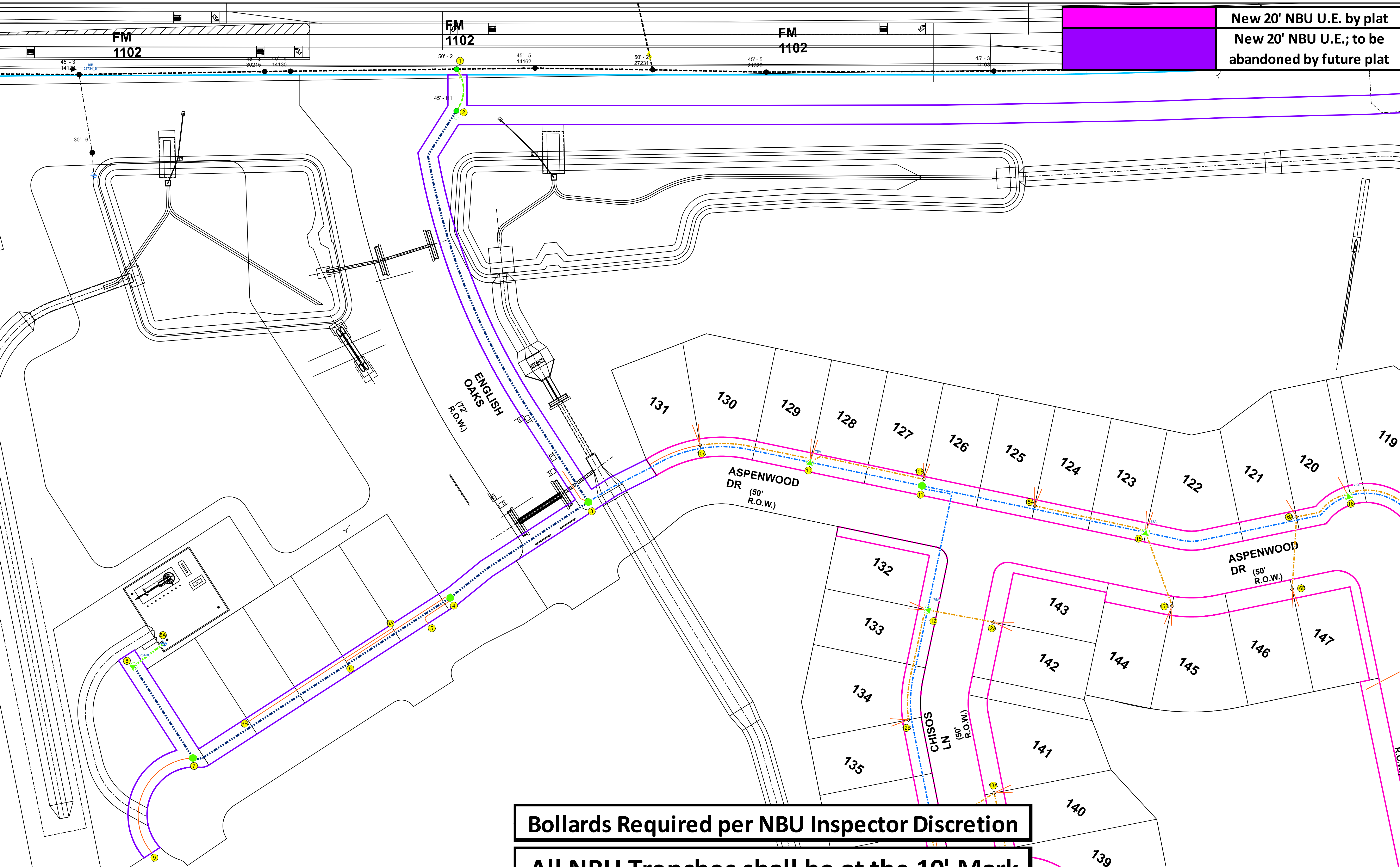
	New 20' NBU U.E. by plat
	New 20' NBU U.E.; to be abandoned by future plat
	TXDOT ROW Line

- Bollards Required per NBU Inspector Discretion
- All NBU Trenches shall be at the 10' Mark
- Developer Shall stake Lots and Easement for NBU Inspector



ELECTRIC ENGINEERING NEW BRAUNFELS, TEXAS 78130 830-608-8951		NOTES		PROJ TITLE / LOCATION Flying W Unit 2	
GAS	FILE	AT&T TRS	NO	SCALE	1 inch = 63.33 feet
AT&T	PRIVATE	SPECTRUM TRS	YES	REV NO	1
SPECTRUM	OTHER	OTHER TRS	NBU Fiber	PROJECT NO	1-C09EXT
PAGE 1 OF 5			ISSUE DATE		3/14/26
			TECH		Conrad F
			WOK		242300

New 20' NBU U.E. by plat
 New 20' NBU U.E.; to be abandoned by future plat

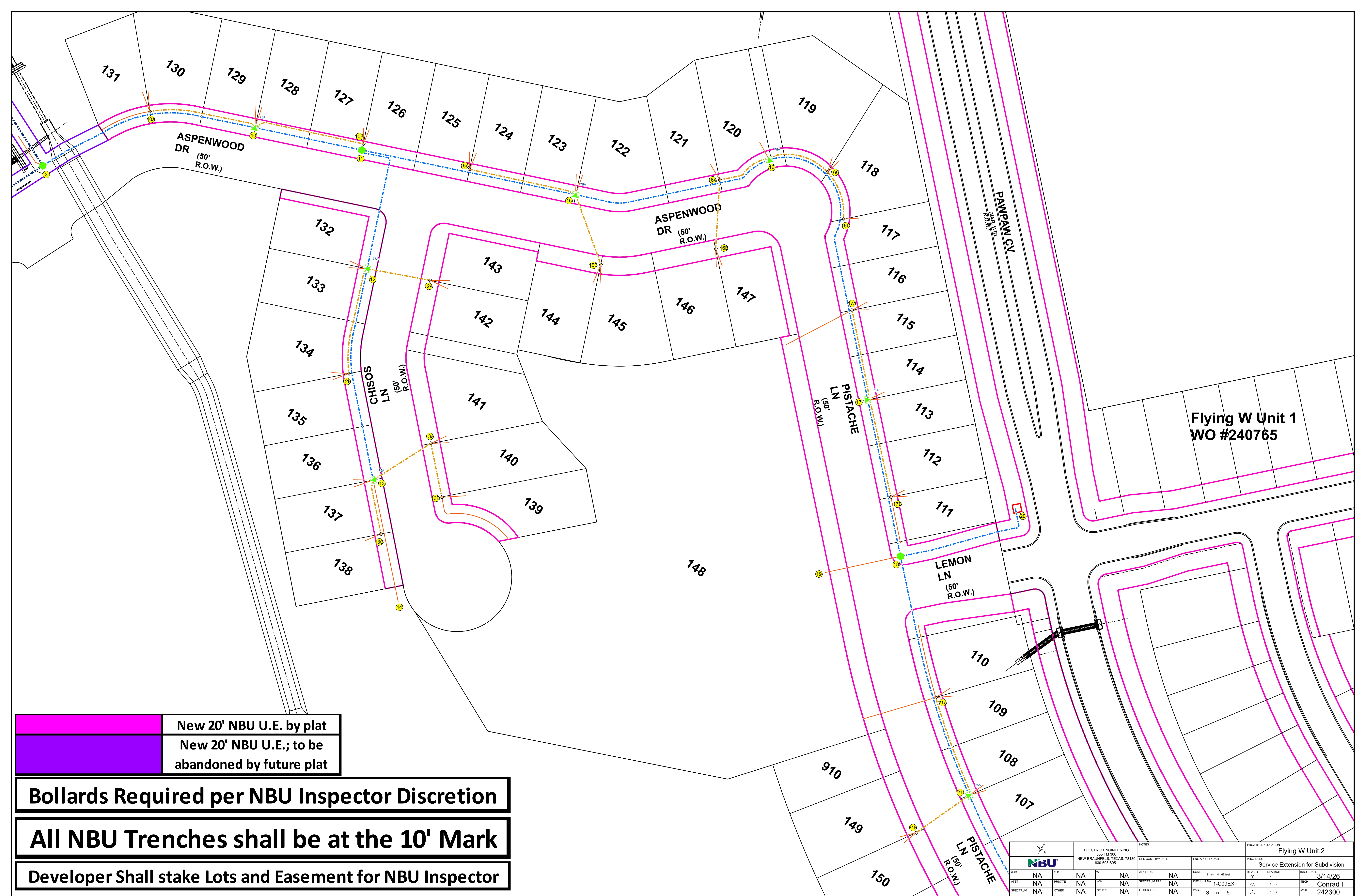


Bollards Required per NBU Inspector Discretion

All NBU Trenches shall be at the 10' Mark

Developer Shall stake Lots and Easement for NBU Inspector

ELECTRIC ENGINEERING 305 FM 306 NEW BRAUNFELS, TEXAS 78130 830-608-8951		NOTES		PROJ TITLE / LOCATION Flying W Unit 2	
GPS COMP BY DATE		ENGR APPR BY DATE		PROJ DESC Service Extension for Subdivision	
AT&T TRS		SCALE 1 inch = 41.87 feet		REV NO 1	
SPECTRUM TRS		NO		REV DATE 3/14/26	
SPECTRUM TRS		YES		TECH Conrad F	
SPECTRUM TRS		PROJECT NO 1-C09EXT		WOK 242300	
SPECTRUM TRS		PAGE 2 OF 5			



Flying W Unit 1
WO #240765

New 20' NBU U.E. by plat
New 20' NBU U.E.; to be abandoned by future plat

Bollards Required per NBU Inspector Discretion



All NBU Trenches shall be at the 10' Mark

Developer Shall stake Lots and Easement for NBU Inspector

ELECTRIC ENGINEERING 305 FM 306 NEW BRAUNFELS, TEXAS 78130 830-608-8951		NOTES		PROJ TITLE / LOCATION Flying W Unit 2	
GPS COMP BY / DATE		ENGR APPR BY / DATE		PROJ DESC Service Extension for Subdivision	
GAS	FILE	IV	NA	AT&T TRS	SCALE
NA	NA	NA	NA	NA	1 inch = 41.87 feet
AT&T	PRIVATE	WWW	NA	SPECTRUM TRS	REV NO
NA	NA	NA	NA	NA	1 / 1
SPECTRUM	OTHER	OTHER	NA	OTHER TRS	ISSUE DATE
NA	NA	NA	NA	NA	3/14/26
PAGE 3 OF 5				TECH Conrad F	
				WOK 242300	

Flying W Unit 1
WO #240765

Flying W Unit 3
WO #242301

 New 20' NBU U.E. by plat
 New 20' NBU U.E.; to be abandoned by future plat

Bollards Required per NBU Inspector Discretion

All NBU Trenches shall be at the 10' Mark

Developer Shall stake Lots and Easement for NBU Inspector

ELECTRIC ENGINEERING 305 FM 306 NEW BRAUNFELS, TEXAS 78130 830-608-8951		NOTES		PROJECT TITLE / LOCATION Flying W Unit 2	
GPS COMP BY / DATE		ENGR APPR BY / DATE		PROJECT DESC Service Extension for Subdivision	
GAS	ELE	IV	SCALE	REV NO	ISSUE DATE
NA	NA	NA	1 inch = 41.87 feet	1	3/14/26
AT&T	PRIVATE	WWW	SPECTRUM TRS	PROJECT No	TECH
NA	NA	NA	NA	1-C09EXT	Conrad F
SPECTRUM	OTHER	OTHER	OTHER TRS	PAGE	WOK
NA	NA	NA	NA	4 OF 5	242300


Conductor	Length (FT)
4/0 AL UG Primary	2100
1/0 AL UG Primary	4360
350 MCM AL UG TPX	2205
1/0 AL UG QPX	50

New 20' NBU U.E. by plat
New 20' NBU U.E.; to be abandoned by future plat

Bollards Required per NBU Inspector Discretion

Developer Shall stake Lots and Easement for NBU Inspector

All NBU Trenches shall be at the 10' Mark

		ELECTRIC ENGINEERING 355 FM 306 NEW BRAUNFELS, TEXAS 78130 830-608-8951		NOTES GPS COMP BY DATE ENGR APPR BY DATE		PROJ TITLE / LOCATION Flying W Unit 2	
GAB		FILE		AT&T TRS		PROJ DESC Callouts	
AT&T		PRIVATE		SPECTRUM TRS		SCALE 1 inch = 63.33 feet	
SPECTRUM		OTHER		OTHER TRS NBU Fiber		REV NO 1	
				PAGE 5 OF 5		REV DATE 3/14/26	
						TECH Conrad F	
						WOK 242300	

WL#	WORK FUNCTION	INSTRUCTION
1	NBU Install	50' CL2 Wood Pole
		8' Tangent Crossarm (Top, 336 ACSR)
		10' Single Dead-end Crossarm (Bottom, Slack)
NBU Fiber	Spectrum	(40 FT) 1/0 ACSR 3φ OH Primary to WL #2 (Slack)
		(3) 140A K Type Fuses in 200A Fuse Cutouts
		Attach to new pole (per NESC, TXDOT requirements)
2	NBU Install	45' H1 Ductile Iron Pole
		10' Single Dead-end Crossarm (Slack)
		3" Three Phase Primary Riser
Contractor Install		(460 FT) 4/0 AL UG 3φ Primary to WL #3
		(3) 3" Primary UG Conduits to WL #3 (per NBU Spec EU-910)
		Stub-up to riser pole (per NBU Spec EU-800)
3	NBU Install	3 Place 200A Three Phase Primary Pullbox
		(175 FT) 4/0 AL UG 3φ Primary to WL #4
		(250 FT) 1/0 AL UG 1φ Primary to WL #10 (Aφ)
Contractor Install		3 Place 200A Three Phase Primary Pullbox Foundation (per NBU Spec EU-315)
		(3) 3" Primary UG Conduits to WL #4 (per NBU Spec EU-910)
		(1) 3" Primary UG Conduit to WL #10 (Aφ, per NBU Spec EU-910)
4	NBU Install	4 Place 200A Three Phase Primary Pullbox
		(320 FT) 1/0 AL UG 3φ Primary to WL #7
		The 1/0 to WL #7 is not a mistake
NBU Note		Approximately 42' to WL #5
		Approximately 128' to WL #6
		4 Place 200A Three Phase Primary Pullbox Foundation (per NBU Spec EU-310)
Contractor Install		(3) 3" Primary UG Conduits to WL #5 (per NBU Spec EU-910)
		(1) 3" Primary UG Conduit to WL #7 (per NBU Spec EU-910)
		(1) 3" Primary UG Conduit to WL #6 (Cφ, per NBU Spec EU-910)
5	NBU Note	Cap conduits and place marker
		Turn-up primary conduit and cap as if there was a single phase transformer pad here
		Turn-up secondary conduits and cap as if there was a single phase transformer pad here
6	NBU Note	Approximately 60' to WL #6A
		Approximately 128' to WL #6B
		(1) 3" Secondary UG Conduit to WL #6A (Cφ, per NBU Spec EU-910)
6A	NBU Note	(1) 3" Secondary UG Conduit to WL #6B (Cφ, per NBU Spec EU-910)
		Turn-up secondary conduits and cap as if there was a secondary pullbox here
		Turn-up secondary conduits and cap as if there was a secondary pullbox here
6B	NBU Note	3 Place 200A Three Phase Primary Pullbox
		(115 FT) 1/0 AL UG 3φ Primary to WL #8
		Approximately 135' to WL #9
7	Contractor Install	3 Place 200A Three Phase Primary Pullbox Foundation (per NBU Spec EU-315)
		(3) 3" Primary UG Conduits to WL #8 (per NBU Spec EU-910)
		(3) 3" Primary UG Conduits to WL #9 (per NBU Spec EU-910)
8	NBU Install	75 KVA 277/480V 3φ Padmount Transformer
		(3) Primary Arrestor Elbows
		(40 FT) 1/0 AL UG QPX to WL #8A
Contractor Install		Three Phase Padmount Transformer Foundation (per NBU Spec EU-510)
		(2) 3" Secondary UG Conduits to WL #8A (per NBU Spec EU-910)
		FM165 CL200 120/480V Meter
8A	NBU Note	Land spare conduit on rack and cap
		Build 200A Three Phase Service on a rack (per NBU spec EU-020, Sheet E9,01)
		Cap conduits and place marker
9	NBU Note	75 KVA 120/240V 1φ Padmount Transformer (Aφ)
		(120 FT) 1/0 AL UG 1φ Primary to WL #11 (Aφ)
		(120 FT) 350 MCM AL UG TPX to WL #10A (Aφ)
10	NBU Install	(120 FT) 350 MCM AL UG TPX to WL #10B (Aφ)
		Single Phase Padmount Transformer Foundation (per NBU Spec EU-530)
		(1) 3" Primary UG Conduit to WL #11 (Aφ, per NBU Spec EU-910)
Contractor Install		(1) 3" Secondary UG Conduit to WL #10A (per NBU Spec EU-910)
		(1) 3" Secondary UG Conduit to WL #10B (per NBU Spec EU-910)
		(2) 3" Secondary UG Conduit Stubouts (per NBU Spec EU-910)
10A	Contractor Install	Secondary Pullbox (per NBU Spec EU-210)
		(3) 3" Secondary UG Conduit Stubouts (per NBU Spec EU-910)
		Secondary Pullbox (per NBU Spec EU-210)
10B	Contractor Install	(2) 3" Secondary UG Conduit Stubouts (per NBU Spec EU-910)
		3 Place Single Phase Primary Pullbox
		(155 FT) 1/0 AL UG 1φ Primary to WL #12 (Aφ)
11	NBU Install	(240 FT) 1/0 AL UG 1φ Primary to WL #15 (Aφ)
		3 Place Single Phase Primary Pullbox Foundation (per NBU Spec EU-330)
		(1) 3" Primary UG Conduit to WL #12 (Aφ, per NBU Spec EU-910)
Contractor Install		(1) 3" Primary UG Conduit to WL #15 (Aφ, per NBU Spec EU-910)
		(1) 3" Secondary UG Conduit to WL #12A (Aφ, per NBU Spec EU-910)
		(1) 3" Secondary UG Conduit to WL #12B (Aφ, per NBU Spec EU-910)
12	NBU Install	75 KVA 120/240V 1φ Padmount Transformer (Aφ)
		(235 FT) 1/0 AL UG 1φ Primary to WL #13 (Aφ)
		(70 FT) 350 MCM AL UG TPX to WL #12A (Aφ)
Contractor Install		(120 FT) 350 MCM AL UG TPX to WL #12B (Aφ)
		Single Phase Padmount Transformer Foundation (per NBU Spec EU-530)
		(1) 3" Primary UG Conduit to WL #13 (Aφ, per NBU Spec EU-910)
12A	Contractor Install	(1) 3" Secondary UG Conduit to WL #12A (per NBU Spec EU-910)
		(1) 3" Secondary UG Conduit to WL #12B (per NBU Spec EU-910)
		(2) 3" Secondary UG Conduit Stubouts (per NBU Spec EU-910)
12B	Contractor Install	Secondary Pullbox (per NBU Spec EU-210)
		(2) 3" Secondary UG Conduit Stubouts (per NBU Spec EU-910)
		75 KVA 120/240V 1φ Padmount Transformer (Aφ)
13	NBU Install	Primary Arrestor Elbow
		(75 FT) 350 MCM AL UG TPX to WL #13A (Aφ)
		(60 FT) 350 MCM AL UG TPX to WL #13C (Aφ)
NBU Note		Approximately 135' to WL #14
		Single Phase Padmount Transformer Foundation (per NBU Spec EU-530)
		(1) 3" Primary UG Conduit to WL #14 (Aφ, per NBU Spec EU-910)
Contractor Install		(1) 3" Secondary UG Conduit to WL #13A (per NBU Spec EU-910)
		(1) 3" Secondary UG Conduit to WL #13C (per NBU Spec EU-910)
		(2) 3" Secondary UG Conduit Stubouts (per NBU Spec EU-910)

WL#	WORK FUNCTION	INSTRUCTION
13A	Contractor Install	NBU Install
		(60 FT) 350 MCM AL UG TPX to WL #13B (Aφ)
		Secondary Pullbox (per NBU Spec EU-210)
13B	Contractor Install	(1) 3" Secondary UG Conduit to WL #13B (per NBU Spec EU-910)
		(2) 3" Secondary UG Conduit Stubouts (per NBU Spec EU-910)
		Secondary Pullbox (per NBU Spec EU-210)
13C	Contractor Install	(2) 3" Secondary UG Conduit Stubouts (per NBU Spec EU-910)
		Secondary Pullbox (per NBU Spec EU-210)
		(1) 3" Secondary UG Conduit Stubout (per NBU Spec EU-910)
14	NBU Note	Cap conduit and place marker
		75 KVA 120/240V 1φ Padmount Transformer (Aφ)
		(225 FT) 1/0 AL UG 1φ Primary to WL #16 (Aφ)
15	NBU Install	(120 FT) 350 MCM AL UG TPX to WL #15A (Aφ)
		(80 FT) 350 MCM AL UG TPX to WL #15B (Aφ)
		Single Phase Padmount Transformer Foundation (per NBU Spec EU-530)
Contractor Install		(1) 3" Primary UG Conduit to WL #16 (Aφ, per NBU Spec EU-910)
		(1) 3" Secondary UG Conduit to WL #15A (per NBU Spec EU-910)
		(1) 3" Secondary UG Conduit to WL #15B (per NBU Spec EU-910)
15A	Contractor Install	(2) 3" Secondary UG Conduit Stubouts (per NBU Spec EU-910)
		Secondary Pullbox (per NBU Spec EU-210)
		(2) 3" Secondary UG Conduit Stubouts (per NBU Spec EU-910)
15B	Contractor Install	75 KVA 120/240V 1φ Padmount Transformer (Aφ)
		(325 FT) 1/0 AL UG 1φ Primary to WL #17 (Aφ)
		Primary Open Point
16	NBU Install	(60 FT) 350 MCM AL UG TPX to WL #16A (Aφ)
		(70 FT) 350 MCM AL UG TPX to WL #16B (Aφ)
		Offset transformer pad from Lot 119 lot-line as shown (approx. 15'). There is a drainage easement between Lot 119 and Lot 120, and we cannot locate the padmount there
Contractor Install		Single Phase Padmount Transformer Foundation (per NBU Spec EU-530)
		(1) 3" Primary UG Conduit to WL #17 (Aφ, per NBU Spec EU-910)
		(1) 3" Secondary UG Conduit to WL #16A (per NBU Spec EU-910)
16A	NBU Install	(1) 3" Secondary UG Conduit to WL #16C (per NBU Spec EU-910)
		(2) 3" Secondary UG Conduit Stubouts (per NBU Spec EU-910)
		Secondary Pullbox (per NBU Spec EU-210)
16B	Contractor Install	(1) 3" Secondary UG Conduit to WL #16B (per NBU Spec EU-910)
		(1) 3" Secondary UG Conduit Stubout (per NBU Spec EU-910)
		Secondary Pullbox (per NBU Spec EU-210)
16C	NBU Install	(2) 3" Secondary UG Conduit Stubouts (per NBU Spec EU-910)
		(55 FT) 350 MCM AL UG TPX to WL #16D (Aφ)
		Secondary Pullbox (per NBU Spec EU-210)
16D	Contractor Install	(1) 3" Secondary UG Conduit to WL #16D (per NBU Spec EU-910)
		(2) 3" Secondary UG Conduit Stubouts (per NBU Spec EU-910)
		Secondary Pullbox (per NBU Spec EU-210)
17	NBU Install	(1) 3" Secondary UG Conduit to WL #17A (Aφ)
		(175 FT) 1/0 AL UG 1φ Primary to WL #18 (Aφ)
		(120 FT) 350 MCM AL UG TPX to WL #17A (Aφ)
Contractor Install		(120 FT) 350 MCM AL UG TPX to WL #17B (Aφ)
		Single Phase Padmount Transformer Foundation (per NBU Spec EU-530)
		(1) 3" Primary UG Conduit to WL #18 (Aφ, per NBU Spec EU-910)
17A	Contractor Install	(1) 3" Secondary UG Conduit to WL #17A (per NBU Spec EU-910)
		(1) 3" Secondary UG Conduit to WL #17B (per NBU Spec EU-910)
		(2) 3" Secondary UG Conduit Stubouts (per NBU Spec EU-910)
17B	Contractor Install	Secondary Pullbox (per NBU Spec EU-210)
		(3) 3" Secondary UG Conduit Stubouts (per NBU Spec EU-910)
		4 Place Single Phase Primary Pullbox
18	NBU Install	(155 FT) 1/0 AL UG 1φ Primary to WL #20 (Aφ)
		(275 FT) 1/0 AL UG 1φ Primary to WL #21 (Aφ)
		(120 FT) 350 MCM AL UG TPX to WL #10B (Aφ)
Contractor Install		4 Place Single Phase Primary Pullbox Foundation (per NBU Spec EU-330)
		(1) 3" Primary UG Conduit to WL #19 (Aφ, per NBU Spec EU-910)
		(1) 3" Primary UG Conduit to WL #20 (Aφ, per NBU Spec EU-910); intercept existing stubout
19	NBU Note	Cap conduit and place marker
		(1) 65A E Type Switchgear Fuse (Aφ)
		Switchgear #910 installed with WO #240765
20	NBU Install	75 KVA 120/240V 1φ Padmount Transformer (Aφ)
		(175 FT) 1/0 AL UG 1φ Primary to WL #22 (Aφ)
		(115 FT) 350 MCM AL UG TPX to WL #21A (Aφ)
21	NBU Install	(70 FT) 350 MCM AL UG TPX to WL #21B (Aφ)
		Single Phase Padmount Transformer Foundation (per NBU Spec EU-530)
		(1) 3" Primary UG Conduit to WL #22 (Aφ, per NBU Spec EU-910)
Contractor Install		(1) 3" Secondary UG Conduit to WL #21A (per NBU Spec EU-910)
		(1) 3" Secondary UG Conduit to WL #21B (per NBU Spec EU-910)
		(2) 3" Secondary UG Conduit Stubouts (per NBU Spec EU-910)
21A	Contractor Install	Secondary Pullbox (per NBU Spec EU-210)
		(4) 3" Secondary UG Conduit Stubouts (per NBU Spec EU-910)
		Secondary Pullbox (per NBU Spec EU-210)
21B	Contractor Install	(2) 3" Secondary UG Conduit Stubouts (per NBU Spec EU-910)
		75 KVA 120/240V 1φ Padmount Transformer (Aφ)
		(305 FT) 1/0 AL UG 1φ Primary to WL #25 (Aφ)
22	NBU Install	(50 FT) 350 MCM AL UG TPX to WL #22A (Aφ)
		(50 FT) 350 MCM AL UG TPX to WL #22C (Aφ)
		Approximately 220' to WL #23
Contractor Install		Single Phase Padmount Transformer Foundation (per NBU Spec EU-530)
		(1) 3" Primary UG Conduit to WL #25 (Aφ, per NBU Spec EU-910)
		(1) 3" Secondary UG Conduit to WL #22A (per NBU Spec EU-910)
22A	NBU Install	(1) 3" Secondary UG Conduit to WL #22C (per NBU Spec EU-910)
		(2) 3" Secondary UG Conduit Stubouts (per NBU Spec EU-910)
		(70 FT) 350 MCM AL UG TPX to WL #16D (Aφ)
Contractor Install		Secondary Pullbox (per NBU Spec EU-210)
		(1) 3" Secondary UG Conduit to WL #22B (per NBU Spec EU-910)
		(1) 3" Secondary UG Conduit Stubout (per NBU Spec EU-910)
22B	Contractor Install	Secondary Pullbox (per NBU Spec EU-210)
		(2) 3" Secondary UG Conduit Stubouts (per NBU Spec EU-910)
		(2) 3" Secondary UG Conduit Stubouts (per NBU Spec EU-910)

WL#	WORK FUNCTION	INSTRUCTION
22C	Contractor Install	(70 FT) 350 MCM AL UG TPX to WL #22D (Aφ)
		(50 FT) 350 MCM AL UG TPX to WL #22E (Aφ)
		Secondary Pullbox (per NBU Spec EU-210)
22D	Contractor Install	(1) 3" Secondary UG Conduit to WL #22D (per NBU Spec EU-910)
		(1) 3" Secondary UG Conduit to WL #22E (per NBU Spec EU-910)
		(1) 3" Secondary UG Conduit to WL #22E (per NBU Spec EU-910)
22E	Contractor Install	(1) 3" Secondary UG Conduit Stubout (per NBU Spec EU-910)
		Secondary Pullbox (per NBU Spec EU-210)
		(2) 3" Secondary UG Conduit Stubouts (per NBU Spec EU-910)
23	NBU Note	Approximately 65' to WL #24
		Cap conduit and place marker
		(1) 3" Primary UG Conduit to WL #24 (Bφ, per NBU Spec EU-910)
24	NBU Note	Cap conduit and place marker
		75 KVA 120/240V 1φ Padmount Transformer (Aφ)
		Primary Arrestor Elbow
25	NBU Install	(100 FT) 350 MCM AL UG TPX to WL #25A (Aφ)
		(105 FT) 350 MCM AL UG TPX to WL #25B (Aφ)
		Approximately 185' to WL #26
Contractor Install		Single Phase Padmount Transformer Foundation (per NBU Spec EU-530)
		(1) 3" Primary UG Conduit to WL #26 (Aφ, per NBU Spec EU-910)
		(1) 3" Secondary UG Conduit to WL #25A (per NBU Spec EU-910)
25A	Contractor Install	(1) 3" Secondary UG Conduit to WL #25B (per NBU Spec EU-910)
		(2) 3" Secondary UG Conduit Stubouts (per NBU Spec EU-910)
		Secondary Pullbox (per NBU Spec EU-210)
25B	Contractor Install	(3) 3" Secondary UG Conduit Stubouts (per NBU Spec EU-910)
		Secondary Pullbox (per NBU Spec EU-210)
		(3) 3" Secondary UG Conduit Stubouts (per NBU Spec EU-910)
26	NBU Note	Cap conduit and place marker