



ELECTRIC SPECIFICATION DRAWINGS

EU-320	Three Phase 4 Place 600 Amp, Primary Enclosure Pad	4/22
EU-325	Three Phase 3 Place 600 Amp, Primary Enclosure Pad	4/22
EU-330	Single Phase, Primary Enclosure Pad	10/18
EU-410	Standard Light Foundation	4/21
EU-500	Padmount Equipment Barrier Clearances	10/18
EU-501	Minimum Clearances From Padmount Equipment Pads	10/18
EU-505	Equipment Protection Bollard	10/18
EU-510	Three Phase Transformer Pad, 75 - 300 KVA	12/22
EU-515	Three Phase Transformer Pad, 75 - 2500 KVA	12/22
EU-520	Three Phase Transformer Pad, 500 - 2500 KVA	12/22
EU-530	Single Phase Transformer Pad	04/21
EU-710	Electrical Placement, Typical Easement, Option 1	03/19
EU-715	Electrical Placement, Typical Easement, Option 1.1	03/19
EU-720	Electrical Placement, Zero Lot Line Easement, Option 2	03/19
EU-725	Electrical Placement, Zero Lot Line Easement, Option 2.1	03/19
EU-730	Electrical Placement, Zero Lot Line Easement, Option 3	03/19
EU-735	Electrical Placement, Zero Lot Line Easement, Option 3.1	03/19
EU-740	Electrical Placement, Zero Lot Line Easement, Option 4	03/19
EU-745	Electrical Placement, Zero Lot Line Easement, Option 4.1	03/19
EU-800	Riser Pole Stub Out	12/20
EU-910	Underground Conduit Installation (Electric Only)	11/22
EU-915	Underground Conduit Installation (Common Trench)	11/22

This specification shall be used only in conjunction with the NBU Electrical Connection Policy and may not reflect all requirements of a specific installation.

Locations are determined by NBU. All customer installations require inspection by NBU.

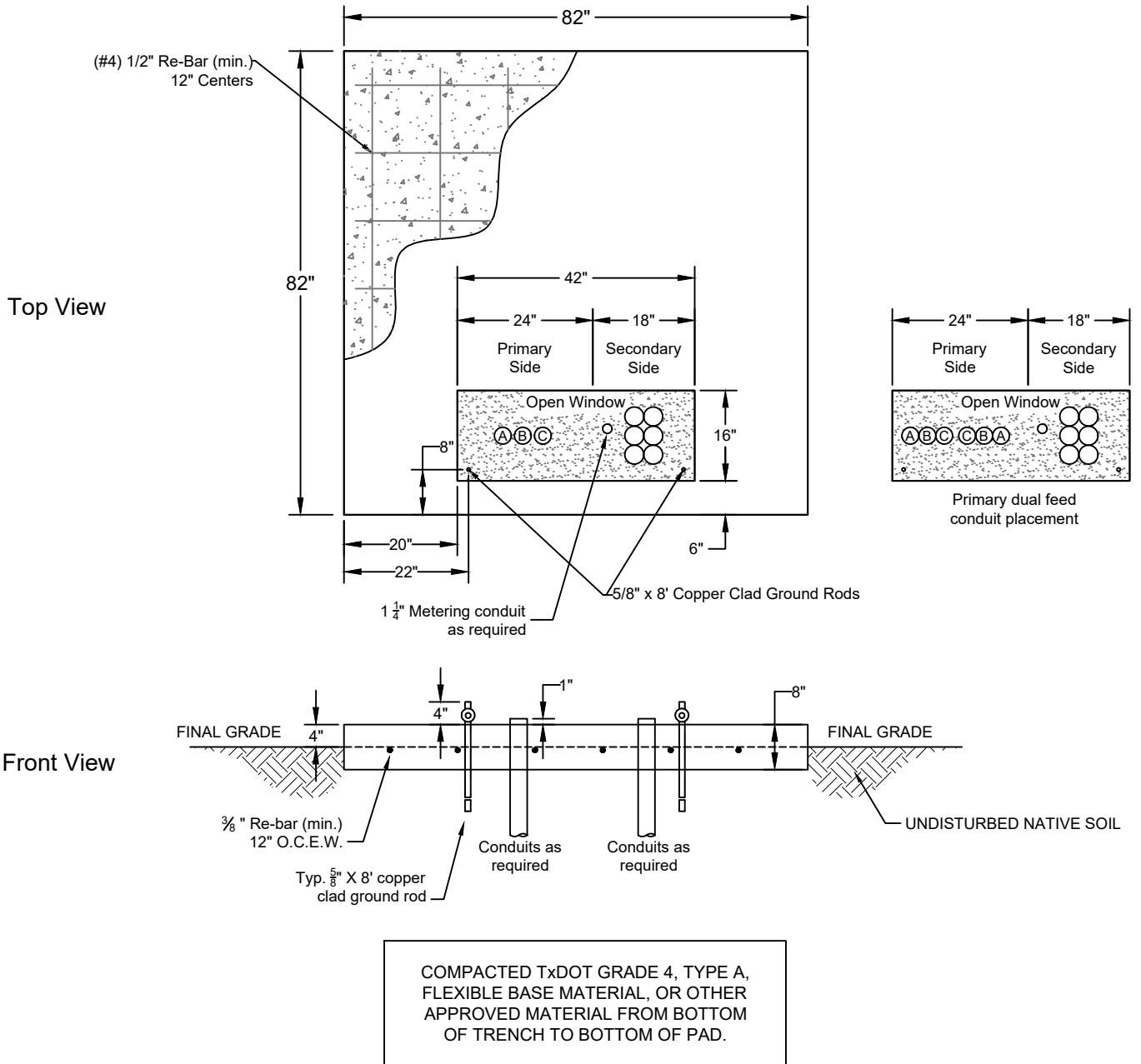
Underground conduit to be installed according to NBU specification EU-910. **Conduit to be sized by NBU** and have 1" projection above concrete, 36" radius, 90° sweeps. Pull string to be installed by customer.

Copper-clad ground rods, 5/8" x 8', 2 required, to have 4" projection above top on concrete.

Concrete shall be 3000 PSI minimum.

All primary and secondary stub outs shall be 10'-0" minimum.

Conduit positions, concrete forms, re-bar, and trench compaction to be approved by NBU before concrete is poured



Electric Engineering
 355 FM 306
 PO Box 310289
 New Braunfels, TX 78131-0289
 830-608-8951

**THREE PHASE TRANSFORMER PAD
 75 - 300 kVA**

ISSUED

12/22

SCALE

NTS

DRAWING NUMBER

EU-510

This specification shall be used only in conjunction with the NBU Electrical Connection Policy and may not reflect all requirements of a specific installation.

Locations are determined by NBU. All customer installations require inspection by NBU.

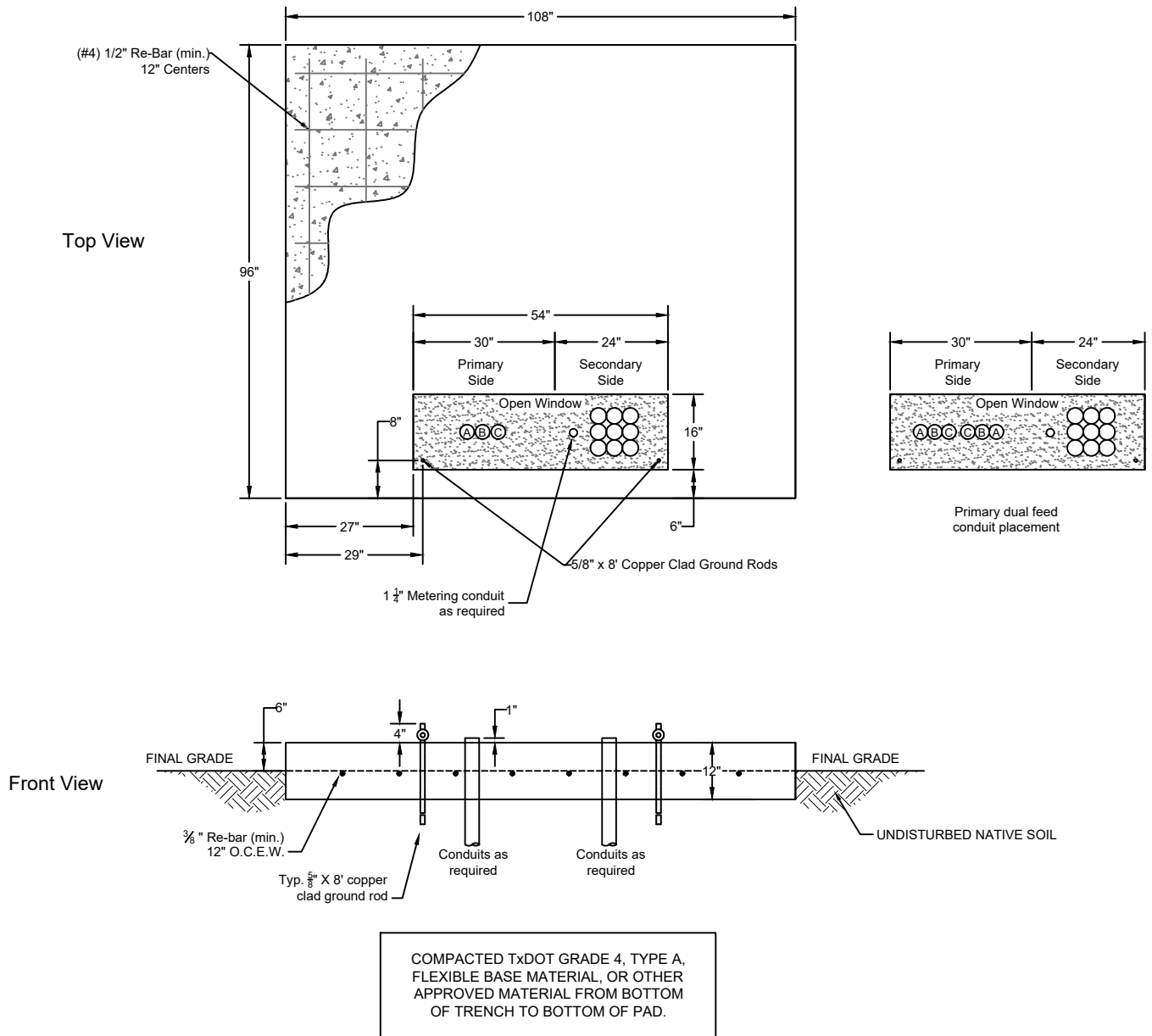
Underground conduit to be installed according to NBU specification EU-910. **Conduit to be sized by NBU** and have 1" projection above concrete, 36" radius, 90° sweeps. Pull string to be installed by customer.

Copper-clad ground rods, 5/8" x 8', 2 required, to have 4" projection above top on concrete.

Concrete shall be 3000 PSI minimum.

All primary and secondary stub outs shall be 10'-0" minimum.

Conduit positions, concrete forms, re-bar, and trench compaction to be approved by NBU before concrete is poured



Electric Engineering
 355 FM 306
 PO Box 310289
 New Braunfels, TX 78131-0289
 830-608-8951

THREE PHASE TRANSFORMER FOUNDATION
 500 - 2500 kVA

ISSUED	SCALE	DRAWING NUMBER
12/22	NTS	EU-520

This specification shall be used only in conjunction with the NBU Electrical Connection Policy and may not reflect all requirements of a specific installation.

Locations are determined by NBU Electrical Engineering. All customer installations require inspection by NBU.

Underground conduit installed according to NBU specification EU-910. **Conduit to be sized by NBU** and have 1" projection above top of concrete. Pull string to be installed by customer in each conduit.

Install #6 copper inside 1/2" conduit. Connect #6 copper to ground rod and leave 5' coil buried outside of slab at 12" depth.

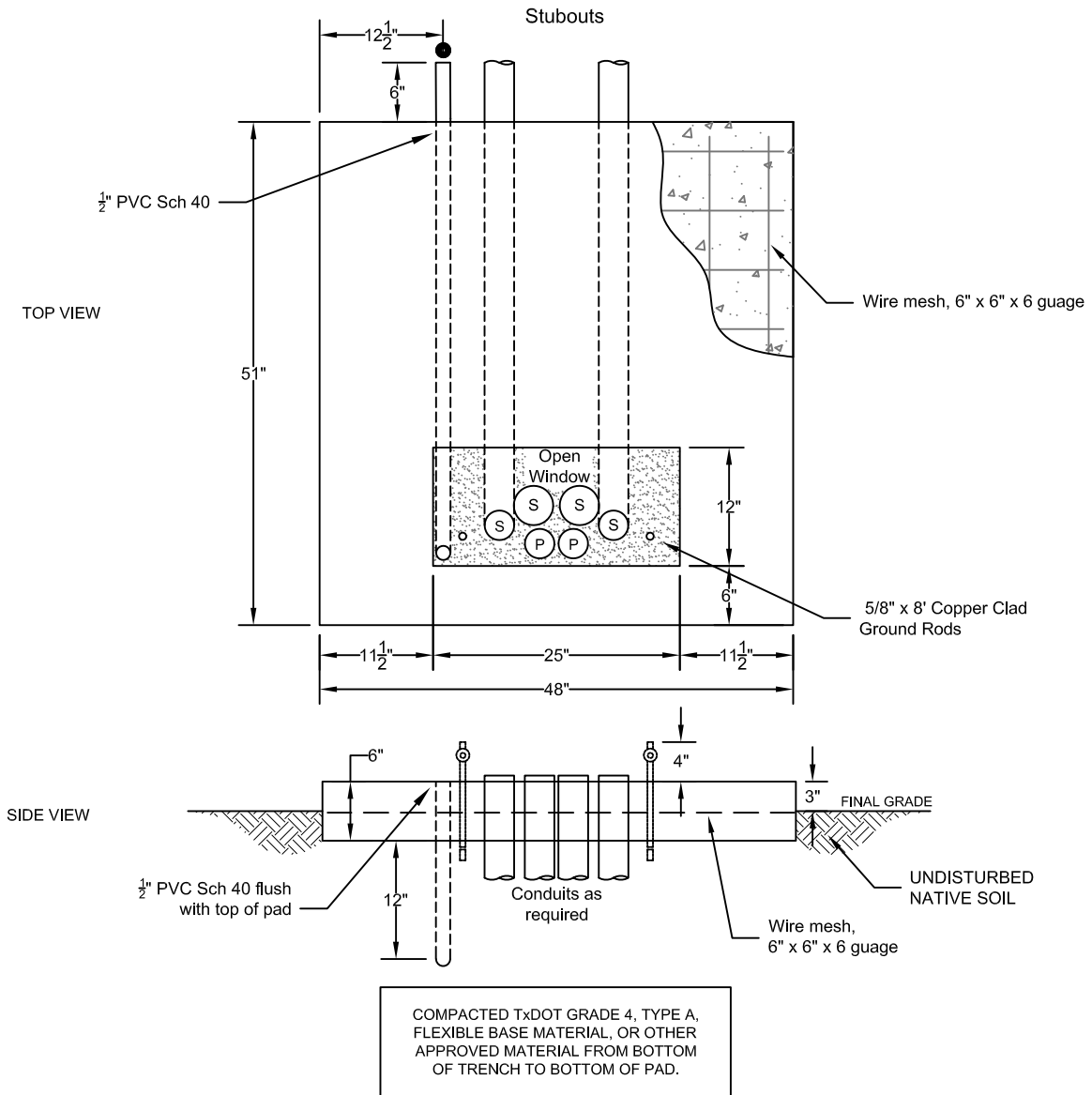
Copper-clad ground rods, 5/8" x 8", 2 required, to have 4" projection above top of concrete.

Concrete shall be 3000 PSI minimum.

All primary and secondary stub outs shall be 10'-0" minimum.

Conduit positions, concrete forms, re-bar, and trench compaction to be approved by NBU before concrete is poured

DiversiTech Part # F4851-62CL1225 suitable substitute for poured-in-place.



Electric Engineering
 355 FM 306
 PO Box 310289
 New Braunfels, TX 78131-0289
 830-608-8951

SINGLE PHASE TRANSFORMER PAD

ISSUED

04/21

SCALE

NTS

DRAWING NUMBER

EU-530