

\*\*\*\* INSTALL PRIMARY ELBOW ARRESTORS IN ALL PADMOUNT TRANSFORMERS AND PRIMARY ENCLOSURES THAT ARE AT THE END OF RADIAL FEEDS \*\*\*

\*\*\*\*FINAL LOCATION OF UNDERGROUND INFRASTRUCTURE (XFMR'S, PVC DUCT BANK, ETC) WILL BE COORDINATED WITH AND APPROVED AS PER NBU INSPECTOR

\* ACTUAL LOCATION OF UNDERGROUND ELECTRIC INFRASTRUCTURE UNKNOWN, NEED TO FIELD VERIFY & COORDINATE WITH NBU.

INSTALL ALL WATER TAP SERVICES AS PER CRYSTAL CLEAR WATER CONSTRUCTION DETAIL AS NOTED ON SHEET 4 OF THIS PROJECT PLAN SET.

ALL NON - NBU UD ELECTRIC INFRASTRUCTURE ( GAS - WATER - SEWER - ETC.) NOTED ON PROJECT PLAN SET DWG PROVIDED BY OTHERS.

\* ALL CONSTRUCTION NOTATIONS ON PROJECT DWG HAVE BEEN COORDINATED WITH AND APPROVED AS PER NBU ELECTRICAL ENGINEERING DEPT.

	LOTS PER PHASE	GATEHOUSE SUBD		
UNIT	"A" PHASE	"B" PHASE	"C" PHASE	# OF LOTS
UNIT 1	4	63	9	76
UNIT 2	21	11	57	89
UNIT 3	46	0	0	46
TOTAL	71	74	66	211

\*\*\* ALL UD SECONDARY STUB OUTS WILL BE 3" PVC IN SIZE AND MINIMUM 10' (FT.) IN LENGTH TO BACK EDGE OF EASEMENT.

LEGEND	
GREEN = EXISTING	
BLUE = NEW	
RED = REMOVE	
	SECONDARY ENCLOSURE W/ STUBOUT
	KVA TRANSFORMER W/ STUBOUT
	PRI PULL BOX WITH 3 OR 4 PLACE MOLD
	METAL POLE
	ANTIQUE STREET LIGHT
	STREET LIGHT
	30 1/0 PRIMARY AND/OR 4/0 PRIMARY
	10 1/0 PRIMARY
	500 SECONDARY
	350 SECONDARY
	1/0 SECONDARY
	4/0 SECONDARY
	STREET LIGHT CIRCUIT; 1 1/4" C WITH #12 UF
	30 PRIMARY STUB OUT
	10 PRIMARY STUB OUT

0 25 50 100  
SCALE (FEET)  
SHEET SIZE: 24" X 36"

CONDUCTOR			
INSTALLED			
4/0 UD PRIMARY JACKETED CONDUCTOR (3 - PHASE)	770	X	2310
1/0 UD PRIMARY JACKETED CONDUCTOR (SINGLE PHASE)	2140	X	2140
350 MCM UD TYP SECONDARY CONDUCTOR (SINGLE PHASE)	1760	X	1760
ELECTRIC EQUIPMENT			
INSTALLED			
50 KVA PADMOUNT XFMR		2	
75 KVA PADMOUNT XFMR		5	
UD SECONDARY ENCLOSURE		21	
3 - PLACE 3 - PHASE 200 AMP PRIMARY ENCLOSURE		1	
SINGLE PHASE PRIMARY ENCLOSURE		1	
30 UD PRIMARY RISER		1	
4/0 UD PRIMARY		1	

\*\*\* Trees must be planted no closer than 5' edge to edge to any buried electric line, so this means trees need to be centered no closer than 9' to the front property line for typical 200 Amp infrastructure areas.

\* AS PER DIG TESS LINE LOCATE MARKINGS-- POT HOLING AND/OR JET VACUUMING MAYBE REQUIRED IN PROJECT SCOPE OF WORK AT ALL WORK LOCATIONS.

PRELIMINARY  
NOT FOR CONSTRUCTION

\*\*\* THE QUANTITIES SHOWN ON THE PLANS AND THE BID DOCUMENTS ARE ESTIMATED QUANTITIES AND BASED ON THE PLAN SET AND TO BE USED FOR BIDDING PURPOSE ONLY. THE CONTRACTOR IS RESPONSIBLE FOR DETERMINING ACTUAL QUANTITIES. THE CONTRACTOR SHALL BE RESPONSIBLE TO RESOLVE ANY PERCEIVED DISCREPANCIES IN THE QUANTITIES WITH THE OWNER PRIOR BEGINNING ANY CONSTRUCTION WORK.

M&S ENGINEERING  
CIVIL | ELECTRICAL | STRUCTURAL | MEP  
TEXAS REGISTERED ENGINEERING FIRM  
F-1394

ELECTRIC ENGINEERING		NOTES		PROJECT LOCATION	
DATE: 12/11/2024	BY: J. KRAUSE	DESCRIPTION: GATEHOUSE SUBDIVISION UNIT 3 UD	SCALE: 1" = 50'	REV: 0	DATE: 12/11/2024
DATE: 12/11/2024	BY: J. KRAUSE	DESCRIPTION: GATEHOUSE SUBDIVISION UNIT 3 UD	SCALE: 1" = 50'	REV: 1	DATE: 12/11/2024
DATE: 12/11/2024	BY: J. KRAUSE	DESCRIPTION: GATEHOUSE SUBDIVISION UNIT 3 UD	SCALE: 1" = 50'	REV: 2	DATE: 12/11/2024



MATCHLINE - REFER TO SHEET 1

Date: 12/11/2024 8:44 AM User: JUSTIN KRAUSE  
File: T:\NBU\FY 2024\UD\GATEHOUSE SUBDIVISION UNIT 3 UD.DWG

\*\*\*\* INSTALL PRIMARY ELBOW ARRESTORS IN ALL PADMOUNT TRANSFORMERS AND PRIMARY ENCLOSURES THAT ARE AT THE END OF RADIAL FEEDS \*\*\*\*

\*\*\*\*FINAL LOCATION OF UNDERGROUND INFRASTRUCTURE (XFMR'S, PVC DUCT BANK, ETC) WILL BE COORDINATED WITH AND APPROVED AS PER NBU INSPECTOR

**INSTALL ALL WATER TAP SERVICES  
AS PER CRYSTAL CLEAR WATER  
CONSTRUCTION DETAIL  
AS NOTED ON SHEET 4 OF THIS  
PROJECT PLAN SET.**

**ALL NON - NBU UD ELECTRIC INFRASTRUCTURE ( GAS -  
WATER - SEWER - ETC.)  
NOTED ON PROJECT PLAN SET DWG PROVIDED BY OTHERS.**

**\* AS PER DIG TESS LINE LOCATE MARKINGS-- POT HOLING AND/OR JET VACUUMING  
MAYBE REQUIRED IN PROJECT SCOPE OF WORK AT ALL WORK LOCATIONS.**

**\* ACTUAL LOCATION OF UNDERGROUND  
ELECTRIC INFRASTRUCTURE UNKNOWN,  
NEED TO FIELD VERIFY & COORDINATE  
WITH NBU.**

**\* ALL CONSTRUCTION NOTATIONS ON PROJECT DWG HAVE  
BEEN COORDINATED WITH AND APPROVED  
AS PER NBU ELECTRICAL ENGINEERING DEPT.**

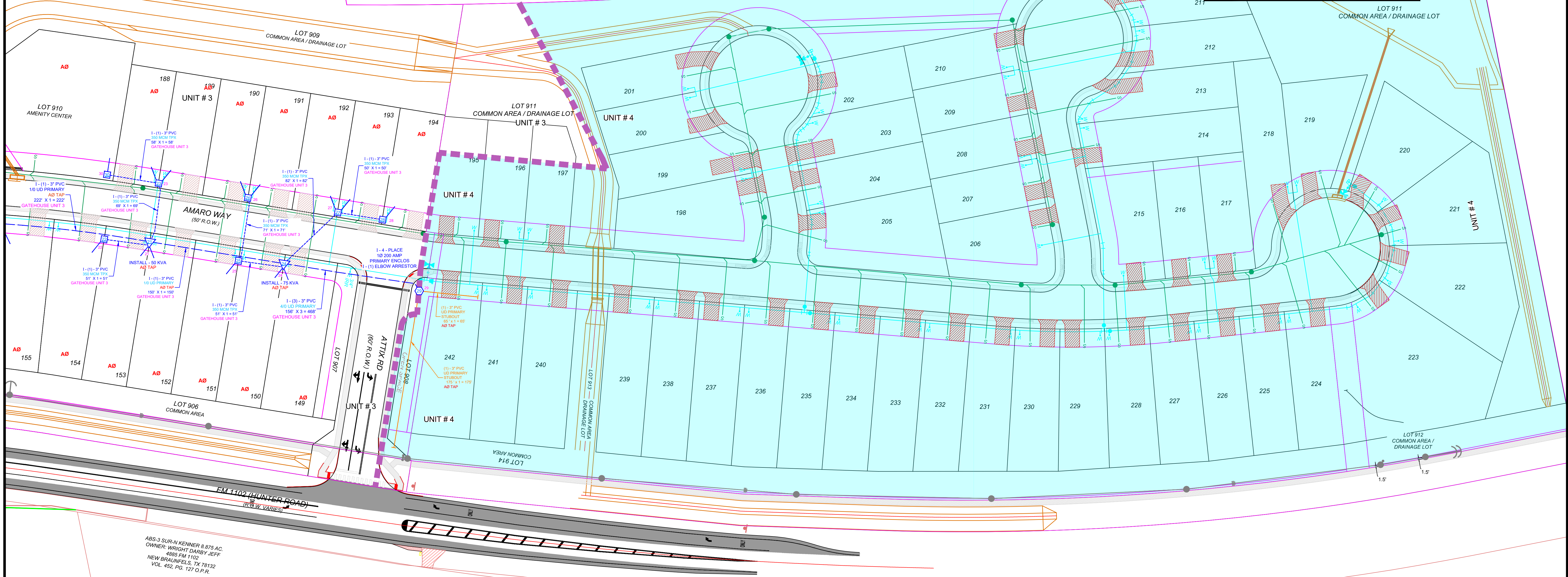
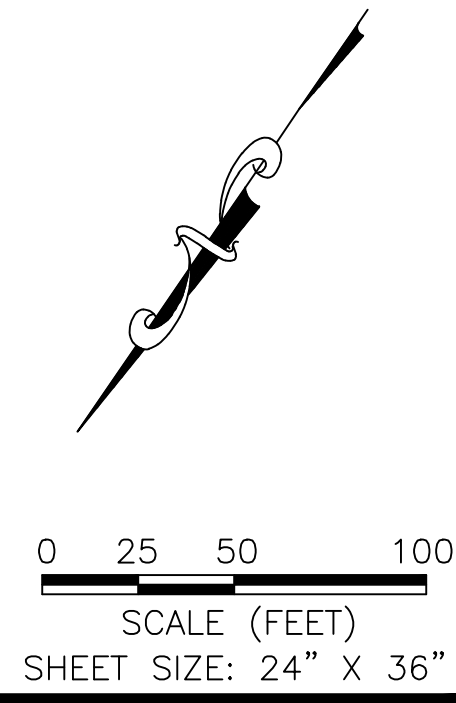
**\*\*\*ALL UD SECONDARY STUB OUTS WILL BE 3" PVC  
IN SIZE AND MINIMUM 10' (FT.) IN LENGTH TO  
BACK EDGE OF EASEMENT.**

**LEGEND**

GREEN = EXISTING  
BLUE = NEW  
RED = REMOVE

SECONDARY ENCLOSURE W/ STUBOUT  
KVA TRANSFORMER W/ STUBOUT  
PRI PULL BOX WITH 3 OR 4 PLACE MOLD  
METAL POLE  
ANTIQUE STREET LIGHT  
STREET LIGHT

3Ø 1/0 PRIMARY AND/OR 4/0 PRIMARY  
1Ø 1/0 PRIMARY  
500 SECONDARY  
350 SECONDARY  
1/0 SECONDARY  
4/0 SECONDARY  
STREET LIGHT CIRCUIT; 1 1/4" C WITH #12 UF  
3Ø PRIMARY STUB OUT  
1Ø PRIMARY STUB OUT



ABS-3 SUR-IN KENNER 8.875 AC.  
OWNER: WRIGHT DARGY JEFF  
4885 FM 1102  
NEW BRAUNFELS, TX 78132  
VOL. 452, PG. 127 O.P.R.

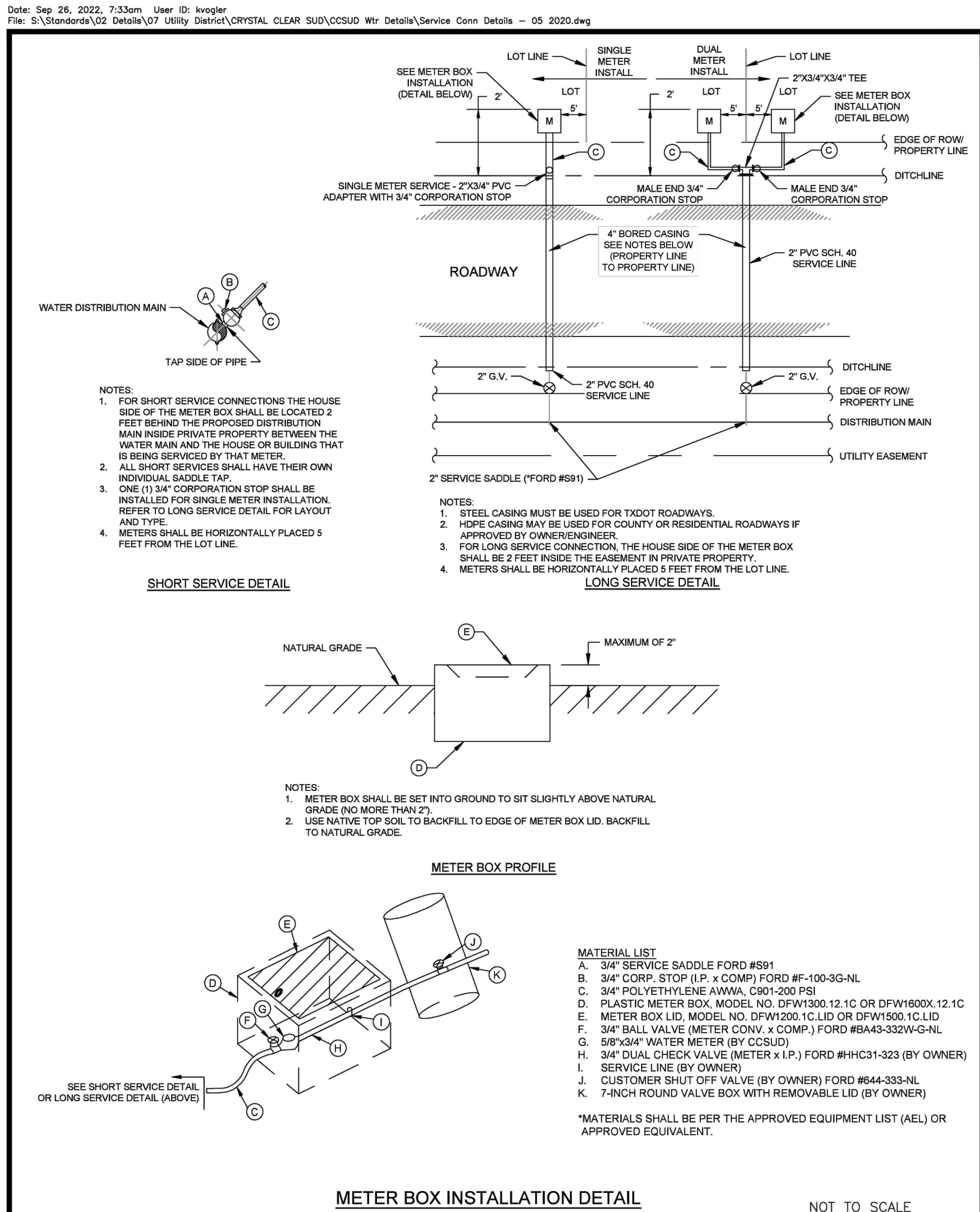
**\*\*\* Trees must be planted no closer than 5' edge to  
edge to any buried electric line, so this means trees  
need to be centered no closer than 9' to the front  
property line for typical 200 Amp infrastructure areas.**

**PRELIMINARY  
NOT FOR CONSTRUCTION**

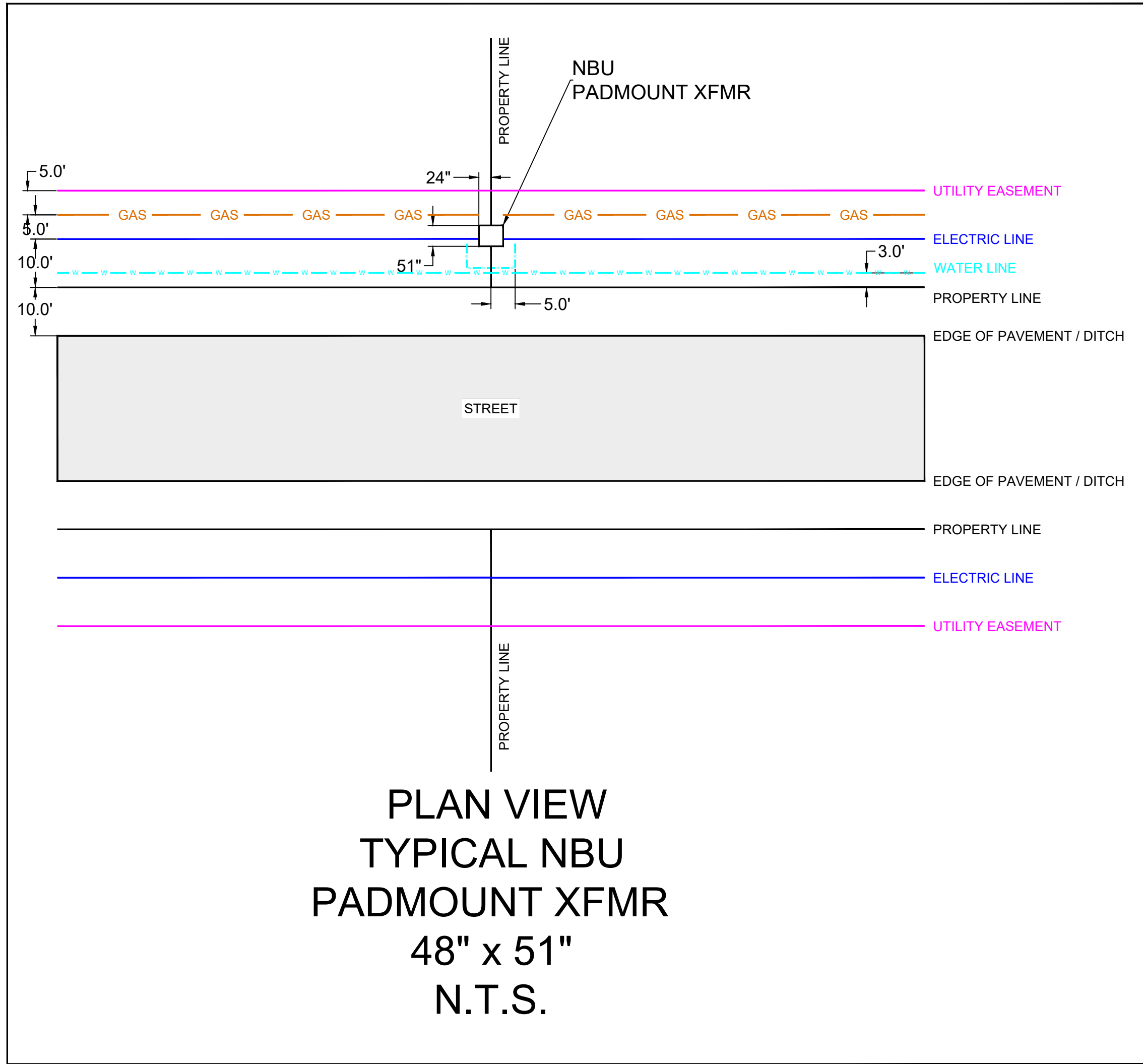
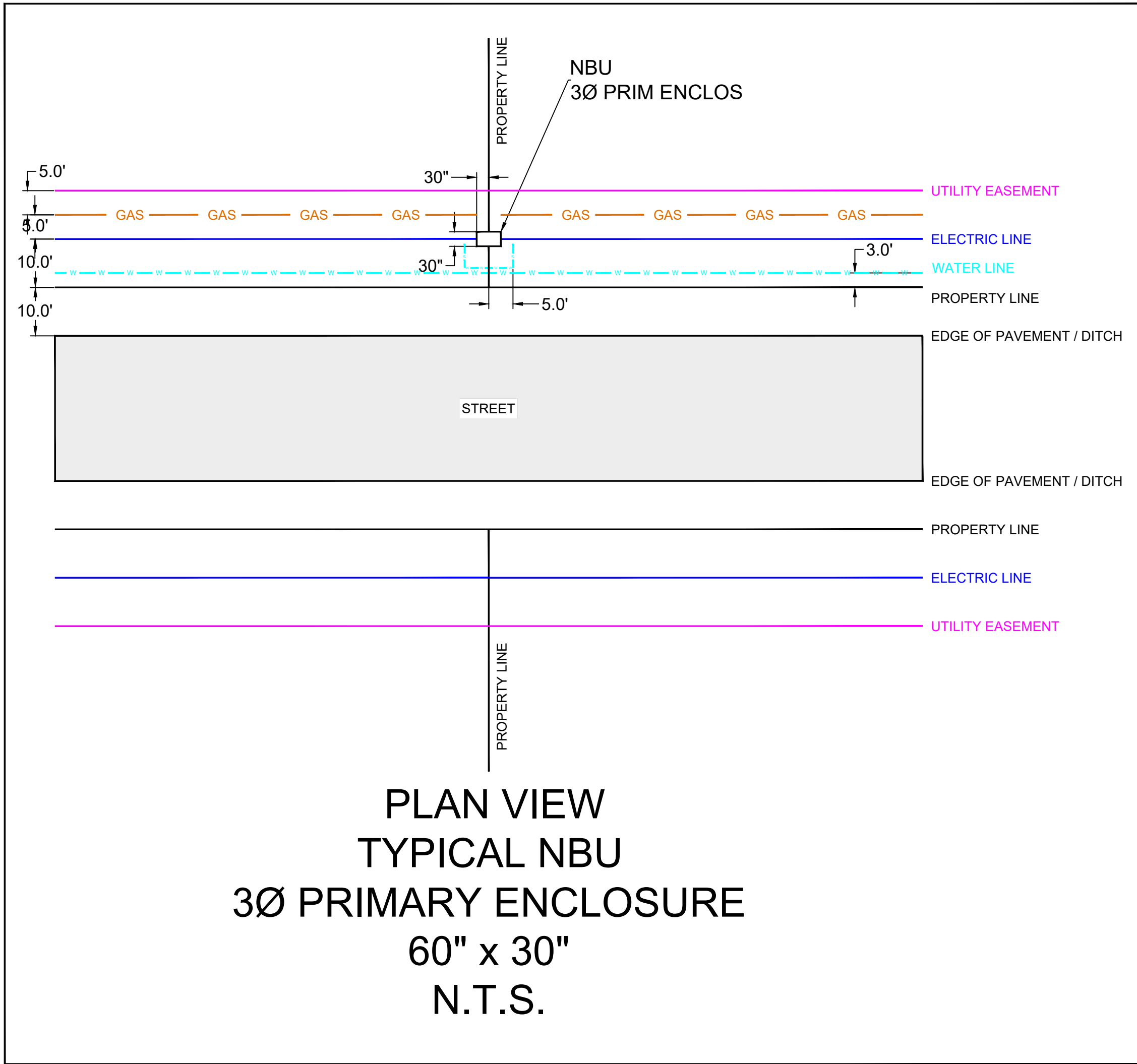
\*\*\* THE QUANTITIES SHOWN ON THE PLANS AND THE BID DOCUMENTS ARE ESTIMATED QUANTITIES AND BASED ON THE PLAN SET AND TO BE USED FOR BIDDING PURPOSE ONLY. THE CONTRACTOR IS RESPONSIBLE FOR DETERMINING ACTUAL QUANTITIES. THE CONTRACTOR SHALL BE RESPONSIBLE TO RESOLVE ANY PERCEIVED DISCREPANCIES IN THE QUANTITIES WITH THE OWNER PRIOR BEGINNING ANY CONSTRUCTION WORK.

	<b>M&amp;S ENGINEERING</b> CIVIL   ELECTRICAL   STRUCTURAL   MEP TEXAS REGISTERED ENGINEERING FIRM F-1394		<b>PROJ TITLE: GATEHOUSE SUBDIVISION UNIT 3 UD</b>		
	ELECTRIC ENGINEERING 305 FM 108 P.O. BOX 310289 NEW BRAUNFELS, TEXAS 78131 830-608-8551		PROJ NO. REV NO. REV BY. ISSUE DATE		
	SCALE: 1" = 50'		12/11/2024		
	SHEET: 47 OF 66		J. KRAUSE		
PROJECT NO: I-C09EXT		PAGE: 2 OF XX		226754	







CRYSTAL CLEAR WATER  
DETAIL DENOTING  
WATER LINE SERVICE  
5' FROM LOT LINES'  
(NBU APPROVED)



SPECIFIC NBU STANDARD DETAILS AND/OR SPECIFICATIONS, AS REFERENCED IN THIS PLAN SET, HAVE BEEN REVIEWED AND AUTHORIZED BY USE FOR THIS PROJECT UNDER THE AUTHORITY OF BRIAN SCOTT MEUTH, TEXAS PE #80648. FOR FULL NBU STANDARD DETAILS AND SPECIFICATIONS, VISIT THEIR WEBSITE AT NBUTEXAS.COM

PRELIMINARY  
NOT FOR CONSTRUCTION

\*\*\* THE QUANTITIES SHOWN ON THE PLANS AND THE BID DOCUMENTS ARE ESTIMATED QUANTITIES AND BASED ON THE PLAN SET AND TO BE USED FOR BIDDING PURPOSE ONLY. THE CONTRACTOR IS RESPONSIBLE FOR DETERMINING ACTUAL QUANTITIES. THE CONTRACTOR SHALL BE RESPONSIBLE TO RESOLVE ANY PERCEIVED DISCREPANCIES IN THE QUANTITIES WITH THE OWNER PRIOR BEGINNING ANY CONSTRUCTION WORK.

 <b>M&amp;S ENGINEERING</b> CIVIL   ELECTRICAL   STRUCTURAL   MEP TEXAS REGISTERED ENGINEERING FIRM F-1394		ELECTRIC ENGINEERING 305 FM 108 P.O. BOX 310289 NEW BRUNSWICK, TEXAS 78131 830-608-8551		NOTES		PROJECT LOCATION GATEHOUSE SUBDIVISION UNIT 3 UD	
		DATE: 12/11/2024		SCALE: 1" = 20'		DATE: 12/11/2024	
		DRAWN BY: J. KRAUSE		CHECKED BY: J. KRAUSE		DATE: 12/11/2024	
		PROJECT NO: I-C09EXT		PAGE: 4 OF XX		SHEET: 226754	