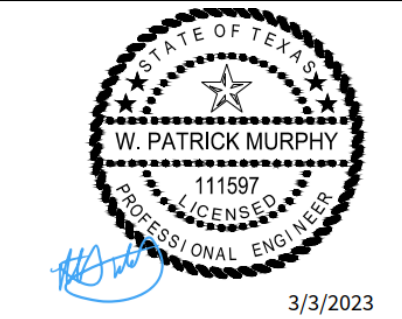


4122 Pond Hill Road, Suite 101
San Antonio, Texas 78231
P:(210) 681.2951 F:(210) 523.7112

GEORGE'S RANCH
4-WAY INLET STANDARD DETAILS

DATE
04/22/2022
PROJECT NO.
03546.001
DRAWN BY
AB/RR
CHECKED BY
WPM

REVISIONS	
1.	
2.	
3.	
4.	
5.	
6.	
7.	
8.	
9.	



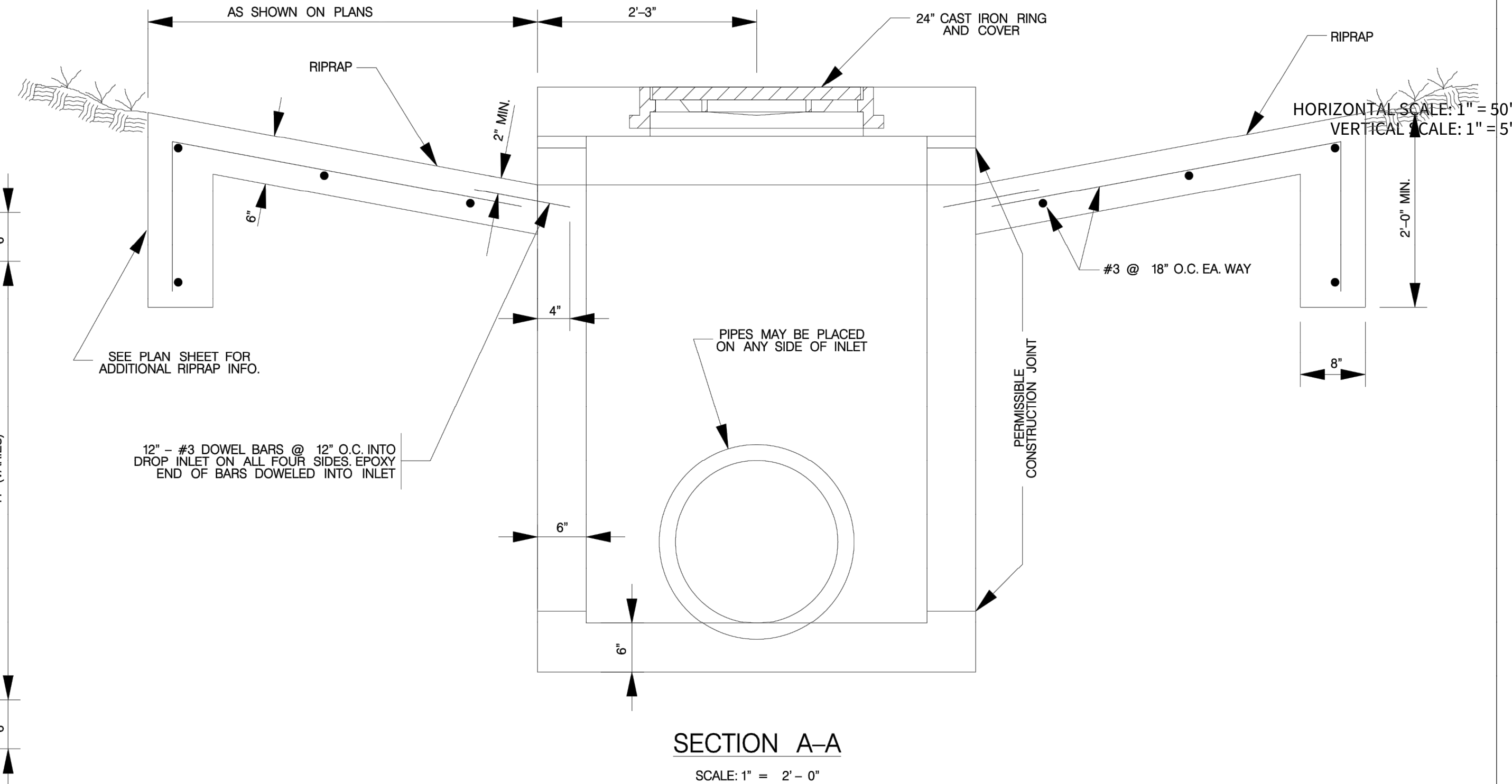
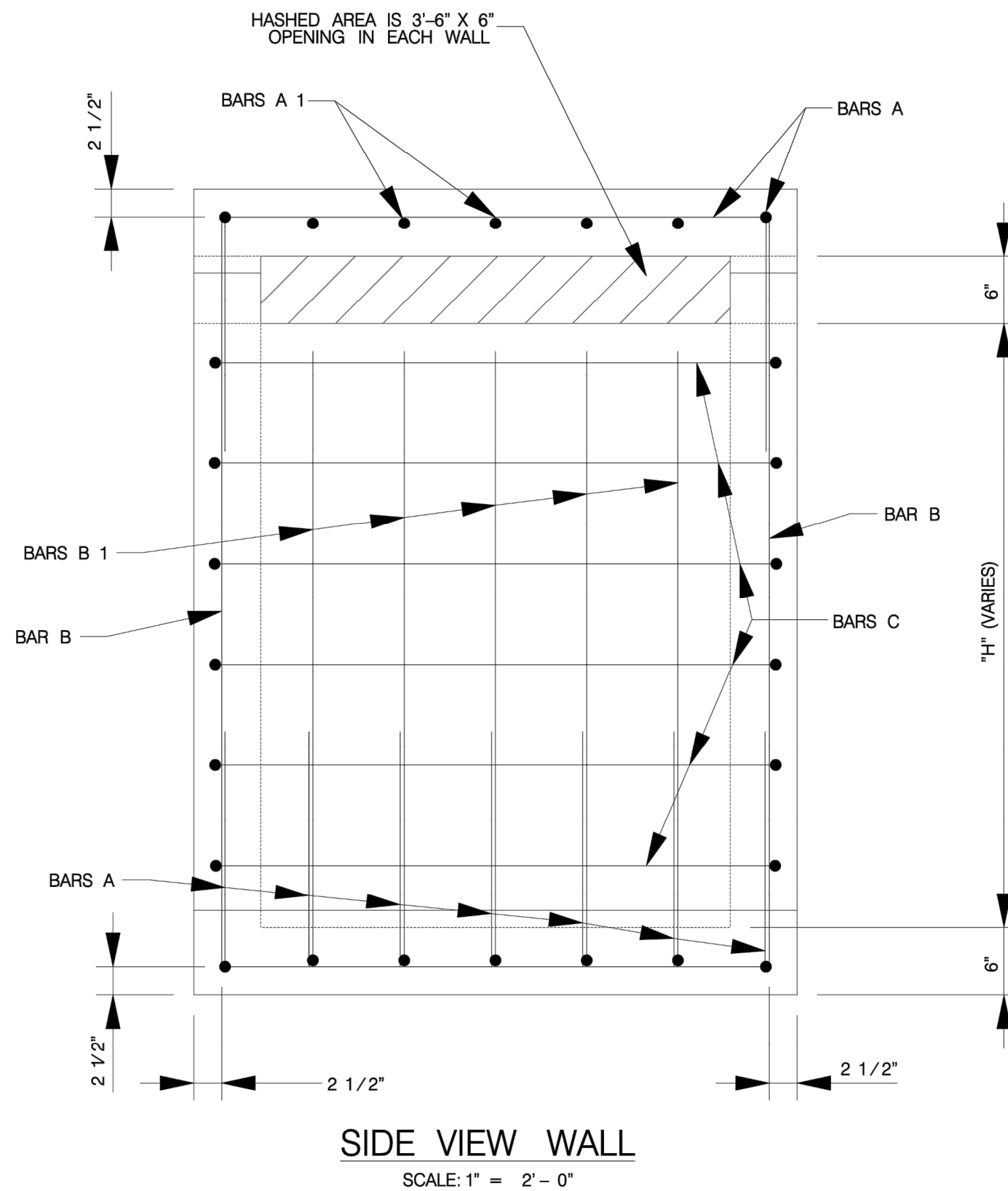
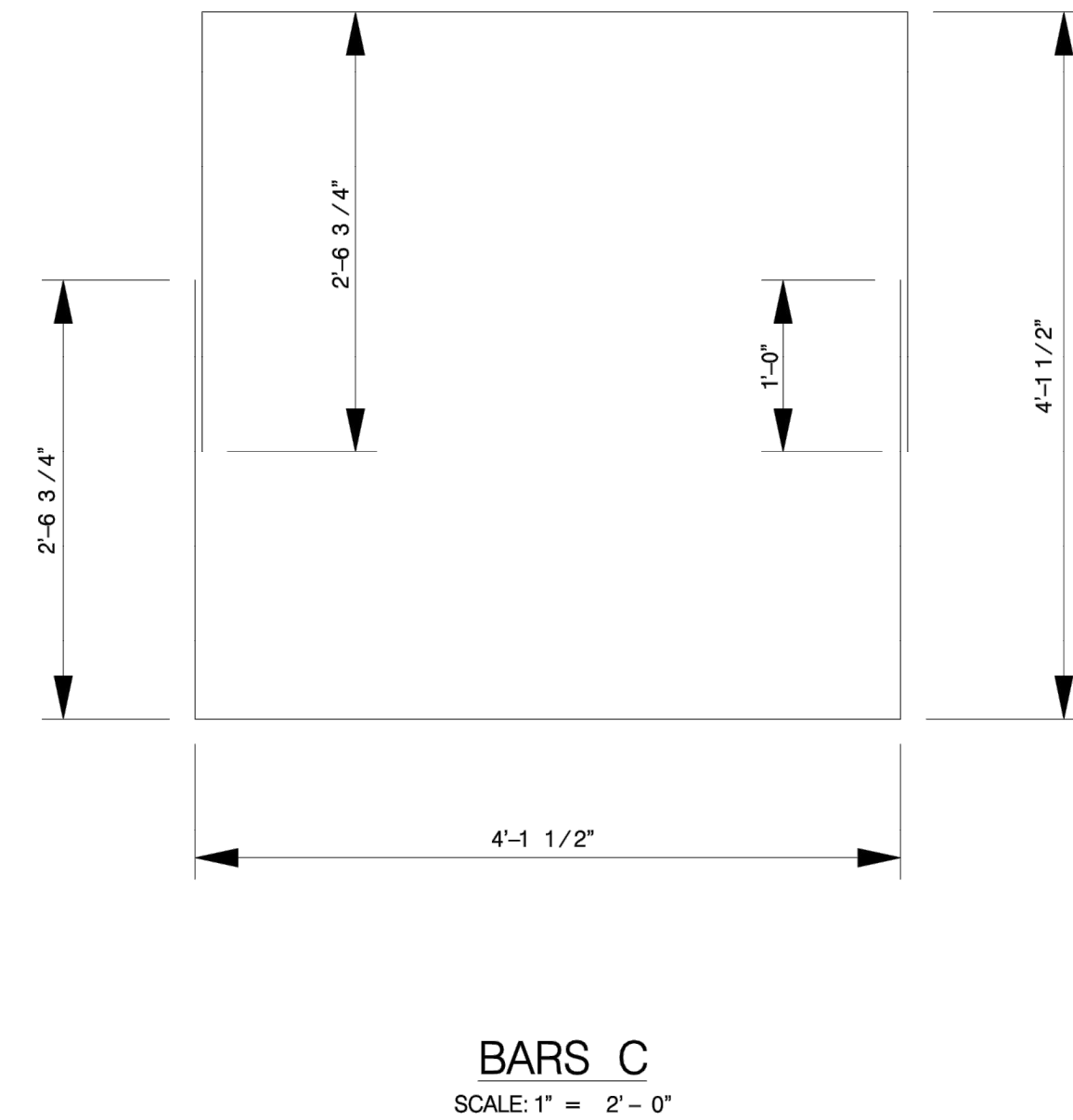
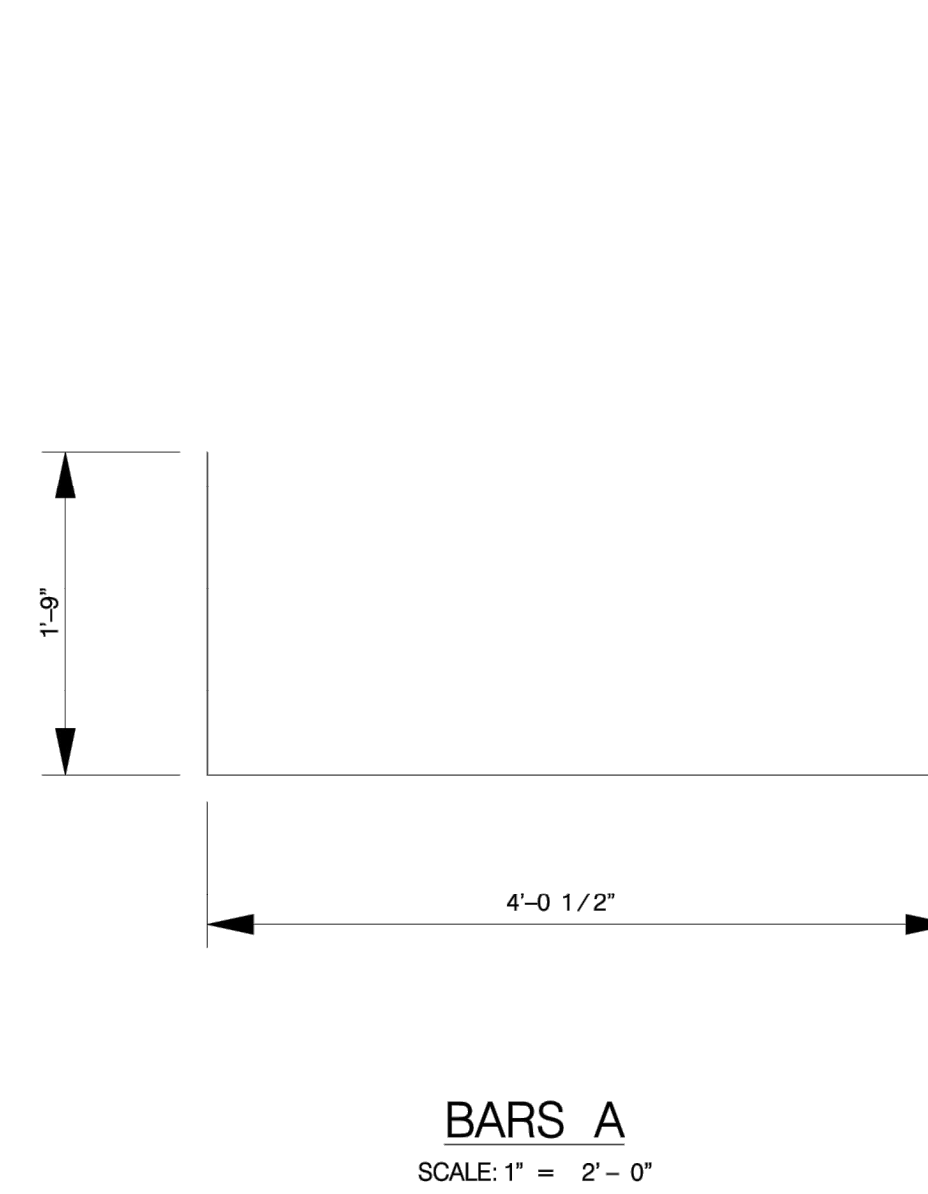
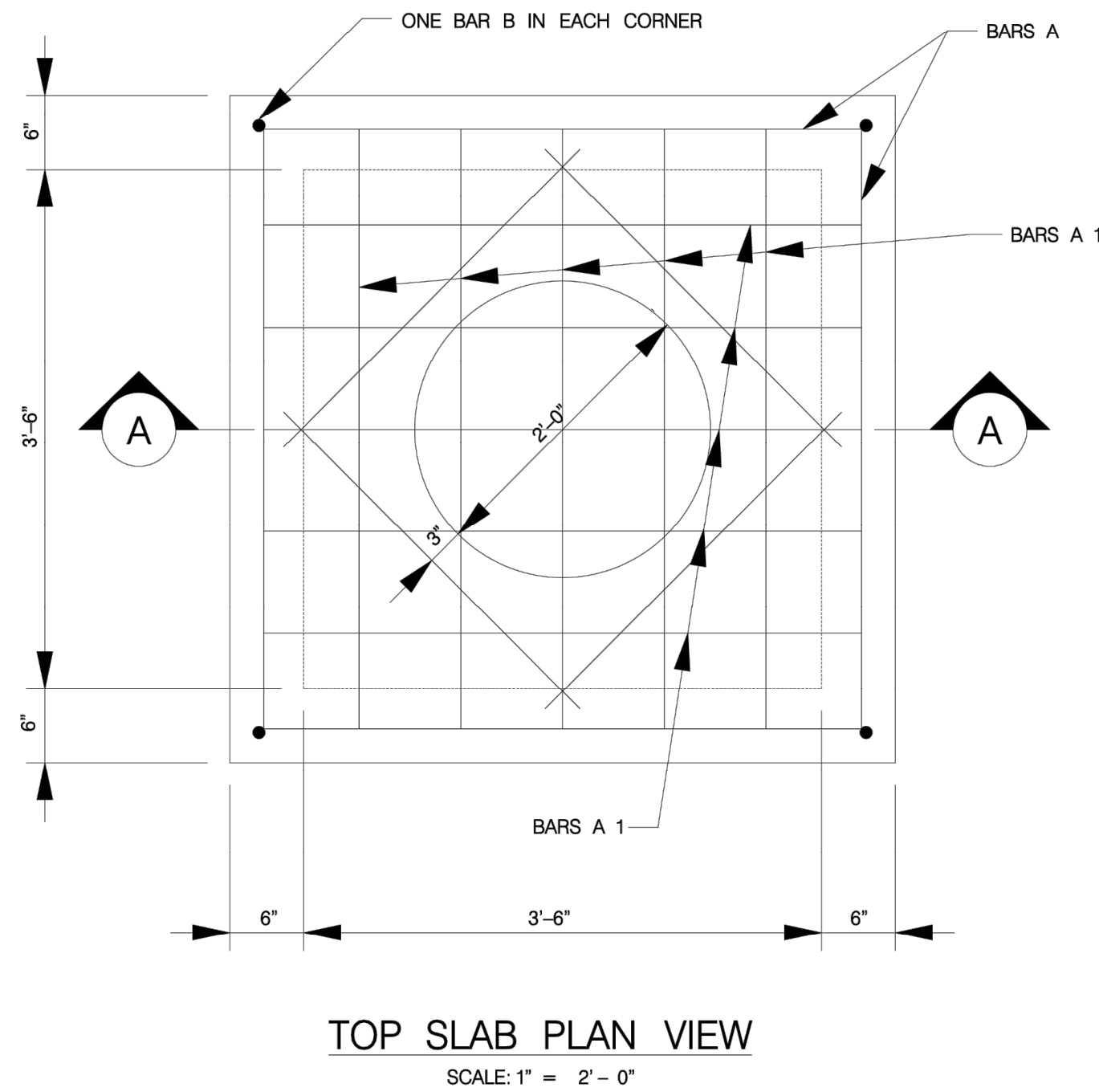
CUDE ENGINEERS
TBPE No. 455

PLAT NO.
N/A

C44A

NOTES FOR MANHOLE LID AND RING

- FOR LID DESIGN OUTSIDE OF CITY OF SAN ANTONIO, DELETE "SAN ANTONIO PUBLIC WORKS DEPT."
- CASTING NUMBER AND MANUFACTURER'S I.D. ON LID AND RING.
- LOAD BEARING CAPABILITY OF HS-20 MINIMUM.
- THE LOAD BEARING SURFACES SHALL BE MACHINE GROUND.
- MANHOLE TO BE INSTALLED TO CITY OF BOERNE SPECIFICATIONS
- MANHOLE DIAMETER TO BE 30" MIN.



ESTIMATED QUANTITIES FOR "H" = 4'-6"					
REINFORCING STEEL					
BAR	NO.	SIZE	SPACE	LENGTH	WEIGHT
A	18	4	8" +/-	7'-6 1/2"	79
A 1	10	4	8" +/-	4'-0 1/2"	27
B	4	4	AS SHOWN	5'-7"	15
B 1	20	4	8" +/-	4'-7"	61
C	12	4	9" +/-	18'-6"	148
J	4	4	AS SHOWN	2'-8"	6
TOTAL REINFORCING STEEL					336 Lbs. *
CLASS A CONCRETE					2.10 CY *

* FOR CONTRACTOR'S INFORMATION ONLY.
QUANTITIES VARY WITH "H".
SEE INLET & MANHOLE SUMMARY SHEETS FOR "H".

GENERAL NOTES:

- ALL BARS INTERCEPTING THE RING AND COVER OPENING AND PIPE OPENINGS. SHALL BE FIELD CUT
- CONCRETE SHALL BE CLASS "A", 3000 PSI IN 28 DAYS.
- ALL DIMENSIONS RELATING TO REINFORCING STEEL ARE TO CENTER OF BARS.
- ALL EXPOSED CORNERS SHALL HAVE 3/4" CHAMFER
- PAYMENT FOR ALL EXCAVATION, BACKFILLING, CONCRETE, REINFORCING STEEL, RING, AND COVER SHALL BE INCLUDED IN THE UNIT COST OF ITEM 403 "STORM SEWER JUNCTION BOXES AND INLETS".