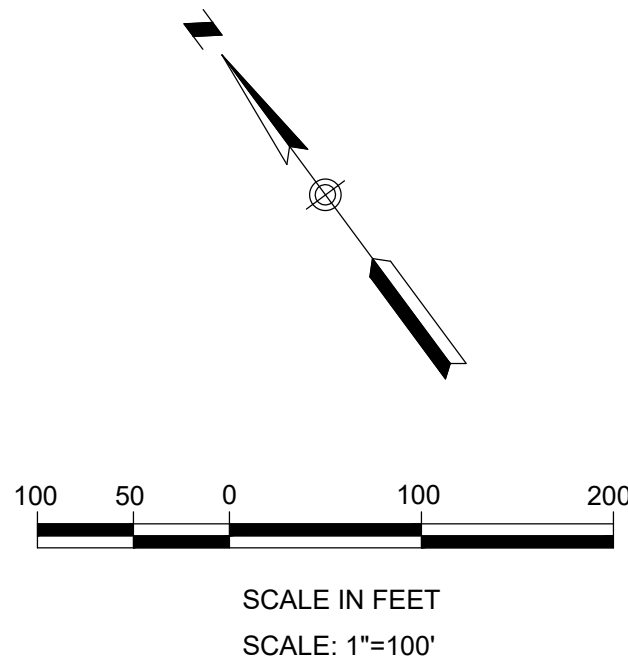
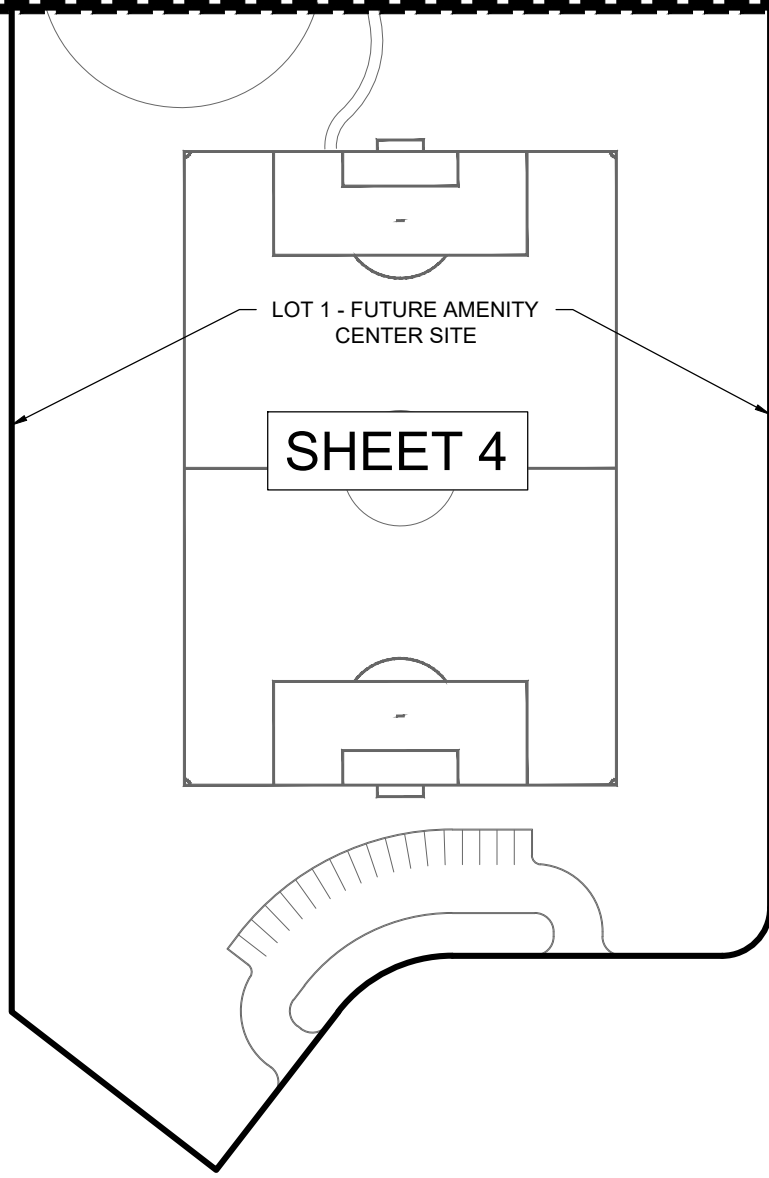


LOCATION MAP
N.T.S.

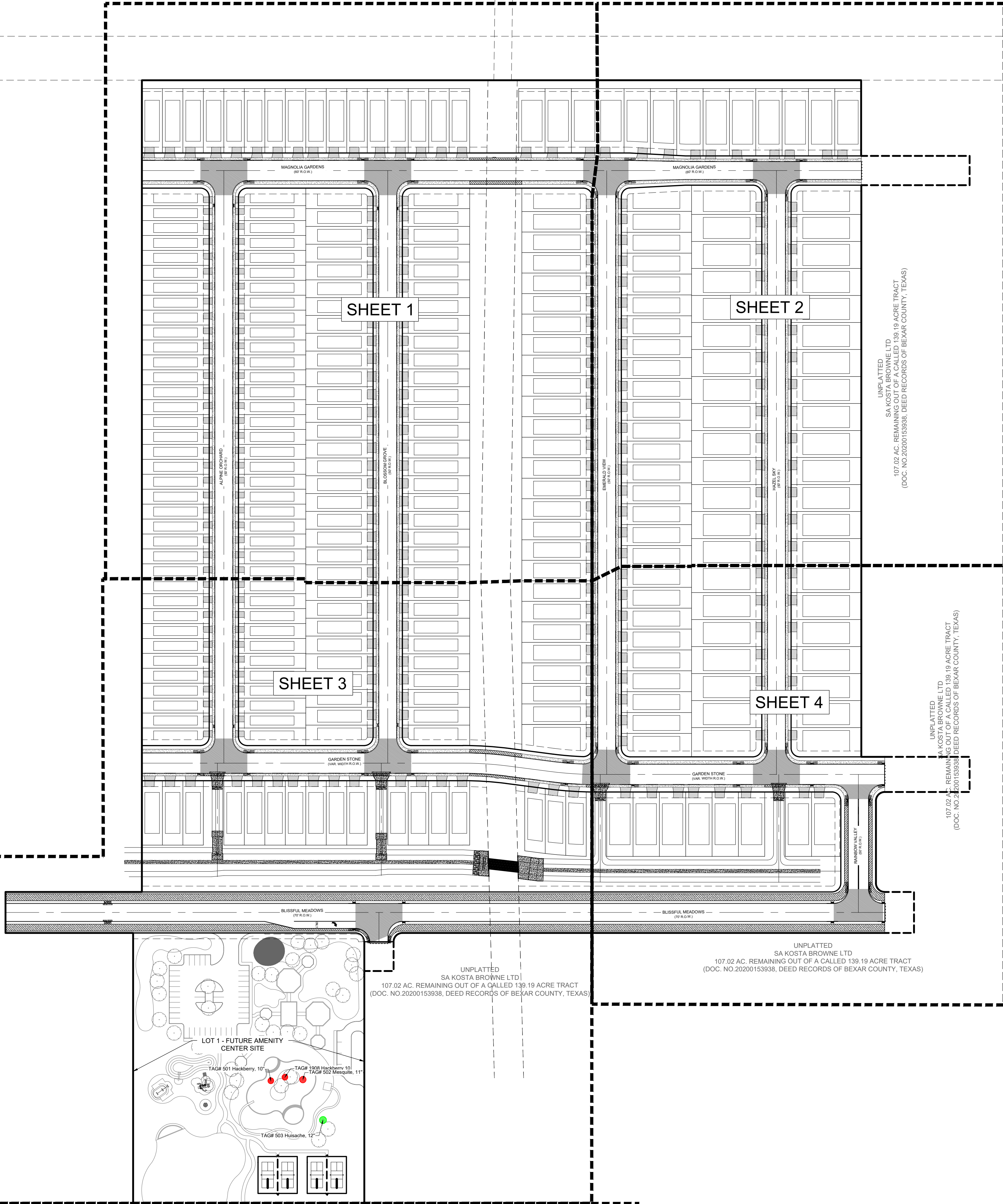


MATCHLINE (THIS SHEET RIGHT)



NOTES:

1. EACH TREE PLANTED SHALL BE ONE AND HALF (1.5) INCH CALIPER NEW TREES, WHICH SHALL GENERALLY BE NATIVE. LARGE CANOPY TREES WITH A MINIMUM SHADE AREA VALUE OF 875 EXCEPT WHERE OTHERWISE NOTED.
2. AS SHOWN HEREIN, TREES PLANTED ON SOUTH AND WEST SIDE OF BUILDINGS SHALL QUALIFY FOR ENERGY CONSERVATION CREDIT.
3. ALL PRESERVED AND PLANTED TREES SHALL BE MAINTAINED IN A HEALTHY CONDITION AT ALL TIMES. THIS INCLUDES IRRIGATING, FERTILIZING, PRUNING, AND OTHER MAINTENANCE AS NEEDED. TREES THAT DIE WITHIN TWELVE MONTHS SHALL BE REPLACED WITH A TREE OF COMPARABLE SIZE AND SPECIES. REGARDING REPLACEMENT OF PRESERVED TREES, SIGNIFICANT TREES SHALL BE REPLACED AT A 1:1 RATION (OR INCH-FOR-INCH) AND HERITAGE TREES SHALL BE REPLACED AT A 3:1 RATION (OR THREE-TO-ONE INCHES).
4. ALL TREE PROTECTION SHALL CONSIST OF LEVEL 1 FENCE PROTECTION UNLESS OTHERWISE NOTED.
5. TREE PLANTING SOIL REQUIREMENT NOTE: PER 35-523(M)(7), ALL TREE PLANTING SUBJECT TO SECTION 35-523(M) SHALL BE REQUIRED TO BE PLANTED IN SOIL THAT IS SUITABLE FOR ESTABLISHING AND SUSTAINING THE PLANTINGS. IN ADDITION TO CONTAINING SUITABLE SOIL PARTICLE SIZE AND DEPTH OF SOIL ZONE, THE SOIL MUST CONTAIN SUFFICIENT ORGANIC MATTER AND NUTRIENTS. TESTING AND CONFIRMATION BY A LANDSCAPE ARCHITECT, OR A TEXAS LICENSED SOIL TESTING FIRM SHALL BE COMPLETED TO ENSURE THE SOILS ARE SUITABLE. IN LIEU OF CONFIRMATION BY A LANDSCAPE ARCHITECT, OR A TEXAS LICENSED SOIL TESTING FIRM, SOIL MAY BE AMENDED WITH COMPOST BY ADDING THREE (3) INCHES OF COMPOST BLENDED INTO EVERYONE (1) FOOT OF SOIL. FOR COMPLETE SOIL REPLACEMENT, SUCH AS TREE PLANTINGS, AN AMOUNT OF TWENTY-FIVE (25) PERCENT COMPOST MAY BE ADDED TO SEVENTY-FIVE (75) PERCENT NATIVE SOIL.



MATCHLINE (THIS SHEET LEFT)

GRACE GARDENS SUBDIVISION UNIT 2
LAND-PLAT-24-11800119
OVERALL TREE PRESERVATION

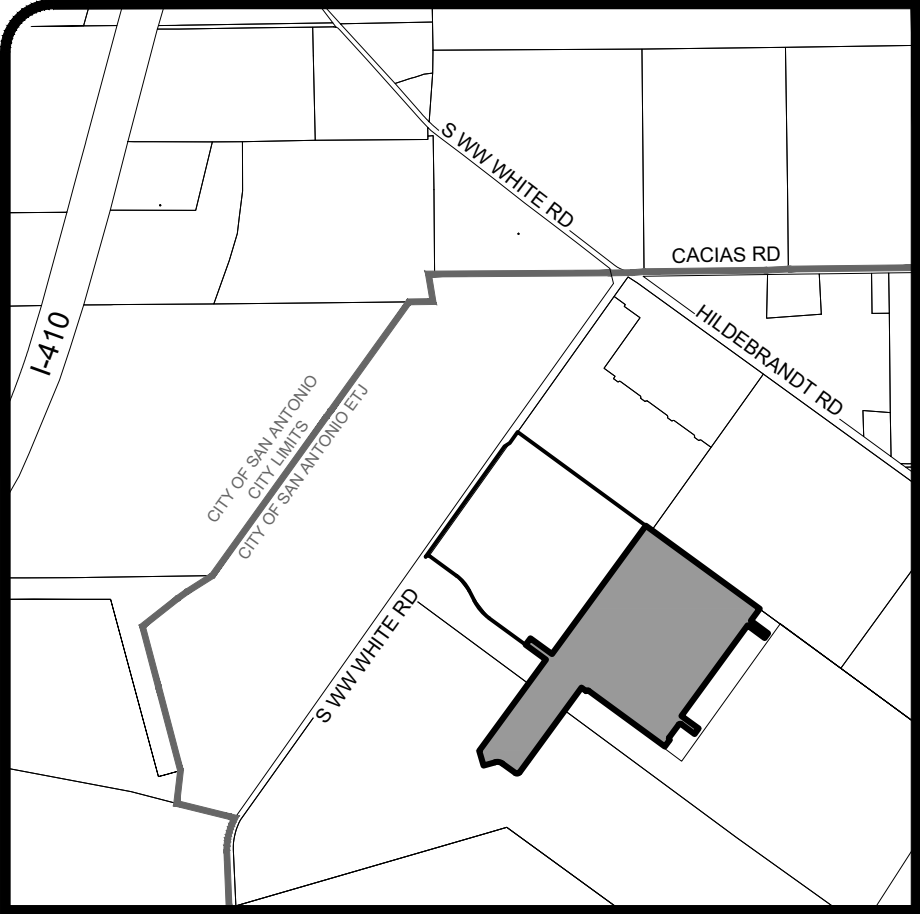
REVISIONS		NO.	DATE	BY	DESCRIPTION

LJA Engineering, Inc.
9830 Colonnade Blvd
Suite 300
San Antonio, Texas 78230
Phone 210.503.2700
LJA.COM
TPE No. F-1386

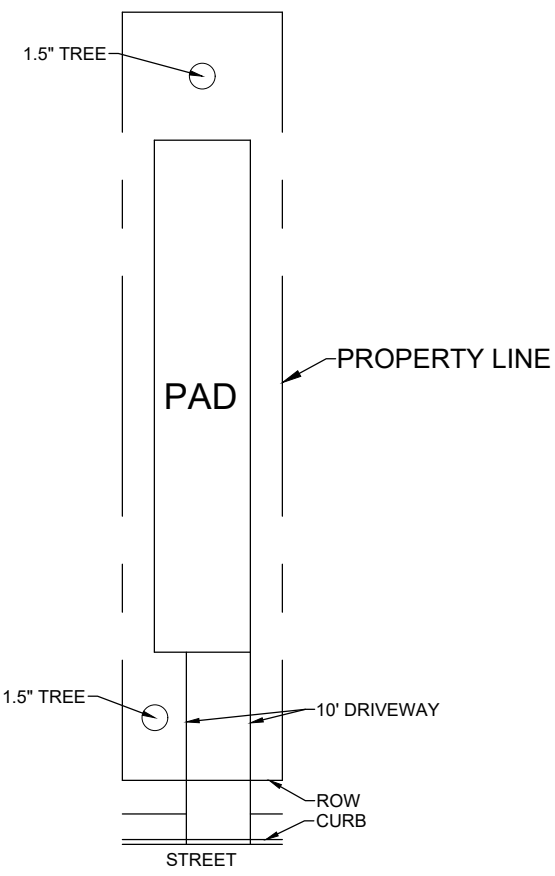
JOB NUMBER:
SA173-0402-426

SHEET NO.

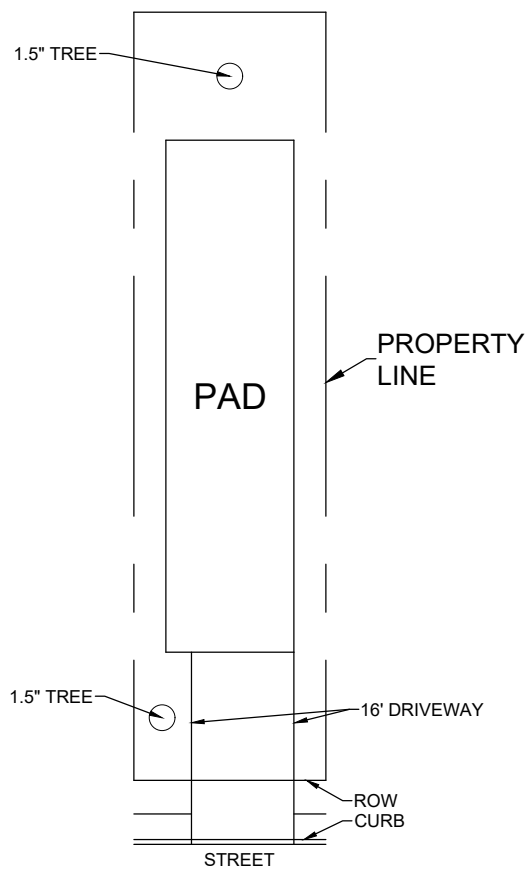
C:\Users\rburman\AppData\Local\Temp\AutoCAD_647188\sh_1\Tree_Preservation.dwg
User: rburman
Last Modified: Jan 10, 25 - 10:47
Plot Date/Time: Jan 10, 25 - 10:24:49



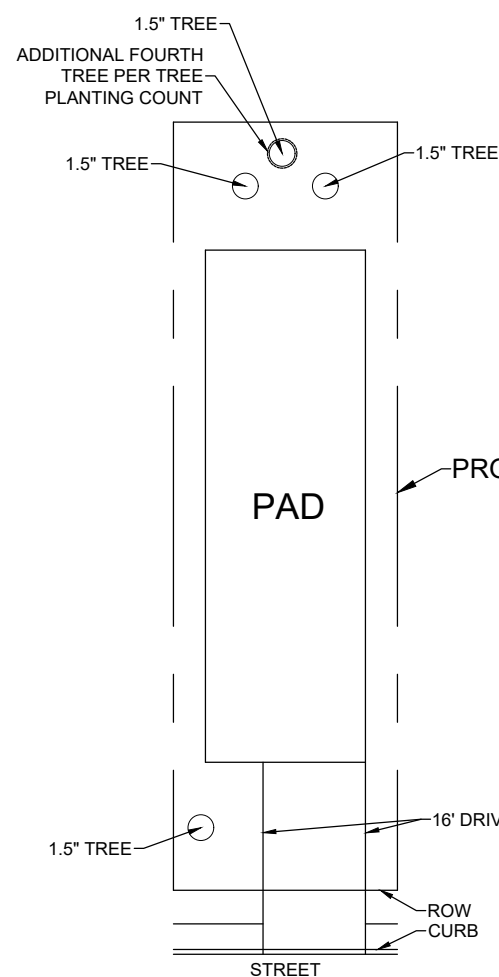
LOCATION MAP
N.T.S.



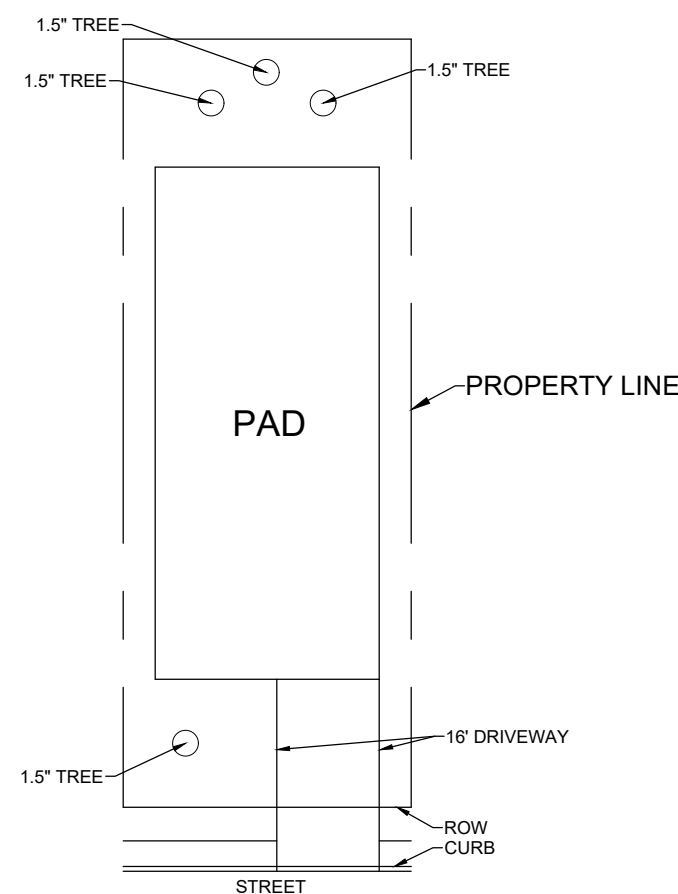
TYPICAL 25' LOT
N.T.S.



TYPICAL 30' LOT
N.T.S.



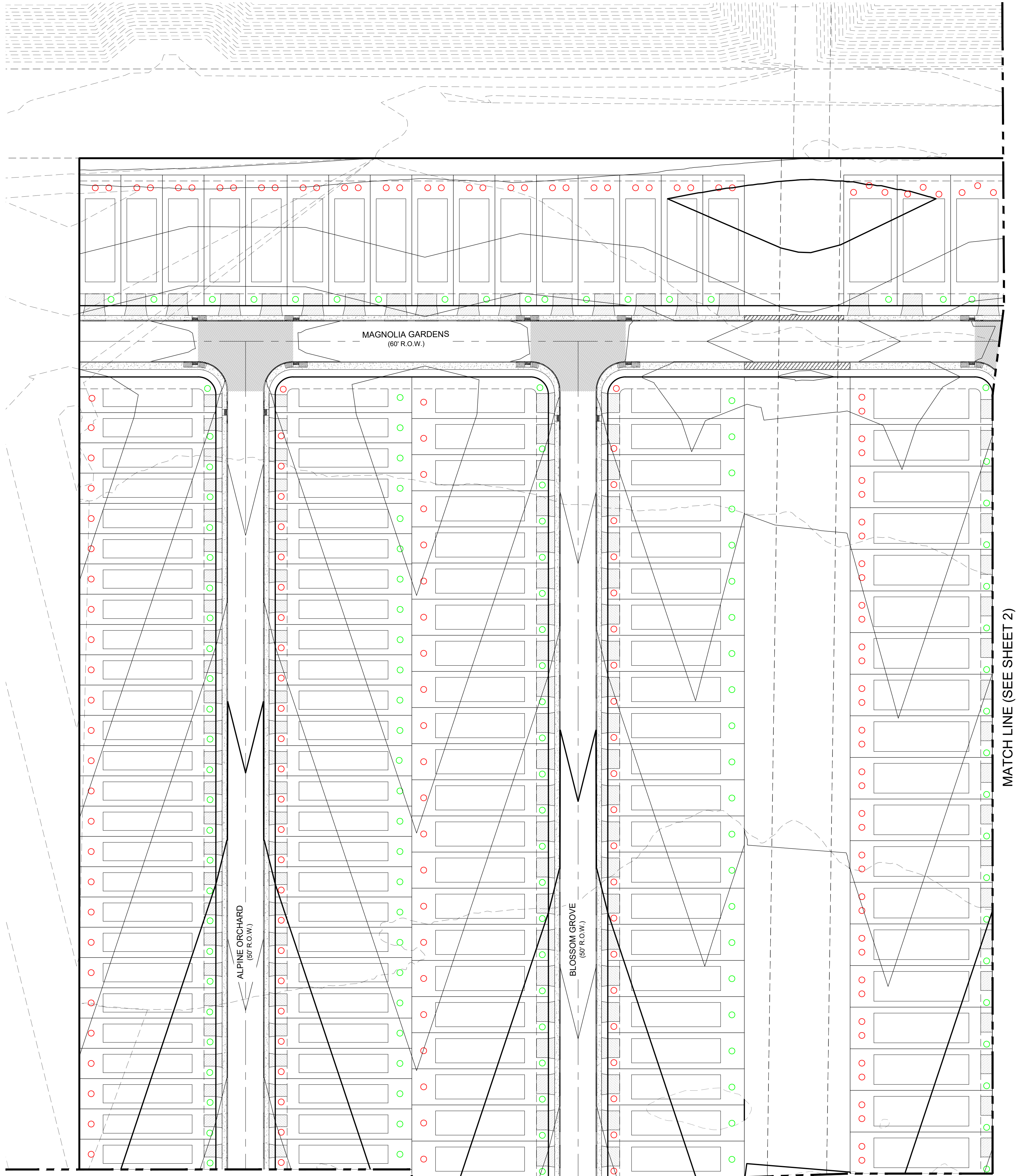
TYPICAL 35' LOT
N.T.S.



TYPICAL 45' LOT
N.T.S.

LEGEND

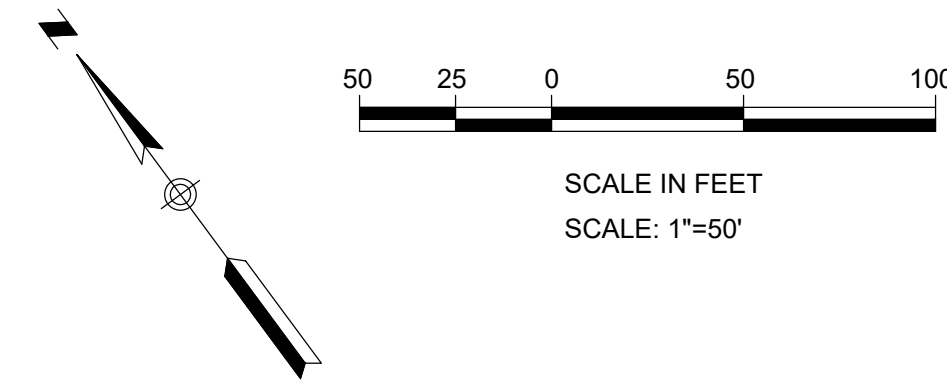
TP	TREE PROTECTION FENCING
	TREE (PRESERVE)
	TREE (REMOVE)
	HERITAGE TREE (PRESERVE)
	HERITAGE TREE (REMOVE)
	EXISTING CONTOUR
	PROPOSED CONTOUR
	PROPOSED FOUNDATIONS AND DRIVEWAYS
	PROPOSED TREE LOCATION (875 Sq. Ft.)
	PROPOSED TREE LOCATION (875 Sq. Ft.) (ENERGY CREDIT)
	OUT OF BOUNDS TREE



- NOTES:
- EACH TREE PLANTED SHALL BE ONE AND HALF (1.5) INCH CALIPER NEW TREES, WHICH SHALL GENERALLY BE NATIVE. LARGE CANOPY TREES WITH A MINIMUM SHADE AREA VALUE OF 875 EXCEPT WHERE OTHERWISE NOTED.
 - AS SHOWN HEREIN, TREES PLANTED ON SOUTH AND WEST SIDE OF BUILDINGS SHALL QUALIFY FOR ENERGY CONSERVATION CREDIT.
 - ALL PRESERVED AND PLANTED TREES SHALL BE MAINTAINED IN A HEALTHY CONDITION AT ALL TIMES. THIS INCLUDES IRRIGATING, FERTILIZING, PRUNING, AND OTHER MAINTENANCE AS NEEDED. TREES THAT DIE WITHIN TWELVE MONTHS SHALL BE REPLACED WITH A TREE OF COMPARABLE SIZE AND SPECIES. REGARDING REPLACEMENT OF PRESERVED TREES, SIGNIFICANT TREES SHALL BE REPLACED AT A 1:1 RATION (OR INCH-FOR-INCH) AND HERITAGE TREES SHALL BE REPLACED AT A 3:1 RATION (OR THREE-TO-ONE INCHES).
 - ALL TREE PROTECTION SHALL CONSIST OF LEVEL 1 FENCE PROTECTION UNLESS OTHERWISE NOTED.
 - TREE PLANTING SOIL REQUIREMENT NOTE: PER 35-523(M)(7), ALL TREE PLANTING SUBJECT TO SECTION 35-523(M) SHALL BE REQUIRED TO BE PLANTED IN SOIL THAT IS SUITABLE FOR ESTABLISHING AND SUSTAINING THE PLANTINGS. IN ADDITION TO CONTAINING SUITABLE SOIL PARTICLE SIZE AND DEPTH OF SOIL ZONE, THE SOIL MUST CONTAIN SUFFICIENT ORGANIC MATTER AND NUTRIENTS. TESTING AND CONFIRMATION BY A LANDSCAPE ARCHITECT, OR A TEXAS LICENSED SOIL TESTING FIRM SHALL BE COMPLETED TO ENSURE THE SOILS ARE SUITABLE. IN LIEU OF CONFIRMATION BY A LANDSCAPE ARCHITECT, OR A TEXAS LICENSED SOIL TESTING FIRM, SOIL MAY BE AMENDED WITH COMPOST BY ADDING THREE (3) INCHES OF COMPOST BLENDED INTO EVERYONE (1) FOOT OF SOIL. FOR COMPLETE SOIL REPLACEMENT, SUCH AS TREE PLANTINGS, AN AMOUNT OF TWENTY-FIVE (25) PERCENT COMPOST MAY BE ADDED TO SEVENTY-FIVE (75) PERCENT NATIVE SOIL.

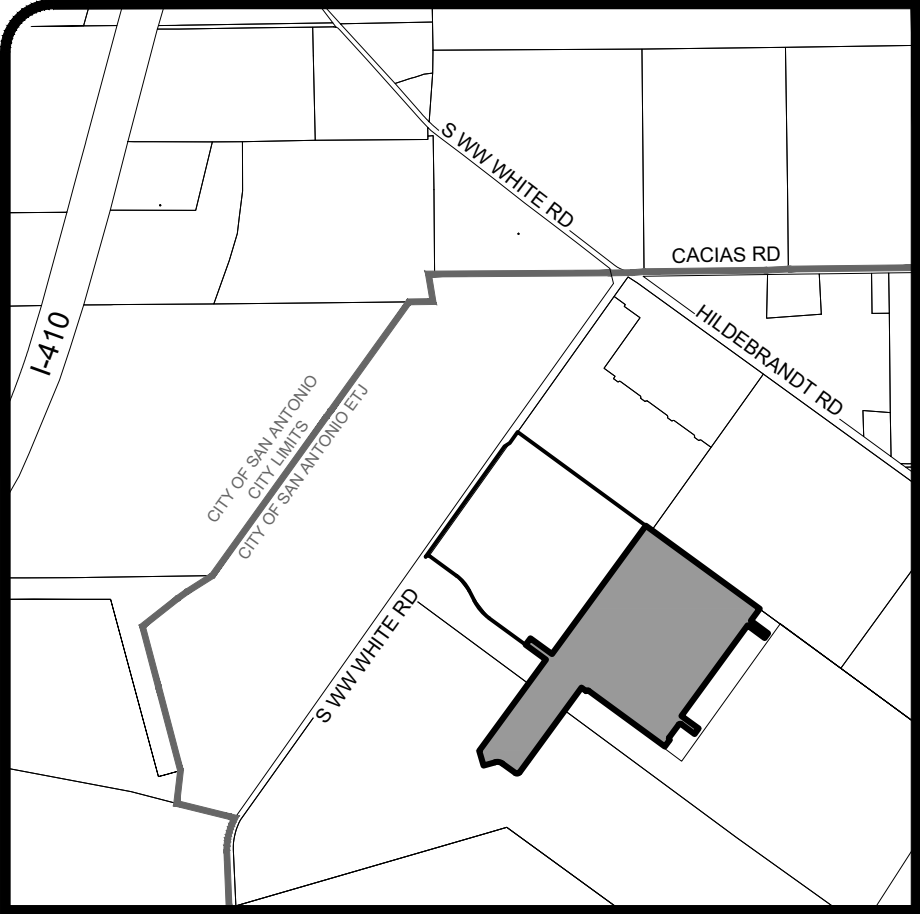
TREE PLANTING COUNT:

- ALL 286 LOTS SHALL RECEIVE 2 NEW 1.5" TREES.
- 35' LOTS SHALL RECEIVE (1) ADDITIONAL TREE (3 TOTAL) TO MEET CANOPY REQUIREMENTS.
- 45' LOTS SHALL RECEIVE (2) ADDITIONAL TREES (4 TOTAL) TO MEET CANOPY REQUIREMENTS.

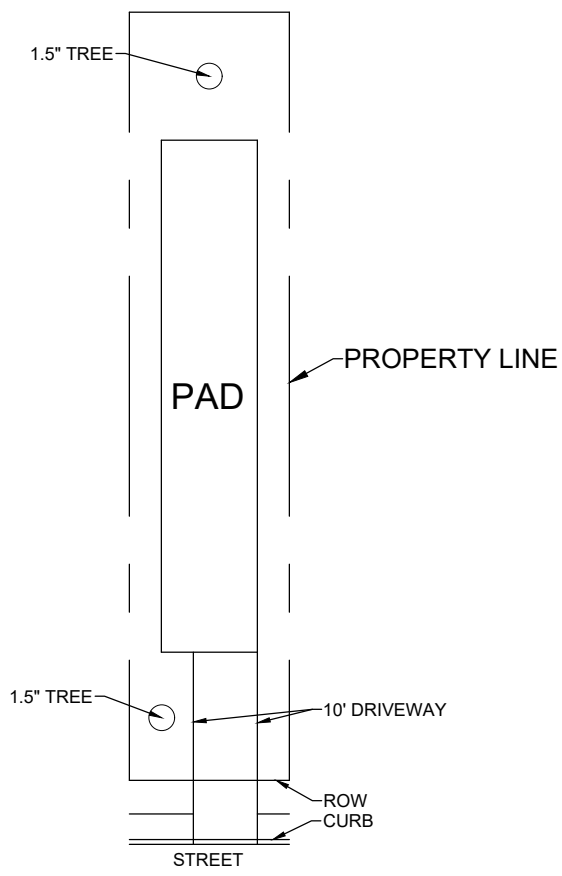


NO.	DATE	BY	REVISIONS
			DESCRIPTION
1	9/8/2023		
2			
3			
4			
5			
6			
7			
8			
9			
10			
11			
12			
13			
14			
15			
16			
17			
18			
19			
20			
21			
22			
23			
24			
25			
26			
27			
28			
29			
30			
31			
32			
33			
34			
35			
36			
37			
38			
39			
40			
41			
42			
43			
44			
45			
46			
47			
48			
49			
50			
51			
52			
53			
54			
55			
56			
57			
58			
59			
60			
61			
62			
63			
64			
65			
66			
67			
68			
69			
70			
71			
72			
73			
74			
75			
76			
77			
78			
79			
80			
81			
82			
83			
84			
85			
86			
87			
88			
89			
90			
91			
92			
93			
94			
95			
96			
97			
98			
99			
100			

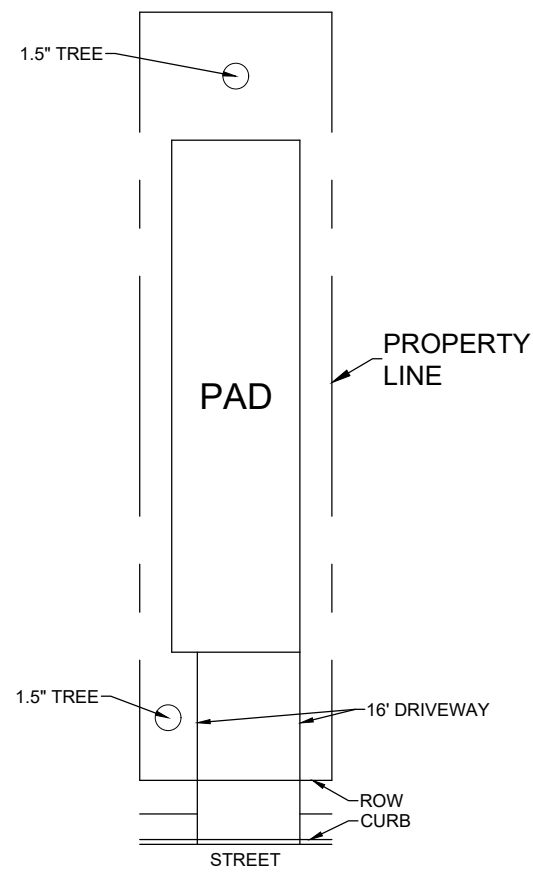
C:\Users\rbrown\OneDrive\Documents\Projects\Grace Gardens\Grace Gardens.dwg
User: rbrown
Last Modified: Jan 10, 2025 - 10:47
Plot Date/Time: Jan 10, 2025 - 10:45:59



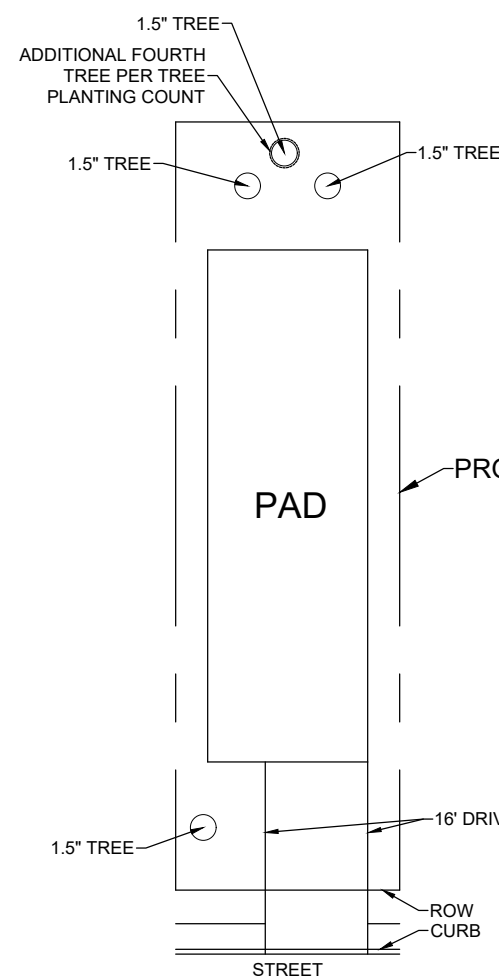
LOCATION MAP
N.T.S.



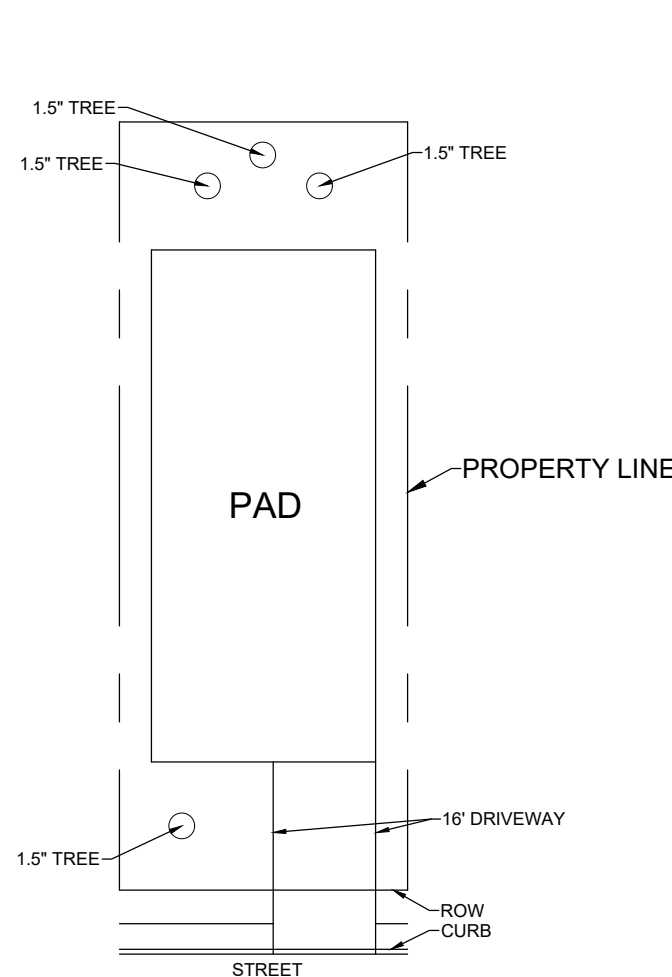
TYPICAL 25' LOT
N.T.S.



TYPICAL 30' LOT
N.T.S.



TYPICAL 35' LOT
N.T.S.

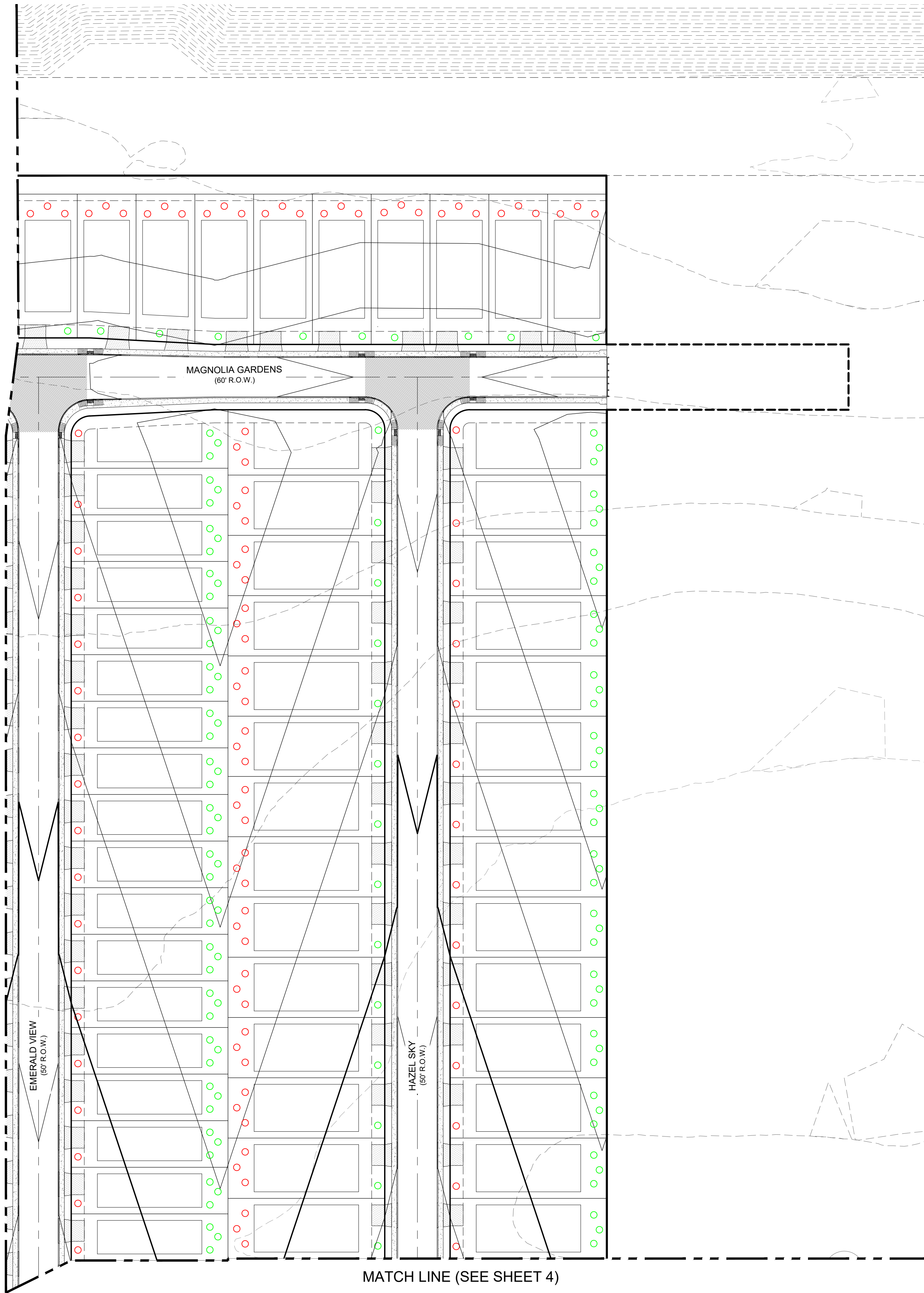


TYPICAL 45' LOT
N.T.S.

LEGEND

TP	TREE PROTECTION FENCING
	TREE (PRESERVE)
	TREE (REMOVE)
	HERITAGE TREE (PRESERVE)
	HERITAGE TREE (REMOVE)
	EXISTING CONTOUR
	PROPOSED CONTOUR
	PROPOSED FOUNDATIONS AND DRIVEWAYS
	PROPOSED TREE LOCATION (875 Sq. Ft.)
	PROPOSED TREE LOCATION (875 Sq. Ft.) (ENERGY CREDIT)
	OUT OF BOUNDS TREE

MATCH LINE (SEE SHEET 1)

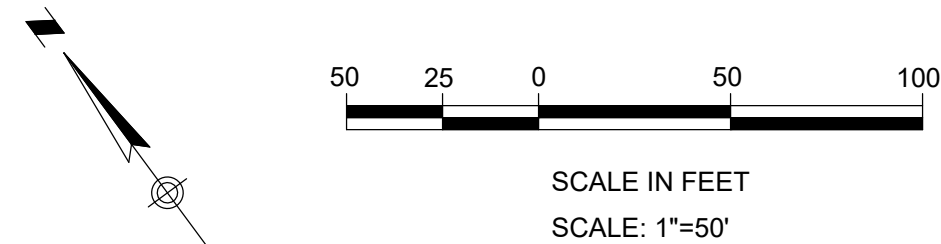


MATCH LINE (SEE SHEET 4)

- NOTES:
- EACH TREE PLANTED SHALL BE ONE AND HALF (1.5) INCH CALIPER NEW TREES, WHICH SHALL GENERALLY BE NATIVE, LARGE CANOPY TREES WITH A MINIMUM SHADE AREA VALUE OF 875 EXCEPT WHERE OTHERWISE NOTED.
 - AS SHOWN HEREIN, TREES PLANTED ON SOUTH AND WEST SIDE OF BUILDINGS SHALL QUALIFY FOR ENERGY CONSERVATION CREDIT.
 - ALL PRESERVED AND PLANTED TREES SHALL BE MAINTAINED IN A HEALTHY CONDITION AT ALL TIMES. THIS INCLUDES IRRIGATING, FERTILIZING, PRUNING, AND OTHER MAINTENANCE AS NEEDED. TREES THAT DIE WITHIN TWELVE MONTHS SHALL BE REPLACED WITH A TREE OF COMPARABLE SIZE AND SPECIES. REGARDING REPLACEMENT OF PRESERVED TREES, SIGNIFICANT TREES SHALL BE REPLACED AT A 1:1 RATION (OR INCH-FOR-INCH) AND HERITAGE TREES SHALL BE REPLACED AT A 3:1 RATION (OR THREE-TO-ONE INCHES).
 - ALL TREE PROTECTION SHALL CONSIST OF LEVEL 1 FENCE PROTECTION UNLESS OTHERWISE NOTED.
 - TREE PLANTING SOIL REQUIREMENT NOTE: PER 35-523(M)(7), ALL TREE PLANTING SUBJECT TO SECTION 35-523(M) SHALL BE REQUIRED TO BE PLANTED IN SOIL THAT IS SUITABLE FOR ESTABLISHING AND SUSTAINING THE PLANTINGS, IN ADDITION TO CONTAINING SUITABLE SOIL PARTICLE SIZE AND DEPTH OF SOIL ZONE. THE SOIL MUST CONTAIN SUFFICIENT ORGANIC MATTER AND NUTRIENTS. TESTING AND CONFIRMATION BY A LANDSCAPE ARCHITECT, OR A TEXAS LICENSED SOIL TESTING FIRM SHALL BE COMPLETED TO ENSURE THE SOILS ARE SUITABLE. IN LIEU OF CONFIRMATION BY A LANDSCAPE ARCHITECT, OR A TEXAS LICENSED SOIL TESTING FIRM, SOIL MAY BE AMENDED WITH COMPOST BY ADDING THREE (3) INCHES OF COMPOST BLENDED INTO EVERYONE (1) FOOT OF SOIL. FOR COMPLETE SOIL REPLACEMENT, SUCH AS TREE PLANTINGS, AN AMOUNT OF TWENTY-FIVE (25) PERCENT COMPOST MAY BE ADDED TO SEVENTY-FIVE (75) PERCENT NATIVE SOIL.

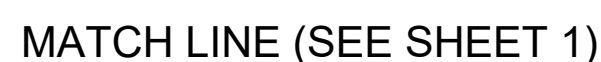
TREE PLANTING COUNT:

- ALL 286 LOTS SHALL RECEIVE 2 NEW 1.5" TREES.
- 35' LOTS SHALL RECEIVE (1) ADDITIONAL TREE (3 TOTAL) TO MEET CANOPY REQUIREMENTS.
- 45' LOTS SHALL RECEIVE (2) ADDITIONAL TREES (4 TOTAL) TO MEET CANOPY REQUIREMENTS.



NO.	REVISIONS	DESCRIPTION	BY	DATE
1	9/8/2023			
2				
3				
4				
5				
6				
7				
8				
9				
10				
11				
12				
13				
14				
15				
16				
17				
18				
19				
20				
21				
22				
23				
24				
25				
26				
27				
28				
29				
30				
31				
32				
33				
34				
35				
36				
37				
38				
39				
40				
41				
42				
43				
44				
45				
46				
47				
48				
49				
50				
51				
52				
53				
54				
55				
56				
57				
58				
59				
60				
61				
62				
63				
64				
65				
66				
67				
68				
69				
70				
71				
72				
73				
74				
75				
76				
77				
78				
79				
80				
81				
82				
83				
84				
85				
86				
87				
88				
89				
90				
91				
92				
93				
94				
95				
96				
97				
98				
99				
100				

DATE:	9/8/2023
DESIGNED BY:	
DRAWN BY:	
CHECKED BY:	RG
DRAWING NAME:	th Tree Preservation.dwg

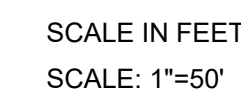


MATCH LINE (SEE SHEET 4)

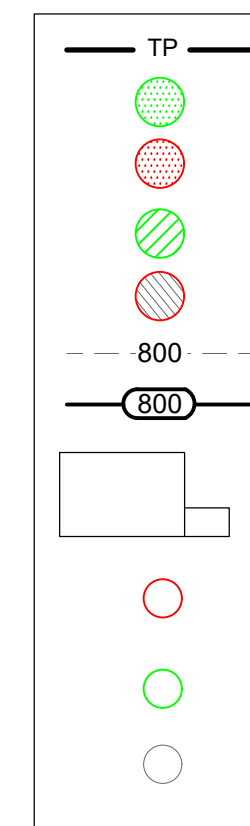
- NOTES:**
1. EACH TREE PLANTED SHALL BE ONE AND HALF (1.5) INCH CALIPER NEW TREES, WHICH SHALL GENERALLY BE NATIVE, LARGE CANOPY TREES WITH A MINIMUM SHADE AREA VALUE OF 875 EXCEPT WHERE OTHERWISE NOTED.
 2. AS SHOWN HEREIN, TREES PLANTED ON SOUTH AND WEST SIDE OF BUILDINGS SHALL QUALIFY FOR ENERGY CONSERVATION CREDIT.
 3. ALL PRESERVED AND PLANTED TREES SHALL BE MAINTAINED IN A HEALTHY CONDITION AT ALL TIMES. THIS INCLUDES IRRIGATING, FERTILIZING, PRUNING, NO OTHER MAINTENANCE AS NEEDED. TREES THAT DIE WITHIN TWELVE MONTHS SHALL BE REPLACED WITH A TREE OF COMPARABLE SIZE AND SPECIES. REGARDING REPLACEMENT OF PRESERVED TREES, SIGNIFICANT TREES SHALL BE REPLACED AT A 1:1 RATIO (OR INCH-FOR-INCH) AND HERITAGE TREES SHALL BE REPLACED AT A 3:1 RATIO (OR THREE-TO-ONE INCHES).
 4. ALL TREE PROTECTION SHALL CONSIST OF LEVEL 1 FENCE PROTECTION UNLESS OTHERWISE NOTED.
 5. TREE PLANTING SOIL REQUIREMENT NOTE: PER 35-523(M)(7), ALL TREE PLANTING SUBJECT TO SECTION 35-523(M) SHALL BE REQUIRED TO BE PLANTED IN SOIL THAT IS SUITABLE FOR ESTABLISHING AND SUSTAINING THE PLANTINGS, IN ADDITION TO CONTAINING SUITABLE SOIL PARTICLE SIZE AND DEPTH OF SOIL ZONE, THE SOIL MUST CONTAIN SUFFICIENT ORGANIC MATTER AND NUTRIENTS. TESTING AND CONFIRMATION BY A LANDSCAPE ARCHITECT, OR A TEXAS LICENSED SOIL TESTING FIRM SHALL BE COMPLETED TO ENSURE THE SOILS ARE SUITABLE. IN LIEU OF CONFIRMATION BY A LANDSCAPE ARCHITECT, OR A TEXAS LICENSED SOIL TESTING FIRM, SOIL MAY BE AMENDED WITH COMPOST BY ADDING THREE (3) INCHES OF COMPOST BLENDED INTO EVERYONE (1) FOOT OF SOIL. FOR COMPLETE SOIL REPLACEMENT, SUCH AS TREE PLANTINGS, AN AMOUNT OF TWENTY-FIVE (25) PERCENT COMPOST MAY BE ADDED TO SEVENTY-FIVE (75) PERCENT NATIVE SOIL.

TREE PLANTING COUNT:

1. ALL 286 LOTS SHALL RECEIVE 2 NEW 1.5" TREES.
2. 35' LOTS SHALL RECEIVE (1) ADDITIONAL TREE (3 TOTAL) TO MEET CANOPY REQUIREMENTS.
3. 45' LOTS SHALL RECEIVE (2) ADDITIONAL TREES (4 TOTAL) TO MEET CANOPY REQUIREMENTS.



LEGEND



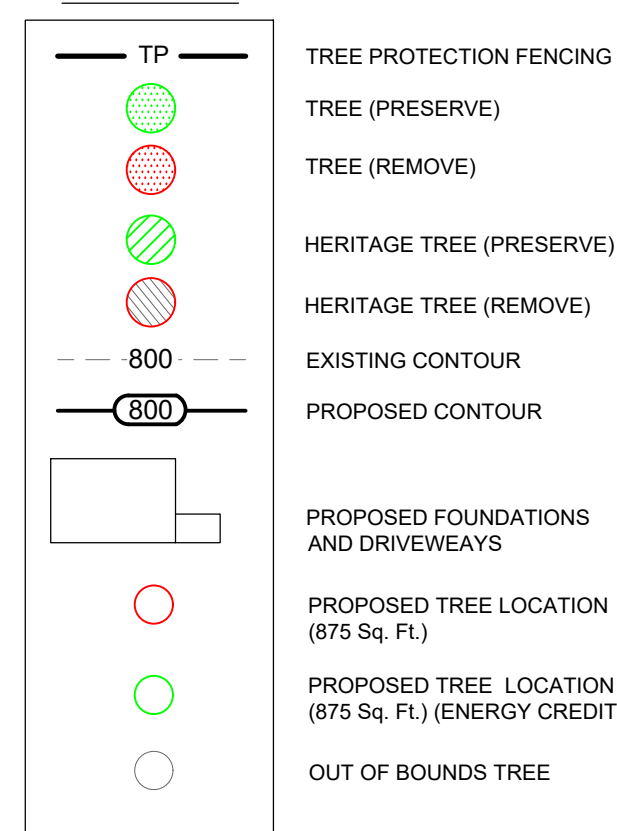
TREE PROTECTION FENCING
TREE (PRESERVE)
TREE (REMOVE)
HERITAGE TREE (PRESERVE)
HERITAGE TREE (REMOVE)
EXISTING CONTOUR
PROPOSED CONTOUR

PROPOSED FOUNDATIONS
AND DRIVEWAYS
PROPOSED TREE LOCATION
(875 Sq. Ft.)
PROPOSED TREE LOCATION
(875 Sq. Ft.) (ENERGY CREDIT)
OUT OF BOUNDS TREE

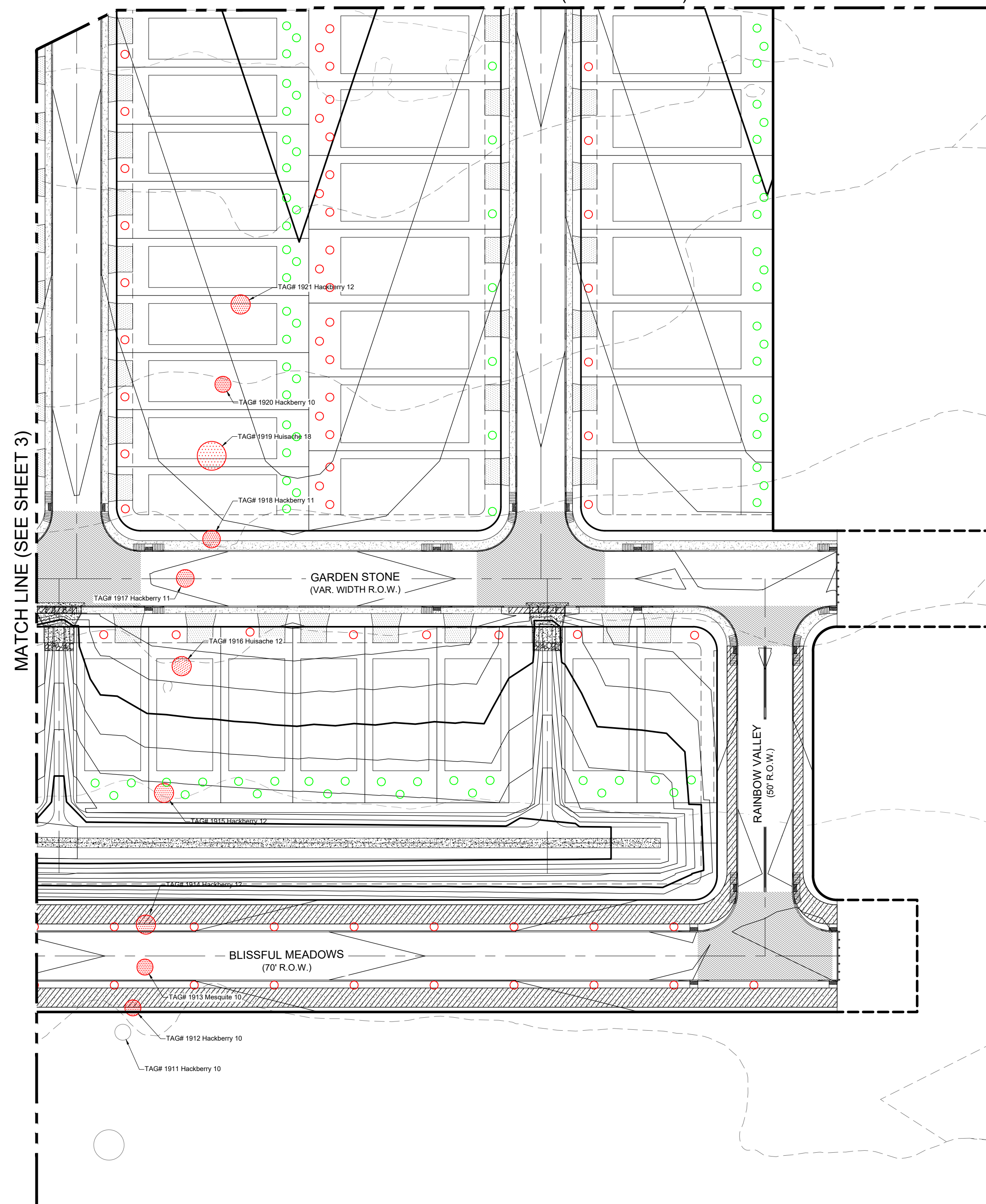
[illegible]



LEGEND



MATCH LINE (SEE SHEET 2)

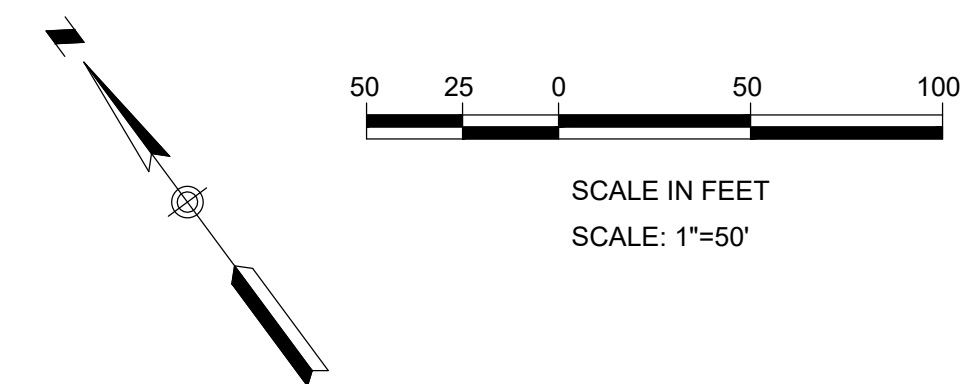


NOTES:

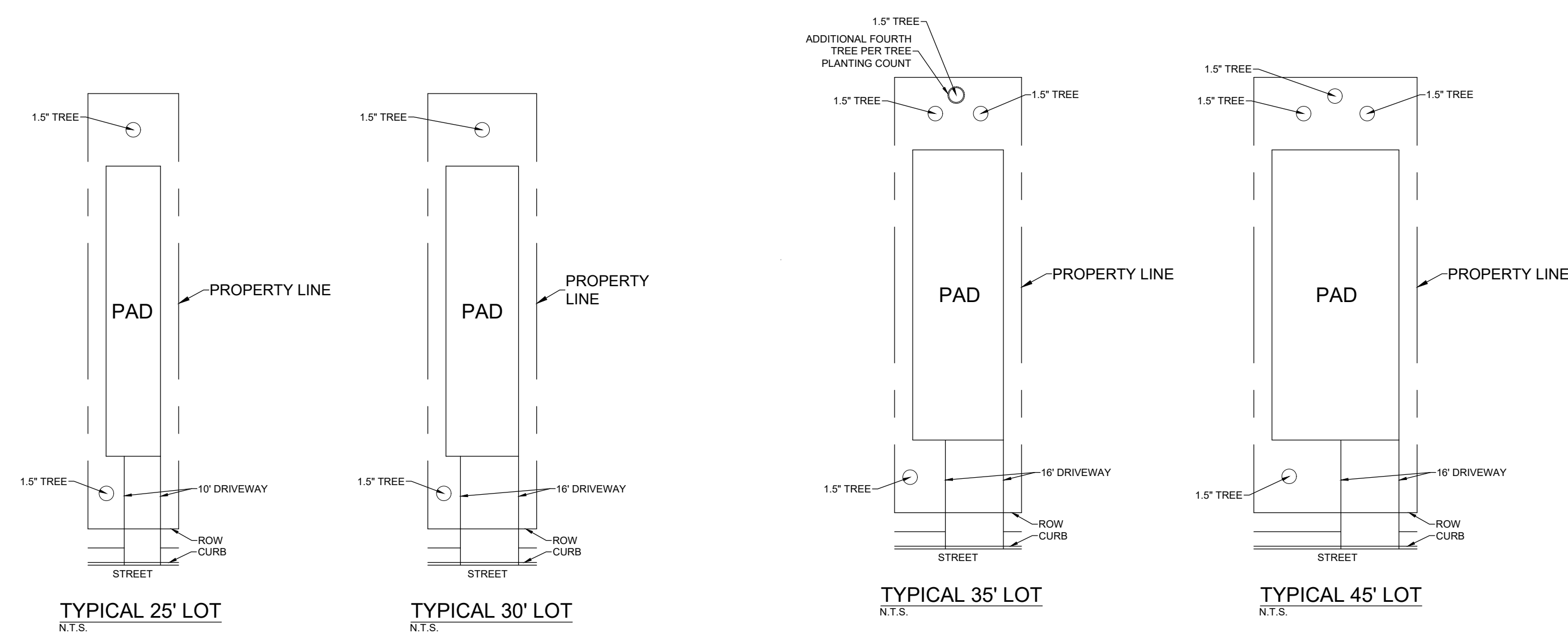
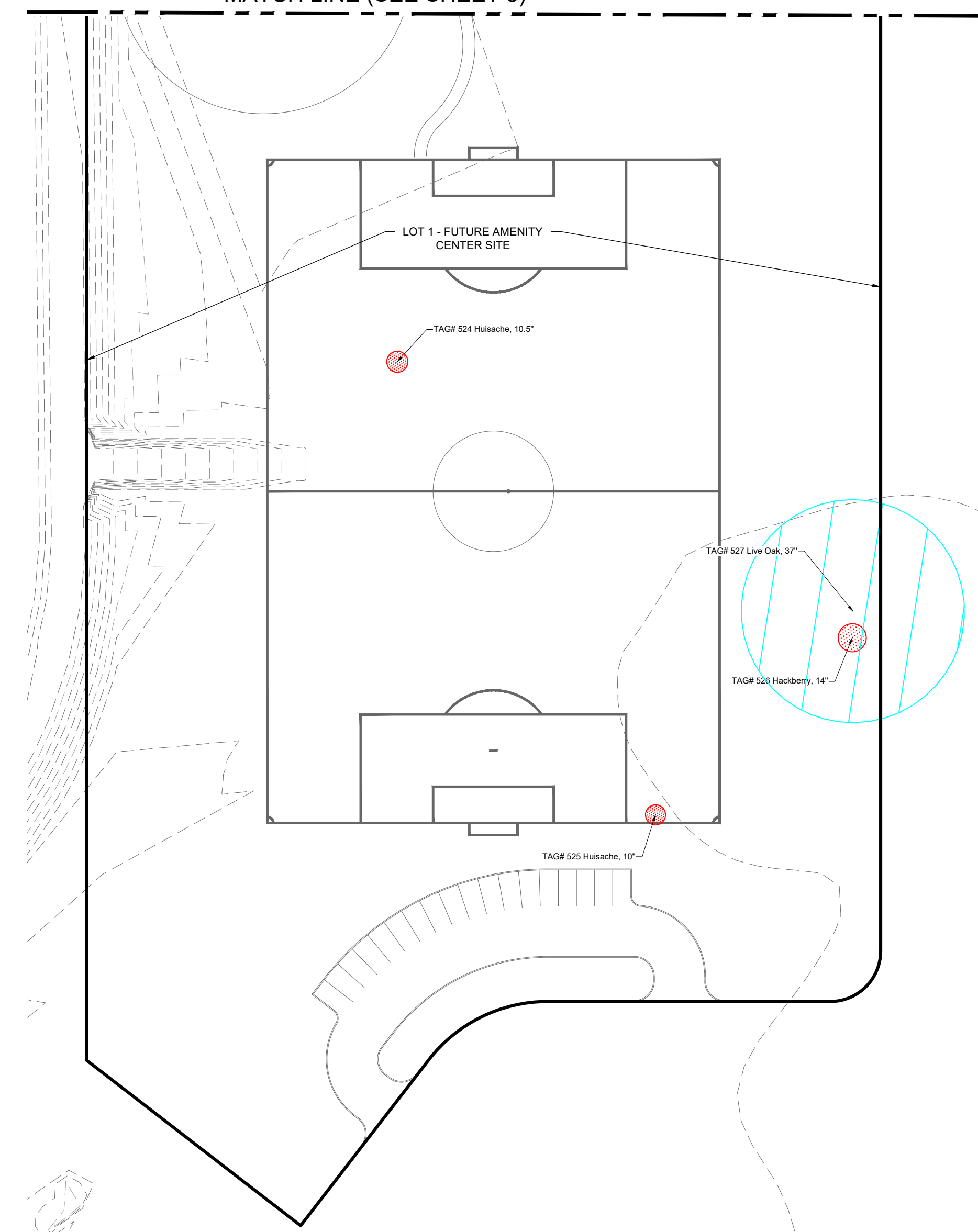
1. EACH TREE PLANTED SHALL BE ONE AND HALF (1.5) INCH CALIPER NEW TREES, WHICH SHALL GENERALLY BE NATIVE, LARGE CANOPY TREES WITH A MINIMUM SHADE AREA VALUE OF 875 EXCEPT WHERE OTHERWISE NOTED.
2. AS SHOWN HEREIN, TREES PLANTED ON SOUTH AND WEST SIDE OF BUILDINGS SHALL QUALIFY FOR ENERGY CONSERVATION CREDIT.
3. ALL PRESERVED AND PLANTED TREES SHALL BE MAINTAINED IN A HEALTHY CONDITION AT ALL TIMES. THIS INCLUDES IRRIGATING, FERTILIZING, PRUNING, AND NO OTHER MAINTENANCE AS NEEDED. TREES THAT DIE WITHIN TWELVE MONTHS SHALL BE REPLACED WITH A TREE OF COMPARABLE SIZE AND SPECIES. REGARDING REPLACEMENT OF PRESERVED TREES, SIGNIFICANT TREES SHALL BE REPLACED AT A 1:1 RATION (OR INCH-FOR-INCH) AND HERITAGE TREES SHALL BE REPLACED AT A 3:1 RATION (OR THREE-TO-ONE INCHES).
4. ALL TREE PROTECTION SHALL CONSIST OF LEVEL 1 FENCE PROTECTION UNLESS OTHERWISE NOTED.
5. TREE PLANTING SOIL REQUIREMENT NOTE: PER 35-523(M)(7), ALL TREE PLANTINGS SUBJECT TO SECTION 35-523(M)(1) SHALL BE REQUIRED TO BE PLANTED IN SOIL THAT IS SUITABLE FOR ESTABLISHING AND SUSTAINING THE PLANTINGS, IN ADDITION TO CONTAINING SUITABLE SOIL PARTICLE SIZE AND DEPTH OF SOIL ZONE. THE SOIL MUST CONTAIN SUFFICIENT ORGANIC MATTER AND NUTRIENTS. TESTING AND CONFIRMATION BY A LANDSCAPE ARCHITECT, OR A TEXAS LICENSED SOIL TESTING FIRM SHALL BE COMPLETED TO ENSURE THE SOILS ARE SUITABLE. IN LIEU OF CONFIRMATION BY A LANDSCAPE ARCHITECT, OR A TEXAS LICENSED SOIL TESTING FIRM, SOIL MAY BE AMENDED WITH COMPOST TO A MINIMUM OF THREE (3) INCHES OF COMPOST BLENDED INTO EVERYONE (1) FOOT OF SOIL. FOR COMPLETE SOIL REPLACEMENT, SUCH AS TREE PLANTINGS, AN AMOUNT OF TWENTY-FIVE (25) PERCENT COMPOST MAY BE ADDED TO SEVENTY-FIVE (75) PERCENT NATIVE SOIL.

TREE PLANTING COUNT:


1. ALL 286 LOTS SHALL RECEIVE 2 NEW 1.5" TREES.
2. 35' LOTS SHALL RECEIVE (1) ADDITIONAL TREE (3 TOTAL) TO MEET CANOPY REQUIREMENTS.
3. 45' LOTS SHALL RECEIVE (2) ADDITIONAL TREES (4 TOTAL) TO MEET CANOPY REQUIREMENTS.



MATCH LINE (SEE SHEET 3)



REVISIONS	
NO.	DESCRIPTION
DATE:	9/8/2023
DESIGNED BY:	
DRAWN BY:	RG
CHECKED BY:	
DRAWING NAME:	Tree Preservation.dwg

LJA Engineering, Inc. 

9830 Copernicus Blvd
Suite 300
San Antonio, Texas 78230

Phone 210.503.2700
LJA.COM
TBPE No. F-1386

AMENITY CENTER

Tree Inventory Worksheet to Determine Preservation and Canopy Shade Coverage													
Tag#	Species	Understory Species* 5.0" - 11.5"		Significant Tree 6" - 23.5"		Significant Tree** 10.0" - 23.5"		Heritage 3:1 24" + HERITAGE TREES PRESERVED AT 100%		Heritage 1:1 24" + HERITAGE TREES PRESERVED AT 100%		Additional Inches Preserved for Mitigation ***	Tree Canopy Cover Shade Value
		Removed	Preserved	Removed	Preserved	Removed	Preserved	Removed	Preserved	Removed	Preserved		
501	Hackberry, 10"					10							
502	Mesquite, 11"(sick)					0							
503	Huisache, 12"						12						550
524	Huisache, 10.5"(sick)					0							
525	Huisache, 10" (sick)					0							
526	Hackberry, 14" (Dead)					0							
527	Live Oak, 37"								37				875
1908	Hackberry 10"					10							
Insert additional rows as needed													
Subtotal Inches		0	0	0	0	20	12	0	37	0	0	0	1425
TOTAL INCHES		0		0		32		37		0			
Total Shade Value Calculation of Trees to Remain			1425										

* Small species: Condalia, Redbud, Tx. Mountain Laurel, Tx. Persimmon, Hawthorn, Possumhaw - these are mitigated at 1:1 for Heritage Trees
** Ashe Juniper, Huisache, Mesquite, Arizona Ash, Hackberry protected at 10" dbh and mitigated at 1:1 for heritage trees
*** Mitigation Trees: Unprotected-sized trees to be used for mitigation calculations; subtract inches from mitigation owed

Tree Preservation Calculation									
Preservation by Category:	Percent Preserved	Did You Met the Requirements of the City Tree Ordinance?	TARGET	MIN	TOTAL EXIST	TOTAL SAVED	PERCENT SAVED	MITIGATE TARGET DELTA	TARGET SHADE MITIGATE
Understory Species	100%	Yes	40%	20%	0	0	0.0%	40%	0
Significant Trees	38%	Yes	40%	20%	32	12	38%	3%	0.8
Heritage Trees (3:1)	100%	Yes	100%	20%	0	0	0%	300%	0
Heritage Trees (1:1)	#DIV/0!	Yes	100%	20%	0	0	0%	100%	0
Mitigation Requirements									Σ= 0.8
0 Required Inches of Mitigation (Heritage Trees)									
1 Required Inches of Mitigation (Significant Trees)									
0 Required Inches of Mitigation needed (Understory Trees)									
1 Total Inches Required for Mitigation									
1 1.5" Trees planted for Mitigation									

ON-SITE TREE CALCULATIONS

Tree Inventory Worksheet to Determine Preservation and Canopy Shade Coverage													
Tag#	Species	Understory Species* 5.0" - 11.5"		Significant Tree 6" - 23.5"		Significant Tree** 10.0" - 23.5"		Heritage 3:1 24" + HERITAGE TREES PRESERVED AT 100%		Heritage 1:1 24" + HERITAGE TREES PRESERVED AT 100%		Additional Inches Preserved for Mitigation **	Tree Canopy Cover Shade Value
		Removed	Preserved	Removed	Preserved	Removed	Preserved	Removed	Preserved	Removed	Preserved		
1912	Hackberry 10 (R.O.W.)					0							
1913	Mesquite 10 (R.O.W.)					0							
1914	Hackberry 12 (R.O.W.)					0							
1915	Hackberry 12					12							
1916	Huisache 12 (Dead)					0							
1917	Hackberry 11 (R.O.W.)					0							
1918	Hackberry 11 (Dead)					0							
1919	Huisache 18					18							
1920	Hackberry 10					10							
1921	Hackberry 12					12							
Insert additional rows as needed													
Subtotal Inches		0	0	0	0	52	0	0	0	0	0	0	0
TOTAL INCHES		0		0		52		0		0			
Total Shade Value Calculation of Trees to Remain			0										

* Small species: Condalia, Redbud, Tx. Mountain Laurel, Tx. Persimmon, Hawthorn, Possumhaw - these are mitigated at 1:1 for Heritage Trees
** Ashe Juniper, Huisache, Mesquite, Arizona Ash, Hackberry protected at 10" dbh and mitigated at 1:1 for heritage trees
*** Mitigation Trees: Unprotected-sized trees to be used for mitigation calculations; subtract inches from mitigation owed

Tree Preservation Calculation									
Preservation by Category:	Percent Preserved	Did You Met the Requirements of the City Tree Ordinance?	TARGET	MIN	TOTAL EXIST	TOTAL SAVED	PERCENT SAVED	MITIGATE TARGET DELTA	TARGET SHADE MITIGATE
Understory Species	100%	Yes	35%	20%	0	0	0.0%	35%	0
Significant Trees	0%	No, please contact Development Services at (210) 207-8297 to discuss your mitigation options for Tree Preservation)	35%	20%	52	0	0%	35%	18.2
Heritage Trees (3:1)	#DIV/0!	Yes	100%	20%	0	0	0%	300%	0
Heritage Trees (1:1)	#DIV/0!	Yes	100%	20%	0	0	0%	100%	0
Mitigation Requirements									Σ= 18.2
0 Required Inches of Mitigation (Heritage Trees)									
18 Required Inches of Mitigation (Significant Trees)									
0 Required Inches of Mitigation needed (Understory Trees)									
18 Total Inches Required for Mitigation									
12 1.5" Trees planted for Mitigation									

- NOTES:
- EACH TREE PLANTED SHALL BE ONE AND HALF (1.5) INCH CALIPER NEW TREES, WHICH SHALL GENERALLY BE NATIVE, LARGE CANOPY TREES WITH A MINIMUM SHADE AREA VALUE OF 875 EXCEPT WHERE OTHERWISE NOTED.
 - AS SHOWN HEREIN, TREES PLANTED ON SOUTH AND WEST SIDE OF BUILDINGS SHALL QUALIFY FOR ENERGY CONSERVATION CREDIT.
 - ALL PRESERVED AND PLANTED TREES SHALL BE MAINTAINED IN A HEALTHY CONDITION AT ALL TIMES. THIS INCLUDES IRRIGATING, FERTILIZING, PRUNING AND OTHER MAINTENANCE AS NEEDED. TREES THAT DIE WITHIN TWELVE MONTHS SHALL BE REPLACED WITH A TREE OF COMPARABLE SIZE AND SPECIES. REGARDING REPLACEMENT OF PRESERVED TREES, SIGNIFICANT TREES SHALL BE REPLACED AT A 1:1 RATION (OR INCH-FOR-INCH) AND HERITAGE TREES SHALL BE REPLACED AT A 3:1 RATION (OR THREE-TO-ONE INCHES).
 - ALL TREE PROTECTION SHALL CONSIST OF LEVEL 1 FENCE PROTECTION UNLESS OTHERWISE NOTED.

- TREE PLANTING COUNT:
- ALL 286 LOTS SHALL RECEIVE 2 NEW 1.5" TREES.
 - 35' LOTS SHALL RECEIVE (1) ADDITIONAL TREE (3 TOTAL) TO MEET CANOPY REQUIREMENTS.
 - 45' LOTS SHALL RECEIVE (2) ADDITIONAL TREES (4 TOTAL) TO MEET CANOPY REQUIREMENTS.

DEVELOPMENT SERVICES DEPARTMENT
WORKSHEET TO DETERMINE IF YOU MEET FINAL TREE CANOPY REQUIREMENT. COMPLETE INFORMATION HIGHLIGHTED IN YELLOW

Project Address: S WW White Rd

AP Number:

Step 1 - Calculate Final Tree Canopy Cover Requirement (38% of the entire site)

What is the Size of Lot2206314 sq ft50.65 ac

Final Canopy Required (38% of lot area)838399 sq ft

Step 2 - Complete Preserved Tree inventory Spreadsheet to Determine if You Meet Your

Preservation Category (from Worksheet)Met Requirement

Understory SpeciesYes

Significant TreesNo, please contact Development Services at (210) 207-8297 to discuss your mitigation options for Tree Preservation)

Heritage Trees (3:1)Yes

Heritage Trees (1:1)Yes

Step 3 - Tree Inventory Spreadsheet Determination of Existing Canopy Preservation Credit

Total Square Footage of Existing Canopy Preserved0 sq ft

Step 4 - Calculation of Canopy Shade Area of New Tree Plantings (2 Trees Required)

TREES PLANTED ON NORTH OR EAST SIDE OF HOUSE - NO ENERGY CONSERVATION CREDIT

Shade Value of Tree(s) Selected from San Antonio, Recommended Plant List

Number of TreesShade Value

Trees with Shade Value of 550 sq ft090%0 sq ft

Trees with Shade Value of 875 sq ft45390%356738 sq ft

Trees with shade value of 1200 sq ft090%0 sq ft

Total Square Footage of Planted Canopy356738 sq ft

TREES PLANTED ON SOUTH OR WEST SIDE OF HOUSE - ENERGY CONSERVATION CREDIT

Shade Value of Tree(s) Selected from San Antonio, Recommended Plant List

Number of TreesShade Value

Trees with Shade Value of 550 sq ft090%0 sq ft

Trees with Shade Value of 875 sq ft41490%489038 sq ft

Trees with shade value of 1200 sq ft090%0 sq ft

Total Square Footage of Planted Canopy489038 sq ft

Grand Total Canopy/Shade Area of Trees Planted845775 sq ft

Step 5 - Determine If you Met Final Tree Canopy Requirement

Canopy/Shade Area of Preservation & Planted845775 sq ft

Final Canopy Required (38% of lot area)838399 sq ft

Net Canopy7376 sq ft


Did you meet Tree Canopy Goal?

YES, PLEASE SUBMIT WORKSHEET WITH RESIDENTIAL BUILDING PERMIT APPLICATION

GRACE GARDENS SUBDIVISION UNIT 2
LAND-PLAT-24-11800119
TREE PRESERVATION
CALCULATIONS

NO.	DATE	REVISIONS	
		DESCRIPTION	BY

DATE: 9/8/2023	DESIGNED BY:	DRAWN BY:	CHECKED BY: RG	DRAWING NAME: 24-11800119 Tree Preservation.dwg
----------------	--------------	-----------	----------------	---

**LJA Engineering, Inc.**
9830 Colonnade Blvd
Suite 300
San Antonio, Texas 78230
Phone 210.503.2700
LJA.COM
TPE No. F-1386

JOB NUMBER:
SA173-0402-426

SHEET NO.



1.1.2 LEVEL I & FENCE PROTECTION

1.1.3 LEVEL II A FENCE PROTECTION

1.1.4 LEVEL II B FENCE PROTECTION

1.2 BORING THRU TREE ROOT ZONE

1.3 TREE REMOVAL DIAGRAM

1.4 BRANCH PRUNING DETAIL

1.5 BRANCH CLEARANCE DETAIL

1.6 NEW TREE PLANTING DETAIL

6