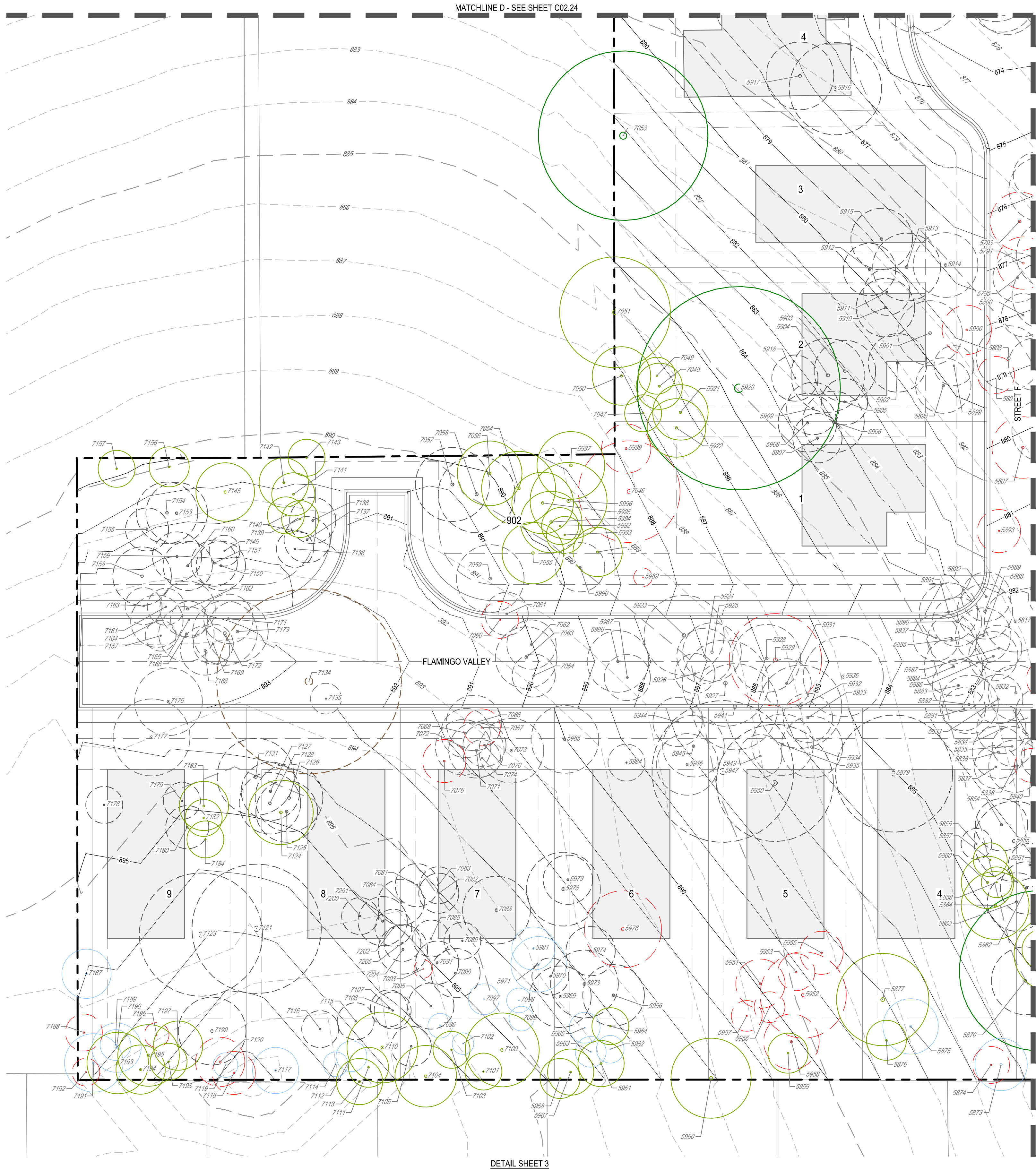
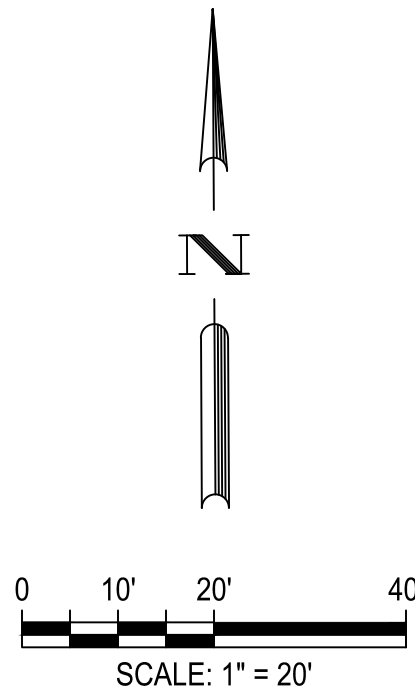


G:\TXC\Projects\San Antonio Projects\2936-00 - Heron Valley\01\_Unit\03\_CADD\01\_Shts\C02.20 TREE PROTECTION PLAN.dwg Layout: DETAILED TREE PROTECTION PLAN (SHEET 3 OF 4) Plotted: 10/29/2024 11:06:37 AM By: Calderon



DETAIL SHEET 3



- LEGEND
- PROPERTY BOUNDARY
  - PHASE BOUNDARY
  - PROPOSED LOT LINES
  - PROPOSED EASEMENT
  - LOT NUMBER
  - PRESERVED HERITAGE TREE
  - PRESERVED SIGNIFICANT TREE
  - REMOVED SIGNIFICANT TREE
  - EXEMPT - REMOVED HERITAGE TREE
  - EXEMPT - REMOVED SIGNIFICANT TREE
  - PRESERVED UNPROTECTED TREE
  - REMOVED TREE IN POOR CONDITION
  - REMOVED INVASIVE TREE

GENERAL NOTES

- BEARING ORIENTATION IS BASED ON THE TEXAS STATE PLANE COORDINATE SYSTEM, SOUTH CENTRAL ZONE 4204, NAD-83. DISTANCES SHOWN ARE SURFACE VALUES.
- NO CONSTRUCTION (CLEARING, CUTTING, FILLING, TRENCHING, ETC.) SHALL TAKE PLACE WITHIN THE 1/2 ROOT PROTECTION ZONE (RPZ). CONTRACTOR TO ENSURE TREE PROTECTION FULLY ENCAPSULATES 1/2 RPZ AND SHALL NOTIFY TO OWNER/ENGINEER IMMEDIATELY IF THIS AREA IS ENCROACHED. PLEASE REFERENCE THE COSA TREE PRESERVATION AND PROTECTION DETAILS.
- PLEASE SEE TREE MAN ASSESSMENT FROM 06-17-2024 FOR FURTHER INFORMATION.

MITIGATION NOTES

- HOME BUILDER WILL BE REQUIRED TO PLANT 3 - 2" (MIN) CALIPER TREES WITH A SHADE VALUE OF 875 PER LOT. A TOTAL OF 192 TREES WILL BE PLANTED ON THE SITE BASED ON THE TABLE. LOTS 1-9 (BLOCK B) WILL HAVE ONE ADDITIONAL 2" TREE PLANTED (REFERENCE APPENDIX D FOR LIST OF APPROVED TREE SPECIES).
- A TOTAL OF 200 MITIGATION INCHES WERE REQUIRED FROM THE SITE. 201 INCHES WILL BE MITIGATED BY PLANTING TREES.
- TREE WELLS HAVE A MINIMUM SPACING OF 5' FROM THE TREE TRUNK.

PLAT NUMBER  
24-11800389

DATE	REV	DESCRIPTION
APR		



BGE, INC.  
7330 San Pedro, Suite 202  
San Antonio, TX 78216  
TEL: 214-581-3680 www.bgeenergy.com  
TREE Registration No. F-1046

HERON VALLEY PHASE 1

DETAILED TREE PROTECTION PLAN  
(SHEET 3 OF 4)

NOT FOR CONSTRUCTION

SHEET  
C02.23