

NOTES:
 1. STATIONING FOR 8" WATER MAINS ARE BASED ON ROAD ALIGNMENTS. STATIONING FOR 12" WATER MAINS ARE BASED ON AN ALIGNMENT ALONG THE 12" MAIN (SEE SHEET 42-44 FOR PROFILE VIEWS).
 2. GATE VALVES ON FIRE HYDRANT LEADS SHALL BE RESTRAINED AT THE TEE. SEE THIS SHEET FOR CALLOUTS FOR ANCHOR TEES FOR FIRE HYDRANTS.

NOTE:
 JARO SOUTH SUBDIVISION IS CONSTRUCTING THE SEWER THAT WILL PROVIDE THE CONNECTION FOR THIS DEVELOPMENT. CONTRACTOR TO NOTIFY ENGINEER OF ANY DISCREPANCIES.

NOTE:
 12" WATER LABELS ARE SHOWN ON SHEETS 42-44. LABELS FOR THE CONNECTION POINTS FROM 12" TO 8" ARE SHOWN ON THIS SHEET FOR REFERENCE.

CONTRACTOR SHALL NOTIFY THE FOLLOWING UTILITY COMPANIES 48 HOURS PRIOR TO EXCAVATION:

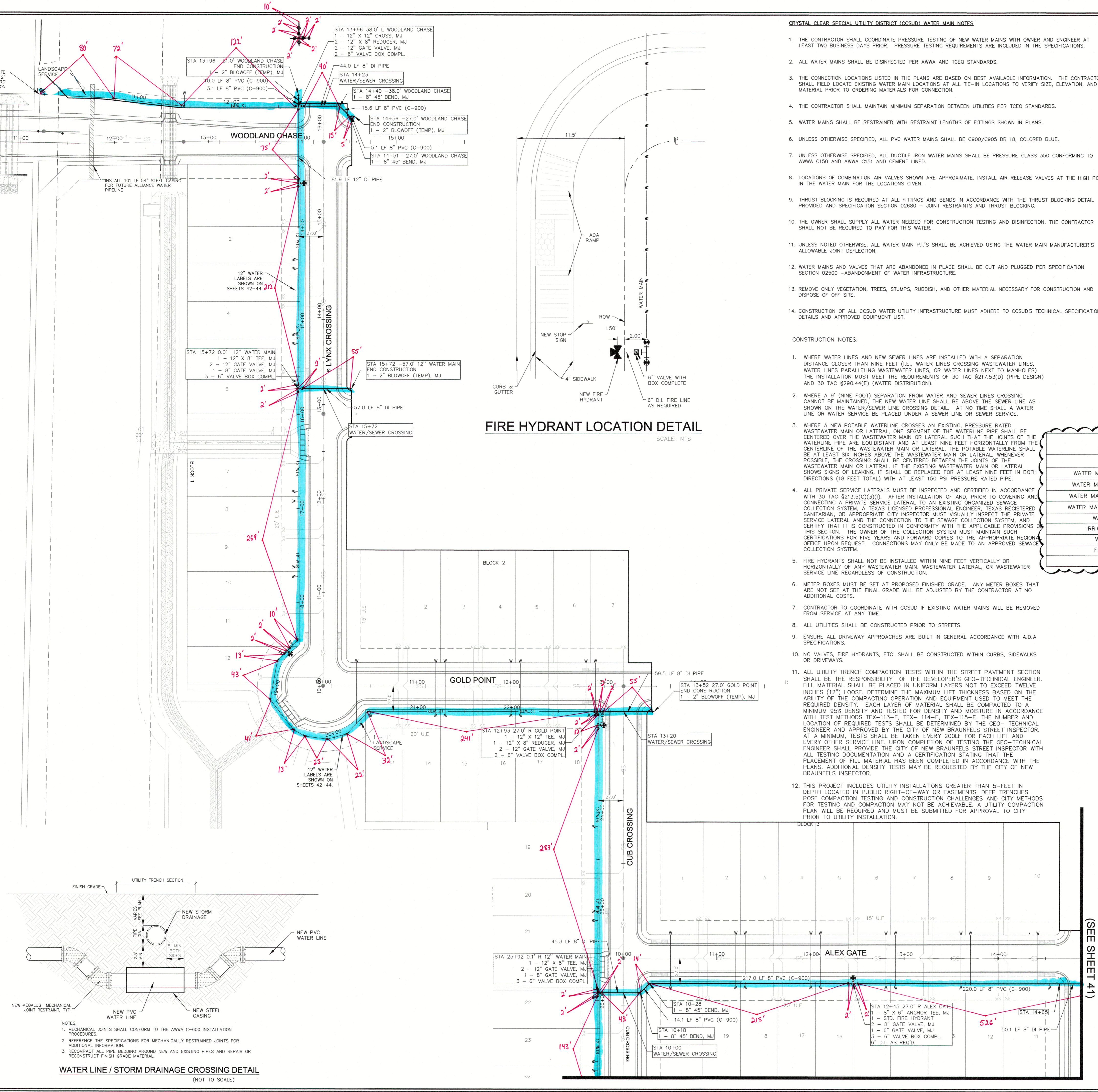
City of Seguin Utilities (Sewer)	830-386-2222
Crystal Clear SUD	830-372-1031
Spectrum Cable	830-628-3458
Centerpoint Gas	830-643-6434
Robert Sanders	830-643-6903
Damaged Line	888-876-5786
AT&T Telephone	830-303-1333
Erick White PM	210-283-1706
Scott McBrearty (Construction)	210-658-4886
Texas One Call	830-545-6005

C.P.E. LOCATOR
 CALL CENTER POINT ENERGY LOCATOR AT 1-800-545-6005, 48HRS BEFORE BEGINNING ANY EXCAVATION. DUE TO FEDERAL REGULATIONS TITLE 49, PART 192.101, CENTER POINT ENERGY MUST MAINTAIN ACCESS TO GAS VALVES AT ALL TIMES. THE CONTRACTOR MUST PROTECT AND WORK AROUND ANY GAS VALVES THAT ARE IN THE PROJECT AREA.

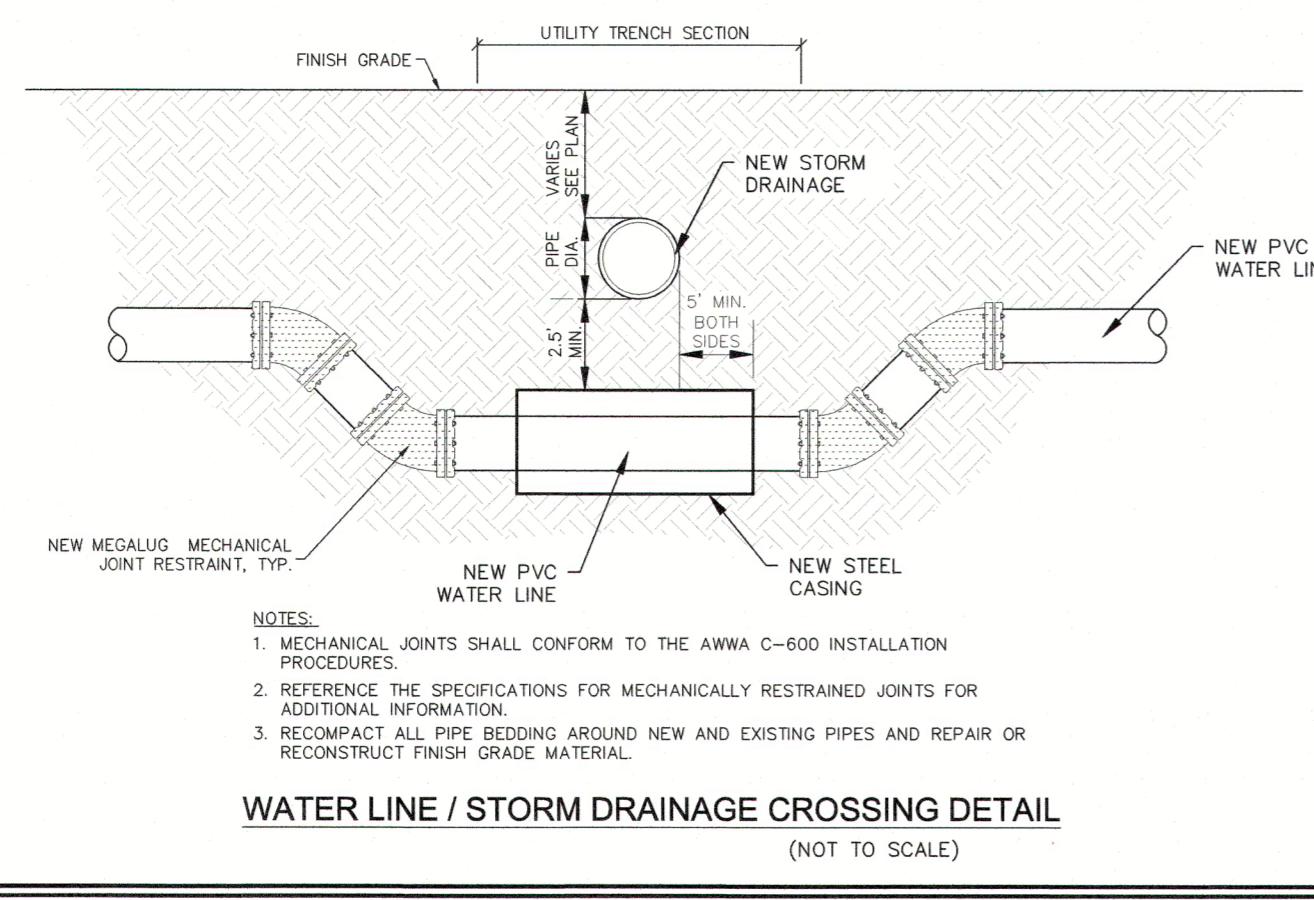
TELEPHONE LOCATOR
 THE EXISTENCE AND LOCATION OF UNDERGROUND CABLE INDICATED ON THE PLANS ARE TAKEN FROM THE BEST RECORDS AVAILABLE AND ARE NOT GUARANTEED TO BE ACCURATE. CONTRACTOR TO CONTACT THE TELEPHONE COMPANY CABLE LOCATOR 48HRS PRIOR TO EXCAVATION AT 1-800-545-6005. CONTRACTOR HAS THE RESPONSIBILITY TO PROTECT AND SUPPORT TELEPHONE COMPANY DURING CONSTRUCTION.

TRENCH EXCAVATION SAFETY PROTECTION
 CONTRACTOR AND/OR CONTRACTOR'S INDEPENDENTLY RETAINED EMPLOYEE OR STRUCTURAL DESIGN/GEOTECHNICAL/SAFETY/EQUIPMENT CONSULTANT, IF ANY, SHALL REVIEW THESE PLANS AND AVAILABLE GEOTECHNICAL INFORMATION AND THE ANTICIPATED INSTALLATION SITE(S) WITHIN THE PROJECT WORK AREA IN ORDER TO IMPLEMENT THE CONTRACTOR'S TRENCH EXCAVATION SAFETY PROTECTION SYSTEMS, PROGRAMS AND/OR PROCEDURES FOR THE PROJECT DESCRIBED IN THE CONTRACT DOCUMENTS. THE CONTRACTOR'S IMPLEMENTATION OF THESE SYSTEMS, PROGRAMS AND/OR PROCEDURES SHALL PROVIDE FOR ADEQUATE TRENCH EXCAVATION SAFETY PROTECTION THAT COMPLY WITH AS A MINIMUM, OSHA STANDARDS FOR TRENCH EXCAVATIONS. SPECIFICALLY, CONTRACTOR AND/OR CONTRACTOR'S INDEPENDENTLY RETAINED EMPLOYEE OR SAFETY CONSULTANT SHALL IMPLEMENT A TRENCH SAFETY PROGRAM IN ACCORDANCE WITH OSHA STANDARDS GOVERNING THE PRESENCE AND ACTIVITIES OF INDIVIDUALS WORKING IN AND AROUND TRENCH EXCAVATIONS.

THE LOCATION OF ALL EXISTING UNDERGROUND UTILITIES ARE SHOWN IN AN APPROXIMATE LOCATION ONLY. THE CONTRACTOR SHALL DETERMINE THE EXACT LOCATION OF ALL EXISTING UTILITIES BEFORE COMMENCING WORK. THE CONTRACTOR WILL AGREE TO BE FULLY RESPONSIBLE FOR ANY AND ALL DAMAGES WHICH MIGHT BE INCURRED BY THEIR FAILURE TO EXACTLY LOCATE AND PRESERVE ANY AND ALL UNDERGROUND UTILITIES, STRUCTURES OR FACILITIES. CONTRACTOR SHALL NOTIFY ENGINEER OF ANY DISCREPANCIES 24-HOURS PRIOR TO COMMENCING CONSTRUCTION.



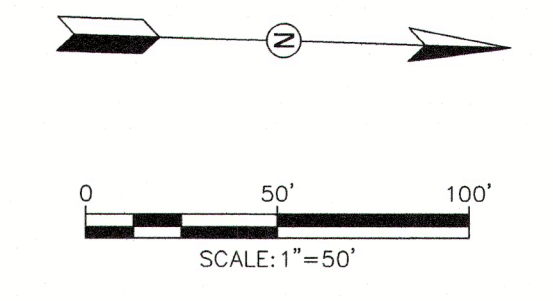
FIRE HYDRANT LOCATION DETAIL
 SCALE: 1"=10'



WATER LINE / STORM DRAINAGE CROSSING DETAIL
 (NOT TO SCALE)

- CRYSTAL CLEAR SPECIAL UTILITY DISTRICT (CCSUD) WATER MAIN NOTES**
1. THE CONTRACTOR SHALL COORDINATE PRESSURE TESTING OF NEW WATER MAINS WITH OWNER AND ENGINEER AT LEAST TWO BUSINESS DAYS PRIOR. PRESSURE TESTING REQUIREMENTS ARE INCLUDED IN THE SPECIFICATIONS.
 2. ALL WATER MAINS SHALL BE DISINFECTED PER AWWA AND TCEQ STANDARDS.
 3. THE CONNECTION LOCATIONS LISTED IN THE PLANS ARE BASED ON BEST AVAILABLE INFORMATION. THE CONTRACTOR SHALL FIELD LOCATE EXISTING WATER MAIN LOCATIONS AT ALL TIE-IN LOCATIONS TO VERIFY SIZE, ELEVATION, AND MATERIAL PRIOR TO ORDERING MATERIALS FOR CONNECTION.
 4. THE CONTRACTOR SHALL MAINTAIN MINIMUM SEPARATION BETWEEN UTILITIES PER TCEQ STANDARDS.
 5. WATER MAINS SHALL BE RESTRAINED WITH RESTRAINT LENGTHS OF FITTINGS SHOWN IN PLANS.
 6. UNLESS OTHERWISE SPECIFIED, ALL PVC WATER MAINS SHALL BE C900/C905 DR 18, COLORED BLUE.
 7. UNLESS OTHERWISE SPECIFIED, ALL DUCTILE IRON WATER MAINS SHALL BE PRESSURE CLASS 350 CONFORMING TO AWWA C150 AND AWWA C151 AND CEMENT LINED.
 8. LOCATIONS OF COMBINATION AIR VALVES SHOWN ARE APPROXIMATE. INSTALL AIR RELEASE VALVES AT THE HIGH POINT IN THE WATER MAIN FOR THE LOCATIONS GIVEN.
 9. THRUST BLOCKING IS REQUIRED AT ALL FITTINGS AND BENDS IN ACCORDANCE WITH THE THRUST BLOCKING DETAIL PROVIDED AND SPECIFICATION SECTION 02680 - JOINT RESTRAINTS AND THRUST BLOCKING.
 10. THE OWNER SHALL SUPPLY ALL WATER NEEDED FOR CONSTRUCTION TESTING AND DISINFECTION. THE CONTRACTOR SHALL NOT BE REQUIRED TO PAY FOR THIS WATER.
 11. UNLESS NOTED OTHERWISE, ALL WATER MAIN P.I.'S SHALL BE ACHIEVED USING THE WATER MAIN MANUFACTURER'S ALLOWABLE JOINT DEFLECTION.
 12. WATER MAINS AND VALVES THAT ARE ABANDONED IN PLACE SHALL BE CUT AND PLUGGED PER SPECIFICATION SECTION 02500 - ABANDONMENT OF WATER INFRASTRUCTURE.
 13. REMOVE ONLY VEGETATION, TREES, STUMPS, RUBBISH, AND OTHER MATERIAL NECESSARY FOR CONSTRUCTION AND DISPOSE OF OFF SITE.
 14. CONSTRUCTION OF ALL CCSUD WATER UTILITY INFRASTRUCTURE MUST ADHERE TO CCSUD'S TECHNICAL SPECIFICATIONS, DETAILS AND APPROVED EQUIPMENT LIST.

- CONSTRUCTION NOTES:**
1. WHERE WATER LINES AND NEW SEWER LINES ARE INSTALLED WITH A SEPARATION DISTANCE CLOSER THAN NINE FEET (I.E., WATER LINES CROSSING WASTEWATER LINES, WATER LINES PARALLELING WASTEWATER LINES, OR WATER LINES NEXT TO MANHOLES) THE INSTALLATION MUST MEET THE REQUIREMENTS OF 30 TAC §217.53(D) (PIPE DESIGN) AND 30 TAC §290.44(E) (WATER DISTRIBUTION).
 2. WHERE A 9' (NINE FOOT) SEPARATION FROM WATER AND SEWER LINES CROSSING CANNOT BE MAINTAINED, THE NEW WATER LINE SHALL BE ABOVE THE SEWER LINE AS SHOWN ON THE WATER/SEWER LINE CROSSING DETAIL. AT NO TIME SHALL A WATER LINE OR WATER SERVICE BE PLACED UNDER A SEWER LINE OR SEWER SERVICE.
 3. WHERE A NEW POTABLE WATERLINE CROSSES AN EXISTING, PRESSURE RATED WASTEWATER MAIN OR LATERAL, ONE SEGMENT OF THE WATERLINE PIPE SHALL BE CENTERED OVER THE WASTEWATER MAIN OR LATERAL SUCH THAT THE JOINTS OF THE WATERLINE PIPE ARE EQUIDISTANT AND AT LEAST NINE FEET HORIZONTALLY FROM THE CENTERLINE OF THE WASTEWATER MAIN OR LATERAL. THE POTABLE WATERLINE SHALL BE AT LEAST SIX INCHES ABOVE THE WASTEWATER MAIN OR LATERAL. WHENEVER POSSIBLE, THE CROSSING SHALL BE CENTERED BETWEEN THE JOINTS OF THE WASTEWATER MAIN OR LATERAL. IF THE EXISTING WASTEWATER MAIN OR LATERAL SHOWS SIGNS OF LEAKING, IT SHALL BE REPLACED FOR AT LEAST NINE FEET IN BOTH DIRECTIONS (18 FEET TOTAL) WITH AT LEAST 150 PSI PRESSURE RATED PIPE.
 4. ALL PRIVATE SERVICE LATERALS MUST BE INSPECTED AND CERTIFIED IN ACCORDANCE WITH 30 TAC §213.5(C)(3)(I). AFTER INSTALLATION OF AND, PRIOR TO COVERING AND CONNECTING A PRIVATE SERVICE LATERAL TO AN EXISTING ORGANIZED SEWAGE COLLECTION SYSTEM, A TEXAS LICENSED PROFESSIONAL ENGINEER, TEXAS REGISTERED SANITARIAN, OR APPROPRIATE CITY INSPECTOR MUST VISUALLY INSPECT THE PRIVATE SERVICE LATERAL AND THE CONNECTION TO THE SEWAGE COLLECTION SYSTEM, AND CERTIFY THAT IT IS CONSTRUCTED IN CONFORMANCE WITH THE APPLICABLE PROVISIONS OF THIS SECTION. THE OWNER OF THE COLLECTION SYSTEM MUST MAINTAIN SUCH CERTIFICATIONS FOR FIVE YEARS AND FORWARD COPIES TO THE APPROPRIATE REGIONAL OFFICE UPON REQUEST. CONNECTIONS MAY ONLY BE MADE TO AN APPROVED SEWAGE COLLECTION SYSTEM.
 5. FIRE HYDRANTS SHALL NOT BE INSTALLED WITHIN NINE FEET VERTICALLY OR HORIZONTALLY OF ANY WASTEWATER MAIN, WASTEWATER LATERAL, OR WASTEWATER SERVICE LINE REGARDLESS OF CONSTRUCTION.
 6. METER BOXES MUST BE SET AT PROPOSED FINISHED GRADE. ANY METER BOXES THAT ARE NOT SET AT THE FINAL GRADE WILL BE ADJUSTED BY THE CONTRACTOR AT NO ADDITIONAL COSTS.
 7. CONTRACTOR TO COORDINATE WITH CCSUD IF EXISTING WATER MAINS WILL BE REMOVED FROM SERVICE AT ANY TIME.
 8. ALL UTILITIES SHALL BE CONSTRUCTED PRIOR TO STREETS.
 9. ENSURE ALL DRIVEWAY APPROACHES ARE BUILT IN GENERAL ACCORDANCE WITH A.D.A SPECIFICATIONS.
 10. NO VALVES, FIRE HYDRANTS, ETC. SHALL BE CONSTRUCTED WITHIN CURBS, SIDEWALKS OR DRIVEWAYS.
 11. ALL UTILITY TRENCH COMPACTION TESTS WITHIN THE STREET PAVEMENT SECTION SHALL BE THE RESPONSIBILITY OF THE DEVELOPER'S GEO-TECHNICAL ENGINEER. FILL MATERIAL SHALL BE PLACED IN UNIFORM LAYERS NOT TO EXCEED TWELVE INCHES (12") THICK. DETERMINE THE MAXIMUM LIFT THICKNESS BASED ON THE ABILITY OF THE COMPACTING OPERATION AND EQUIPMENT USED TO MEET THE REQUIRED DENSITY. EACH LAYER OF MATERIAL SHALL BE COMPACTED TO A MINIMUM 95% DENSITY AND TESTED FOR DENSITY AND MOISTURE IN ACCORDANCE WITH TEST METHODS TEX-113-E, TEX-114-E, TEX-115-E. THE NUMBER AND LOCATION OF REQUIRED TESTS SHALL BE DETERMINED BY THE GEO-TECHNICAL ENGINEER AND APPROVED BY THE CITY OF NEW BRAUNFELS STREET INSPECTOR. AT A MINIMUM, TESTS SHALL BE TAKEN EVERY 200' FOR EACH LIFT AND EVERY OTHER SERVICE LINE. UPON COMPLETION OF TESTING THE GEO-TECHNICAL ENGINEER SHALL PROVIDE THE CITY OF NEW BRAUNFELS STREET INSPECTOR WITH ALL TESTING DOCUMENTATION AND A CERTIFICATION STATING THAT THE PLACEMENT OF FILL MATERIAL HAS BEEN COMPLETED IN ACCORDANCE WITH THE PLANS. ADDITIONAL DENSITY TESTS MAY BE REQUESTED BY THE CITY OF NEW BRAUNFELS INSPECTOR.
 12. THIS PROJECT INCLUDES UTILITY INSTALLATIONS GREATER THAN 5- FEET IN DEPTH LOCATED IN PUBLIC RIGHT-OF-WAY OR EASEMENTS. DEEP TRENCHES POSE COMPACTION TESTING AND CONSTRUCTION CHALLENGES AND CITY METHODS FOR TESTING AND COMPACTION MAY NOT BE ACHIEVABLE. A UTILITY COMPACTION PLAN WILL BE REQUIRED AND MUST BE SUBMITTED FOR APPROVAL TO CITY PRIOR TO UTILITY INSTALLATION.

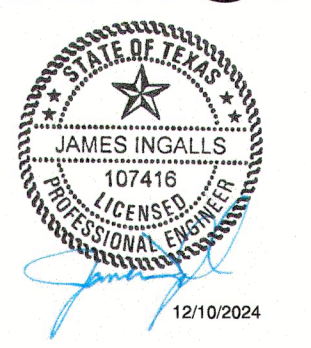


LEGEND

SS	NEW SANITARY SEWER
●	NEW MANHOLE
○	NEW SEWER LATERAL
—	NEW WATER SERVICE
—	NEW SINGLE METERED WATER SERVICE
—	NEW FIRE HYDRANT
—	EXISTING OVERHEAD ELECTRIC
—	EXISTING 8" SANITARY SEWER
—	EXISTING WOOD FENCE
—	EXISTING BARB WIRE FENCE
—	EXISTING TRAFFIC GUARDRAIL
—	EXISTING SIGN
—	EXISTING SANITARY SEWER MANHOLE
—	EXISTING UTILITY POLE
—	EXISTING GUY

JARO NORTH SUBDIVISION UNIT 1

ITEM	QTY.
WATER MAIN (8" PVC C-900)	1312 LF
WATER MAIN (12" PVC C-900)	3365 LF
WATER MAIN (8" DUCTILE IRON)	468 LF
WATER MAIN (12" DUCTILE IRON)	67 LF
WATER SERVICES	124 EA.
IRRIGATION SERVICES	3 EA.
WATER METERS	127 EA.
FIRE HYDRANTS	9 EA.
FIRE LINES	90 LF



NB DEAN, LLC
 1286 RIVER RD
 NEW BRAUNFELS, TX 78130

JARO NORTH SUBDIVISION UNIT 1

WATER DISTRIBUTION PLAN I

SHEET **40** of **49**

NO	DATE	ISSUES AND REVISIONS
1	9/21/22	UPDATE FM 758 RAMPS PER TxDOT APPROVAL
2	12-10-2024	ADDED 5 LOTS TO BLOCK 8



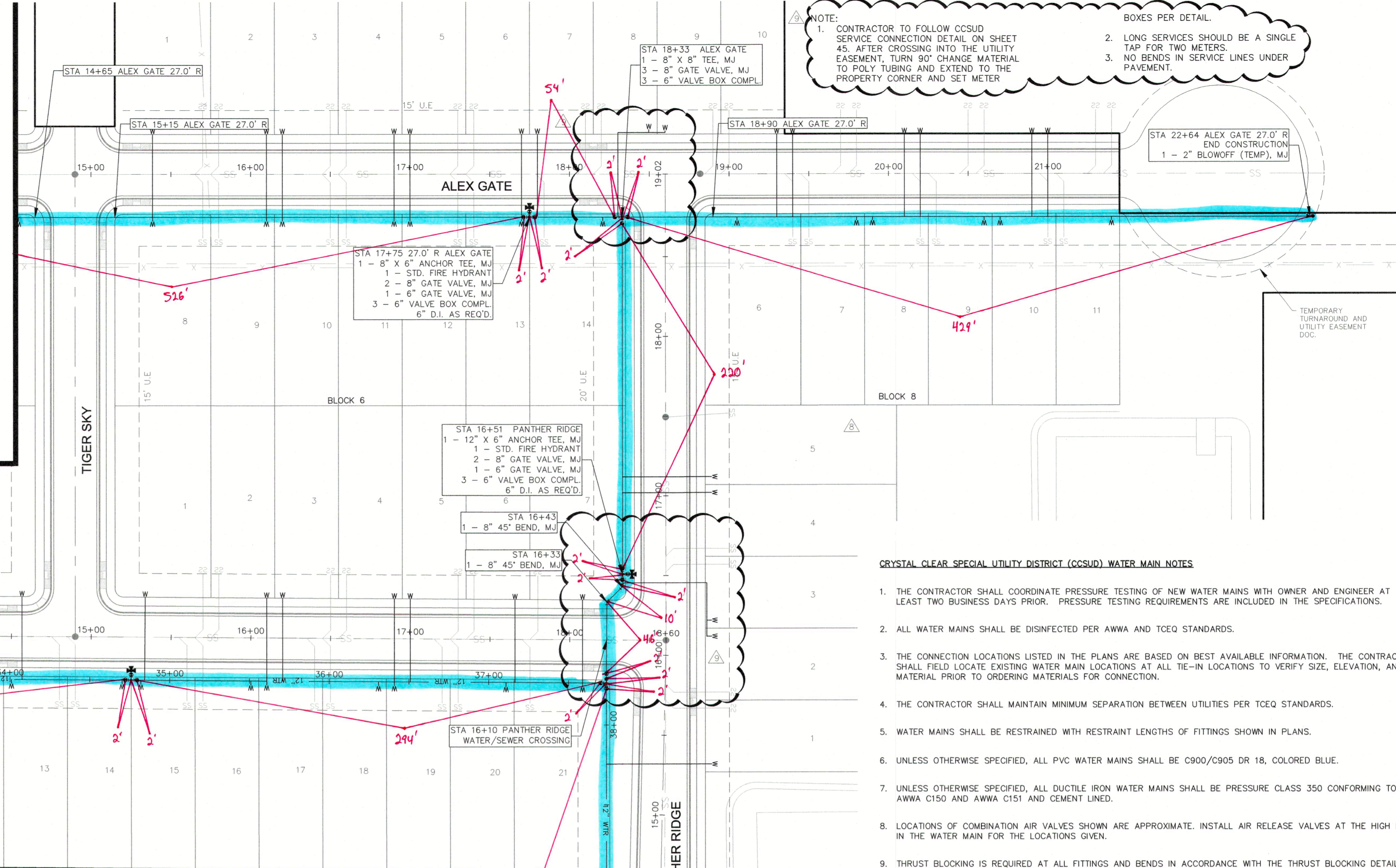
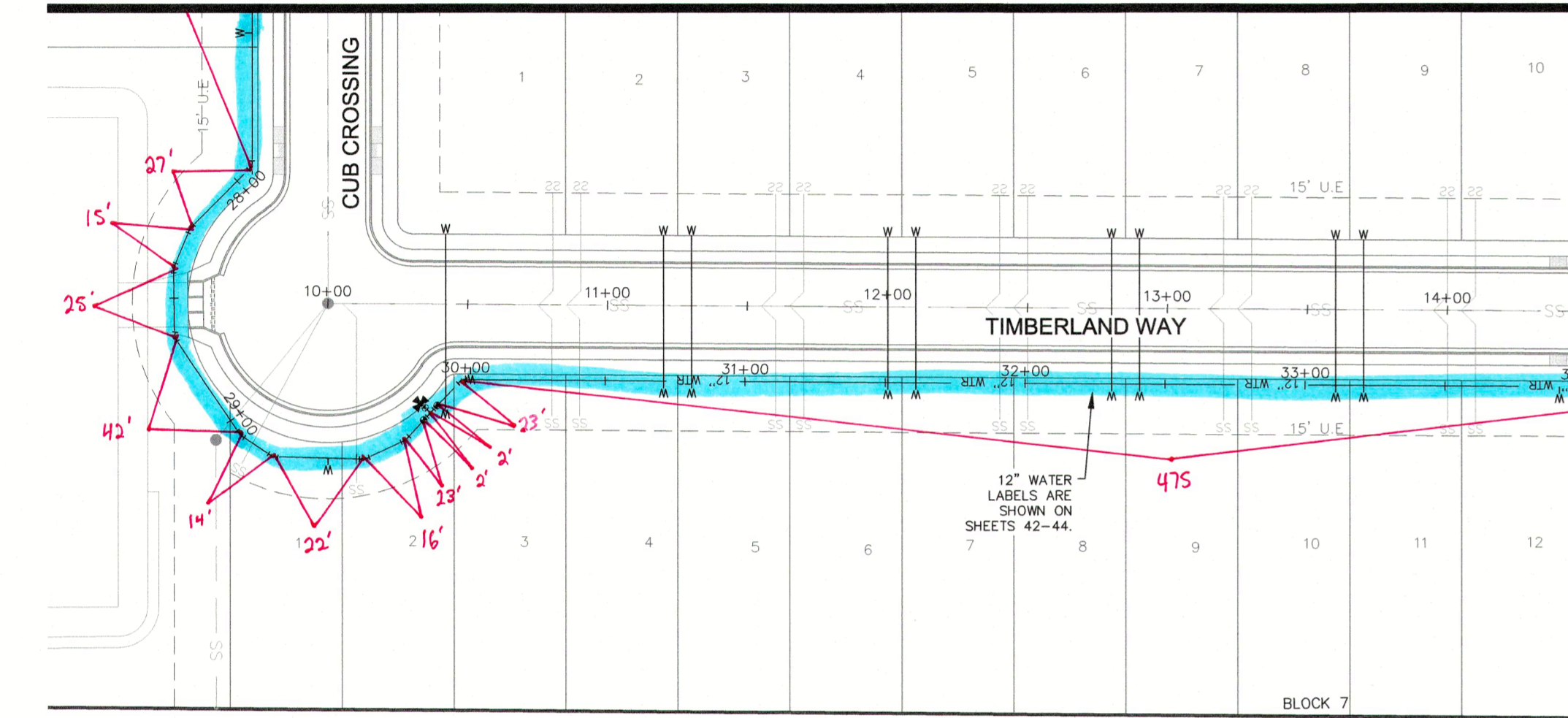
2021 W SH46, STE 105
 NEW BRAUNFELS, TX. 78132
 PH: 830-358-7127 ink-civil.com
 TBPE FIRM F-13351

- NOTES:
- STATIONING FOR 8" WATER MAINS ARE BASED ON ROAD ALIGNMENTS. STATIONING FOR 12" WATER MAINS ARE BASED ON AN ALIGNMENT ALONG THE 12" MAIN (SEE SHEET 42-44 FOR PROFILE VIEWS).
 - GATE VALVES ON FIRE HYDRANT LEADS SHALL BE RESTRAINED AT THE TEE. SEE THIS SHEET FOR CALLOUTS FOR ANCHOR TEES FOR FIRE HYDRANTS.

JARO NORTH SUBDIVISION UNIT 1	
ITEM	QTY.
WATER MAIN (8" PVC C-900)	1312 LF
WATER MAIN (12" PVC C-900)	3365 LF
WATER MAIN (8" DUCTILE IRON)	468 LF
WATER MAIN (12" DUCTILE IRON)	67 LF
WATER SERVICES	124 EA.
IRRIGATION SERVICES	3 EA.
WATER METERS	127 EA.
FIRE HYDRANTS	9 EA.
FIRE LINES	90 LF

NOTE:
12" WATER LABELS ARE SHOWN ON SHEETS 42-44. LABELS FOR THE CONNECTION POINTS FROM 12" TO 8" ARE SHOWN ON THIS SHEET FOR REFERENCE.

MATCHLINE A - A
(SEE SHEET 40)



- NOTE:
- CONTRACTOR TO FOLLOW CCSDU SERVICE CONNECTION DETAIL ON SHEET 45. AFTER CROSSING INTO THE UTILITY EASEMENT, TURN 90° CHANGE MATERIAL TO POLY TUBING AND EXTEND TO THE PROPERTY CORNER AND SET METER.
 - LONG SERVICES SHOULD BE A SINGLE TAP FOR TWO METERS.
 - NO BENDS IN SERVICE LINES UNDER PAVEMENT.

LEGEND

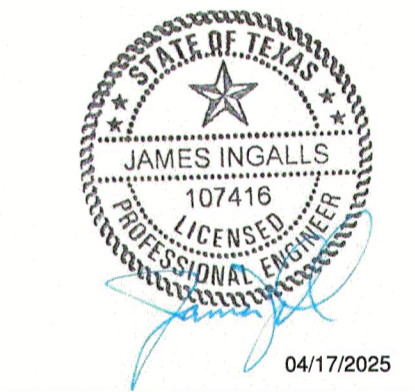
- SS NEW SANITARY SEWER
- NEW MANHOLE
- NEW SEWER LATERAL
- NEW WATER SERVICE
- NEW SINGLE METERED WATER SERVICE
- NEW FIRE HYDRANT
- EXISTING OVERHEAD ELECTRIC
- EXISTING 8" SANITARY SEWER
- EXISTING WOOD FENCE
- EXISTING BARB WIRE FENCE
- EXISTING TRAFFIC GUARDRAIL
- EXISTING SIGN
- EXISTING SANITARY SEWER MANHOLE
- EXISTING UTILITY POLE
- EXISTING GUY

CRYSTAL CLEAR SPECIAL UTILITY DISTRICT (CCSUD) WATER MAIN NOTES

- THE CONTRACTOR SHALL COORDINATE PRESSURE TESTING OF NEW WATER MAINS WITH OWNER AND ENGINEER AT LEAST TWO BUSINESS DAYS PRIOR. PRESSURE TESTING REQUIREMENTS ARE INCLUDED IN THE SPECIFICATIONS.
- ALL WATER MAINS SHALL BE DISINFECTED PER AWWA AND TCEQ STANDARDS.
- THE CONNECTION LOCATIONS LISTED IN THE PLANS ARE BASED ON BEST AVAILABLE INFORMATION. THE CONTRACTOR SHALL FIELD LOCATE EXISTING WATER MAIN LOCATIONS AT ALL TIE-IN LOCATIONS TO VERIFY SIZE, ELEVATION, AND MATERIAL PRIOR TO ORDERING MATERIALS FOR CONNECTION.
- THE CONTRACTOR SHALL MAINTAIN MINIMUM SEPARATION BETWEEN UTILITIES PER TCEQ STANDARDS.
- WATER MAINS SHALL BE RESTRAINED WITH RESTRAINT LENGTHS OF FITTINGS SHOWN IN PLANS.
- UNLESS OTHERWISE SPECIFIED, ALL PVC WATER MAINS SHALL BE C900/C905 DR 18, COLORED BLUE.
- UNLESS OTHERWISE SPECIFIED, ALL DUCTILE IRON WATER MAINS SHALL BE PRESSURE CLASS 350 CONFORMING TO AWWA C150 AND AWWA C151 AND CEMENT LINED.
- LOCATIONS OF COMBINATION AIR VALVES SHOWN ARE APPROXIMATE. INSTALL AIR RELEASE VALVES AT THE HIGH POINT IN THE WATER MAIN FOR THE LOCATIONS GIVEN.
- THRUST BLOCKING IS REQUIRED AT ALL FITTINGS AND BENDS IN ACCORDANCE WITH THE THRUST BLOCKING DETAIL PROVIDED AND SPECIFICATION SECTION 02680 - JOINT RESTRAINTS AND THRUST BLOCKING.
- THE OWNER SHALL SUPPLY ALL WATER NEEDED FOR CONSTRUCTION TESTING AND DISINFECTION. THE CONTRACTOR SHALL NOT BE REQUIRED TO PAY FOR THIS WATER.
- UNLESS NOTED OTHERWISE, ALL WATER MAIN P.I.'S SHALL BE ACHIEVED USING THE WATER MAIN MANUFACTURER'S ALLOWABLE JOINT DEFLECTION.
- WATER MAINS AND VALVES THAT ARE ABANDONED IN PLACE SHALL BE CUT AND PLUGGED PER SPECIFICATION SECTION 02500 - ABANDONMENT OF WATER INFRASTRUCTURE.
- REMOVE ONLY VEGETATION, TREES, STUMPS, RUBBISH, AND OTHER MATERIAL NECESSARY FOR CONSTRUCTION AND DISPOSE OF OFF SITE.
- CONSTRUCTION OF ALL CCSUD WATER UTILITY INFRASTRUCTURE MUST ADHERE TO CCSUD'S TECHNICAL SPECIFICATIONS, DETAILS AND APPROVED EQUIPMENT LIST.

CONSTRUCTION NOTES:

- WHERE WATER LINES AND NEW SEWER LINES ARE INSTALLED WITH A SEPARATION DISTANCE CLOSER THAN NINE FEET (I.E., WATER LINES CROSSING WASTEWATER LINES, WATER LINES PARALLELING WASTEWATER LINES, OR WATER LINES NEXT TO MANHOLES) THE INSTALLATION MUST MEET THE REQUIREMENTS OF 30 TAC §217.53(D) (PIPE DESIGN) AND 30 TAC §290.44(E) (WATER DISTRIBUTION).
- WHERE A 9" (NINE FOOT) SEPARATION FROM WATER AND SEWER LINES CROSSING CANNOT BE MAINTAINED, THE NEW WATER LINE SHALL BE ABOVE THE SEWER LINE AS SHOWN ON THE WATER/SEWER LINE CROSSING DETAIL. AT NO TIME SHALL A WATER LINE OR WATER SERVICE BE PLACED UNDER A SEWER LINE OR SEWER SERVICE.
- WHERE A NEW POTABLE WATERLINE CROSSES AN EXISTING, PRESSURE RATED WASTEWATER MAIN OR LATERAL, ONE SEGMENT OF THE WATERLINE PIPE SHALL BE CENTERED OVER THE WASTEWATER MAIN OR LATERAL SUCH THAT THE JOINTS OF THE WATERLINE PIPE ARE EQUIDISTANT AND AT LEAST NINE FEET HORIZONTALLY FROM THE CENTERLINE OF THE WASTEWATER MAIN OR LATERAL. THE POTABLE WATERLINE SHALL BE AT LEAST SIX INCHES ABOVE THE WASTEWATER MAIN OR LATERAL WHENEVER POSSIBLE. IF THE EXISTING WASTEWATER MAIN OR LATERAL SHOWS SIGNS OF LEAKING, IT SHALL BE REPLACED FOR AT LEAST NINE FEET IN BOTH DIRECTIONS (18 FEET TOTAL) WITH AT LEAST 150 PSI PRESSURE RATED PIPE.
- ALL PRIVATE SERVICE LATERALS MUST BE INSPECTED AND CERTIFIED IN ACCORDANCE WITH 30 TAC §213.5(C)(3)(i). AFTER INSTALLATION OF AND, PRIOR TO COVERING AND CONNECTING A PRIVATE SERVICE LATERAL TO AN EXISTING ORGANIZED SEWAGE COLLECTION SYSTEM, A TEXAS LICENSED PROFESSIONAL ENGINEER, TEXAS REGISTERED SANITARIAN, OR APPROPRIATE CITY INSPECTOR MUST VISUALLY INSPECT THE PRIVATE SERVICE LATERAL AND THE CONNECTION TO THE SEWAGE COLLECTION SYSTEM, AND CERTIFY THAT IT IS CONSTRUCTED IN CONFORMITY WITH THE APPLICABLE PROVISIONS OF THIS SECTION. THE OWNER OF THE COLLECTION SYSTEM MUST MAINTAIN SUCH CERTIFICATIONS FOR FIVE YEARS AND FORWARD COPIES TO THE APPROPRIATE REGIONAL OFFICE UPON REQUEST. CONNECTIONS MAY ONLY BE MADE TO AN APPROVED SEWAGE COLLECTION SYSTEM.
- FIRE HYDRANTS SHALL NOT BE INSTALLED WITHIN NINE FEET VERTICALLY OR HORIZONTALLY OF ANY WASTEWATER MAIN, WASTEWATER LATERAL, OR WASTEWATER SERVICE LINE REGARDLESS OF CONSTRUCTION.
- METER BOXES MUST BE SET AT PROPOSED FINISHED GRADE. ANY METER BOXES THAT ARE NOT SET AT THE FINAL GRADE WILL BE ADJUSTED BY THE CONTRACTOR AT NO ADDITIONAL COSTS.
- CONTRACTOR TO COORDINATE WITH NBU IF EXISTING WATER MAINS WILL BE REMOVED FROM SERVICE AT ANY TIME.
- ALL UTILITIES SHALL BE CONSTRUCTED PRIOR TO STREETS.
- ENSURE ALL DRIVEWAY APPROACHES ARE BUILT IN GENERAL ACCORDANCE WITH A.D.A. SPECIFICATIONS.
- NO VALVES, FIRE HYDRANTS, ETC. SHALL BE CONSTRUCTED WITHIN CURBS, SIDEWALKS OR DRIVEWAYS.
- ALL UTILITY TRENCH COMPACTION TESTS WITHIN THE STREET PAVEMENT SECTION SHALL BE THE RESPONSIBILITY OF THE DEVELOPER'S GEO-TECHNICAL ENGINEER. FILL MATERIAL SHALL BE PLACED IN UNIFORM LAYERS NOT TO EXCEED TWELVE INCHES (12") LOOSE. DETERMINE THE MAXIMUM LIFT THICKNESS BASED ON THE ABILITY OF THE COMPACTION OPERATION AND EQUIPMENT USED TO MEET THE REQUIRED DENSITY. EACH LAYER OF MATERIAL SHALL BE COMPACTED TO A MINIMUM 95% DENSITY AND TESTED FOR DENSITY AND MOISTURE IN ACCORDANCE WITH TEST METHODS TEX-113-E, TEX-114-E, TEX-115-E. THE NUMBER AND LOCATION OF REQUIRED TESTS SHALL BE DETERMINED BY THE GEO- TECHNICAL ENGINEER AND APPROVED BY THE CITY OF NEW BRAUNFELS STREET INSPECTOR. AT A MINIMUM, TESTS SHALL BE TAKEN EVERY 200LF FOR EACH LIFT AND EVERY OTHER SERVICE LINE. UPON COMPLETION OF TESTING THE GEO-TECHNICAL ENGINEER SHALL PROVIDE THE CITY OF NEW BRAUNFELS STREET INSPECTOR WITH ALL TESTING DOCUMENTATION AND A CERTIFICATION STATING THAT THE PLACEMENT OF FILL MATERIAL HAS BEEN COMPLETED IN ACCORDANCE WITH THE PLANS. ADDITIONAL DENSITY TESTS MAY BE REQUESTED BY THE CITY OF NEW BRAUNFELS INSPECTOR.
- THIS PROJECT INCLUDES UTILITY INSTALLATIONS GREATER THAN 5- FEET IN DEPTH LOCATED IN PUBLIC RIGHT-OF-WAY OR EASEMENTS. DEEP TRENCHES POSE COMPACTION TESTING AND CONSTRUCTION CHALLENGES AND CITY METHODS FOR TESTING AND COMPACTION MAY NOT BE ACHIEVABLE. A UTILITY COMPACTION PLAN WILL BE REQUIRED AND MUST BE SUBMITTED FOR APPROVAL TO CITY PRIOR TO UTILITY INSTALLATION.



NB DEAN, LLC
1286 RIVER RD
NEW BRAUNFELS, TX 78130

JARO NORTH SUBDIVISION
UNIT 1
WATER DISTRIBUTION PLAN II

SHEET
41 OF 49

NO	DATE	ISSUES AND REVISIONS
5-28-2024	REVISED PER CCSUD COMMENTS	
12-10-2024	ADDED 5 LOTS TO BLOCK 8	
04-16-2025	REVISED PER CCSUD COMMENTS	



2021 W SH46, STE 105
NEW BRAUNFELS, TX. 78132
PH: 830-358-7127 ink-civil.com
TBPE FIRM F-13351

CONTRACTOR SHALL NOTIFY THE FOLLOWING UTILITY COMPANIES 48 HOURS PRIOR TO EXCAVATION:

City of Seguin Utilities (Sewer)	830-396-2222
Crystal Clear SUD	830-372-1031
Spectrum Cable	830-625-3408
Centerpoint Gas	830-643-6434
Robert Sanders	830-643-6903
Damaged Line	888-876-5786
AT&T Telephone	830-303-1333
Erick White PM	210-283-1706
Scott McCreary (Construction)	210-658-4886
Texas One Call	830-545-6005

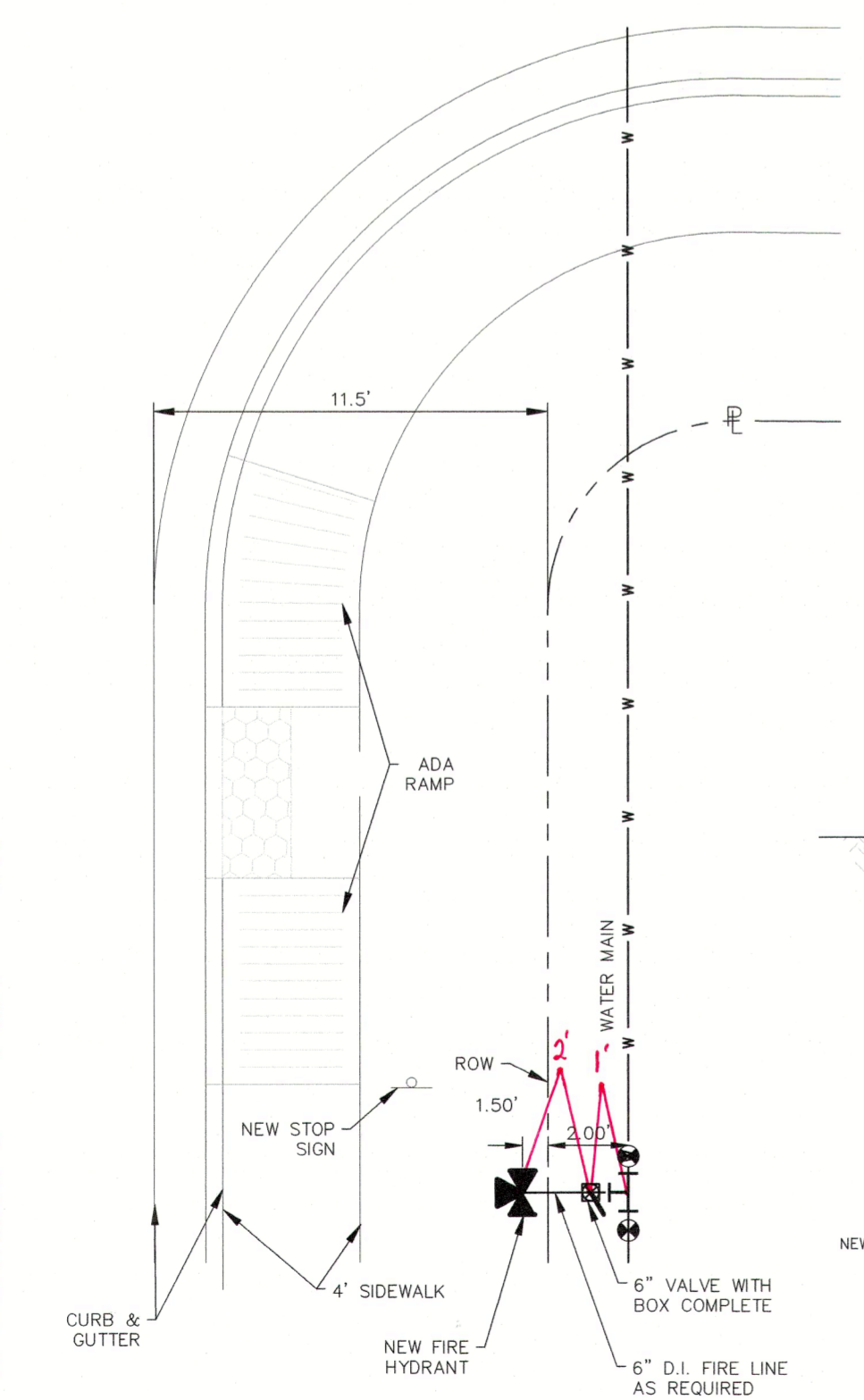
C.P.E. LOCATOR
CALL CENTER POINT ENERGY LOCATOR AT 1-800-545-6005, 48HRS BEFORE BEGINNING ANY EXCAVATION. DUE TO FEDERAL REGULATIONS TITLE 49, PART 192.161, CENTER POINT ENERGY MUST MAINTAIN ACCESS TO GAS VALVES AT ALL TIMES. THE CONTRACTOR MUST PROTECT AND WORK AROUND ANY GAS VALVES THAT ARE IN THE PROJECT AREA.

TELEPHONE LOCATOR
THE EXISTENCE AND LOCATION OF UNDERGROUND CABLE INDICATED ON THE PLANS ARE TAKEN FROM THE BEST RECORDS AVAILABLE AND ARE NOT GUARANTEED TO BE ACCURATE. CONTRACTOR TO CONTACT THE TELEPHONE COMPANY CABLE LOCATOR 48HRS PRIOR TO EXCAVATION AT 1-800-545-6005. CONTRACTOR HAS THE RESPONSIBILITY TO PROTECT AND SUPPORT TELEPHONE COMPANY DURING CONSTRUCTION.

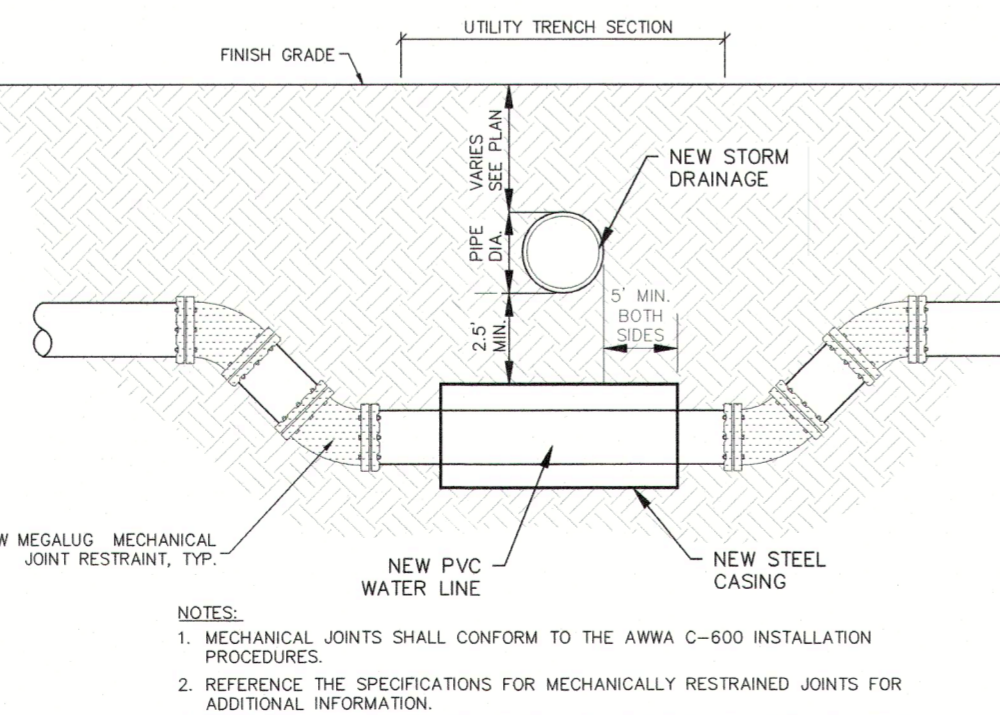
TRENCH EXCAVATION SAFETY PROTECTION
CONTRACTOR AND/OR CONTRACTOR'S INDEPENDENTLY RETAINED EMPLOYEE OR STRUCTURAL DESIGN/GEOTECHNICAL/SAFETY/EQUIPMENT CONSULTANT, IF ANY, SHALL REVIEW THESE PLANS AND AVAILABLE GEOTECHNICAL INFORMATION AND THE ANTICIPATED INSTALLATION SITE(S) WITHIN THE PROJECT WORK AREA IN ORDER TO IMPLEMENT CONTRACTOR'S TRENCH EXCAVATION SAFETY PROTECTION SYSTEMS, PROGRAMS AND/OR PROCEDURES FOR THE PROJECT DESCRIBED IN THE CONTRACT DOCUMENTS. THE CONTRACTOR'S IMPLEMENTATION OF THESE SYSTEMS, PROGRAMS AND/OR PROCEDURES SHALL PROVIDE FOR ADEQUATE TRENCH EXCAVATION SAFETY PROTECTION THAT COMPLY WITH AS A MINIMUM OSHA STANDARDS FOR TRENCH EXCAVATIONS. SPECIFICALLY, CONTRACTOR AND/OR CONTRACTOR'S INDEPENDENTLY RETAINED EMPLOYEE OR SAFETY CONSULTANT SHALL IMPLEMENT A TRENCH SAFETY PROGRAM IN ACCORDANCE WITH OSHA STANDARDS GOVERNING THE PRESENCE AND ACTIVITIES OF INDIVIDUALS WORKING IN AND AROUND TRENCH EXCAVATIONS.

THE LOCATION OF ALL EXISTING UNDERGROUND UTILITIES ARE SHOWN IN AN APPROXIMATE LOCATIONS ONLY. THE CONTRACTOR SHALL DETERMINE THE EXACT LOCATION OF ALL EXISTING UTILITIES BEFORE COMMENCING WORK. THE CONTRACTOR WILL AGREE TO BE FULLY RESPONSIBLE FOR ANY AND ALL DAMAGES WHICH MIGHT BE INCURRED BY THEIR FAILURE TO EXACTLY LOCATE AND PRESERVE ANY AND ALL UNDERGROUND UTILITIES, STRUCTURES OR FACILITIES. CONTRACTOR SHALL NOTIFY ENGINEER OF ANY DISCREPANCIES 24-HOURS PRIOR TO COMMENCING CONSTRUCTION.

FIRE HYDRANT LOCATION DETAIL
SCALE: NTS



WATER LINE / STORM DRAINAGE CROSSING DETAIL
(NOT TO SCALE)



Drawing Name: N:\Projects\1802025\Jaros\Jaros_Schedule\Construction\Drawing\11 WATER DISTRIBUTION PLAN II.dwg User: jordanng@ink.com Apr 17, 2025 7:32am