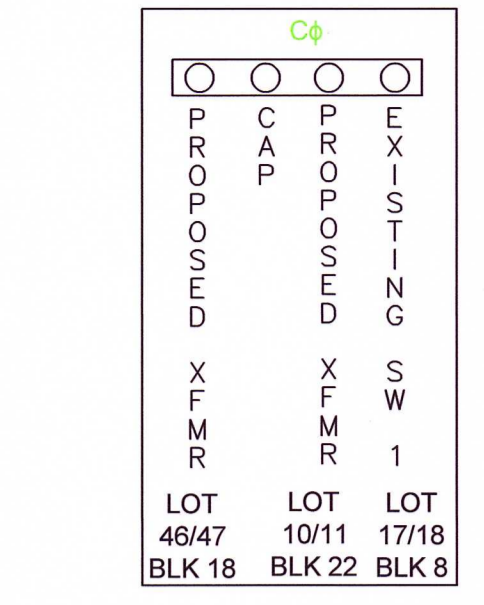
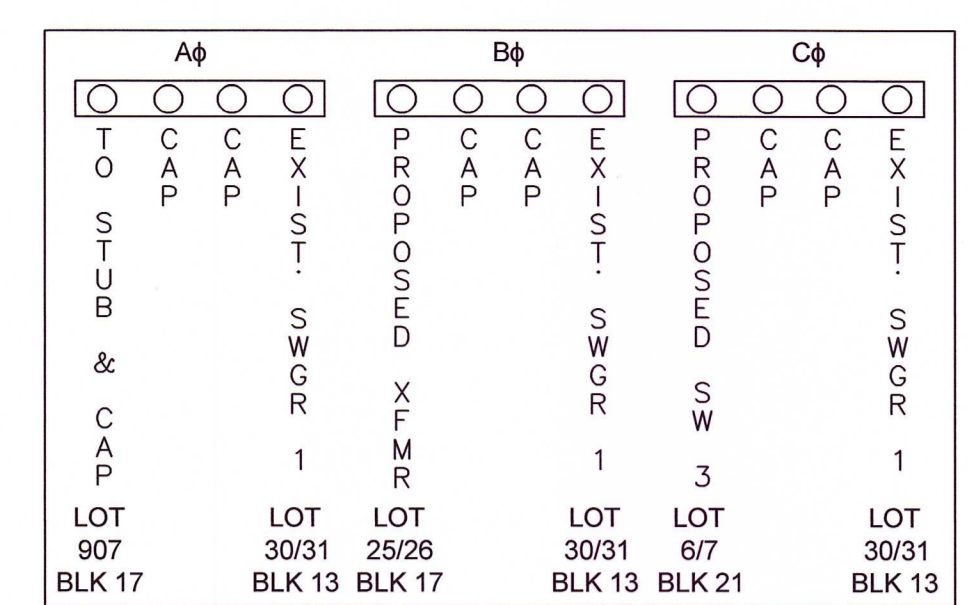


N
 W M.E.I. E
 S
WO# 2061826
216 LOTS
26 LIGHTS
Upline Device
YC301
14.4/24.9 kV



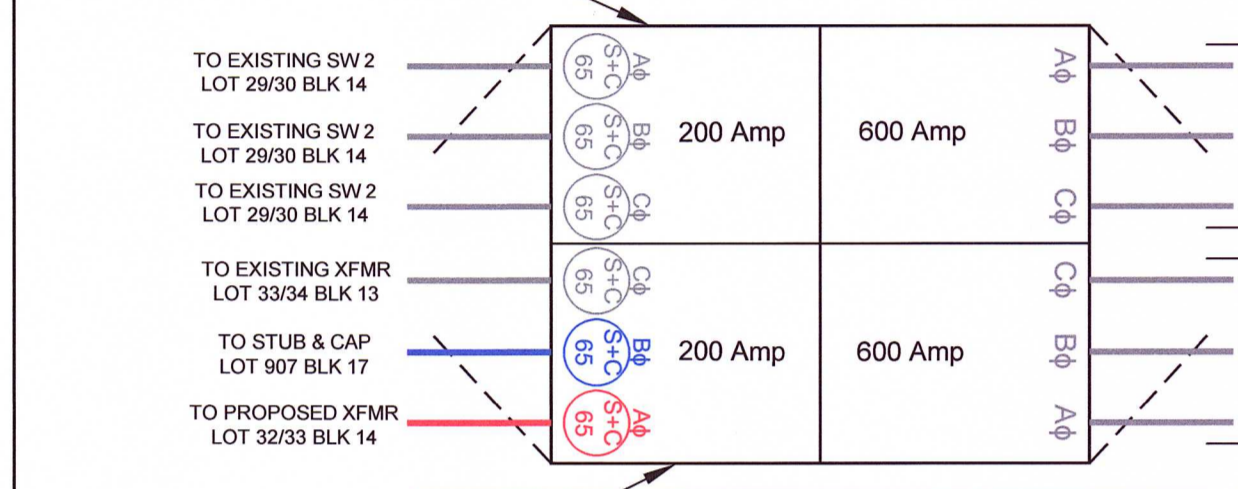
DETAIL 10: PROPOSED SW 7
PROPOSED C₃ SWITCH CABINET



DETAIL 2: EXISTING SW 2
EXISTING C₃ SWITCH CABINET

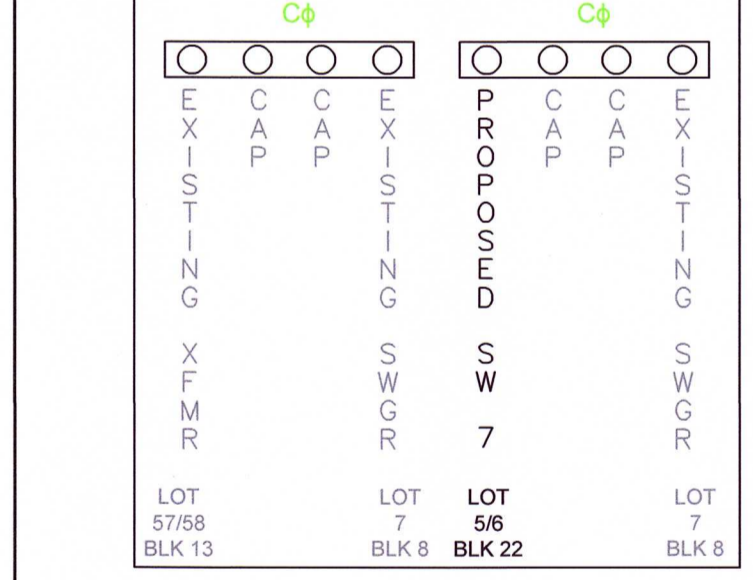
Material List		
Quantity	CU	Description
11,019	U1/0AL25KV	1/0 AL 25KV Aluminum URD Primary Cable
1,328	U1000AL25KV	1000 MCM Aluminum URD Primary Cable
2,143	U12/2UFW/GRD	12/2 UF Copper with Ground Street Light Cable
103	U2ALTP	#2 URD Triplex Secondary Cable
8,980	U350ALTP	350 MCM URD Triplex Secondary Cable
321	U4/0ALTP	4/0 MCM URD Triplex Secondary Cable
76	UK6-350	Secondary Pedestal, Fed with 350 MCM URD Triplex
5	UK6-4-0	Secondary Pedestal, Fed with 4/0 MCM URD Triplex
1	UM3E-3-9	Three Phase 600 Amp Dead Front Switchgear with 2 Source and 2-200 Amp Load Compartments
26	UP30-5AL	30 ft. Aluminum Street Light Pole
26	M60-C3LED	54W LED Type 3 LT for Aluminum Pole
1,103	UPVC 1	1" Schedule 40 PVC
25,709	UPVC 2 1/2	2.5" Schedule 40 PVC
962	UPVC 4	4" Schedule 40 PVC
2	UVG5- Small	14.4 kv Single Phase Open Transformer (75kVA and Below)
4	UVG5- Large	14.4 kv Single Phase Open Transformer (100kVA and Above)
16	UVG7- Small	14.4 kv Single Phase Loop Transformer (75kVA and Below)
11	UVG7- Large	14.4 kv Single Phase Loop Transformer (100kVA and Above)
15	100 PAD 14.4 120	100kVA Padmount Transformer
14	75 PAD 14.4 120	75kVA Padmount Transformer
2	50 PAD 14.4 120	50kVA Padmount Transformer
2	37.5 PAD 14.4 120	37.5kVA Padmount Transformer
1	UVM2-5W-477	14.4kv Three Phase Pothead Wood Pole 477 OH
3	UVM31-3	1 Phase Switch Cabinet, 3-Way
1	UVM32-3	2 Phase Switch Cabinet, 3-Way
1	UVM33-2-600	3 Phase Switch Cabinet, 2-Way, 600 Amp

PHASE	LOTS	
	PROPOSED UNIT 4	TOTAL
A ₄	0	0
B ₄	57	57
C ₄	94	94



DETAIL 3: EXISTING SWGR 1 (PME-9)
EXISTING SWITCHGEAR LAYOUT

PHASE	LOTS		
	PROPOSED UNIT 4	EXISTING	TOTAL
A ₄	65	0	65
B ₄	6	0	6
C ₄	0	60	60



DETAIL 1: EXISTING SW 1
EXISTING C₃ SWITCH CABINET

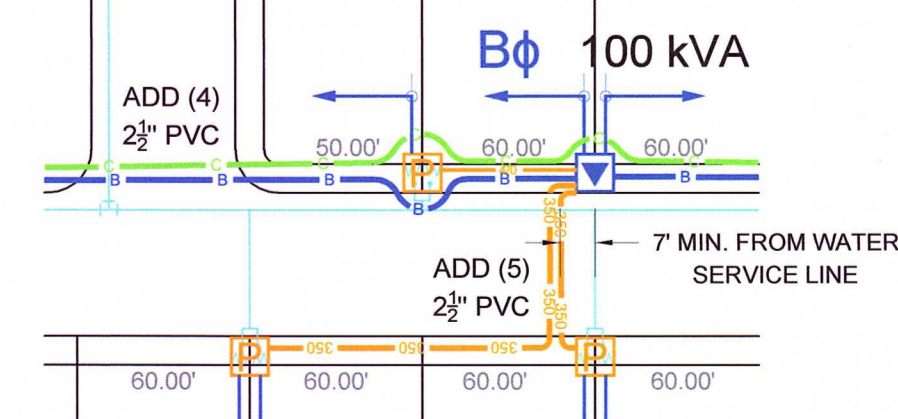
- LEGEND:**
- PROPOSED POLE
 - PROPOSED POLE WITH RISER(S)
 - EXISTING POLE
 - STREET LIGHT
 - SINGLE PHASE PAD MOUNT TRANSFORMER
 - THREE PHASE PAD MOUNT TRANSFORMER
 - SINGLE PHASE POLE MOUNT TRANSFORMER (NOT INCLUDED IN PROJECT SCOPE)
 - SECONDARY PEDESTAL
 - OPEN POINT
 - SWITCH
 - SWITCHGEAR
 - PULL BOX
 - WATER METERS
 - A-PHASE PRIMARY UNDERGROUND - 1/0 AL 25KV IN (1) 2" PVC CONDUIT
 - B-PHASE PRIMARY UNDERGROUND - 1/0 AL 25KV IN (1) 2" PVC CONDUIT
 - C-PHASE PRIMARY UNDERGROUND - 1/0 AL 25KV IN (1) 2" PVC CONDUIT
 - 3-PHASE PRIMARY UNDERGROUND - 3-PHASE 1/0 AL 25KV IN (3) 2" PVC CONDUIT
 - 1000 PRIMARY UNDERGROUND - 3-PHASE 1000 MCM AL 25KV IN (3) 4" PVC CONDUIT WITH (1) 2" PVC CONDUIT FOR FIBER
 - 350 SECONDARY UNDERGROUND - 350 TPLX IN (1) 2" PVC CONDUIT WITH (1) 2" SPARE CONDUIT
 - 4/0 SECONDARY UNDERGROUND - 4/0 TPLX IN (1) 2" PVC CONDUIT
 - #2 SECONDARY UNDERGROUND - #2 TPLX IN (1) 2" PVC CONDUIT
 - 12/2 SECONDARY STREETLIGHT CIRCUIT - 12/2 WIGND IN (1) 1" PVC CONDUIT
 - FUTURE SERVICE STUB-OUT (CONDUIT ONLY)
 - PROPOSED WATER LINES (BY OTHERS)

GENERAL NOTES:

- FOR FUTURE TEMPORARY SERVICE, STUB OUT (1) 2" FLEXIBLE ELECTRICAL PVC CONDUIT 6" BELOW GRADE CENTERED IN FRONT OF ALL TRANSFORMERS AND PEDESTALS. WHEN TEMPORARY SERVICE IS RETIRED, CUT OFF AND CAP 6" BELOW FINISHED GRADE.
- VERIFY ALL UNDERGROUND UTILITIES BEFORE DIGGING.
- GVEC STAFF WILL NOTIFY CONSTRUCTION CREWS WHEN TO PROCEED WITH INSTALLATION OF THE UNDERGROUND SYSTEM.
- GVEC TO HAVE A 5' WIDE ELECTRIC EASEMENT ON ALL ROAD CROSSINGS IN WHICH ELECTRIC LINES ARE PLACED.
- INSTALL THE CORRECT KV RATED PARKING STAND ARRESTORS AND LIGHTNING ARRESTORS FOR ALL OPEN POINT TRANSFORMERS.
- ALL UNDERGROUND CONDUIT FOR GVEC ELECTRIC FACILITIES TO BE SCHEDULE 40, GRAY PVC UNLESS OTHERWISE SPECIFIED BY GVEC STAFF.
- WATER PROVIDED BY CRYSTAL CLEAR SUD.
- SEWER PROVIDED BY CITY OF SEGUIN.
- ALL CROSSINGS TO BE INSTALLED BY THE DEVELOPER'S CIVIL CONTRACTOR ACCORDING TO THE GVEC APPROVED FOR CONSTRUCTION DESIGN. ALL ROAD CROSSINGS MUST CROSS ANY WET UTILITIES THAT ARE IN THE ROADWAY OR ROW AS WELL AND BE INSPECTED BY GVEC PERSONNEL.

DETAIL 9: PROPOSED SW 6
PROPOSED C₃ 600 AMP SWITCH CABINET

DETAIL 7: PROPOSED SW 5
PROPOSED C₃ (A₄, C₄) SWITCH CABINET



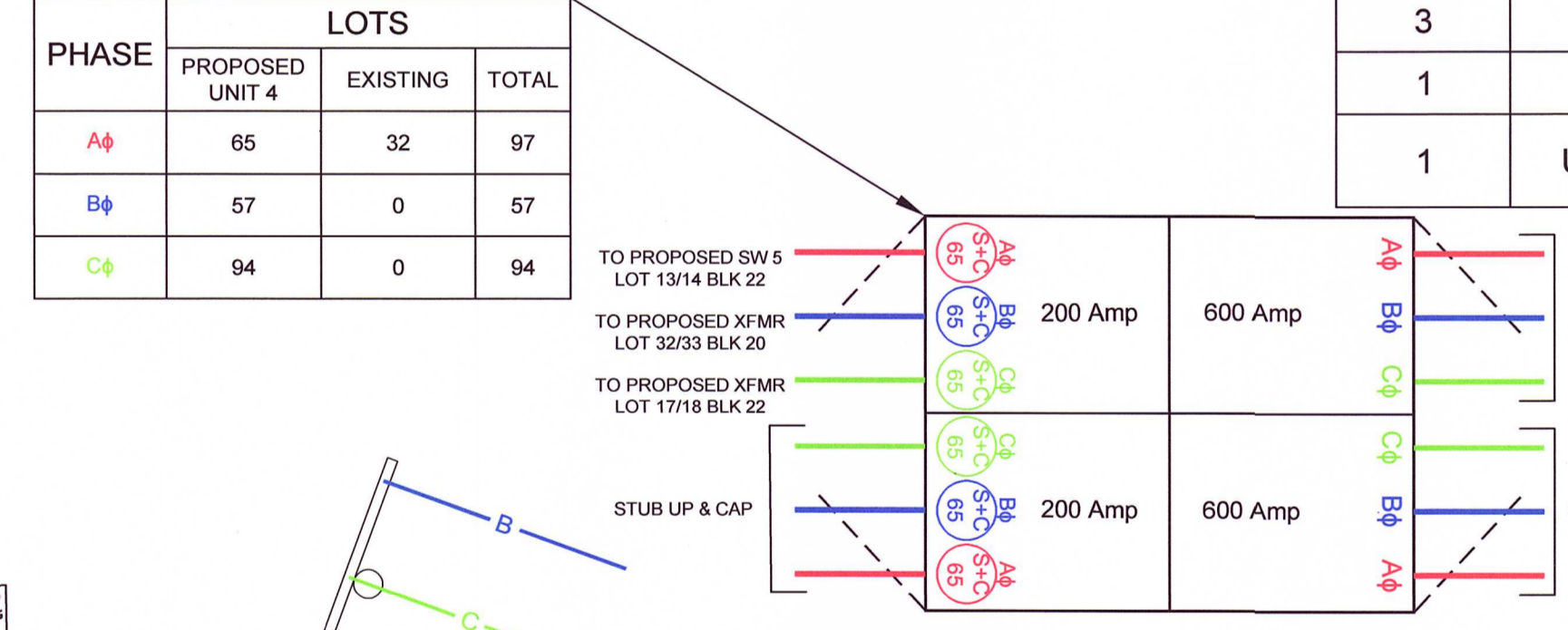
ROAD CROSSING DETAIL - REQUIRED CLEARANCE
FROM WATER MAIN AND SERVICE LINES

ALL ELECTRIC CONDUITS PARALLEL WITH WATER MAIN OR SERVICE LINES TO HAVE SEVEN FOOT (7') HORIZONTAL CLEARANCE.

PHASE	LOTS		
	PROPOSED UNIT 4	EXISTING	TOTAL
A ₄	65	32	97
B ₄	57	0	57
C ₄	94	0	94

DETAIL 5: PROPOSED SW 3
PROPOSED C₃ SWITCH CABINET

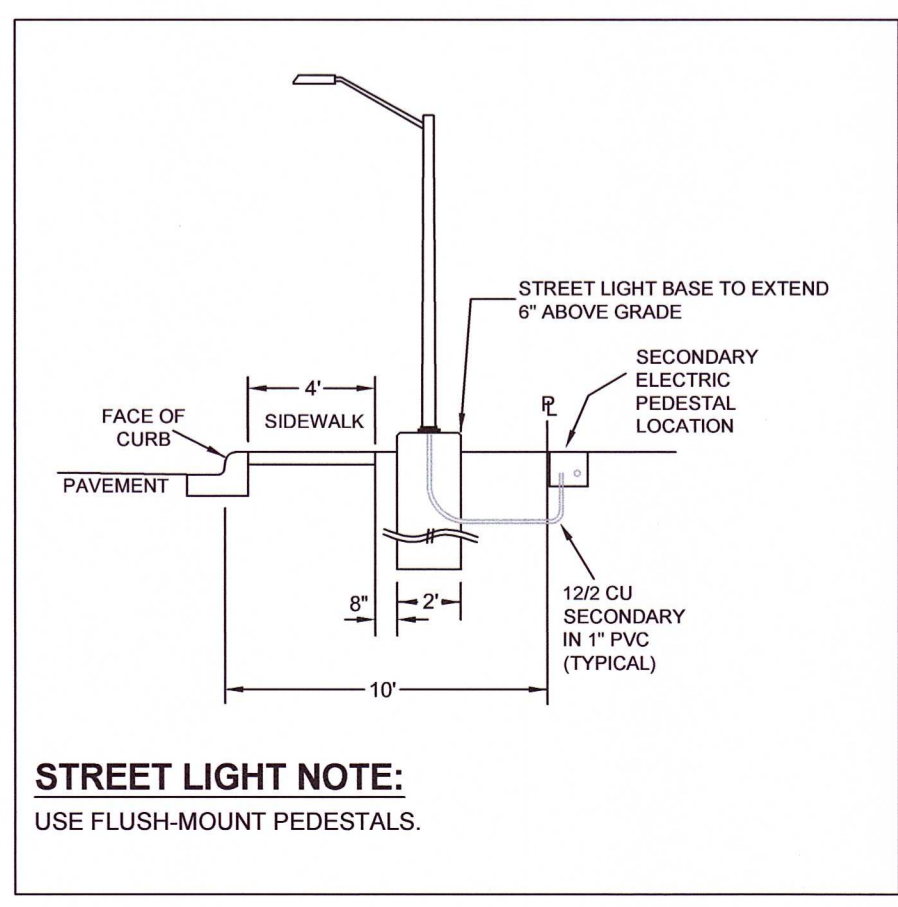
DETAIL 6: PROPOSED SW 4
PROPOSED A₄ SWITCH CABINET



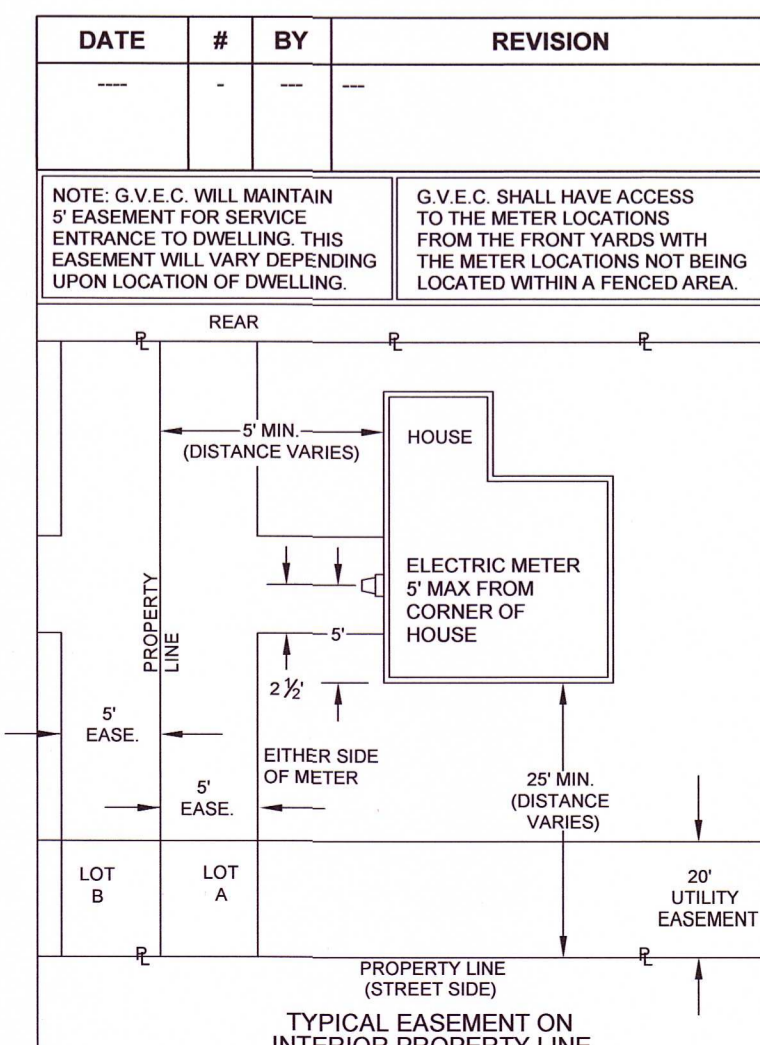
DETAIL 8: PROPOSED SWGR 2 (PME-9)
PROPOSED SWITCHGEAR LAYOUT

DETAIL 11: PROPOSED RISER 1 - 600 AMP

- ON PROPOSED RISER POLE, INSTALL:
- ONE (1) A₄ RISER AND ONE (1) 600 AMP DISCONNECT BLADE SWITCH
 - ONE (1) B₄ RISER AND ONE (1) 600 AMP DISCONNECT BLADE SWITCH
 - ONE (1) C₄ RISER AND ONE (1) 600 AMP DISCONNECT BLADE SWITCH



STREET LIGHT NOTE:
USE FLUSH-MOUNT PEDESTALS.



McCord Engineering Inc.
 LICENSED PROFESSIONAL ENGINEER
 STATE OF TEXAS
 87089
 F-2664
 11-24-2025

THE SEAL APPEARING ON THIS DOCUMENT WAS AUTHORIZED BY
 REX N. WOODS, P.E. 87089
 NOVEMBER 21, 2025
 NOT VALID UNLESS SIGNED.
 ALTERATION OF A SEALED DOCUMENT WITHOUT PROPER NOTIFICATION TO THE RESPONSIBLE ENGINEER IS AN OFFENSE UNDER THE TEXAS ENGINEERING PRACTICE ACT.

APPROVED FOR CONSTRUCTION

gvec
 Delivering more.
 GUADALUPE VALLEY ELECTRIC CO-OP., INC.
 P.O. BOX 118 - 825 E. SARAH DeWitt DR.
 GONZALES, TEXAS 78629-0118
 830-672-2871
 1800-223-GVEC(4832)
 FAX 210-672-9841
 e-mail info@gvec.org

DATE	#	BY	REVISION
11/21/2025		EH	JARO NORTH UNIT 4
11/21/2025		EH	

DATE: 11/21/2025 JOB NAME: JARO NORTH UNIT 4
 DRAWN BY: EH
 CHECKED BY: EH
 DATE: 11/21/2025 WORK ORDER #: WO# 2061826
 SCALE: 1"=100' DWG NO: MEI-18908
 SHEET NO: 1 OF 1
 DRAWN BY: EH JOB CODE: GVC-3-J-6 REV: 0