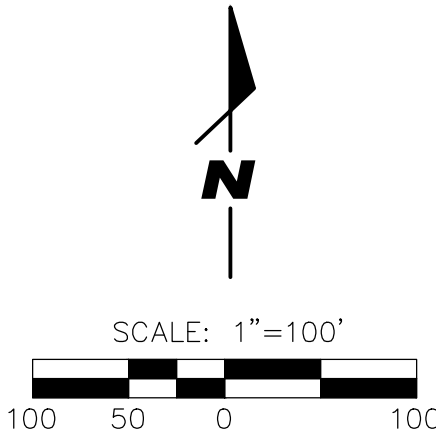


PLAT NO. 22-11800295



NOTE:  
CONTRACTOR TO LOCATE AND FIELD VERIFY ALL EXISTING UTILITIES INCLUDING, BUT NOT LIMITED TO, WATER LINES, GAS LINES, SEWER LINES AND ELECTRIC LINES.

**CAUTION:**

THE CONTRACTOR SHALL EXERCISE EXTREME CARE WHEN WORKING UNDER "HIGH VOLTAGE TRANSMISSION LINES". A WORKING HEIGHT OF 30 FEET FROM GROUND ELEVATION WILL BE OBSERVED WHEN WORKING UNDER HIGH VOLTAGE LINES. THE CONTRACTOR SHALL COORDINATE WITH THE UTILITY COMPANY.

**TRENCH EXCAVATION SAFETY PROTECTION**

CONTRACTOR AND/OR CONTRACTOR'S INDEPENDENTLY RETAINED EMPLOYEE OR STRUCTURAL DESIGN/GEOTECHNICAL/SAFETY EQUIPMENT CONSULTANT, IF ANY, SHALL REVIEW THESE PLANS AND ANY AVAILABLE GEOTECHNICAL INFORMATION AND THE ANTICIPATED INSTALLATION SITES WITHIN THE PROJECT WORK AREA IN ORDER TO IMPLEMENT CONTRACTOR'S TRENCH EXCAVATION SAFETY PROTECTION SYSTEMS, PROGRAMS AND/OR PROCEDURES FOR THE PROJECT DESCRIBED IN THE CONTRACT DOCUMENTS. THE CONTRACTOR'S IMPLEMENTATION OF THESE SYSTEMS, PROGRAMS AND/OR PROCEDURES SHALL PROVIDE FOR ADEQUATE TRENCH EXCAVATION SAFETY PROTECTION THAT COMPLY WITH AS A MINIMUM, OSHA STANDARDS FOR TRENCH EXCAVATIONS. SPECIFICALLY, CONTRACTOR AND/OR CONTRACTOR'S INDEPENDENTLY RETAINED EMPLOYEE OR SAFETY CONSULTANT SHALL IMPLEMENT A TRENCH SAFETY PROGRAM IN ACCORDANCE WITH OSHA STANDARDS GOVERNING THE PRESENCE AND ACTIVITIES OF INDIVIDUALS WORKING IN AND AROUND TRENCH EXCAVATION.

**CAUTION:**

THE CONTRACTOR SHALL BE REQUIRED TO LOCATE ALL PUBLIC AND PRIVATE UTILITIES INCLUDING BUT NOT LIMITED TO WATER, SANITARY SEWER, STORM SEWER, CULVERTS, TELEPHONE AND FIBER OPTIC LINES, SITE LIGHTING ELECTRIC LINES, DUCTBANKS, LANDSCAPE IRRIGATION LINES, GAS LINES. THE CONTRACTOR SHALL CONTACT 1-800-DIG-TESS A MINIMUM OF 48 HOURS PRIOR TO CONSTRUCTION. ANY DAMAGE TO EXISTING UTILITIES SHALL BE THE SOLE RESPONSIBILITY OF THE CONTRACTOR AND THE REPAIR SHALL BE AT THE SOLE EXPENSE OF THE CONTRACTOR. ANY UTILITY CONFLICTS THAT ARISE SHALL BE COMMUNICATED TO THE ENGINEER IMMEDIATELY AND PRIOR TO CONSTRUCTION.

**NOTE:**

1. SAWS SHALL MACHINE CHLORINATE NEW MAINS.
2. CONTRACTOR SHALL FURNISH A SET OF "AS-BUILT" DRAWINGS TO ENGINEER AT TIME OF FINAL INSPECTION.
3. CONTRACTOR SHALL FURNISH AND INSTALL JUMPER CONNECTIONS AS REQUIRED OR DIRECTED BY THE SAWS INSPECTOR.
4. UNLESS OTHERWISE NOTED, ALL 16-INCH AND 8-INCH PIPE SHALL BE AWWA C900 PVC CLASS 235 DR 18.
5. SAWS REQUIRES G.C.P.S. AND COUNTER PERMITS TO USE LEAD FREE (<0.25% LEAD) FIRE HYDRANTS.
6. THE CONTRACTOR SHALL BE RESPONSIBLE FOR MEETING 98% COMPACTION ON ALL TRENCH BACKFILL AND PAYING FOR THE TESTS TO BE PERFORMED BY A THIRD PARTY. COMPACTION TEST WILL BE DONE AT ONE LOCATION POINT RANDOMLY SELECTED OR AS DIRECTED BY THE SAWS INSPECTOR/TEST ADMINISTER. PER EACH 16-INCH LOOSE FINALIZED BY SAWS WITHOUT THIS REQUIREMENT BEING MET AND VERIFIED BY PROVIDING ALL NECESSARY DOCUMENTED TEST RESULTS.

**SAWS PRESSURE ZONE PZ 2 & PZ**

DEVELOPER'S NAME: DTLD, LLC  
DEVELOPER'S ADDRESS: 111 W SUNSET RD  
CITY: SAN ANTONIO STATE: TEXAS ZIP: 78209  
PHONE#: (210) 823-2316 FAX#: TOTAL ACREAGE: 19.69  
SAWS BLOCK MAP#: 182504/182502 TOTAL EDUS: -  
TOTAL LINEAR FOOTAGE OF PIPE: 1,273 LF (12") PLAT NO.: 22-11800295  
NUMBER OF LOTS: SAWS JOB#: 22-1020

**RED & BLACK**  
ENGINEERING GROUP

PHONE: (210) 515-4833  
1400 W. LUTHER AVE. SUITE 111  
SAN ANTONIO, TEXAS 78202  
WWW.REDBLACKSG.COM  
TBE F-18934



PROJECT NUMBER:

SCALE:  
AS SHOWN

DESIGNED BY:

DRAWN BY:

CHECKED BY:

DATE:

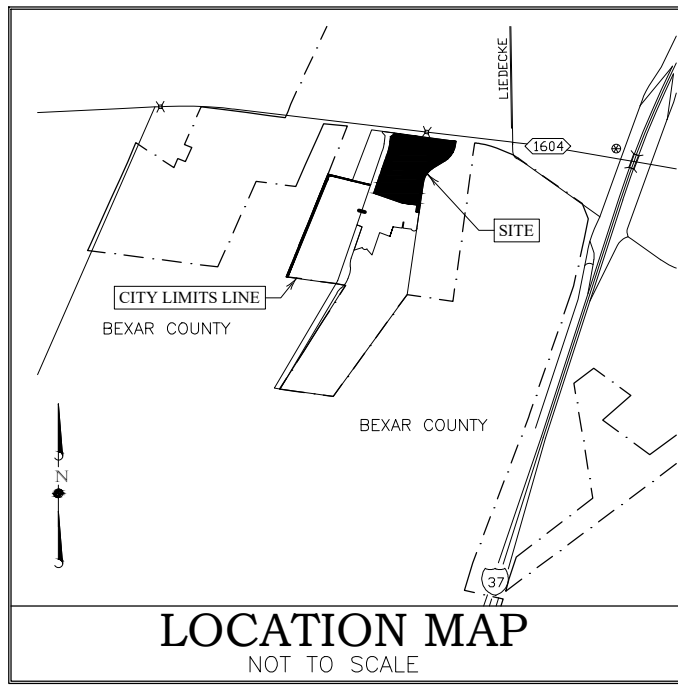
DTLD, LLC  
2010 WEST KINGS HIGHWAY  
SAN ANTONIO, TEXAS 78201

WATER OVERALL PLAN

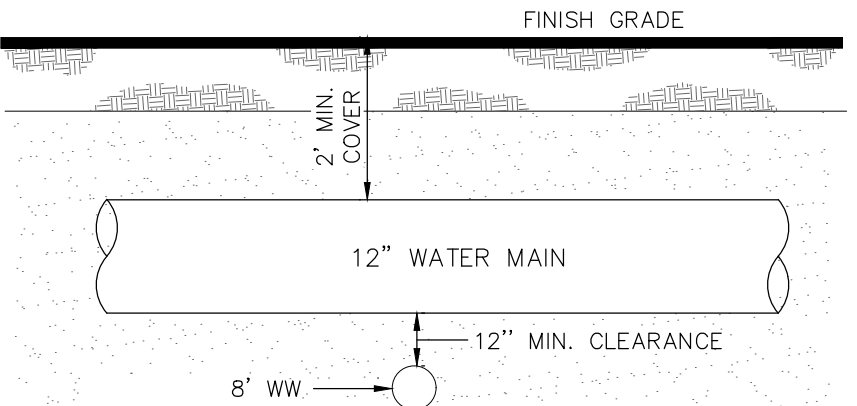
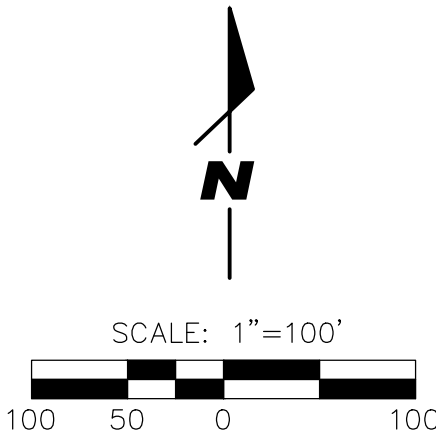
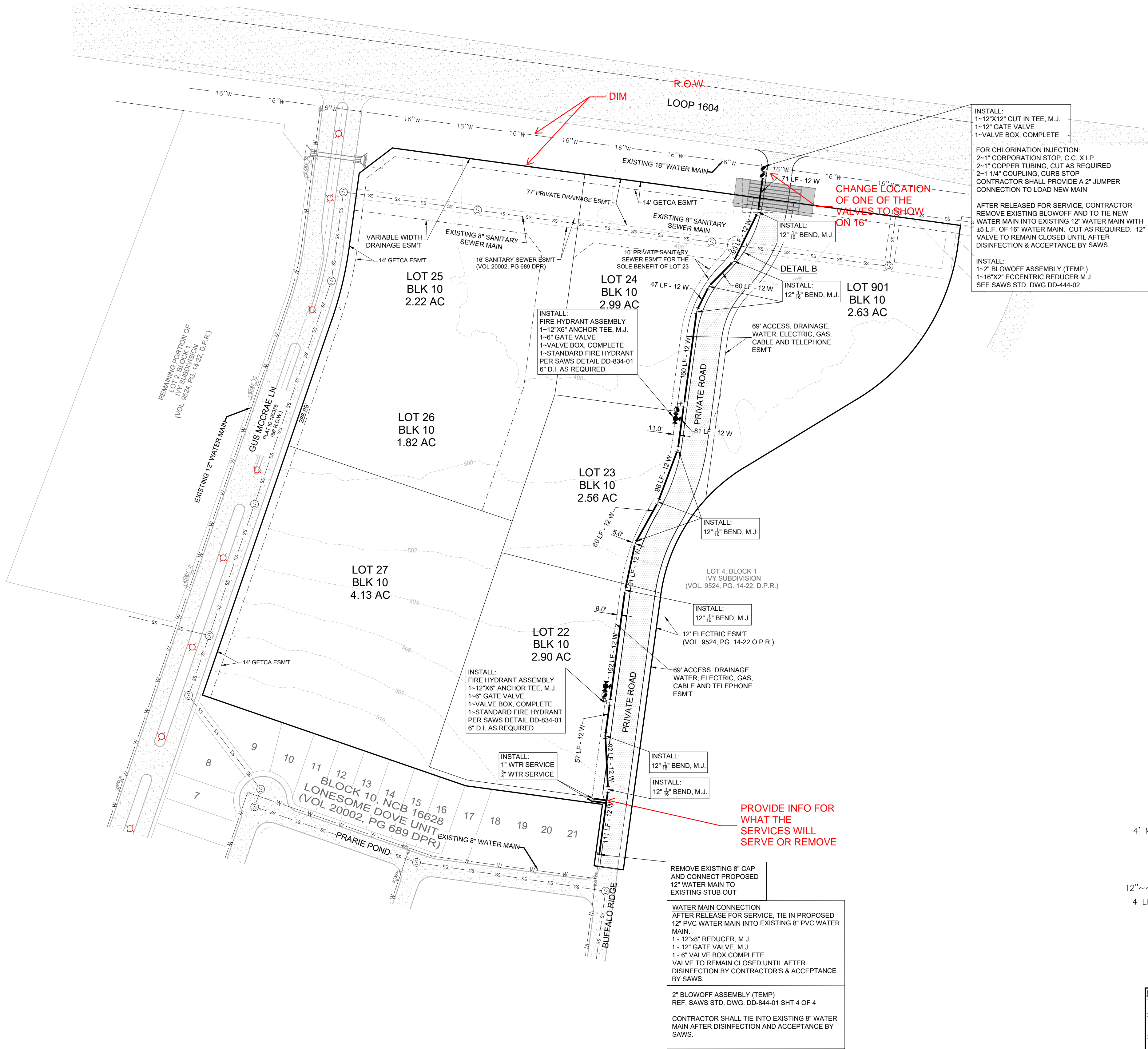
LONESOME DOVE - COMM UNIT 2  
SAN ANTONIO, TEXAS

SHEET  
C2.1

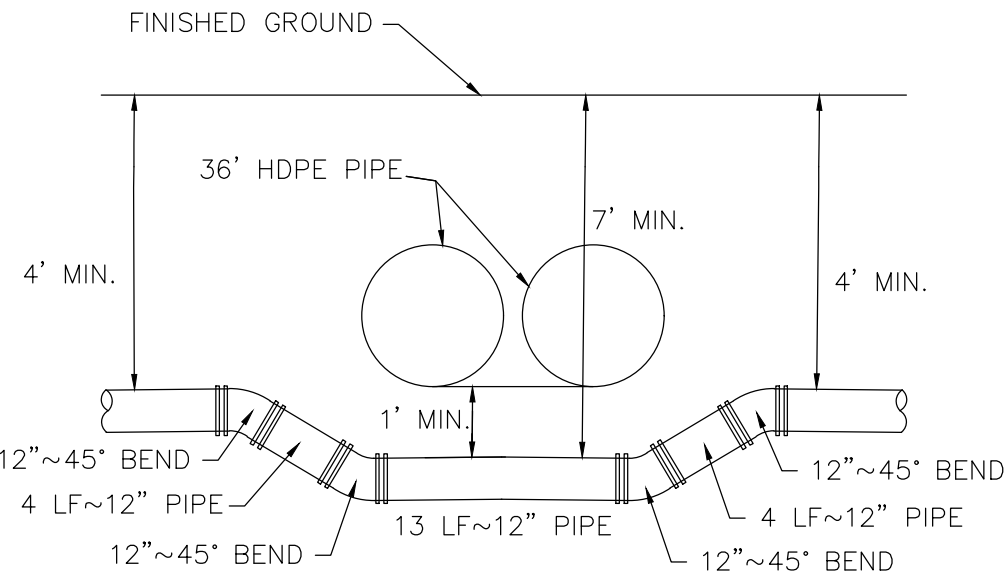




PLAT NO. 22-11800295



UTILITY CROSSING DETAIL "B"



CROSSING DETAIL "A"

- NOTE:**
- SAWS SHALL MACHINE CHLORINATE NEW MAINS.
  - CONTRACTOR SHALL FURNISH A SET OF "AS-BUILT" DRAWINGS TO ENGINEER AT TIME OF FINAL INSPECTION.
  - CONTRACTOR SHALL FURNISH AND INSTALL JUMPER CONNECTIONS AS REQUIRED OR DIRECTED BY THE SAWS INSPECTOR.
  - UNLESS OTHERWISE NOTED, ALL 16-INCH AND 8-INCH PIPE SHALL BE AWWA C900 PVC CLASS 235 OR 18.
  - SAWS REQUIRES G.C.P.S. AND COUNTER PERMITS TO USE LEAD FREE (<0.25% LEAD) FIRE HYDRANTS.
  - THE CONTRACTOR SHALL BE RESPONSIBLE FOR MEETING 98% COMPACTION ON ALL TRENCH BACKFILL AND PAYING FOR THE TESTS TO BE PERFORMED BY A THIRD PARTY. COMPACTION TEST WILL BE DONE AT ONE LOCATION POINT RANDOMLY SELECTED OR AS DIRECTED BY THE SAWS INSPECTOR/TEST ADMINISTRATOR. PER EACH 16-INCH LOOSE FINALIZED BY SAWS WITHOUT THIS REQUIREMENT BEING MET AND VERIFIED BY PROVIDING ALL NECESSARY DOCUMENTED TEST RESULTS.

**SAWS PRESSURE ZONE PZ 2 & PZ**

**DEVELOPER'S NAME:** DTLD, LLC  
**DEVELOPER'S ADDRESS:** 111 W SUNSET RD  
**CITY:** SAN ANTONIO **STATE:** TEXAS **ZIP:** 78209  
**PHONE#:** (210) 823-2316 **FAX#:** **TOTAL ACREAGE:** 19.69  
**SAWS BLOCK MAP#:** 182504/182502 **TOTAL EDUS:** -  
**TOTAL LINEAR FOOTAGE OF PIPE:** 1,273 LF (12") **PLAT NO.:** 22-11800295  
**NUMBER OF LOTS:** **SAWS JOB#:** 22-1020

**NOTE:**  
CONTRACTOR TO LOCATE AND FIELD VERIFY ALL EXISTING UTILITIES INCLUDING, BUT NOT LIMITED TO, WATER LINES, GAS LINES, SEWER LINES AND ELECTRIC LINES.

**CAUTION:**

THE CONTRACTOR SHALL EXERCISE EXTREME CARE WHEN WORKING UNDER HIGH VOLTAGE TRANSMISSION LINES. A WORKING HEIGHT OF 30 FEET FROM GROUND ELEVATION WILL BE OBSERVED WHEN WORKING UNDER HIGH VOLTAGE LINES. THE CONTRACTOR SHALL COORDINATE WITH THE UTILITY COMPANY.

**TRENCH EXCAVATION SAFETY PROTECTION**

CONTRACTOR AND/OR CONTRACTORS INDEPENDENTLY RETAINED EMPLOYEE OR STRUCTURAL DESIGN/GEOTECHNICAL/SAFETY EQUIPMENT CONSULTANT, IF ANY, SHALL REVIEW THESE PLANS AND ANY AVAILABLE GEOTECHNICAL INFORMATION AND THE ANTICIPATED INSTALLATION SITES WITHIN THE PROJECT WORK AREA IN ORDER TO IMPLEMENT CONTRACTORS TRENCH EXCAVATION SAFETY PROTECTION SYSTEMS, PROGRAMS AND/OR PROCEDURES FOR THE PROJECT DESCRIBED IN THE CONTRACT DOCUMENTS. THE CONTRACTORS IMPLEMENTATION OF THESE SYSTEMS, PROGRAMS AND/OR PROCEDURES SHALL PROVIDE FOR ADEQUATE TRENCH EXCAVATION SAFETY PROTECTION THAT COMPLY WITH AS A MINIMUM, OSHA STANDARDS FOR TRENCH EXCAVATIONS. SPECIFICALLY, CONTRACTOR AND/OR CONTRACTORS INDEPENDENTLY RETAINED EMPLOYEE OR SAFETY CONSULTANT SHALL IMPLEMENT A TRENCH SAFETY PROGRAM IN ACCORDANCE WITH OSHA STANDARDS GOVERNING THE PRESENCE AND ACTIVITIES OF INDIVIDUALS WORKING IN AND AROUND TRENCH EXCAVATION.

**CAUTION:**

THE CONTRACTOR SHALL BE REQUIRED TO LOCATE ALL PUBLIC AND PRIVATE UTILITIES INCLUDING BUT NOT LIMITED TO WATER, SANITARY SEWER, STORM SEWER, CULVERTS, TELEPHONE AND FIBER OPTIC LINES, SITE LIGHTING ELECTRIC LINES, DUCTBANKS, LANDSCAPE IRRIGATION LINES, GAS LINES. THE CONTRACTOR SHALL CONTACT 1-800-DIG-TESS A MINIMUM OF 48 HOURS PRIOR TO CONSTRUCTION. ANY DAMAGE TO EXISTING UTILITIES SHALL BE THE SOLE RESPONSIBILITY OF THE CONTRACTOR AND THE REPAIR SHALL BE AT THE SOLE EXPENSE OF THE CONTRACTOR. ANY UTILITY CONFLICTS THAT ARISE SHALL BE COMMUNICATED TO THE ENGINEER IMMEDIATELY AND PRIOR TO CONSTRUCTION.

**RED & BLACK**  
ENGINEERING GROUP

PHONE: (210) 515-4833  
1405 S. LUTHER AVE. SUITE 111  
SAN ANTONIO, TX 78203  
WWW.REDBLACKENG.COM  
TYPE F-18954



PROJECT NUMBER:

SCALE: AS SHOWN

DESIGNED BY:

DRAWN BY:

CHECKED BY:

DATE:

DTLD, LLC  
2010 WEST KINGS HIGHWAY  
SAN ANTONIO, TEXAS 78201

**WATER PLAN**  
LONESOME DOVE - COMMUNIT 2  
SAN ANTONIO, TEXAS

SHEET  
**C2.2**



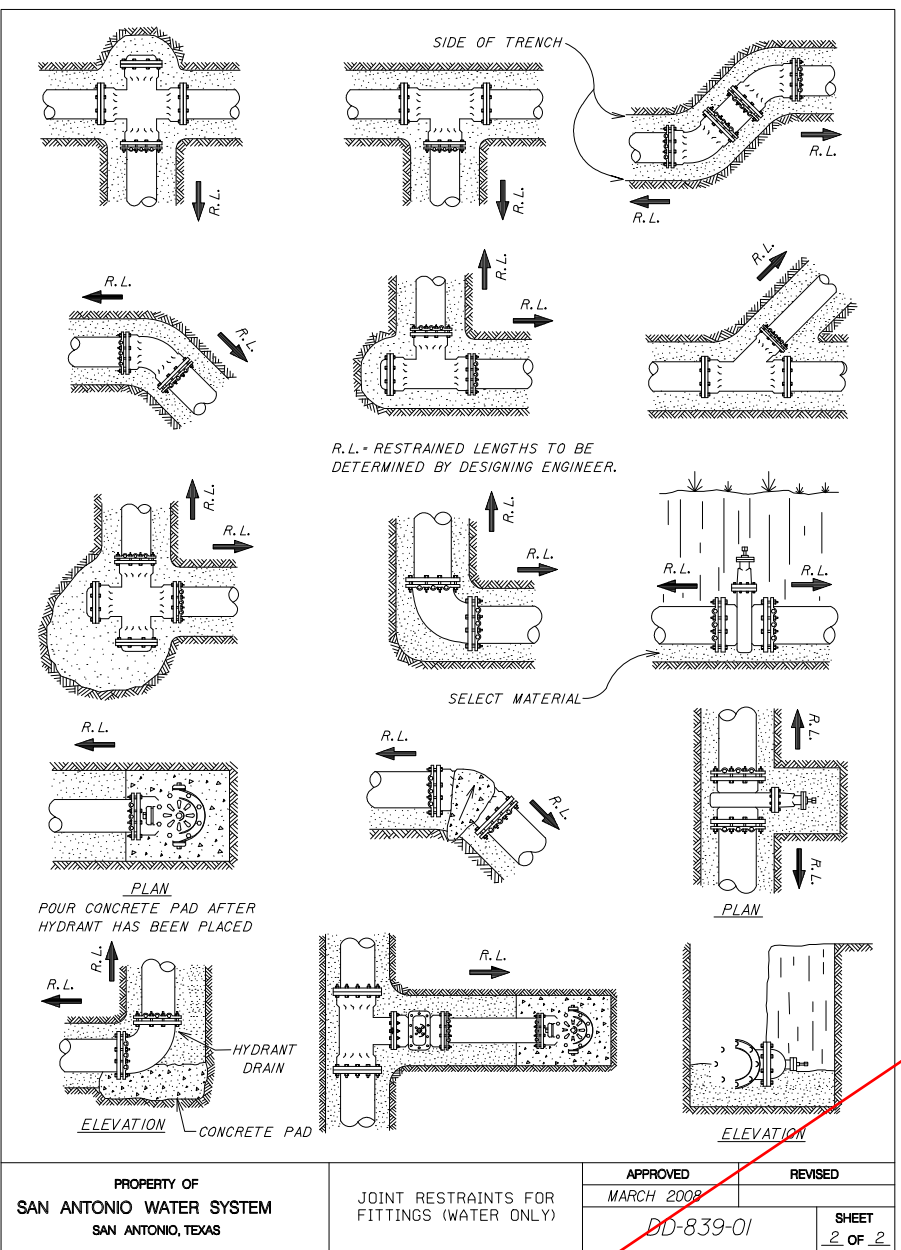
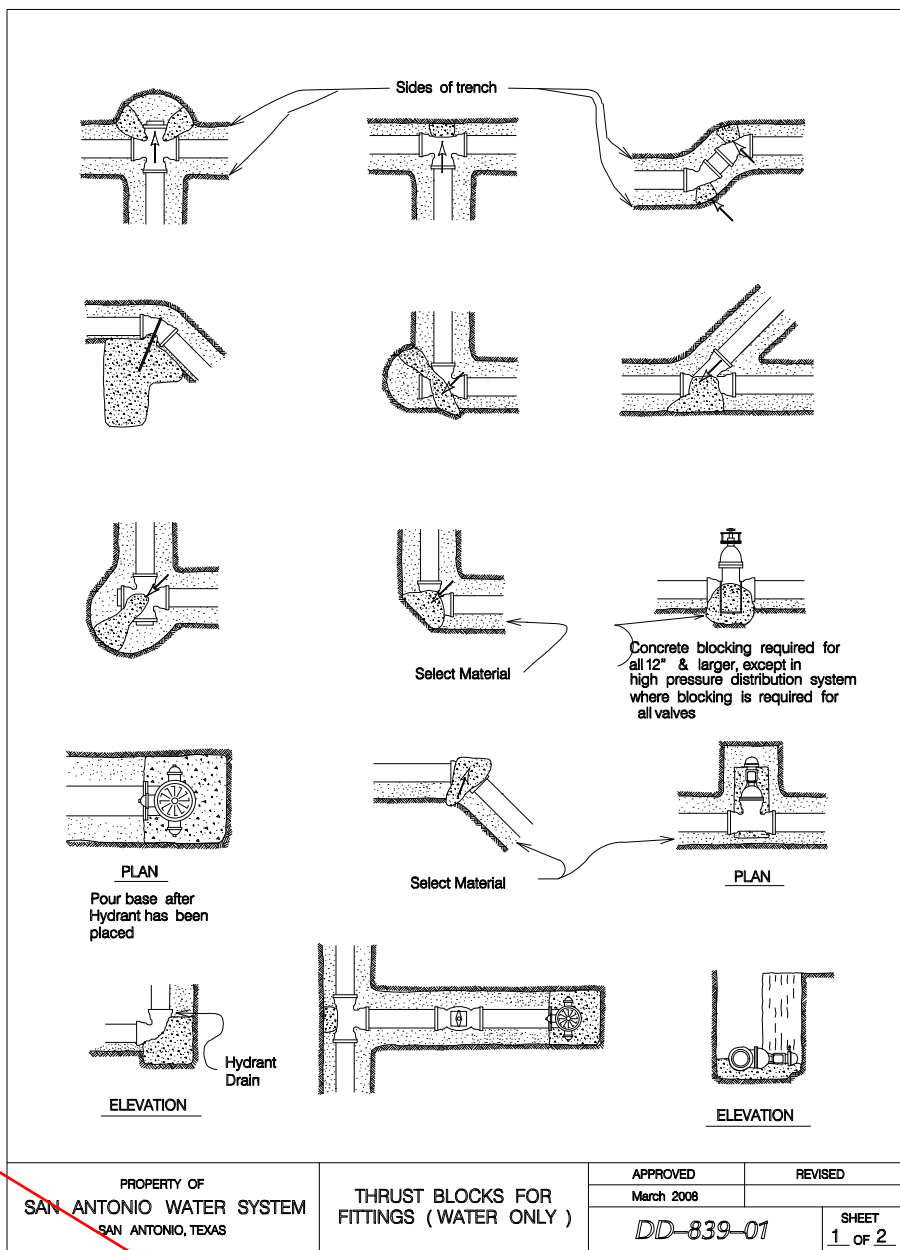
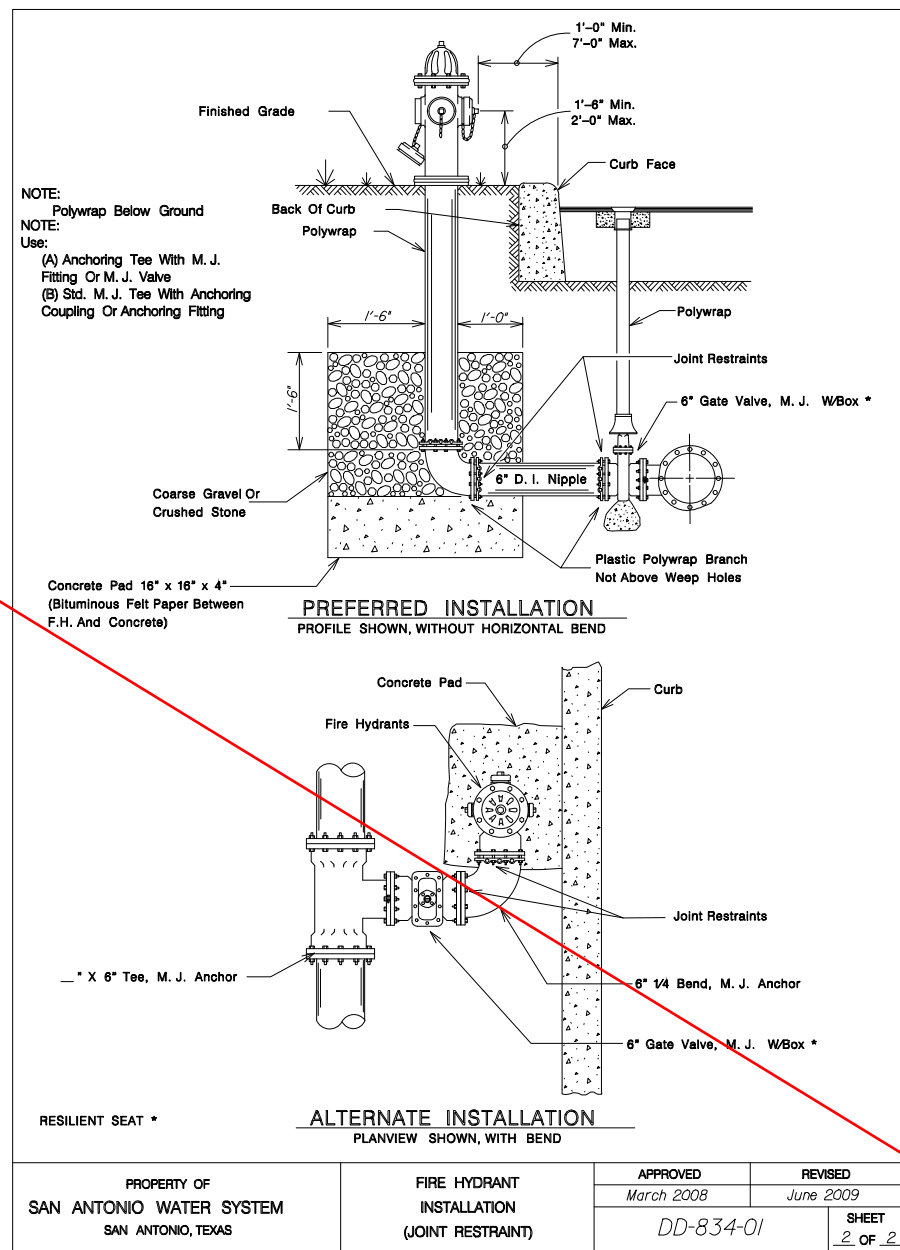
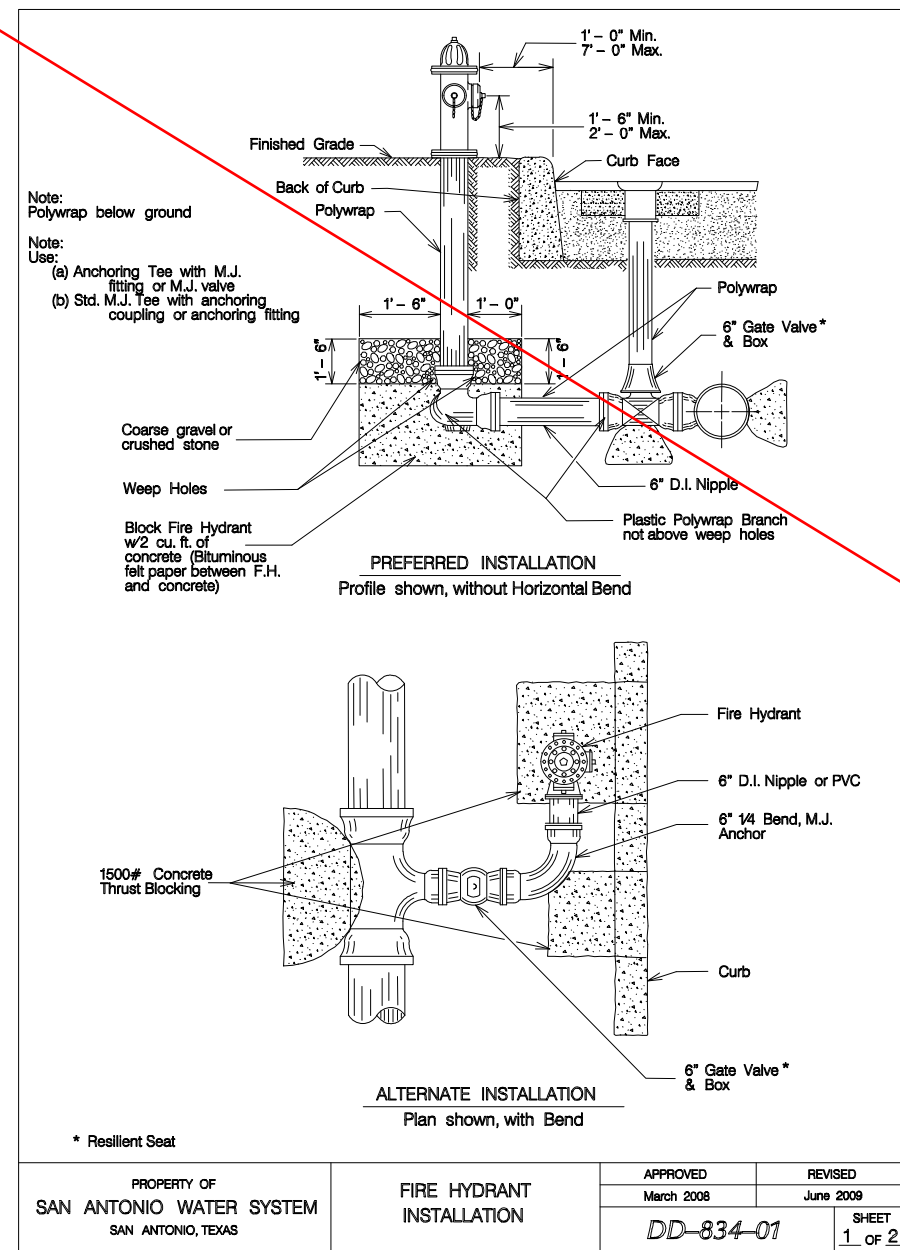


Diagram showing the preferred and alternate installation of a fire hydrant. The preferred installation shows a hydrant with a 6" D.I. Nipple, 6" Gate Valve, and 6" D.I. Nipple. The alternate installation shows a hydrant with a 6" D.I. Nipple, 6" Gate Valve, and 6" D.I. Nipple. The diagram includes a plan view and a profile view.

PROPERTY OF  
SAN ANTONIO WATER SYSTEM  
SAN ANTONIO, TEXAS

RESTRAINED LENGTHS  
FOR TEES

APPROVED  
March 2008

REVISED  
June 2008

DD-839-04

SHEET  
1 OF 2

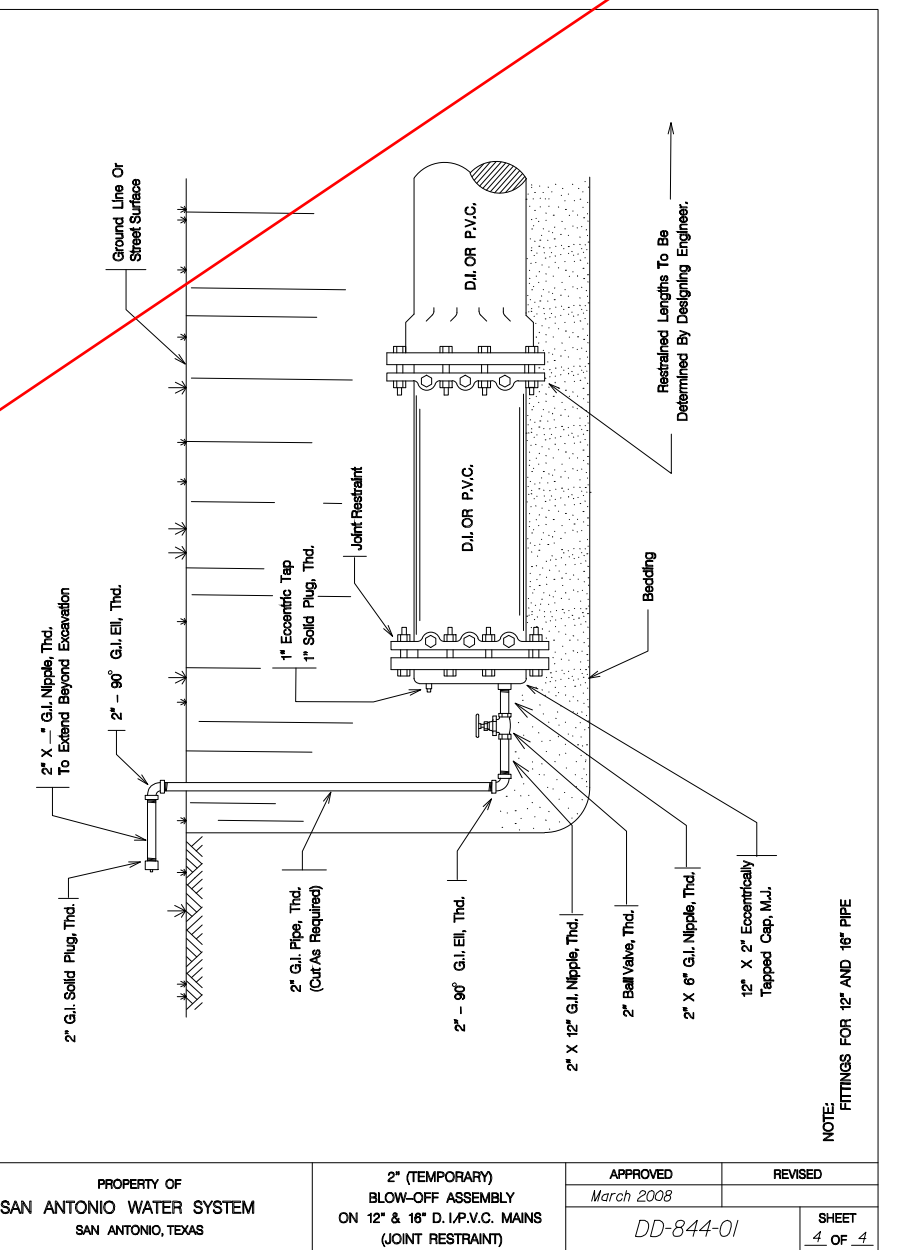


Diagram showing the preferred and alternate installation of a fire hydrant. The preferred installation shows a hydrant with a 6" D.I. Nipple, 6" Gate Valve, and 6" D.I. Nipple. The alternate installation shows a hydrant with a 6" D.I. Nipple, 6" Gate Valve, and 6" D.I. Nipple. The diagram includes a plan view and a profile view.

PROPERTY OF  
SAN ANTONIO WATER SYSTEM  
SAN ANTONIO, TEXAS

RESTRAINED LENGTHS  
FOR TEES

APPROVED  
March 2008

REVISED  
June 2008

DD-839-04

SHEET  
2 OF 2

Diagram showing the preferred and alternate installation of a fire hydrant. The preferred installation shows a hydrant with a 6" D.I. Nipple, 6" Gate Valve, and 6" D.I. Nipple. The alternate installation shows a hydrant with a 6" D.I. Nipple, 6" Gate Valve, and 6" D.I. Nipple. The diagram includes a plan view and a profile view.

PROPERTY OF  
SAN ANTONIO WATER SYSTEM  
SAN ANTONIO, TEXAS

RESTRAINED LENGTHS FOR  
VERTICAL OFFSETS

APPROVED  
March 2008

REVISED  
June 2008

DD-839-06

SHEET  
1 OF 1

Diagram showing the preferred and alternate installation of a fire hydrant. The preferred installation shows a hydrant with a 6" D.I. Nipple, 6" Gate Valve, and 6" D.I. Nipple. The alternate installation shows a hydrant with a 6" D.I. Nipple, 6" Gate Valve, and 6" D.I. Nipple. The diagram includes a plan view and a profile view.

PROPERTY OF  
SAN ANTONIO WATER SYSTEM  
SAN ANTONIO, TEXAS

RESTRAINED LENGTHS  
FOR REDUCERS

APPROVED  
March 2008

REVISED  
June 2008

DD-839-07

SHEET  
1 OF 1

Diagram showing the preferred and alternate installation of a fire hydrant. The preferred installation shows a hydrant with a 6" D.I. Nipple, 6" Gate Valve, and 6" D.I. Nipple. The alternate installation shows a hydrant with a 6" D.I. Nipple, 6" Gate Valve, and 6" D.I. Nipple. The diagram includes a plan view and a profile view.

PROPERTY OF  
SAN ANTONIO WATER SYSTEM  
SAN ANTONIO, TEXAS

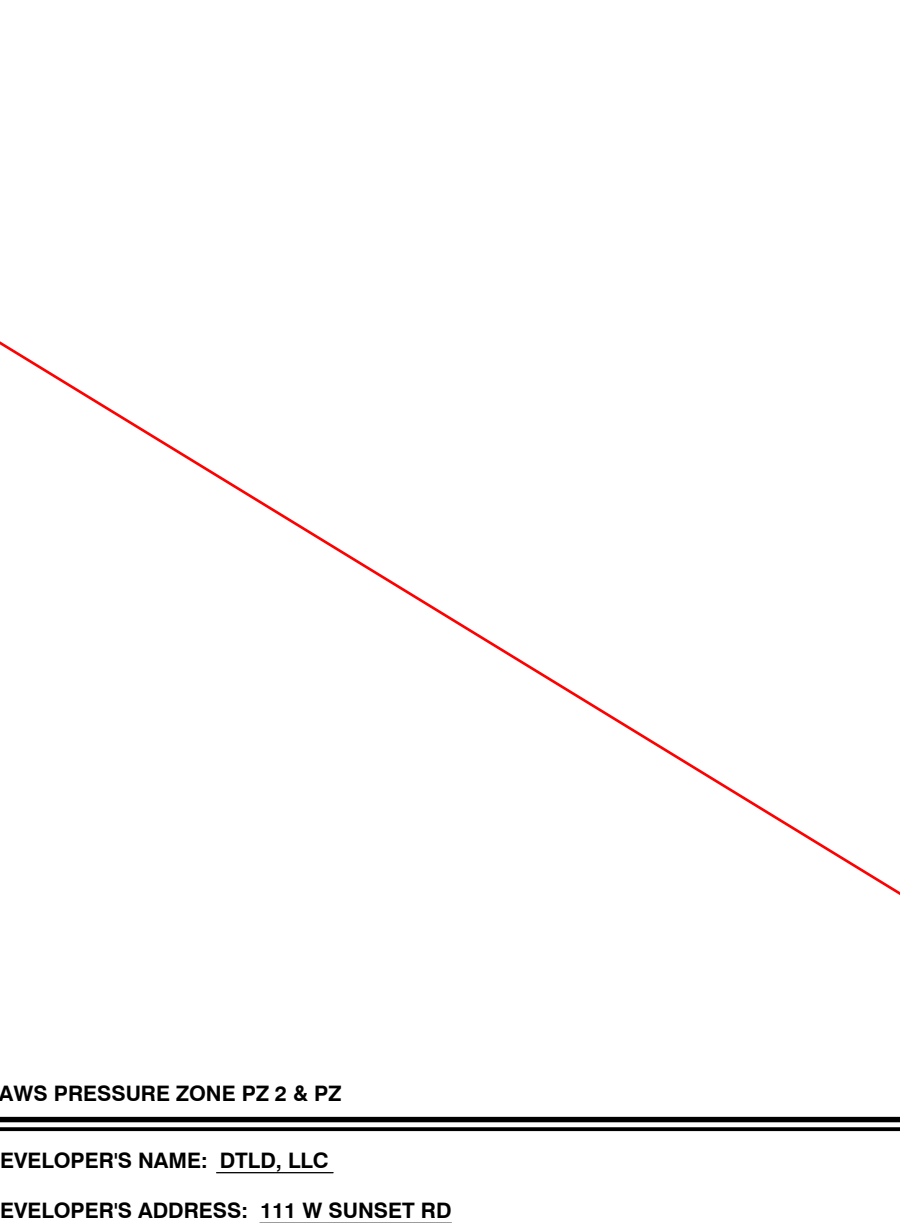
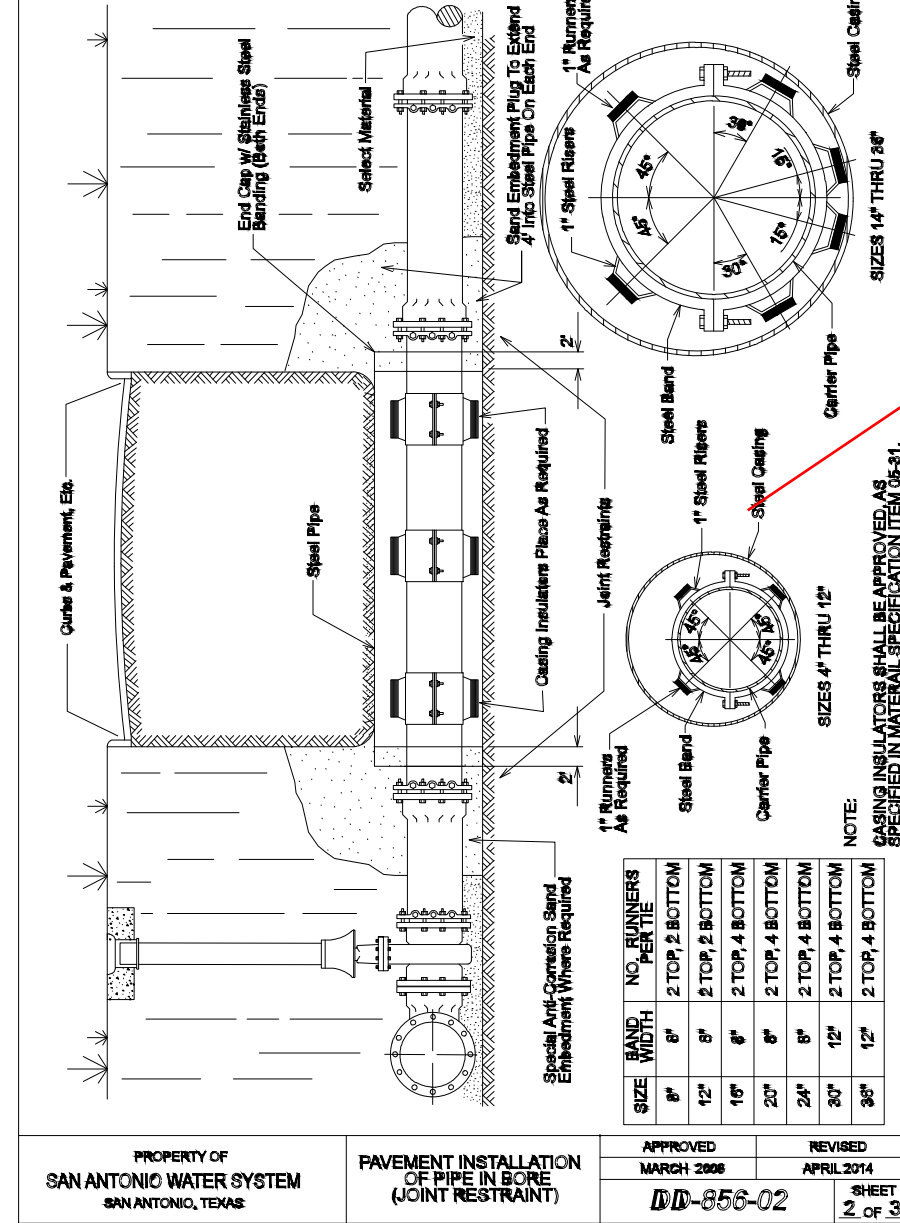
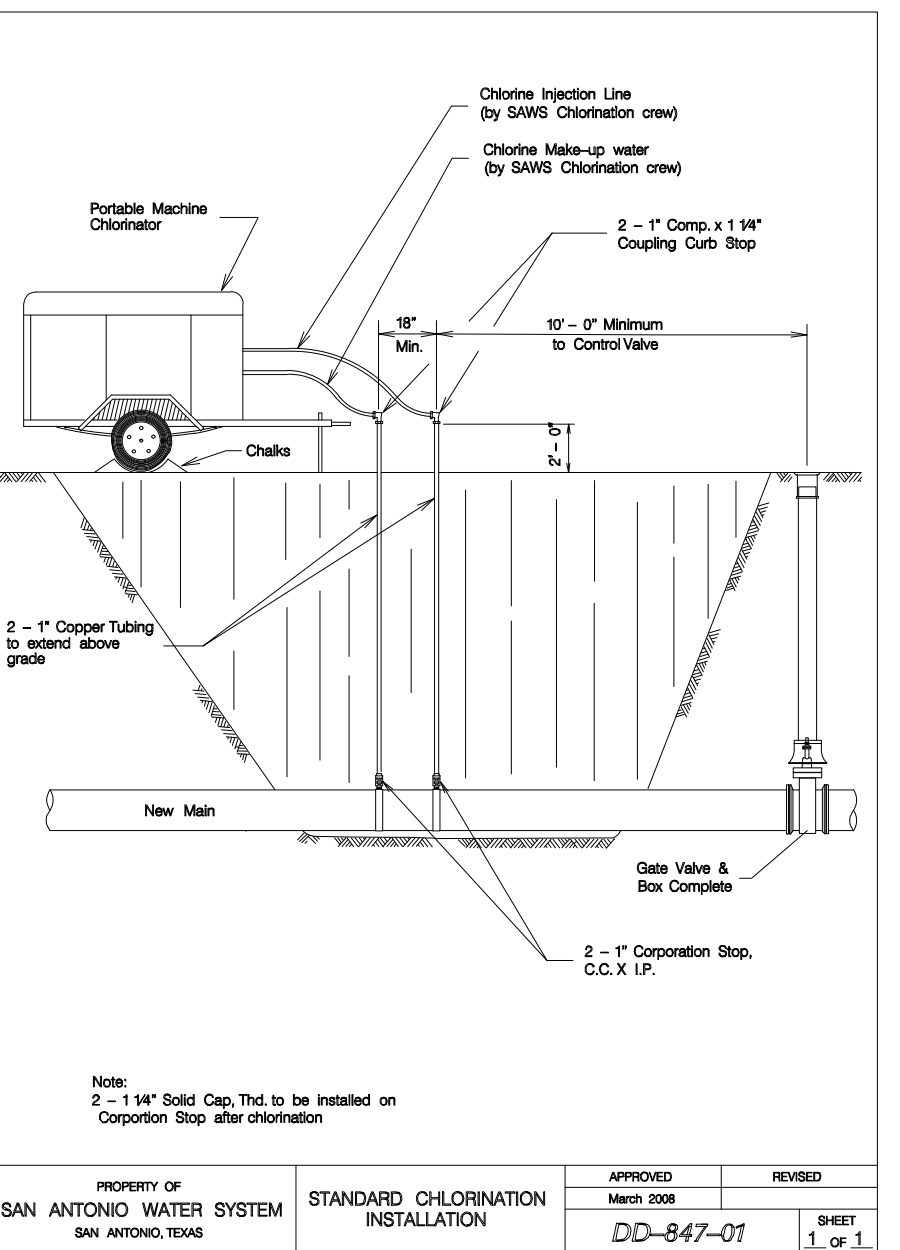
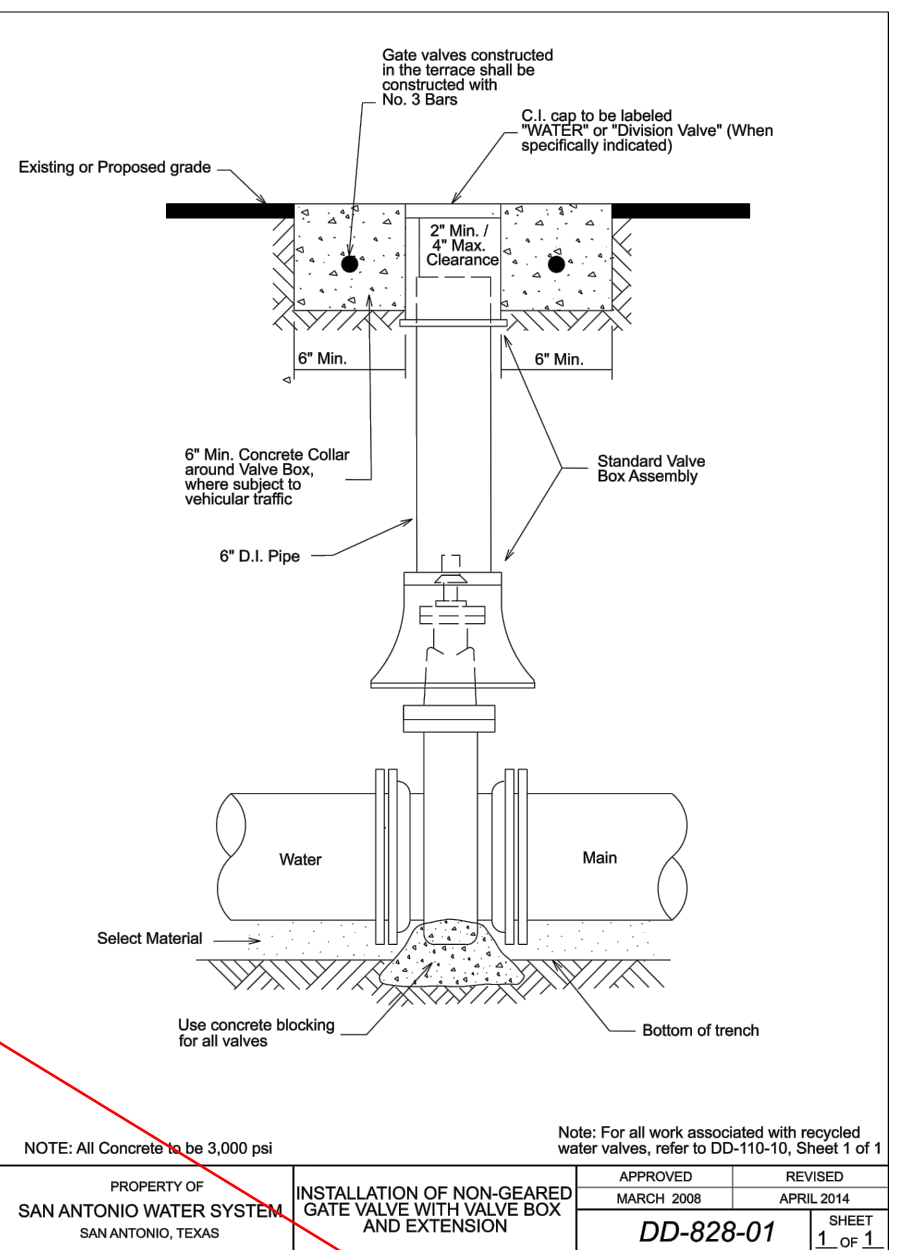
RESTRAINED LENGTHS  
FOR HORIZONTAL BENDS

APPROVED  
March 2008

REVISED  
June 2008

DD-839-08

SHEET  
1 OF 1



SAWS PRESSURE ZONE PZ 2 & PZ

DEVELOPER'S NAME: DTLD, LLC

DEVELOPER'S ADDRESS: 111 W SUNSET RD

CITY: SAN ANTONIO STATE: TEXAS ZIP: 78209

PHONE#: (210) 823-2316 FAX#: TOTAL ACRES: 19.69

SAWS BLOCK MAP#: 182504/182502 TOTAL EDUS: -

TOTAL LINEAR FOOTAGE OF PIPE: 1,273 LF (12") PLAT NO.: 22-11800295

NUMBER OF LOTS: SAWS JOB#: 22-1020

RED & BLACK  
ENGINEERING GROUP

PHONE: (210) 515-4833  
14800 LONESOME DOVE RD. 11  
SAN ANTONIO, TX 78203  
WWW.REDBLACKENG.COM  
TBE F-18594

PROJECT NUMBER:  
SCALE:  
AS SHOWN  
DESIGNED BY:  
DRAWN BY:  
CHECKED BY:  
DATE:

DTLD, LLC  
2010 WEST KINGS HIGHWAY  
SAN ANTONIO, TEXAS 78201

WATER DETAILS  
LONESOME DOVE - COMM UNIT 2  
SAN ANTONIO, TEXAS

SHEET  
C2.3