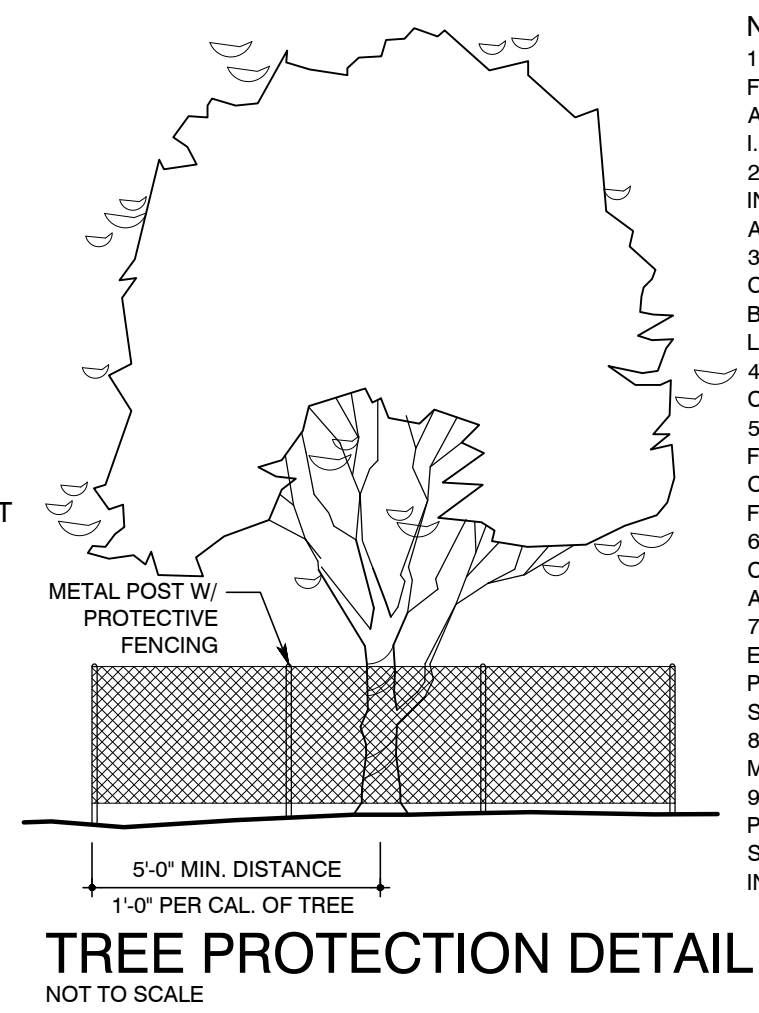


EXISTING PROTECTED TREE INVENTORY

January 18, 2024

LARGE SPECIES										SMALL SPECIES										PROTECTED CAL. INCHES EXEMPT	COMMENTS
TAG #	SPECIES	SIZE	SIGNIFICANT PRESERVED	SIGNIFICANT REMOVED	HERITAGE PRESERVED	HERITAGE REMOVED (3:1)	HERITAGE REMOVED (1:1)	PRESERVED	REMOVED	PRESERVED	REMOVED	PRESERVED	REMOVED	PRESERVED	REMOVED	PRESERVED	REMOVED	PRESERVED	REMOVED		
1002	MESQUITE	16	16																		
1003	MESQUITE	18	18																	21	Offsite/preserved
1004	MESQUITE	21																			
1005	HACKBERRY	12	12																		
1006	HACKBERRY	18	18																		
1007	HACKBERRY	18	18																		
1008	HACKBERRY	16	16																		
1009	HACKBERRY	17	17																		
1010	HACKBERRY	13	13																		
1011	HACKBERRY	13	13																		
1012	HACKBERRY	16	16																		
1013	HACKBERRY	13	13																		
1014	HACKBERRY	20	20																		
1015	HACKBERRY	26			26																
1016	HACKBERRY	26			26																
1017	HACKBERRY	12	12																		
1018	HACKBERRY	30																		30	In Decline/Preserved
1019	HACKBERRY	32			32																
1020	HACKBERRY	26																		26	Dead/Removed
1021	HACKBERRY	19	19																		
1022	HACKBERRY	16		16																	
1023	HACKBERRY	22																		22	In Decline/Removed
1024	HACKBERRY	18																		18	In Decline/Removed
1025	HACKBERRY	18																		18	Dead/Removed
1026	MESQUITE	17																		17	Dead/Removed
1027	HACKBERRY	17	17																		
1028	MESQUITE	21	21																		
1029	HACKBERRY	15																		15	In Decline/Removed
1030	ELM	6	6																		
1036	HACKBERRY	15		15																	
1037	HACKBERRY	10		10																	
1040	HACKBERRY	11																		11	R.O.W. Removed
1042	HACKBERRY	16																		16	Easement/Removed
1047	HACKBERRY	10																		10	Easement/Removed
1056	HACKBERRY	10																		10	Easement/Removed
1058	HACKBERRY	12																		12	Easement/Removed
1059	HACKBERRY	10																		10	Easement/Removed
1063	HACKBERRY	13																		13	Easement/Removed
1064	HACKBERRY	13																		13	Easement/Removed
1066	HACKBERRY	23																		23	Easement/Removed
1069	HACKBERRY	18																		18	Easement/Removed
1070	HACKBERRY	16																		16	Easement/Removed
1071	HACKBERRY	14																		14	Easement/Removed
1072	HACKBERRY	14																		14	Easement/Removed
1073	HACKBERRY	14																		14	Easement/Removed
1074	HACKBERRY	11																		11	Easement/Removed
1075	HACKBERRY	12																		12	Easement/Removed
1076	HACKBERRY	11																		11	Easement/Removed
1077	HACKBERRY	13																		13	Easement/Removed
1079	HACKBERRY	10																		10	Easement/Removed
1081	HACKBERRY	10																		10	Easement/Removed
1082	HACKBERRY	11																		11	Easement/Removed
1083	MULBERRY	41																		41	Non-Native/Removed
1084	HACKBERRY	13																		13	Easement/Removed
1086	HACKBERRY	13																		13	Easement/Removed
1087	HACKBERRY	11																		11	Easement/Removed
1088	HACKBERRY	14																		14	Easement/Removed
1090	HACKBERRY	10																		10	Easement/Removed
1091	HACKBERRY	22																		22	Easement/Removed
1092	HACKBERRY	16																		16	Easement/Removed
1093	HACKBERRY	14																		14	Easement/Removed
1094	HACKBERRY	13																		13	Easement/Removed
1095	HACKBERRY	12																		12	R.O.W. Removed
1096	HACKBERRY	12																		12	R.O.W. Removed
1097	HACKBERRY	13																		13	Easement/Removed
1101	MESQUITE	10																		10	Easement/Removed
1102	MESQUITE	10																		10	Easement/Removed
1103	MESQUITE	10																		10	Easement/Removed
1105	HACKBERRY	12																		12	Dead/Removed
1106	MESQUITE	14																		14	Offsite/Preserved
1107	HACKBERRY	10	10																		
1108	HACKBERRY	11	11																		
1109	LIVE OAK	45																		45	R.O.W. Removed
1110	LIVE OAK	54																		54	R.O.W. Removed
1147	HACKBERRY	10	10																		
TOTALS		1219	296	41	84	0	0	0	0	0	0	0	0	0	0	0	0	0	0	788	



TREE PROTECTION DETAIL
NOT TO SCALE

TREE MITIGATION SUMMARY	438 CAL. IN.
MITIGATION REQUIRED PER R.O.W. TREE INVENTORY:	
TOTAL MITIGATION PROVIDED:	
1. PARTIAL CREDIT PROPOSED TREES (UNITS 1, 2, 3, & 4)	0 CAL. IN
(2) 1.5" TREES PER LOT X 488 LOTS (LESS 1.5" EA.)	
2. FULL-CREDIT PROPOSED TREES (UNITS 1, 2, 3, & 4)	732 CAL. IN
(1) 1.5" TREES PER LOT X 488 LOTS (LESS 1.5" EA.)	
TOTAL MITIGATION PROVIDED:	732 CAL. IN.
TREE CANOPY COMPLIANCE (UNIT 1)	
UNIT 1 SITE AREA:	1,193,544 SF (27.40 Ac)
UNIT 1 SINGLE FAMILY SITE AREA:	964,418 SF (22.14 Ac)
X 38% = TREE CANOPY REQUIRED	366,479 SF
UNIT 1 MULTIFAMILY:	
X 25% = TREE CANOPY REQUIRED	57,282 SF
TOTAL TREE CANOPY REQUIRED:	423,761 SF
TREE CANOPY PROVIDED	
1. NEW TREES - (3) PER SINGLE FAMILY LOT, 113 LOTS TOTAL	
A. (2) SHUMARD OAKS, BUR OAKS OR MEXICAN SYCAMORES	366,120 SF
PER LOT @ 1200 SF X 90% X 150% (ENERGY CONSERVATION CREDIT USED)	
B. (1) LIVE OAK OR CEDAR ELM PER LOT @ 875 SF X 90%	88,987.5 SF
2. NEW TREES - (0) PER MULTIFAMILY LOT, 40 LOTS TOTAL:	0 SF
TOTAL TREE CANOPY PROVIDED:	455,107.5 SF (38.1%)
TREE CANOPY COMPLIANCE (UNIT 1A)	
UNIT 1A SITE AREA:	158,994 SF (3.65 Ac)
X 25% = TREE CANOPY REQUIRED	39,749 SF
TREE CANOPY PROVIDED	
1. NEW TREES - (STREET LF x 2) / 50 FT = (1546 x 2) / 50	
= TOTAL TREES REQUIRED:	62
TOTAL TREES PROVIDED:	62
A. 90% CREDIT NEW TREES	
(10) MEXICAN SYCAMORES @ 1200 SF x 90%:	17,280 SF
(10) SHUMARD OAKS @ 1200 SF x 90%:	17,280 SF
(15) LIVE OAKS @ 875 SF x 90%:	11,812.5 SF
(15) CEDAR ELMS @ 875 SF x 90%:	11,812.5 SF
TOTAL TREE CANOPY PROVIDED:	58,185 SF (36.6%)

2

NOT TO SCALE

NOT TO SCALE

NOT TO SCALE

NOT TO SCALE

NOT TO SCALE

NOT TO SCALE

NOT TO SCALE

NOT TO SCALE

NOT TO SCALE

NOT TO SCALE

NOT TO SCALE

NOT TO SCALE

NOT TO SCALE

NOT TO SCALE

NOT TO SCALE

NOT TO SCALE

NOT TO SCALE

NOT TO SCALE

NOT TO SCALE

NOT TO SCALE

NOT TO SCALE

NOT TO SCALE

NOT TO SCALE

NOT TO SCALE

NOT TO SCALE

NOT TO SCALE

NOT TO SCALE

NOT TO SCALE

NOT TO SCALE

NOT TO SCALE

NOT TO SCALE

NOT TO SCALE

NOT TO SCALE

NOT TO SCALE

NOT TO SCALE

NOT TO SCALE

NOT TO SCALE

NOT TO SCALE

NOT TO SCALE

NOT TO SCALE

NOT TO SCALE

NOT TO SCALE

NOT TO SCALE

NOT TO SCALE

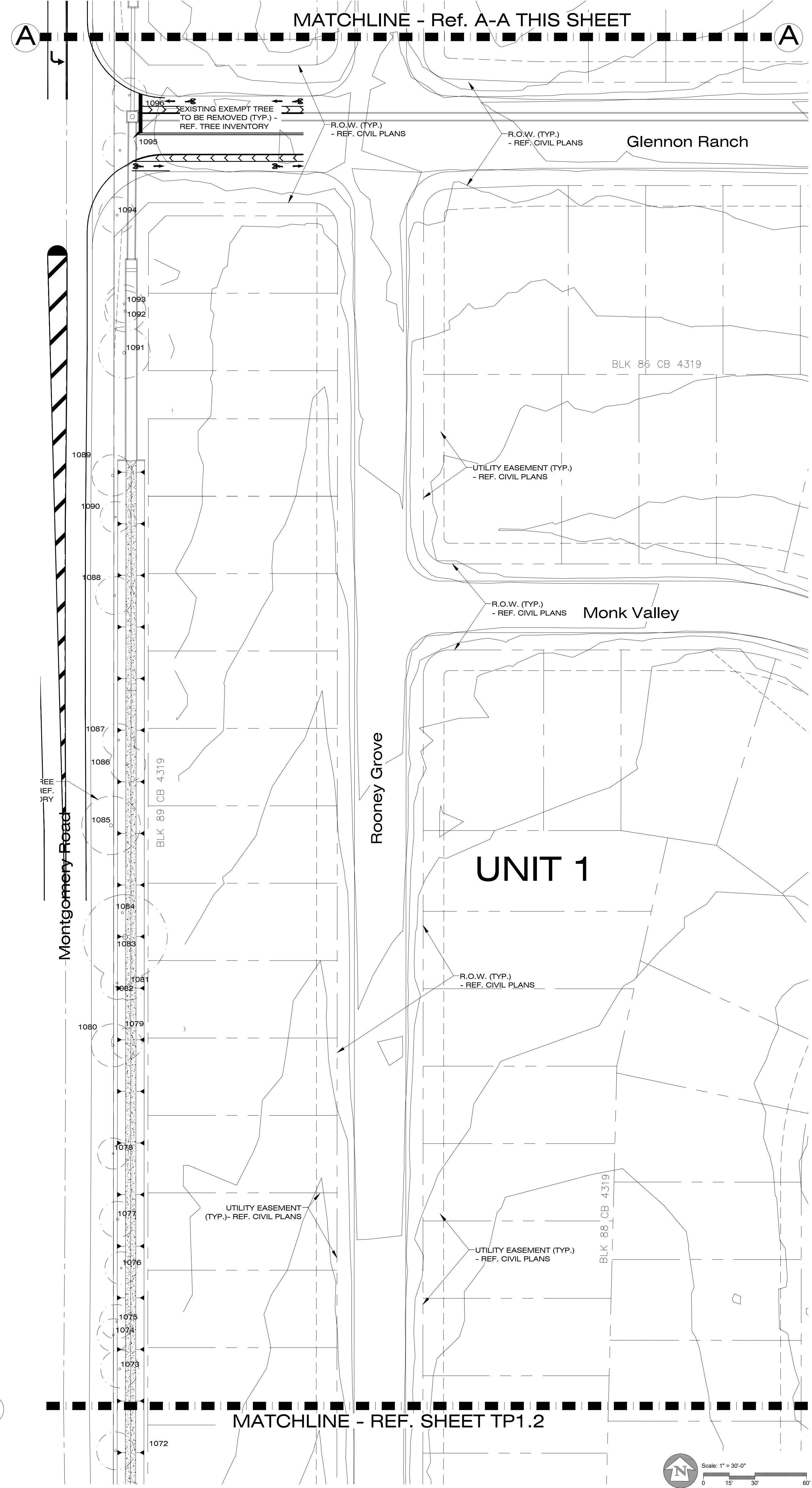
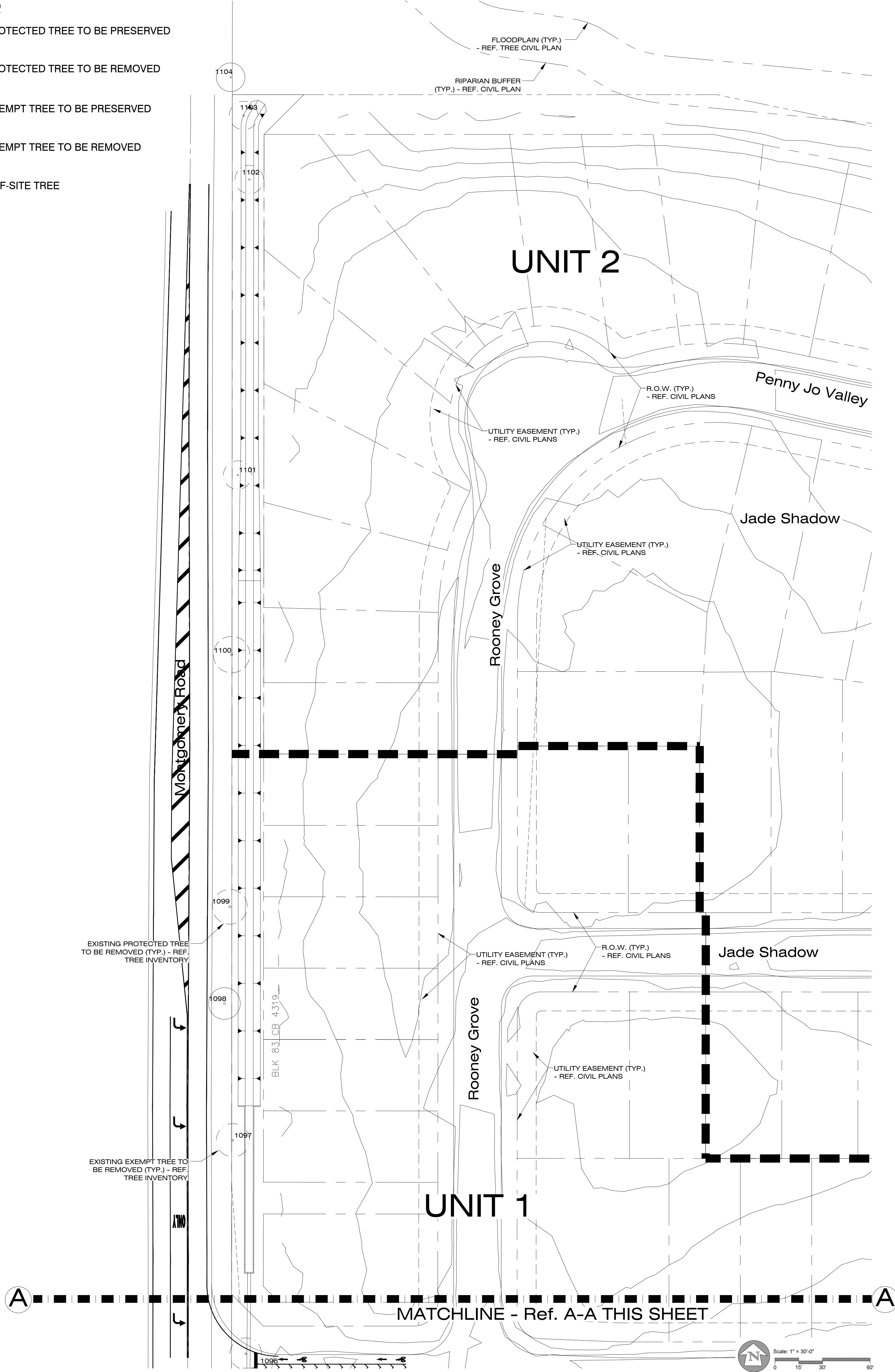
NOT TO SCALE

NOT TO SCALE

NOT TO SCALE

EXISTING TREE LEGEND

- 007 = EXISTING PROTECTED TREE TO BE PRESERVED
- 007 = EXISTING PROTECTED TREE TO BE REMOVED
- 007 = EXISTING EXEMPT TREE TO BE PRESERVED
- 007 = EXISTING EXEMPT TREE TO BE REMOVED
- 007 = EXISTING OFF-SITE TREE



H O R I Z O N
DESIGN AND DEVELOPMENT
PLANNING LANDSCAPE ARCHITECTURE
DEVELOPMENT CONSULTING
14607 San Pedro Ave., Suite 200
San Antonio, Texas 78232
210.631.8564 jrobbins@horizontdesign-na.com



12424
The user of this file agrees to
assume all responsibility for any
modifications to or use of this
drawing file that is inconsistent
with the requirements of the
Rules and Regulations of the
Texas Board of Architectural
Examiners. No person may
make any modifications to this
electronic drawing file without
the Landscape Architect's
express written permission.

OWNER
LGI HOMES

1450 Lake Robbins Drive, Suite 430
The Woodlands, TX 77380

PROJECT TITLE
Lucero at Luckey
Ranch Units 1 thru 4

U.S. Hwy. 90 West @ Luckey Ranch
San Antonio, Texas 78252

PROJECT NUMBER
2020-108
DRAWN BY
mc
CHECKED BY
jr

REVISIONS
NUMBER DATE DESCRIPTION
1 01/24/24 City Comments

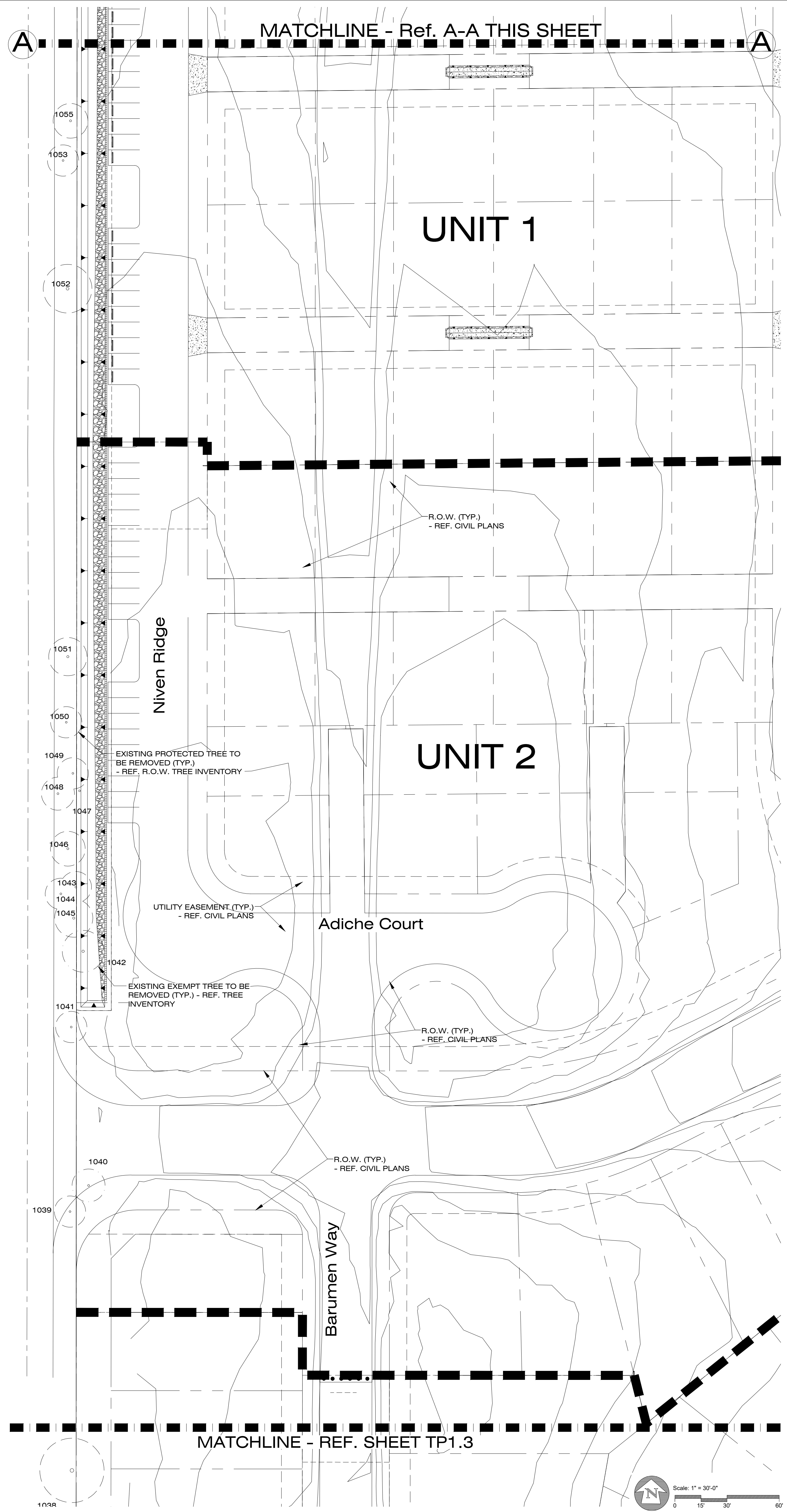
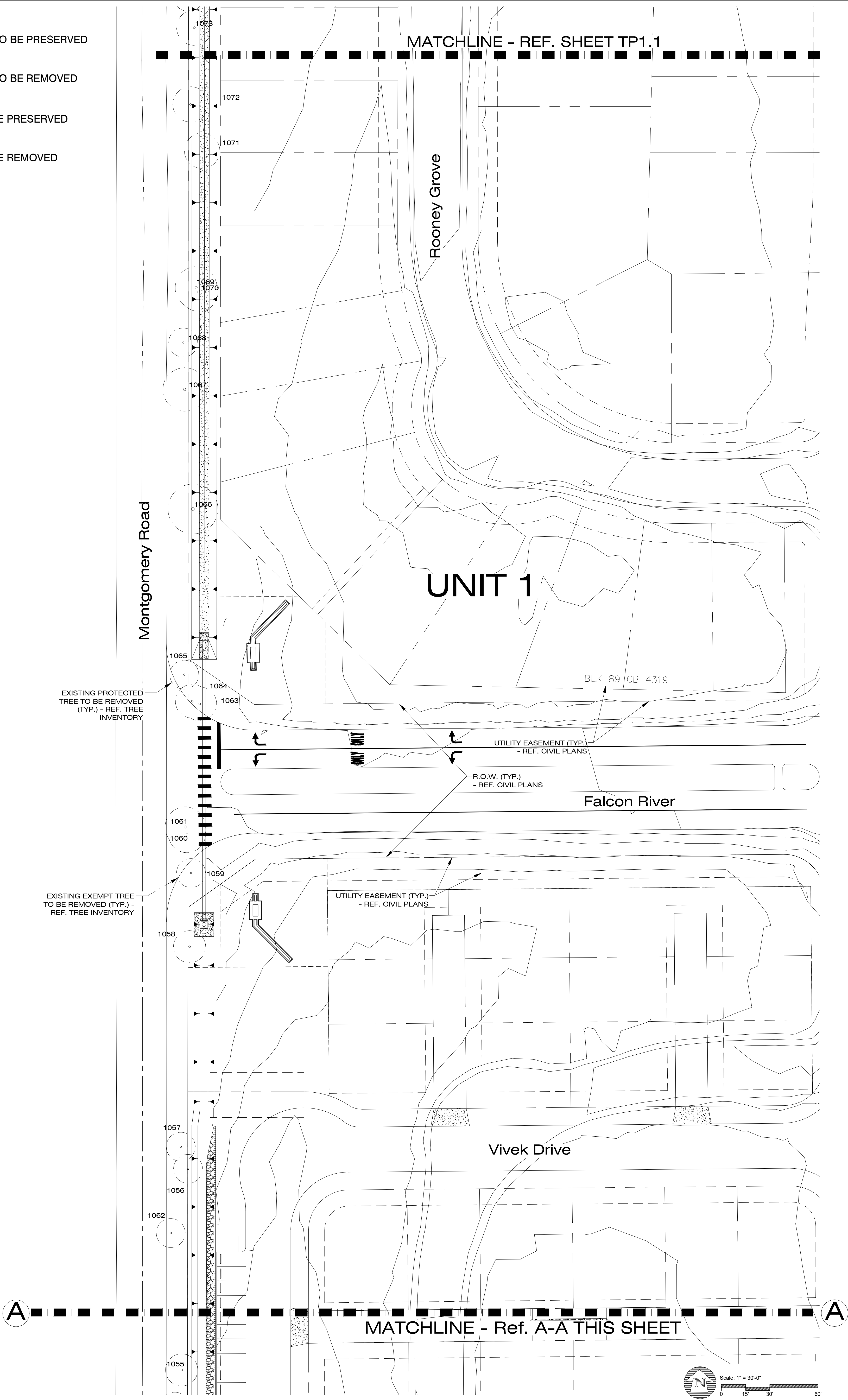
SHEET TITLE
ENLARGED
TREE
PRESERVATION
PLAN

DATE
October 27, 2023

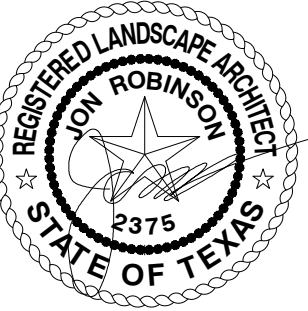
SHEET NUMBER
TP1.1

EXISTING TREE LEGEND

- 007 = EXISTING PROTECTED TREE TO BE PRESERVED
- 007 = EXISTING PROTECTED TREE TO BE REMOVED
- 007 = EXISTING EXEMPT TREE TO BE PRESERVED
- 007 = EXISTING EXEMPT TREE TO BE REMOVED
- 007 = EXISTING OFF-SITE TREE



H O R I Z O N
DESIGN AND DEVELOPMENT
PLANNING LANDSCAPE ARCHITECTURE
DEVELOPMENT CONSULTING
14607 San Pedro Ave., Suite 200
San Antonio, Texas 78233
210.831.8564 jrobinson@horizontdesign-sa.com



12424
The user of this file agrees to
assume all responsibility for any
modifications to or use of this
drawing file that is inconsistent
with the requirements of the
Rules and Regulations of the
Texas Board of Architectural
Examiners. No person may
make any modifications to this
electronic drawing file without
the Landscape Architect's
express written permission.

OWNER

LGI HOMES

1450 Lake Robbins Drive, Suite 430
The Woodlands, TX 77380

PROJECT TITLE

Lucero at Luckey
Ranch Units 1 thru 4

U.S. Hwy. 90 West @ Luckey Ranch
San Antonio, Texas 78252

PROJECT NUMBER

2020-108

DRAWN BY

mc

CHECKED BY

jr

REVISIONS

NUMBER	DATE	DESCRIPTION
1.	01/24/24	City Comments

SHEET TITLE

ENLARGED
TREE
PRESERVATION
PLAN

DATE

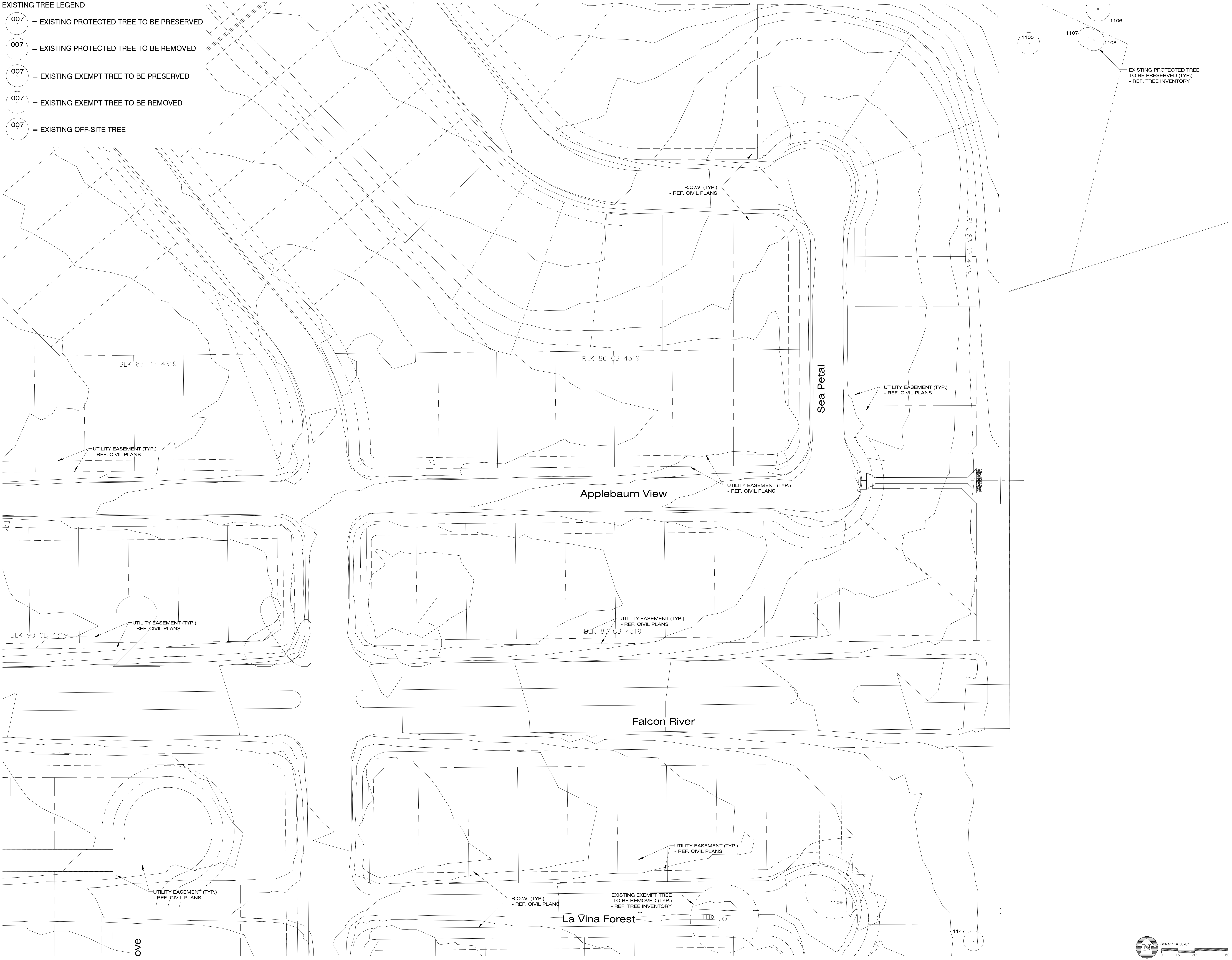
October 27, 2023

SHEET NUMBER

TP1.2

EXISTING TREE LEGEND

- 007 = EXISTING PROTECTED TREE TO BE PRESERVED
- 007 = EXISTING PROTECTED TREE TO BE REMOVED
- 007 = EXISTING EXEMPT TREE TO BE PRESERVED
- 007 = EXISTING EXEMPT TREE TO BE REMOVED
- 007 = EXISTING OFF-SITE TREE



H O R I Z O N
DESIGN AND DEVELOPMENT
PLANNING LANDSCAPE ARCHITECTURE
DEVELOPMENT CONSULTING
14607 San Pedro Ave., Suite 200
San Antonio, Texas 78232
210.831.8564 jrobbins@horizontdesign-sa.com



12424
The user of this file agrees to
assume all responsibility for any
modifications to or use of this
drawing file that is inconsistent
with the requirements of the
Rules and Regulations of the
Texas Board of Architectural
Examiners. No person may
make any modifications to this
electronic drawing file without
the Landscape Architect's
express written permission.

OWNER
LGI HOMES

1450 Lake Robbins Drive, Suite 430
The Woodlands, TX 77380

PROJECT TITLE
**Lucero at Luckey
Ranch Units 1 thru 4**

U.S. Hwy. 90 West @ Luckey Ranch
San Antonio, Texas 78252

PROJECT NUMBER
2020-108
DRAWN BY
mc
CHECKED BY
jr

REVISIONS
NUMBER DATE DESCRIPTION
1 01/24/24 City Comments

SHEET TITLE
**ENLARGED
TREE
PRESERVATION
PLAN**

DATE
October 27, 2023

SHEET NUMBER
TP1.4