

RESIDENTIAL UNIT MITIGATION CALCULATIONS

HERITAGE

TOTAL HERITAGE INCHES = 318"

TOTAL HERITAGE INCHES PRESERVED = 117.5" PRESERVED (36.9%)

TOTAL HERITAGE INCHES REMOVED = 318" TOTAL - 117.5" PRESERVED = 200.5" REMOVED

MITIGATION

LARGE SIGNIFICANT

TOTAL SIGNIFICANT INCHES = 387.5 1644

TOTAL SIGNIFICANT INCHES = 461.5" PRESERVED + 1570" REMOVED = 2031.5"

INCHES REQUIRED TO BE SAVED (SIGNIFICANT) = 35% REQ. PRESERVATION x 2031.5" = 711"

PERCENTAGE PRESERVED (LG. SIGNIFICANT) = 461.5" PRESERVED / 2031.5" TOTAL = 22.7%

MITIGATION

SMALL SIGNIFICANT

TOTAL SIGNIFICANT INCHES = 79" PRESERVED + 517.5" REMOVED = 596.5"

INCHES REQUIRED TO BE SAVED (SIGNIFICANT) = 35% REQ. PRESERVATION x 596.5" = 209"

PERCENTAGE PRESERVED (SM. SIGNIFICANT) = 79" PRESERVED / 517.5" TOTAL = 15.3%

MITIGATION

MITIGATION = 209" REQUIRED - 79" PRESERVED = 130" MITIGATION REQUIRED

RIPARIAN BUFFER

HERITAGES INCHES REMOVED = 0"

TOTAL SIGNIFICANT INCHES = 12" PRESERVED + 0" REMOVED = 12" TOTAL SIGNIFICANT

INCHES REQUIRED TO BE SAVED (SIGNIFICANT) = 80% REQ. PRESERVATION x 12" = 9.5"

PERCENTAGE PRESERVED (SIGNIFICANT) = 12" PRESERVED / 12" TOTAL = 100.0%

PROPOSED TREE CANOPY:

TOTAL PROJECT AREA (OUTSIDE OF FLOODPLAIN) = 48.21 ACRES RESIDENTIAL

PROPOSED TREE CANOPY PLANTED FROM UDC TREES = 234 LOTS @ 2 LARGE TREES/LOT = 468 TREES @ 1080 SQUARE FEET OF SHADE AREA/TREE = 11.60 ACRES x 1.5" = 17.40 ACRES

PROPOSED TREE CANOPY PLANTED FROM ADDITIONAL TREES = 234 LOTS @ 2 LARGE TREES/LOT = 468 TREES @ 1080 SQUARE FEET OF SHADE AREA/TREE = 11.60 ACRES

EXISTING TREE CANOPY PRESERVED = 33 MEDIUM SHADE TREES @ 875 SQUARE FEET OF CANOPY PER TREE + 16 SMALL SHADE TREES @ 275 SQUARE FEET OF CANOPY PER TREE = 0.76 ACRES

PRESERVED CANOPY + PROPOSED CANOPY = 17.40 + 11.60 + 0.76 = 29.76 ACRES

PROPOSED TREE CANOPY COVERAGE = 29.76/48.21 ACRES = 61.7% (38% REQUIRED)

FEMA FLOODPLAIN

HERITAGE INCHES REMOVED = 0"

TOTAL SIGNIFICANT INCHES = 802.5" PRESERVED + 0" REMOVED = 802.5"

INCHES REQUIRED TO BE SAVED (SIGNIFICANT) = 80% REQ. PRESERVATION x 802.5" = 642"

PERCENTAGE PRESERVED (SIGNIFICANT) = 802.5" PRESERVED / 802.5" TOTAL = 100.0%

MITIGATION

TOTAL MITIGATION REQUIRED = 249.5" HERITAGE + 249.5" LARGE SIGN. + 130" SMALL SIGN. = 629" TOTAL REQUIRED

MITIGATION FROM TREES PER UDC (1.5" OF EACH TREE NOT COUNTED TOWARDS MITIGATION) = 2 TREES/RESIDENTIAL LOT @ 234 LOTS = 468 TREES @ 1.5" MIN (NOT MITIGATION) = 702"

ADDITIONAL TREES PLANTED PER LOT = 2 LARGE SHADE TREES/RESIDENTIAL LOT @ 234 LOTS = 468 TREES @ 1.5" MIN = 702" FOR MITIGATION

MITIGATION FROM RESIDENTIAL LOT TREES = 702" FROM ADDITIONAL TREES = 702"

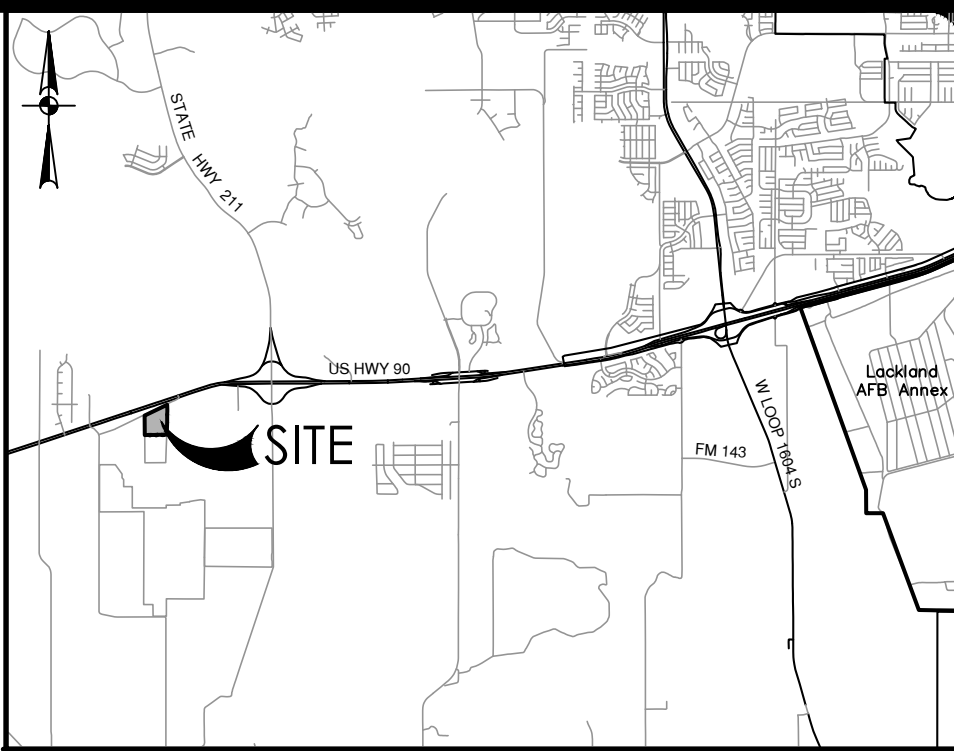
EXCESS MITIGATION = 702" MITIGATION PROVIDED - 629" MITIGATION REQUIRED = 73" EXCESS MITIGATION

GENERAL NOTES

- PROJECT COMPLIANCE IS BASED ON THE 2010 TREE ORDINANCE.
- TREES SHOWN WERE FIELD LOCATED AND INVENTORIED BASED ON AN ON THE GROUND TREE SURVEY.
- LAND USE FOR THE PURPOSES OF TREE CALCULATIONS SHALL BE SINGLE-FAMILY RESIDENTIAL.
- CONTRACTOR SHALL VERIFY CONDITION OF ALL TREES ON SITE AND NOTIFY ENGINEER OF ANY DISCREPANCIES, ERRORS, OR OMISSIONS IMMEDIATELY AND PRIOR TO THE REMOVAL OF ANY TREES WITHIN THE PROJECT LIMITS.
- DURING CONSTRUCTION THE CONTRACTOR SHALL MAKE EVERY EFFORT TO SAVE AND PROTECT FROM DAMAGE ANY AND ALL EXISTING TREES AS INDICATED ON THE PLANS AND NOTIFY ENGINEER IMMEDIATELY OF ANY CONFLICTS THAT MAY OCCUR.
- THE CONTRACTOR SHALL COORDINATE WITH THE CITY OF SAN ANTONIO ARBORIST'S OFFICE FOR COMPLIANCE WITH THIS TREE PLAN.
- THE CONTRACTOR SHALL TAKE FULL RESPONSIBILITY FOR DEVIATIONS FROM THIS TREE PLAN.
- TREES PLANTED SHALL COMPLY WITH UDC 35-523 (m) REGARDING PLANTING STANDARDS AND ALLOWABLE SPECIES PER UDC APPENDIX E.

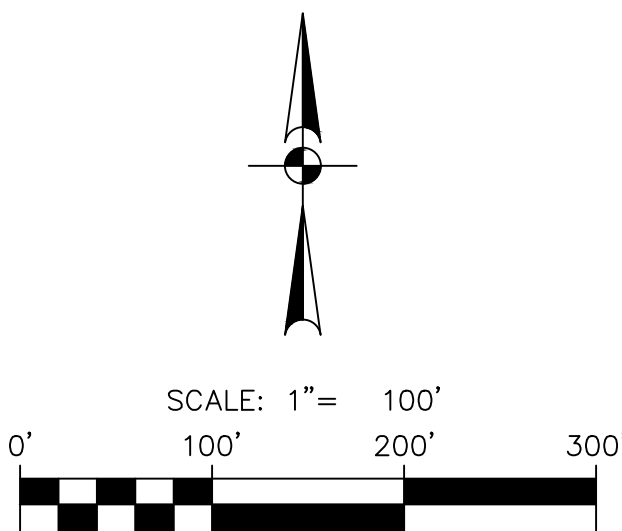
TREE PRESERVATION NOTES:

- ALL EXISTING TREES DENOTED ON THIS PLAN TO BE PRESERVED AS SHOWN AND PROTECTED AT THE ROOT PROTECTED ZONE (RPZ). THE RPZ SHALL BE DETERMINED BY TREE SIZE (RECOMMENDED 1" RADIUS FROM TRUNK FOR EVERY 1" DIAMETER OF TRUNK AT 4.5' FROM GROUND) WITH A MINIMUM ONE-HALF (1/2) THE ROOT PROTECTION ZONE RADIUS.
- A (CHAIN LINK OR ORANGE MESH FENCE) BARRIER AROUND THE RPZ SHALL BE ERECTED AND MAINTAINED UNTIL CONSTRUCTION IS COMPLETED.
- RPZ SHALL BE SUSTAINED IN A NATURAL STATE AND SHALL BE FREE FROM VEHICULAR OR MECHANICAL TRAFFIC; NO FILL, EQUIPMENT, LIQUIDS, OR CONSTRUCTION DEBRIS SHALL BE PLACED INSIDE THE PROTECTIVE ZONE.
- THE RPZ SHALL BE COVERED WITH MULCH TO REDUCE MOISTURE STRESS.
- ANY DAMAGE DONE TO EXISTING TREE CROWNS OR ROOT SYSTEMS SHALL BE REPAIRED IMMEDIATELY; ALL WOUNDS TO OAK TREES WILL BE PAINTED WITH PRUNING PAINT WITHIN 30 MINUTES AFTER DAMAGE. ROOTS EXPOSED DURING CONSTRUCTION OPERATIONS WILL BE CUT CLEANLY.
- THE PROPOSED FINISHED GRADE AND ELEVATION OF LAND WITHIN THE ROOT PROTECTION ZONE OF ANY TREES TO BE PRESERVED SHALL NOT BE RAISED OR LOWERED MORE THAN 3". WELLING AND RETAINING METHODS ARE ALLOWED OUTSIDE THE RPZ.
- THE RPZ SHALL REMAIN PEROUS, I.E. GROUND COVER OR TURF AT COMPLETION OF LANDSCAPE DESIGN.
- ALL BROKEN BRANCHES AND EXPOSED ROOTS TWO (2) INCHES IN DIAMETER OR GREATER OF SIGNIFICANT, HERITAGE OR MITIGATION TREES SHALL BE CUT CLEANLY AND IN ACCORDANCE WITH ANSI-300 STANDARDS. IN THE CASE OF OAK SPECIES, IN ORDER TO PREVENT INFECTION BY OAK WILT SPORES, WOUNDS MUST BE PAINTED WITH AN ACCEPTABLE WOUND DRESSING WITHIN THIRTY (30) MINUTES.



LOCATION MAP

NOT-TO-SCALE



LEGEND

- EXEMPT TREES (NOT COUNTED)
- SIGNIFICANT & REMOVED TREES
- SIGNIFICANT & SAVED TREES
- HERITAGE & REMOVED TREES
- HERITAGE & SAVED TREES
- RIPARIAN BUFFER TREES REMOVED
- RIPARIAN BUFFER TREES SAVED
- FEMA TREES REMOVED
- FEMA TREES SAVED
- FEMA FLOODPLAIN
- RIPARIAN BUFFER
- PROPOSED ELEVATION CONTOUR
- EXISTING ELEVATION CONTOUR
- PROJECT LIMITS

TREE PLANTING SUMMARY

EACH RESIDENTIAL LOT WILL PLANT 4 ~ 1.5" MINIMUM LARGE SPECIES TREES IN ACCORDANCE WITH THE CITY OF SAN ANTONIO UNIFIED DEVELOPMENT CODE AND REQUIREMENTS WITHIN THIS TREE PLAN. 2 OF THE 4 TREES MUST BE PLANTED ON THE SOUTH OR WEST SIDE OF THE HOME.

T2.00

T2.01

AREA EXCLUDED FROM MESQUITE RIDGE MASTER TREE PLAN. SEE STONHILL OFFSITE UTILITIES TREE PLAN

DEVELOPER/OWNER:

M/I HOMES OF SAN ANTONIO, LLC
4949 NORTH LOOP 1604 WEST
SAN ANTONIO, TEXAS 78249
(210) 818-7781

ENGINEER/PLAN PREPARER

PAPE-DAWSON ENGINEERS, INC
TBPE # 470
C/O BRUNA SPENGLER, P.E.
2000 NW LOOP 410
SAN ANTONIO, TEXAS 78232
(210) 375-9000

DATE OF PRINT:

March 14, 2024

PAPE-DAWSON
ENGINEERS

2000 NW LOOP 410 | SAN ANTONIO, TX 78213 | 210.375.9000
TEXAS ENGINEERING FIRM #470 | TEXAS SURVEYING FIRM #1008800

MESQUITE RIDGE
SAN ANTONIO, TEXAS

MASTER TREE PRESERVATION PLAN

PLAT NO. 12498-03
JOB NO. MARCH 2024
DATE
DESIGNER CB
CHECKED BS DRAWN AG
SHEET T1.00



~~GARY C. MUTZ AND~~
~~WIFE SHARON D. MUTZ~~
~~32.406 ACRES~~
~~VOL 10971, PG. 2268 OP~~

LEGEND

- EXEMPT TREES (NOT COUNTED)
- SIGNIFICANT & REMOVED TREES
- SIGNIFICANT & SAVED TREES
- HERITAGE & REMOVED TREES
- HERITAGE & SAVED TREES
- RIPARIAN BUFFER TREES REMOVED
- RIPARIAN BUFFER TREES SAVED
- FEMA TREES REMOVED
- FEMA TREES SAVED
- FEMA FLOODPLAIN
- RIPARIAN BUFFER
- PROPOSED ELEVATION CONTOUR - 914 -
- EXISTING ELEVATION CONTOUR - 905 -
- PROJECT LIMITS

TREE PLANTING SUMMARY

EACH RESIDENTIAL LOT WILL PLANT 4 ~ 1.5" MINIMUM LARGE SPECIES TREES IN ACCORDANCE WITH THE CITY OF SAN ANTONIO UNIFIED DEVELOPMENT CODE AND REQUIREMENTS WITHIN THIS TREE PLAN. 2 OF THE 4 TREES MUST BE PLANTED ON THE SOUTH OR WEST SIDE OF THE HOME.

MATCHLINE - SEE SHEET T2.02

[illegible]

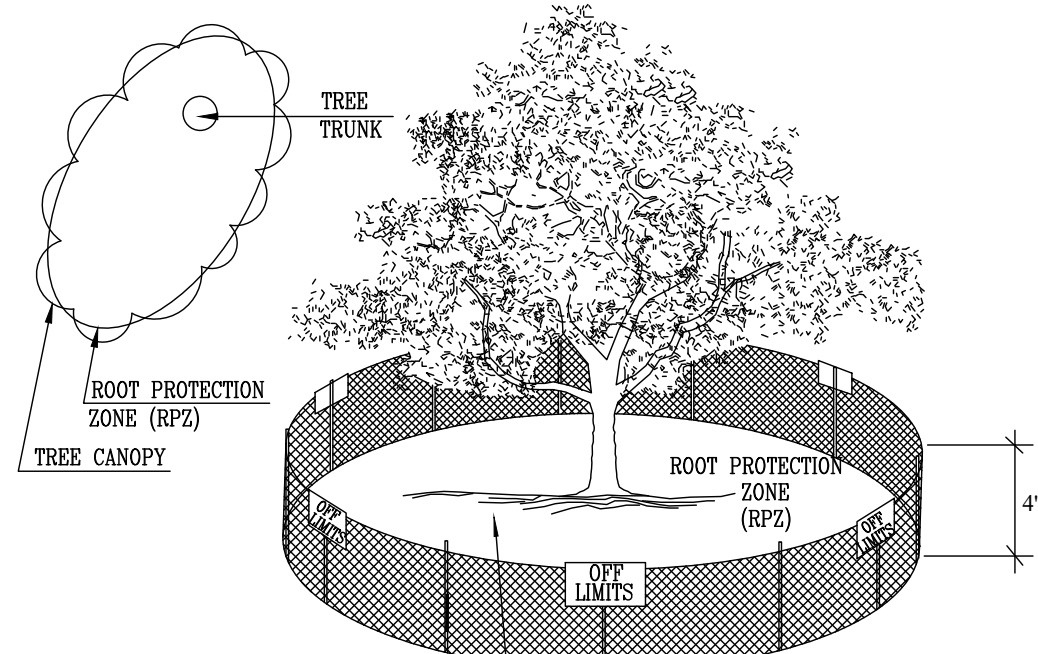
**PAPE-DAWSON
ENGINEERS**

2000 NW LOOP 410 | SAN ANTONIO, TX 78213 | 210.375.9000
TEXAS ENGINEERING FIRM #4270 | TEXAS SURVEYING FIRM #10028800

MESQUITE RIDGE
SAN ANTONIO, TEXAS

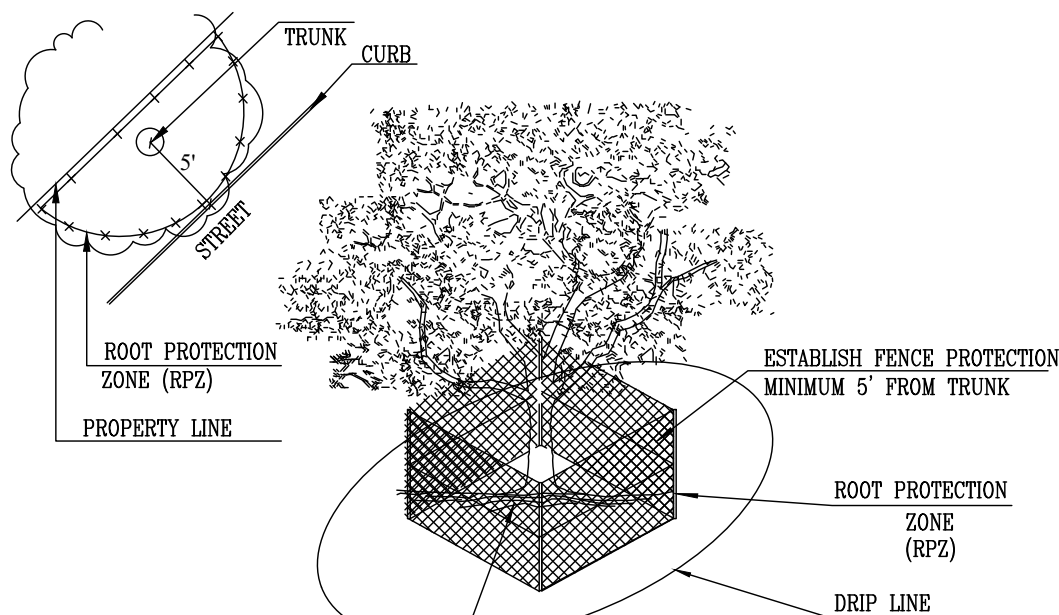
PLAT NO. _____
JOB NO. 12498-03
DATE MARCH 2024
DESIGNER CB
CHECKED BS DRAWN AG
SHEET T2.00

Date: March 11, 2024, 2:55 PM — User: ID: cburnis
File: P:\24\08\03\Design\Civil\Trees\240311 Mesquite Ridge Master
Tree Plan — Sheet 4 of 4



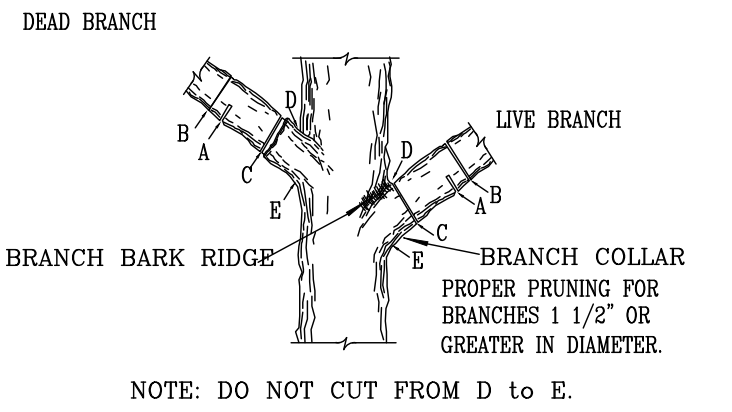
1.1.2 LEVEL I & FENCE PROTECTION

N. T. S.



1.1.3 LEVEL II A FENCE PROTECTION

N. T. S.



- A. FIRST CUT - TO PREVENT THE BARK FROM BEING PEELLED WHEN THE BRANCH FALLS.
B. SECOND CUT - TO REDUCE THE WEIGHT OF BRANCH.
C. FINAL CUT - ALLOW FOR HEALING COLLAR BUT NO STUBS.
D. BRANCH RIDGES - INDENT PROPERLY BRANCH RIDGES WHICH ARE SITE FOR DECAY.
E. BRANCH COLLAR - PROPER PRUNING FOR BRANCHES 1 1/2" OR GREATER IN DIAMETER.
- FOR OAKS ONLY: PAINT ALL WOUNDS OR CUTS WITH PRUNING PAINT WITHIN 20 MIN TO PREVENT THE SPREAD OF OAK WILT.

1.4 BRANCH PRUNING DETAIL

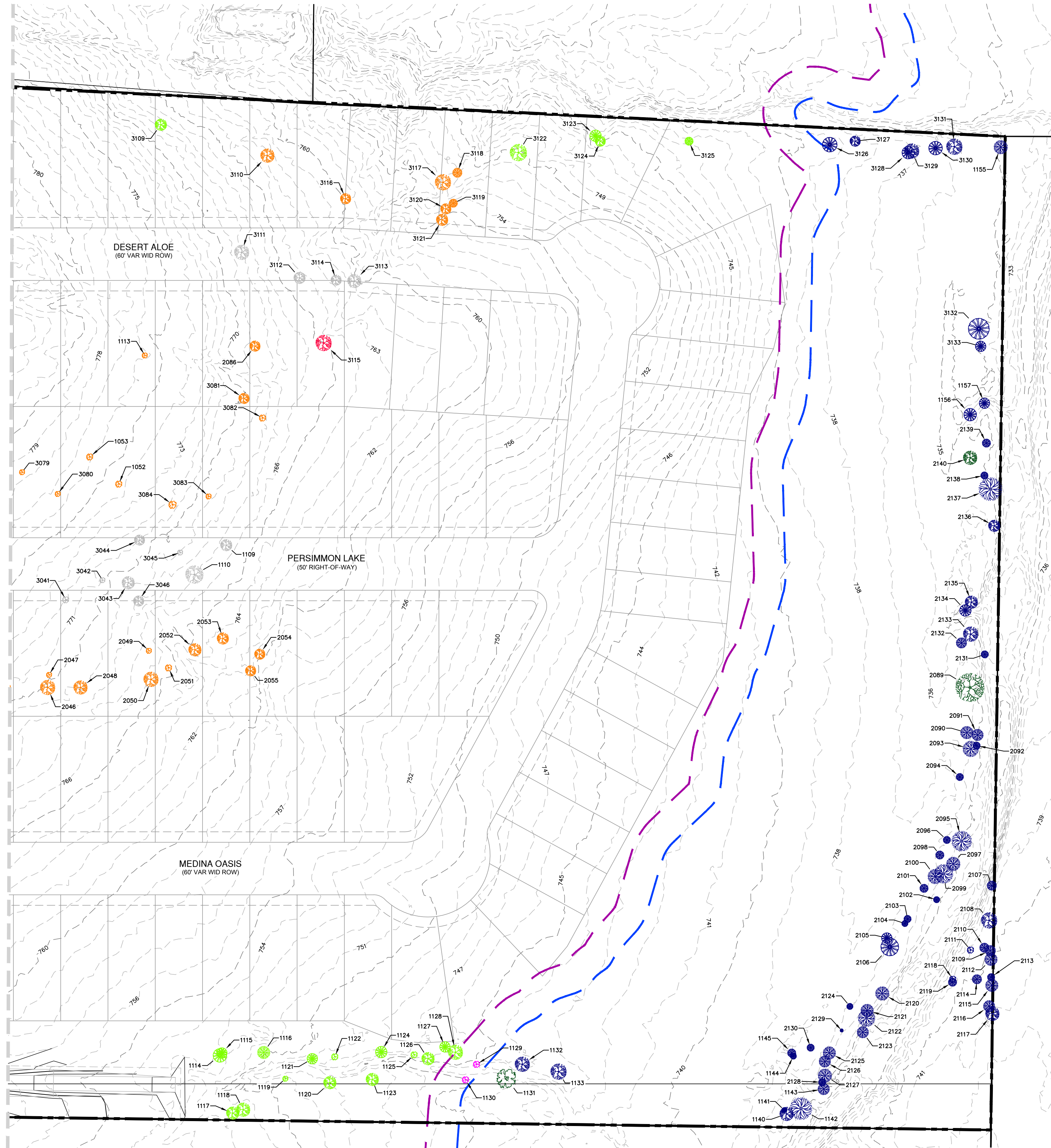
N. T. S.

TYPICAL LOT PLANTING DETAIL

SCALE: 1" = 50'

NOTE: TREES PLANTED IN THE SOUTH OR WEST OF PROPOSED HOME SHALL RECEIVE ENERGY CREDIT PER UDC SECTION 35-523.

MATCHLINE - SEE SHEET T2.02



POINTS									
POINT #	NORTHING	EASTING	SPECIES	SIZE	MULTI- TRUNK	ORDINANCE	SIZE CLASS	LOCATION CLASS	CONDITION
1001	13684868.45	2038357.14	HK	17	N	2010	SIGNIFICANT	NON-EXEMPT	REMOVED
1002	13684799.52	2038388.65	HK	15	N	2010	SIGNIFICANT	NON-EXEMPT	REMOVED
1003	13684909.49	2038477.80	MK	18	N	2010	SIGNIFICANT	NON-EXEMPT	REMOVED
1004	13684835.40	2038508.48	MK	16	N	2010	SIGNIFICANT	NON-EXEMPT	REMOVED
1005	13684772.70	2038481.77	MK	15	N	2010	SIGNIFICANT	EXEMPT	REMOVED
1006	13684775.28	2038421.78	MK	22	Y	2010	SIGNIFICANT	EXEMPT	REMOVED
1007	13684798.75	2038514.97	PERS	7	N	2010	SIGNIFICANT	EXEMPT	REMOVED
1008	13684747.62	2038508.56	MK	22	Y	2010	SIGNIFICANT	NON-EXEMPT	REMOVED
1009	13684771.33	2038552.00	MK	18.5	Y	2010	SIGNIFICANT	EXEMPT	REMOVED
1010	13684792.77	2038559.60	PERS	10	N	2010	SIGNIFICANT	EXEMPT	REMOVED
1011	13684761.16	2038588.19	PERS	15	N	2010	HERITAGE	NON-EXEMPT	SAVED
1012	13684688.34	2038612.85	MK	11	N	2010	SIGNIFICANT	NON-EXEMPT	REMOVED
1013	13684663.99	2038626.69	PERS	6	N	2010	SIGNIFICANT	NON-EXEMPT	REMOVED
1014	13684638.11	2038612.43	MK	15.5	Y	2010	SIGNIFICANT	NON-EXEMPT	REMOVED
1015	13684598.25	2038627.14	PERS	8.5	Y	2010	SIGNIFICANT	NON-EXEMPT	REMOVED
1016	13684600.70	2038643.16	PERS	8.5	Y	2010	SIGNIFICANT	NON-EXEMPT	REMOVED
1017	13684596.27	2038646.95	MK	12	N	2010	SIGNIFICANT	NON-EXEMPT	REMOVED
1018	13684575.64	2038652.20	MK	11	N	2010	SIGNIFICANT	NON-EXEMPT	REMOVED
1019	13684577.98	2038650.28	PERS	6	N	2010	SIGNIFICANT	NON-EXEMPT	REMOVED
1020	13684572.39	2038677.74	MK	16	N	2010	SIGNIFICANT	NON-EXEMPT	REMOVED
1021	13684561.03	2038667.64	MK	10	N	2010	SIGNIFICANT	NON-EXEMPT	REMOVED
1022	13684557.85	2038683.29	MK	15	N	2010	SIGNIFICANT	NON-EXEMPT	REMOVED
1023	13684534.02	2038667.14	PERS	7.5	Y	2010	SIGNIFICANT	NON-EXEMPT	REMOVED
1024	13684548.23	2038625.18	PERS	9	Y	2010	SIGNIFICANT	NON-EXEMPT	REMOVED
1025	13684543.37	2038635.49	PERS	6	N	2010	SIGNIFICANT	NON-EXEMPT	REMOVED
1026	13684452.40	2038591.06	PERS	12.5	Y	2010	HERITAGE	NON-EXEMPT	SAVED
1027	13684238.52	2038517.95	PERS	7	Y	2010	SIGNIFICANT	NON-EXEMPT	REMOVED
1028	13684254.66	2038513.24	PERS	5	N	2010	SIGNIFICANT	NON-EXEMPT	REMOVED
1029	13684246.00	2038490.84	PERS	5	N	2010	SIGNIFICANT	NON-EXEMPT	REMOVED
1030	13684239.81	2038555.42	PERS	5	N	2010	SIGNIFICANT	NON-EXEMPT	REMOVED
1031	13684223.69	2038545.70	PERS	6	N	2010	SIGNIFICANT	NON-EXEMPT	REMOVED
1032	13684209.32	2038583.22	PERS	7	N	2010	SIGNIFICANT	NON-EXEMPT	REMOVED
1033	13684195.49	2038521.18	PERS	10	Y	2010	SIGNIFICANT	NON-EXEMPT	REMOVED
1034	13684172.06	2038518.47	PERS	7	N	2010	SIGNIFICANT	NON-EXEMPT	REMOVED
1035	13684127.79	2038528.18	PERS	5	N	2010	SIGNIFICANT	NON-EXEMPT	REMOVED
1036	13684126.93	2038555.94	PERS	5	N	2010	SIGNIFICANT	NON-EXEMPT	REMOVED
1037	13684120.37	2038577.39	MK	12	N	2010	SIGNIFICANT	NON-EXEMPT	REMOVED
1038	13684123.02	2038607.52	MK	10	N	2010	SIGNIFICANT	NON-EXEMPT	REMOVED
1039	13684046.16	2038601.31	PERS	7	Y	2010	SIGNIFICANT	NON-EXEMPT	REMOVED
1040	13684003.91	2038601.66	PERS	7	Y	2010	SIGNIFICANT	NON-EXEMPT	REMOVED
1041	13684002.91	2038558.40	MK	15	N	2010	SIGNIFICANT	NON-EXEMPT	REMOVED
1042	13683995.60	2038550.02	MK	12	N	2010	SIGNIFICANT	NON-EXEMPT	REMOVED
1043	13684020.01	2038457.57	MK	13	N	2010	SIGNIFICANT	NON-EXEMPT	REMOVED
1044	13684008.45	2038521.30	MK	13	N	2010	SIGNIFICANT	NON-EXEMPT	REMOVED
1045	13683934.05	2038538.60	MK	14	N	2010	SIGNIFICANT	NON-EXEMPT	REMOVED
1046	13683773.47	2038580.88	MK	12	N	2010	SIGNIFICANT	NON-EXEMPT	REMOVED
1047	13683751.16	2038545.37	MK	10	N	2010	SIGNIFICANT	NON-EXEMPT	REMOVED
1049	13683699.77	2038574.44	MK	17	N	2010	SIGNIFICANT	NON-EXEMPT	REMOVED
1050	13683615.79	2038546.11	PERS	9	Y	2010	SIGNIFICANT	NON-EXEMPT	REMOVED
1051	13683595.34	2038518.49	PERS	6	N	2010	SIGNIFICANT	NON-EXEMPT	REMOVED
1052	13683436.88	2038529.94	PERS	6	N	2010	SIGNIFICANT	NON-EXEMPT	REMOVED
1053	13683464.99	2038555.28	PERS	10.5	Y	2010	SIGNIFICANT	NON-EXEMPT	REMOVED
1054	13684864.01	2038628.23	MK	21.5	Y	2010	SIGNIFICANT	EXEMPT	REMOVED
1055	13684880.00	2038644.48	MK	18	Y	2010	SIGNIFICANT	EXEMPT	REMOVED
1056	13684847.37	2038613.51	PERS	5	N	2010	SIGNIFICANT	EXEMPT	REMOVED
1057	13684875.22	2038694.76	MK	15	N	2010	SIGNIFICANT	EXEMPT	REMOVED
1058	13684847.09	2038702.68	MK	13	N	2010	SIGNIFICANT	EXEMPT	REMOVED
1059	13684860.11	2038770.03	MK	24	Y	2010	HERITAGE	NON-EXEMPT	REMOVED
1060	13684934.74	2038838.08	MK	25	N	2010	HERITAGE	EXEMPT	REMOVED
1063	13684442.02	2038890.26	MK	20	N	2010	SIGNIFICANT	NON-EXEMPT	SAVED
1064	13684437.72	2038914.10	MK	22	N	2010	SIGNIFICANT	NON-EXEMPT	SAVED
1065	13684454.95	2038815.76	MK	15	N	2010	SIGNIFICANT	NON-EXEMPT	REMOVED
1066	13684516.03	2038849.95	MK	21	N	2010	SIGNIFICANT	NON-EXEMPT	REMOVED
1067	13684521.24	2038816.23	MK	14	N	2010	SIGNIFICANT	NON-EXEMPT	REMOVED
1068	13684527.49	2038815.52	MK	10	N	2010	SIGNIFICANT	NON-EXEMPT	REMOVED
1069	13684551.78	2038832.17	MK	16	N	2010	SIGNIFICANT	NON-EXEMPT	REMOVED
1070	13684562.64	2038850.37	MK	13	N	2010	SIGNIFICANT	NON-EXEMPT	REMOVED
1071	13684543.04	2038880.65	MK	13	N	2010	SIGNIFICANT	NON-EXEMPT	SAVED
1072	13684585.67	2038894.75	MK	15	N	2010	SIGNIFICANT	NON-EXEMPT	SAVED
1073	13684580.51	2038901.21	MK	13	Y	2010	SIGNIFICANT	NON-EXEMPT	SAVED

					POINTS				
POINT #	NORTHING	EASTING	SPECIES	SIZE	MULTI- TRUNK	ORDINANCE	SIZE CLASS	LOCATION CLASS	CONDITION
1074	13684594.14	2038894.42	PERS	6	N	2010	SIGNIFICANT	NON-EXEMPT	SAVED
1075	13684602.15	2038896.23	PERS	7.5	Y	2010	SIGNIFICANT	NON-EXEMPT	SAVED
1076	13684637.07	2038937.49	MK	14	N	2010	SIGNIFICANT	NON-EXEMPT	SAVED
1077	13684626.87	2038927.89	PERS	5	N	2010	SIGNIFICANT	NON-EXEMPT	SAVED
1078	13684621.45	2038923.64	PERS	7	N	2010	SIGNIFICANT	NON-EXEMPT	SAVED
1079	13684406.58	2038830.17	MK	17	N	2010	SIGNIFICANT	NON-EXEMPT	REMOVED
1080	13684406.72	2038800.47	MK	12	N	2010	SIGNIFICANT	NON-EXEMPT	REMOVED
1081	13684401.77	2038797.62	MK	12	N	2010	SIGNIFICANT	NON-EXEMPT	REMOVED
1082	13684421.02	2038798.71	MK	13	N	2010	SIGNIFICANT	NON-EXEMPT	REMOVED
1083	13684409.78	2038777.28	MK	18	N	2010	SIGNIFICANT	NON-EXEMPT	REMOVED
1084	13684386.57	2038783.72	MK	16	N	2010	SIGNIFICANT	NON-EXEMPT	REMOVED
1085	13684382.27	2038751.30	MK	24	Y	2010	HERITAGE	EXEMPT	REMOVED
1086	13684409.14	2038740.97	MK	14	N	2010	SIGNIFICANT	EXEMPT	REMOVED
1087	13684479.67	2038758.18	MK	10	N	2010	SIGNIFICANT	EXEMPT	REMOVED
1088	13684504.97	2038753.27	MK	15.5	Y	2010	SIGNIFICANT	EXEMPT	REMOVED
1089	13684507.32	2038735.76	MK	17	N	2010	SIGNIFICANT	EXEMPT	REMOVED
1090	13684529.59	2038731.53	MK	12	N	2010	SIGNIFICANT	EXEMPT	REMOVED
1091	13684568.24	2038714.13	MK	14	N	2010	SIGNIFICANT	EXEMPT	REMOVED
1092	13684575.07	2038720.42	MK	18	N	2010	SIGNIFICANT	EXEMPT	REMOVED
1093	13684543.39	2038720.56	MK	14	N	2010	SIGNIFICANT	EXEMPT	REMOVED
1094	13684639.46	2038719.67	MK	15	N	2010	SIGNIFICANT	EXEMPT	REMOVED
1095	13684623.56	2038723.64	MK	11	N	2010	SIGNIFICANT	EXEMPT	REMOVED
1096	13684325.44	2038649.06	MK	10	N	2010	SIGNIFICANT	NON-EXEMPT	REMOVED
1097	13684278.61	2038696.32	MK	14	N	2010	SIGNIFICANT	EXEMPT	REMOVED
1098	13684285.24	2038680.68	PERS	5	N	2010	SIGNIFICANT	NON-EXEMPT	REMOVED
1099	13684280.26	2038670.14	PERS	6	N	2010	SIGNIFICANT	NON-EXEMPT	REMOVED
1100	13684235.23	2038715.87	MK	18	N	2010	SIGNIFICANT	EXEMPT	REMOVED
1101	13684215.91	2038710.73	PERS	5	N	2010	SIGNIFICANT	EXEMPT	REMOVED
1102	13684118.94	2038774.10	MK	15	N	2010	SIGNIFICANT	EXEMPT	REMOVED
1103	13684081.52	2038730.73	MK	12	N	2010	SIGNIFICANT	EXEMPT	REMOVED
1104	13684063.27	2038730.57	PERS	5	N	2010	SIGNIFICANT	EXEMPT	REMOVED
1105	13684031.03	2038720.61	MK	12	N	2010	SIGNIFICANT	EXEMPT	REMOVED
1106	13683998.08	2038707.89	MK	10	N	2010	SIGNIFICANT	EXEMPT	REMOVED
1107	13683988.16	2038715.92	CDR	11	Y	2010	SIGNIFICANT	EXEMPT	REMOVED
1108	13683935.96	2038721.83	MK	17	N	2010	SIGNIFICANT	EXEMPT	REMOVED
1109	13683333.69	2038473.35	MK	11	N	2010	SIGNIFICANT	EXEMPT	REMOVED
1110	13683363.49	2038444.84	MK	17	N	2010	SIGNIFICANT	EXEMPT	REMOVED
1113	13683414.29	2038652.81	PERS	5	N	2010	SIGNIFICANT	NON-EXEMPT	REMOVED
1114	13683331.41	2037987.56	HK	13	N	2010	SIGNIFICANT	NON-EXEMPT	SAVED
1115	13683329.56	2037989.90	HK	10	N	2010	SIGNIFICANT	NON-EXEMPT	SAVED
1116	13683289.77	2037991.06	ELM	12	N	2010	SIGNIFICANT	NON-EXEMPT	SAVED
1117	13683318.27	2037932.76	MK	17.5	Y	2010	SIGNIFICANT	NON-EXEMPT	SAVED
1118	13683308.33	2037936.21	MK	13	N	2010	SIGNIFICANT	NON-EXEMPT	SAVED
1119	13683268.63	2037966.54	PERS	5	N	2010	SIGNIFICANT	NON-EXEMPT	SAVED
1120	13683226.27	2037963.35	MK	22	Y	2010	SIGNIFICANT	NON-EXEMPT	SAVED
1121	13683243.42	2037985.94	HK	10	N	2010	SIGNIFICANT	NON-EXEMPT	SAVED
1122	13683221.95	2037988.17	PERS	6	N	2010	SIGNIFICANT	NON-EXEMPT	SAVED
1123	13683185.97	2037967.09	MK	17	Y	2010	SIGNIFICANT	NON-EXEMPT	SAVED
1124	13683177.91	2037993.38	HK	11	N	2010	SIGNIFICANT	NON-EXEMPT	SAVED
1125	13683146.51	2037991.32	PERS	6	N	2010	SIGNIFICANT	NON-EXEMPT	SAVED
1126	13683133.28	2037987.78	MK	12	N	2010	SIGNIFICANT	NON-EXEMPT	SAVED
1127	13683117.38	2037999.34	HK	10	N	2010	SIGNIFICANT	NON-EXEMPT	SAVED
1128	13683107.31	2037994.34	MK	17	Y	2010	SIGNIFICANT	NON-EXEMPT	SAVED
1129	13683086.97	2037983.33	PERS	6	N	2010	SIGNIFICANT	ESA	SAVED
1130	13683097.23	2037968.42	PERS	6	N	2010	SIGNIFICANT	ESA	SAVED
1131	13683058.22	2037970.53	PERS	17.5	Y	2010	HERITAGE	FLOODPLAIN	SAVED
1132	13683043.45	2037984.02	MK	20.5	Y	2010	SIGNIFICANT	FLOODPLAIN	SAVED
1133	13683008.85	2037977.57	MK	15	N	2010	SIGNIFICANT	FLOODPLAIN	SAVED
1140	13682791.18	2037941.05	MK	13	N	2010	SIGNIFICANT	FLOODPLAIN	SAVED
1141	13682793.48	2037944.63	CON	5	N	2010	SIGNIFICANT	FLOODPLAIN	SAVED
1142	13682777.61	2037946.40	ELM	21	N	2010	SIGNIFICANT	FLOODPLAIN	SAVED
1143	13682756.29	2037965.40	ELM	11	N	2010	SIGNIFICANT	FLOODPLAIN	SAVED
1144	13682785.75	2037996.26	ELM	6	N	2010	SIGNIFICANT	FLOODPLAIN	SAVED
1145	13682787.33	2037999.19	ELM	8	N	2010	SIGNIFICANT	FLOODPLAIN	SAVED
1155	13682603.25	2038865.01	ELM	13	N	2010	SIGNIFICANT	FLOODPLAIN	SAVED
1156	13682627.97	2038609.87	HK	12	N	2010	SIGNIFICANT	FLOODPLAIN	SAVED
1157	13682614.58	2038620.94	MK	10	N	2010	SIGNIFICANT	FLOODPLAIN	SAVED
2001	13684858.02	2038299.09	MK	13	N	2010	SIGNIFICANT	EXEMPT	REMOVED
2002	13684837.91	2038306.88	MK	14	N	2010	SIGNIFICANT	NON-EXEMPT	REMOVED
2003	13684777.76	2038340.97	MK	17	N	2010	SIGNIFICANT	NON-EXEMPT	REMOVED

POINTS									
POINT #	NORTHING	EASTING	SPECIES	SIZE	MULTI- TRUNK	ORDINANCE	SIZE CLASS	LOCATION CLASS	CONDITION
3006	13684736.59	2038548.81	MK	21	Y	2010	SIGNIFICANT	NON-EXEMPT	REMOVED
3007	13684668.03	2038558.40	PERS	8.5	Y	2010	SIGNIFICANT	NON-EXEMPT	REMOVED
3008	13684699.96	2038564.36	MK	13.5	Y	2010	SIGNIFICANT	NON-EXEMPT	REMOVED
3009	13684631.99	2038581.32	PERS	5	N	2010	SIGNIFICANT	NON-EXEMPT	REMOVED
3010	13684595.84	2038606.52	PERS	11	Y	2010	SIGNIFICANT	NON-EXEMPT	REMOVED
3011	13684524.58	2038580.09	PERS	16.5	Y	2010	HERITAGE	NON-EXEMPT	SAVED
3012	13684530.93	2038607.06	PERS	11.5	Y	2010	SIGNIFICANT	NON-EXEMPT	REMOVED
3013	13684521.51	2038615.98	PERS	12	Y	2010	HERITAGE	NON-EXEMPT	REMOVED
3014	13684498.01	2038611.14	PERS	7	N	2010	SIGNIFICANT	NON-EXEMPT	REMOVED
3015	13684218.79	2038468.29	PERS	7	N	2010	SIGNIFICANT	EXEMPT	REMOVED
3016	13684171.26	2038456.34	MK	11	N	2010	SIGNIFICANT	EXEMPT	REMOVED
3017	13684154.12	2038482.71	MK	10	N	2010	SIGNIFICANT	NON-EXEMPT	REMOVED
3018	13684158.98	2038419.54	PERS	6	N	2010	SIGNIFICANT	EXEMPT	REMOVED
3019	13684104.57	2038451.76	PERS	5	N	2010	SIGNIFICANT	EXEMPT	REMOVED
3020	13684061.21	2038491.19	MK	11	N	2010	SIGNIFICANT	NON-EXEMPT	REMOVED
3021	13683993.05	2038454.60	MK	11	N	2010	SIGNIFICANT	EXEMPT	REMOVED
3022	13683970.49	2038467.88	PERS	22	N	2010	HERITAGE	EXEMPT	REMOVED
3023	13683957.77	2038467.51	MK	10	N	2010	SIGNIFICANT	EXEMPT	REMOVED
3024	13683972.69	2038449.86	PERS	8	Y	2010	SIGNIFICANT	EXEMPT	REMOVED
3025	13683934.30	2038413.26	PERS	6	N	2010	SIGNIFICANT	EXEMPT	REMOVED
3026	13683962.77	2038486.88	PERS	7	N	2010	SIGNIFICANT	NON-EXEMPT	REMOVED
3027	13683962.46	2038519.74	MK	14	N	2010	SIGNIFICANT	NON-EXEMPT	REMOVED
3028	13683907.75	2038499.66	PERS	7	Y	2010	SIGNIFICANT	EXEMPT	REMOVED
3029	13683851.92	2038556.68	PERS	7	N	2010	SIGNIFICANT	EXEMPT	REMOVED
3030	13683834.85	2038555.24	PERS	7	Y	2010	SIGNIFICANT	NON-EXEMPT	REMOVED
3031	13683830.97	2038553.85	PERS	5	N	2010	SIGNIFICANT	NON-EXEMPT	REMOVED
3032	13683831.88	2038526.57	PERS	5	N	2010	SIGNIFICANT	NON-EXEMPT	REMOVED
3033	13683788.37	2038466.70	PERS	5	N	2010	SIGNIFICANT	EXEMPT	REMOVED
3034	13683740.32	2038424.98	PERS	6	N	2010	SIGNIFICANT	EXEMPT	REMOVED
3035	13683744.45	2038456.74	PERS	5	N	2010	SIGNIFICANT	EXEMPT	REMOVED
3036	13683729.51	2038489.79	PERS	7.5	Y	2010	SIGNIFICANT	NON-EXEMPT	REMOVED
3037	13683724.53	2038497.08	PERS	5	N	2010	SIGNIFICANT	NON-EXEMPT	REMOVED
3038	13683665.71	2038420.10	PERS	6	Y	2010	SIGNIFICANT	EXEMPT	REMOVED
3039	13683550.07	2038401.90	PERS	8	Y	2010	SIGNIFICANT	NON-EXEMPT	REMOVED
3040	13683557.40	2038406.81	PERS	5.5	Y	2010	SIGNIFICANT	NON-EXEMPT	REMOVED
3041	13683485.49	2038418.87	PERS	10.5	Y	2010	SIGNIFICANT	EXEMPT	REMOVED
3042	13683450.89	2038438.13	PERS	5	N	2010	SIGNIFICANT	EXEMPT	REMOVED
3043	13683426.35	2038436.00	MK	12	N	2010	SIGNIFICANT	EXEMPT	REMOVED
3044	13683416.31	2038476.82	MK	10	N	2010	SIGNIFICANT	EXEMPT	REMOVED
3045	13683377.41	2038465.73	PERS	5	N	2010	SIGNIFICANT	EXEMPT	REMOVED
3046	13683316.14	2038418.80	MK	10	N	2010	SIGNIFICANT	EXEMPT	REMOVED
3047	13685091.19	2038934.49	MK	20.5	Y	2010	SIGNIFICANT	NON-EXEMPT	SAVED
3048	13684816.99	2038877.73	PERS	11	Y	2010	SIGNIFICANT	NON-EXEMPT	REMOVED
3049	13684719.99	2038940.48	PERS	7.5	Y	2010	SIGNIFICANT	NON-EXEMPT	SAVED
3050	13684646.42	2038893.57	ELM	8	N	2010	SIGNIFICANT	NON-EXEMPT	SAVED
3051	13684600.60	2038843.05	MK	13	N	2010	SIGNIFICANT	NON-EXEMPT	REMOVED
3052	13684617.93	2038850.49	MK	10	N	2010	SIGNIFICANT	NON-EXEMPT	REMOVED
3053	13684601.17	2038822.34	MK	16	N	2010	SIGNIFICANT	NON-EXEMPT	REMOVED
3054	13684569.43	2038781.15	MK	13	N	2010	SIGNIFICANT	NON-EXEMPT	REMOVED
3055	13684558.56	2038746.04	MK	23	N	2010	SIGNIFICANT	NON-EXEMPT	REMOVED
3056	13684596.67	2038742.24	MK	19.5	Y	2010	SIGNIFICANT	EXEMPT	REMOVED
3057	13684607.04	2038767.86	MK	10	N	2010	SIGNIFICANT	EXEMPT	REMOVED
3058	13684645.23	2038763.30	MK	18	N	2010	SIGNIFICANT	EXEMPT	REMOVED
3059	13684659.61	2038729.44	MK	19.5	Y	2010	SIGNIFICANT	EXEMPT	REMOVED
3060	13684737.57	2038727.68	HK	10	N	2010	SIGNIFICANT	EXEMPT	REMOVED
3061	13684751.86	2038694.11	MK	17	N	2010	SIGNIFICANT	EXEMPT	REMOVED
3062	13684764.55	2038685.33	MK	19	N	2010	SIGNIFICANT	EXEMPT	REMOVED
3063	13684769.31	2038713.61	PERS	13	Y	2010	HERITAGE	EXEMPT	REMOVED
3064	13684724.63	2038757.37	MK	22	N	2010	SIGNIFICANT	NON-EXEMPT	REMOVED
3065	13684648.77	2038806.82	MK	15.5	Y	2010	SIGNIFICANT	NON-EXEMPT	REMOVED
3066	13684815.60	2038699.34	PERS	10	Y	2010	SIGNIFICANT	EXEMPT	REMOVED
3067	13684800.31	2038702.24	MK	10	N	2010	SIGNIFICANT	EXEMPT	REMOVED
3068	13684758.17	2038663.14	MK	12	N	2010	SIGNIFICANT	EXEMPT	REMOVED
3069	13684759.38	2038652.88	MK	10	N	2010	SIGNIFICANT	EXEMPT	REMOVED
3070	13684288.49	2038522.97	PERS	5	N	2010	SIGNIFICANT	NON-EXEMPT	REMOVED
3071	13684240.58	2038610.40	PERS	7	Y	2010	SIGNIFICANT	NON-EXEMPT	REMOVED
3072	13684217.70	2038656.58	PERS	7.5	Y	2010	SIGNIFICANT	NON-EXEMPT	REMOVED
3073	13684146.06	2038681.70	PERS	5	N	2010	SIGNIFICANT	NON-EXEMPT	REMOVED
3074	13684116.05	2038660.58	PERS	12.5	Y	2010	HERITAGE	NON-EXEMPT	REMOVED
3075	13684079.84	2038684.11	MK	14.5	Y	2010	SIGNIFICANT	NON-EXEMPT	REMOVED

POINTS									
POINT #	NORTHING	EASTING	SPECIES	SIZE	MULTI- TRUNK	ORDINANCE	SIZE CLASS	LOCATION CLASS	CONDITION
3076	13683726.06	2038633.89	MK	12	Y	2010	SIGNIFICANT	NON-EXEMPT	REMOVED
3077	13683827.63	2038715.32	MK	18	Y	2010	SIGNIFICANT	EXEMPT	REMOVED
3078	13683571.03	2038611.98	PERS	6.5	Y	2010	SIGNIFICANT	NON-EXEMPT	REMOVED
3079	13683529.10	2038539.64	PERS	5	N	2010	SIGNIFICANT	NON-EXEMPT	REMOVED
3080	13683494.82	2038519.57	PERS	7	Y	2010	SIGNIFICANT	NON-EXEMPT	REMOVED
3081	13683319.22	2038613.36	MK	10	N	2010	SIGNIFICANT	NON-EXEMPT	REMOVED
3082	13683301.16	2038595.19	PERS	6	N	2010	SIGNIFICANT	NON-EXEMPT	REMOVED
3083	13683351.22	2038519.63	PERS	5	N	2010	SIGNIFICANT	NON-EXEMPT	REMOVED
3084	13683385.35	2038511.13	PERS	9.5	Y	2010	SIGNIFICANT	NON-EXEMPT	REMOVED
3087	13684340.09	2038797.11	MK	21	N	2010	SIGNIFICANT	NON-EXEMPT	REMOVED
3088	13684342.15	2038809.02	PERS	6	N	2010	SIGNIFICANT	NON-EXEMPT	REMOVED
3089	13684354.58	2038830.70	MK	21	N	2010	SIGNIFICANT	NON-EXEMPT	REMOVED
3090	13684347.23	2038830.40	PERS	5	N	2010	SIGNIFICANT	NON-EXEMPT	REMOVED
3091	13684334.90	2038828.59	MK	12	N	2010	SIGNIFICANT	NON-EXEMPT	REMOVED
3092	13684338.58	2038872.30	PERS	5	N	2010	SIGNIFICANT	NON-EXEMPT	SAVED
3093	13684253.39	2038852.51	MK	15	Y	2010	SIGNIFICANT	NON-EXEMPT	REMOVED
3094	13684206.65	2038832.00	MK	16	Y	2010	SIGNIFICANT	NON-EXEMPT	REMOVED
3095	13684145.02	2038882.94	MK	12	N	2010	SIGNIFICANT	NON-EXEMPT	SAVED
3096	13684145.16	2038902.79	MK	11	N	2010	SIGNIFICANT	NON-EXEMPT	SAVED
3097	13684117.49	2038876.09	PERS	5	N	2010	SIGNIFICANT	NON-EXEMPT	SAVED
3098	13684089.57	2038815.46	MK	17	N	2010	SIGNIFICANT	NON-EXEMPT	REMOVED
3099	13684156.63	2038831.73	PERS	5	N	2010	SIGNIFICANT	NON-EXEMPT	REMOVED
3100	13684386.31	2038920.83	MK	16.5	Y	2010	SIGNIFICANT	NON-EXEMPT	SAVED
3101	13683963.69	2038892.15	MK	15	N	2010	SIGNIFICANT	NON-EXEMPT	REMOVED
3102	13683936.67	2038900.70	MK	15	Y	2010	SIGNIFICANT	NON-EXEMPT	SAVED
3103	13683979.75	2038836.12	MK	14	Y	2010	SIGNIFICANT	NON-EXEMPT	REMOVED
3104	13683959.09	2038784.93	PERS	5	N	2010	SIGNIFICANT	NON-EXEMPT	REMOVED
3105	13683831.67	2038877.42	PERS	7	Y	2010	SIGNIFICANT	NON-EXEMPT	SAVED
3106	13683833.26	2038886.12	MK	10	N	2010	SIGNIFICANT	NON-EXEMPT	SAVED
3107	13683745.59	2038914.31	MK	17	Y	2010	SIGNIFICANT	NON-EXEMPT	SAVED
3108	13683578.01	2038898.25	ELM	10	N	2010	SIGNIFICANT	NON-EXEMPT	SAVED
3109	13683402.80	2038872.56	MK	11	N	2010	SIGNIFICANT	NON-EXEMPT	SAVED
3110	13683300.88	2038844.93	MK	13	N	2010	SIGNIFICANT	NON-EXEMPT	REMOVED
3111	13683323.79	2038752.41	MK	14	N	2010	SIGNIFICANT	EXEMPT	REMOVED
3112	13683268.32	2038729.03	MK	15	Y	2010	SIGNIFICANT	EXEMPT	REMOVED
3113	13683216.13	2038727.00	MK	24	Y	2010	HERITAGE	EXEMPT	REMOVED
3114	13683233.47	2038727.54	MK	13	Y	2010	SIGNIFICANT	EXEMPT	REMOVED
3115	13683244.33	2038667.44	MK	28.5	Y	2010	HERITAGE	NON-EXEMPT	REMOVED
3116	13683225.79	2038805.22	MK	14	Y	2010	SIGNIFICANT	NON-EXEMPT	REMOVED
3117	13683133.38	2038822.41	MK	19	Y	2010	SIGNIFICANT	NON-EXEMPT	REMOVED
3118	13683119.92	2038831.79	ELM	9	N	2010	SIGNIFICANT	NON-EXEMPT	REMOVED
3119	13683123.27	2038802.74	ELM	8	N	2010	SIGNIFICANT	NON-EXEMPT	REMOVED
3120	13683130.25	2038797.17	MK	10	N	2010	SIGNIFICANT	NON-EXEMPT	REMOVED
3121	13683133.61	2038786.64	MK	11	N	2010	SIGNIFICANT	NON-EXEMPT	REMOVED
3122	13683062.13	2038851.91	MK	22	Y	2010	SIGNIFICANT	NON-EXEMPT	SAVED
3123	13682989.01	2038869.27	HK	11	N	2010	SIGNIFICANT	NON-EXEMPT	SAVED
3124	13682984.45	2038864.17	MK	10	N	2010	SIGNIFICANT	NON-EXEMPT	SAVED
3125	13682899.97	2038865.62	ELM	8	N	2010	SIGNIFICANT	NON-EXEMPT	SAVED
3126	13682766.02	2038864.63	HK	14	N	2010	SIGNIFICANT	FLOODPLAIN	SAVED
3127	13682741.87	2038868.30	MK	10	N	2010	SIGNIFICANT	FLOODPLAIN	SAVED
3128	13682691.15	2038858.32	HK	12	N	2010	SIGNIFICANT	FLOODPLAIN	SAVED
3129	13682687.90	2038859.82	MK	14	N	2010	SIGNIFICANT	FLOODPLAIN	SAVED
3130	13682665.25	2038863.06	HK	13	N	2010	SIGNIFICANT	FLOODPLAIN	SAVED
3131	13682647.36	2038864.63	MK	15	N	2010	SIGNIFICANT	FLOODPLAIN	SAVED
3132	13682621.16	2038691.78	HK	20	N	2010	SIGNIFICANT	FLOODPLAIN	SAVED
3133	13682619.09	2038675.09	HK	10	N	2010	SIGNIFICANT	FLOODPLAIN	SAVED