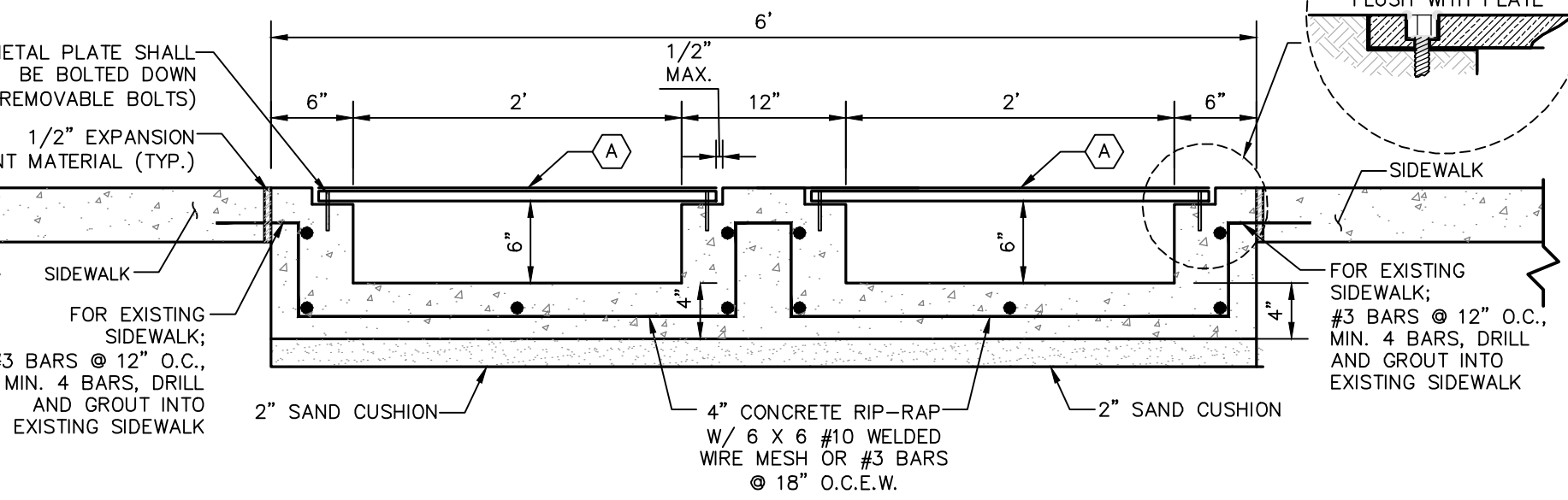
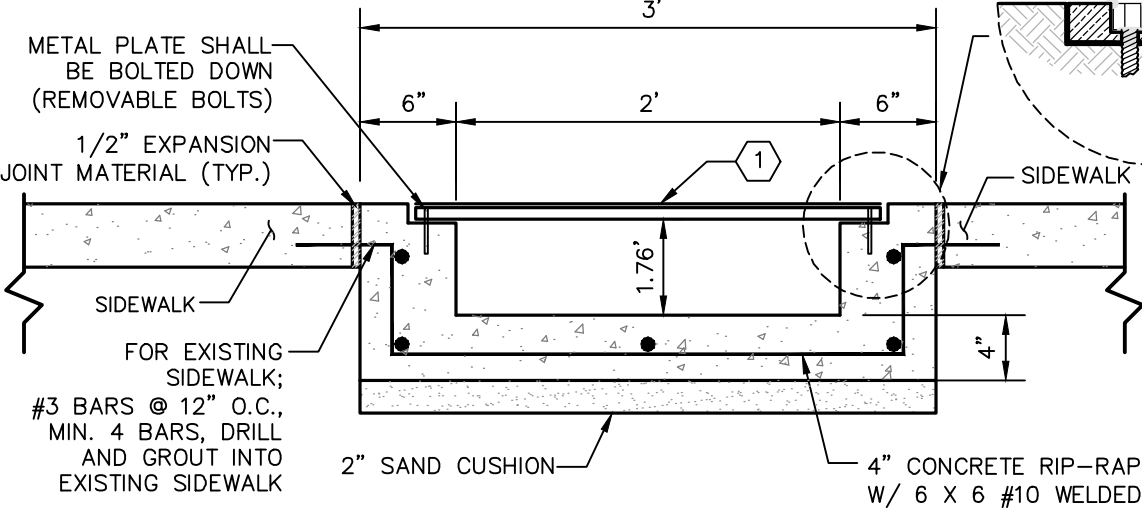


(A) CONTRACTOR SHALL INSTALL 1/4" THICK BY THE WIDTH OF SIDEWALK, PAINTED SILVER AND SCORED METAL DIAMOND PLATE WHERE SHOWN ON PLANS. SUBMIT SHOP DRAWING FOR APPROVAL.

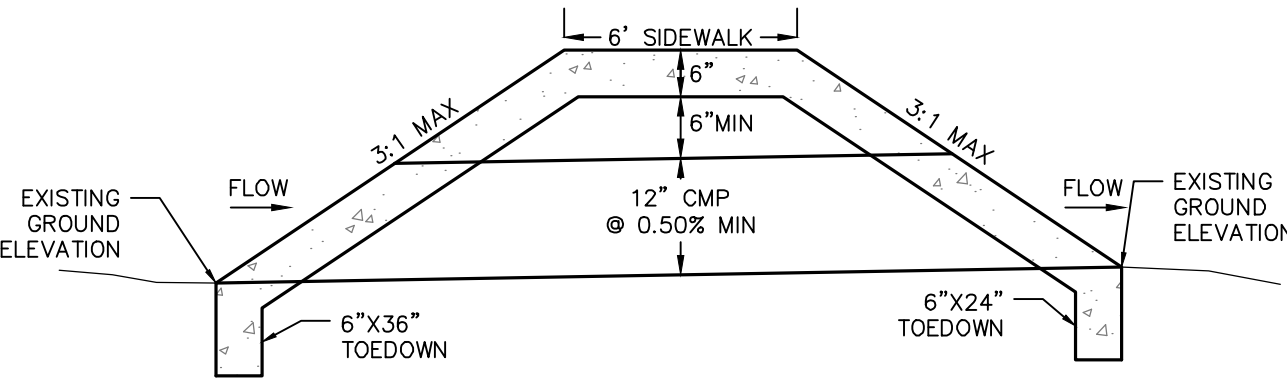


DETAIL A
NOT-TO-SCALE

(1) CONTRACTOR SHALL INSTALL 1/4" THICK BY THE WIDTH OF SIDEWALK, PAINTED SILVER AND SCORED METAL DIAMOND PLATE WHERE SHOWN ON PLANS. SUBMIT SHOP DRAWING FOR APPROVAL.



DETAIL B
NOT-TO-SCALE



SECTION "A-A"
NOT-TO-SCALE

CAUTION!!

EXISTING UTILITIES ARE LOCATED WITHIN THE LIMITS OF THE CONSTRUCTION OF THIS PROJECT. THE CONTRACTOR SHALL EXERCISE EXTRA CARE IN DIGGING ANY TRENCH FOR PROPOSED UTILITIES. THE CONTRACTOR SHALL BE RESPONSIBLE FOR COORDINATING, VERIFYING THE EXACT LOCATION AND IDENTIFYING ANY AREAS OF CONFLICTS WITH EXISTING UTILITIES AND WILL NOTIFY THE ENGINEER IMMEDIATELY IF CONFLICTS ARE FOUND.

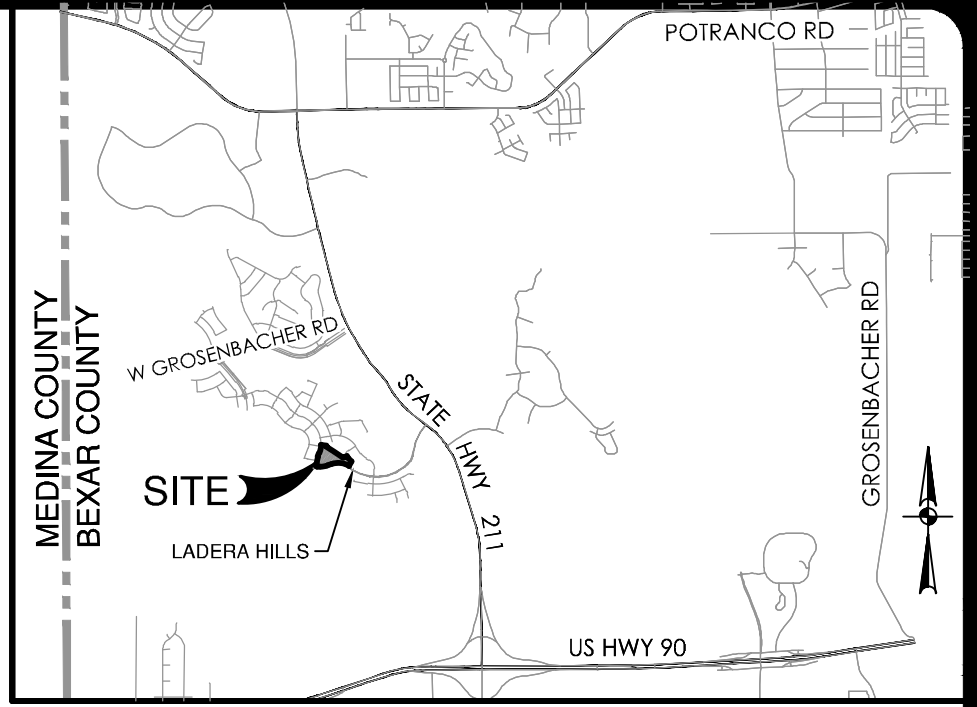
CAUTION!!

CONTRACTOR SHALL BE REQUIRED TO LOCATE ALL PUBLIC OR PRIVATE UTILITIES INCLUDING BUT NOT LIMITING TO: WATER, SEWER, TELEPHONE AND FIBER OPTIC LINES, SITE LIGHTING, SECONDARY ELECTRIC, PRIMARY ELECTRICAL DUCTBANKS, LANDSCAPE IRRIGATION FACILITIES, AND GAS LINES. ANY UTILITY CONFLICTS THAT ARISE SHOULD BE COMMUNICATED TO THE ENGINEER IMMEDIATELY AND PRIOR TO CONSTRUCTION. THE CONTRACTOR SHALL CONTACT 1-800-DIG-TESS A MINIMUM OF 48 HOURS PRIOR TO THE START OF CONSTRUCTION. ANY DAMAGE TO EXISTING UTILITIES SHALL BE THE SOLE RESPONSIBILITY OF THE CONTRACTOR AND THE REPAIR SHALL BE AT CONTRACTOR'S SOLE EXPENSE WHETHER THE UTILITY IS SHOWN ON THESE PLANS OR NOT.

TRENCH EXCAVATION SAFETY PROTECTION

CONTRACTOR AND/OR CONTRACTOR'S INDEPENDENTLY RETAINED EMPLOYEE OR STRUCTURAL DESIGN/ GEOTECHNICAL/ SAFETY/EQUIPMENT CONSULTANT, IF ANY, SHALL REVIEW THESE PLANS AND ANY AVAILABLE GEOTECHNICAL INFORMATION AND THE ANTICIPATED INSTALLATION SITES WITHIN THE PROJECT WORK AREA IN ORDER TO IMPLEMENT CONTRACTOR'S TRENCH EXCAVATION SAFETY PROTECTION SYSTEMS, PROGRAMS AND/OR PROCEDURES FOR THE PROJECT DESCRIBED IN THE CONTRACT DOCUMENTS. THE CONTRACTOR'S IMPLEMENTATION OF THESE SYSTEMS, PROGRAMS AND/OR PROCEDURES SHALL PROVIDE FOR ADEQUATE TRENCH EXCAVATION SAFETY PROTECTION THAT COMPLY WITH AS A MINIMUM, OSHA STANDARDS FOR TRENCH EXCAVATIONS. SPECIFICALLY, CONTRACTOR AND/OR CONTRACTOR'S INDEPENDENTLY RETAINED EMPLOYEE OR SAFETY CONSULTANT SHALL IMPLEMENT A TRENCH SAFETY PROGRAM IN ACCORDANCE WITH OSHA STANDARDS GOVERNING THE PRESENCE AND ACTIVITIES OF INDIVIDUALS WORKING IN AND AROUND TRENCH EXCAVATION.

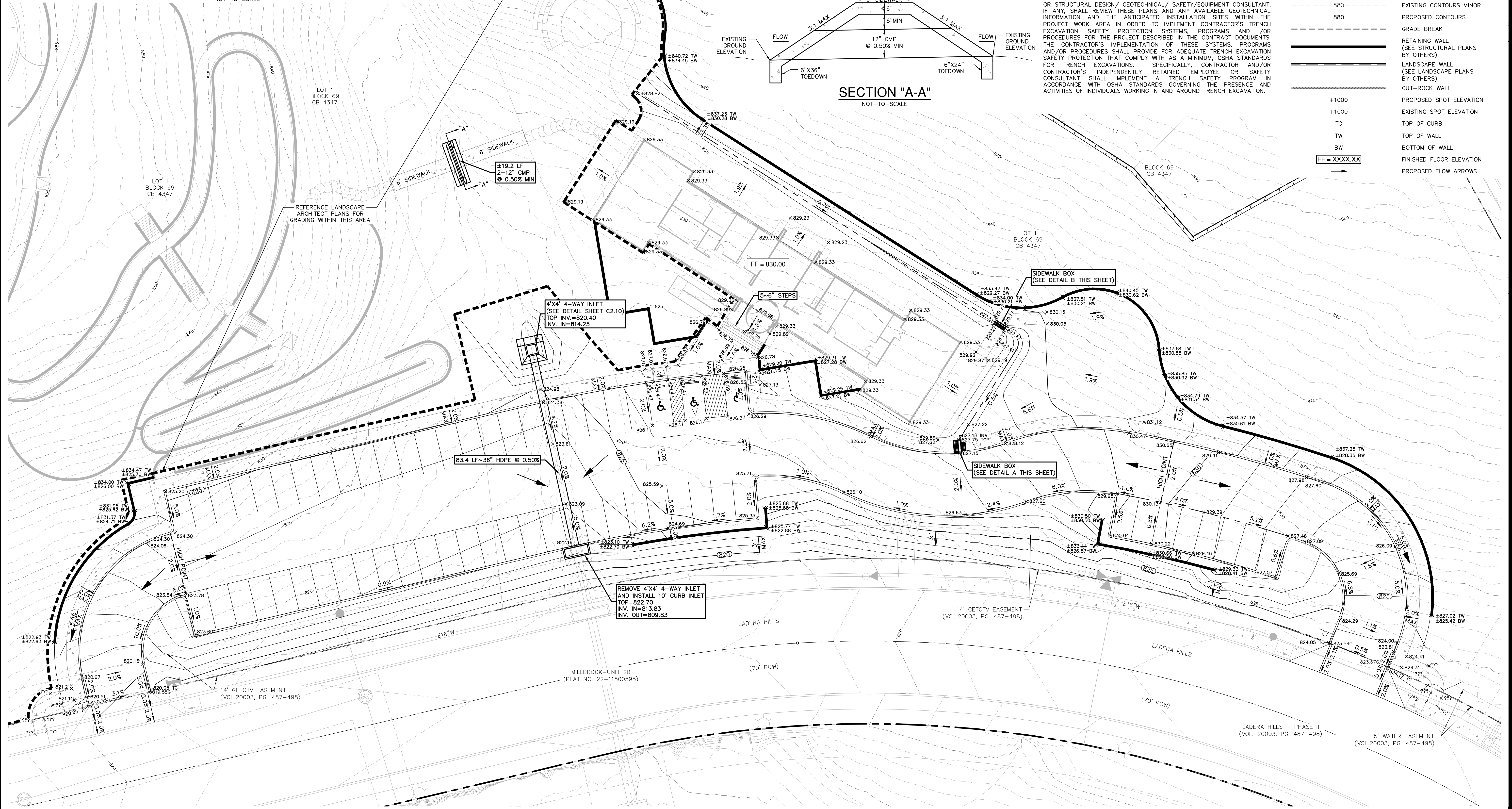
SCALE: 1" = 20'
20' 40' 60'



LOCATION MAP
NOT-TO-SCALE

LEGEND

---	LOT LINE
---	EXISTING CONTOURS MAJOR
---	EXISTING CONTOURS MINOR
---	PROPOSED CONTOURS
---	GRADE BREAK
---	RETAINING WALL (SEE STRUCTURAL PLANS BY OTHERS)
---	LANDSCAPE WALL (SEE LANDSCAPE PLANS BY OTHERS)
---	CUT-ROCK WALL
---	PROPOSED SPOT ELEVATION
---	EXISTING SPOT ELEVATION
---	TC TOP OF CURB
---	TW TOP OF WALL
---	BW BOTTOM OF WALL
---	FINISHED FLOOR ELEVATION
---	PROPOSED FLOW ARROWS



PAPE-DAWSON
ENGINEERS

MILLBROOK AMENITY CENTER
BEXAR COUNTY, TEXAS

GRADING AND DRAINAGE PLAN
SHEET 1 OF 2

PLAT NO. 6445-81
JOB NO. 6445-81
DATE JULY 2023
DESIGNER JB
CHECKED BAC DRAWN JB
SHEET C2.00

7/17/2023

