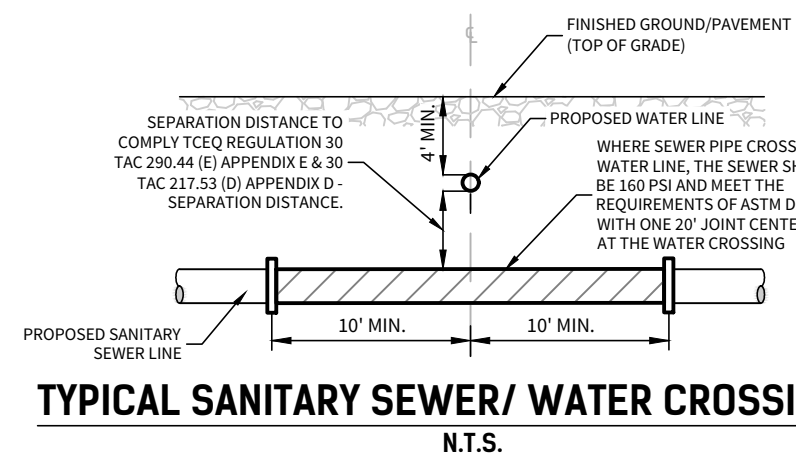
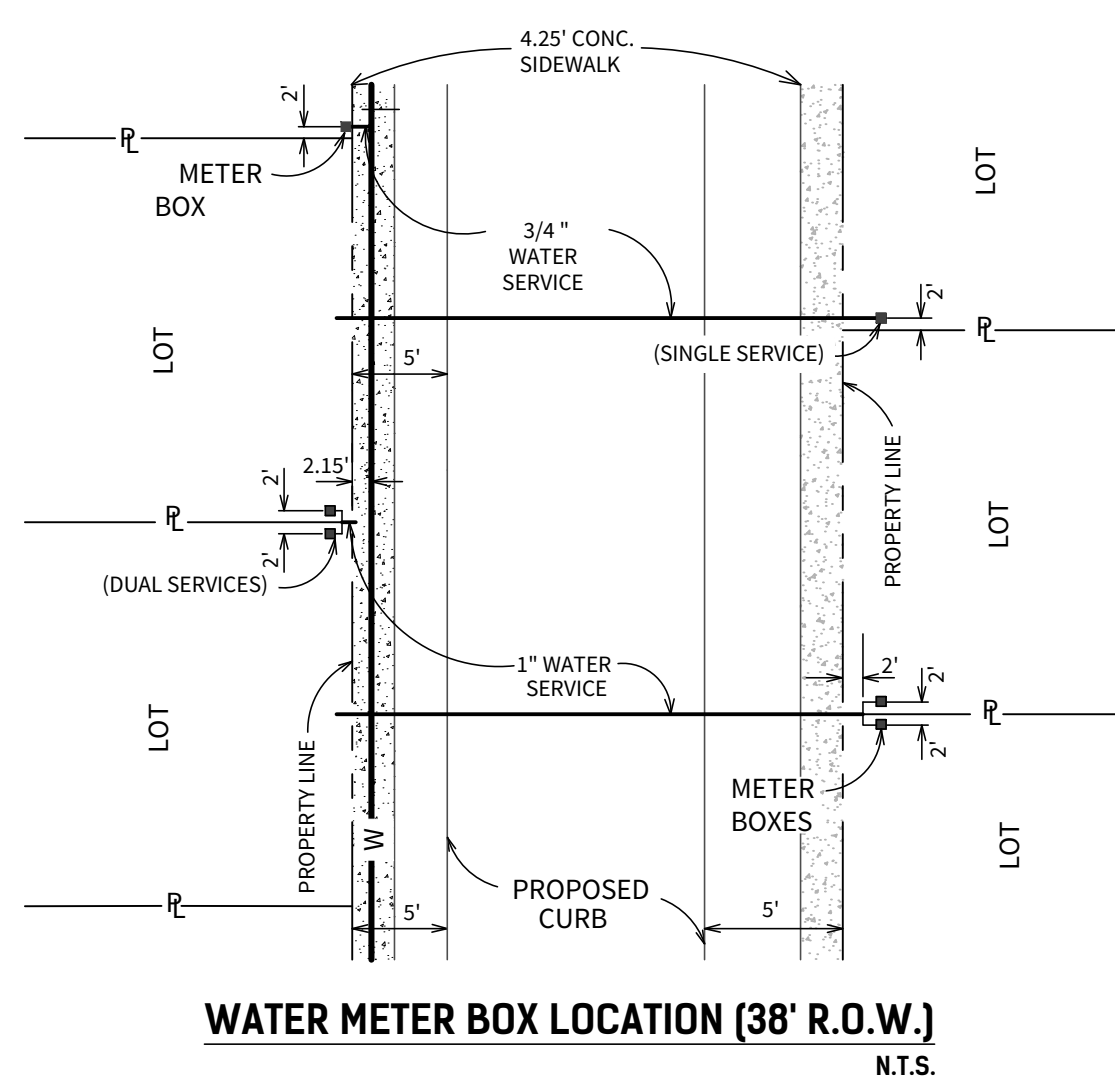
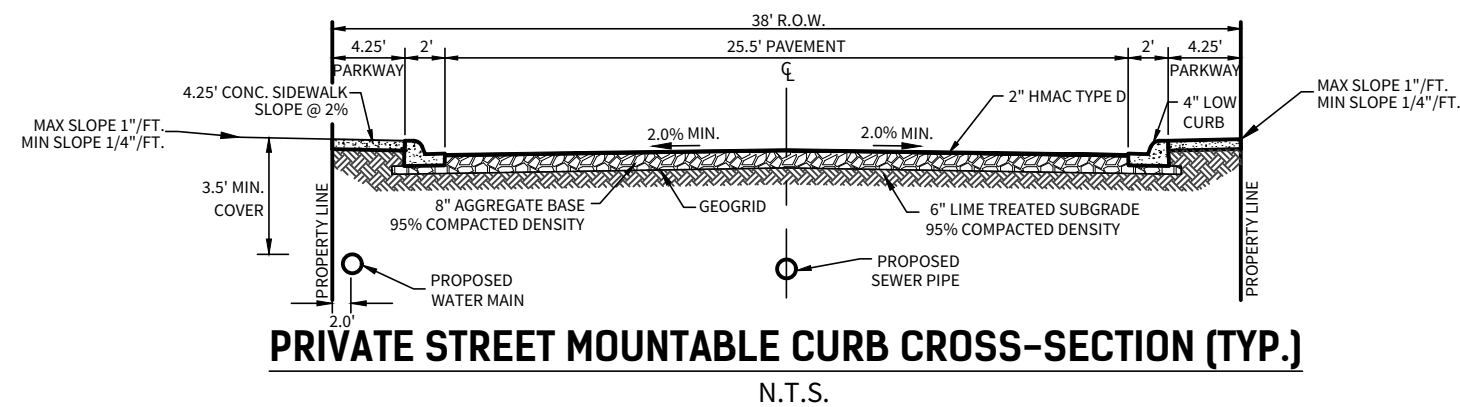
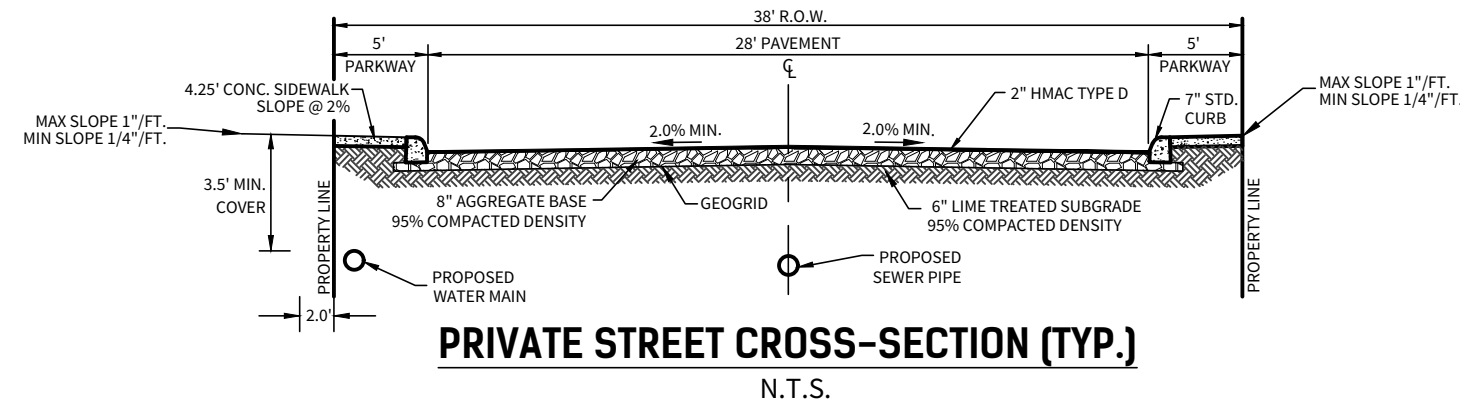
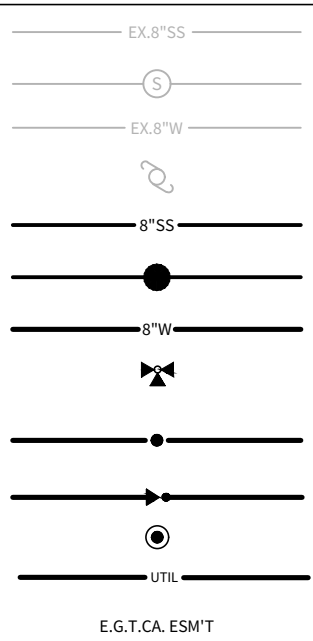
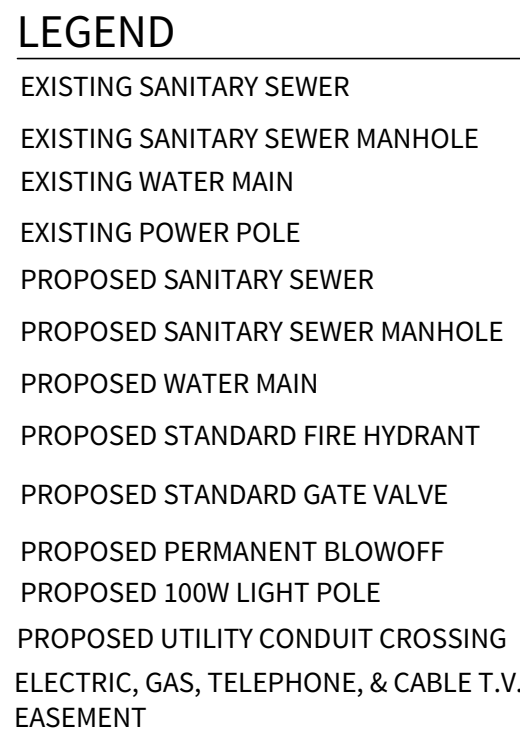
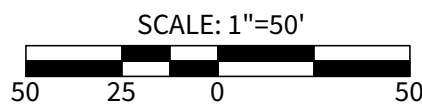


## LOCATION MAP

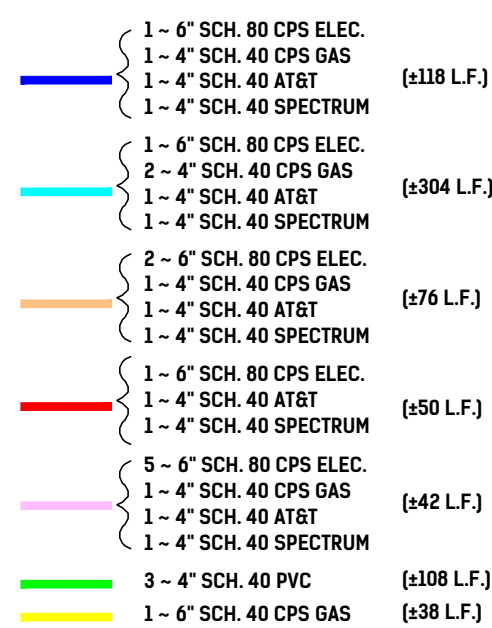
N.T.S.

## DEVELOPER

CENTURY COMMUNITIES  
ATTN: VICTOR BERNAL  
2330 N LOOP 1604 ACCESS ROAD, STE 112  
SAN ANTONIO, TX. 78248  
TEL: (210) 469-3442



## LEGEND



NOTE:

THE LOCATIONS AND DEPTHS OF EXISTING UTILITIES, INCLUDING SERVICE LATERALS AND DRAINAGE STRUCTURES SHOWN ON THE PLANS ARE APPROXIMATE ONLY. THE CONTRACTOR SHALL VERIFY THE EXACT LOCATION AND DEPTHS OF UNDERGROUND UTILITIES AT LEAST 48 HOURS PRIOR TO CONSTRUCTION WHETHER SHOWN ON PLANS OR NOT, AND TO PROTECT THE SAME DURING CONSTRUCTION.

CITY OF LEON VALLEY PUBLIC WORKS	210-681-1232
TEXAS STATE WIDE ONE CALL LOCATOR	1-800-545-6005
CITY PUBLIC SERVICE	"
AT&T	"
SPECTRUM	"
VALERO ENERGY CO.	"

AT&T AND SPECTRUM CABLE LINES TO GO INTO JOINT TRENCH WITH C.P.S. ENERGY  
LOTS WITH CONFLICTING TRANSFORMER / SECONDARY ENCLOSURE ELECTRIC SERVICE AND WATER METER PLACED 5' FROM PROPERTY LINE WHERE THE CONFLICT OCCURS.

\* CONDUIT ONLY TO BE INSTALLED IF:

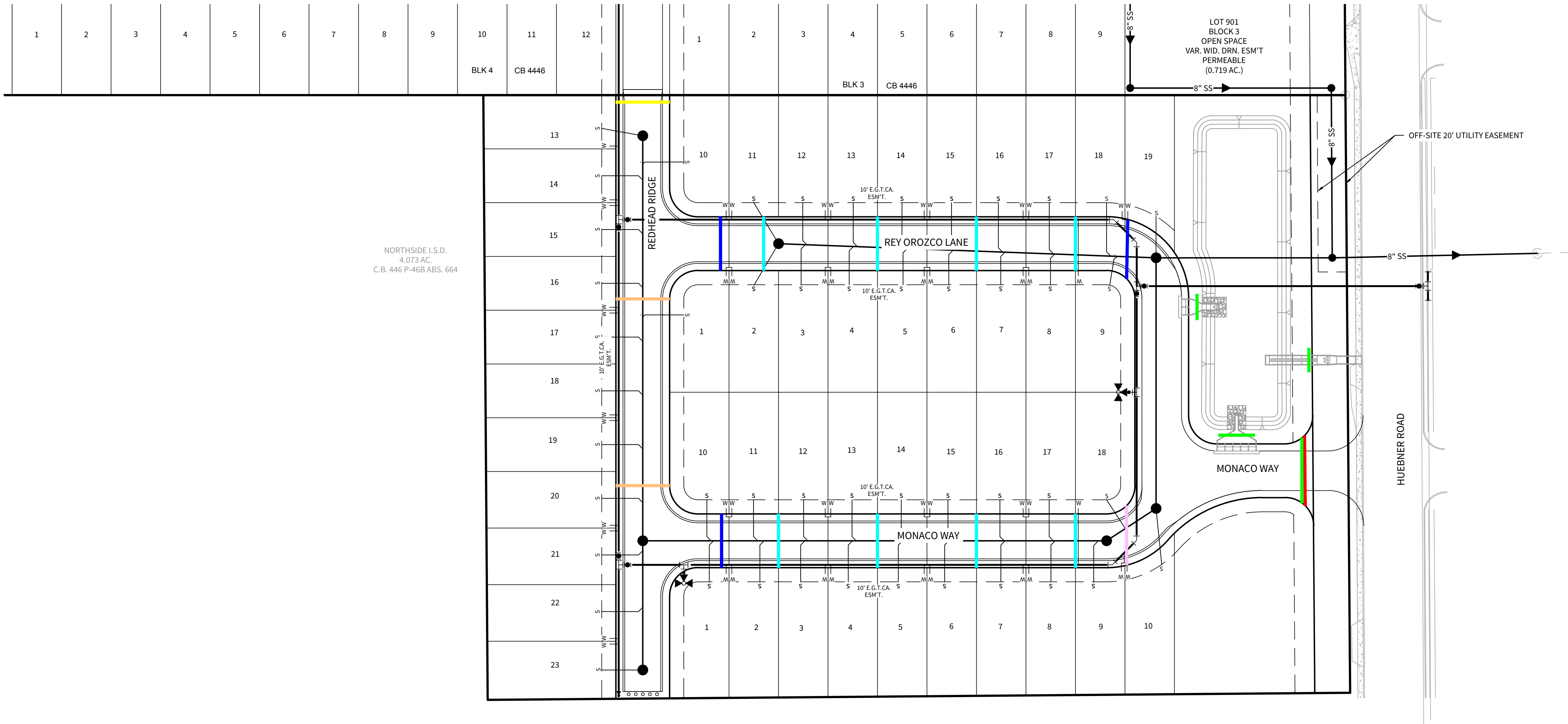
- 1.) STREET BASE AND DRAINAGE COMPLETION PRECEDES CPS UTILITY LINE INSTALLATION.
- 2.) INSTALLATION IS AUTHORIZED BY THE DEVELOPER.

**CAUTION!!!**

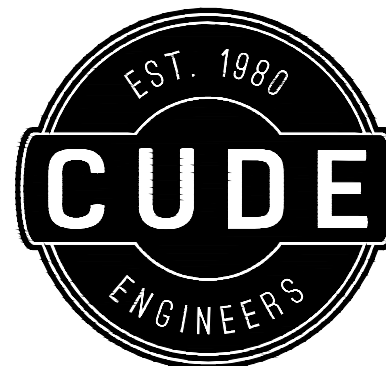
THE CONTRACTOR SHALL BE AWARE THAT UNDERGROUND SANITARY SEWER LINES EXIST WITHIN THIS SITE. IT IS THE RESPONSIBILITY OF THE CONTRACTOR TO HAVE THESE UTILITIES LOCATED PRIOR TO COMMENCING CONSTRUCTION. THE CONTRACTOR SHALL USE EXTREME CAUTION WHEN WORKING IN THIS AREA. ANY DAMAGE DONE TO THESE EXISTING FACILITIES WILL BE THE SOLE RESPONSIBILITY OF THE CONTRACTOR TO REPAIR.

## TRENCH EXCAVATION SAFETY PROTECTION

Contractor and/or Contractor's independently retained employee or structural design/geotechnical/safety/equipment consultant, if any, shall review these plans and available geotechnical information and the anticipated installation site(s) within the project work area in order to implement Contractor's trench excavation safety protection systems, programs and/or procedures for the project described in the contract documents. The Contractor's implementation of these systems, programs and/or procedures shall provide for adequate trench excavation safety protection that comply with as a minimum, OSHA standards for trench excavations. Specifically, Contractor and/or Contractor's independently retained employee or safety consultant shall implement a trench safety program in accordance with OSHA standards governing the presence and activities of individuals working in and around trench excavation.



CUDEENGINEERS.COM



4122 Pond Hill Road, Suite 101  
San Antonio, Texas 78231  
P:(210) 681.2951 F: (210) 523.7111

## POSS LANDING SUBDIVISION PHASE 2

## PHASE 2

# CONDUIT LAYOUT PLAN

DATE  
11/25/2024

**PROJECT NO.**  
03653.005

DRAWN BY  
MAS

CHECKED BY  
KMH

## REVISIONS

1. ....
2. ....
3. ....
4. ....
5. ....
6. ....
7. ....
8. ....

CUDE ENGINEERS

TBPE No. 455  
TBPLS No. 10048500

PLAT NO.

PZ-2024-16

**E-1**

**1 1**

1

REPRODUCTION OF THE ORIGINAL SIGNED AND SEALED PLAN AND/OR ELECTRONIC MEDIA MAY HAVE BEEN INADVERTENTLY ALTERED. CONTRACTOR IS RESPONSIBLE FOR VERIFYING THE SCALE OF THE DOCUMENT AND CONTACTING CUDE ENGINEERS TO VERIFY DISCREPANCIES PRIOR TO CONSTRUCTION.