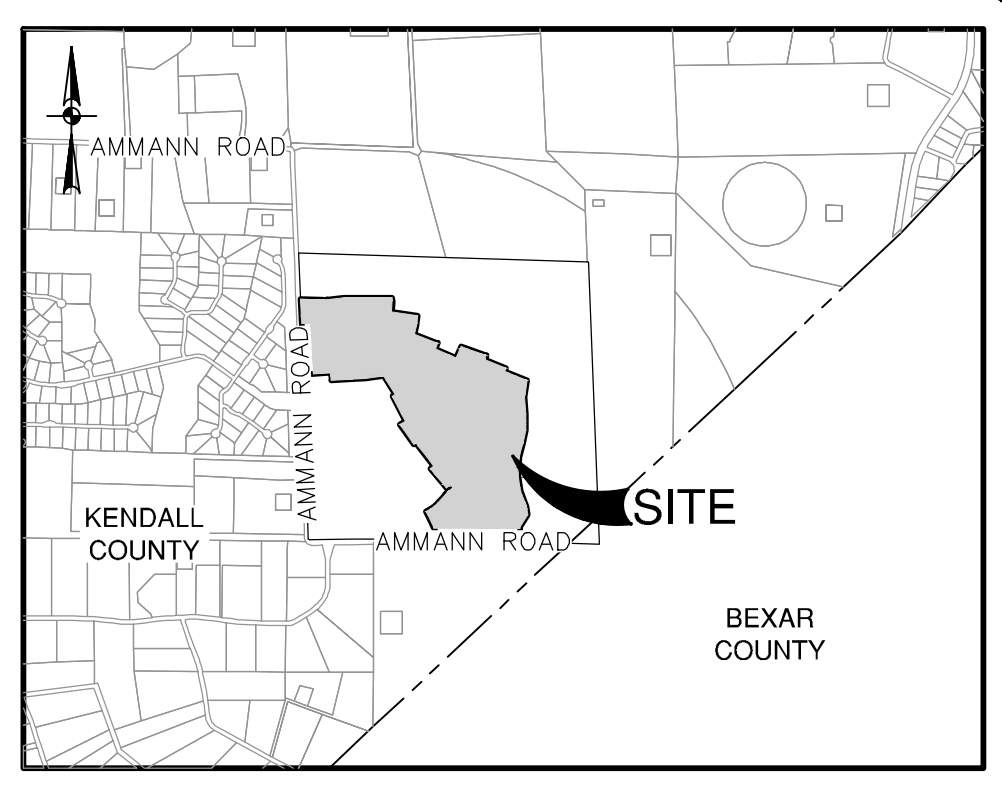


TREE SURVEY SUMMARY				
CLASSIFICATION	TOTAL TREES (#)	REMOVED (#)	SAVED (#)	REQUIRED MITIGATION (# 2.5" TREES)
PROTECTED	336	83	253	83
HERITAGE	168	42	126	126
TOTAL	504	125	379	209

MITIGATION SUMMARY
 256 ~ 2.5" DBH TREES SHALL BE PLANTED WITHIN UNIT 1 LOTS IN TOTAL WITH 4 TREES PLANTED PER LOT ON 64 LOTS.

CANOPY SUMMARY
 PHASE 1 CANOPY=±56.66 ACRES



LOCATION MAP
 NOT-TO-SCALE



LEGEND

- EXEMPT TREES (UNDER 18" OR DEAD)
- PROTECTED TREES REMOVED
- HERITAGE TREES REMOVED
- HERITAGE TREES SAVED
- PROTECTED TREES SAVED
- POST OAK SUBDIVISION BOUNDARY
- PROJECT LIMITS
- MATCH LINE

GENERAL NOTES

- NOTES:
- PROJECT IS SUBJECT TO THE POST OAK DEVELOPMENT AGREEMENT
 - 100% OF TREES 18" TO 24" DBH (PROTECTED CLASS) WITHIN THE TREE SURVEY AREA SHALL BE MITIGATED AT A RATIO OF ONE 2.5" DBH TREE PLANTED FOR EVERY ONE PROTECTED TREE REMOVED
 - 100% OF TREES 24" DBH AND LARGER (HERITAGE CLASS) WITHIN THE TREE SURVEY AREA SHALL BE MITIGATED AT A RATIO OF THREE 2.5" DBH TREES PLANTED FOR EVERY ONE PROTECTED TREE REMOVED
 - TREES LOCATED OUTSIDE THE LIMITS OF THE TREE SURVEY WILL REMAIN UNDISTURBED. THE ONLY TREES ALLOWED TO BE REMOVED ARE THE TREES LABELED IN THIS PLAN.
 - SITE VEGETATION DESCRIPTION: VEGETATION ON THE SITE RANGES FROM OPEN AREAS TO DENSELY VEGETATED AREAS, INCLUDING BRUSH, MESQUITE, CEDAR, OAKS AND ELMS.
 - VEGETATION SHOWN AS NEITHER PRESERVED NOR REMOVED IS ASSUMED TO BE OF INSIGNIFICANT SIZE.
 - TREES PLANTED FOR MITIGATION SHALL BE A MINIMUM OF 2.5" DBH.
 - EXEMPT TREES DEAD OR TREES UNDER 18" ARE NOT MITIGATED, IF REMOVED, AND MAY BE REMOVED IF WITHIN THE CONSTRUCTION LIMITS.

TREE PRESERVATION NOTES

- ALL EXISTING TREES DENOTED ON THIS PLAN TO BE PRESERVED AS SHOWN AND PROTECTED AT THE ROOT PROTECTED ZONE (RPZ). THE RPZ SHALL BE DETERMINED BY TREE SIZE (RECOMMENDED 1' RADIUS FROM TRUNK FOR EVERY 1" DIAMETER OF TRUNK AT 4.5' FROM GROUND) WITH A MINIMUM 5' DIAMETER FROM THE TRUNK.
- A (CHAIN LINK OR ORANGE MESH FENCE) BARRIER AROUND THE RPZ SHALL BE ERECTED AND MAINTAINED UNTIL CONSTRUCTION IS COMPLETED.
- RPZ SHALL BE SUSTAINED IN A NATURAL STATE AND SHALL BE FREE FROM VEHICULAR OR MECHANICAL TRAFFIC; NO FILL, EQUIPMENT, LIQUIDS, OR CONSTRUCTION DEBRIS SHALL BE PLACED INSIDE THE PROTECTIVE ZONE.
- THE RPZ SHALL BE COVERED WITH MULCH TO REDUCE MOISTURE STRESS.
- ANY DAMAGE DONE TO EXISTING TREE CROWNS OR ROOT SYSTEMS SHALL BE REPAIRED IMMEDIATELY. ALL WOUNDS TO TREES WILL BE PAINTED WITH PRUNING PAINT OR SPRAY PAINT WITHIN 30 MINUTES AFTER DAMAGE. ROOTS EXPOSED DURING CONSTRUCTION OPERATIONS WILL BE CUT CLEANLY.
- THE PROPOSED FINISHED GRADE AND ELEVATION OF LAND WITHIN THE ROOT PROTECTION ZONE OF ANY TREES TO BE PRESERVED SHALL NOT BE RAISED OR LOWERED MORE THAN 3". WELLING AND RETAINING METHODS ARE ALLOWED OUTSIDE THE RPZ.
- THE RPZ SHALL REMAIN PERVIOUS, I.E. GROUND COVER OR TURF AT COMPLETION OF LANDSCAPE DESIGN.

NO.	REVISION	DATE

This document is released for INTERIM REVIEW purposes ONLY under the authorization of Matthew Gestweid, P.E. #118951 on 1/27/26. This document is not to be used for CONSTRUCTION.

PAPE-DAWSON
 2000 NW LOOP 410 | SAN ANTONIO, TX 78213 | 210.375.9000
 TEXAS ENGINEERING FIRM #470 | TEXAS SURVEYING FIRM #10028800

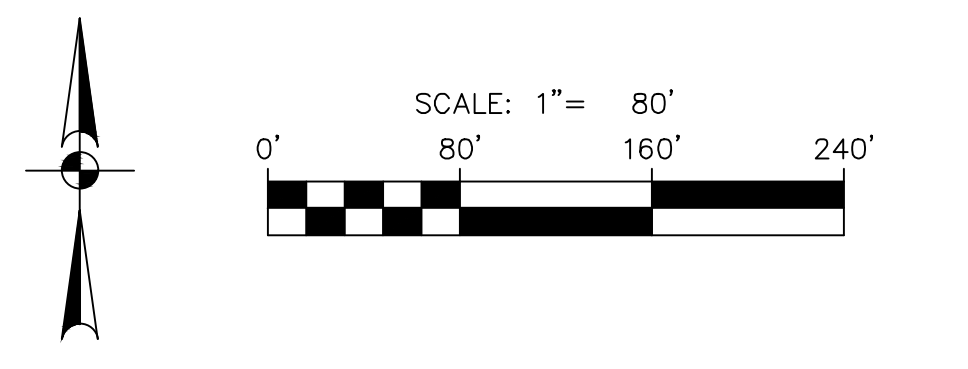
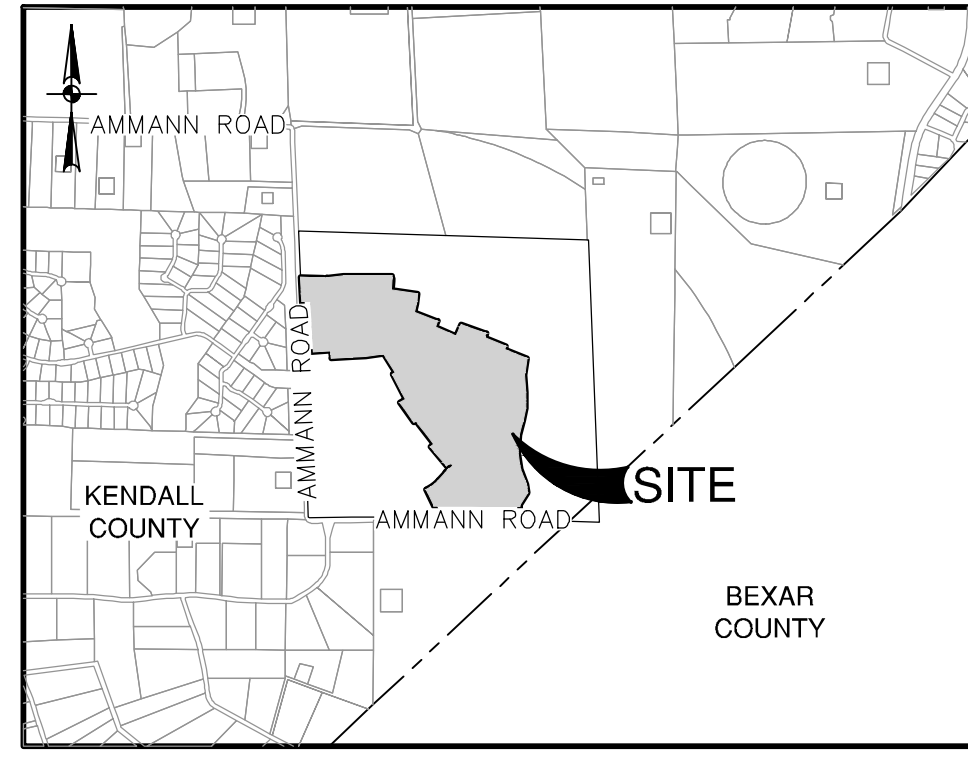
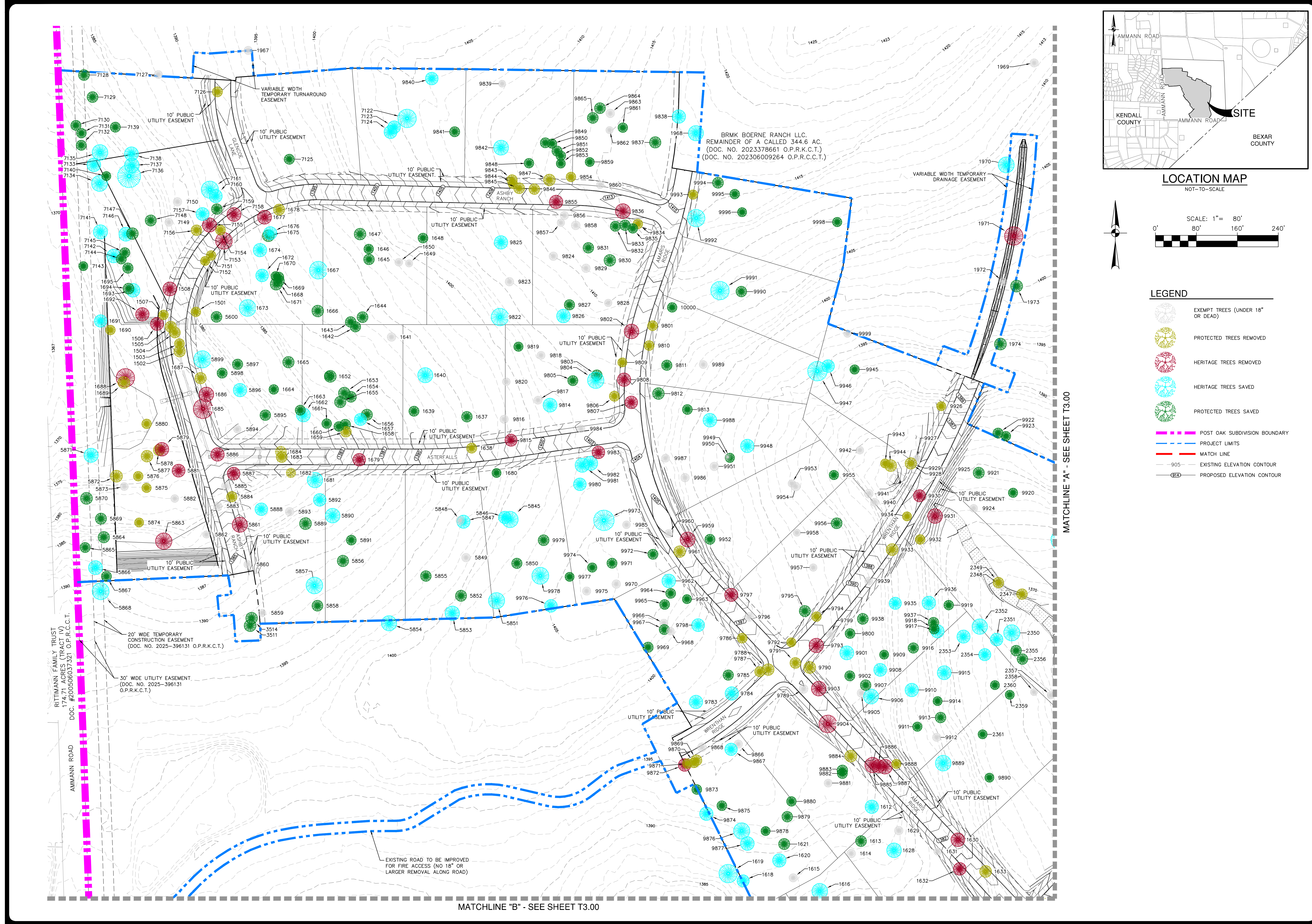
POST OAK PHASE 1
 CITY OF FAIR OAKS RANCH, TEXAS
 TREE PRESERVATION PLAN OVERALL MAP

PLAT NO.	N/A
JOB NO.	13903-02
DATE	JANUARY 2026
DESIGNER	DL
CHECKED	WH DRAWN SR
SHEET	T1.00

Date: February 5, 2026, 2:04 PM - User ID: dburrows
 File: P:\19\03\02\Design\Civil\Trees Master Tree Plan 1390302.dwg

THIS DOCUMENT HAS BEEN PRODUCED FROM MATERIAL THAT HAS STORED AND/OR TRANSMITTED ELECTRONICALLY AND MAY HAVE BEEN INADVERTENTLY ALTERED. RELY ONLY ON FINAL HARDCOPY MATERIALS BEARING THE CONSULTANT'S ORIGINAL SIGNATURE AND SEAL. AERIAL IMAGERY PROVIDED BY GOOGLE/UNLESS OTHERWISE NOTED. Imagery © 2016, CAPCOO, Digital Globe, Texas Orthography Program, USDA Farm Service Agency.

Date: February 5, 2026, 2:04 PM - User ID: dburrows
 File: P:\39\03\02\Design\Civil\Trees\Master_Tree_Plan_1390302.dwg



- LEGEND**
- EXEMPT TREES (UNDER 18" OR DEAD)
 - PROTECTED TREES REMOVED
 - HERITAGE TREES REMOVED
 - HERITAGE TREES SAVED
 - PROTECTED TREES SAVED
 - POST OAK SUBDIVISION BOUNDARY
 - PROJECT LIMITS
 - MATCH LINE
 - 905 EXISTING ELEVATION CONTOUR
 - PROPOSED ELEVATION CONTOUR

NO.	REVISION	DATE

This document is released for INTERIM REVIEW purposes ONLY under the authorization of Matthew Gestweid, P.E. #118661 on 1/27/26. This document is not to be used for CONSTRUCTION.

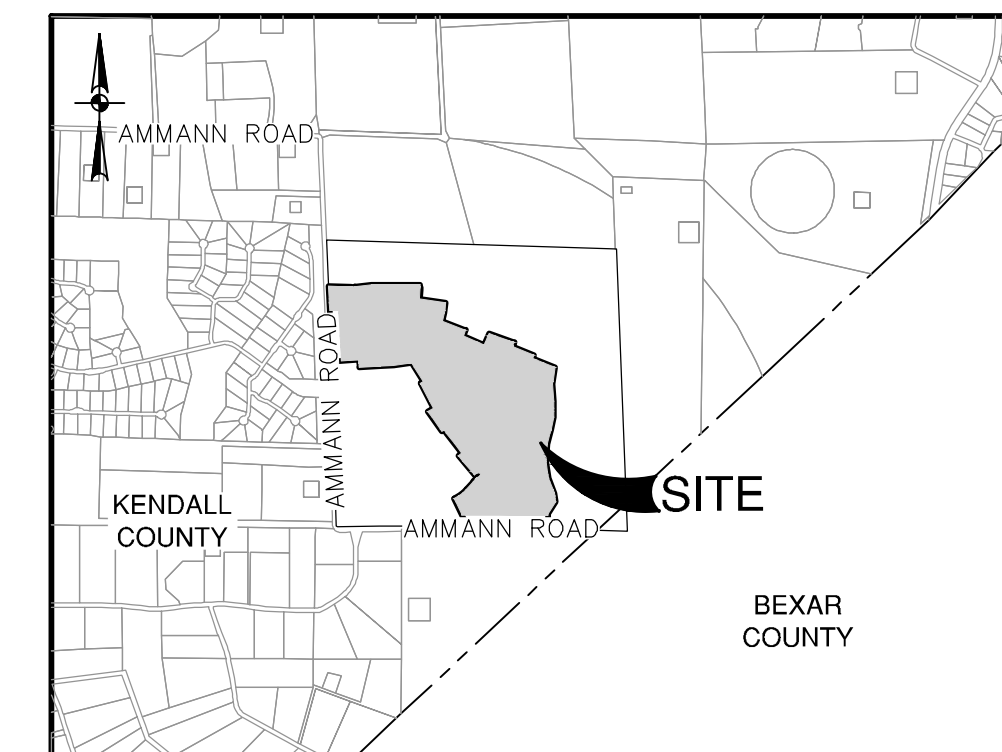
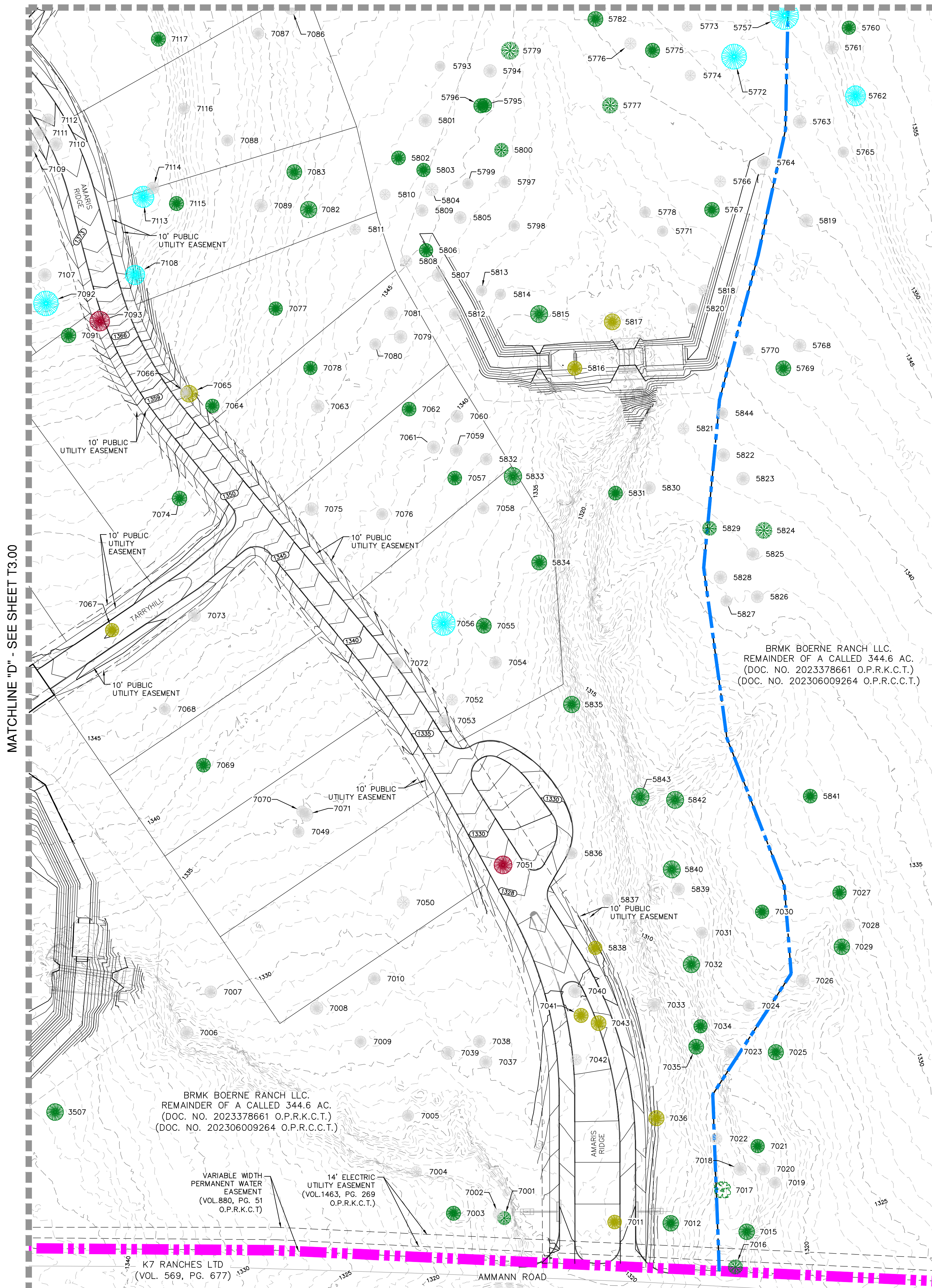
PAPE-DAWSON
 2000 NW LOOP 410 | SAN ANTONIO, TX 78213 | 210.375.0000
 TEXAS ENGINEERING FIRM #470 | TEXAS SURVEYING FIRM #10028800

POST OAK PHASE 1
 CITY OF FAIR OAKS RANCH, TEXAS
 TREE PRESERVATION PLAN

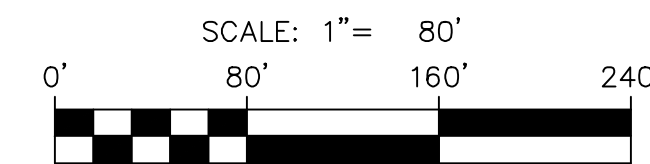
PLAT NO.	N/A
JOB NO.	13903-02
DATE	JANUARY 2026
DESIGNER	DL
CHECKED	WH DRAWN SR
SHEET	T2.00

THIS DOCUMENT HAS BEEN PRODUCED FROM MATERIAL THAT WAS STORED AND/OR TRANSMITTED ELECTRONICALLY AND MAY HAVE BEEN INADVERTENTLY ALTERED. RELY ONLY ON FINAL HARDCOPY MATERIALS BEARING THE CONSULTANT'S ORIGINAL SIGNATURE AND SEAL. AERIAL IMAGERY PROVIDED BY GOOGLE/UNLESS OTHERWISE NOTED. Imagery © 2016, CAPOCO, Digital Globe, Texas Orthographic Program, USDA Farm Service Agency.

MATCHLINE "C" - SEE SHEET T3.00



LOCATION MAP
NOT-TO-SCALE



LEGEND

- EXEMPT TREES (UNDER 18" OR DEAD)
- PROTECTED TREES REMOVED
- HERITAGE TREES REMOVED
- HERITAGE TREES SAVED
- PROTECTED TREES SAVED
- POST OAK SUBDIVISION BOUNDARY
- PROJECT LIMITS
- MATCH LINE
- 905 - EXISTING ELEVATION CONTOUR
- 615 - PROPOSED ELEVATION CONTOUR

BRMK BOERNE RANCH LLC.
REMAINDER OF A CALLED 344.6 AC.
(DOC. NO. 2023378661 O.P.R.K.C.T.)
(DOC. NO. 202306009264 O.P.R.C.C.T.)

MATCHLINE "D" - SEE SHEET T3.00

NO.	REVISION	DATE

This document is released for INTERIM REVIEW purposes ONLY under the authorization of Matthew Gestweid, P.E. #18861 on 1/27/26. This document is not to be used for CONSTRUCTION.

PAPE - DAWSON
2000 NW LOOP 410 | SAN ANTONIO, TX 78213 | 210.375.0000
TEXAS ENGINEERING FIRM #470 | TEXAS SURVEYING FIRM #10028800

POST OAK PHASE 1
CITY OF FAIR OAKS RANCH, TEXAS
TREE PRESERVATION PLAN

PLAT NO.	N/A
JOB NO.	13903-02
DATE	JANUARY 2026
DESIGNER	DL
CHECKED	WH
DRAWN	SR
SHEET	T4.00

Date: February 5, 2026, 2:05 PM - User ID: dbarrows
File: P:\39\03\02\Design\Civil\Trees\Master_Tree_Plan_1390302.dwg

THIS DOCUMENT HAS BEEN PRODUCED FROM MATERIAL THAT WAS STORED AND/OR TRANSMITTED ELECTRONICALLY AND MAY HAVE BEEN INADVERTENTLY ALTERED. RELY ONLY ON FINAL HARD COPY MATERIALS BEARING THE CONSULTANT'S ORIGINAL SIGNATURE AND SEAL. AERIAL IMAGERY PROVIDED BY GOOGLE/UNLESS OTHERWISE NOTED. Imagery © 2016/CAPCO/2016/Global Texas Orthography Program, USDA Farm Service Agency.

HERITAGE & REMOVED TREE TABLE							
POINT #	NORTHING	EASTING	POINTS			SIZE CLASS	CONDITION
			SPECIES	SIZE	MULTI-TRUNK		
1506	13832777.84	2087485.48	LOAK	25.5	N	Heritage	REMOVED
1508	13832846.21	2087510.63	LOAK	27.5	N	Heritage	REMOVED
1630	13831770.17	2089050.27	LOAK	27	N	Heritage	REMOVED
1632	13831713.34	2089054.05	LOAK	25	N	Heritage	REMOVED
1636	13831538.06	2089068.19	LOAK	29	N	Heritage	REMOVED
1677	13832986.27	2087695.66	LOAK	27.5	N	Heritage	REMOVED
1679	13832512.60	2087880.75	LOAK	25	Y 18X14.5	Heritage	REMOVED
1685	13832612.02	2087575.45	LOAK	38.5	N	Heritage	REMOVED
1686	13832640.11	2087582.07	LOAK	29	N	Heritage	REMOVED
1688	13832672.60	2087423.76	LOAK	36.5	Y 20.5X20X12	Heritage	REMOVED
1692	13832796.65	2087456.88	LOAK	26.5	Y 23X7	Heritage	REMOVED
1971	13832949.59	2089159.48	LOAK	36.5	N	Heritage	REMOVED
5861	13832385.68	2087647.31	LOAK	30	Y 25X10	Heritage	REMOVED
5863	13832353.57	2087498.65	LOAK	32.5	N	Heritage	REMOVED
5879	13832533.03	2087495.14	LOAK	27	N	Heritage	REMOVED
5881	13832491.25	2087527.72	LOAK	25.5	N	Heritage	REMOVED
5886	13832522.90	2087603.74	LOAK	26.5	N	Heritage	REMOVED
5887	13832485.62	2087635.27	LOAK	25	N	Heritage	REMOVED
7051	13830514.93	2086970.48	LOAK	24	N	Heritage	REMOVED
7093	13831238.01	2089334.35	LOAK	26	Y 19X8X7	Heritage	REMOVED
7153	13832940.14	2087616.23	LOAK	33	N	Heritage	REMOVED
7155	13832971.03	2087588.04	LOAK	28	N	Heritage	REMOVED
7158	13832991.62	2087635.96	LOAK	27.5	N	Heritage	REMOVED
7256	13830387.05	2088192.08	LOAK	24	N	Heritage	REMOVED
9793	13832149.72	2088773.73	LOAK	28.5	N	Heritage	REMOVED
9797	13832248.57	2088607.54	LOAK	26	N	Heritage	REMOVED
9802	13832763.18	2088412.62	LOAK	29	Y 23X12	Heritage	REMOVED
9807	13832624.64	2088412.20	LOAK	25	N	Heritage	REMOVED
9808	13832669.00	2088398.06	LOAK	26.5	N	Heritage	REMOVED
9815	13832550.75	2088177.23	LOAK	24	N	Heritage	REMOVED
9836	13832998.12	2088395.78	LOAK	29.5	Y 23.5X12	Heritage	REMOVED
9855	13833016.20	2088265.27	LOAK	26.5	Y 18X17	Heritage	REMOVED
9872	13831916.28	2088516.46	LOAK	25	Y 15X13X7	Heritage	REMOVED
9885	13831916.14	2088883.64	LOAK	30.5	N	Heritage	REMOVED
9886	13831914.01	2088895.33	LOAK	25.5	N	Heritage	REMOVED
9887	13831912.93	2088907.98	LOAK	29	Y 20X18.5	Heritage	REMOVED
9903	13832065.40	2088778.46	LOAK	29	Y 13X12X10.5X10	Heritage	REMOVED
9904	13831996.43	2088796.19	LOAK	35	Y 22X14X12.5	Heritage	REMOVED
9930	13832442.18	2088975.29	LOAK	24	Y 18.5X11.5	Heritage	REMOVED
9931	13832402.49	2089005.72	LOAK	29	N	Heritage	REMOVED
9959	13832356.79	2088522.22	LOAK	29.5	N	Heritage	REMOVED
9983	13832526.94	2088347.98	LOAK	25	N	Heritage	REMOVED
HERITAGE REMOVED TREE TOTAL=42							

HERITAGE & SAVED TREE TABLE							
POINT #	NORTHING	EASTING	POINTS			SIZE CLASS	CONDITION
			SPECIES	SIZE	MULTI-TRUNK		
1607	13831534.22	2089031.54	LOAK	29.5	Y 10X10.5X10X9.5X9.5	Heritage	SAVED
1608	13831540.41	2088992.13	LOAK	30.5	Y 14.5X13.5X10X9	Heritage	SAVED
1611	13831603.63	2089011.06	LOAK	25	Y 14X11.5X10.5	Heritage	SAVED
1612	13831834.58	2088882.14	LOAK	26.5	Y 21X11.5	Heritage	SAVED
1616	13831669.66	2088780.38	LOAK	31	Y 18X9X7X6X4	Heritage	SAVED
1618	13831689.93	2088630.70	LOAK	24	Y 10.5X10.5X9X8	Heritage	SAVED
1619	13831704.08	2088601.47	LOAK	36.5	Y 14X13X12.5X12X8	Heritage	SAVED
1620	13831729.82	2088701.44	LOAK	26.5	Y 20X13	Heritage	SAVED
1623	13831488.32	2088703.19	LOAK	28	N	Heritage	SAVED
1627	13831608.11	2088859.58	LOAK	25	N	Heritage	SAVED
1628	13831749.57	2088925.52	LOAK	29	Y 17.5X13X10	Heritage	SAVED
1640	13832677.71	2088009.70	LOAK	30	N	Heritage	SAVED
1657	13832591.28	2087883.04	LOAK	24	N	Heritage	SAVED
1662	13832600.03	2087771.50	LOAK	27.5	Y 20X15.5	Heritage	SAVED
1667	13832882.85	2087800.82	LOAK	35	Y 24.5X12.5X9	Heritage	SAVED
1672	13832872.50	2087690.85	LOAK	25	N	Heritage	SAVED
1673	13832809.03	2087662.58	LOAK	33	Y 23X20	Heritage	SAVED
1674	13832922.00	2087686.72	LOAK	26.5	Y 22.5X8	Heritage	SAVED
1676	13832955.05	2087706.75	LOAK	26	N	Heritage	SAVED
1681	13832472.84	2087794.18	LOAK	30.5	Y 24X13	Heritage	SAVED
1691	13832783.62	2087375.25	LOAK	27	Y 17X15.5	Heritage	SAVED
1693	13832843.60	2087438.82	LOAK	24.5	N	Heritage	SAVED
1968	13833150.43	2088538.40	LOAK	30	N	Heritage	SAVED
1970	13833088.47	2089144.84	LOAK	31.5	Y 23.5X16.5	Heritage	SAVED
2301	13831810.85	2090339.31	LOAK	26	N	Heritage	SAVED
2310	13832119.01	2090265.45	LOAK	27.5	Y 19X17.5	Heritage	SAVED
2328	13832450.69	2089574.65	BJO	24	Y 17X14	Heritage	SAVED
2337	13832280.82	2089396.59	LOAK	27	N	Heritage	SAVED
2338	13832276.24	2089361.27	LOAK	28	N	Heritage	SAVED
2341	13832359.51	2089303.36	LOAK	25	N	Heritage	SAVED
2342	13832356.20	2089252.38	LOAK	41	Y 24X21X13	Heritage	SAVED
2350	13832174.42	2089155.63	LOAK	32	N	Heritage	SAVED
2351	13832161.30	2089125.95	LOAK	25	N	Heritage	SAVED
2352	13832186.59	2089093.01	LOAK	30.5	Y 25X11	Heritage	SAVED
2353	13832167.08	2089061.29	LOAK	26	N	Heritage	SAVED
2354	13832131.80	2089102.89	LOAK	24	N	Heritage	SAVED
2364	13831923.95	2089391.00	LOAK	28	N	Heritage	SAVED
2367	13831950.94	2089576.78	LOAK	27	N	Heritage	SAVED
2374	13832063.85	2090046.04	LOAK	24	N	Heritage	SAVED
2375	13832063.54	2090054.55	LOAK	26.5	N	Heritage	SAVED
2376	13832068.48	2090057.44	LOAK	25	N	Heritage	SAVED
3503	13830545.51	2089046.79	LOAK	25.5	N	Heritage	REMOVED
5753	13831741.47	2090247.56	LOAK	29	N	Heritage	SAVED
5755	13831720.68	2090285.26	LOAK	29.5	Y 21.5X16.5	Heritage	SAVED
5756	13831663.23	2090216.01	LOAK	30	N	Heritage	SAVED
5757	13831644.58	2090244.55	LOAK	37.5	Y 13.5X13X11.5X11	Heritage	SAVED
5758	13831668.22	2090294.83	LOAK	28.5	N	Heritage	SAVED
5759	13831673.17	2090306.14	LOAK	28.5	Y 23.5X10.5	Heritage	SAVED
5762	13831537.70	2090338.85	LOAK	27	N	Heritage	SAVED
5772	13831589.88	2090177.51	LOAK	33.5	Y 23.5X20	Heritage	SAVED
5783	13831684.41	2090001.87	LOAK	30.5	N	Heritage	SAVED
5845	13832395.83	2088175.26	LOAK	32.2	Y 17.2X16.5X13.5	Heritage	SAVED
5846	13832399.83	2088164.98	LOAK	24.5	N	Heritage	SAVED
5847	13832391.50	2088084.25	LOAK	26	N	Heritage	SAVED
5851	13832237.19	2088148.96	LOAK	32	Y 17X15.5X14.5	Heritage	SAVED
5853	13832212.69	2088062.46	LOAK	28.5	N	Heritage	SAVED
5854	13832193.08	2087938.88	LOAK	30	N	Heritage	SAVED
5857	13832266.91	2087793.05	LOAK	33	N	Heritage	SAVED
5866	13832301.79	2087365.24	LOAK	27.5	N	Heritage	SAVED
5868	13832255.58	2087375.46	ROAK	33.5	Y 16X14X10.5X10.5	Heritage	SAVED
5871	13832521.18	2087356.77	LOAK	28	Y 19.5X17.5	Heritage	SAVED
5888	13832415.84	2087689.32	LOAK	25	N	Heritage	SAVED
5890	13832403.34	2087828.75	LOAK	29	Y 20.5X17	Heritage	SAVED
5892	13832434.13	2087803.47	LOAK	25	N	Heritage	SAVED
5896	13832648.58	2087647.70	LOAK	26.5	N	Heritage	SAVED
5899	13832708.63	2087574.28	LOAK	34	N	Heritage	SAVED
7045	13830919.44	2089070.90	LOAK	26.5	N	Heritage	SAVED
7056	13830835.79	2089791.39	LOAK	31.5	Y 22.5X18	Heritage	SAVED
7092	13831261.64	2089262.92	LOAK	33	Y 24X18	Heritage	SAVED
7098	13831225.16	2089033.16	LOAK	24.5	Y 14X12.5X8.5	Heritage	SAVED
7108	13831299.45	2089381.41	LOAK	26	N	Heritage	SAVED
7113	13831403.35	2089392.31	LOAK	28.5	Y 15X15X12	Heritage	SAVED
7122	13833179.32	2087974.14	LOAK	36.5	N	Heritage	SAVED
7123	13833162.21	2087948.80	LOAK	25	N	Heritage	SAVED
7124	13833152.57	2087941.75	LOAK	25.5	N	Heritage	SAVED
7133	13833088.61	2087362.17	LOAK	27	N	Heritage	SAVED
7134	13833052.28	2087373.29	LOAK	31.5	N	Heritage	SAVED
7135	13833112.81	2087374.17	LOAK	31	N	Heritage	SAVED
7136	13833066.68	2087430.97	LOAK	45.5	Y 31X29	Heritage	SAVED
7137	13833087.40	2087436.35	LOAK	29	N	Heritage	SAVED

HERITAGE & SAVED TREE TABLE							
POINT #	NORTHING	EASTING	POINTS			SIZE CLASS	CONDITION
			SPECIES	SIZE	MULTI-TRUNK		
7138	13833110.11	2087435.58	ROAK	27.5	Y 19X17	Heritage	SAVED
7141	13832957.59	2087375.00	LOAK	28	N	Heritage	SAVED
7142	13832910.53	2087400.92	LOAK	27	N	Heritage	SAVED
7146	13832953.11	2087424.70	LOAK	27.5	N	Heritage	SAVED
7157	13832992.56	2087574.45	LOAK	25.5	N	Heritage	SAVED
7160	13833027.50	2087600.15	LOAK	26	N	Heritage	SAVED
7161	13833040.05	2087588.84	LOAK	34	N	Heritage	SAVED
9783	13832039.43	2088538.58	LOAK	26.5	N	Heritage	SAVED
9784	13832055.98	2088608.53	LOAK	26.5	N	Heritage	SAVED
9798	13832189.44	2088542.75	LOAK	25.5	Y 13.5X12.5X11.5	Heritage	SAVED
9804	13832667.84	2088342.71	LOAK	32.5	N	Heritage	SAVED
9814	13832619.23	2088253.49	LOAK	27.5	Y 18.5X18	Heritage	SAVED
9822	13832791.28	2088155.51	LOAK	34.5	Y 26X17.5	Heritage	SAVED
9825	13832937.15	2088157.64	LOAK	26.5	Y 14.5X14.5X10	Heritage	SAVED
9826	13832793.31	2088279.65	LOAK	27	Y 11.5X11X10.5X10	Heritage	SAVED
9838	13833182.99	2088505.17	LOAK	26.5	N	Heritage	SAVED
9840	13833257.17	2088022.40	LOAK	25	N	Heritage	SAVED
9842	13833122.15	2088157.7					

PROTECTED & REMOVED TREE TABLE							
POINTS							
POINT #	NORTHING	EASTING	SPECIES	SIZE	MULTI-TRUNK	SIZE CLASS	CONDITION
1501	13832801.35	2087561.47	LOAK	19	Y 13X12.5	Protected	REMOVED
1502	13832724.38	2087529.76	LOAK	22.5	N	Protected	REMOVED
1503	13832739.43	2087529.38	LOAK	19.5	N	Protected	REMOVED
1504	13832761.01	2087520.45	LOAK	21.5	N	Protected	REMOVED
1505	13832772.40	2087512.45	LOAK	22	N	Protected	REMOVED
1507	13832795.46	2087498.18	LOAK	19	Y 12.5X7X6.5	Protected	REMOVED
1633	13831708.27	2089104.45	LOAK	23.5	Y 14X11X8.5	Protected	REMOVED
1638	13832535.28	2088100.37	LOAK	20	N	Protected	REMOVED
1659	13832567.15	2087854.72	LOAK	21	N	Protected	REMOVED
1678	13833001.10	2087723.98	LOAK	22	Y 15X14.5	Protected	REMOVED
1682	13832486.85	2087747.19	CELM	19	N	Protected	REMOVED
1683	13832517.66	2087729.16	LOAK	21.5	N	Protected	REMOVED
1684	13832528.12	2087727.57	CELM	22.5	N	Protected	REMOVED
1687	13832671.89	2087570.73	LOAK	22.5	Y 17.5X10	Protected	REMOVED
1689	13832663.30	2087420.69	LOAK	23.5	Y 17.5X12	Protected	REMOVED
1690	13832765.95	2087394.62	LOAK	19	N	Protected	REMOVED
2318	13832312.60	2089963.80	LOAK	18	N	Protected	REMOVED
2320	13832322.02	2089877.75	LOAK	21	N	Protected	REMOVED
2321	13832336.95	2089838.00	LOAK	21	N	Protected	REMOVED
2347	13832250.02	2089175.58	LOAK	21	N	Protected	REMOVED
2349	13832272.56	2089129.49	LOAK	21	Y 9X8X8X8	Protected	REMOVED
3505	13830512.28	2089103.64	LOAK	23	N	Protected	REMOVED
3509	13830403.43	2089082.12	LOAK	19.5	N	Protected	REMOVED
3510	13830371.44	2089048.83	LOAK	21	N	Protected	REMOVED
5790	13831813.27	2089650.02	LOAK	21.5	N	Protected	REMOVED
5816	13831175.60	2089965.85	POAK	19	Y 13.5X11.5	Protected	REMOVED
5817	13831237.13	2090015.67	ROAK	21.5	Y 11.5X10X10	Protected	REMOVED
5838	13830404.60	2089993.06	LOAK	18	Y 12X12	Protected	REMOVED
5872	13832480.40	2087406.37	LOAK	23.5	N	Protected	REMOVED
5874	13832390.03	2087450.60	LOAK	18	Y 12.5X11	Protected	REMOVED
5875	13832457.52	2087465.09	LOAK	18.5	N	Protected	REMOVED
5876	13832480.37	2087448.82	LOAK	19	Y 13X12	Protected	REMOVED
5877	13832519.53	2087465.97	LOAK	23	N	Protected	REMOVED
5878	13832531.53	2087489.37	LOAK	22	N	Protected	REMOVED
5880	13832582.64	2087465.26	LOAK	19	N	Protected	REMOVED
5884	13832440.30	2087631.66	LOAK	20.5	Y 14.5X12	Protected	REMOVED
7011	13830039.99	2090018.72	POAK	18.5	Y 10X9X8	Protected	REMOVED
7036	13830178.06	2090074.38	POAK	20.5	Y 11.5X10.5X8	Protected	REMOVED
7041	13830314.70	2089974.19	LOAK	19	N	Protected	REMOVED
7043	13830304.48	2089997.42	LOAK	20	Y 16X8	Protected	REMOVED
7065	13831141.59	2089453.22	LOAK	22.5	Y 16X13	Protected	REMOVED
7067	13830827.14	2089350.84	LOAK	18	Y 10X9.5X7	Protected	REMOVED
7126	13833231.21	2087603.56	LOAK	20	N	Protected	REMOVED
7151	13832911.59	2087591.17	LOAK	19	N	Protected	REMOVED
7152	13832900.77	2087579.52	LOAK	18	N	Protected	REMOVED
7154	13832961.28	2087609.53	LOAK	19.5	N	Protected	REMOVED
7156	13832960.89	2087562.67	LOAK	21	N	Protected	REMOVED
7250	13830147.93	2088117.41	LOAK	20	N	Protected	REMOVED
9786	13832163.98	2088628.97	LOAK	19.5	Y 9.5X9X6X5.5	Protected	REMOVED
9787	13832098.52	2088663.19	LOAK	20	N	Protected	REMOVED
9788	13832102.61	2088679.74	LOAK	23	Y 11X9.5X8X6.5	Protected	REMOVED
9790	13832106.66	2088760.84	LOAK	23.5	N	Protected	REMOVED
9791	13832115.60	2088732.91	LOAK	21.5	N	Protected	REMOVED
9792	13832155.87	2088724.85	LOAK	18	N	Protected	REMOVED
9794	13832206.12	2088774.05	LOAK	19	N	Protected	REMOVED
9801	13832774.41	2088453.79	LOAK	19.5	Y 13X8X5	Protected	REMOVED
9806	13832636.58	2088379.21	LOAK	20	Y 14.5X11	Protected	REMOVED
9809	13832702.66	2088394.70	LOAK	18	N	Protected	REMOVED
9810	13832735.58	2088447.06	LOAK	19.5	N	Protected	REMOVED
9834	13832973.24	2088425.03	LOAK	19	N	Protected	REMOVED
9843	13833059.18	2088179.24	LOAK	20.5	N	Protected	REMOVED
9844	13833051.55	2088180.84	LOAK	18.5	N	Protected	REMOVED
9845	13833042.93	2088193.06	LOAK	21.5	Y 17X9.5	Protected	REMOVED
9846	13833041.10	2088222.72	LOAK	21	N	Protected	REMOVED
9847	13833059.03	2088252.17	LOAK	23	N	Protected	REMOVED
9854	13833065.03	2088294.32	LOAK	19	N	Protected	REMOVED
9869	13831925.38	2088539.45	LOAK	21.5	Y 15.5X12	Protected	REMOVED
9870	13831920.49	2088534.49	LOAK	19.5	Y 13.5X12.5	Protected	REMOVED
9871	13831919.00	2088521.56	LOAK	19	Y 13X12	Protected	REMOVED
9884	13831933.63	2088841.16	POAK	23.5	N	Protected	REMOVED
9888	13831918.32	2088930.02	LOAK	18.5	N	Protected	REMOVED
9893	13831645.38	2089221.15	LOAK	20.5	N	Protected	REMOVED
9897	13831389.87	2088895.44	LOAK	20.5	N	Protected	REMOVED
9898	13831389.72	2088839.84	LOAK	20.5	N	Protected	REMOVED
9926	13832617.18	2089017.82	LOAK	18	Y 12.5X11.5	Protected	REMOVED
9929	13832505.41	2088958.30	LOAK	22.5	N	Protected	REMOVED
9932	13832356.85	2088976.68	LOAK	19	Y 14X10.5	Protected	REMOVED
9933	13832337.03	2088921.92	LOAK	23.5	N	Protected	REMOVED
9934	13832401.94	2088950.86	LOAK	18	N	Protected	REMOVED
9943	13832505.33	2088908.05	LOAK	18	Y 10X9.5X7	Protected	REMOVED
9944	13832501.11	2088918.85	LOAK	23.5	Y 10.5X10X8.5X7.5	Protected	REMOVED
9961	13832333.10	2088506.73	LOAK	23	Y 13.5X10X9.5	Protected	REMOVED
9993	13833030.50	2088532.89	LOAK	18.5	N	Protected	REMOVED

PROTECTED REMOVED TREE TOTAL=83

PROTECTED & SAVED TREE TABLE							
POINTS							
POINT #	NORTHING	EASTING	SPECIES	SIZE	MULTI-TRUNK	SIZE CLASS	CONDITION
1601	13831358.06	2088776.18	LOAK	21	N	Protected	SAVED
1605	13831502.56	2088954.88	LOAK	21	Y 15.5X11.5	Protected	SAVED
1606	13831538.15	2088927.73	LOAK	20	Y 15.5X9.5	Protected	SAVED
1613	13831767.58	2088861.08	ROAK	21.5	Y 16X11	Protected	SAVED
1617	13831647.08	2088707.19	LOAK	20	Y 16.5X7	Protected	SAVED
1621	13831761.84	2088710.91	LOAK	22	N	Protected	SAVED
1624	13831535.65	2088739.46	LOAK	18	Y 10X8.5X7.5	Protected	SAVED
1625	13831573.64	2088752.92	LOAK	18	N	Protected	SAVED
1626	13831580.25	2088824.73	LOAK	20	N	Protected	SAVED
1634	13831625.00	2089004.79	LOAK	18.5	Y 12.5X12	Protected	SAVED
1635	13831583.68	2089027.10	LOAK	20	Y 11.5X9X8.5	Protected	SAVED
1637	13832596.55	2088809.02	LOAK	21	Y 14.5X13	Protected	SAVED
1639	13832607.35	2087987.59	LOAK	20	N	Protected	SAVED
1642	13832772.25	2087873.31	LOAK	20.5	N	Protected	SAVED
1643	13832781.73	2087863.91	LOAK	21	N	Protected	SAVED
1644	13832791.08	2087887.11	LOAK	21.5	N	Protected	SAVED
1645	13832903.88	2087899.76	LOAK	21	N	Protected	SAVED
1646	13832924.21	2087899.21	LOAK	19	N	Protected	SAVED
1647	13832953.33	2087882.21	LOAK	23	Y 15.5X15.5	Protected	SAVED
1648	13832945.53	2088005.18	LOAK	19.5	Y 14X11	Protected	SAVED
1651	13832676.28	2087822.22	CELM	19	N	Protected	SAVED
1652	13832676.48	2087824.04	LOAK	23.5	N	Protected	SAVED
1653	13832642.77	2087851.38	LOAK	23	N	Protected	SAVED
1654	13832635.49	2087864.33	LOAK	21.5	N	Protected	SAVED
1655	13832625.28	2087843.58	LOAK	22.5	N	Protected	SAVED
1656	13832600.47	2087895.60	LOAK	22	N	Protected	SAVED
1658	13832581.18	2087853.29	LOAK	21	N	Protected	SAVED
1660	13832577.61	2087840.72	LOAK	19	N	Protected	SAVED
1661	13832583.14	2087817.09	LOAK	19	N	Protected	SAVED
1663	13832609.32	2087765.45	LOAK	20	N	Protected	SAVED
1664	13832649.90	2087713.62	LOAK	19	N	Protected	SAVED
1665	13832703.09	2087742.35	LOAK	22.5	Y 11.5X11.5X11	Protected	SAVED
1666	13832803.06	2087799.59	LOAK	23	N	Protected	SAVED
1668	13832861.91	2087723.71	LOAK	21.5	N	Protected	SAVED
1669	13832869.45	2087723.59	LOAK	19.5	N	Protected	SAVED
1670	13832871.22	2087717.13	LOAK	18	N	Protected	SAVED
1671	13832855.53	2087718.47	LOAK	23.5	N	Protected	SAVED
1675	13832950.20	2087703.16	LOAK	23.5	N	Protected	SAVED
1680	13832486.69	2088148.87	LOAK	18	Y 13.5X9.5	Protected	SAVED
1694	13832846.79	2087429.93	LOAK	21.5	N	Protected	SAVED
1695	13832886.96	2087428.71	BJO	20.5	N	Protected	SAVED
1973	13832851.76	2089165.03	LOAK	23.5	Y 14X10.5X9	Protected	SAVED
1974	13832738.56	2089133.41	LOAK	23.5	N	Protected	SAVED
2302	13831801.13	2090333.17	LOAK	19	N	Protected	SAVED
2303	13831816.66	2090324.32	LOAK	20	N	Protected	SAVED
2304	13831836.47	2090316.53	LOAK	19.5	N	Protected	SAVED
2305	13831839.30	2090324.79	LOAK	18	N	Protected	SAVED
2306	13831870.90	2090256.93	LOAK	22.5	Y 15.5X14	Protected	SAVED
2311	13832120.36	2090285.20	LOAK	18	N	Protected	SAVED
2312	13832170.21	2090085.69	LOAK	18	N	Protected	SAVED
2314	13832236.22	2090103.27	BJO	21.5	Y 11X11X10	Protected	SAVED
2319	13832330.84	2089979.22	LOAK	20	N	Protected	SAVED
2326	13832527.41	2089666.60	LOAK	21.5	Y 16X11	Protected	SAVED
2327	13832445.23	2089601.57	BJO	18.5	N	Protected	SAVED
2330	13832333.04	2089558.96	LOAK	18	N	Protected	SAVED
2331	13832321.22	2089527.87	LOAK	19	N	Protected	SAVED
2332	13832453.05	2089513.84	LOAK	18	Y 12X12	Protected	SAVED
2333	13832586.92	2089439.26	LOAK	22.5	N	Protected	SAVED
2334	13832551.84	2089446.46	LOAK	23	Y 13.5X12X7	Protected	SAVED
2335	13832239.64	2089489.25	LOAK	18	Y 12X12	Protected	SAVED
2336	13832226.09	2089433.54	LOAK	18.5	Y 13X11	Protected	SAVED
2340	13832343.17	2089305.82	LOAK	18.5	N	Protected</	

NOT PROTECTED TREE TABLE						
POINT #	NORTHING	EASTING	POINTS			SIZE CLASS
			SPECIES	SIZE	MULTI-TRUNK	
1602	13831550.09	2088852.34	LOAK	17	N	Not Protected
1603	13831507.37	2088876.91	LOAK	17.5	N	Not Protected
1604	13831513.57	2088913.84	LOAK	17.5	Y 12X11	Not Protected
1609	13831539.15	2088988.75	LOAK	17.5	Y 12X11.5	Not Protected
1610	13831609.35	2088932.27	LOAK	15	Y 11X8.5	Not Protected
1614	13831743.32	2088841.92	LOAK	17	Y 9X9X7	Not Protected
1615	13831695.84	2088728.52	LOAK	16.5	Y 11X11	Not Protected
1622	13831571.22	2088622.47	LOAK	17.5	Y 12X11.5	Not Protected
1629	13831788.15	2088934.82	LOAK	17	Y 9X8.5X8	Not Protected
1631	13831747.43	2089010.72	LOAK	15	Y 11X8	Not Protected
1641	13832752.27	2087943.69	LOAK	17	N	Not Protected
1649	13832896.06	2087978.03	LOAK	14.5	Y 10.5X8	Not Protected
1650	13832898.29	2087957.93	LOAK	15.5	Y 11X9.5	Not Protected
1967	13833312.12	2087663.69	LOAK	16.5	Y 8X7X5X5	Not Protected
1969	13833287.63	2089199.30	LOAK	16.5	Y 12X9.5	Not Protected
1972	13832859.62	2089138.65	LOAK	16	Y 11X10	Not Protected
1975	13830506.94	2089214.16	LOAK	15.5	Y 9X7X6.5	Not Protected
2307	13831917.74	2090241.44	LOAK	17	N	Not Protected
2308	13832032.42	2090274.67	LOAK	15	N	Not Protected
2309	13832084.23	2090211.98	LOAK	15.5	N	Not Protected
2313	13832219.73	2090046.27	LOAK	17.5	Y 12X11	Not Protected
2315	13832244.92	2090017.17	LOAK	16	N	Not Protected
2316	13832206.80	2090008.14	LOAK	16	N	Not Protected
2317	13832192.96	2090000.15	LOAK	16.5	N	Not Protected
2322	13832341.35	2089762.76	LOAK	15	N	Not Protected
2323	13832382.12	2089747.47	LOAK	13.5	N	Not Protected
2324	13832373.08	2089702.11	LOAK	16	Y 11X10	Not Protected
2325	13832417.16	2089689.24	BJO	16.5	N	Not Protected
2329	13832381.46	2089625.94	LOAK	14.5	N	Not Protected
2339	13832338.89	2089360.92	LOAK	16	N	Not Protected
2346	13832160.63	2089372.54	LOAK	17.5	N	Not Protected
2348	13832267.78	2089132.72	LOAK	17	N	Not Protected
2357	13832052.49	2089231.91	LOAK	14.5	N	Not Protected
2358	13832058.65	2089198.91	BJO	14	N	Not Protected
2362	13831943.07	2089321.50	LOAK	14	N	Not Protected
2363	13831954.47	2089328.83	LOAK	17	Y 14X6.5	Not Protected
2366	13831903.74	2089611.31	LOAK	15.5	N	Not Protected
2368	13832141.03	2089471.67	LOAK	16	N	Not Protected
2369	13832248.79	2089722.95	LOAK	16.5	N	Not Protected
2371	13831994.68	2089899.50	CELM	17.5	N	Not Protected
3506	13830524.27	2089121.29	LOAK	16	N	Not Protected
3508	13830428.17	2089119.36	LOAK	16	Y 12.5X7	Not Protected
3513	13830182.87	2089104.75	ROAK	16	Y 11.5X9	Not Protected
5752	13831747.65	2090245.23	CELM	17.5	N	Not Protected
5761	13831601.84	2090307.48	LOAK	17.5	Y 12X11.5	Not Protected
5763	13831503.47	2090264.71	LOAK	17	Y 9.5X9X6.5	Not Protected
5764	13831448.95	2090217.21	LOAK	17	N	Not Protected
5765	13831462.90	2090322.71	LOAK	14	N	Not Protected
5766	13831423.99	2090158.99	CELM	15.5	Y 10.5X10	Not Protected
5768	13831205.66	2090264.63	POAK	17	N	Not Protected
5770	13831199.44	2090196.28	POAK	14	N	Not Protected
5771	13831357.77	2090082.49	LOAK	14	N	Not Protected
5773	13831630.25	2090115.19	LOAK	14	N	Not Protected
5774	13831564.82	2090119.36	CELM	14.5	N	Not Protected
5776	13831607.21	2090039.68	CELM	16	N	Not Protected
5778	13831382.99	2090059.24	LOAK	14.5	N	Not Protected
5787	13831711.34	2089820.68	LOAK	17.5	N	Not Protected
5788	13831718.40	2089790.02	LOAK	17.5	Y 12.5X10	Not Protected
5791	13831677.93	2089637.13	LOAK	14	N	Not Protected
5792	13831665.22	2089688.37	LOAK	13	N	Not Protected
5793	13831577.12	2089786.72	LOAK	13.5	Y 9X9	Not Protected
5794	13831570.88	2089853.21	POAK	17	N	Not Protected
5797	13831423.20	2089872.42	POAK	15.5	N	Not Protected
5798	13831364.84	2089885.24	POAK	14.5	N	Not Protected
5799	13831421.21	2089823.76	POAK	14	N	Not Protected
5801	13831504.92	2089767.11	POAK	17	N	Not Protected
5804	13831413.15	2089775.69	CELM	17.5	Y 14X7	Not Protected
5805	13831375.86	2089813.47	BJO	16	N	Not Protected
5807	13831299.35	2089784.78	POAK	17	Y 12X10.5	Not Protected
5808	13831317.72	2089741.66	CELM	16	Y 8.5X8X7	Not Protected
5809	13831385.22	2089762.96	LOAK	15.5	N	Not Protected
5810	13831406.41	2089713.61	CELM	14.5	N	Not Protected
5811	13831360.15	2089673.90	CELM	14.5	Y 11X7.5	Not Protected
5812	13831247.55	2089806.67	POAK	15.5	Y 11X9.5	Not Protected
5813	13831278.88	2089841.97	POAK	14	N	Not Protected
5814	13831273.74	2089867.01	POAK	14	N	Not Protected
5818	13831278.54	2090138.75	CELM	16.5	Y 12.5X8	Not Protected
5819	13831371.77	2090273.38	LOAK	17.5	N	Not Protected
5820	13831254.94	2090123.10	LOAK	14	N	Not Protected
5821	13831095.39	2090110.18	CELM	15.5	Y 13.5X4	Not Protected
5822	13831059.99	2090163.18	POAK	17	N	Not Protected
5823	13831028.64	2090189.47	BJO	17	Y 12X10	Not Protected
5825	13830928.34	2090202.50	BJO	16.5	N	Not Protected
5826	13830871.56	2090208.38	BJO	16	N	Not Protected
5827	13830865.93	2090167.09	LOAK	14.5	N	Not Protected
5828	13830897.35	2090159.41	POAK	17	Y 12X10.5	Not Protected
5830	13831016.43	2090064.67	LOAK	16.5	N	Not Protected
5832	13831054.60	2089848.06	BJO	15.5	N	Not Protected
5836	13830530.42	2089961.54	LOAK	15	Y 10X10	Not Protected
5837	13830468.66	2090009.60	LOAK	14.5	N	Not Protected

NOT PROTECTED TREE TABLE						
POINT #	NORTHING	EASTING	POINTS			SIZE CLASS
			SPECIES	SIZE	MULTI-TRUNK	
5839	13830482.68	2090103.63	POAK	16	N	Not Protected
5844	13831115.76	2090161.90	LOAK	14.5	N	Not Protected
5848	13832393.77	2088077.90	LOAK	16.5	N	Not Protected
5849	13832321.37	2088089.33	LOAK	17	N	Not Protected
5859	13832213.39	2087691.19	LOAK	14.5	N	Not Protected
5860	13832308.11	2087662.84	LOAK	15.5	N	Not Protected
5862	13832366.49	2087581.92	LOAK	14.5	N	Not Protected
5873	13832460.20	2087421.42	LOAK	16	N	Not Protected
5882	13832436.74	2087520.22	LOAK	15.5	Y 10.5X10	Not Protected
5883	13832421.93	2087604.27	LOAK	17	N	Not Protected
5885	13832461.14	2087619.98	LOAK	17	N	Not Protected
5893	13832411.03	2087744.56	LOAK	17	Y 12.5X9.5	Not Protected
5894	13832572.19	2087642.35	LOAK	15	N	Not Protected
7002	13830050.33	2089864.43	CELM	15	Y 12X6	Not Protected
7004	13830106.90	2089755.08	CELM	15	N	Not Protected
7005	13830181.40	2089744.21	LOAK	15	N	Not Protected
7006	13830291.82	2089450.07	LOAK	17	N	Not Protected
7007	13830346.06	2089481.92	LOAK	16	N	Not Protected
7008	13830324.54	2089622.59	LOAK	17	N	Not Protected
7009	13830280.03	2089681.00	LOAK	15	N	Not Protected
7010	13830363.62	2089699.31	LOAK	16	Y 12X8.5	Not Protected
7018	13830110.56	2090185.54	LOAK	17	N	Not Protected
7019	13830092.37	2090231.99	LOAK	15	N	Not Protected
7020	13830110.52	2090216.79	BJO	16	Y 11X10	Not Protected
7022	13830150.91	2090154.31	CELM	15	N	Not Protected
7023	13830266.72	2090173.26	ROAK	17	Y 12X10	Not Protected
7024	13830327.67	2090196.82	LOAK	15	N	Not Protected
7026	13830360.88	2090268.51	LOAK	17	Y 13X8	Not Protected
7028	13830434.72	2090329.56	POAK	16	Y 11X10	Not Protected
7031	13830424.77	2090134.93	BJO	15	N	Not Protected
7033	13830328.77	2090071.08	ROAK	17	N	Not Protected
7037	13830252.77	2089847.48	LOAK	16.5	Y 11.5X10	Not Protected
7038	13830280.22	2089838.95	LOAK	16	N	Not Protected
7039	13830264.91	2089797.21	LOAK	17.5	N	Not Protected
7040	13830347.11	2089966.21	LOAK	17.5	N	Not Protected
7042	13830255.92	2089967.60	CELM	15	N	Not Protected
7047	13830922.58	2089077.79	LOAK	15	N	Not Protected
7048	13830879.84	2089070.71	LOAK	17	Y 12X10	Not Protected
7049	13830559.04	2089986.61	LOAK	15	N	Not Protected
7050	13830464.87	2089737.93	CELM	17	N	Not Protected
7052	13830734.59	2089802.86	CELM	15	N	Not Protected
7053	13830706.94	2089792.58	BJO	15	N	Not Protected
7054	13830784.14	2089860.42	LOAK	16	Y 11X10	Not Protected
7058	13830989.29	2089444.23	POAK	15	N	Not Protected
7059	13831066.22	2089808.20	POAK	16	N	Not Protected
7060	13831111.56	2089809.22	BJO	16	N	Not Protected
7061	13831070.57	2089778.04	LOAK	16.5	Y 11.5X10	Not Protected
7063	13831124.71	2089624.11	LOAK	17	N	Not Protected
7066	13831142.99	2089448.50	LOAK	15	N	Not Protected
7068	13830722.17	2089420.73	LOAK	15	N	Not Protected
7070	13830586.08	2089603.54	LOAK	15	N	Not Protected
7071	13830581.63	2089609.09	LOAK	17.5	Y 13X9	Not Protected
7072	13830783.08	2089729.79	LOAK	15	N	Not Protected
7073	13830846.58	2089460.30	LOAK	16.5	Y 11.5X10	Not Protected
7075	13830988.19	2089615.78	LOAK	17	N	Not Protected
7076	13830981.47	2089709.85	LOAK	15	N	Not Protected
7079	13831217.17	2089734.32	ROAK	17	N	Not Protected
7080	13831207.39	2089700.68	POAK	15	N	Not Protected
7081	13831248.50	2089721.42	POAK	17	N	Not Protected
7084	13831842.68	2089477.00	LOAK	16	N	Not Protected
7085	13831746.82	2089488.53	LOAK	16	Y 11X10	Not Protected
7086	13831654.34	2089589.03	LOAK	17.5	Y 12.5X10	Not Protected
7087	13831620.47	2089544.96	LOAK	15	N	Not Protected
7088	13831478.41	2089503.94	LOAK	15	N	Not Protected
7089	13831391.77	2089548.74	LOAK	17	N	Not Protected
7094	13831188.40	2089113.99	LOAK	15	N	Not Protected
7096	13831150.97	2089001.24	LOAK	16.5	Y 12X9	Not Protected
7097	13831190.57	2089038.05	LOAK	17	Y 12X10	Not Protected
7099	13831250.67	2089074.27	LOAK	16	N	Not Protected
7101	13831311.52	2089161.45	LOAK	17	N	Not Protected
7102	13831306.41	2089175.59	LOAK	15	N	Not Protected