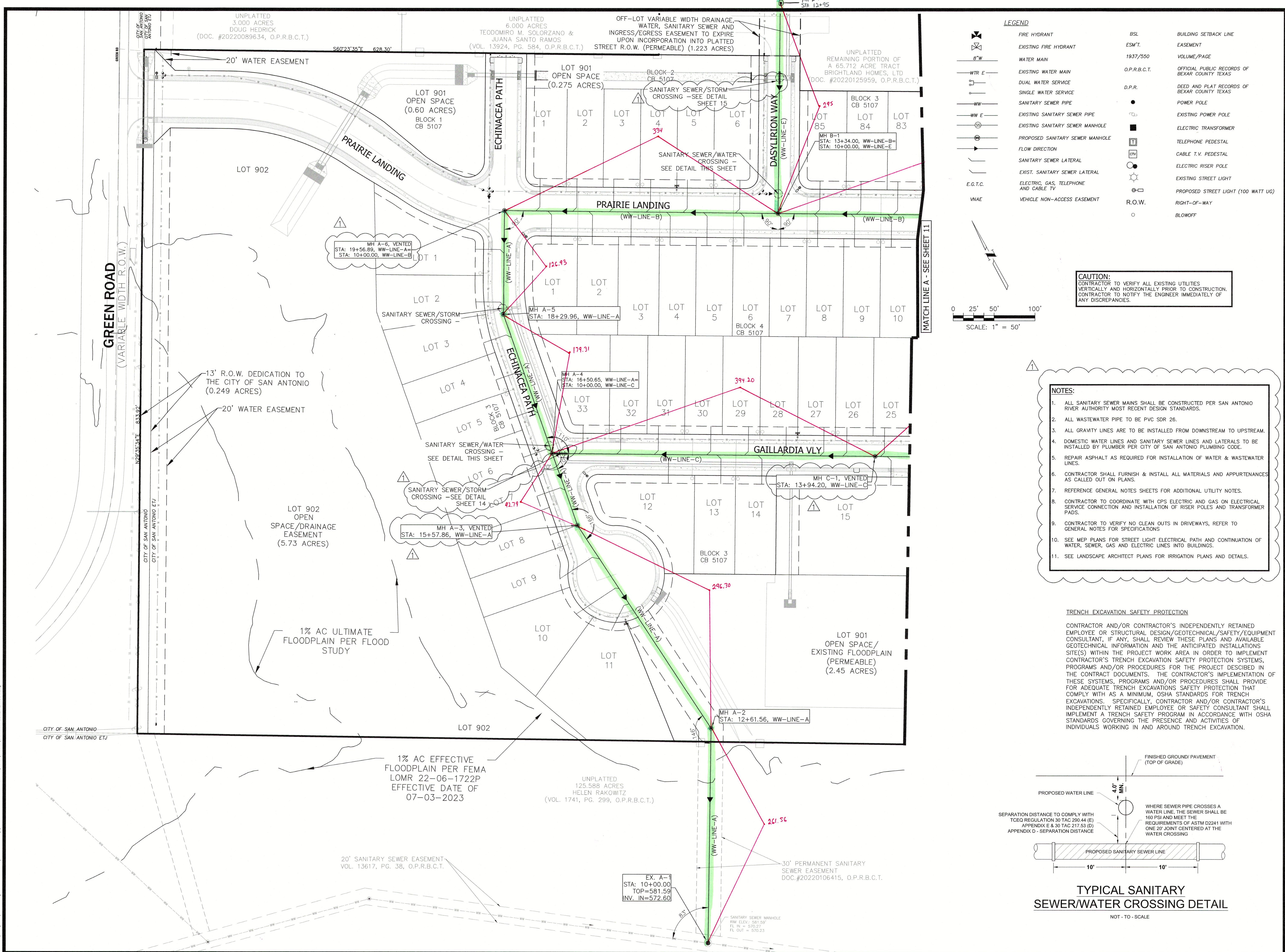


Date: Feb 22, 2024, 8:16am User ID: jph
File: U:\Projects\246 - Prairie Green - 80 Acres (Final American)\246.1 - Prairie Green - UNIT 1 (ACAD) Dwg\Sanitary Sewer Layout.dwg



UP
ENGINEERING + SURVEYING
11903 JONES ROAD, SUITE 102
SAN ANTONIO, TX 78216
TEL: 210-774-5504
WWW.UPEENGINEERING.COM
TBP# F-17892
TBP# F-10194506

2/22/24

RYAN R. PLACERS
111640
PROF. ENGINEER

BRIGHTLAND HOMES
3815 S. CAPITAL OF TEXAS HWY
AUSTIN, TX 78704

PRAIRIE GREEN - UNIT 1
PLAT NO. 22-11800419
SANITARY SEWER LAYOUT

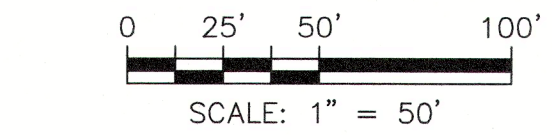
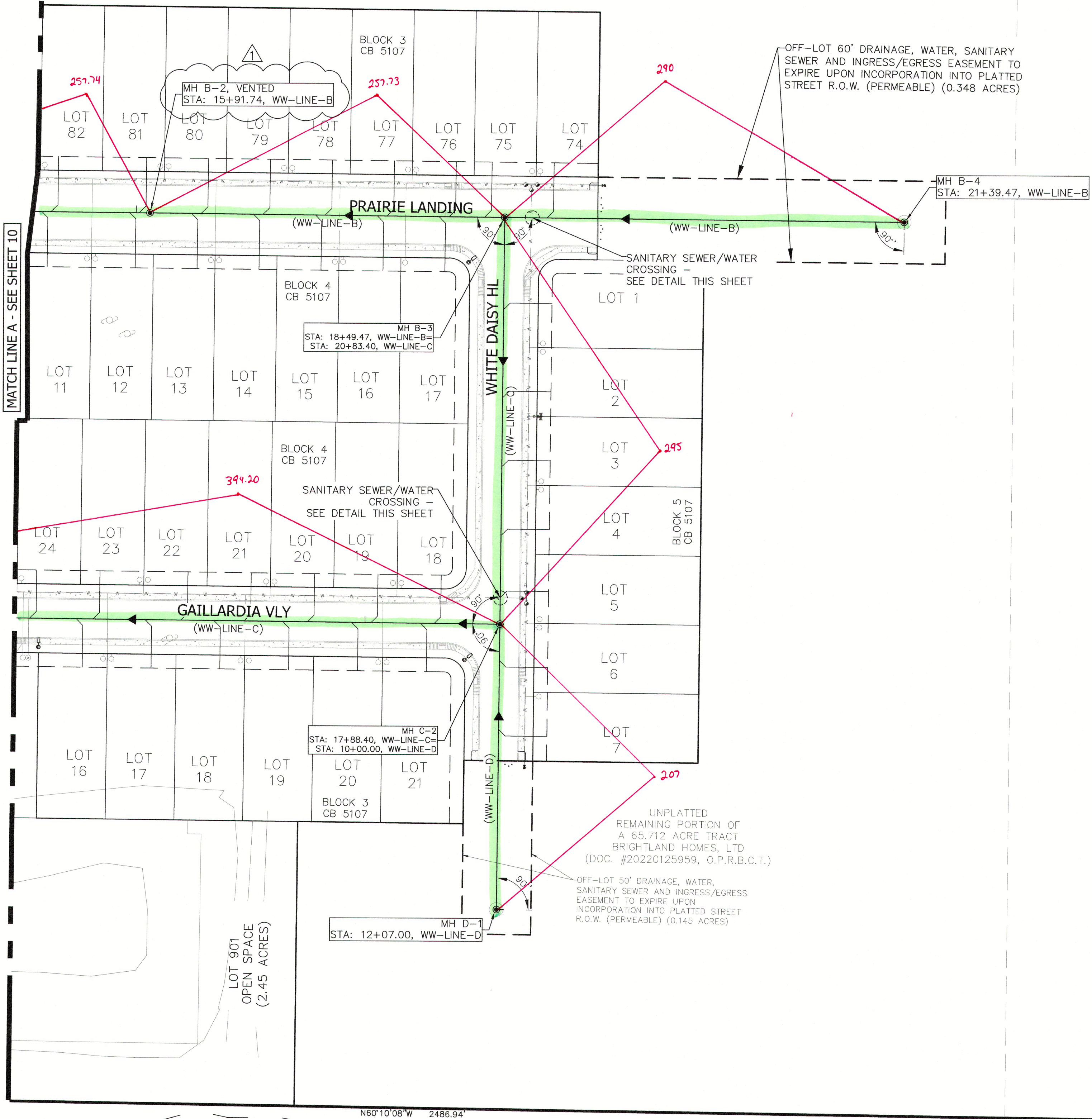
REV	DATE	DESCRIPTION	BY
1	02/22/24	NOTES REVISED AND VENTED MH ADDED	GM

DESIGNED BY: WPF
DRAFTED BY: JWH
CHECKED BY: NFU

SHEET
10
OF 59

Date: Feb 22, 2024, 9:16am User: d...
By: J... Project: 22-11800419 - Prairie Green - Unit 1 (Acad) (Sheet) SANITARY SEWER LAYOUT.dwg

UNPLATTED
REMAINING PORTION OF
A 65.712 ACRE TRACT
BRIGHTLAND HOMES, LTD
(DOC. #20220125959, O.P.R.B.C.T.)



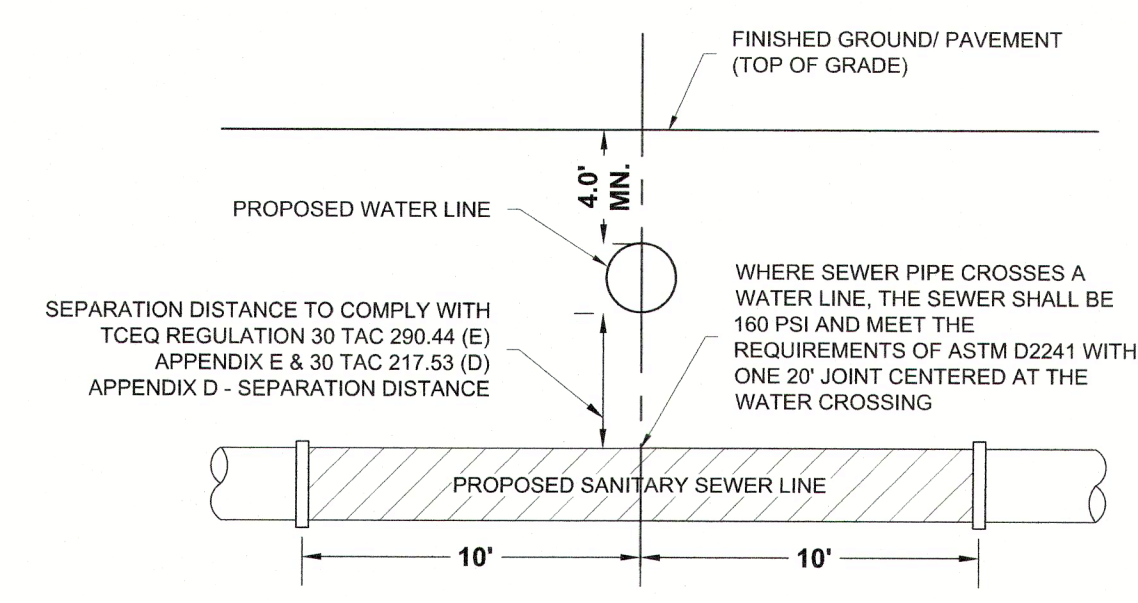
CAUTION:
CONTRACTOR TO VERIFY ALL EXISTING UTILITIES
VERTICALLY AND HORIZONTALLY PRIOR TO CONSTRUCTION.
CONTRACTOR TO NOTIFY THE ENGINEER IMMEDIATELY OF
ANY DISCREPANCIES.

LEGEND	
	FIRE HYDRANT
	EXISTING FIRE HYDRANT
	8"W
	WTR E
	DUAL WATER SERVICE
	SINGLE WATER SERVICE
	WW
	WW E
	EXISTING SANITARY SEWER MANHOLE
	PROPOSED SANITARY SEWER MANHOLE
	FLOW DIRECTION
	SANITARY SEWER LATERAL
	EXIST. SANITARY SEWER LATERAL
	E.G.T.C.
	VNAE
	BSL
	ESM'T.
	1937/550
	O.P.R.B.C.T.
	D.P.R.
	POWER POLE
	EXISTING POWER POLE
	ELECTRIC TRANSFORMER
	TELEPHONE PEDESTAL
	CABLE T.V. PEDESTAL
	ELECTRIC RISER POLE
	EXISTING STREET LIGHT
	PROPOSED STREET LIGHT (100 WATT UG)
	R.O.W.
	BLOWOFF

- NOTES:**
- ALL SANITARY SEWER MAINS SHALL BE CONSTRUCTED PER SAN ANTONIO RIVER AUTHORITY MOST RECENT DESIGN STANDARDS.
 - ALL WASTEWATER PIPE TO BE PVC SDR 26.
 - ALL GRAVITY LINES ARE TO BE INSTALLED FROM DOWNSTREAM TO UPSTREAM.
 - DOMESTIC WATER LINES AND SANITARY SEWER LINES AND LATERALS TO BE INSTALLED BY PLUMBER PER CITY OF SAN ANTONIO PLUMBING CODE.
 - REPAIR ASPHALT AS REQUIRED FOR INSTALLATION OF WATER & WASTEWATER LINES.
 - CONTRACTOR SHALL FURNISH & INSTALL ALL MATERIALS AND APPURTENANCES AS CALLED OUT ON PLANS.
 - REFERENCE GENERAL NOTES SHEETS FOR ADDITIONAL UTILITY NOTES.
 - CONTRACTOR TO COORDINATE WITH CPS ELECTRIC AND GAS ON ELECTRICAL SERVICE CONNECTION AND INSTALLATION OF RISER POLES AND TRANSFORMER PADS.
 - CONTRACTOR TO VERIFY NO CLEAN OUTS IN DRIVEWAYS, REFER TO GENERAL NOTES FOR SPECIFICATIONS.
 - SEE MEP PLANS FOR STREET LIGHT ELECTRICAL PATH AND CONTINUATION OF WATER, SEWER, GAS AND ELECTRIC LINES INTO BUILDINGS.
 - SEE LANDSCAPE ARCHITECT PLANS FOR IRRIGATION PLANS AND DETAILS.

TRENCH EXCAVATION SAFETY PROTECTION

CONTRACTOR AND/OR CONTRACTOR'S INDEPENDENTLY RETAINED EMPLOYEE OR STRUCTURAL DESIGN/GEOTECHNICAL/SAFETY/EQUIPMENT CONSULTANT, IF ANY, SHALL REVIEW THESE PLANS AND AVAILABLE GEOTECHNICAL INFORMATION AND THE ANTICIPATED INSTALLATIONS SITE(S) WITHIN THE PROJECT WORK AREA IN ORDER TO IMPLEMENT CONTRACTOR'S TRENCH EXCAVATION SAFETY PROTECTION SYSTEMS, PROGRAMS AND/OR PROCEDURES FOR THE PROJECT DESCRIBED IN THE CONTRACT DOCUMENTS. THE CONTRACTOR'S IMPLEMENTATION OF THESE SYSTEMS, PROGRAMS AND/OR PROCEDURES SHALL PROVIDE FOR ADEQUATE TRENCH EXCAVATIONS SAFETY PROTECTION THAT COMPLY WITH AS A MINIMUM, OSHA STANDARDS FOR TRENCH EXCAVATIONS. SPECIFICALLY, CONTRACTOR AND/OR CONTRACTOR'S INDEPENDENTLY RETAINED EMPLOYEE OR SAFETY CONSULTANT SHALL IMPLEMENT A TRENCH SAFETY PROGRAM IN ACCORDANCE WITH OSHA STANDARDS GOVERNING THE PRESENCE AND ACTIVITIES OF INDIVIDUALS WORKING IN AND AROUND TRENCH EXCAVATION.



**TYPICAL SANITARY
SEWER/WATER CROSSING DETAIL**

NOT - TO - SCALE

**ENGINEERING
+ SURVEYING**
11903 JONES MALMBERGER ROAD, SUITE 102
SAN ANTONIO, TX 78216 TEL 210-774-5504
WWW.UPENGINEERS.COM FAX 210-774-7992
LICENSE # 01034606

2/22/24

BRIGHTLAND HOMES
3815 S. CAPITAL OF TEXAS HWY
AUSTIN, TX 78704

PRAIRIE GREEN - UNIT 1
PLAT NO. 22-11800419

SANITARY SEWER LAYOUT

REV	DATE	DESCRIPTION	BY
1	02/22/24	NOTES REVISED AND VENTED MH ADDED	JW

DESIGNED BY: **WPF**

DRAFTED BY: **JWH**

CHECKED BY: **NFU**

SHEET
11
OF 59