

TYPICAL TREE PLANTING

SCALE: NOT-TO-SCALE  
NOTE: 1 TREE MUST BE PLANTED ON SOUTH OR WEST SIDE FOR ENERGY CREDIT



**DEVELOPMENT SERVICES**  
TREE PROTECTION SECTION  
REVIEWED FOR COMPLIANCE



**DEVELOPMENT SERVICES**  
Tree Pre-Construction Meeting  
Required prior to Site Work



It shall be the responsibility of the permit holder to maintain a copy of the approved tree plans, approved tree permit and the conditions of approval readily available at all times.



Failure to schedule a fencing inspection prior to start of work may result in a stop Work order or a Penalty of \$1,000.00 or both. UDC §35-523 (k)(2)

### NOTES

1. THIS TREE PLAN WAS DONE IN ACCORDANCE TO THE 2010 TREE CODE
2. PROPOSED TREES USED FOR ENERGY CONSERVATION CREDIT SHALL BE PLANTED ON THE SOUTHERN OR WESTERN EXPOSURE OF THE HOUSE AND BETWEEN 10 FEET TO 30 FEET OF THE HOUSE. SEE THIS SHEET FOR DETAIL.
3. GRADING PLAN WILL BE PROVIDED AS EACH SINGLE FAMILY UNIT IS DEVELOPED TO VERIFY COMPLIANCE WITH APPROVED TREE PLAN.
4. ±19.72 ACRE MEDINA VALLEY ISD SCHOOL SITE EXCLUDED FROM THIS TREE PLAN. SEPARATE TREE PLAN WILL BE PROVIDED AT BUILDING STAGE.

### HERITAGE TREE PRESERVATION

TAG NO.	SIZE	SPECIES	EXEMPT	INCHES TO REMAIN	INCHES TO BE REMOVED
1249	82M	OAK	82	0	0
TOTAL	82		82	0	0

REQUIRED PRESERVATION (2010 ORDINANCE) = 100%  
PROPOSED PRESERVATION = 82/82 = 100%

### SIGNIFICANT TREE PRESERVATION

TAG NO.	SIZE	SPECIES	LOCATION OF TREE	INCHES TO REMAIN	INCHES TO BE REMOVED
1235	15	MESQUITE	EXEMPT	0	15
1250	14	HACKBERRY	UPLAND	14	0
1252	15	MESQUITE	UPLAND	0	15
TOTAL	29			14	15

REQUIRED PRESERVATION (2010 ORDINANCE) = 30%  
PROPOSED PRESERVATION = 14/29 = 48%

### CANOPY CALCULATIONS

RESIDENTIAL:  
TOTAL RESIDENTIAL AREA = 166.82 ACRES  
CANOPY REQUIRED (2010 ORDINANCE) = 38% X 166.82 = 63.39 ACRES

TREE PLANTING-STANDARD (LOTS)  
846 LOTS X 3 TREES/LOT = 2,538 TOTAL TREES TO BE PLANTED  
846 LOTS X 3 TREES/LOT X (875 SF/TREE X 90%) = 45.88 ACRES  
43560 SF/ACRE

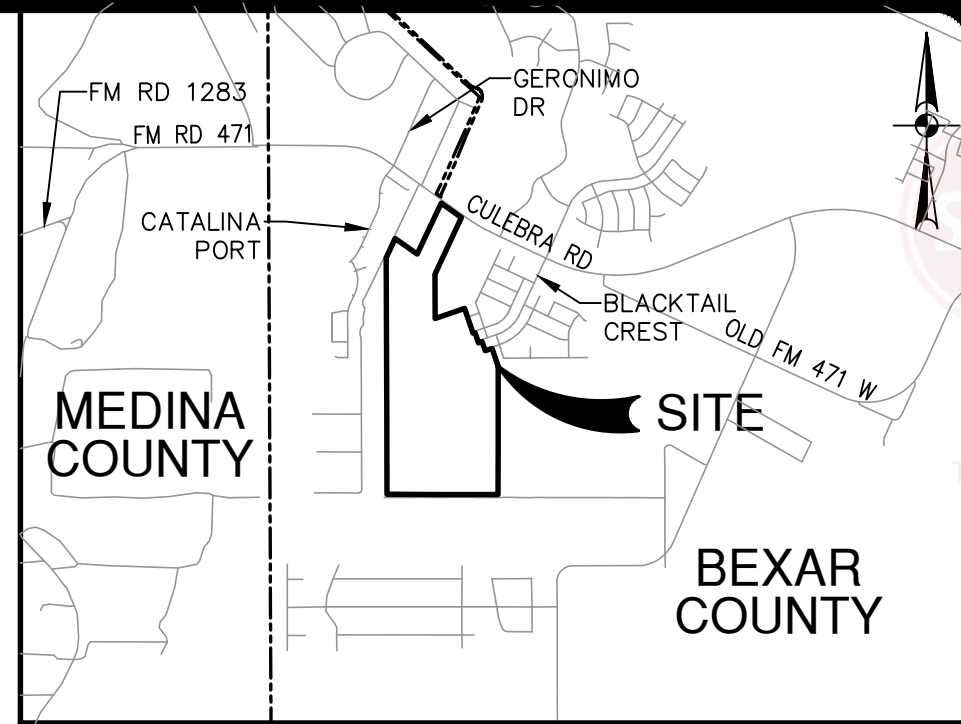
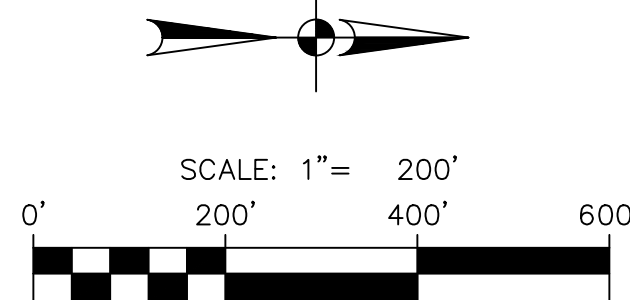
TREE PLANTING-ENERGY CONSERVATION CREDIT  
846 LOTS X 1 TREE/LOT = 846 TOTAL TREES TO BE PLANTED

846 LOTS X 1 TREE/LOT X (875 SF/TREE X 90%) X 1.5 = 22.94 ACRES  
43560 SF/ACRE

TOTAL = 45.88 + 22.94 = 68.82 ACRES PLANTED

### PLANTING NOTES

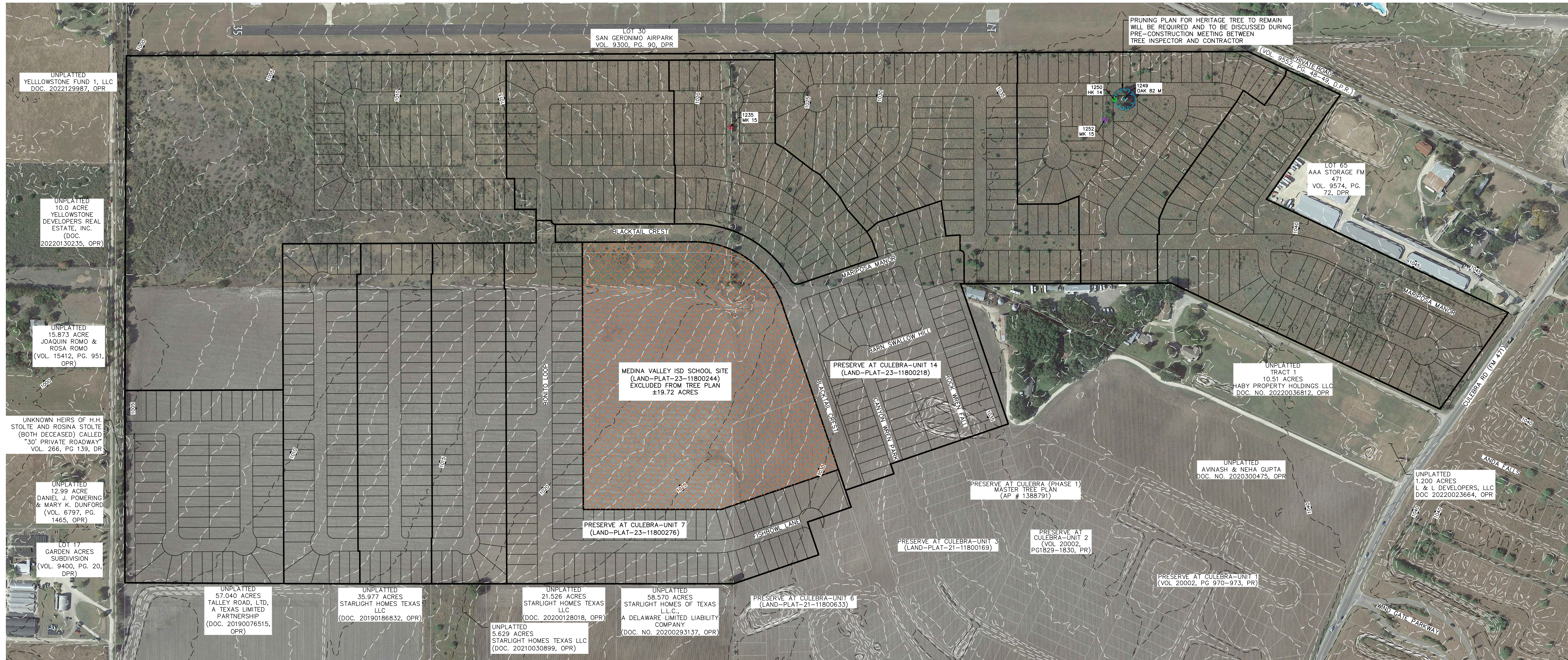
TO MEET CANOPY REQUIREMENTS, 1 OF THE 4 MEDIUM SHADE TREES SHALL BE PLANTED ON THE WESTERN AND/OR SOUTHERN SIDE OF THE STRUCTURES. TREES MUST BE LOCATED 10'-30' FROM THE BUILDING



LOCATION MAP  
NOT-TO-SCALE

### LEGEND

- UNIT BOUNDARY
- EXISTING CONTOUR
- EXEMPT & REMOVED TREES (NOT COUNTED)
- SIGNIFICANT & REMOVED TREES (NON-EXEMPT)
- SIGNIFICANT & SAVED TREES
- HERITAGE & SAVED TREES
- SCHOOL SITE-EXCLUDED FROM TREE PLAN



## PRESERVE AT CULEBRA (PHASE 2 & 3)

BEXAR COUNTY, TEXAS

### TREE PRESERVATION PLAN

PLAT NO.	11668-14
JOB NO.	NOVEMBER 2023
DATE	BAC
DESIGNER	CHECKED: BAC DRAWN: JB
SHEET	1 OF 2



