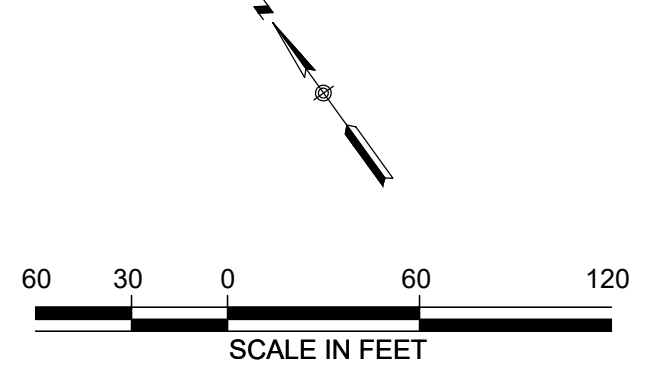
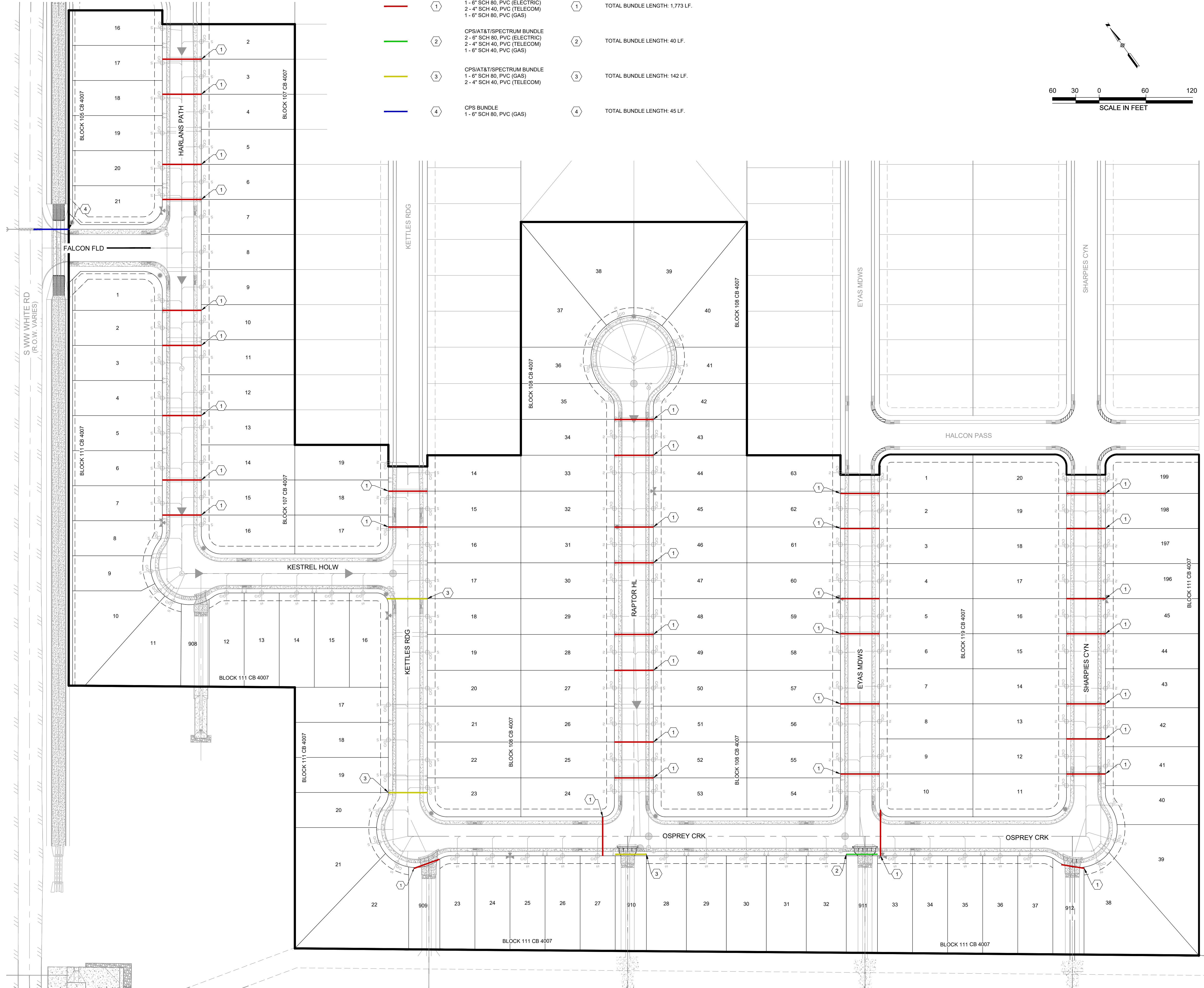


LOCATION MAP  
N.T.S.

CPS NOTES

1. WHEN INSTALLING CPS CONDUITS EACH END MUST HAVE MARKERS AND DEPTH INDICATION.
2. URD & SLT:  
ALL ELECTRICAL CROSSINGS = 6" SLEEVE FOR EACH CABLE/CONDUIT  
ALL ELECTRICAL SLEEVES PVC SCH 80, TXDOT = STEEL SLEEVE  
5' HORIZONTAL AND 1' VERTICAL SEPARATION FROM WET UTILITIES  
3' VERTICAL CLEARANCE FROM EARTHEN DRAIN  
SLEEVES CAN BE BUNDLED WITH JOIN TRENCH PARTICIPANTS  
1' VERTICAL SEPARATION FROM JT PARTICIPANTS  
GAS SLEEVE WITH 3' COVER TO TOP OF ASPHALT



CONDUIT PLAN

RED HAWK LANDING UNIT 1B SUBDIVISION  
**CASTLEROCK COMMUNITIES, LLC**

**LJA Engineering, Inc.**  
9830 Colonnade Blvd  
Suite 300  
San Antonio, Texas 78230  
Phone 210.593.2700  
LJA.COM  
FRN - F-1386