

| REVISIONS | | NO. | DATE | DESCRIPTION |
|-----------|--|-----|----------|-----------------------|
| | | 1 | 03/12/24 | ADDED PVC MARKER NOTE |

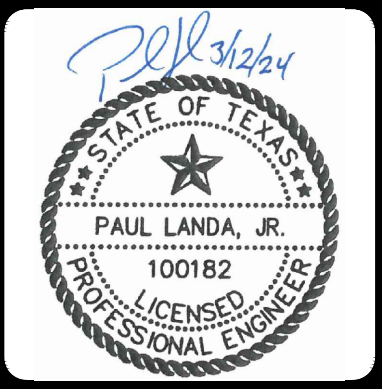
| | |
|----------|-------------|
| BY | |
| DATE | |
| NO. | |
| PROJ. # | 22-11800353 |
| DGN. BY | DMK. BY |
| CHKD. BY | |
| DATE | |

Engineers
Surveyors
Planners

MTA

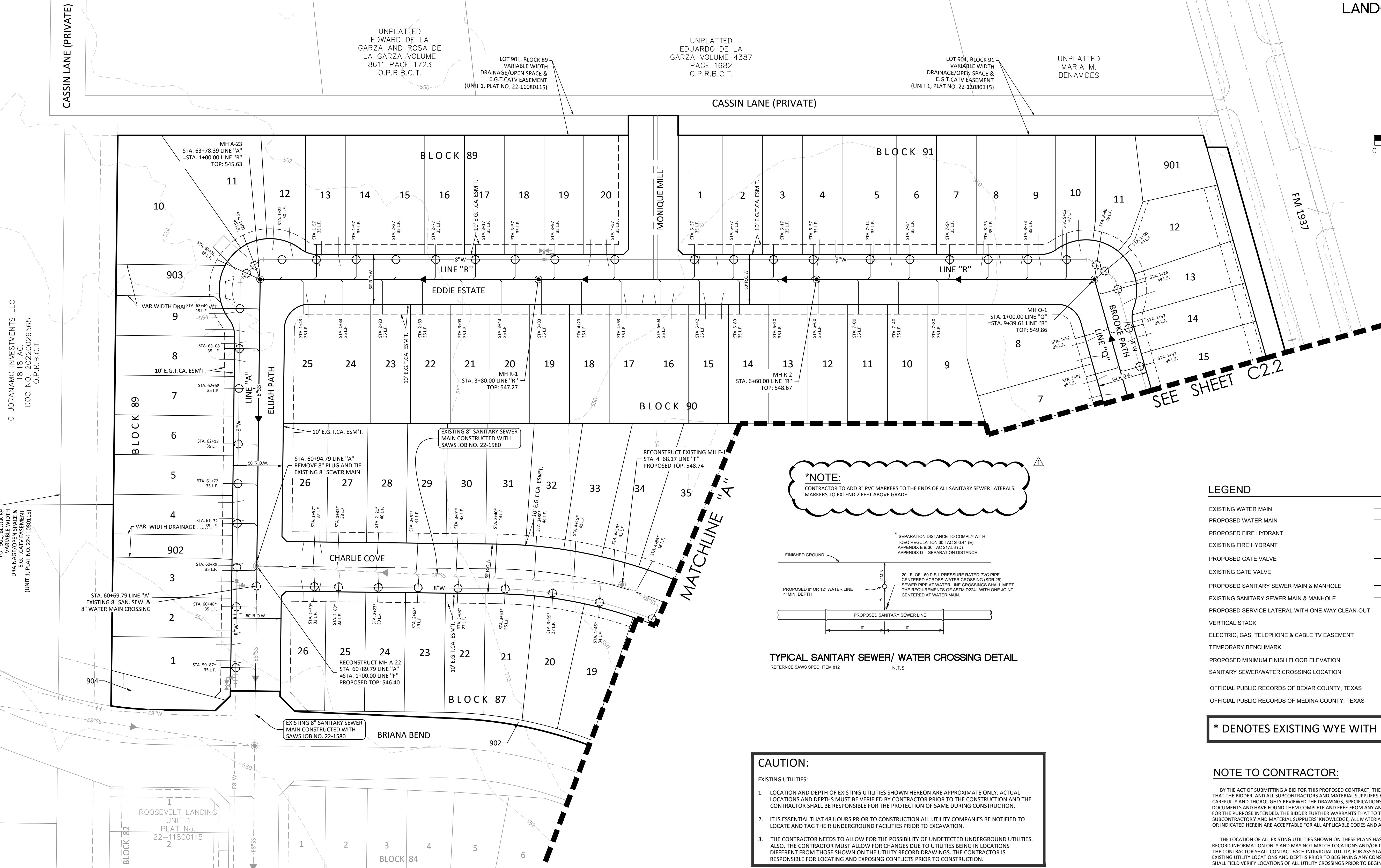
May Tarin Ramirez Engineers, LLC

TBPELS: ENGINEERING F-5297/SURVEYING: F-10131500
12770 CARMON PATH, SUITE 100 TEL: (210) 698-5051
SAN ANTONIO, TEXAS 78249 FAX: (210) 698-5055

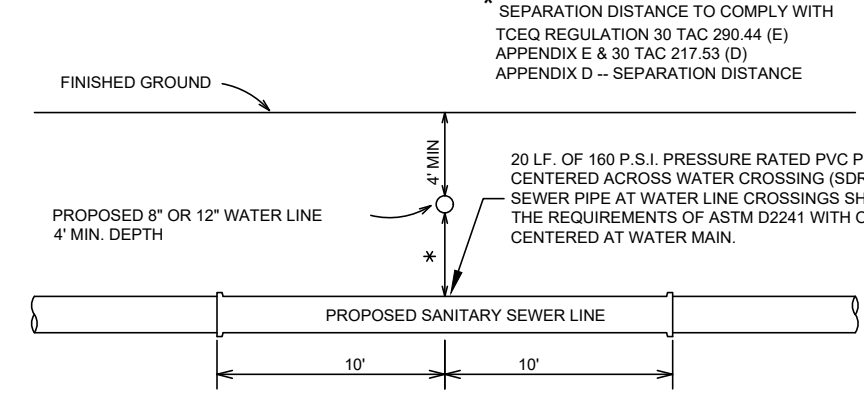


ROOSEVELT LANDING UNIT 2

SANITARY SEWER OVERALL PLAN



***NOTE:**
CONTRACTOR TO ADD 3" PVC MARKERS TO THE ENDS OF ALL SANITARY SEWER LATERALS.
MARKERS TO EXTEND 2 FEET ABOVE GRADE.



TYPICAL SANITARY SEWER/ WATER CROSSING DETAIL
REFERENCE SAWS SPEC. ITEM 812 N.T.S.

CAUTION:

EXISTING UTILITIES:

- LOCATION AND DEPTH OF EXISTING UTILITIES SHOWN HEREON ARE APPROXIMATE ONLY. ACTUAL LOCATIONS AND DEPTHS MUST BE VERIFIED BY CONTRACTOR PRIOR TO THE CONSTRUCTION AND THE CONTRACTOR SHALL BE RESPONSIBLE FOR THE PROTECTION OF SAME DURING CONSTRUCTION.
- IT IS ESSENTIAL THAT 48 HOURS PRIOR TO CONSTRUCTION ALL UTILITY COMPANIES BE NOTIFIED TO LOCATE AND TAG THEIR UNDERGROUND FACILITIES PRIOR TO EXCAVATION.
- THE CONTRACTOR NEEDS TO ALLOW FOR THE POSSIBILITY OF UNDETECTED UNDERGROUND UTILITIES. ALSO, THE CONTRACTOR MUST ALLOW FOR CHANGES DUE TO UTILITIES BEING IN LOCATIONS DIFFERENT FROM THOSE SHOWN ON THE UTILITY RECORD DRAWINGS. THE CONTRACTOR IS RESPONSIBLE FOR LOCATING AND EXPOSING CONFLICTS PRIOR TO CONSTRUCTION.

| LEGEND | |
|---|-------------------|
| EXISTING WATER MAIN | EX 8"W |
| PROPOSED WATER MAIN | 8"W |
| PROPOSED FIRE HYDRANT | |
| EXISTING FIRE HYDRANT | |
| PROPOSED GATE VALVE | |
| EXISTING GATE VALVE | |
| PROPOSED SANITARY SEWER MAIN & MANHOLE | 8"SS |
| EXISTING SANITARY SEWER MAIN & MANHOLE | EX 8"SS |
| PROPOSED SERVICE LATERAL WITH ONE-WAY CLEAN-OUT | VS |
| VERTICAL STACK | E.G.T.C.A.E. |
| ELECTRIC, GAS, TELEPHONE & CABLE TV EASEMENT | |
| TEMPORARY BENCHMARK | MIN. F.F. = 795.5 |
| PROPOSED MINIMUM FINISH FLOOR ELEVATION | |
| SANITARY SEWER/WATER CROSSING LOCATION | |
| OFFICIAL PUBLIC RECORDS OF BEXAR COUNTY, TEXAS | O.P.R.B.C.T. |
| OFFICIAL PUBLIC RECORDS OF MEDINA COUNTY, TEXAS | O.P.R.M.C.T. |

*** DENOTES EXISTING WYE WITH NEW LATERAL**

NOTE TO CONTRACTOR:

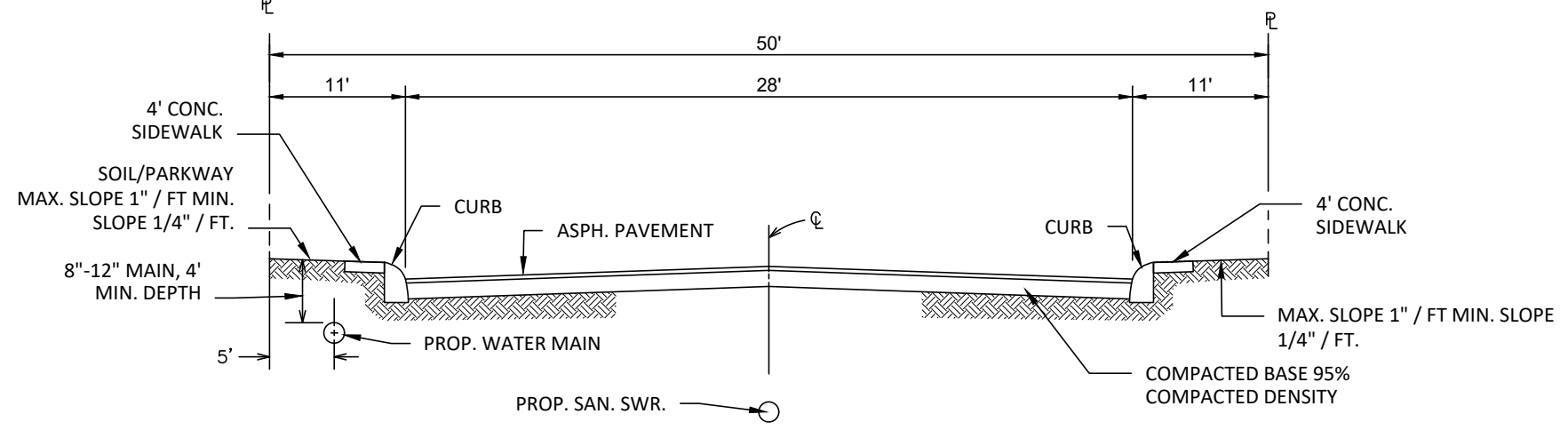
BY THE ACT OF SUBMITTING A BID FOR THIS PROPOSED CONTRACT, THE BIDDER WARRANTS THAT THE BIDDER, AND ALL SUBCONTRACTORS AND MATERIAL SUPPLIERS HE INTENDS TO USE HAVE CAREFULLY AND THOROUGHLY REVIEWED THE DRAWINGS, SPECIFICATIONS AND ALL OTHER CONTRACT DOCUMENTS AND HAVE FOUND THEM COMPLETE AND FREE FROM ANY AMBIGUITIES AND SUFFICIENT FOR THE PURPOSE INTENDED. THE BIDDER FURTHER WARRANTS THAT TO THE BEST OF HIS OR HIS SUBCONTRACTORS' AND MATERIAL SUPPLIERS' KNOWLEDGE, ALL MATERIALS AND PRODUCTS SPECIFIED OR INDICATED HEREIN ARE ACCEPTABLE FOR ALL APPLICABLE CODES AND AUTHORITIES.

THE LOCATION OF ALL EXISTING UTILITIES SHOWN ON THESE PLANS HAS BEEN BASED UPON RECORD INFORMATION ONLY AND MAY NOT MATCH LOCATIONS AND/OR DEPTHS AS CONSTRUCTED. THE CONTRACTOR SHALL CONTACT EACH INDIVIDUAL UTILITY, FOR ASSISTANCE IN DETERMINING EXISTING UTILITY LOCATIONS AND DEPTHS PRIOR TO BEGINNING ANY CONSTRUCTION. CONTRACTOR SHALL FIELD VERIFY LOCATIONS OF ALL UTILITY CROSSINGS PRIOR TO BEGINNING ANY CONSTRUCTION.

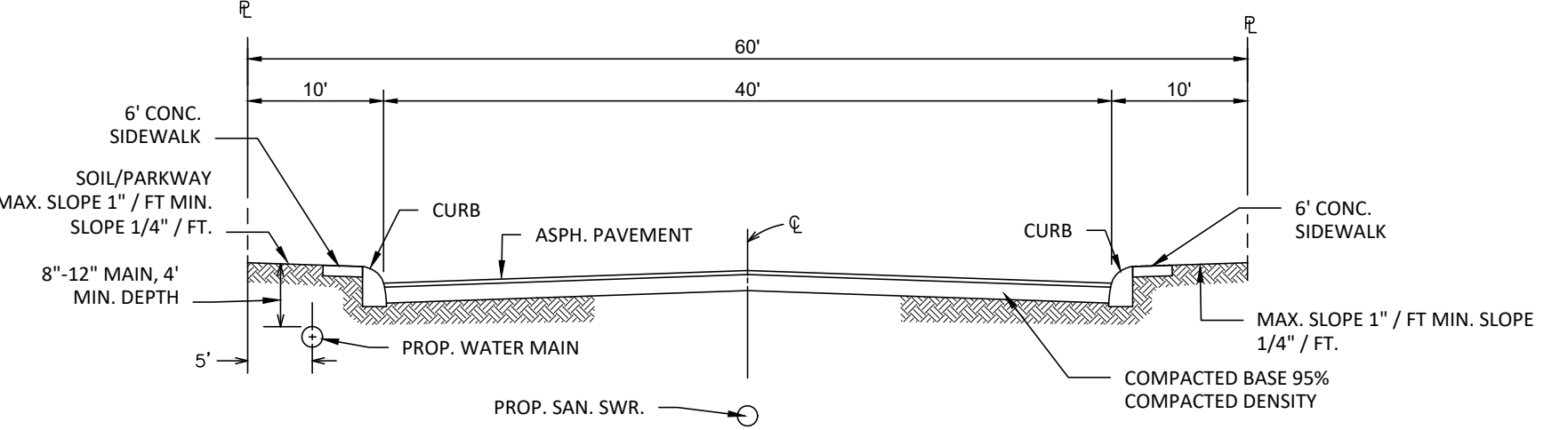
TRENCH EXCAVATION SAFETY PROTECTION

Contractor and/or Contractor's independently retained employee or structural design/geotechnical/safety/equipment consultant, if any, shall review these plans and available geotechnical information and the anticipated installation site(s) within the project work area in order to implement Contractor's trench excavation safety protection systems, programs and/or procedures for the project described in the contract documents. The Contractor's implementation of these systems, programs and/or procedures shall provide for adequate trench excavation safety protection that comply with as a minimum, OSHA standards for trench excavations. Specifically, Contractor and/or Contractor's independently retained employee or safety consultant shall implement a trench safety program in accordance with OSHA standards governing the presence and activities of individuals working in and around trench excavation.

| | | | |
|------------------------------|------------------------------------|--------------|-------------|
| Developer's Name | SAN ANTONIO, LD. LLC. | | |
| Developer's Address | 4058 NORTH COLLEGE STE. 300, BOX 9 | | |
| City | FAYETTEVILLE | State | AR |
| Zip | 72703 | | |
| Phone # | (479) 455-9090 | Fax # | |
| SAWS Block Map # | 170-520 | Total EDU's | 121 |
| Total Linear Footage of Pipe | 8" ~ 2082 L.F. | Plat No. | 22-11800353 |
| Number of Lots | 121 | SAWS Job No. | 22-1659 |



TYPICAL STREET CROSS-SECTION (28' PAVEMENT)
N.T.S.



TYPICAL STREET CROSS-SECTION (40' PAVEMENT)
N.T.S.

| REVISIONS | | | | |
|-----------|----------|-----------------------|----|--|
| NO. | DATE | DESCRIPTION | BY | |
| A | 03/12/24 | ADDED PVC MARKER NOTE | | |
| | | | | |
| | | | | |
| | | | | |
| | | | | |
| | | | | |
| | | | | |
| | | | | |
| | | | | |
| | | | | |
| | | | | |
| | | | | |
| | | | | |
| | | | | |
| | | | | |
| | | | | |
| | | | | |
| | | | | |
| | | | | |
| | | | | |
| | | | | |
| | | | | |
| | | | | |
| | | | | |
| | | | | |
| | | | | |
| | | | | |
| | | | | |
| | | | | |
| | | | | |
| | | | | |
| | | | | |
| | | | | |
| | | | | |
| | | | | |
| | | | | |
| | | | | |
| | | | | |
| | | | | |
| | | | | |
| | | | | |
| | | | | |
| | | | | |
| | | | | |
| | | | | |
| | | | | |
| | | | | |
| | | | | |
| | | | | |
| | | | | |
| | | | | |
| | | | | |
| | | | | |
| | | | | |
| | | | | |
| | | | | |
| | | | | |
| | | | | |
| | | | | |
| | | | | |
| | | | | |
| | | | | |
| | | | | |
| | | | | |
| | | | | |
| | | | | |
| | | | | |
| | | | | |
| | | | | |
| | | | | |
| | | | | |
| | | | | |
| | | | | |
| | | | | |
| | | | | |
| | | | | |
| | | | | |
| | | | | |
| | | | | |
| | | | | |
| | | | | |
| | | | | |
| | | | | |
| | | | | |
| | | | | |
| | | | | |
| | | | | |
| | | | | |
| | | | | |
| | | | | |
| | | | | |
| | | | | |
| | | | | |
| | | | | |
| | | | | |
| | | | | |
| | | | | |
| | | | | |
| | | | | |
| | | | | |
| | | | | |
| | | | | |
| | | | | |
| | | | | |
| | | | | |
| | | | | |
| | | | | |
| | | | | |
| | | | | |
| | | | | |
| | | | | |
| | | | | |
| | | | | |
| | | | | |
| | | | | |
| | | | | |
| | | | | |
| | | | | |
| | | | | |
| | | | | |
| | | | | |
| | | | | |
| | | | | |
| | | | | |
| | | | | |
| | | | | |
| | | | | |
| | | | | |
| | | | | |
| | | | | |
| | | | | |
| | | | | |
| | | | | |
| | | | | |
| | | | | |
| | | | | |
| | | | | |
| | | | | |
| | | | | |
| | | | | |
| | | | | |
| | | | | |
| | | | | |
| | | | | |
| | | | | |
| | | | | |
| | | | | |
| | | | | |
| | | | | |
| | | | | |
| | | | | |
| | | | | |
| | | | | |
| | | | | |
| | | | | |
| | | | | |
| | | | | |
| | | | | |
| | | | | |
| | | | | |
| | | | | |
| | | | | |
| | | | | |
| | | | | |
| | | | | |
| | | | | |
| | | | | |
| | | | | |
| | | | | |
| | | | | |
| | | | | |
| | | | | |
| | | | | |
| | | | | |
| | | | | |
| | | | | |
| | | | | |
| | | | | |
| | | | | |
| | | | | |
| | | | | |
| | | | | |
| | | | | |
| | | | | |
| | | | | |
| | | | | |
| | | | | |
| | | | | |
| | | | | |
| | | | | |
| | | | | |
| | | | | |
| | | | | |
| | | | | |
| | | | | |
| | | | | |
| | | | | |
| | | | | |
| | | | | |
| | | | | |
| | | | | |
| | | | | |
| | | | | |
| | | | | |
| | | | | |
| | | | | |
| | | | | |
| | | | | |
| | | | | |
| | | | | |
| | | | | |
| | | | | |
| | | | | |
| | | | | |
| | | | | |
| | | | | |
| | | | | |
| | | | | |
| | | | | |
| | | | | |
| | | | | |
| | | | | |
| | | | | |
| | | | | |
| | | | | |
| | | | | |
| | | | | |
| | | | | |
| | | | | |
| | | | | |
| | | | | |
| | | | | |
| | | | | |
| | | | | |
| | | | | |
| | | | | |
| | | | | |
| | | | | |
| | | | | |