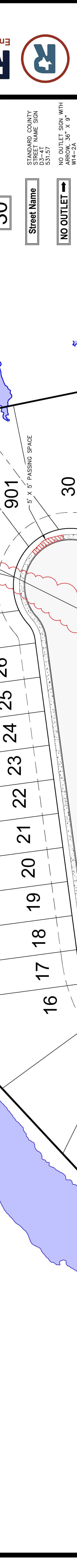


ROSE VALLEY SOUTH - UNIT 1
SIGNAGE PLAN
BEXAR COUNTY, TEXAS

Engineering & Surveying
RAKOWITZ
 Texas Registered Engineering Firm F-155
 830-281-4060



BEAR COUNTY, R.O.W. NOTE:
 BEAR COUNTY R.O.W. PERMITS MUST BE OBTAINED PRIOR TO WORKING WITHIN EXISTING BEAR COUNTY R.O.W.

SIGNAGE NOTES:

1. CONTACT BEXAR COUNTY PUBLIC WORKS / 9-1-1 ADDRESSING FOR APPROVAL OF SIGNAGE.
2. UNDERGROUND UTILITIES EXIST WITHIN THE PROJECT. CONTRACTOR SHALL HAVE THE UTILITIES MARKED PRIOR TO CONSTRUCTION. THE UTILITIES SHALL BE ILLUSTRATED ON THE PLANS AS APPROXIMATE. CONTRACTOR SHALL LOCATE SIGNS TO AVOID UTILITIES. CONTRACTOR IS RESPONSIBLE FOR VERIFYING THE LOCATION AND DEPTH OF UNDERGROUND UTILITIES BEFORE COMMENCING WORK.
3. IN ACCORDANCE WITH THE UNDERGROUND FACILITY DAMAGE PREVENTION ACT, THE TELEPHONE NUMBER FOR A UTILITY LOCATOR IS 817-799-7273. CONTRACTOR SHALL BE RESPONSIBLE TO MAKE ARRANGEMENTS FOR UTILITY LOCATORS, AS NEEDED.
4. CONTRACTOR SHALL BE RESPONSIBLE FOR THE CARE OF ALL EXISTING UTILITIES. CONTRACTOR SHALL TAKE CARE TO AVOID AND PROTECT ALL EXISTING UTILITIES, TELECOMMUNICATION FACILITIES, ELECTRICAL CONDUITS, & PUBLIC UTILITIES. WITH THE SIGN DESIGNS PRESENTED IN THE TEXAS MANUAL ON UNIFORM TRAFFIC CONTROL DEVICES.
5. CONTRACTOR SHALL FURNISH AND MAINTAIN ALL TRAFFIC CONTROL DEVICES THROUGHOUT CONSTRUCTION. CONTRACTOR SHALL COMPLETE THE WORK ALL CONSTRUCTION SIGNS AND TRAFFIC CONTROL DEVICES SHALL CONFORM TO THE TEXAS MANUAL ON UNIFORM TRAFFIC CONTROL DEVICES.
6. CONTRACTOR SHALL FURNISH AND MAINTAIN ALL TRAFFIC CONTROL DEVICES THROUGHOUT CONSTRUCTION. CONTRACTOR SHALL COMPLETE THE WORK ALL CONSTRUCTION SIGNS AND TRAFFIC CONTROL DEVICES SHALL CONFORM TO THE TEXAS MANUAL ON UNIFORM TRAFFIC CONTROL DEVICES.
7. CONTRACTOR SHALL FURNISH AND MAINTAIN ALL TRAFFIC CONTROL DEVICES THROUGHOUT CONSTRUCTION. CONTRACTOR SHALL COMPLETE THE WORK ALL CONSTRUCTION SIGNS AND TRAFFIC CONTROL DEVICES SHALL CONFORM TO THE TEXAS MANUAL ON UNIFORM TRAFFIC CONTROL DEVICES.
8. CONTRACTOR SHALL FURNISH AND MAINTAIN ALL TRAFFIC CONTROL DEVICES THROUGHOUT CONSTRUCTION. CONTRACTOR SHALL COMPLETE THE WORK ALL CONSTRUCTION SIGNS AND TRAFFIC CONTROL DEVICES SHALL CONFORM TO THE TEXAS MANUAL ON UNIFORM TRAFFIC CONTROL DEVICES.
9. CONTRACTOR SHALL FURNISH AND MAINTAIN ALL TRAFFIC CONTROL DEVICES THROUGHOUT CONSTRUCTION. CONTRACTOR SHALL COMPLETE THE WORK ALL CONSTRUCTION SIGNS AND TRAFFIC CONTROL DEVICES SHALL CONFORM TO THE TEXAS MANUAL ON UNIFORM TRAFFIC CONTROL DEVICES.
10. CONTRACTOR SHALL FURNISH AND MAINTAIN ALL TRAFFIC CONTROL DEVICES THROUGHOUT CONSTRUCTION. CONTRACTOR SHALL COMPLETE THE WORK ALL CONSTRUCTION SIGNS AND TRAFFIC CONTROL DEVICES SHALL CONFORM TO THE TEXAS MANUAL ON UNIFORM TRAFFIC CONTROL DEVICES.
11. CONTRACTOR SHALL FURNISH AND MAINTAIN ALL TRAFFIC CONTROL DEVICES THROUGHOUT CONSTRUCTION. CONTRACTOR SHALL COMPLETE THE WORK ALL CONSTRUCTION SIGNS AND TRAFFIC CONTROL DEVICES SHALL CONFORM TO THE TEXAS MANUAL ON UNIFORM TRAFFIC CONTROL DEVICES.
12. CONTRACTOR SHALL FURNISH AND MAINTAIN ALL TRAFFIC CONTROL DEVICES THROUGHOUT CONSTRUCTION. CONTRACTOR SHALL COMPLETE THE WORK ALL CONSTRUCTION SIGNS AND TRAFFIC CONTROL DEVICES SHALL CONFORM TO THE TEXAS MANUAL ON UNIFORM TRAFFIC CONTROL DEVICES.

CONTRACTOR TO FURNISH & INSTALL "STOP SIGN" & "STREET NAME" SIGNS. LOCATE NO LESS THAN 6" FROM FACE OF CURB TO SIGN EDGE & 7" IN HEIGHT ABOVE ROAD GRADE.

CONTRACTOR TO FURNISH & INSTALL "SPEED LIMIT 30" SIGN. LOCATE NO LESS THAN 8' FROM FACE OF CURB TO SIGN EDGE & 7" IN HEIGHT ABOVE ROAD GRADE.

CONTRACTOR TO FURNISH & INSTALL "STREET NAME" SIGNS. LOCATE NO LESS THAN 6" FROM FACE OF CURB TO SIGN EDGE & 7" IN HEIGHT ABOVE ROAD GRADE.

CONTRACTOR TO FURNISH & INSTALL "STOP SIGN" & "STREET NAME" SIGNS. LOCATE NO LESS THAN 6" FROM FACE OF CURB TO SIGN EDGE & 7" IN HEIGHT ABOVE ROAD GRADE.

CONTRACTOR TO FURNISH & INSTALL "STOP SIGN" & "STREET NAME" SIGNS. LOCATE NO LESS THAN 6" FROM FACE OF CURB TO SIGN EDGE & 7" IN HEIGHT ABOVE ROAD GRADE.

CONTRACTOR TO FURNISH & INSTALL "STOP SIGN" & "STREET NAME" SIGNS. LOCATE NO LESS THAN 6" FROM FACE OF CURB TO SIGN EDGE & 7" IN HEIGHT ABOVE ROAD GRADE.

CONTRACTOR TO REMOVE 7' OF DOUBLE YELLOW STRIPING FROM FRONT OF PROPOSED ROSE SHORE DRIVEWAY.

CONTRACTOR TO REMOVE 7' OF DOUBLE YELLOW STRIPING FROM FRONT OF PROPOSED ROSE SHORE DRIVEWAY.

CONTRACTOR TO REMOVE 7' OF DOUBLE YELLOW STRIPING FROM FRONT OF PROPOSED ROSE SHORE DRIVEWAY.

CONTRACTOR TO REMOVE 7' OF DOUBLE YELLOW STRIPING FROM FRONT OF PROPOSED ROSE SHORE DRIVEWAY.

CONTRACTOR TO REMOVE 7' OF DOUBLE YELLOW STRIPING FROM FRONT OF PROPOSED ROSE SHORE DRIVEWAY.

CONTRACTOR TO REMOVE 7' OF DOUBLE YELLOW STRIPING FROM FRONT OF PROPOSED ROSE SHORE DRIVEWAY.

CONTRACTOR TO REMOVE 7' OF DOUBLE YELLOW STRIPING FROM FRONT OF PROPOSED ROSE SHORE DRIVEWAY.

CONTRACTOR TO REMOVE 7' OF DOUBLE YELLOW STRIPING FROM FRONT OF PROPOSED ROSE SHORE DRIVEWAY.

CONTRACTOR TO REMOVE 7' OF DOUBLE YELLOW STRIPING FROM FRONT OF PROPOSED ROSE SHORE DRIVEWAY.

CONTRACTOR TO REMOVE 7' OF DOUBLE YELLOW STRIPING FROM FRONT OF PROPOSED ROSE SHORE DRIVEWAY.

CONTRACTOR TO REMOVE 7' OF DOUBLE YELLOW STRIPING FROM FRONT OF PROPOSED ROSE SHORE DRIVEWAY.

CONTRACTOR TO REMOVE 7' OF DOUBLE YELLOW STRIPING FROM FRONT OF PROPOSED ROSE SHORE DRIVEWAY.

CONTRACTOR TO REMOVE 7' OF DOUBLE YELLOW STRIPING FROM FRONT OF PROPOSED ROSE SHORE DRIVEWAY.

CONTRACTOR TO REMOVE 7' OF DOUBLE YELLOW STRIPING FROM FRONT OF PROPOSED ROSE SHORE DRIVEWAY.

CONTRACTOR TO REMOVE 7' OF DOUBLE YELLOW STRIPING FROM FRONT OF PROPOSED ROSE SHORE DRIVEWAY.

CONTRACTOR TO REMOVE 7' OF DOUBLE YELLOW STRIPING FROM FRONT OF PROPOSED ROSE SHORE DRIVEWAY.

CONTRACTOR TO REMOVE 7' OF DOUBLE YELLOW STRIPING FROM FRONT OF PROPOSED ROSE SHORE DRIVEWAY.

CONTRACTOR TO REMOVE 7' OF DOUBLE YELLOW STRIPING FROM FRONT OF PROPOSED ROSE SHORE DRIVEWAY.

CONTRACTOR TO REMOVE 7' OF DOUBLE YELLOW STRIPING FROM FRONT OF PROPOSED ROSE SHORE DRIVEWAY.

CONTRACTOR TO REMOVE 7' OF DOUBLE YELLOW STRIPING FROM FRONT OF PROPOSED ROSE SHORE DRIVEWAY.