

PLAN VIEW

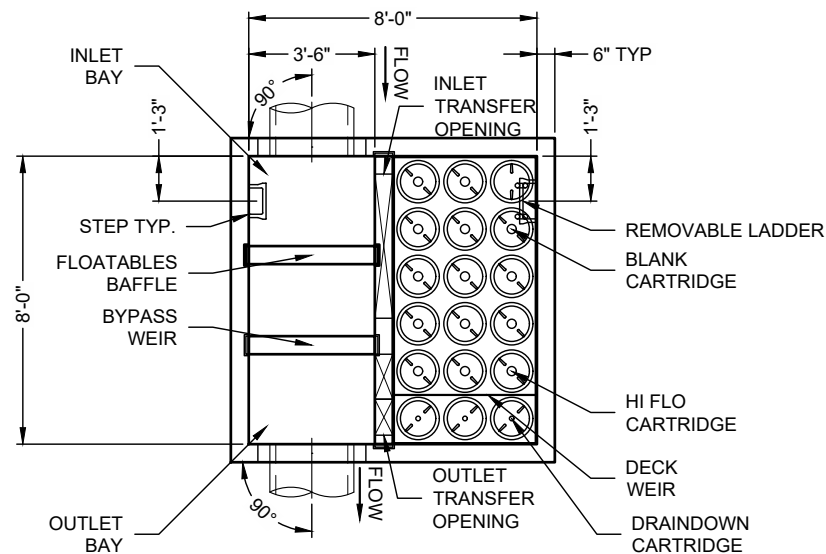
SHOP DRAWING

- ☒ NO EXCEPTIONS TAKEN SUBMIT SPECIFIED ITEM ☐
☐ REVISE AS NOTED REJECTED ☐
☐ REVISE AND RESUBMIT

Checking is only for general conformance with design concept of project and general compliance with the Contract Documents. Contractor is responsible for confirming and correlating dimensions at job site for information which pertains to fabrication processing and/or construction techniques and for coordination of the work of all trades. Checking of shop drawings shall not relieve Contractor, any Subcontractor and/or Material Supplier of responsibility for deviation from requirements of Contract Documents nor for the errors or omissions in shop drawings.

DATE 3/21/24 BY Brooke Lindholm, PE
PAPE-DAWSON ENGINEERS, INC.

NOTES:



PLAN VIEW

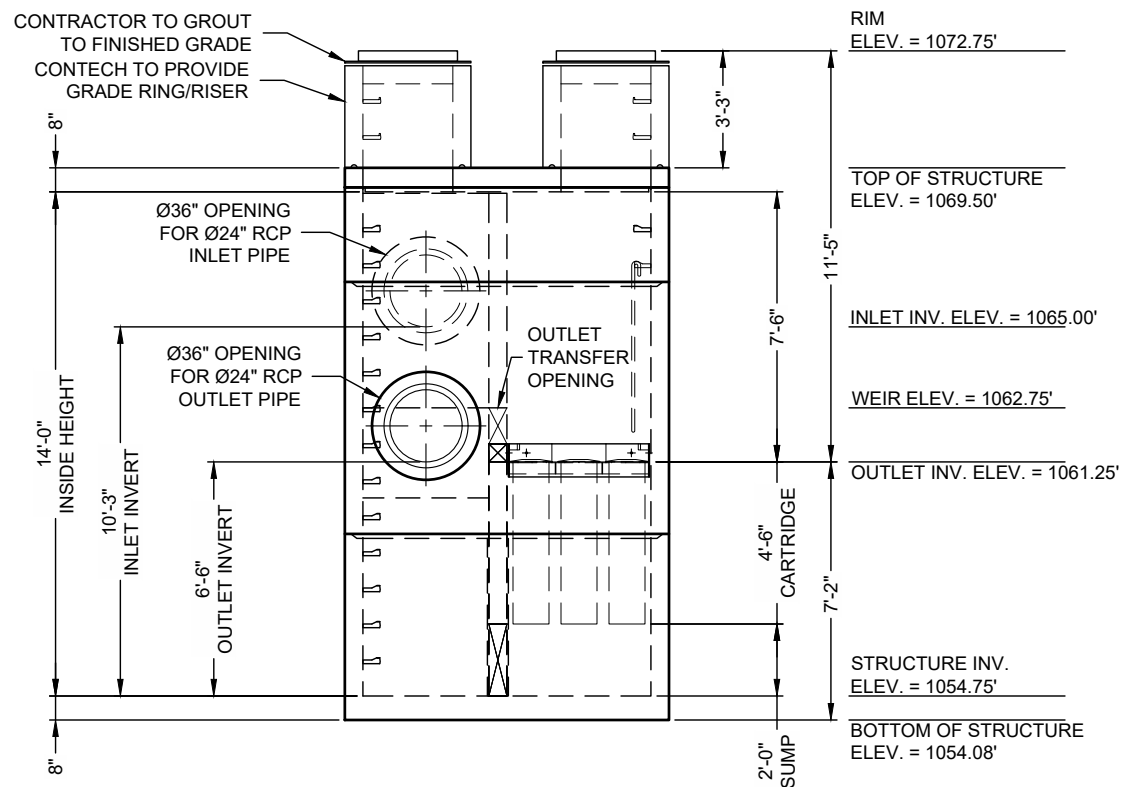
(TOP SLAB NOT SHOWN FOR CLARITY)

MATERIAL LIST - PROVIDED BY CONTECH

COUNT	DESCRIPTION	INSTALLED BY
14	54" HI-FLO CARTRIDGE (70 mm ORIFICE)	CONTECH
3	54" DRAINDOWN CARTRIDGE (35 mm ORIFICE)	CONTECH
1	CARTRIDGE BLANK (NO ORIFICE)	CONTECH
1	JELLYFISH VAULT 18-CARTRIDGE DECK, STANDARD	CONTECH
1	JOINT SEALANT (BY PRECASTER)	CONTRACTOR
3	Ø30" X 4" FRAME & COVER, EJ #41600483	CONTRACTOR
1	Ø24" X 4" FRAME & COVER, EJ #41600389	CONTRACTOR
4 PLCS.	GRADE RING/RISER	CONTRACTOR
18	STEPS	CONTECH

SITE DESIGN DATA

WATER QUALITY FLOW RATE	2.76 CFS
PEAK FLOW RATE	28.76 CFS
RETURN PERIOD OF PEAK FLOW	25 YRS



ELEVATION VIEW

- GENERAL NOTES:

1. CONTECH TO PROVIDE ALL MATERIALS UNLESS NOTED OTHERWISE.
2. FOR FABRICATION DRAWINGS WITH DETAILED STRUCTURE DIMENSIONS AND WEIGHT, PLEASE CONTACT YOUR CONTECH ENGINEERED SOLUTIONS REPRESENTATIVE. WWW.ContechES.COM
3. JELLYFISH WATER QUALITY STRUCTURE SHALL BE IN ACCORDANCE WITH ALL DESIGN DATA AND INFORMATION CONTAINED IN THIS DRAWING. CONTRACTOR TO CONFIRM STRUCTURE MEETS REQUIREMENTS OF PROJECT.
4. STRUCTURE SHALL MEET AASHTO HS-20, ASSUMING EARTH COVER OF 0' - 4', AND GROUNDWATER ELEVATION AT, OR BELOW, THE OUTLET PIPE INVERT ELEVATION. ENGINEER OF RECORD TO CONFIRM ACTUAL GROUNDWATER ELEVATION. CASTINGS SHALL MEET AASHTO M306 LOAD RATING AND BE CAST WITH THE CONTECH LOGO.
5. STRUCTURE SHALL BE PRECAST CONCRETE CONFORMING TO ASTM C-478 AND AASHTO LOAD FACTOR DESIGN METHOD.

INSTALLATION NOTES


- A. ANY SUB-BASE, BACKFILL DEPTH, AND/OR ANTI-FLOTATION PROVISIONS ARE SITE-SPECIFIC DESIGN CONSIDERATIONS AND SHALL BE SPECIFIED BY ENGINEER OF RECORD.
- B. CONTRACTOR TO PROVIDE EQUIPMENT WITH SUFFICIENT LIFTING AND REACH CAPACITY TO LIFT AND SET THE STRUCTURE.
- C. CONTRACTOR WILL INSTALL AND LEVEL THE STRUCTURE, SEALING THE JOINTS, LINE ENTRY AND EXIT POINTS (NON-SHRINK GROUT WITH APPROVED WATERSTOP OR FLEXIBLE BOOT)
- D. WHEN ACTIVATED PRIOR TO SITE STABILIZATION, CONTRACTOR TO PROTECT CARTRIDGES FROM CONSTRUCTION-RELATED EROSION RUNOFF.
- E. CARTRIDGE INSTALLATION, BY CONTECH, SHALL OCCUR ACCORDING TO THE PROVISIONS IN THE ACTIVATION CHECKLIST AND THE QUOTED SCOPE OF WORK. CONTACT CONTECH TO COORDINATE CARTRIDGE INSTALLATION WITH SITE STABILIZATION AT (800) 338-1122.

STRUCTURE WEIGHT

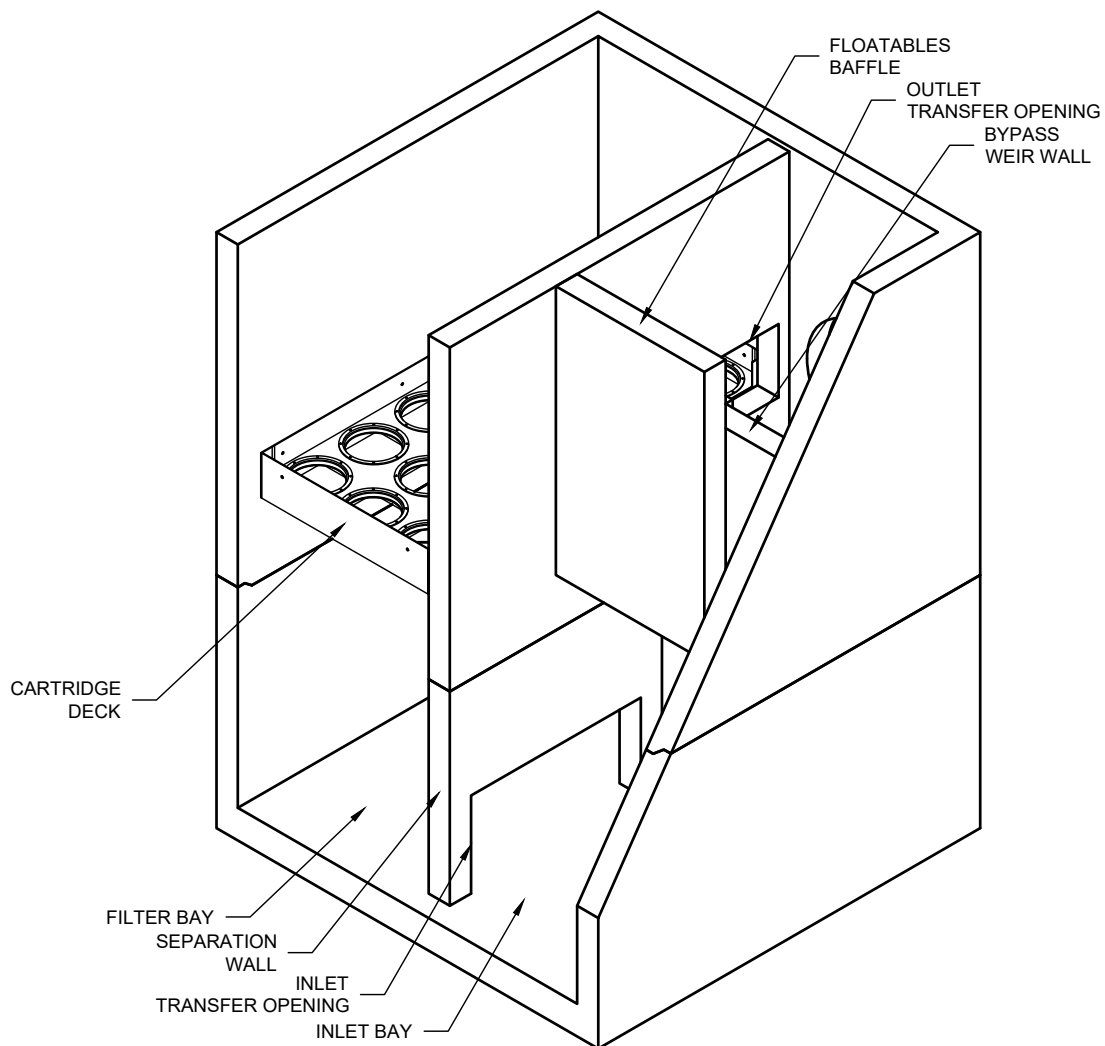
APPROXIMATE HEAVIEST PICK OF (7) PIECES = 26,000 LBS.

CONTECH
CONTRACT
DRAWING

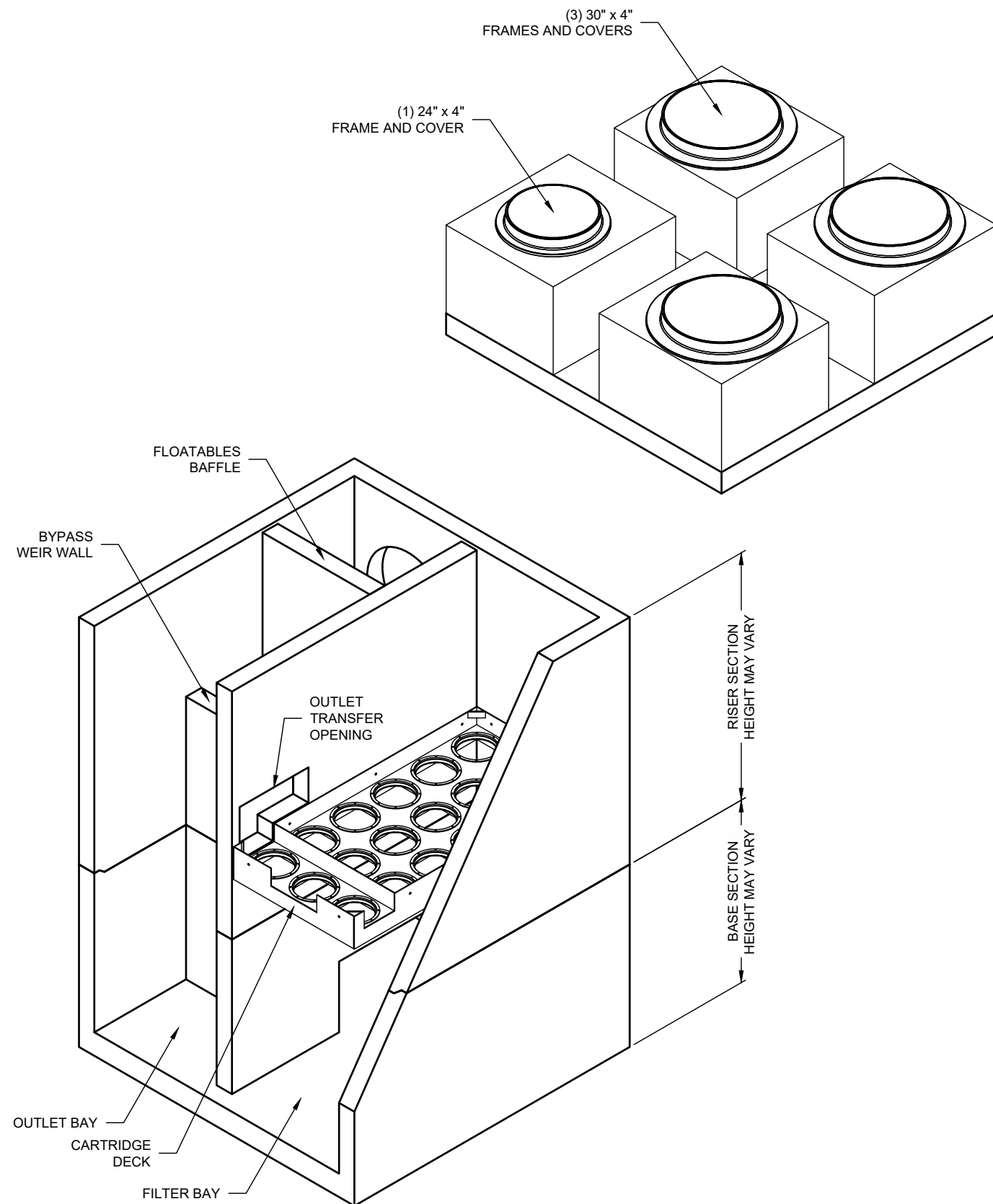
SLY
492043 / 5918
LAYOUT 7
CLASS 600

 <p>CONTECH[®] ENGINEERED SOLUTIONS LLC www.ContechES.com 9525 Center Pointe Dr., Suite 400, West Chester, OH 45386 800-338-1122 513-645-7000 513-645-7993 FAX</p>		<p align="center"> 8' X 8' JELLYFISH - 708308-10 SHAVANO HIGHLANDS HILLTOP SAN ANTONIO, TX SITE DESIGNATION: JF(A) </p>		<p>The design and information shown on this drawing is the property of Contech Engineered Solutions LLC or one of its affiliated companies ("CONTECH"). Neither this drawing, nor any part thereof, may be used, reproduced or modified in any manner without the prior written consent of Contech Engineered Solutions LLC. Contech disclaims any liability or responsibility for such use.</p> <p>If discrepancies between the supplied information upon which this design was based and the actual conditions are encountered as site work progresses, these discrepancies must be reported to the design. CONTECH immediately for re-evaluation of the design. CONTECH accepts no liability for designs based on missing, incomplete or inaccurate information supplied by others.</p>	
<p>DATE: 2/8/2023</p>		<p>MARK</p>		<p>DATE</p>	
<p>DESIGNED: RKD</p>		<p>DRAWN: KOB</p>		<p>REVISION DESCRIPTION</p>	
<p>CHECKED: RKD</p>		<p>APPROVED: RKD</p>		<p>BY</p>	
<p>PROJECT No.: 708308</p>		<p>SEQUENCE No.: 10</p>			
<p>SHEET: 1 OF 2</p>					

ISOMETRIC VIEWS ARE REPRESENTATIONAL. SEE DETAILED FABRICATION DRAWING FOR SITE SPECIFIC DIMENSIONS



NW ISOMETRIC VIEW



SE ISOMETRIC VIEW


CONTECH
CONTRACT
DRAWING

The design and information shown on the drawing is provided as a service to the project owner, engineer and contractor by CONTECH Engineered Solutions LLC or one of its affiliated companies ("CONTECH"). Neither this drawing, nor any part thereof, may be used, reproduced or modified in any manner without the prior written consent of CONTECH. CONTECH expressly disclaims any liability or responsibility for such use.

It is the responsibility of the project owner, engineer and contractor to ensure that the design and information shown on the drawing is used in accordance with the intended purpose. CONTECH does not warrant the accuracy or completeness of the design and information shown on the drawing. CONTECH is not responsible for any errors, omissions, or inaccuracies in the design and information shown on the drawing. CONTECH is not responsible for any damages, losses, or liabilities resulting from the use of the design and information shown on the drawing. CONTECH is not responsible for any claims, damages, or liabilities resulting from the use of the design and information shown on the drawing. CONTECH is not responsible for any claims, damages, or liabilities resulting from the use of the design and information shown on the drawing.

[illegible]

8' X 8' JELLYFISH - 708308-10
SHAVANO HIGHLANDS HILLTOP
SAN ANTONIO, TX
SITE DESIGNATION: JF(A)



ENGINEERED SOLUTIONS LLC
www.ContechES.com
 9025 Centre Pointe Dr., Suite 400, West Chester, OH 45069
 609-338-1122 513-645-7000 513-645-7593 FAX

Jellyfish® Filter

THIS PRODUCT MAY BE PROTECTED BY ONE OR MORE OF THE FOLLOWING PATENTS: 6,812,813; 6,812,814; 6,812,815; 6,812,856; 6,812,857; 6,812,858; 6,812,859; 6,812,860; 6,812,861; 6,812,862; 6,812,863; 6,812,864; 6,812,865; 6,812,866; 6,812,867; 6,812,868; 6,812,869; 6,812,870; 6,812,871; 6,812,872; 6,812,873; 6,812,874; 6,812,875; 6,812,876; 6,812,877; 6,812,878; 6,812,879; 6,812,880; 6,812,881; 6,812,882; 6,812,883; 6,812,884; 6,812,885; 6,812,886; 6,812,887; 6,812,888; 6,812,889; 6,812,890; 6,812,891; 6,812,892; 6,812,893; 6,812,894; 6,812,895; 6,812,896; 6,812,897; 6,812,898; 6,812,899; 6,812,900; 6,812,901; 6,812,902; 6,812,903; 6,812,904; 6,812,905; 6,812,906; 6,812,907; 6,812,908; 6,812,909; 6,812,910; 6,812,911; 6,812,912; 6,812,913; 6,812,914; 6,812,915; 6,812,916; 6,812,917; 6,812,918; 6,812,919; 6,812,920; 6,812,921; 6,812,922; 6,812,923; 6,812,924; 6,812,925; 6,812,926; 6,812,927; 6,812,928; 6,812,929; 6,812,930; 6,812,931; 6,812,932; 6,812,933; 6,812,934; 6,812,935; 6,812,936; 6,812,937; 6,812,938; 6,812,939; 6,812,940; 6,812,941; 6,812,942; 6,812,943; 6,812,944; 6,812,945; 6,812,946; 6,812,947; 6,812,948; 6,812,949; 6,812,950; 6,812,951; 6,812,952; 6,812,953; 6,812,954; 6,812,955; 6,812,956; 6,812,957; 6,812,958; 6,812,959; 6,812,960; 6,812,961; 6,812,962; 6,812,963; 6,812,964; 6,812,965; 6,812,966; 6,812,967; 6,812,968; 6,812,969; 6,812,970; 6,812,971; 6,812,972; 6,812,973; 6,812,974; 6,812,975; 6,812,976; 6,812,977; 6,812,978; 6,812,979; 6,812,980; 6,812,981; 6,812,982; 6,812,983; 6,812,984; 6,812,985; 6,812,986; 6,812,987; 6,812,988; 6,812,989; 6,812,990; 6,812,991; 6,812,992; 6,812,993; 6,812,994; 6,812,995; 6,812,996; 6,812,997; 6,812,998; 6,812,999; 6,813,000; 6,813,001; 6,813,002; 6,813,003; 6,813,004; 6,813,005; 6,813,006; 6,813,007; 6,813,008; 6,813,009; 6,813,010; 6,813,011; 6,813,012; 6,813,013; 6,813,014; 6,813,015; 6,813,016; 6,813,017; 6,813,018; 6,813,019; 6,813,020; 6,813,021; 6,813,022; 6,813,023; 6,813,024; 6,813,025; 6,813,026; 6,813,027; 6,813,028; 6,813,029; 6,813,030; 6,813,031; 6,813,032; 6,813,033; 6,813,034; 6,813,035; 6,813,036; 6,813,037; 6,813,038; 6,813,039; 6,813,040; 6,813,041; 6,813,042; 6,813,043; 6,813,044; 6,813,045; 6,813,046; 6,813,047; 6,813,048; 6,813,049; 6,813,050; 6,813,051; 6,813,052; 6,813,053; 6,813,054; 6,813,055; 6,813,056; 6,813,057; 6,813,058; 6,813,059; 6,813,060; 6,813,061; 6,813,062; 6,813,063; 6,813,064; 6,813,065; 6,813,066; 6,813,067; 6,813,068; 6,813,069; 6,813,070; 6,813,071; 6,813,072; 6,813,073; 6,813,074; 6,813,075; 6,813,076; 6,813,077; 6,813,078; 6,813,079; 6,813,080; 6,813,081; 6,813,082; 6,813,083; 6,813,084; 6,813,085; 6,813,086; 6,813,087; 6,813,088; 6,813,089; 6,813,090; 6,813,091; 6,813,092; 6,813,093; 6,813,094; 6,813,095; 6,813,096; 6,813,097; 6,813,098; 6,813,099; 6,813,100; 6,813,101; 6,813,102; 6,813,103; 6,813,104; 6,813,105; 6,813,106; 6,813,107; 6,813,108; 6,813,109; 6,813,110; 6,813,111; 6,813,112; 6,813,113; 6,813,114; 6,813,115; 6,813,116; 6,813,117; 6,813,118; 6,813,119; 6,813,120; 6,813,121; 6,813,122; 6,813,123; 6,813,124; 6,813,125; 6,813,126; 6,813,127; 6,813,128; 6,813,129; 6,813,130; 6,813,131; 6,813,132; 6,813,133; 6,813,134; 6,813,135; 6,813,136; 6,813,137; 6,813,138; 6,813,139; 6,813,140; 6,813,141; 6,813,142; 6,813,143; 6,813,144; 6,813,145; 6,813,146; 6,813,147; 6,813,148; 6,813,149; 6,813,150; 6,813,151; 6,813,152; 6,813,153; 6,813,154; 6,813,155; 6,813,156; 6,813,157; 6,813,158; 6,813,159; 6,813,160; 6,813,161; 6,813,162; 6,813,163; 6,813,164; 6,813,165; 6,813,166; 6,813,167; 6,813,168; 6,813,169; 6,813,170; 6,813,171; 6,813,172; 6,813,173; 6,813,174; 6,813,175; 6,813,176; 6,813,177; 6,813,178; 6,813,179; 6,813,180; 6,813,181; 6,813,182; 6,813,183; 6,813,184; 6,813,185; 6,813,186; 6,813,187; 6,813,188; 6,813,189; 6,813,190; 6,813,191; 6,813,192; 6,813,193; 6,813,194; 6,813,195; 6,813,196; 6,813,197; 6,813,198; 6,813,199; 6,813,200; 6,813,201; 6,813,202