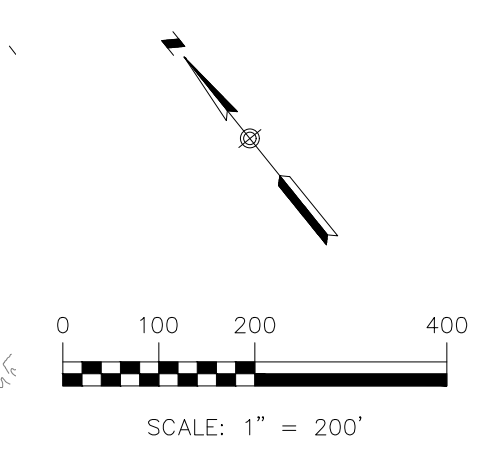
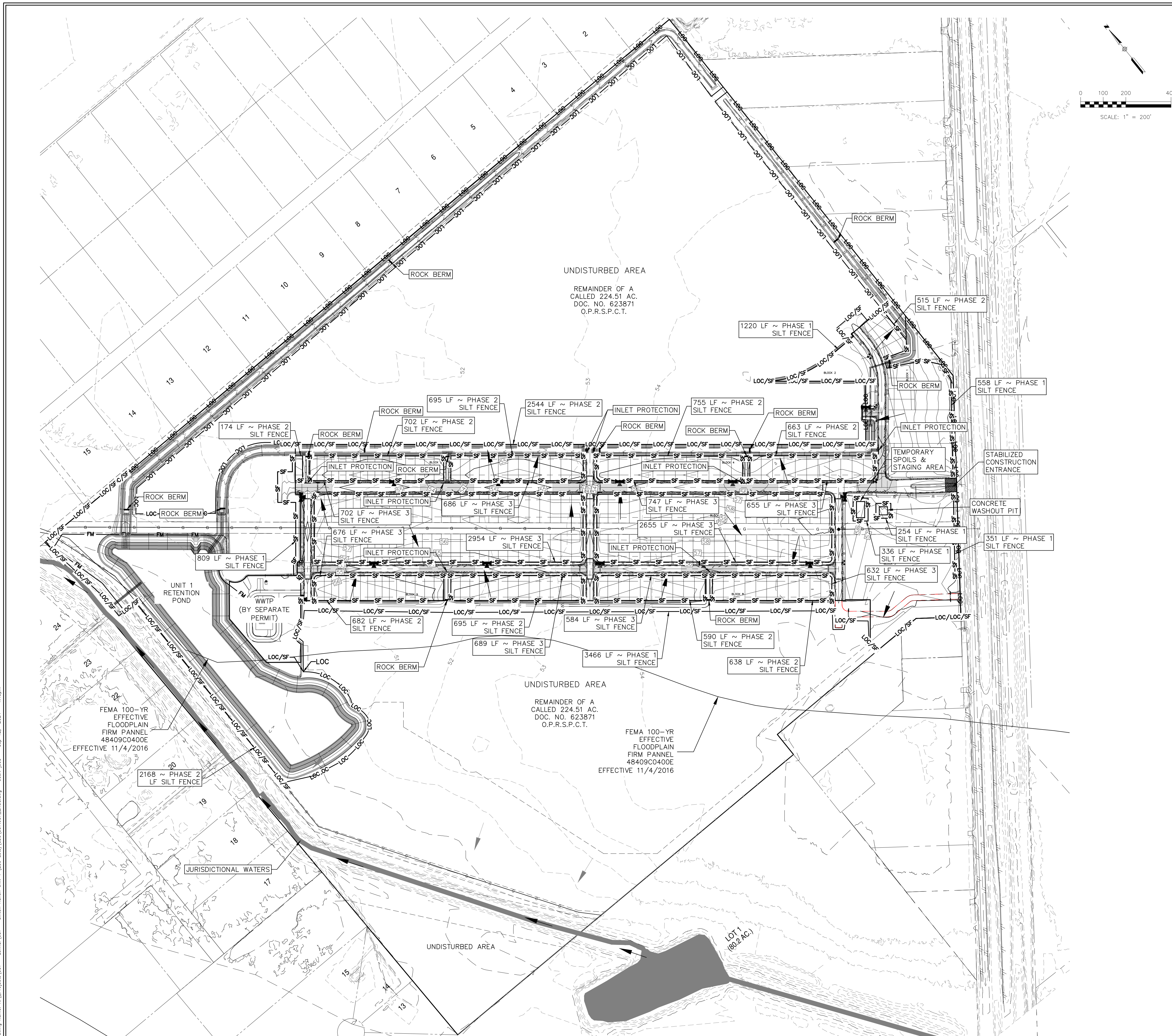


Drawing Name: N:\Projects\337 - Lerner\087 - Sinton Ranch Unit 1 (239 Lots)\CD\337_087_EROSION.dwg User: jcd Sep 12, 2024 - 1:45pm



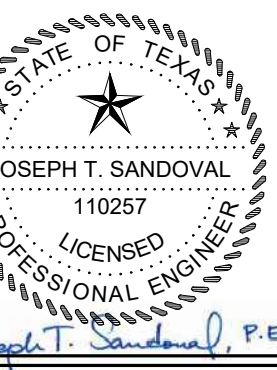
LEGEND

	EXISTING CONTOURS
	PROPOSED CONTOURS
	BUILDING SETBACK LINE
	UTILITY EASEMENT
	DRAINAGE EASEMENT
	DRAINAGE FLOW DIRECTION
	SILT FENCE
	LIMIT OF CONSTRUCTION
	STABILIZED CONSTRUCTION ENTRANCE
	FILTER DIKE CURB INLET PROTECTION
	ROCK BERM (TYPE 2)
	JURISDICTIONAL WATERS

SILT FENCE PHASING:
 PHASE 1: EROSION INFRASTRUCTURE AND PROPERTY BOUNDARY
 PHASE 2: DRAINAGE INFRASTRUCTURE
 PHASE 3: FUTURE LOTS

- NOTE:**
- PER TPDES REQUIREMENTS, DISTURBED AREAS ON WHICH CONSTRUCTION ACTIVITIES HAVE CEASED (TEMPORARILY OR PERMANENT) SHALL BE STABILIZED WITHIN 14 DAYS UNLESS ACTIVITY RESUMES WITHIN 21 DAYS. SEEDING DOES NOT CONSTITUTE AS STABILIZATION.
 - SILT FENCE AT PROPERTY LINE MAY BE SHOWN GRAPHICALLY OFFSET FROM PROPERTY LINE TO AVOID OVERLAP OF LINWORK. CONTRACTOR SHALL NOT INSTALL EROSION CONTROL MEASURES BEYOND LIMITS OF CONSTRUCTION REGARDLESS OF GRAPHIC REPRESENTATION.
 - CONTRACTOR SHALL REFER TO THE GEOTECHNICAL ENGINEERING REPORT FOR THE LOCATION AND DEPTH OF THE GROUNDWATER TABLE FROM THE SURFACE THROUGHOUT THE SITE.

290 S. CASTELL AVE., STE. 100
 NEW BRAUNFELS, TX 78130
 TBPELS FIRM F-10961
 TBPELS FIRM 10153600



9/12/2024

EROSION CONTROL PLAN

SINTON RANCH UNIT 1
 SINTON, TEXAS

NO.	REVISION DESCRIPTION	REVISION DATE

DATE: SEPTEMBER 2024
 DRAWN BY: CAC
 DESIGNED BY: WRC
 REVIEWED BY: JTS
 HMT PROJECT NO.: 337.087

THE LOCATION OF ALL EXISTING UNDERGROUND UTILITIES ARE SHOWN IN APPROXIMATE LOCATIONS ONLY. THE CONTRACTOR SHALL DETERMINE THE EXACT LOCATION OF ALL EXISTING UTILITIES BEFORE COMMENCING WORK. THE CONTRACTOR WILL AGREE TO BE FULLY RESPONSIBLE FOR ANY AND ALL DAMAGES WHICH MIGHT BE INCURRED BY THEIR FAILURE TO EXACTLY LOCATE AND PRESERVE ANY AND ALL UNDERGROUND UTILITIES, STRUCTURES OR FACILITIES. CONTRACTOR SHALL NOTIFY ENGINEER OF ANY DISCREPANCIES 24-HOURS PRIOR TO COMMENCING CONSTRUCTION.

SHEET
C3.00

CONCRETE WASHOUT AREAS

THE PURPOSE OF CONCRETE WASHOUT AREAS IS TO PREVENT OR REDUCE THE DISCHARGE OF POLLUTANTS TO STORMWATER FROM CONCRETE WASTE BY CONDUCTING WASHOUT OFFSITE, PERFORMING ONSITE WASHOUT IN A DESIGNATED AREA, AND TRAINING EMPLOYEES AND SUBCONTRACTORS.

THE FOLLOWING STEPS WILL HELP REDUCE STORMWATER POLLUTION FROM CONCRETE WASTES:

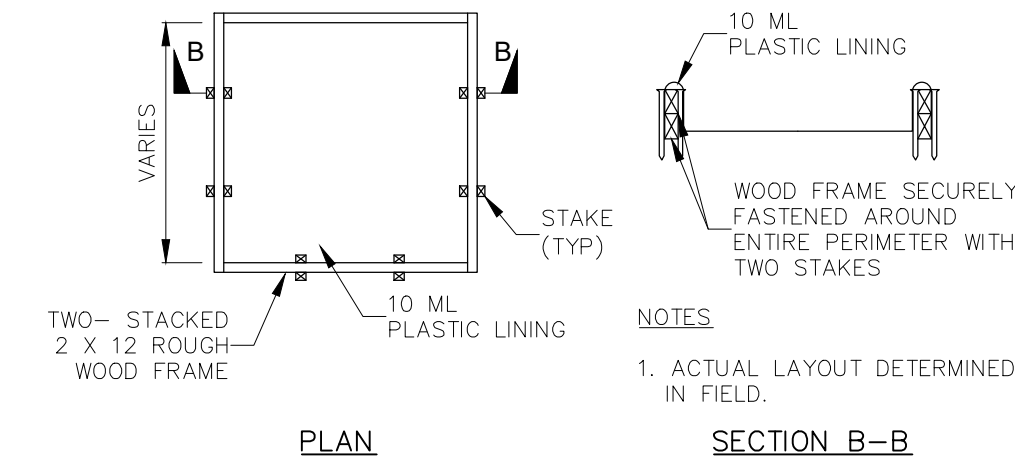
- INCORPORATE REQUIREMENTS FOR CONCRETE WASTE MANAGEMENT INTO MATERIAL SUPPLIER AND SUBCONTRACTOR AGREEMENTS.
- AVOID MIXING EXCESS AMOUNTS OF FRESH CONCRETE.
- PERFORM WASHOUT OF CONCRETE TRUCKS IN DESIGNATED AREAS ONLY.
- DO NOT WASH OUT CONCRETE TRUCKS INTO STORM DRAINS, OPEN DITCHES, STREETS, OR STREAMS.
- DO NOT ALLOW EXCESS CONCRETE TO BE DUMPED ONSITE, EXCEPT IN DESIGNATED AREAS.

FOR ONSITE WASHOUT:

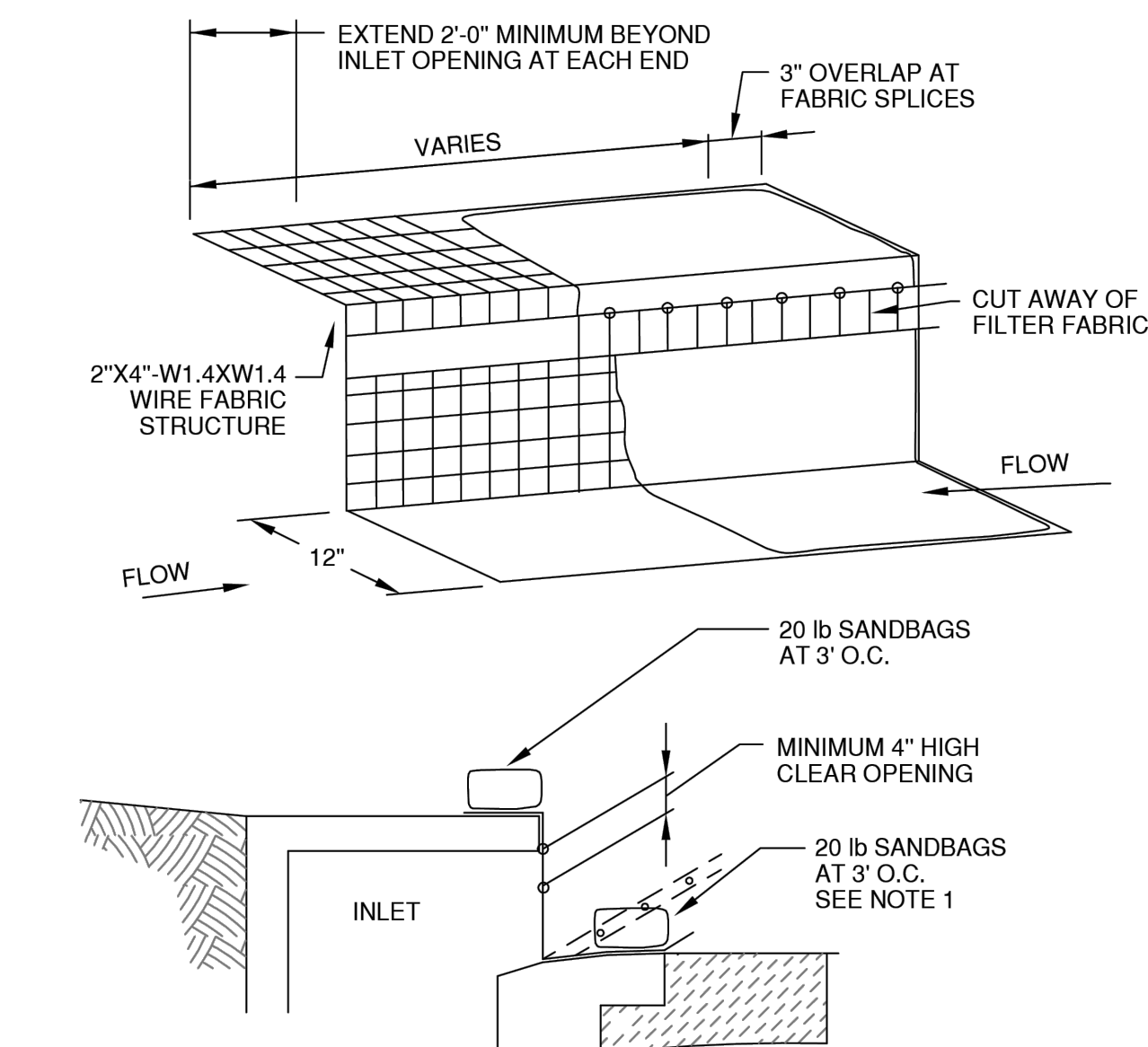
- LOCATE WASHOUT AREA AT LEAST 50 FEET FROM SENSITIVE FEATURES, STORM DRAINS, OPEN DITCHES, OR WATER BODIES. DO NOT ALLOW RUNOFF FROM THIS AREA BY CONSTRUCTING A TEMPORARY PIT OR BERMED AREA LARGE ENOUGH FOR LIQUID AND SOLID WASTE.
- WASH OUT WASTES INTO A TEMPORARY PIT WHERE THE CONCRETE CAN SET, BE BROKEN UP, AND THEN DISPOSED PROPERLY.

BELOW GRADE CONCRETE WASHOUT FACILITIES ARE TYPICAL. THESE CONSIST OF A LINED EXCAVATION SUFFICIENTLY LARGE TO HOLD EXPECTED VOLUME OF WASHOUT MATERIAL. ABOVE GRADE FACILITIES ARE USED IF EXCAVATION IS NOT PRACTICAL. TEMPORARY CONCRETE WASHOUT FACILITY (TYPE ABOVE GRADE) SHOULD BE CONSTRUCTED AS SHOWN ON THE DETAILS AT THE END OF THIS SECTION, WITH SUFFICIENT QUANTITY AND VOLUME TO CONTAIN ALL LIQUID AND CONCRETE WASTE GENERATED BY WASHOUT OPERATIONS. PLASTIC LINING MATERIAL SHOULD BE A MINIMUM OF 10 MIL IN POLYETHYLENE SHEETING AND SHOULD BE FREE OF HOLES, TEARS, OR OTHER DEFECTS THAT COMPROMISE THE IMPERMEABILITY OF THE MATERIAL.

WHEN TEMPORARY CONCRETE WASHOUT FACILITIES ARE NO LONGER REQUIRED FOR THE WORK, THE HARDENED CONCRETE SHOULD BE REMOVED AND DISPOSED OF. MATERIALS USED TO CONSTRUCT TEMPORARY CONCRETE WASHOUT FACILITIES SHOULD BE REMOVED FROM THE SITE OF THE WORK AND DISPOSED OF HOLES, DEPRESSIONS OR OTHER GROUND DISTURBANCE CAUSED BY THE REMOVAL OF THE TEMPORARY CONCRETE WASHOUT FACILITIES SHOULD BE BACKFILLED AND REPAIRED.



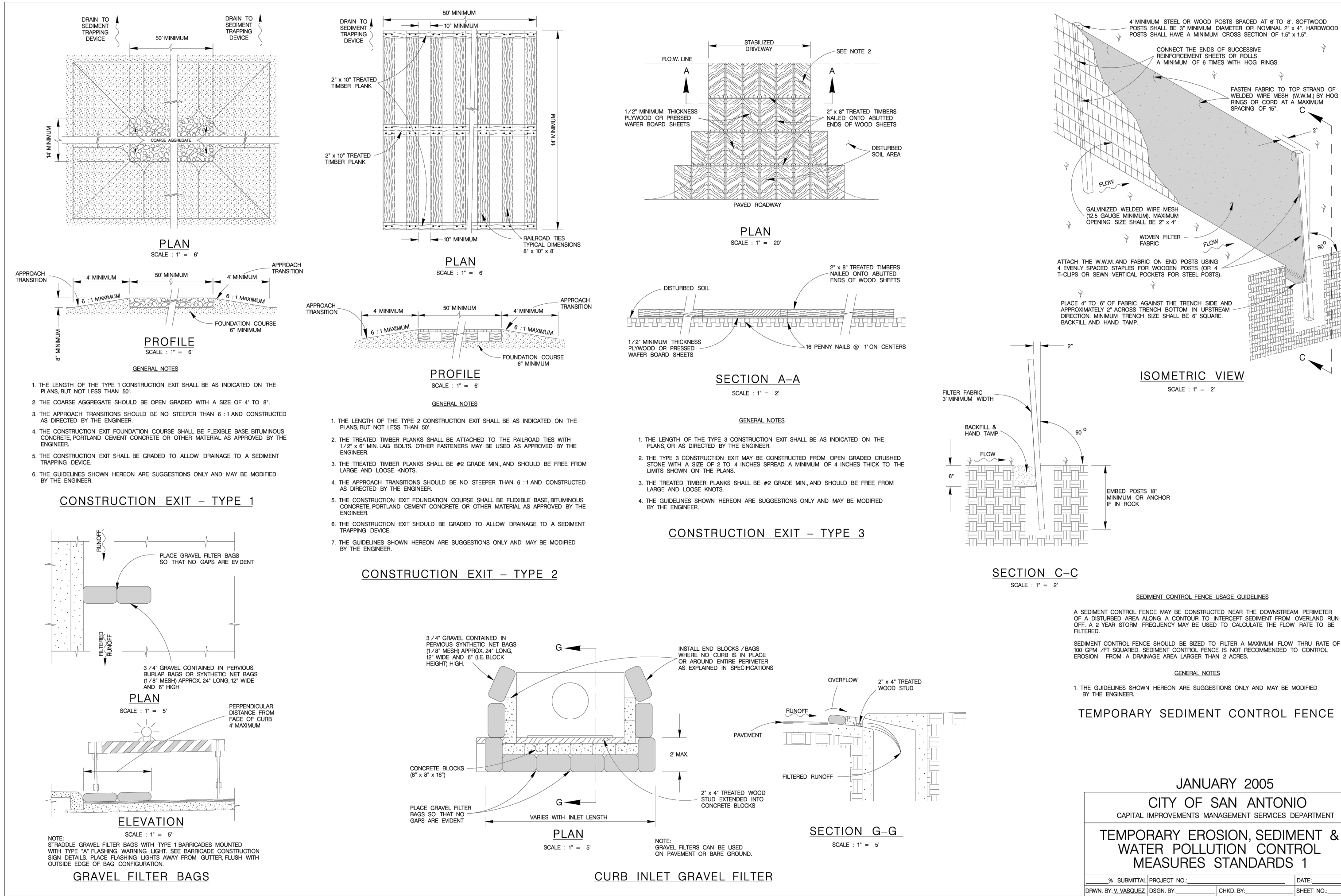
CONCRETE WASHOUT PIT DETAIL
TYPE "ABOVE GRADE"
NOT TO SCALE



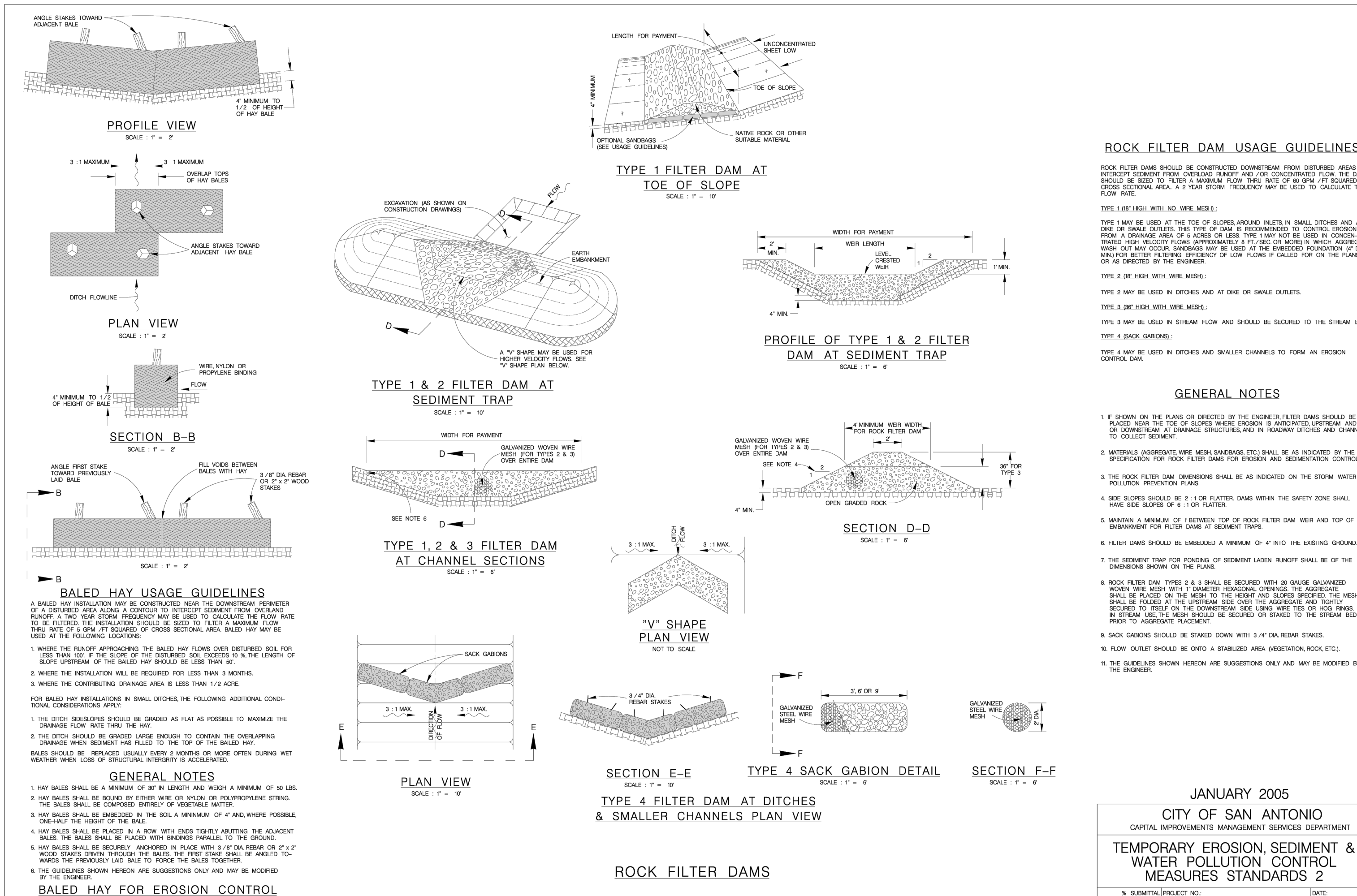
NOTES:

1. WHERE MINIMUM CLEARANCES CAUSE TRAFFIC TO DRIVE IN THE GUTTER, THE CONTRACTOR MAY SUBSTITUTE A 1" X 4" BOARD SECURED WITH CONCRETE NAILS 3" O.C. NAILED INTO THE GUTTER IN LIEU OF SANDBAGS TO HOLD THE FILTER DIKE IN PLACE. UPON REMOVAL, CLEAN ANY DIRT/DEBRIS FROM NAILING LOCATIONS, APPLY CHEMICAL SANDING AGENT AND APPLY NON-SHRINK GROUT FLUSH WITH SURFACE OF GUTTER.
2. A SECTION OF FILTER FABRIC SHALL BE REMOVED AS SHOWN ON THIS DETAIL OR AS DIRECTED BY THE ENGINEER OR DESIGNATED REPRESENTATIVE. FABRIC MUST BE SECURED TO WIRE BACKING WITH CLIPS OR HOG RINGS AT THIS LOCATION.
3. DAILY INSPECTION SHALL BE MADE BY THE CONTRACTOR AND SILT ACCUMULATION MUST BE REMOVED WHEN DEPTH REACHES 2".
4. CONTRACTOR SHALL MONITOR THE PERFORMANCE OF INLET PROTECTION DURING EACH RAINFALL EVENT AND IMMEDIATELY REMOVE THE INLET PROTECTIONS IF THE STORM-WATER BEGINS TO OVER-TOP THE CURB.
5. INLET PROTECTIONS SHALL BE REMOVED AS SOON AS THE SOURCE OF SEDIMENT IS STABILIZED.

	DRAWN BY: H Shadrock APPROVED BY:	STANDARD DRAWING: FILTER DIKE CURB INLET PROTECTION
	UPDATED: 4-29-03 SCALE: N.T.S. SHEET: 1 OF 1 DRAWING NO.: 505	



JANUARY 2005
CITY OF SAN ANTONIO
CAPITAL IMPROVEMENTS MANAGEMENT SERVICES DEPARTMENT
TEMPORARY EROSION, SEDIMENT & WATER POLLUTION CONTROL MEASURES STANDARDS 1



JANUARY 2005
CITY OF SAN ANTONIO
CAPITAL IMPROVEMENTS MANAGEMENT SERVICES DEPARTMENT
TEMPORARY EROSION, SEDIMENT & WATER POLLUTION CONTROL MEASURES STANDARDS 2

SEQUENCE OF CONSTRUCTION

1. INSTALL EROSION CONTROLS PER APPROVED PLAN.
2. TEMPORARY CONTROLS TO BE INSPECTED AND MAINTAINED WEEKLY AND PRIOR TO ANTICIPATED RAINFALL EVENTS, AND AFTER RAINFALL EVENTS, AS NEEDED. CONTRACTOR/OWNER SHALL PROVIDE A CONTACT NAME AND NUMBER FOR EROSION CONTROL ISSUES.
3. CONDUCT DEMOLITION ACTIVITIES, IF APPLICABLE.
4. CONSTRUCT DRAINAGE IMPROVEMENTS, IF APPLICABLE.
5. CONSTRUCT CURB INLET PROTECTION AT THE TIME OF CURB INLET INSTALLATION.
6. CONSTRUCT DEVELOPMENT PER APPROVED PLANS.
7. INSTALL STREETScape AND/OR LANDSCAPING IMPROVEMENTS.
8. CONTRACTOR TO VEGETATE ANY DISTURBED AREAS ONCE FINAL GRADING IS COMPLETE, AND ESTABLISH A MIN. OF 70% VEGETATION PRIOR TO COMPLETION. PER TPDES REQUIREMENTS, DISTURBED AREAS ON WHICH CONSTRUCTION ACTIVITIES HAVE CEASED (TEMPORARILY OR PERMANENTLY) SHALL BE STABILIZED WITHIN 14 DAYS UNLESS ACTIVITY RESUMES WITHIN 21 DAYS. SEEDING DOES NOT CONSTITUTE AS STABILIZATION.
9. REMOVE ALL TEMPORARY EROSION CONTROL MEASURES.

NOTE:

CONTRACTOR SHALL BE RESPONSIBLE FOR ALL DISTURBED AREAS ON WHICH CONSTRUCTION ACTIVITIES HAVE CEASED (TEMPORARILY OR PERMANENT) AND SHALL BE STABILIZED WITHIN 14 DAYS UNLESS ACTIVITY RESUMES IN 21 DAYS, PER TPDES REQUIREMENTS.

290 S. CASTELL AVE., STE. 100
NEW BRAUNFELS, TX 78130
TBPELS FIRM F-10961
TBPELS FIRM 10153600



9/12/2024

EROSION CONTROL
DETAILS 1 OF 2
SINTON RANCH UNIT 1
SINTON, TEXAS

NO.	REVISION DESCRIPTION	DATE

DATE: SEPTEMBER 2024
DRAWN BY: CAC
DESIGNED BY: WRC
REVIEWED BY: JTS

HMT PROJECT NO.: 337.087
SHEET C3.01

THE LOCATION OF ALL EXISTING UNDERGROUND UTILITIES ARE SHOWN IN APPROXIMATE LOCATIONS ONLY. THE CONTRACTOR SHALL DETERMINE THE EXACT LOCATION OF ALL EXISTING UTILITIES BEFORE COMMENCING WORK. THE CONTRACTOR WILL AGREE TO BE FULLY RESPONSIBLE FOR ANY AND ALL DAMAGES WHICH MIGHT BE INCURRED BY THEIR FAILURE TO EXACTLY LOCATE AND PRESERVE ANY AND ALL UNDERGROUND UTILITIES, STRUCTURES OR FACILITIES. CONTRACTOR SHALL NOTIFY ENGINEER OF ANY DISCREPANCIES 24-HOURS PRIOR TO COMMENCING CONSTRUCTION.

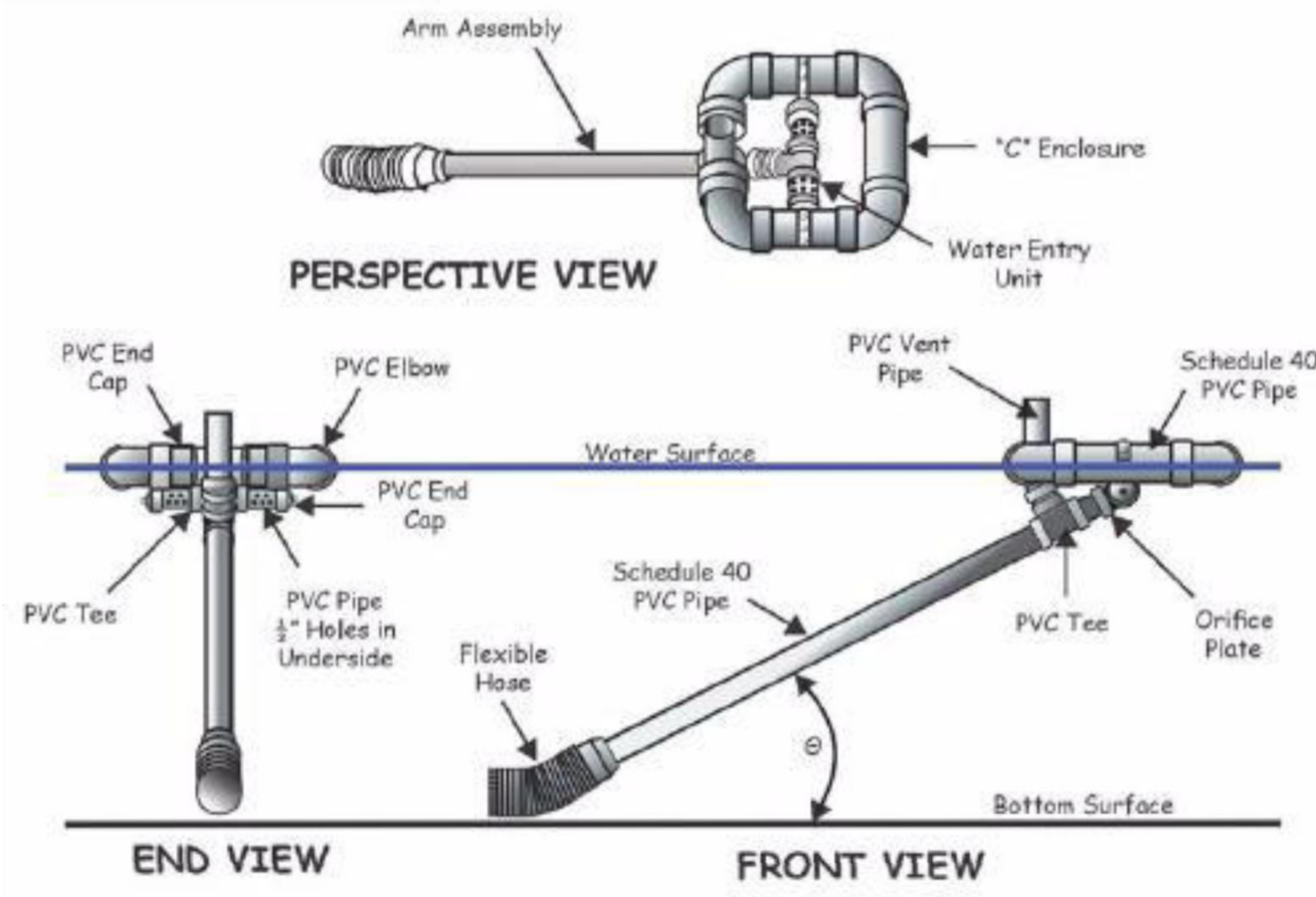
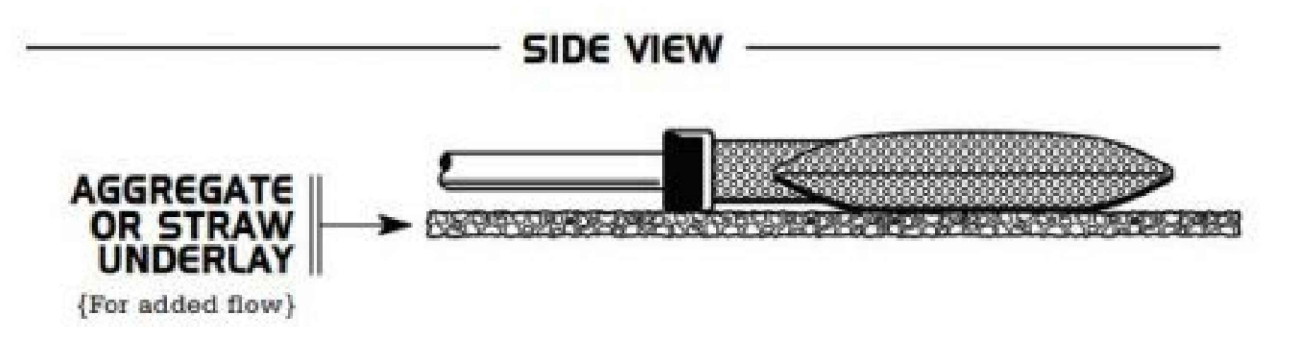
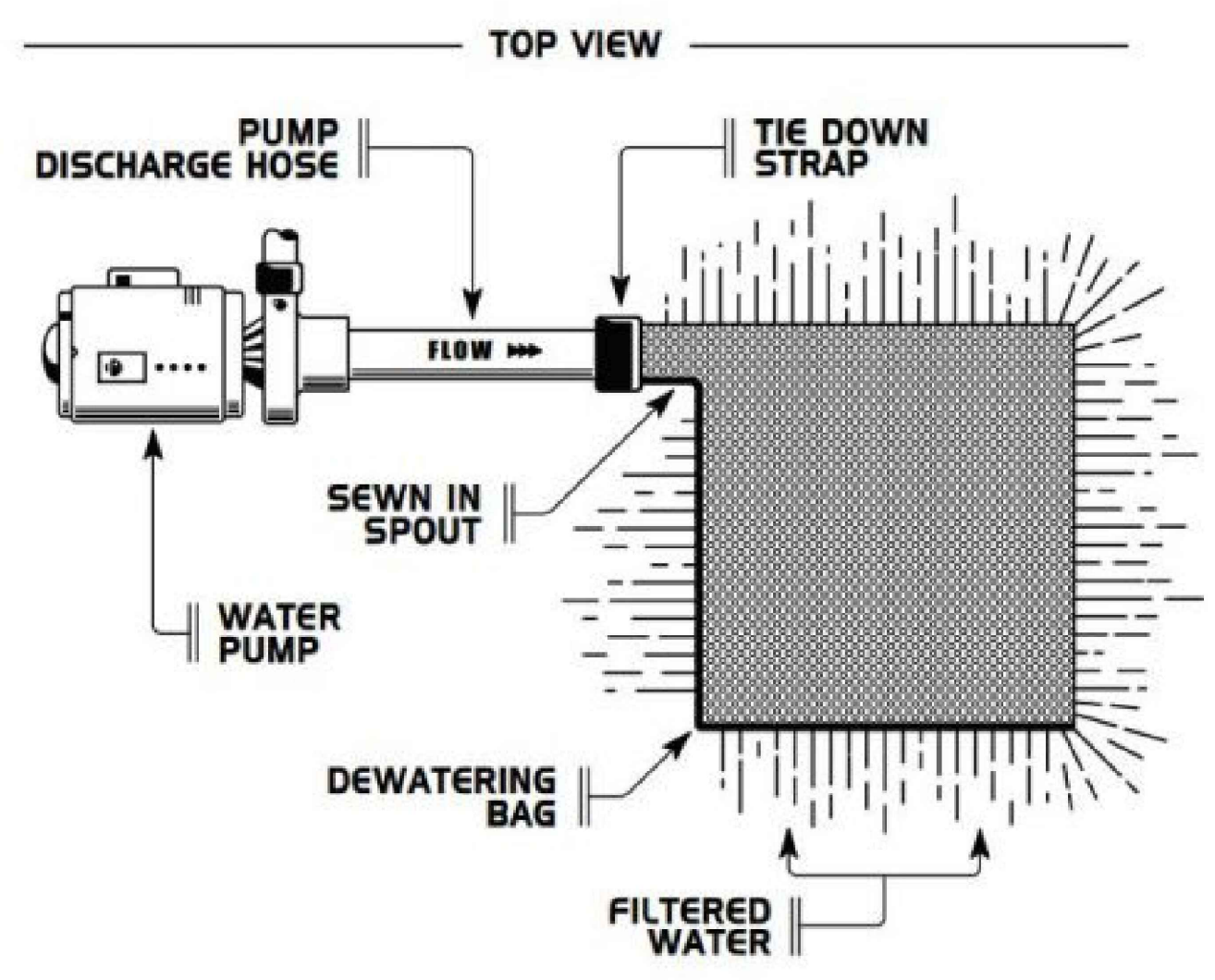


Figure 6.64a Schematic of a skimmer, from Pennsylvania Erosion and Sediment Pollution Control Manual, March, 2000.

NOTE:
 CONTRACTOR SHALL USE THIS DEWATERING SKIMMER & SEDIMENT BAG CONFIGURATION FOR ALL DEWATERING.

DANDY DEWATERING BAG™



Drawing Name: N:\Projects\337 - Lennor\887 - Sinton Ranch Unit 1 (239 Lots)\CD\337_087_EROSION.dwg User: ped Sep 12, 2024 - 11:50am

290 S. CASTELL AVE., STE. 100
 NEW BRAUNFELS, TX 78130
 TBPELS FIRM F-10961
 TBPELS FIRM 10153600



9/12/2024

**EROSION CONTROL
 DETAILS 2 OF 2**
 SINTON RANCH UNIT 1
 SINTON, TEXAS

NO.	REVISION DESCRIPTION	REVISION DATE

DATE: **SEPTEMBER 2024**
 DRAWN BY: **CAC**
 DESIGNED BY: **WRC**
 REVIEWED BY: **JTS**

HMT PROJECT NO.:
337.087

**SHEET
 C3.02**

THE LOCATION OF ALL EXISTING UNDERGROUND UTILITIES ARE SHOWN IN APPROXIMATE LOCATIONS ONLY. THE CONTRACTOR SHALL DETERMINE THE EXACT LOCATION OF ALL EXISTING UTILITIES BEFORE COMMENCING WORK. THE CONTRACTOR WILL AGREE TO BE FULLY RESPONSIBLE FOR ANY AND ALL DAMAGES WHICH MIGHT BE INCURRED BY THEIR FAILURE TO EXACTLY LOCATE AND PRESERVE ANY AND ALL UNDERGROUND UTILITIES, STRUCTURES OR FACILITIES. CONTRACTOR SHALL NOTIFY ENGINEER OF ANY DISCREPANCIES 24-HOURS PRIOR TO COMMENCING CONSTRUCTION.