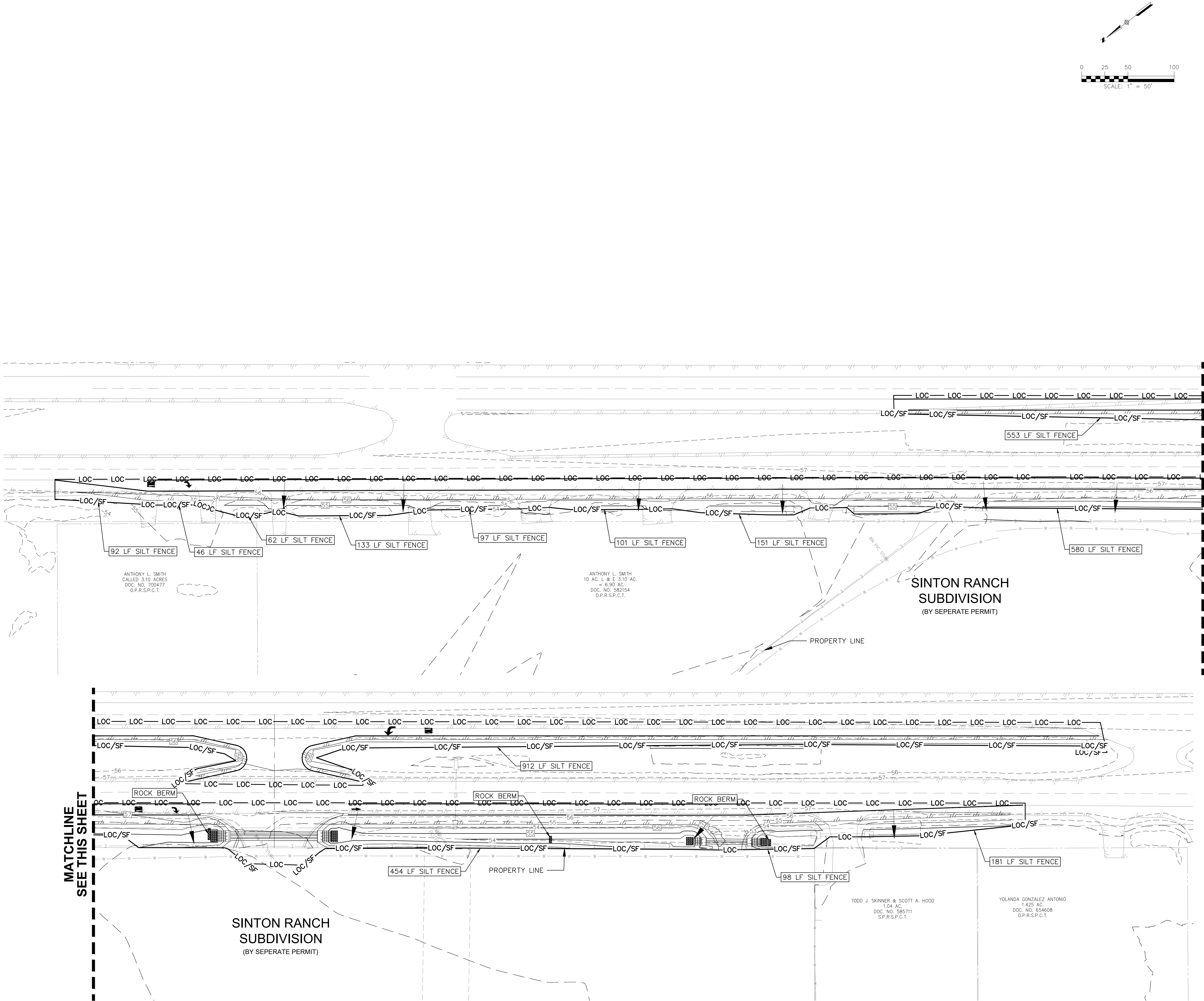


Drawing Name: N:_Projects\337 - Sinton Ranch - Sinton Ranch - Master Plan\CDs\TxDOT\337_085_TxDOT EROS.dwg User: caribac Sep 12, 2024 - 2:02pm



- LEGEND**
- 700 — EXISTING CONTOURS
 - 700 — PROPOSED CONTOURS
 - U.E. UTILITY EASEMENT
 - D.E. DRAINAGE EASEMENT
 - DRAINAGE FLOW DIRECTION
 - SF — SF — SILT FENCE
 - LOC — LOC — LIMIT OF CONSTRUCTION
 - ROCK BERM (TYPE 2)

NOTE:

PER TPDES REQUIREMENTS, DISTURBED AREAS ON WHICH CONSTRUCTION ACTIVITIES HAVE CEASED (TEMPORARILY OR PERMANENT) SHALL BE STABILIZED WITHIN 14 DAYS UNLESS ACTIVITY RESUMES WITHIN 21 DAYS. SEEDING DOES NOT CONSTITUTE AS STABILIZATION.

SILT FENCE AT PROPERTY LINE MAY BE SHOWN GRAPHICALLY OFFSET FROM PROPERTY LINE TO AVOID OVERLAP OF LINEWORK. CONTRACTOR SHALL NOT INSTALL EROSION CONTROL MEASURES BEYOND LIMITS OF CONSTRUCTION REGARDLESS OF GRAPHIC REPRESENTATION.

- SEQUENCE OF CONSTRUCTION**
1. INSTALL EROSION CONTROLS PER APPROVED PLAN.
 2. TEMPORARY CONTROLS TO BE INSPECTED AND MAINTAINED WEEKLY AND PRIOR TO ANTICIPATED RAINFALL EVENTS, AND AFTER RAINFALL EVENTS, AS NEEDED. CONTRACTOR/OWNER SHALL PROVIDE A CONTACT NAME AND NUMBER FOR EROSION CONTROL ISSUES.
 3. CONDUCT DEMOLITION ACTIVITIES, IF APPLICABLE.
 4. CONSTRUCT DRAINAGE IMPROVEMENTS, IF APPLICABLE.
 5. CONSTRUCT CURB INLET PROTECTION AT THE TIME OF CURB INLET INSTALLATION.
 6. CONSTRUCT DEVELOPMENT PER APPROVED PLANS.
 7. INSTALL STREETSCAPE AND/OR LANDSCAPING IMPROVEMENTS.
 8. CONTRACTOR TO VEGETATE ANY DISTURBED AREAS ONCE FINAL GRADING IS COMPLETE, AND ESTABLISH A MIN OF 70% VEGETATION PRIOR TO COMPLETION. PER TPDES REQUIREMENTS, DISTURBED AREAS ON WHICH CONSTRUCTION ACTIVITIES HAVE CEASED (TEMPORARILY OR PERMANENTLY) SHALL BE STABILIZED WITHIN 14 DAYS UNLESS ACTIVITY RESUMES WITHIN 21 DAYS. SEEDING DOES NOT CONSTITUTE AS STABILIZATION.
 9. REMOVE ALL TEMPORARY EROSION CONTROL MEASURES.

NOTE:

PER TPDES REQUIREMENTS, DISTURBED AREAS ON WHICH CONSTRUCTION ACTIVITIES HAVE CEASED (TEMPORARILY OR PERMANENT) SHALL BE STABILIZED WITHIN 14 DAYS UNLESS ACTIVITY RESUMES WITHIN 21 DAYS. SEEDING DOES NOT CONSTITUTE AS STABILIZATION.

SILT FENCE AT PROPERTY LINE MAY BE SHOWN GRAPHICALLY OFFSET FROM PROPERTY LINE TO AVOID OVERLAP OF LINEWORK. CONTRACTOR SHALL NOT INSTALL EROSION CONTROL MEASURES BEYOND LIMITS OF CONSTRUCTION REGARDLESS OF GRAPHIC REPRESENTATION.

THE LOCATION OF ALL EXISTING UNDERGROUND UTILITIES ARE SHOWN IN APPROXIMATE LOCATIONS ONLY. THE CONTRACTOR SHALL DETERMINE THE EXACT LOCATION OF ALL EXISTING UTILITIES BEFORE COMMENCING WORK. THE CONTRACTOR WILL AGREE TO BE FULLY RESPONSIBLE FOR ANY AND ALL DAMAGES WHICH MIGHT BE INCURRED BY THEIR FAILURE TO EXACTLY LOCATE AND PRESERVE ANY AND ALL UNDERGROUND UTILITIES, STRUCTURES OR FACILITIES. CONTRACTOR SHALL NOTIFY ENGINEER OF ANY DISCREPANCIES 24-HOURS PRIOR TO COMMENCING CONSTRUCTION.

290 S. CASTELL AVE., STE. 100
NEW BRAUNFELS, TX 78130
TBPELS FIRM F-10961
TBPELS FIRM 10153600

HMT
ENGINEERING & SURVEYING

JOSEPH T. SANDOVAL
110257
LICENSED PROFESSIONAL ENGINEER
Joseph T. Sandoval P.E.

9/12/2024

EROSION CONTROL PLAN

SINTON RANCH
TXDOT IMPROVEMENTS
SINTON, TEXAS

| NO. | REVISION DESCRIPTION | REVISION DATE |
|-----|----------------------|---------------|
| | | |
| | | |
| | | |
| | | |
| | | |
| | | |
| | | |
| | | |
| | | |

DATE: SEPTEMBER 2024
DRAWN BY: CAC
DESIGNED BY: JTS
REVIEWED BY: JTS
HMT PROJECT NO.: 337.085

SHEET
C2.00

CONCRETE WASHOUT AREAS

THE PURPOSE OF CONCRETE WASHOUT AREAS IS TO PREVENT OR REDUCE THE DISCHARGE OF POLLUTANTS TO STORMWATER FROM CONCRETE WASTE BY CONDUCTING WASHOUT OFFSITE, PERFORMING ONSITE WASHOUT IN A DESIGNATED AREA, AND TRAINING EMPLOYEES AND SUBCONTRACTORS.

THE FOLLOWING STEPS WILL HELP REDUCE STORMWATER POLLUTION FROM CONCRETE WASTES:

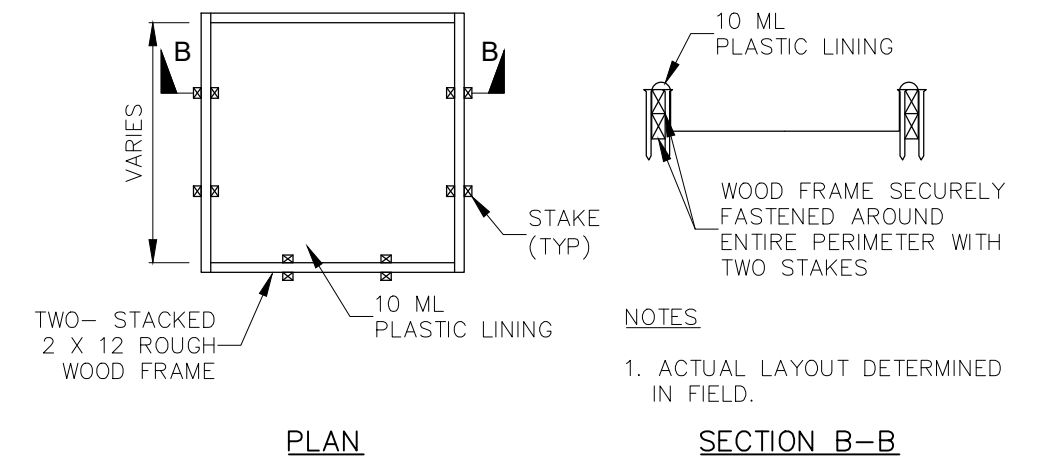
- INCORPORATE REQUIREMENTS FOR CONCRETE WASTE MANAGEMENT INTO MATERIAL SUPPLIER AND SUBCONTRACTOR AGREEMENTS.
- AVOID MIXING EXCESS AMOUNTS OF FRESH CONCRETE.
- PERFORM WASHOUT OF CONCRETE TRUCKS IN DESIGNATED AREAS ONLY.
- DO NOT WASH OUT CONCRETE TRUCKS INTO STORM DRAINS, OPEN DITCHES, STREETS, OR STREAMS.
- DO NOT ALLOW EXCESS CONCRETE TO BE DUMPED ONSITE, EXCEPT IN DESIGNATED AREAS.

FOR ONSITE WASHOUT:

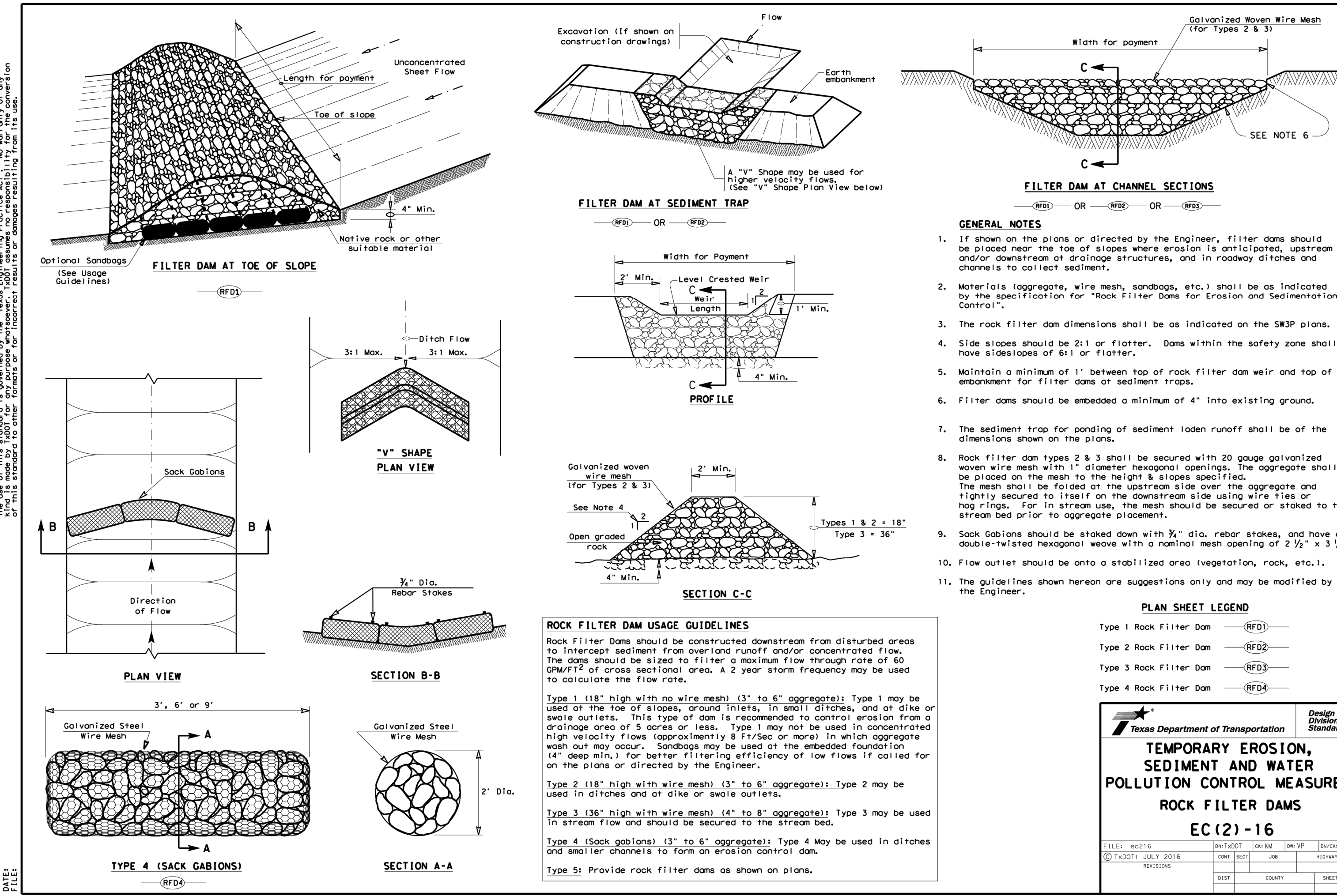
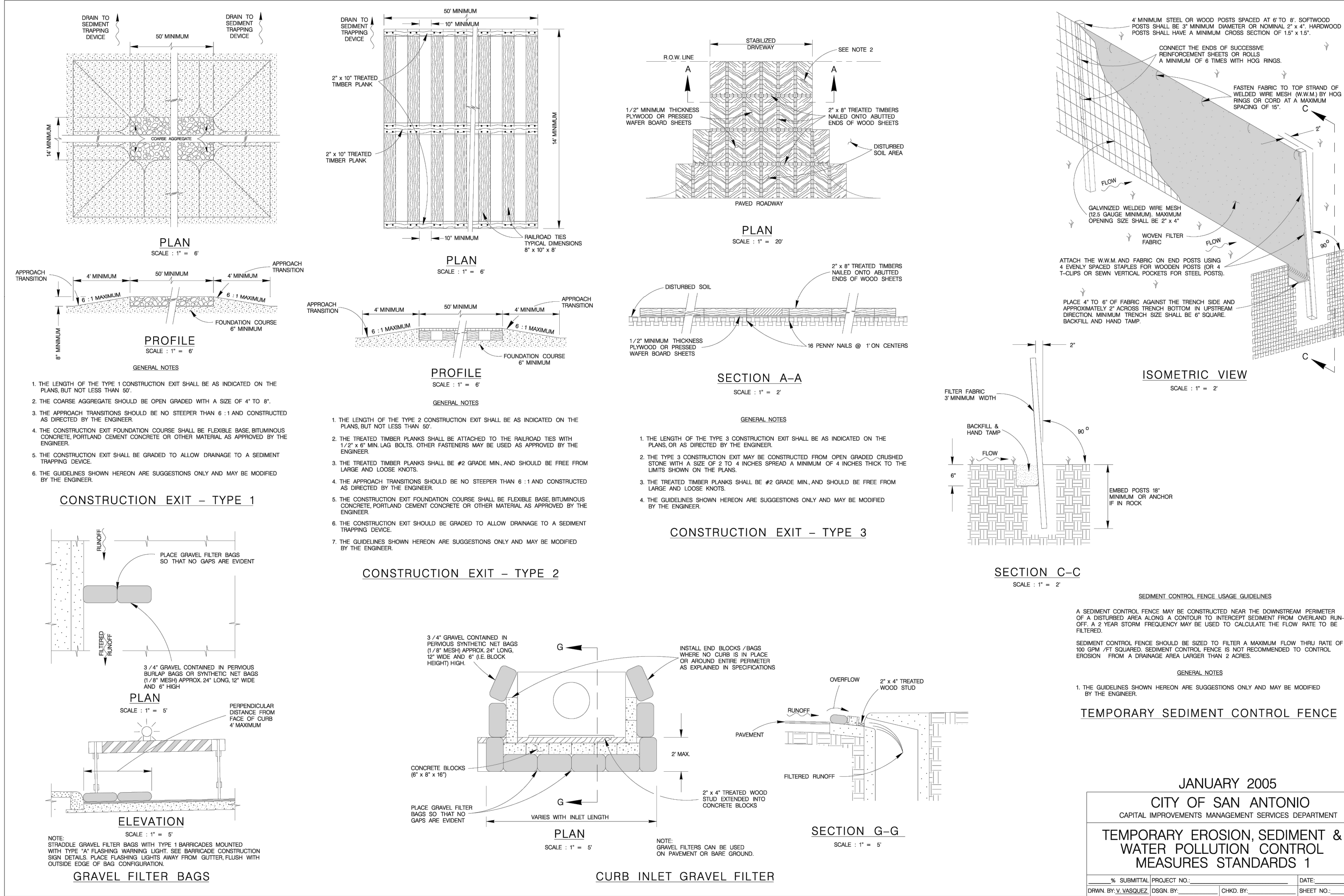
- LOCATE WASHOUT AREA AT LEAST 50 FEET FROM SENSITIVE FEATURES, STORM DRAINS, OPEN DITCHES, OR WATER BODIES. DO NOT ALLOW RUNOFF FROM THIS AREA BY CONSTRUCTING A TEMPORARY PIT OR BERMED AREA LARGE ENOUGH FOR LIQUID AND SOLID WASTE.
- WASH OUT WASTES INTO THE TEMPORARY PIT WHERE THE CONCRETE CAN SET, BE BROKEN UP, AND THEN DISPOSED PROPERLY.

BELOW GRADE CONCRETE WASHOUT FACILITIES ARE TYPICAL. THESE CONSIST OF A LINED EXCAVATION SUFFICIENTLY LARGE TO HOLD EXPECTED VOLUME OF WASHOUT MATERIAL. ABOVE GRADE FACILITIES ARE USED IF EXCAVATION IS NOT PRACTICAL. TEMPORARY CONCRETE WASHOUT FACILITY (TYPE ABOVE GRADE) SHOULD BE CONSTRUCTED AS SHOWN ON THE DETAILS AT THE END OF THIS SECTION, WITH SUFFICIENT QUANTITY AND VOLUME TO CONTAIN ALL LIQUID AND CONCRETE WASTE GENERATED BY WASHOUT OPERATIONS. PLASTIC LINING MATERIAL SHOULD BE A MINIMUM OF 10 MIL IN POLYETHYLENE SHEETING AND SHOULD BE FREE OF HOLES, TEARS, OR OTHER DEFECTS THAT COMPROMISE THE IMPERMEABILITY OF THE MATERIAL.

WHEN TEMPORARY CONCRETE WASHOUT FACILITIES ARE NO LONGER REQUIRED FOR THE WORK, THE HARDENED CONCRETE SHOULD BE REMOVED AND DISPOSED OF. MATERIALS USED TO CONSTRUCT TEMPORARY CONCRETE WASHOUT FACILITIES SHOULD BE REMOVED FROM THE SITE OF THE WORK AND DISPOSED OF HOLES, DEPRESSIONS OR OTHER GROUND DISTURBANCE CAUSED BY THE REMOVAL OF THE TEMPORARY CONCRETE WASHOUT FACILITIES SHOULD BE BACKFILLED AND REPAIRED.



CONCRETE WASHOUT PIT DETAIL
TYPE "ABOVE GRADE"
NOT TO SCALE



SEQUENCE OF CONSTRUCTION

1. INSTALL EROSION CONTROLS PER APPROVED PLAN.
2. TEMPORARY CONTROLS TO BE INSPECTED AND MAINTAINED WEEKLY AND PRIOR TO ANTICIPATED RAINFALL EVENTS, AND AFTER RAINFALL EVENTS, AS NEEDED, CONTRACTOR/OWNER SHALL PROVIDE A CONTACT NAME AND NUMBER FOR EROSION CONTROL ISSUES.
3. CONDUCT DEMOLITION ACTIVITIES, IF APPLICABLE.
4. CONSTRUCT DRAINAGE IMPROVEMENTS, IF APPLICABLE.
5. CONSTRUCT CURB INLET PROTECTION AT THE TIME OF CURB INLET INSTALLATION.
6. CONSTRUCT DEVELOPMENT PER APPROVED PLANS.
7. INSTALL STREETScape AND/OR LANDSCAPING IMPROVEMENTS.
8. CONTRACTOR TO VEGETATE ANY DISTURBED AREAS ONCE FINAL GRADING IS COMPLETE, AND ESTABLISH A MIN OF 70% VEGETATION PRIOR TO COMPLETION. PER TPDES REQUIREMENTS, DISTURBED AREAS ON WHICH CONSTRUCTION ACTIVITIES HAVE CEASED (TEMPORARILY OR PERMANENTLY) SHALL BE STABILIZED WITHIN 14 DAYS UNLESS ACTIVITY RESUMES WITHIN 21 DAYS. SEEDING DOES NOT CONSTITUTE AS STABILIZATION.
9. REMOVE ALL TEMPORARY EROSION CONTROL MEASURES.

NOTE:
CONTRACTOR SHALL BE RESPONSIBLE FOR ALL DISTURBED AREAS ON WHICH CONSTRUCTION ACTIVITIES HAVE CEASED (TEMPORARILY OR PERMANENT) AND SHALL BE STABILIZED WITHIN 14 DAYS UNLESS ACTIVITY RESUMES IN 21 DAYS, PER TPDES REQUIREMENTS.

NOTE:
PER TPDES REQUIREMENTS, DISTURBED AREAS ON WHICH CONSTRUCTION ACTIVITIES HAVE CEASED (TEMPORARILY OR PERMANENT) SHALL BE STABILIZED WITHIN 14 DAYS UNLESS ACTIVITY RESUMES WITHIN 21 DAYS. SEEDING DOES NOT CONSTITUTE AS STABILIZATION.

SILT FENCE AT PROPERTY LINE MAY BE SHOWN GRAPHICALLY OFFSET FROM PROPERTY LINE TO AVOID OVERLAP OF LINEWORK. CONTRACTOR SHALL NOT INSTALL EROSION CONTROL MEASURES BEYOND LIMITS OF CONSTRUCTION REGARDLESS OF GRAPHIC REPRESENTATION.

9/12/2024

EROSION CONTROL DETAILS

SINTON RANCH
TXDOT IMPROVEMENTS
SINTON, TEXAS

| NO. | REVISION | DESCRIPTION | DATE |
|-----|----------|-------------|------|
| | | | |
| | | | |
| | | | |
| | | | |
| | | | |
| | | | |
| | | | |
| | | | |
| | | | |