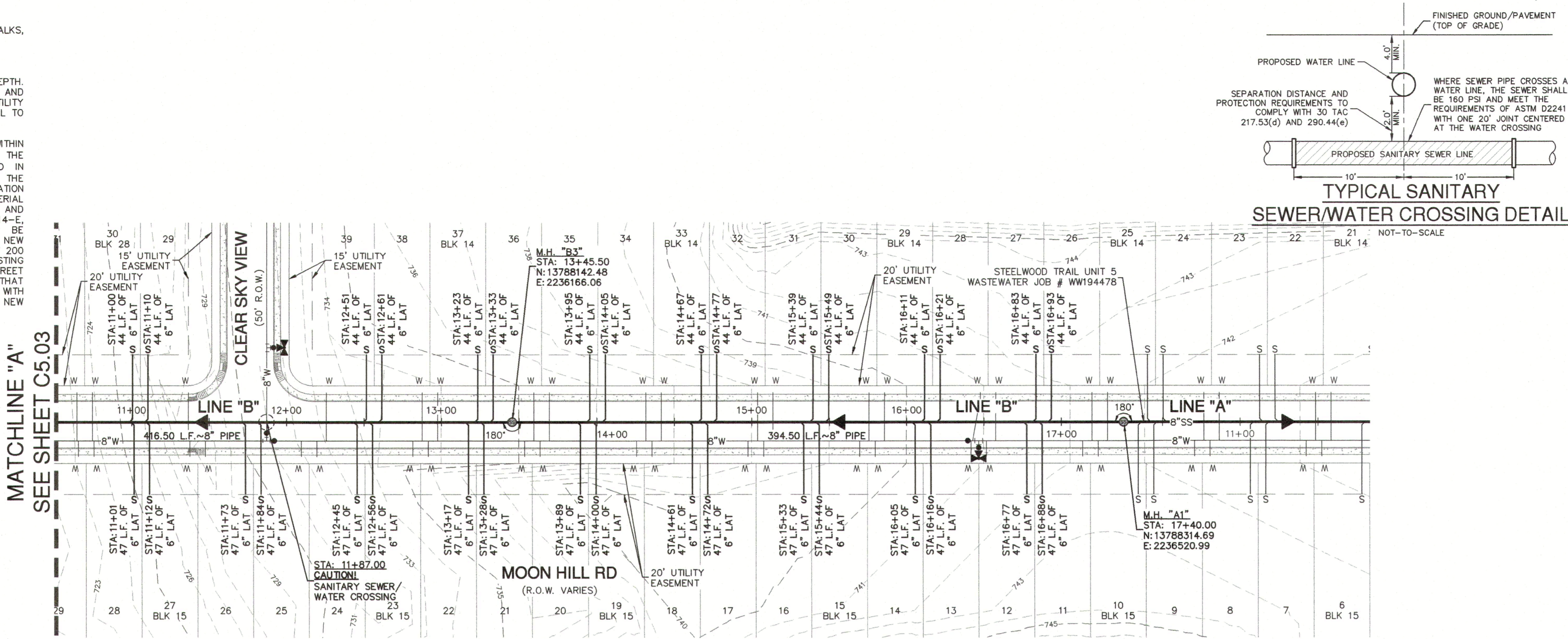
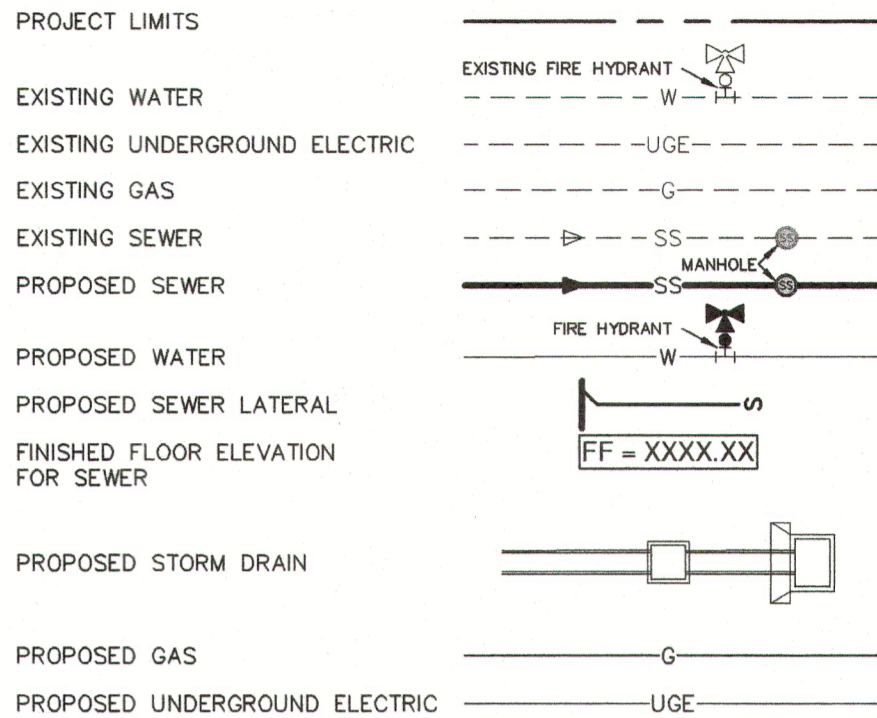


CITY OF NEW BRAUNFELS NOTES

1. NO VALVES, HYDRANTS, ETC. SHALL BE CONSTRUCTED WITHIN CURBS, SIDEWALKS, OR DRIVEWAYS.
2. ALL UTILITIES TO BE CONSTRUCTED PRIOR TO STREETS.
3. THIS PROJECT INCLUDES UTILITY INSTALLATIONS GREATER THAN 5-FEET IN DEPTH. DEEP TRENCHES POSE COMPACTION TESTING AND CONSTRUCTION CHALLENGES AND CITY METHODS FOR TESTING AND COMPACTION MAY NOT BE ACHIEVABLE. A UTILITY COMPACTION PLAN WILL BE REQUIRED AND MUST BE SUBMITTED FOR APPROVAL TO CITY PRIOR TO UTILITY INSTALLATION.
4. UTILITY TRENCH COMPACTION - ALL UTILITY TRENCH COMPACTION TESTS WITHIN THE STREET PAVEMENT/SIDEWALK SECTION SHALL BE THE RESPONSIBILITY OF THE DEVELOPER'S GEOTECHNICAL ENGINEER. FILL MATERIAL SHALL BE PLACED IN UNIFORM LAYERS NOT TO EXCEED TWELVE INCHES (12") LOOSE. DETERMINE THE MAXIMUM LIFT THICKNESS BASED ON THE ABILITY OF THE COMPACTION OPERATION AND EQUIPMENT USED TO MEET THE REQUIRED DENSITY. EACH LAYER OF MATERIAL SHALL BE COMPACTED TO A MINIMUM 95% DENSITY AND TESTED FOR DENSITY AND MOISTURE IN ACCORDANCE WITH TEST METHODS TEX-113-E, TEX-114-E, TEX-115-E. THE NUMBER AND LOCATION OF REQUIRED TESTS SHALL BE DETERMINED BY THE GEOTECHNICAL ENGINEER AND APPROVED BY THE CITY OF NEW BRAUNFELS STREET INSPECTOR. AT A MINIMUM, TESTS SHALL BE TAKEN EVERY 200 LF FOR EACH LIFT AND EVERY OTHER SERVICE LINE. UPON COMPLETION OF TESTING THE GEOTECHNICAL ENGINEER SHALL PROVIDE THE CITY OF NEW BRAUNFELS STREET INSPECTOR WITH ALL TESTING DOCUMENTATION AND A CERTIFICATION STATING THAT THE PLACEMENT OF FILL MATERIAL HAS BEEN COMPLETED IN ACCORDANCE WITH THE PLANS. ADDITIONAL DENSITY TESTS MAY BE REQUESTED BY THE CITY OF NEW BRAUNFELS INSPECTOR.



SEWER LEGEND



NOTES

1. SEWER PIPE WHERE WATER LINE CROSSES SHALL BE 160 P.S.I. AND MEET THE REQUIREMENTS OF ASTM D2241 WITH ONE 20' JOINT CENTERED AT THE WATER MAIN.
2. NO VERTICAL STACKS ALLOWED FOR ANY LOTS UNLESS OTHERWISE SPECIFIED BY THE ENGINEER.
3. WHEN HORIZONTAL DISTANCE BETWEEN SEWER PIPES AND WATER MAIN IS LESS THAN 9 FEET OF SEPARATION, SEWER MAIN SHALL BE INSTALLED WITH 150 PSI (MIN) PRESSURE PIPE AND FITTINGS IN ACCORDANCE WITH NBUS WATER CONNECTION POLICY IN THE VICINITY OF WATER MAINS. (SEE SEWER NOTES SHEET C5.20)
4. CONTRACTOR SHALL ENSURE THAT MANHOLES OUTSIDE OF PAVED AREAS ARE SET WITH TOP ELEVATIONS 2" ABOVE FINISHED GRADE WITH CONCRETE RING ENCASMENT. CONTRACTOR SHALL ENSURE THAT MANHOLES IN PAVED AREAS ARE SET TO MATCH TOP OF FINISHED GRADE.
5. ALL SEWER PIPES SHALL BE 8" PVC (SDR 26), UNLESS OTHERWISE NOTED.
6. CONTRACTOR IS TO VERIFY EXISTING INVERT OF SANITARY SEWER MAIN AND ALERT ENGINEER IMMEDIATELY OF ANY DIFFERENCE FROM INVERT SHOWN ON PLANS.
7. CONTRACTOR SHALL PROTECT ALL EXISTING FENCES. ANY FENCE DAMAGED BY THE CONTRACTOR SHALL BE REPAIRED BY THE CONTRACTOR AT THEIR EXPENSE.
8. THE CONTRACTOR WILL BE RESPONSIBLE FOR DETERMINING EXACT LOCATION OF ALL UTILITIES AND DRAINAGE STRUCTURES WHETHER SHOWN ON THE PLANS OR NOT. THE CONTRACTOR SHALL UNCOVER EXISTING UTILITIES PRIOR TO CONSTRUCTION TO VERIFY SIZE, GRADE, AND LOCATION. THE CONTRACTOR SHALL NOTIFY THE ENGINEER IMMEDIATELY OF ANY VARIATIONS FROM PLANS PRIOR TO BEGINNING CONSTRUCTION. ANY DAMAGE TO EXISTING UTILITIES, WHETHER SHOWN ON THE PLANS OR NOT, SHALL BE THE CONTRACTOR'S RESPONSIBILITY TO REPAIR, AT HIS EXPENSE.
9. SEE THIS SHEET FOR TYPICAL SANITARY SEWER/WATER CROSSING DETAIL.
10. IF A CONFLICT EXISTS BETWEEN THE VARIOUS SUBMITTED DOCUMENTS (ENGINEERING CALCULATIONS, PROJECTED SPECIFICATIONS, PROJECTED PLANS, ADDENDUMS, ETC.), THE FOLLOWING DOCUMENTS TAKE PRECEDENCE: SPECIFICATIONS GOVERN OVER PLANS, SPECIAL CONDITIONS GOVERN OVER SPECIFICATIONS AND PLANS. ADDENDUMS TAKE PRECEDENCE OVER ALL.
11. LAST 20 L.F. OF 8" STUB-OUT SHALL BE CONSTRUCTED OF P.V.C. SDR 26 (160 P.S.I.) PRESSURE PIPE.
12. ALL SEWER PIPE LATERALS SHALL BE SDR 26 (CLASS 160) PVC PIPE AND SHALL HAVE A MINIMUM SLOPE OF 2%.
13. WASTEWATER LATERALS SHALL BE LAID WITH A MINIMUM OF 36 INCHES OF COVER.
14. NEW MANHOLES MUST BE CONSTRUCTED OF OR LINED WITH A CORROSION RESISTANT MATERIAL. WHERE NEW CONSTRUCTION CONNECTS TO AN EXISTING MANHOLE THAT IS NOT CONSTRUCTED OF A CORROSION RESISTANT MATERIAL, THE EXISTING MANHOLE MUST BE LINED WITH OR REPLACED WITH A CORROSION RESISTANT MATERIAL.
15. 48" MANHOLES ARE REQUIRED FOR ALL MAINS UP TO 18" IN DIAMETER.

FLOODPLAIN NOTE

1. NO PORTION OF ANY LOT ON THIS PROJECT IS WITHIN AN INDICATED SPECIAL FLOOD HAZARD ZONE ACCORDING TO THE FEMA FIRM MAP NO. 48091C0445F EFFECTIVE DATE 9/2/2009 AND FEMA FIRM MAP NO. 48187C0095F EFFECTIVE DATE 11/2/2007.

NOTE:
FOR PAVEMENT DESIGN SECTION SEE GEOTECHNICAL ENGINEERING REPORT.

CAUTION!

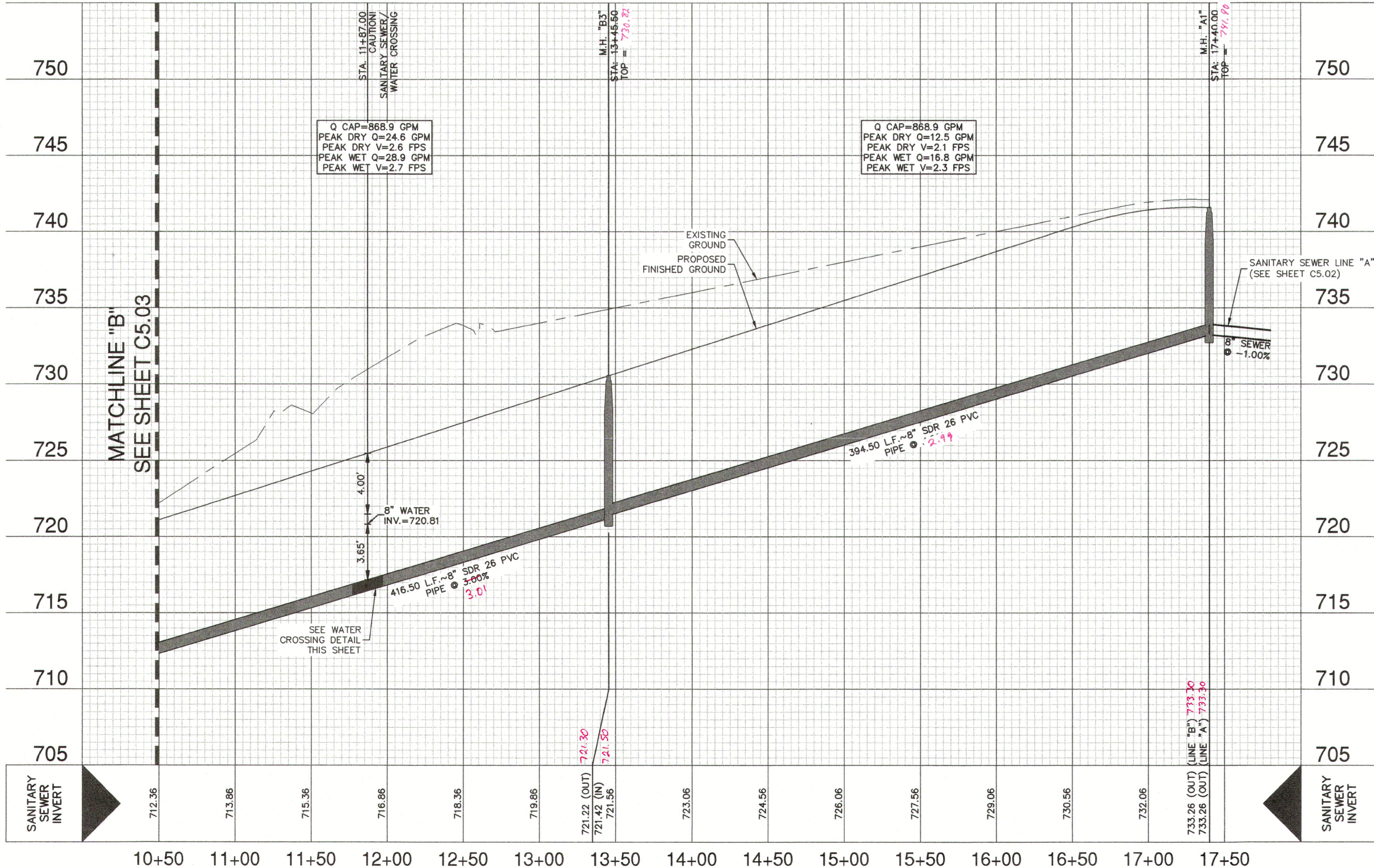
CONTRACTOR SHALL BE REQUIRED TO LOCATE ALL PUBLIC OR PRIVATE UTILITIES INCLUDING BUT NOT LIMITING TO: WATER, SEWER, TELEPHONE AND FIBER OPTIC LINES, SITE LIGHTING ELECTRIC, SECONDARY ELECTRIC, PRIMARY ELECTRICAL DUCTBANKS, LANDSCAPE IRRIGATION FACILITIES, AND GAS LINES. ANY UTILITY CONFLICTS THAT ARISE SHOULD BE COMMUNICATED TO THE ENGINEER IMMEDIATELY AND PRIOR TO CONSTRUCTION. THE CONTRACTOR SHALL CONTACT "TEXAS 811" A MINIMUM OF 48 HOURS PRIOR TO THE START OF CONSTRUCTION. ANY DAMAGE TO EXISTING UTILITIES SHALL BE THE SOLE RESPONSIBILITY OF THE CONTRACTOR AND THE REPAIR SHALL BE AT CONTRACTOR'S SOLE EXPENSE WHETHER THE UTILITY IS SHOWN ON THESE PLANS OR NOT.

TRENCH EXCAVATION SAFETY PROTECTION:

CONTRACTOR AND/OR CONTRACTOR'S INDEPENDENTLY RETAINED EMPLOYEE OR STRUCTURAL DESIGN/ GEOTECHNICAL/ SAFETY/EQUIPMENT CONSULTANT, IF ANY, SHALL REVIEW THESE PLANS AND ANY AVAILABLE GEOTECHNICAL INFORMATION AND ANTICIPATED INSTALLATION SITES WITHIN THE PROJECT WORK AREA IN ORDER TO IMPLEMENT CONTRACTOR'S TRENCH EXCAVATION SAFETY PROTECTION SYSTEMS, PROGRAMS AND /OR PROCEDURES FOR THE PROJECT DESCRIBED IN THE CONTRACT DOCUMENTS. THE CONTRACTOR'S IMPLEMENTATION OF THESE SYSTEMS, PROGRAMS AND/OR PROCEDURES SHALL PROVIDE FOR ADEQUATE TRENCH EXCAVATION SAFETY PROTECTION THAT COMPLY WITH AS A MINIMUM, OSHA STANDARDS FOR TRENCH EXCAVATIONS. SPECIFICALLY, CONTRACTOR AND/OR CONTRACTOR'S INDEPENDENTLY RETAINED EMPLOYEE OR SAFETY CONSULTANT SHALL IMPLEMENT A TRENCH SAFETY PROGRAM IN ACCORDANCE WITH OSHA STANDARDS GOVERNING THE PRESENCE AND ACTIVITIES OF INDIVIDUALS WORKING IN AND AROUND TRENCH EXCAVATION.

SANITARY SEWER LINE "B"
STA. 10+50.00 TO 17+40.00

VERTICAL SCALE: 1" = 5'
HORIZONTAL SCALE: 1" = 50'



PAPE-DAWSON
ENGINEERS

STEELWOOD TRAIL UNIT 4
NEW BRAUNFELS, TEXAS

SANITARY SEWER LINE B - PLAN & PROFILE
STA. 10+50.00 TO 17+40.00

PLAT NO. 30034-07
JOB NO. MAY 2022
DESIGNER HF
CHECKED KJ DRAWN BH
SHEET C5.04

FOR PERMIT