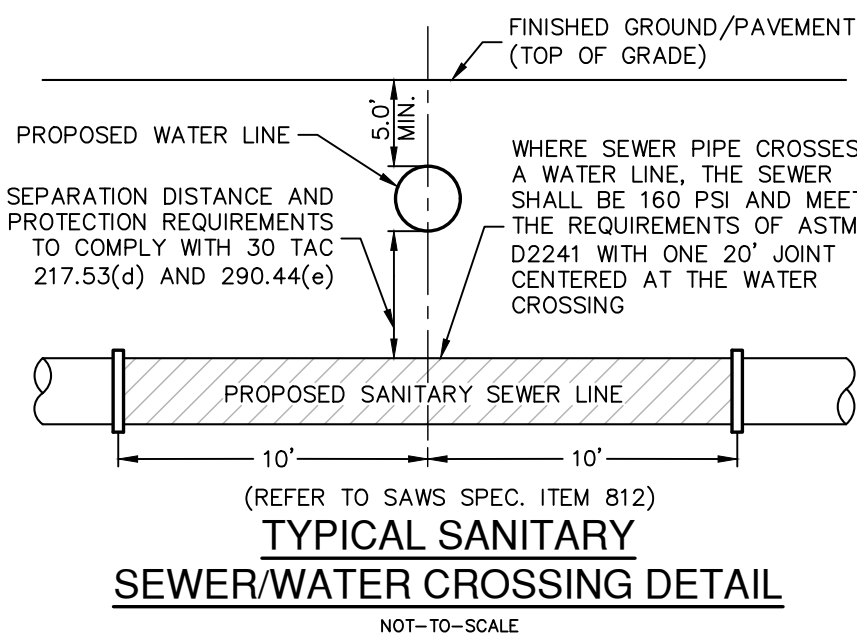


VERTICAL SCALE: 1" = 5'
HORIZONTAL SCALE: 1" = 50'



CAUTION!!

CONTRACTOR SHALL BE REQUIRED TO LOCATE ALL PUBLIC OR PRIVATE UTILITIES INCLUDING BUT NOT LIMITING TO: WATER, SEWER, TELEPHONE AND FIBER OPTIC LINES, SITE LIGHTING ELECTRICAL, SECONDARY ELECTRIC, PRIMARY ELECTRICAL, DUCTBANKS, LANDSCAPE IRRIGATION FACILITIES, AND GAS LINES. ANY UTILITY CONDITIONS THAT PRIOR TO BE COMMUNICATED TO THE ENGINEER IMMEDIATELY AND PRIOR TO CONSTRUCTION. THE CONTRACTOR SHALL CONTACT THE CITY OF DALLAS AT THE MINIMUM OF FOUR (4) WEEKS PRIOR TO START OF CONSTRUCTION. ANY DAMAGE TO EXISTING UTILITIES SHALL BE THE SOLE RESPONSIBILITY OF THE CONTRACTOR AND THE REPAIR SHALL BE AT CONTRACTOR'S SOLE EXPENSE WHATEVER THE UTILITY IS SHOWN ON THESE PLANS OR NOT.

TRENCH EXCAVATION SAFETY PROTECTION:

CONTRACTOR AND/OR CONTRACTOR'S INDEPENDENTLY RETAINED EMPLOYEE OR STRUCTURAL DESIGN/ GEOTECHNICAL/ SAFETY/EQUIPMENT CONSULTANT, IF ANY, SHALL REVIEW THESE PLANS AND ANY AVAILABLE GEOTECHNICAL INFORMATION AND ADVISE THE CONTRACTOR OF ANY DEFICIENCIES PRIOR TO THE PROJECT WORK BEING IN ORDER TO IMPLEMENT CONTRACTOR'S TRENCH EXCAVATION SAFETY PROTECTION SYSTEMS, PROGRAMS AND/OR PROCEDURES FOR THE PROJECT DESCRIBED IN THE CONTRACT DOCUMENTS. THE CONTRACTOR'S IMPLEMENTATION OF THESE SYSTEMS, PROGRAMS AND PROCEDURES SHALL BE IN ACCORDANCE WITH THE TRENCH SAFETY PROGRAM'S SAFETY PROTECTION THAT COMPLY WITH AS A MINIMUM, OSHA STANDARDS FOR TRENCH EXCAVATIONS. SPECIFICALLY, CONTRACTOR AND/OR CONTRACTOR'S INDEPENDENTLY RETAINED EMPLOYEE OR SAFETY CONSULTANT SHALL IMPLEMENT THE TRENCH SAFETY PROGRAM IN ACCORDANCE WITH OSHA STANDARDS CONCERNING PREVENTING THE ACTIVITIES OF INDIVIDUALS WORKING IN AND AROUND TRENCH EXCAVATION.

SEWER (LOWER-EAST SEWERSHED-DOS RIOS/LEON CREEK)

DEVELOPER'S NAME: LENNAR HOMES OF TEXAS
ADDRESS: 100 NE LOOP 410, STE 1155
CITY: SAN ANTONIO STATE: TEXAS ZIP: 78216
PHONE# (210) 403-6200 FAX# N/A
SAWS BLOCK MAP# 204524 TOTAL E.D.'S 291 TOTAL ACREAGE 45.15
487.00
1.6470 AC. 2.56 FC
TOTAL LINEAR FOOTAGE OF PIPE: 1,647.00' PLAT NO.22-1180073
NUMBER OF LOTS 291 SAWS JOB NO. 23-1574

[illegible]

**PAPE-DAWSON
ENGINEERS**

SAN ANTONIO | AUSTIN | HOUSTON | FORT WORTH | DALLAS
2000 NW LOOP 410 | SAN ANTONIO, TX 78213 | 210.375.9000
TEXAS ENGINEERING FIRM #470 | TEXAS SURVEYING FIRM #10028800

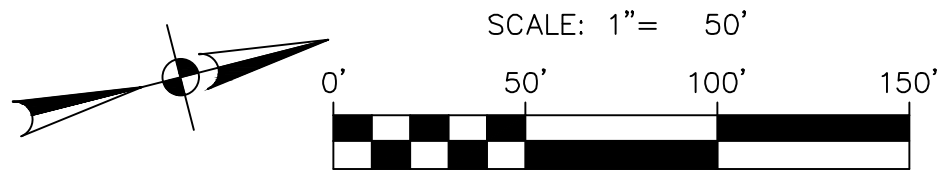
STONE GARDEN - UNIT 2A
BEXAR COUNTY, TEXAS

SS LINE N PLAN & PROFILE (STA 9+00.00 TO END)

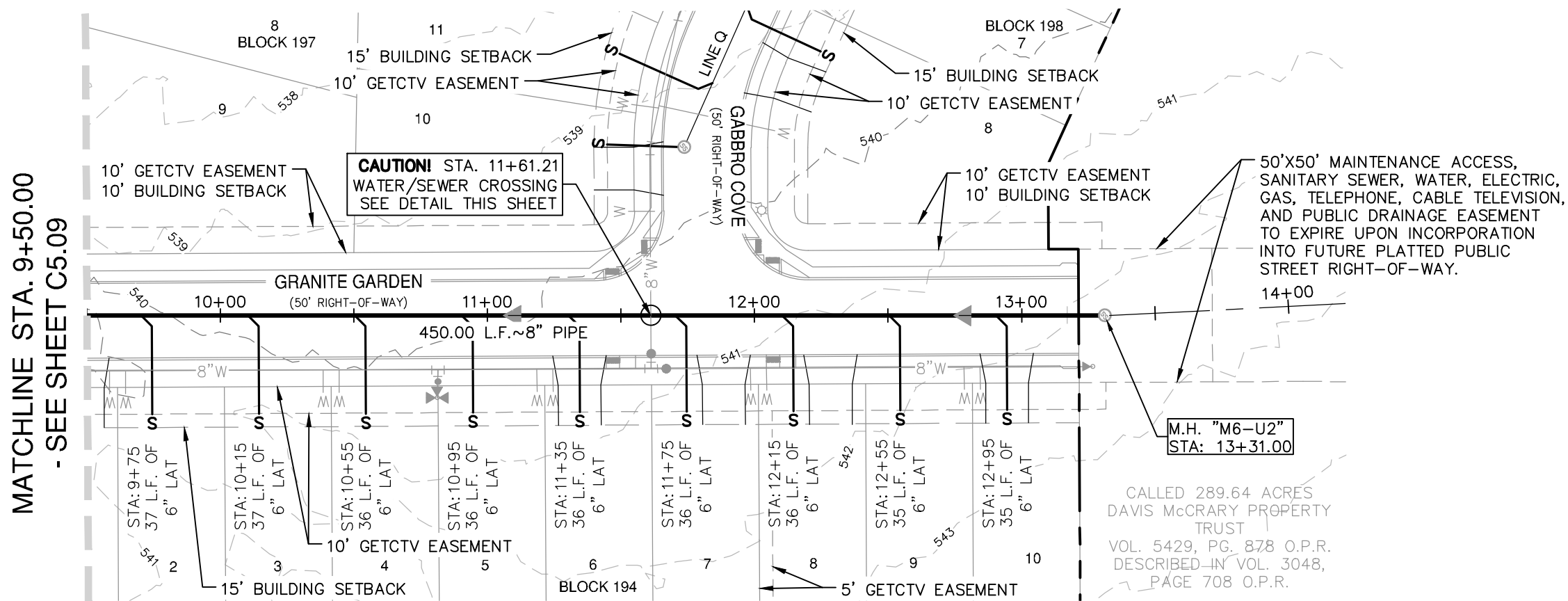
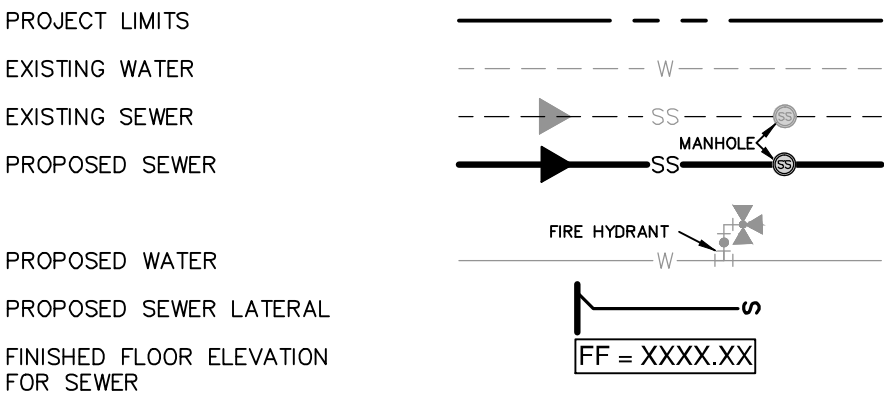
PLAT NO. 22-11800734
JOB NO. 12482-04
DATE AUGUST 2023
DESIGNER JG
CHECKED DW DRAWN TC
SHEET **C5.11**

Date: Nov 16, 2023, 6:10pm User ID: b446
File: P:\12482\04\12482-2A\Draw\SS1248204-U2A_Line_M.dwg

THIS DOCUMENT HAS BEEN PRODUCED FROM MATERIAL THAT WAS STORED AND/OR TRANSMITTED ELECTRONICALLY AND MAY HAVE BEEN INADVERTENTLY ALTERED. RELY ONLY ON FINAL HARDCOPY MATERIALS BEARING THE CONSULTANT'S ORIGINAL SIGNATURE AND SEAL. AERIAL IMAGERY PROVIDED BY GOOGLE UNLESS OTHERWISE NOTED. Imagery © 2016, CARCO/Digital Globe, Texas Orthorectification Program, USDA Farm Service Agency.

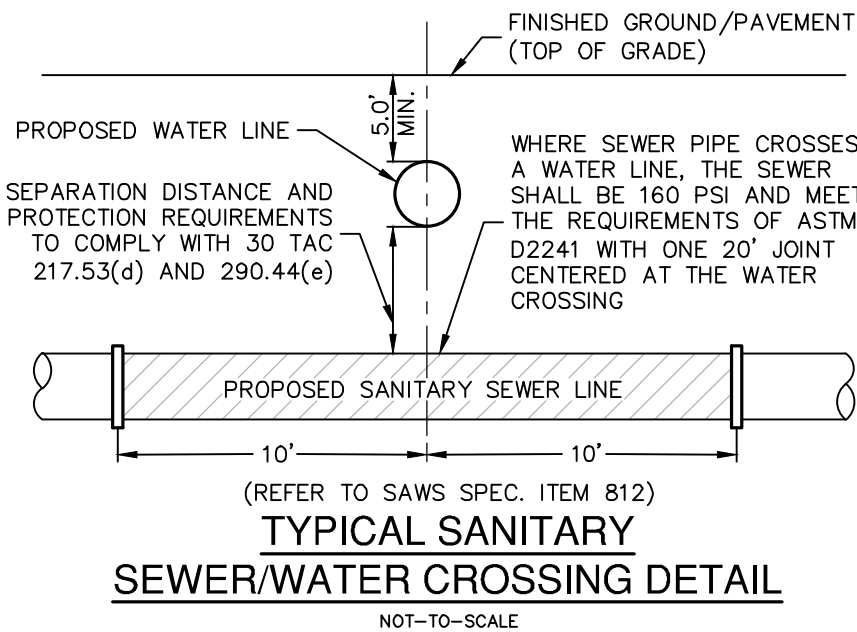
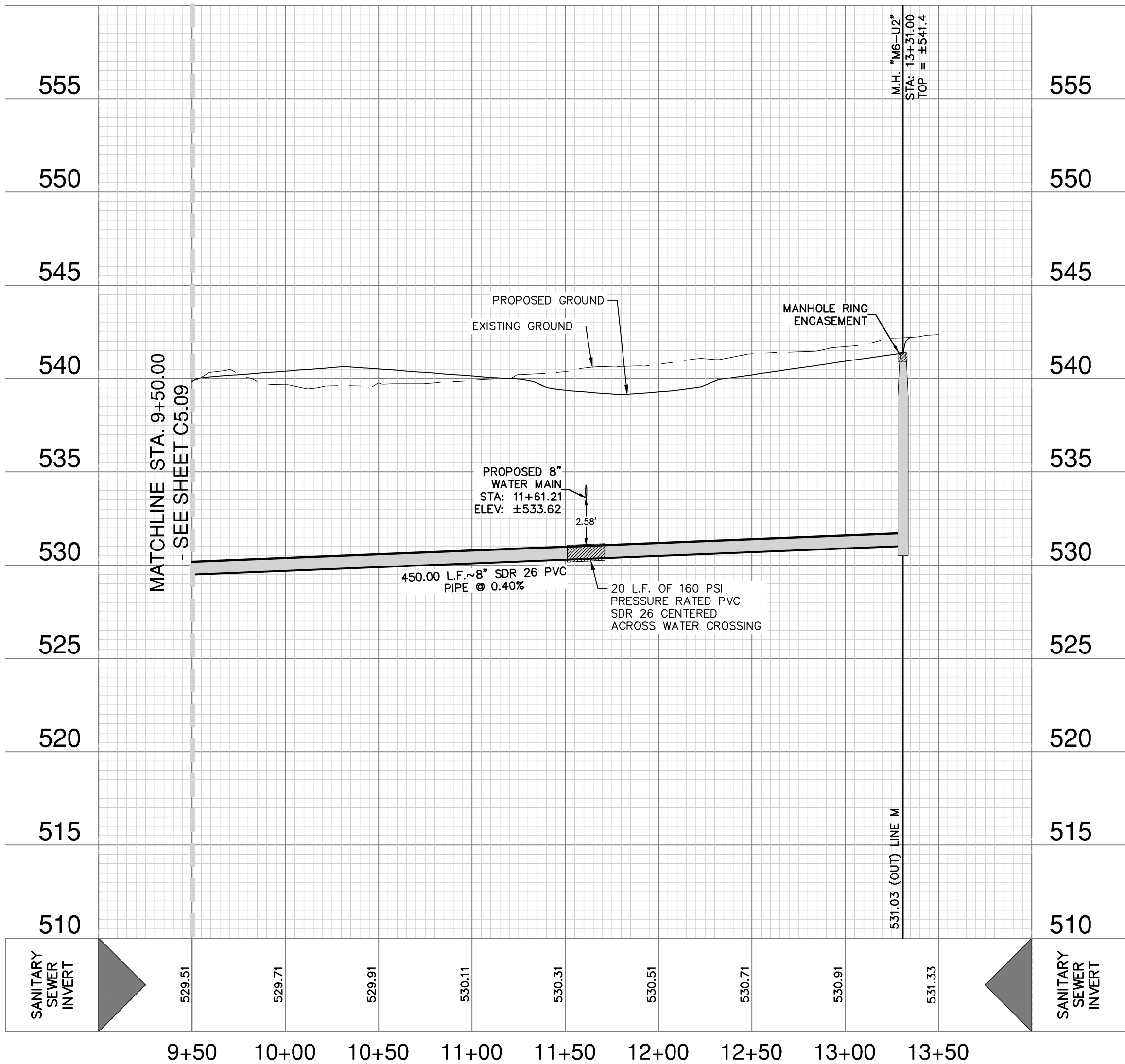


SEWER LEGEND



SANITARY SEWER LINE "M"
STA. 9+50.00 TO END

VERTICAL SCALE: 1" = 5'
HORIZONTAL SCALE: 1" = 50'



CAUTION!!

CONTRACTOR SHALL BE REQUIRED TO LOCATE ALL PUBLIC OR PRIVATE UTILITIES INCLUDING BUT NOT LIMITING TO: WATER, SEWER, TELEPHONE AND FIBER OPTIC LINES, SITE LIGHTING, ELECTRIC, SECONDARY ELECTRIC, PRIMARY ELECTRICAL DUCTBANKS, LANDSCAPE IRRIGATION FACILITIES, AND GAS LINES. ANY UTILITY CONFLICTS THAT ARISE SHOULD BE COMMUNICATED TO THE ENGINEER IMMEDIATELY AND PRIOR TO CONSTRUCTION. THE CONTRACTOR SHALL CONTACT 1-800-DIG-TESS A MINIMUM OF 48 HOURS PRIOR TO THE START OF CONSTRUCTION. ANY DAMAGE TO EXISTING UTILITIES SHALL BE THE SOLE RESPONSIBILITY OF THE CONTRACTOR AND THE REPAIR SHALL BE AT CONTRACTOR'S SOLE EXPENSE WHETHER THE UTILITY IS SHOWN ON THESE PLANS OR NOT.

TRENCH EXCAVATION SAFETY PROTECTION:

CONTRACTOR AND/OR CONTRACTOR'S INDEPENDENTLY RETAINED EMPLOYEE OR STRUCTURAL DESIGN/ GEOTECHNICAL/ SAFETY/EQUIPMENT CONSULTANT, IF ANY, SHALL REVIEW THESE PLANS AND ANY AVAILABLE GEOTECHNICAL INFORMATION AND THE ANTICIPATED INSTALLATION SITES WITHIN THE PROJECT WORK AREA IN ORDER TO IMPLEMENT CONTRACTOR'S TRENCH EXCAVATION SAFETY PROTECTION SYSTEMS, PROGRAMS AND/OR PROCEDURES FOR THE PROJECT DESCRIBED IN THE CONTRACT DOCUMENTS. THE CONTRACTOR'S IMPLEMENTATION OF THESE SYSTEMS, PROGRAMS AND/OR PROCEDURES SHALL PROVIDE FOR ADEQUATE TRENCH EXCAVATION SAFETY PROTECTION THAT COMPLY WITH AS A MINIMUM, OSHA STANDARDS FOR TRENCH EXCAVATIONS. SPECIFICALLY, CONTRACTOR AND/OR CONTRACTOR'S INDEPENDENTLY RETAINED EMPLOYEE OR SAFETY CONSULTANT SHALL IMPLEMENT A TRENCH SAFETY PROGRAM IN ACCORDANCE WITH OSHA STANDARDS GOVERNING THE PRESENCE AND ACTIVITIES OF INDIVIDUALS WORKING IN AND AROUND TRENCH EXCAVATION.

SEWER (LOWER-EAST SEWERSHED-DOS RIOS/LEON CREEK)

DEVELOPER'S NAME: LENNAR HOMES OF TEXAS			
ADDRESS: 100 NE LOOP 410, STE 1155			
CITY: SAN ANTONIO		STATE: TEXAS	ZIP: 78216
PHONE# (210) 403-6200		FAX# N/A	
SAWS BLOCK MAP# 204524 TOTAL EDU'S 291 TOTAL ACREAGE 45.15			
TOTAL LINEAR FOOTAGE OF PIPE: 1643 LF ~12" PVC PLAT NO. 22-11800734			
NUMBER OF LOTS 291		SAWS JOB NO. 23-1574	

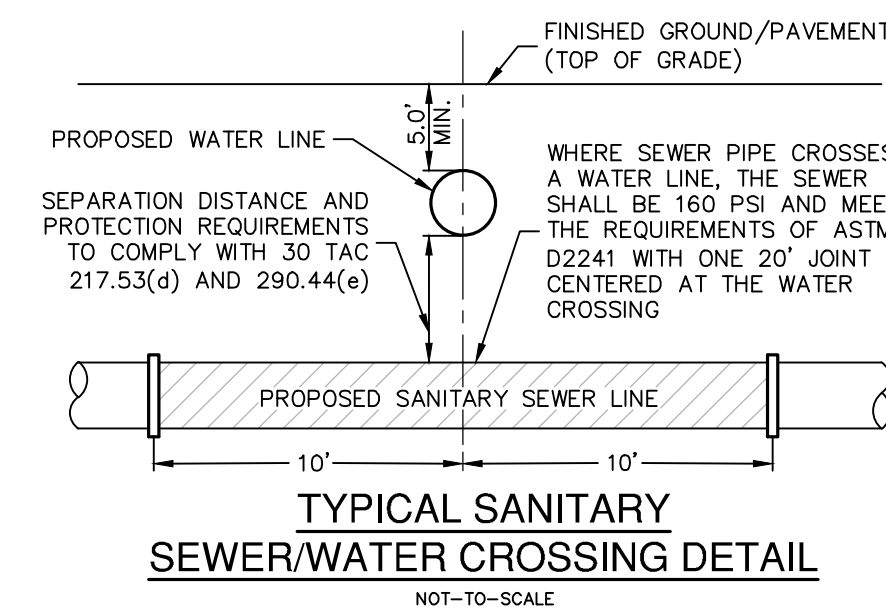
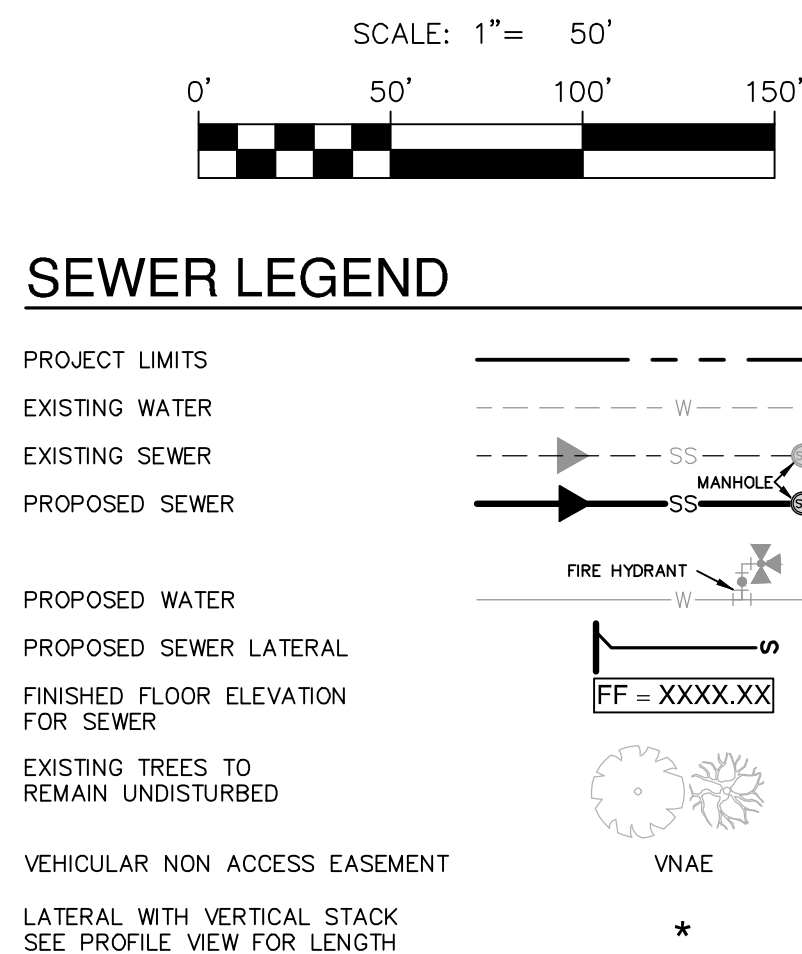
NO.	REVISION	DATE



PAPE-DAWSON ENGINEERS
SAN ANTONIO | AUSTIN | HOUSTON | FORT WORTH | DALLAS
2000 HW LOOP 410 | SAN ANTONIO, TX 78213 | 210.375.9000
TEXAS ENGINEERING FIRM #170 | TEXAS SURVEYING FIRM #10088600

STONE GARDEN - UNIT 2A
BEXAR COUNTY, TEXAS
SS LINE M PLAN & PROFILE (STA 9+50.00 TO END)

PLAT NO.	22-11800734
JOB NO.	12482-04
DATE	AUGUST 2023
DESIGNER	JG
CHECKED	DW DRAWN TC
SHEET	C5.09



CAUTION!!

CONTRACTOR SHALL BE REQUIRED TO LOCATE ALL PUBLIC OR PRIVATE UTILITIES INCLUDING BUT NOT LIMITING TO: WATER, SEWER, TELEPHONE AN FIBER OPTIC LINES, SITE LIGHTING ELECTRIC, SECONDARY ELECTRIC, PRIMARY ELECTRICAL DISTRIBUTION, LANDFILL, INDUSTRIAL FACILITIES, AND GAS LINES. CONTRACTOR SHALL BE RESPONSIBLE FOR OBTAINING ALL NECESSARY PERMITS. ENGINEER IMMEDIATELY AND PRIOR TO CONSTRUCTION, THE CONTRACTOR SHALL CONTACT THE UTILITY DISTRICTS AT LEAST 48 HOURS PRIOR TO THE START OF ANY CONSTRUCTION. ANY DAMAGE TO EXISTING UTILITIES SHALL BE THE SOLE RESPONSIBILITY OF THE CONTRACTOR AND THE REPAIR SHALL BE AT CONTRACTOR'S SOLE EXPENSE WHETHER THE UTILITY IS SHOWN ON THESE PLANS OR NOT.

TRENCH EXCAVATION SAFETY PROTECTION:

CONTRACTOR AND/OR CONTRACTOR'S INDEPENDENTLY RETAINED EMPLOYEE OR STRUCTURAL DESIGNER/GEOTECHNICAL/ SAFETY/EQUIPMENT CONSULTANT SHALL DEVELOP THESE PLANS AND AN ADEQUATE SAFETY PROTECTION INFORMATION AND THE ANTICIPATED INSTALLATION SITES WITHIN THE PROJECT WORK AREA IN ORDER TO IMPLEMENT CONTRACTOR'S TRENCH EXCAVATION SAFETY PROTECTION SYSTEMS, PROGRAMS AND PROCEDURES. THE PROJECT DESCRIBED IN THE CONTRACT DOCUMENTS AND/OR THE CONTRACTOR'S IMPLEMENTATION OF THESE SYSTEMS, PROGRAMS AND/OR PROCEDURES SHALL PROVIDE FOR ADEQUATE TRENCH EXCAVATION SAFETY PROTECTION THAT COMPLY WITH AT A MINIMUM, OSHA STANDARD 29 CFR 1926 SUBPART K, AND ANY APPLICABLE STATE OR LOCAL AGENCIES. CONTRACTOR'S INDEPENDENTLY RETAINED EMPLOYEE OR SAFETY/EQUIPMENT CONSULTANT SHALL IMPLEMENT A TRENCH SAFETY PROGRAM THAT COMPLY WITH OSHA STANDARD 29 CFR 1926 SUBPART K AND ANY ACTIVITIES OF INDIVIDUALS WORKING IN AND AROUND TRENCH EXCAVATION.

SEWER (LOWER EAST SEWERSHED-DOS RIOS/ LOST CREEK)			
DEVELOPER'S NAME: LENNAR HOMES OF TEXAS, INC.			
ADDRESS: 100 NE LOOP 410, SUITE 1155			
CITY: SAN ANTONIO	STATE: TEXAS	ZIP: 78216	
PHONE: (210) 403-6200	FAX#	N/A	
SAWS BLOCK MAP# 202524	TOTAL EDU'S .164 TOTAL ACREAGE .22.70		
NUMBER LINE FOOTAGE OF PIPE: 4,140 LF ~ 8" PIPE PLAT NO. 23-11800210			
NUMBER OF LOTS 164	SAWS JOB NO. 23-1596		

[illegible]

**PAPE-DAWSON
ENGINEERS**

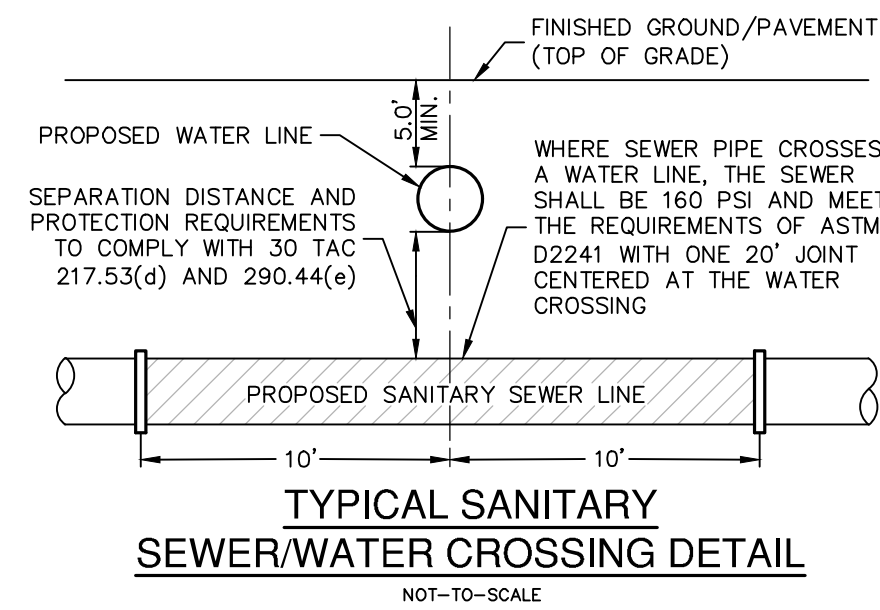
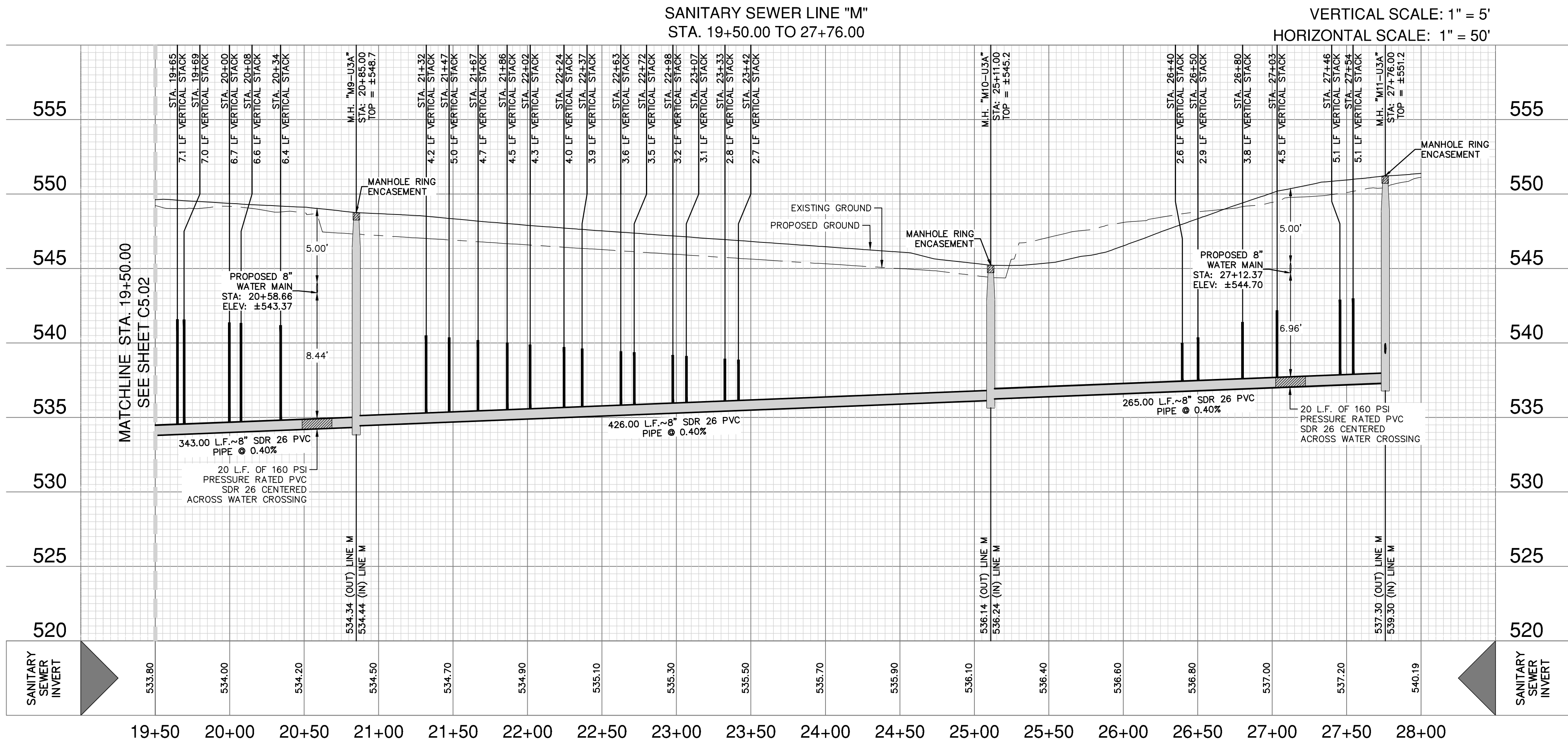
2000 NW LOOP 410 | SAN ANTONIO, TX 78213 | 210.375.9000
TEXAS ENGINEERING FIRM #470 | TEXAS SURVEYING FIRM #10028600

STONE GARDEN - UNIT 3A
BEXAR COUNTY, TEXAS

PLAT NO. 23-11800210
JOB NO. 12482-09
DATE MAY 2024
DESIGNER BK
CHECKED DW DRAWN JR
SHEET C5.02

Dates: April 26, 2023, 10:31 AM - User ID: Pamos
File: P:\24\62\09\Design\Civil\SS\246209 LINE M.dwg

THIS DOCUMENT HAS BEEN PRODUCED FROM MATERIAL THAT WAS STORED AND/OR TRANSMITTED ELECTRONICALLY AND MAY HAVE BEEN INADVERTENTLY ALTERED. RELY ONLY ON FINAL HARD COPY MATERIALS BEARING THE CONSULTANT'S ORIGINAL SIGNATURE AND SEAL. AERIAL IMAGERY PROVIDED BY GOOGLE UNLESS OTHERWISE NOTED. Imagery © 2016, CAPCOOL Digital Globe, Texas Orthomography Program, USDA Farm Service Agency.



CAUTION!!

CONTRACTOR SHALL BE REQUIRED TO LOCATE ALL PUBLIC OR PRIVATE UTILITIES INCLUDING BUT NOT LIMITING TO: WATER, SEWER, TELEPHONE AND FIBER OPTIC LINES, SITE LIGHTING ELECTRIC, SECONDARY ELECTRIC, PRIMARY ELECTRICAL DUCTBANKS, LANDSCAPE IRRIGATION FACILITIES, AND GAS LINES. ANY UTILITY CONFLICTS THAT ARISE SHOULD BE COMMUNICATED TO THE ENGINEER IMMEDIATELY AND PRIOR TO CONSTRUCTION. THE CONTRACTOR SHALL CONTACT 1-800-DIG-TESS A MINIMUM OF 48 HOURS PRIOR TO THE START OF CONSTRUCTION. ANY DAMAGE TO EXISTING UTILITIES SHALL BE THE SOLE RESPONSIBILITY OF THE CONTRACTOR AND THE REPAIR SHALL BE AT CONTRACTOR'S SOLE EXPENSE WHETHER THE UTILITY IS SHOWN ON THESE PLANS OR NOT.

TRENCH EXCAVATION SAFETY PROTECTION:

CONTRACTOR AND/ OR CONTRACTOR'S INDEPENDENTLY RETAINED EMPLOYEE OR STRUCTURAL DESIGN/ GEOTECHNICAL/ SAFETY/EQUIPMENT CONSULTANT, IF ANY, SHALL REVIEW THESE PLANS AND ANY AVAILABLE GEOTECHNICAL INFORMATION AND THE ANTICIPATED INSTALLATION SITES WITHIN THE PROJECT WORK AREA IN ORDER TO IMPLEMENT CONTRACTOR'S TRENCH EXCAVATION SAFETY PROTECTION SYSTEMS, PROGRAMS AND/OR PROCEDURES FOR THE PROJECT DESCRIBED IN THE CONTRACT DOCUMENTS. THE CONTRACTOR'S IMPLEMENTATION OF THESE SYSTEMS, PROGRAMS AND/OR PROCEDURES SHALL PROVIDE FOR ADEQUATE TRENCH EXCAVATION SAFETY PROTECTION THAT COMPLY WITH AS A MINIMUM, OSHA STANDARDS FOR TRENCH EXCAVATIONS. SPECIFICALLY, CONTRACTOR AND/OR CONTRACTOR'S INDEPENDENTLY RETAINED EMPLOYEE OR SAFETY CONSULTANT SHALL IMPLEMENT A TRENCH SAFETY PROGRAM IN ACCORDANCE WITH OSHA STANDARDS GOVERNING THE PRESENCE AND ACTIVITIES OF INDIVIDUALS WORKING IN AND AROUND TRENCH EXCAVATION.

SEWER (LOWER EAST SEWERSHED-DOS RIOS/ LEON CREEK)

DEVELOPER'S NAME: LENNAR HOMES OF TEXAS, INC.			
ADDRESS: 100 NE LOOP 410, SUITE 1155			
CITY: SAN ANTONIO	STATE: TEXAS	ZIP: 78216	
PHONE# (210) 403-6200	FAX# N/A		
SAWS BLOCK MAP# 202524 TOTAL EDU'S 164 TOTAL ACREAGE 22.70			
TOTAL LINEAR FOOTAGE OF PIPE: 4,140 LF ~ 8" PIPE PLAT NO. 23-11800210			
NUMBER OF LOTS 164 SAWS JOB NO. 23-1596			

PLAT NO.	23-11800210
JOB NO.	12482-09
DATE	MAY 2024
DESIGNER	BK
CHECKED	DW
DRAWN	JR
SHEET	C5.03

STONE GARDEN - UNIT 3A
BEXAR COUNTY, TEXAS

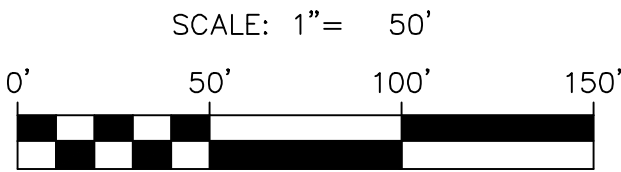
SANITARY SEWER LINE M PLAN & PROFILE
(STA. 19+50.00 TO 27+76.00)

**PAPE-DAWSON
ENGINEERS**

2000 HW LOOP 410 | SAN ANTONIO, TX 78213 | 210.375.9000
TEXAS ENGINEERING FIRM #470 | TEXAS SURVEYING FIRM #1008800



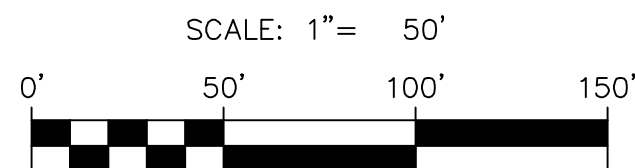
NO.	REVISION	DATE



SEWER LEGEND

- PROJECT LIMITS
EXISTING WATER
EXISTING SEWER
PROPOSED SEWER
PROPOSED WATER
PROPOSED SEWER LATERAL
FINISHED FLOOR ELEVATION FOR SEWER
EXISTING TREES TO REMAIN UNDISTURBED
VEHICULAR NON ACCESS EASEMENT
LATERAL WITH VERTICAL STACK
SEE PROFILE VIEW FOR LENGTH





SEWER LEGEND

PROJECT LIMITS

EXISTING WATER

EXISTING SEWER

PROPOSED SEWER

PROPOSED WATER

PROPOSED SEWER LATERAL

FINISHED FLOOR ELEVATION FOR SEWER

LATERAL WITH VERTICAL STACK SEE PROFILE VIEW FOR LENGTH

FIRE HYDRANT

MANHOLE

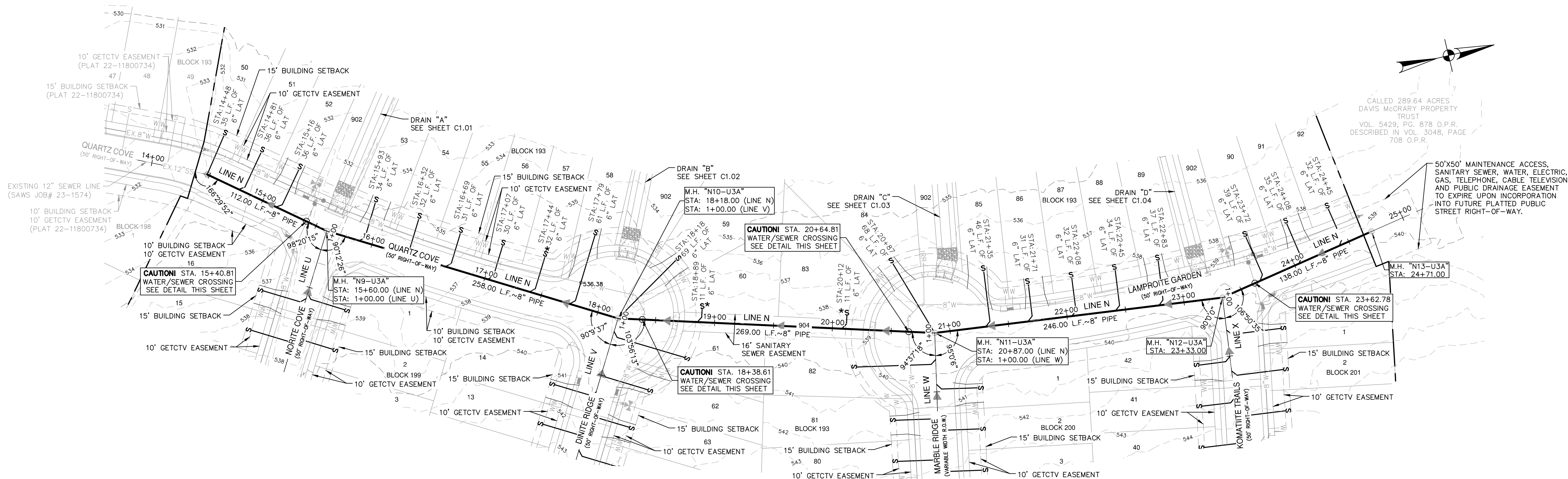
FF = XXXX.XX

*



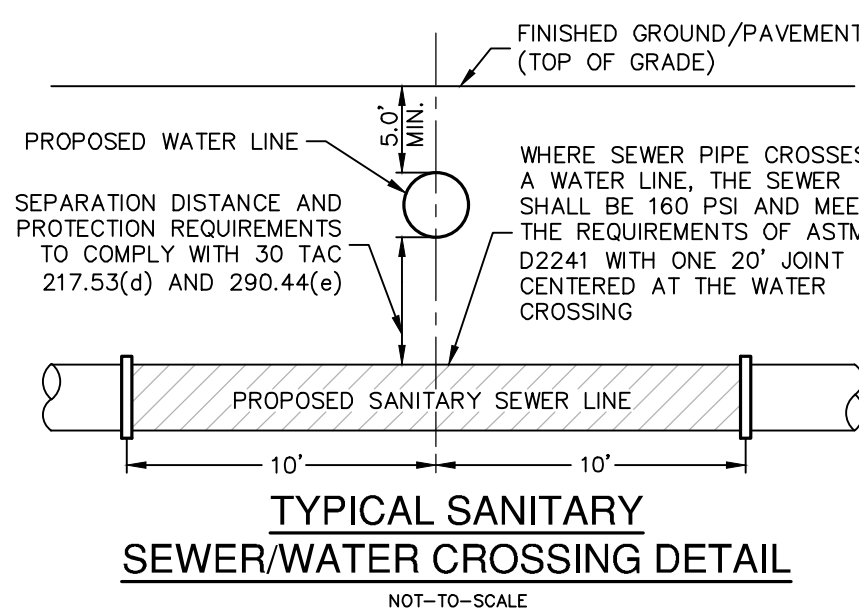
**PAPE-DAWSON
ENGINEERS**

2000 NW LOOP 410 | SAN ANTONIO, TX 78213 | 210.375.9000
TEXAS ENGINEERING FIRM #470 | TEXAS SURVEYING FIRM #10028800



SANITARY SEWER LINE "N"
STA. 14+48.00 TO 24+71.00

VERTICAL SCALE: 1" = 5'
HORIZONTAL SCALE: 1" = 50'



OPEN SPACE:

LOTS 902, 904-905, BLOCK 193, & LOT 902, BLOCK 194 ARE DESIGNATED AS OPEN SPACE, LANDSCAPE, DRAINAGE, ACCESS, SEWER, WATER, ELECTRIC, GAS, TELEPHONE AND CABLE TV EASEMENT.

CAUTION!!

CONTRACTOR SHALL BE REQUIRED TO LOCATE ALL PUBLIC OR PRIVATE UTILITIES INCLUDING BUT NOT LIMITING TO: WATER, SEWER, TELEPHONE AND FIBER OPTIC LINES, SITE LIGHTING ELECTRICAL, SECONDARY ELECTRIC, PRIMARY ELECTRICAL DUCTBANKS, LANDSCAPE IRRIGATION FACILITIES, AND GAS LINES ANY UTILITY CONFLICTS THAT ARISE SHOULD BE COMMUNICATED TO THE ENGINEER IMMEDIATELY AND PRIOR TO CONSTRUCTION. THE CONTRACTOR SHALL CONTACT 1-800-DIG-TESS A MINIMUM OF 48 HOURS PRIOR TO THE START OF ANY CONSTRUCTION. THE CONTRACTOR'S EXISTING UTILITIES SHALL BE THE SOLE RESPONSIBILITY OF THE CONTRACTOR AND THE REPAIR SHALL BE AT CONTRACTOR'S SOLE EXPENSE WHETHER THE UTILITY IS SHOWN ON THESE PLANS OR NOT.

TRENCH EXCAVATION SAFETY PROTECTION:

CONTRACTOR AND/OR CONTRACTOR'S INDEPENDENTLY RETAINED EMPLOYEE OR STRUCTURAL DESIGN/ GEOTECHNICAL/ SAFETY/EQUIPMENT CONSULTANT, IF ANY, SHALL REVIEW THESE PLANS AND ANY AVAILABLE GEOTECHNICAL INFORMATION AND THE ANTICIPATED INSTALLATION SITES WITHIN THE PROJECT AREA AND SHALL BE RESPONSIBLE FOR IDENTIFYING AND PREPARING EXCAVATION SAFETY PROTECTION SYSTEMS, PROGRAMS AND/OR PROCEDURES FOR THE PROJECT DESCRIBED IN THE CONTRACT DOCUMENTS AND THE CONTRACTOR'S IMPLEMENTATION OF THESE SYSTEMS, PROGRAMS AND/OR PROCEDURES SHALL PROVIDE FOR ADEQUATE TRENCH EXCAVATION SAFETY PROTECTION SYSTEMS, PROGRAMS AND/OR PROCEDURES FOR TRENCH EXCAVATIONS. SPECIFICALLY, CONTRACTOR AND/OR CONTRACTOR'S INDEPENDENTLY RETAINED EMPLOYEE OR SAFETY CONSULTANT SHALL IMPLEMENT A TRENCH SAFETY PROGRAM IN ACCORDANCE WITH THE FOLLOWING STANDARDS AND/OR REGULATORY ACTIVITIES OF INDIVIDUALS WORKING IN AND AROUND TRENCH EXCAVATION.

SEWER (LOWER EAST SEWERSHED-DOS RIOS/ LEON CREEK)

DEVELOPER'S NAME: LENNAR HOMES OF TEXAS, INC.
ADDRESS: 100 NE LOOP 410, SUITE 1155
CITY: SAN ANTONIO STATE: TEXAS ZIP: 78216
PHONE# (210) 403-6200 FAX# N/A
SAWS BLOCK MAP# 204524 TOTAL DUE: .164 TOTAL ACREAGE 22.70
TOTAL LINEAR FOOTAGE OF PIPE: 4,140 LF ~ 8" PIPE PLAT NO. 23-11800210
NUMBER OF LOTS: 164 SAWS JOB NO. 23-1596

STONE GARDEN - UNIT 3A
BEXAR COUNTY, TEXAS

**SANITARY SEWER LINE N PLAN & PROFILE
(STA. 14+48.00 TO 24+71.00)**

PLAT NO. 23-11800210
JOB NO. 12482-09
DATE MAY 2024
DESIGNER BK
CHECKED DW DRAWN JR
SHEET C5.04