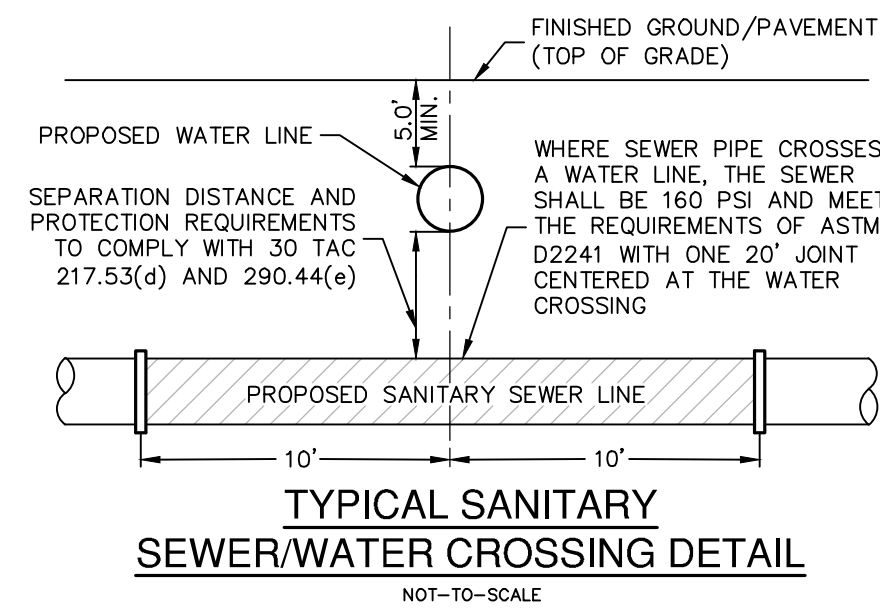
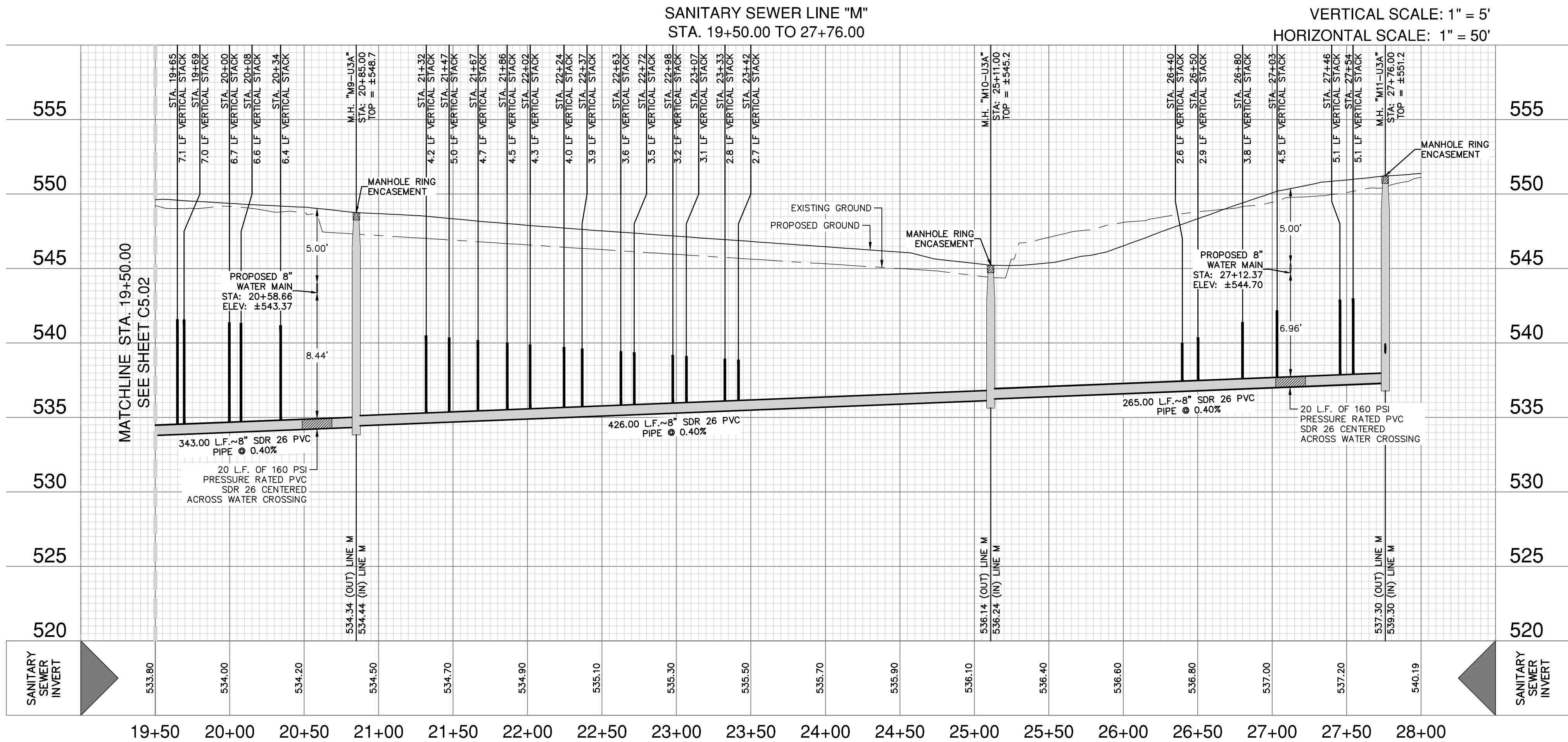


Dates: April 26, 2023, 10:31 AM - User ID: Pamos
File: P:\24\62\09\Design\Civil\SS\246209 LINE M.dwg

THIS DOCUMENT HAS BEEN PRODUCED FROM MATERIAL THAT WAS STORED AND/OR TRANSMITTED ELECTRONICALLY AND MAY HAVE BEEN INADVERTENTLY ALTERED. RELY ONLY ON FINAL HARD COPY MATERIALS BEARING THE CONSULTANT'S ORIGINAL SIGNATURE AND SEAL. AERIAL IMAGERY PROVIDED BY GOOGLE UNLESS OTHERWISE NOTED. Imagery © 2016, CAPOCO, Digital Globe, Texas Orthomography Program, USDA Farm Service Agency.



CAUTION!!

CONTRACTOR SHALL BE REQUIRED TO LOCATE ALL PUBLIC OR PRIVATE UTILITIES INCLUDING BUT NOT LIMITING TO: WATER, SEWER, TELEPHONE AND FIBER OPTIC LINES, SITE LIGHTING ELECTRIC, SECONDARY ELECTRIC, PRIMARY ELECTRICAL DUCTBANKS, LANDSCAPE IRRIGATION FACILITIES, AND GAS LINES. ANY UTILITY CONFLICTS THAT ARISE SHOULD BE COMMUNICATED TO THE ENGINEER IMMEDIATELY AND PRIOR TO CONSTRUCTION. THE CONTRACTOR SHALL CONTACT 1-800-DIG-TESS A MINIMUM OF 48 HOURS PRIOR TO THE START OF CONSTRUCTION. ANY DAMAGE TO EXISTING UTILITIES SHALL BE THE SOLE RESPONSIBILITY OF THE CONTRACTOR AND THE REPAIR SHALL BE AT CONTRACTOR'S SOLE EXPENSE WHETHER THE UTILITY IS SHOWN ON THESE PLANS OR NOT.

TRENCH EXCAVATION SAFETY PROTECTION:

CONTRACTOR AND/ OR CONTRACTOR'S INDEPENDENTLY RETAINED EMPLOYEE OR STRUCTURAL DESIGN/ GEOTECHNICAL/ SAFETY/EQUIPMENT CONSULTANT, IF ANY, SHALL REVIEW THESE PLANS AND ANY AVAILABLE GEOTECHNICAL INFORMATION AND THE ANTICIPATED INSTALLATION SITES WITHIN THE PROJECT WORK AREA IN ORDER TO IMPLEMENT CONTRACTOR'S TRENCH EXCAVATION SAFETY PROTECTION SYSTEMS, PROGRAMS AND/OR PROCEDURES FOR THE PROJECT DESCRIBED IN THE CONTRACT DOCUMENTS. THE CONTRACTOR'S IMPLEMENTATION OF THESE SYSTEMS, PROGRAMS AND/OR PROCEDURES SHALL PROVIDE FOR ADEQUATE TRENCH EXCAVATION SAFETY PROTECTION THAT COMPLY WITH AS A MINIMUM, OSHA STANDARDS FOR TRENCH EXCAVATIONS. SPECIFICALLY, CONTRACTOR AND/OR CONTRACTOR'S INDEPENDENTLY RETAINED EMPLOYEE OR SAFETY CONSULTANT SHALL IMPLEMENT A TRENCH SAFETY PROGRAM IN ACCORDANCE WITH OSHA STANDARDS GOVERNING THE PRESENCE AND ACTIVITIES OF INDIVIDUALS WORKING IN AND AROUND TRENCH EXCAVATION.

SEWER (LOWER EAST SEWERSHED-DOS RIOS/ LEON CREEK)

DEVELOPER'S NAME: LENNAR HOMES OF TEXAS, INC.			
ADDRESS: 100 NE LOOP 410, SUITE 1155			
CITY: SAN ANTONIO	STATE: TEXAS	ZIP: 78216	
PHONE# (210) 403-6200	FAX# N/A		
SAWS BLOCK MAP# 202524 TOTAL EDU'S 164 TOTAL ACREAGE 22.70			
TOTAL LINEAR FOOTAGE OF PIPE: 4,140 LF ~ 8" PIPE PLAT NO. 23-11800210			
NUMBER OF LOTS 164 SAWS JOB NO. 23-1596			

PLAT NO.	23-11800210
JOB NO.	12482-09
DATE	MAY 2024
DESIGNER	BK
CHECKED	DW DRAWN JR
SHEET	C5.03

STONE GARDEN - UNIT 3A
BEXAR COUNTY, TEXAS

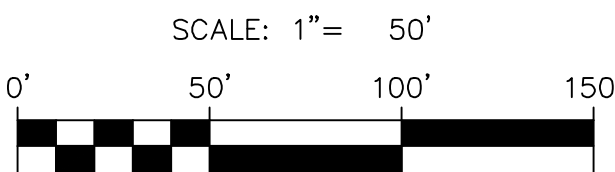
SANITARY SEWER LINE M PLAN & PROFILE
(STA. 19+50.00 TO 27+76.00)

**PAPE-DAWSON
ENGINEERS**

2000 HW LOOP 410 | SAN ANTONIO, TX 78213 | 210.375.9000
TEXAS ENGINEERING FIRM #470 | TEXAS SURVEYING FIRM #1008800



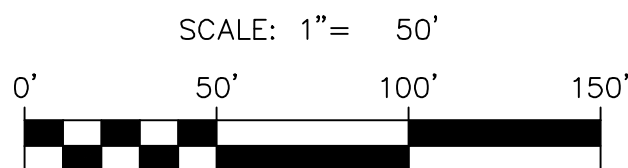
NO.	REVISION	DATE



SEWER LEGEND

- PROJECT LIMITS
EXISTING WATER
EXISTING SEWER
PROPOSED SEWER
PROPOSED WATER
PROPOSED SEWER LATERAL
FINISHED FLOOR ELEVATION FOR SEWER
EXISTING TREES TO REMAIN UNDISTURBED
VEHICULAR NON ACCESS EASEMENT
LATERAL WITH VERTICAL STACK SEE PROFILE VIEW FOR LENGTH

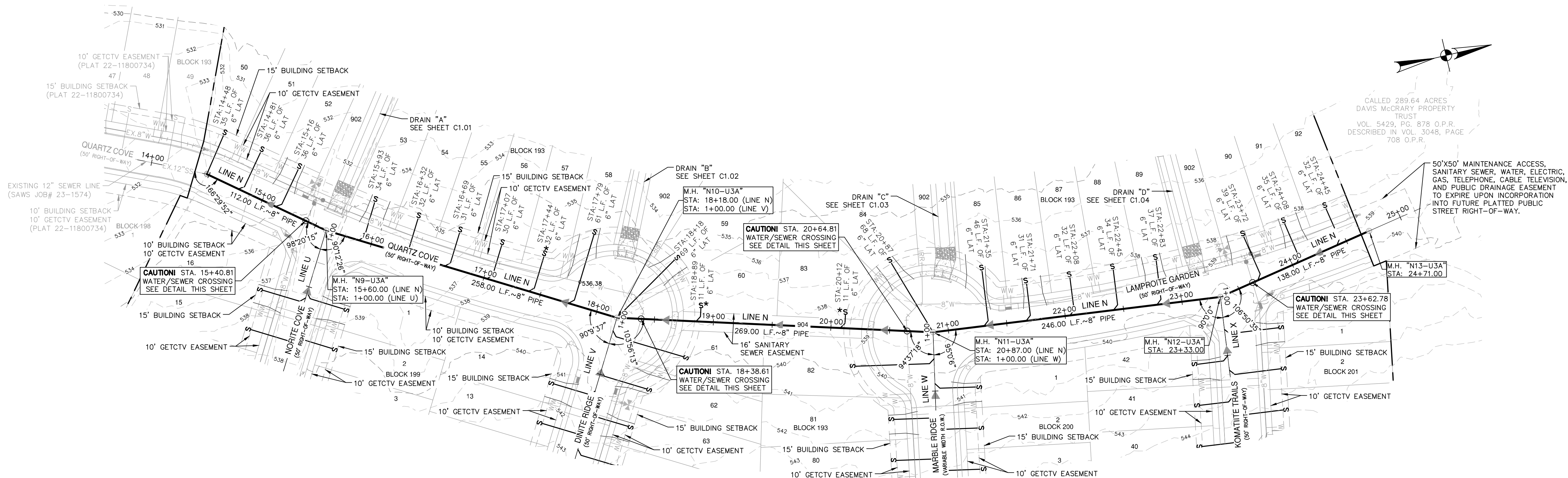




SEWER LEGEND

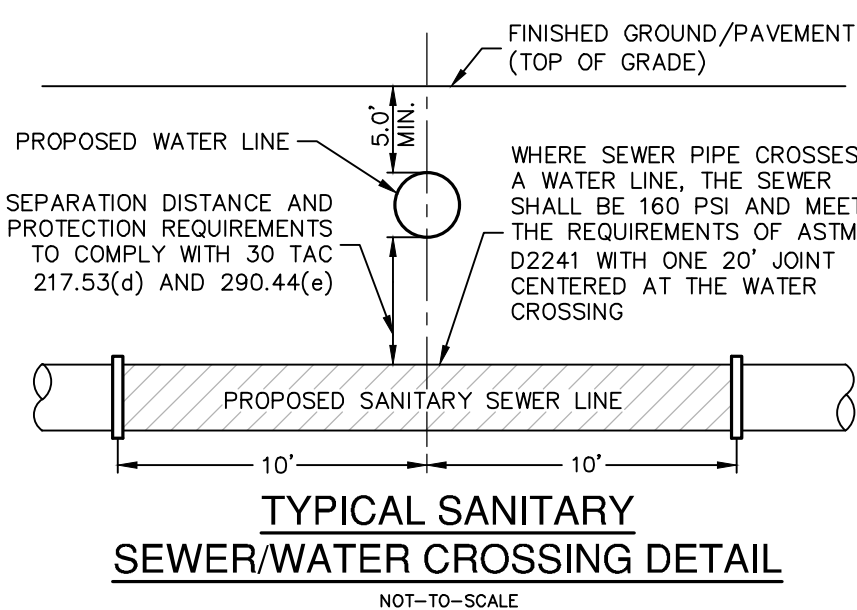
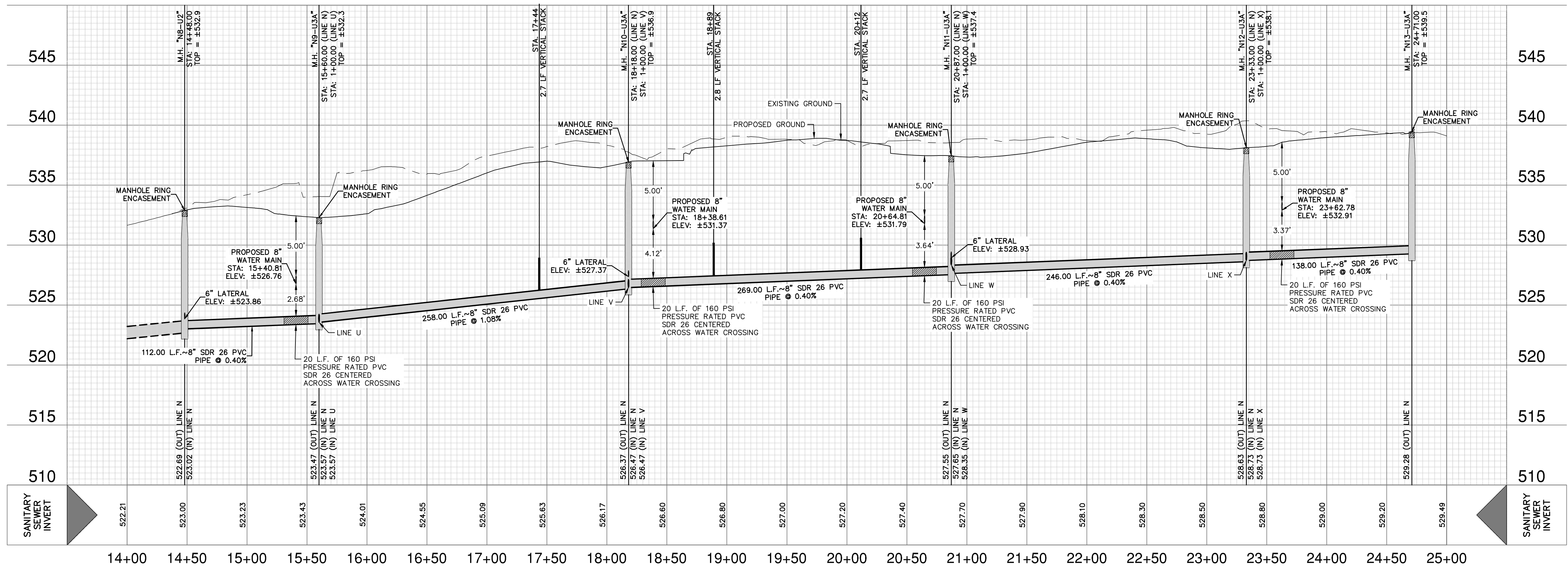


**PAPE-DAWSON
ENGINEERS**
2000 NW LOOP 410 | SAN ANTONIO, TX 78213 | 210.375.9000
TEXAS ENGINEERING FIRM #470 | TEXAS SURVEYING FIRM #10029800



SANITARY SEWER LINE "N"
STA. 14+48.00 TO 24+71.00

VERTICAL SCALE: 1" = 5'
HORIZONTAL SCALE: 1" = 50'



OPEN SPACE:
LOTS 292, 904-905, BLOCK 193, & LOT 902, BLOCK 194 ARE DESIGNATED AS OPEN SPACE, LANDSCAPE, DRAINAGE, ACCESS, SEWER, WATER, ELECTRIC, GAS, TELEPHONE AND CABLE TV EASEMENT.

CAUTION!!

CONTRACTOR SHALL BE REQUIRED TO LOCATE ALL PUBLIC OR PRIVATE UTILITIES INCLUDING BUT NOT LIMITING TO: WATER, SEWER, TELEPHONE AND FIBER OPTIC LINES, SITE LIGHTING ELECTRIC, SECONDARY ELECTRIC, PRIMARY ELECTRICAL DISTRIBUTION, LANDSCAPE IRRIGATION FACILITIES, AND GAS LINES. CONTRACTOR SHALL PROTECT THE ABOVE SAID UTILITIES AND BE RESPONSIBLE FOR THE ENGINEER IMMEDIATELY AND PRIOR TO CONSTRUCTION. THE CONTRACTOR SHALL CONTACT 1-800-DIG-TESS A MINIMUM OF 48 HOURS PRIOR TO THE START OF CONSTRUCTION. ANY DAMAGE TO EXISTING UTILITIES SHALL BE THE SOLE RESPONSIBILITY OF THE CONTRACTOR AND THE REPAIR SHALL BE AT CONTRACTOR'S WHOLE EXPENSE WHETHER THE UTILITY IS SHOWN ON THESE PLANS OR NOT.

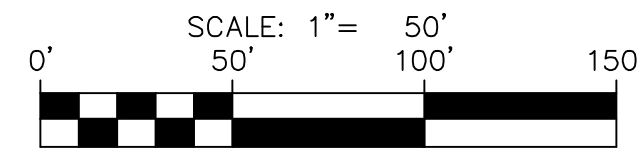
TRENCH EXCAVATION SAFETY PROTECTION:
CONTRACTOR AND/OR CONTRACTOR'S INDEPENDENTLY RETAINED EMPLOYEE OR STRUCTURAL DESIGN/ GEOTECHNICAL SAFETY/EQUIPMENT CONSULTANT, IF ANY, SHALL REVIEW THESE PLANS AND ANY AVAILABLE GEOTECHNICAL INFORMATION AND/OR RECORDS AND/OR RECORDS OF PREVIOUS TRENCH PROJECT WORK AREA IN ORDER TO IMPLEMENT CONTRACTOR'S TRENCH EXCAVATION SAFETY PROTECTION SYSTEMS, PROGRAMS AND/OR PROCEDURES FOR THE PROJECT DESCRIBED IN THE CONTRACT DOCUMENTS. CONTRACTOR SHALL PROVIDE ADEQUATE TRENCH EXCAVATION SAFETY PROTECTION THAT COMPLY WITH AS A MINIMUM, OSHA STANDARDS AND/OR ANY APPLICABLE STATE AND/OR LOCAL LAWS, ORDINANCES, AND/OR CONTRACTOR'S INDEPENDENTLY RETAINED EMPLOYEE OR SAFETY CONSULTANT SHALL IMPLEMENT A TRENCH SAFETY PROGRAM IN ACCORDANCE WITH THE TRENCH SAFETY PROGRAM AND/OR RECORDS OF PREVIOUS TRENCH PROJECT WORK AREA IN ORDER TO IMPLEMENT CONTRACTOR'S TRENCH EXCAVATION SAFETY PROTECTION SYSTEMS, PROGRAMS AND/OR PROCEDURES FOR THE PROJECT DESCRIBED IN THE CONTRACT DOCUMENTS.

SEWER (LOWER EAST SEWERSHED-DOS RIOS/ LEON CREEK)

DEVELOPER'S NAME: LENNAR HOMES OF TEXAS, INC.
ADDRESS: 100 NE LOOP 410, SUITE 1155
CITY: SAN ANTONIO STATE: TEXAS ZIP: 78216
PHONE# (210) 403-6200 FAX# N/A
SAWS BLOCK MAP# 202524 TOTAL UDEY. 164 TOTAL ACREAGE 22.70
TOTAL LINEAR FOOT OF PIPE: 4,140 LF ~ 8" PIPE PLAT NO. 23-11800210
NUMBER OF LOTS 164 SAWS JOB NO. 23-1596

STONE GARDEN - UNIT 3A
BEXAR COUNTY, TEXAS

PLAT NO. 23-11800210
JOB NO. 12482-09
DATE MAY 2024
DESIGNER BK
CHECKED DW DRAWN JR
SHEET C5.04



SEWER LEGEND

PROJECT LIMITS

EXISTING WATER

EXISTING SEWER

PROPOSED SEWER

PROPOSED WATER

PROPOSED SEWER LATERAL

FINISHED FLOOR ELEVATION
FOR SEWER

FF = XXXX.XX

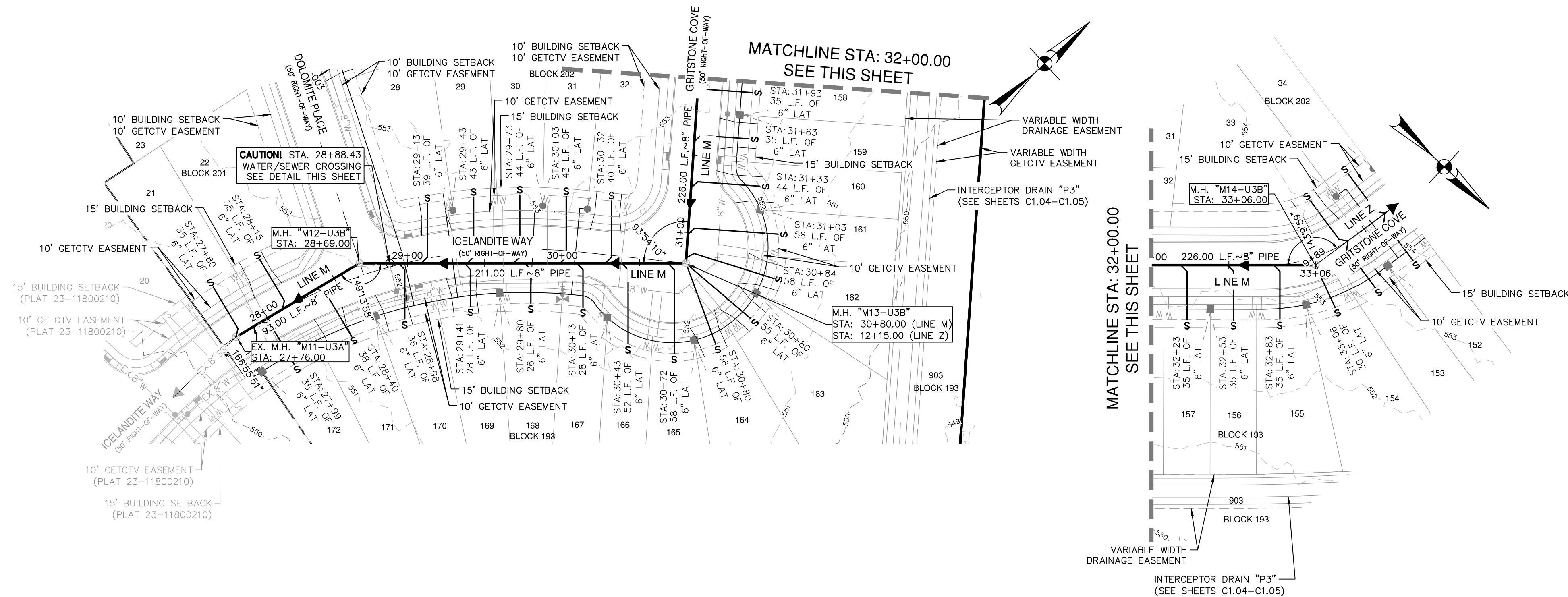
EXISTING TREES TO
REMAIN UNDISTURBED

VEHICULAR NON ACCESS EASEMENT

VNAE

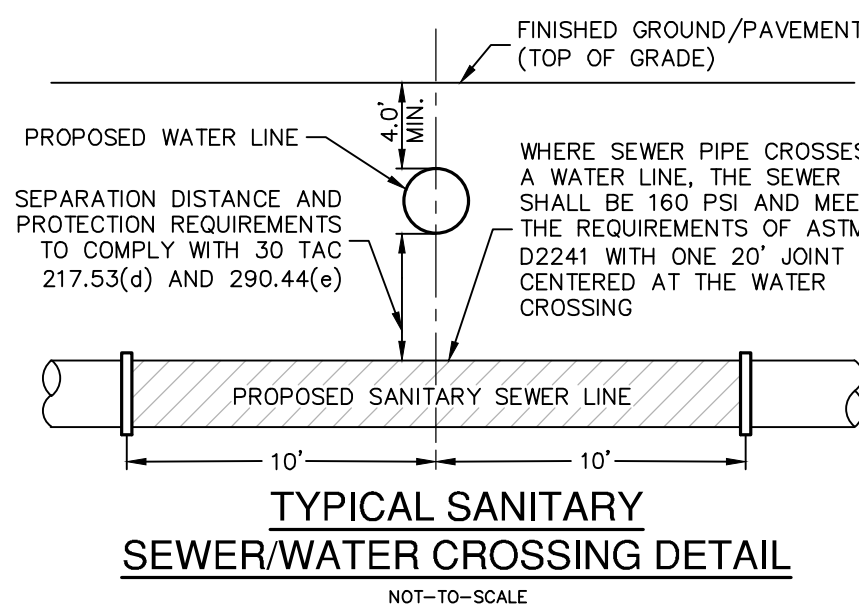
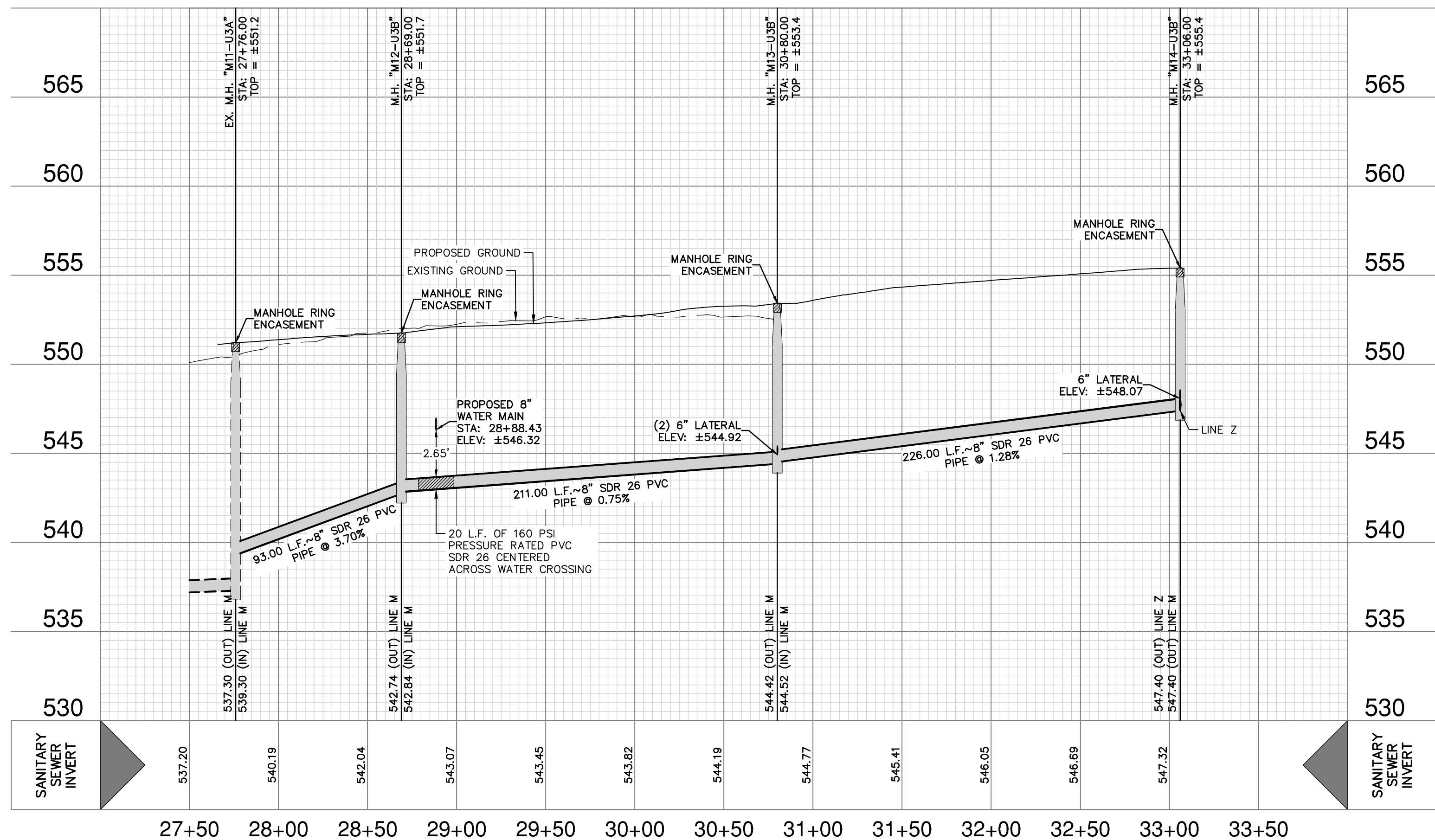
LATERAL WITH VERTICAL STACK
SEE PROFILE VIEW FOR LENGTH

*



SANITARY SEWER LINE "M"
STA. 27+76.00 TO END

VERTICAL SCALE: 1" = 5'
HORIZONTAL SCALE: 1" = 50'



CAUTION!!

CONTRACTOR SHALL BE REQUIRED TO LOCATE ALL PUBLIC OR PRIVATE UTILITIES INCLUDING BUT NOT LIMITING TO: WATER, SEWER, TELEPHONE AND FIBER OPTIC LINES, SITE LIGHTING ELECTRIC, SECONDARY ELECTRIC, PRIMARY ELECTRICAL DUCTBANKS, LANDSCAPE IRRIGATION FACILITIES, AND GAS LINES ANY UTILITY CONFLICTS THAT ARISE SHOULD BE COMMUNICATED TO THE ENGINEER IMMEDIATELY AND PRIOR TO CONSTRUCTION. THE CONTRACTOR SHALL BE RESPONSIBLE TO OBTAIN A MINIMUM OF 14 DAYS PRIOR TO THE START OF CONSTRUCTION. ANY DAMAGE TO EXISTING UTILITIES SHALL BE THE SOLE RESPONSIBILITY OF THE CONTRACTOR AND THE REPAIR SHALL BE AT CONTRACTOR'S SOLE EXPENSE WHETHER THE UTILITY IS SHOWN ON THESE PLANS OR NOT.

TRENCH EXCAVATION SAFETY PROTECTION:

CONTRACTOR AND/OR CONTRACTOR'S INDEPENDENTLY RETAINED EMPLOYEE OR STRUCTURAL DESIGN/ GEOTECHNICAL/ SAFETY/EQUIPMENT CONSULTANT, IF ANY, SHALL REVIEW THESE PLANS AND ANY AVAILABLE GEOTECHNICAL/GEOTECHNICAL INFORMATION AND THE ANTICIPATED INSTALLATION SITE, WITHIN THE PROJECT WORK AREA, TO DETERMINE THAT THE CONTRACTOR'S PROPOSED EXCAVATION SAFETY PROTECTION SYSTEMS, PROGRAMS AND/OR PROCEDURES FOR THE PROJECT DESCRIBED IN THE CONTRACT DOCUMENTS, THE CONTRACTOR'S IMPLEMENTATION OF THESE SYSTEMS, PROGRAMS AND/OR PROCEDURES SHALL PROVIDE FOR ADEQUATE TRENCH EXCAVATION SAFETY PROTECTION IN ACCORDANCE WITH ALL CURRENTLY APPLICABLE STANDARDS FOR TRENCH EXCAVATIONS. SPECIFICALLY, CONTRACTOR AND/OR CONTRACTOR'S INDEPENDENTLY RETAINED EMPLOYEE OR SAFETY CONSULTANT SHALL IMPLEMENT TRENCH SAFETY PROGRAM IN ACCORDANCE WITH ALL APPLICABLE TRENCH SAFETY PROGRAM STANDARDS AND REQUIREMENTS. CONTRACTOR SHALL BE RESPONSIBLE FOR THE ACTIVITIES OF INDIVIDUALS WORKING IN AND AROUND TRENCH EXCAVATION.

OPEN SPACE:

LOT 903 BLOCK 193 ARE DESIGNATED AS OPEN SPACE, LANDSCAPE, DRAINAGE, ACCESS, SEWER, WATER, ELECTRIC, GAS, TELEPHONE, AND CABLE TV EASEMENT.

LOWER (EAST SEWERSHED-SALADO CREEK WRC)

DEVELOPER'S NAME: LENNAR HOMES OF TEXAS, INC.
ADDRESS: 100 NF LOOP 410, SUITE 1155
CITY: SAN ANTONIO STATE: TEXAS ZIP: 78216
PHONE# (210) 403-6200 FAX# N/A
202526 204526
SAWS BLOCK MAP# 204526 TOTAL EDU'S 197 TOTAL ACREAGE 23.20
TOTAL LINEAR FOOTAGE OF PIPE 3,614 LF ~ 8" PIPE PLAT NO 23-11800212
NUMBER OF LOTS 197 SAWS JOB NO. 23-1617

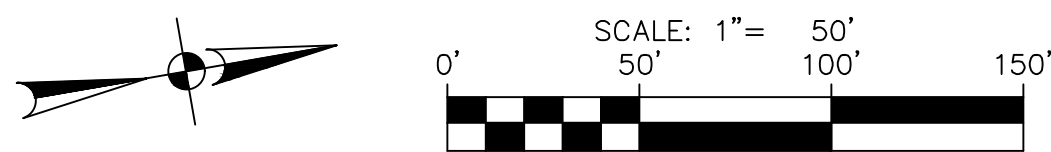
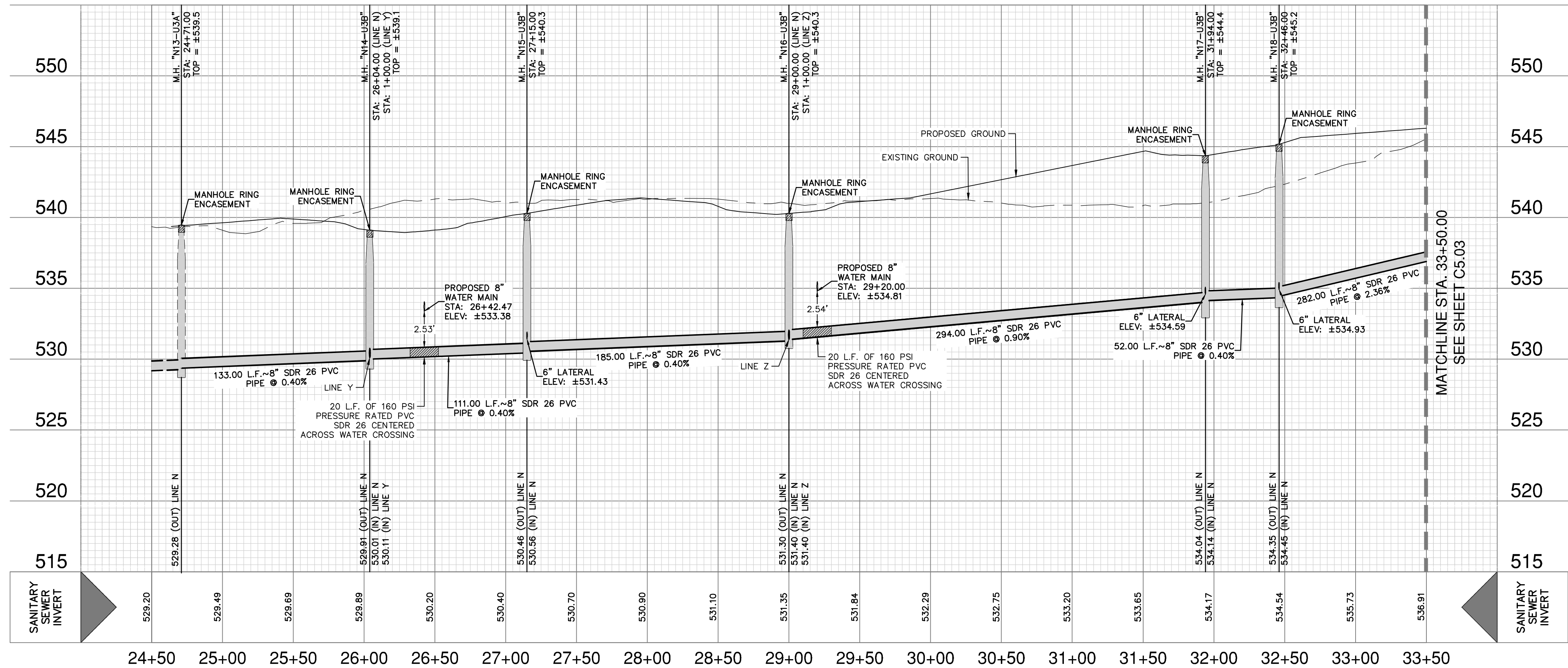
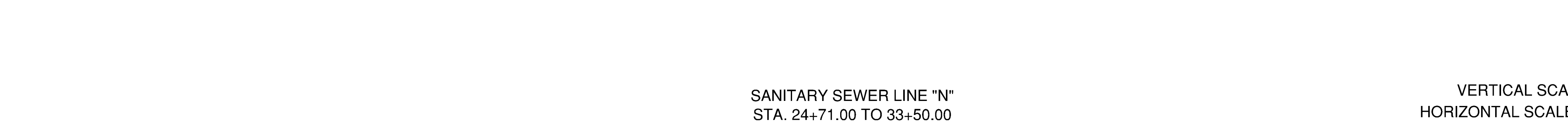
[illegible]

**PAPE-DAWSON
ENGINEERS**

2000 NW LOOP 410 | SAN ANTONIO, TX 78213 | 210.375.6000
TEXAS ENGINEERING FIRM #470 | TEXAS SURVEYING FIRM #10028600

STONE GARDEN - UNIT 3B
BEXAR COUNTY, TEXAS

PLAT NO. 23-1180021
JOB NO. 12482-10
DATE MAY 2024
DESIGNER BK
CHECKED DW DRAWN JR
SHEET C5.01



SEWER LEGEND

PROJECT LIMITS

EXISTING WATER

EXISTING SEWER

PROPOSED SEWER

PROPOSED WATER

PROPOSED SEWER LATERAL

FINISHED FLOOR ELEVATION
FOR SEWER

EXISTING TREES TO
REMAIN UNDISTURBED

VEHICULAR NON ACCESS EASEMENT

LATERAL WITH VERTICAL STACK
SEE PROFILE VIEW FOR LENGTH

W

SS

SS

MANHOLE

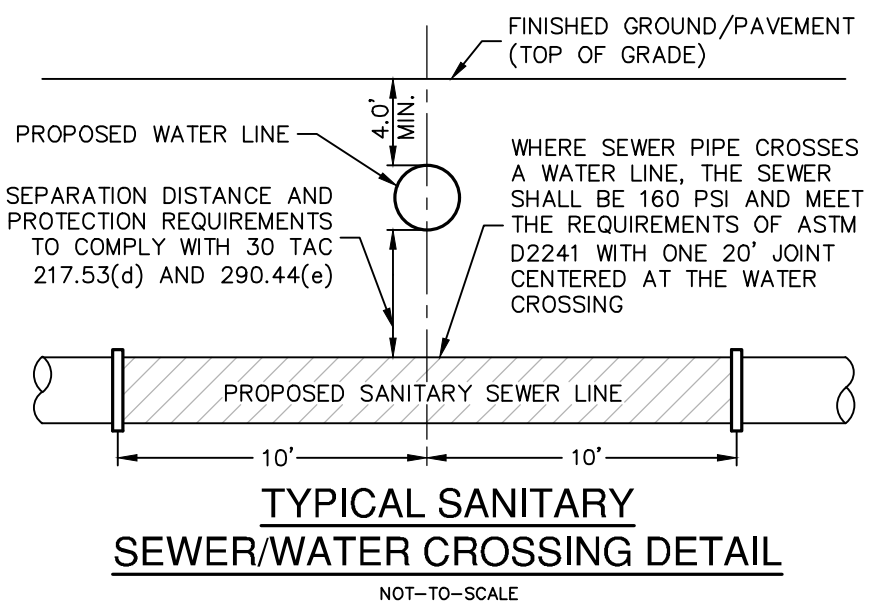
FIRE HYDRANT

W

FF = XXXX.XX

VNAE

*



CAUTION!!! CONTRACTOR SHALL BE REQUIRED TO LOCATE ALL PUBLIC OR PRIVATE UTILITIES INCLUDING BUT NOT LIMITING TO, WATER, SEWER, TELEPHONE AND FIBER OPTIC LINES, SITE LIGHTING ELECTRIC, SECONDARY ELECTRIC, PRIMARY ELECTRIC DUCTBANKS, LANDSCAPE IRRIGATION FACILITIES, AND GAS LINES. ANY UTILITY CONFLICTS THAT ARISE SHOULD BE COMMUNICATED TO THE CONTRACTOR AND PRIOR TO CONSTRUCTION, THE CONTRACTOR SHALL CONTACT 1-800-DIG-TESS A MINIMUM OF 48 HOURS PRIOR TO THE START OF CONSTRUCTION. ANY DAMAGE TO EXISTING UTILITIES SHALL BE THE RESPONSIBILITY OF THE CONTRACTOR AND THE REPAIR SHALL BE AT THE CONTRACTOR'S EXPENSE. WHETHER THE UTILITY IS SHOWN ON THESE PLANS OR NOT.

TRENCH EXCAVATION SAFETY PROTECTION:

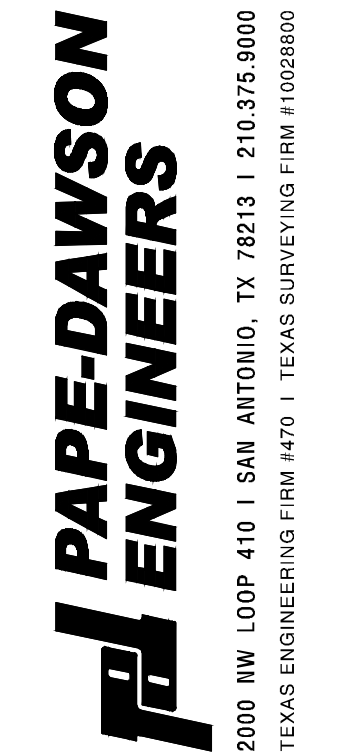
CONTRACTOR AND/OR CONTRACTOR'S INDEPENDENTLY RETAINED EMPLOYEE OR STRUCTURAL DESIGN/ GEOTECHNICAL/ SAFETY/EQUIPMENT CONSULTANT, IF ANY, SHALL REVIEW THESE PLANS AND ANY AVAILABLE GEOTECHNICAL INFORMATION AND FIELD DATA, AND ANTICIPATE INSTALLATION SITES WITHIN THE PROJECT WORK AREA IN ORDER TO IMPLEMENT CONTRACTOR'S TRENCH EXCAVATION SAFETY PROTECTION SYSTEMS, PROGRAMS AND/OR PROCEDURES FOR THE PROJECT DESCRIBED IN THE CONTRACT DOCUMENTS. CONTRACTOR SHALL BE RESPONSIBLE FOR THE SAFETY OF THE PROJECT AND AND/OR PROCEDURES SHALL PROVIDE FOR ADEQUATE TRENCH EXCAVATION SAFETY PROTECTION THAT COMPLY WITH AS A MINIMUM, OSHA STANDARDS FOR TRENCH EXCAVATIONS. SPECIFICALLY, CONTRACTOR AND/OR CONTRACTOR'S INDEPENDENTLY RETAINED EMPLOYEE OR SAFETY CONSULTANT SHALL BE RESPONSIBLE FOR THE TRENCH SAFETY PROGRAMS AND PROCEDURES IN ACCORDANCE WITH OSHA STANDARDS GOVERNING THE PRESENCE AND ACTIVITIES OF INDIVIDUALS WORKING IN AND AROUND TRENCH EXCAVATION.

OPEN SPACE:

LOT 93 BLOCK 193 ARE DESIGNATED AS OPEN SPACE, LANDSCAPE, DRAINAGE, ACCESS, SEWER, WATER, ELECTRIC, GAS, TELEPHONE, AND CABLE TV EASEMENT.

LOWER (EAST SEWERSHED-SALADO CREEK WRC)

DEVELOPER'S NAME: LENNAR HOMES OF TEXAS, INC.	
ADDRESS: 100 NE LOOP 410, SUITE 1155	
CITY: SAN ANTONIO	STATE: TEXAS ZIP: 78216
PHONE# (210) 403-6200	FAX# N/A
204526-204528	
SAWS BLOCK MAP# 204526-204528 TOTAL EDU'S 197 TOTAL ACRES 23.20	
TOTAL LINEAR FOOTAGE OF PIPE: 3,614 LF ~ 8" PIPE PLAT NO. 23-11800212	
NUMBER OF LOTS 197	SAWS JOB NO. 23-1617



STONE GARDEN - UNIT 3B
BEXAR COUNTY, TEXAS

SANITARY SEWER LINE N PLAN & PROFILE
(STA. 24+71.00 TO 33+50.00)

PLAT NO. 23-11800212
JOB NO. 12482-10
DATE MAY 2024
DESIGNER BK
CHECKED DW DRAWN JR
SHEET C5.02