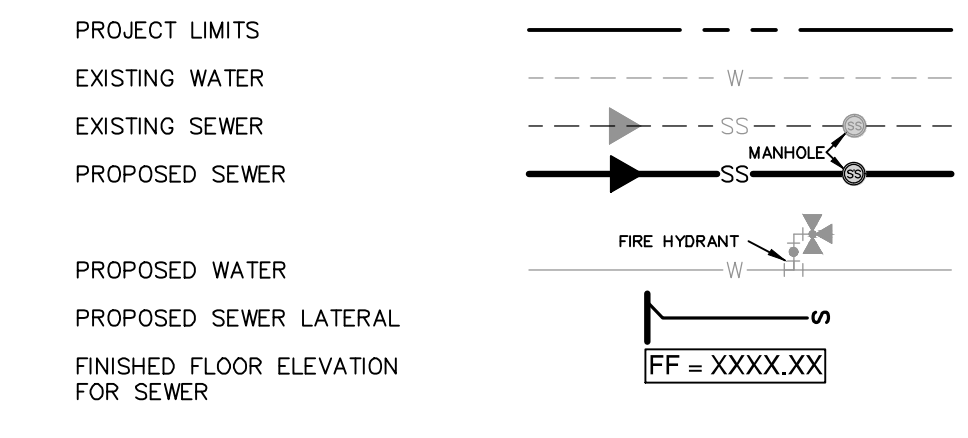
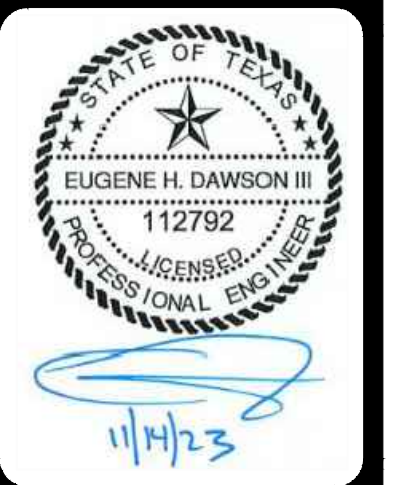


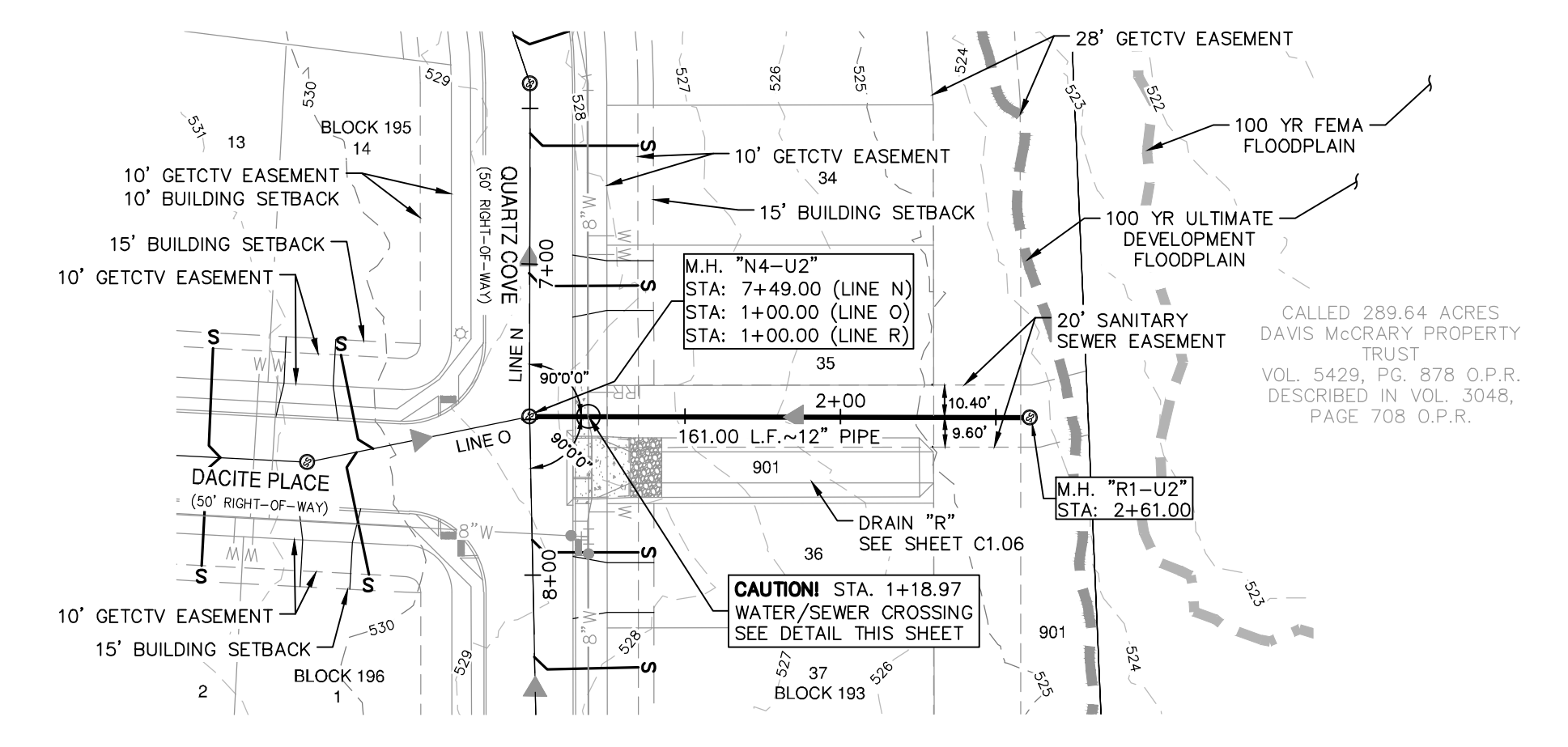
SEWER LEGEND



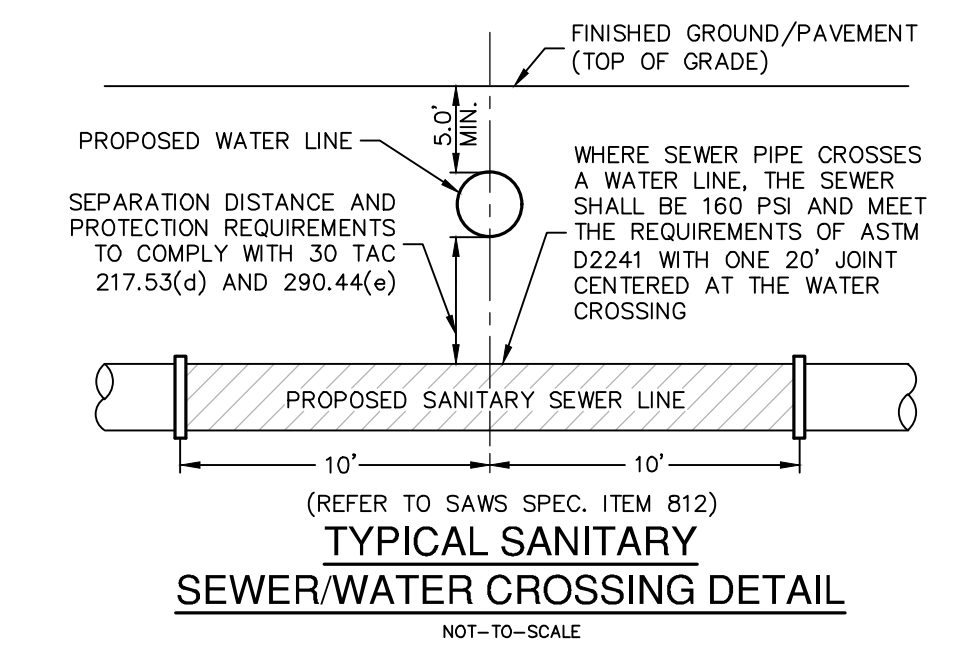
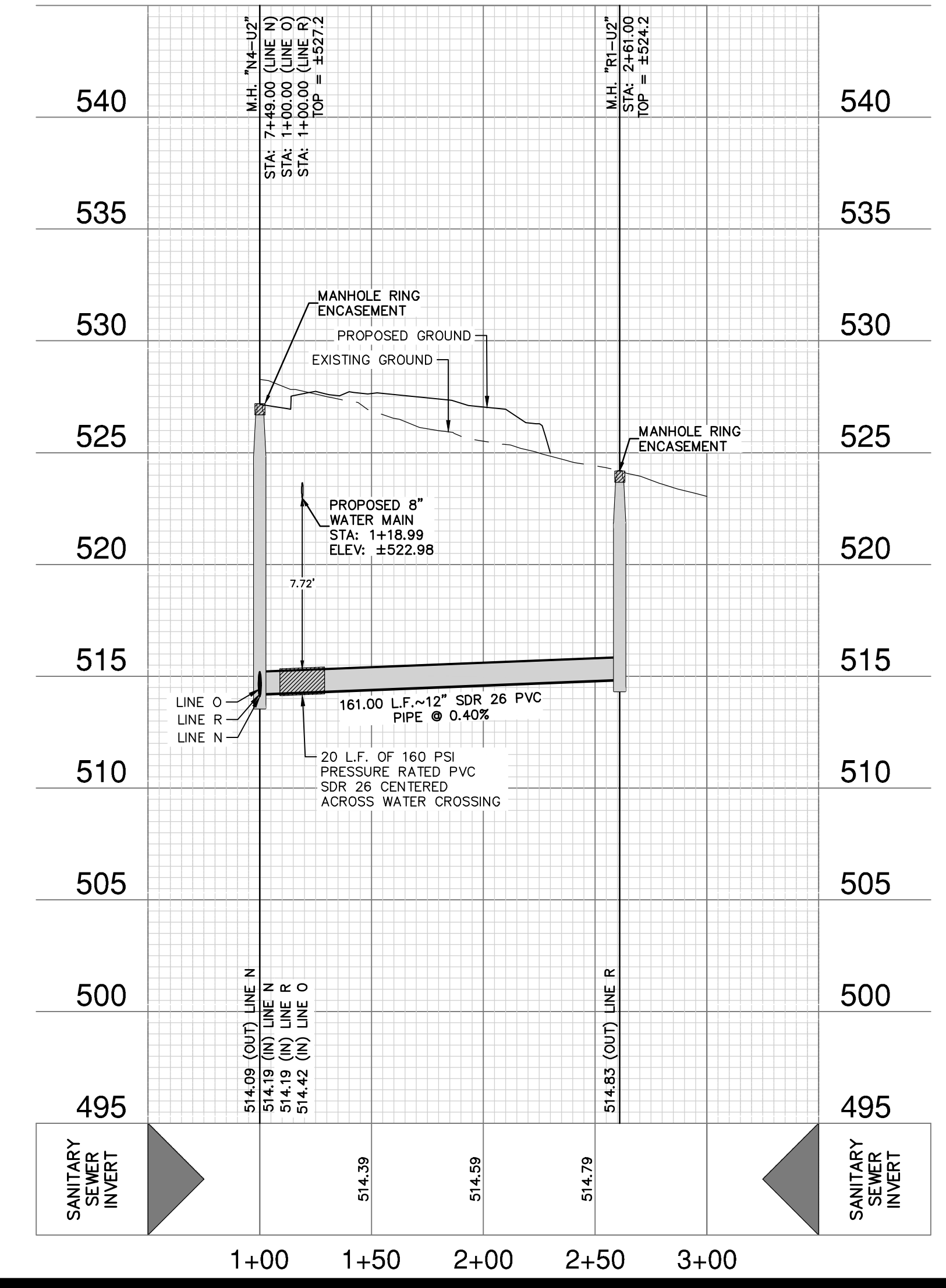
DATE	
NO.	REVISION



PAPE-DAWSON ENGINEERS
 SAN ANTONIO | AUSTIN | HOUSTON | FORT WORTH | DALLAS
 2000 HW LOOP 410 | SAN ANTONIO, TX 78213 | 210.375.9000
 TEXAS ENGINEERING FIRM #470 | TEXAS SURVEYING FIRM #10088800



SANITARY SEWER LINE "R"
 STA. 1+00.00 TO END
 VERTICAL SCALE: 1" = 5'
 HORIZONTAL SCALE: 1" = 50'



CAUTION!!
 CONTRACTOR SHALL BE REQUIRED TO LOCATE ALL PUBLIC OR PRIVATE UTILITIES INCLUDING BUT NOT LIMITING TO: WATER, SEWER, TELEPHONE AND FIBER OPTIC LINES, SITE LIGHTING, ELECTRIC, SECONDARY ELECTRIC, PRIMARY ELECTRICAL DUCTBANKS, LANDSCAPE IRRIGATION FACILITIES, AND GAS LINES. ANY UTILITY CONFLICTS THAT ARISE SHOULD BE COMMUNICATED TO THE ENGINEER IMMEDIATELY AND PRIOR TO CONSTRUCTION. THE CONTRACTOR SHALL CONTACT 1-800-DIG-TESS A MINIMUM OF 48 HOURS PRIOR TO THE START OF CONSTRUCTION. ANY DAMAGE TO EXISTING UTILITIES SHALL BE THE SOLE RESPONSIBILITY OF THE CONTRACTOR AND THE REPAIR SHALL BE AT CONTRACTOR'S SOLE EXPENSE WHETHER THE UTILITY IS SHOWN ON THESE PLANS OR NOT.

TRENCH EXCAVATION SAFETY PROTECTION:
 CONTRACTOR AND/OR CONTRACTOR'S INDEPENDENTLY RETAINED EMPLOYEE OR STRUCTURAL DESIGN/ GEOTECHNICAL/ SAFETY/EQUIPMENT CONSULTANT, IF ANY, SHALL REVIEW THESE PLANS AND ANY AVAILABLE GEOTECHNICAL INFORMATION AND THE ANTICIPATED INSTALLATION SITES WITHIN THE PROJECT WORK AREA IN ORDER TO IMPLEMENT CONTRACTOR'S TRENCH EXCAVATION SAFETY PROTECTION SYSTEMS, PROGRAMS AND/OR PROCEDURES FOR THE PROJECT DESCRIBED IN THE CONTRACT DOCUMENTS. THE CONTRACTOR'S IMPLEMENTATION OF THESE SYSTEMS, PROGRAMS AND/OR PROCEDURES SHALL PROVIDE FOR ADEQUATE TRENCH EXCAVATION SAFETY PROTECTION THAT COMPLY WITH AS A MINIMUM, OSHA STANDARDS FOR TRENCH EXCAVATIONS. SPECIFICALLY, CONTRACTOR AND/OR CONTRACTOR'S INDEPENDENTLY RETAINED EMPLOYEE OR SAFETY CONSULTANT SHALL IMPLEMENT A TRENCH SAFETY PROGRAM IN ACCORDANCE WITH OSHA STANDARDS GOVERNING THE PRESENCE AND ACTIVITIES OF INDIVIDUALS WORKING IN AND AROUND TRENCH EXCAVATION.

SEWER (LOWER-EAST SEWERSHED-DOS RIOS/LEON CREEK)

DEVELOPER'S NAME:	LENNAR HOMES OF TEXAS
ADDRESS:	100 NE LOOP 410, STE 1155
CITY:	SAN ANTONIO, STATE: TEXAS, ZIP: 78216
PHONE#	(210) 403-6200 FAX# N/A
SAWS BLOCK MAP#	204524 TOTAL EDU'S 291 TOTAL ACREAGE 45.15
TOTAL LINEAR FOOTAGE OF PIPE:	1,843 L.F. 12" PVC PLAT NO. 22-11800734
NUMBER OF LOTS	291 SAWS JOB NO. 23-1574

STONE GARDEN - UNIT 2A
 BEXAR COUNTY, TEXAS
 SS LINE R PLAN & PROFILE (STA 1+00.00 TO END)

PLAT NO.	22-11800734
JOB NO.	12482-04
DATE	AUGUST 2023
DESIGNER	JG
CHECKED	DW DRAWN TC
SHEET	C5.15

DATE: Nov 17, 2023 11:25am User: JD, N/A
 FILE: P:\24\82\04\Unit-2A\04\SS\248204-12A_LINE_R.dwg

THIS DOCUMENT HAS BEEN PRODUCED FROM MATERIAL THAT WAS STORED AND/OR TRANSMITTED ELECTRONICALLY AND MAY HAVE BEEN UNADVERTENTLY ALTERED. RELY ONLY ON FINAL HARDCOPY MATERIALS BEARING THE CONSULTANT'S ORIGINAL SIGNATURE AND SEAL. AERIAL IMAGERY PROVIDED BY GOOGLE; UNLESS OTHERWISE NOTED. IMAGERY © 2016, DAPCO, Digital Globe, Texas Orthology Program, USDA Farm Service Agency.