

TRENCH EXCAVATION SAFETY PROTECTION

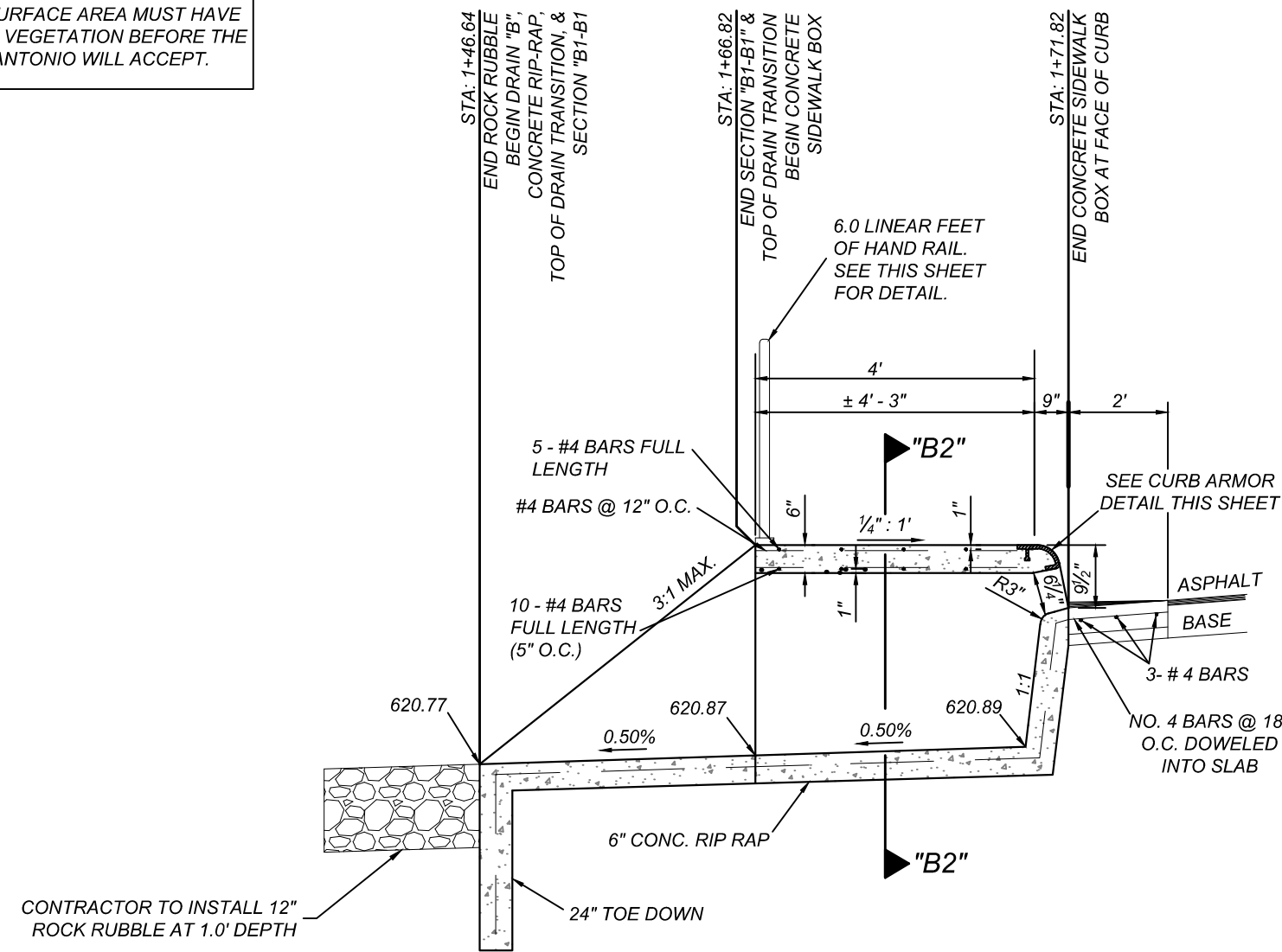
CONTRACTOR AND/OR CONTRACTOR'S INDEPENDENTLY RETAINED EMPLOYEE OR STRUCTURAL DESIGN/GEOTECHNICAL SAFETY/EQUIPMENT CONSULTANT, IF ANY, SHALL REVIEW THESE PLANS AND AVAILABLE GEOTECHNICAL INFORMATION AND THE ANTICIPATED INSTALLATION SITES WITHIN THE PROJECT WORK AREA IN ORDER TO IMPLEMENT CONTRACTOR'S TRENCH EXCAVATION SAFETY PROTECTION SYSTEMS, PROGRAMS AND/OR PROCEDURES. THE CONTRACTOR'S IMPLEMENTATION OF THESE SYSTEMS, PROGRAMS AND/OR PROCEDURES SHALL PROVIDE FOR ADEQUATE TRENCH EXCAVATION SAFETY PROTECTION THAT COMPLIES WITH AS A MINIMUM, OSHA STANDARDS FOR TRENCH EXCAVATIONS. SPECIFICALLY, CONTRACTOR AND/OR CONTRACTOR'S INDEPENDENTLY RETAINED EMPLOYEE OR SAFETY CONSULTANT SHALL IMPLEMENT A TRENCH SAFETY PROGRAM IN ACCORDANCE WITH OSHA STANDARDS GOVERNING THE PRESENCE AND ACTIVITIES OF INDIVIDUALS WORKING IN AND AROUND TRENCH EXCAVATION.

CAUTION!!

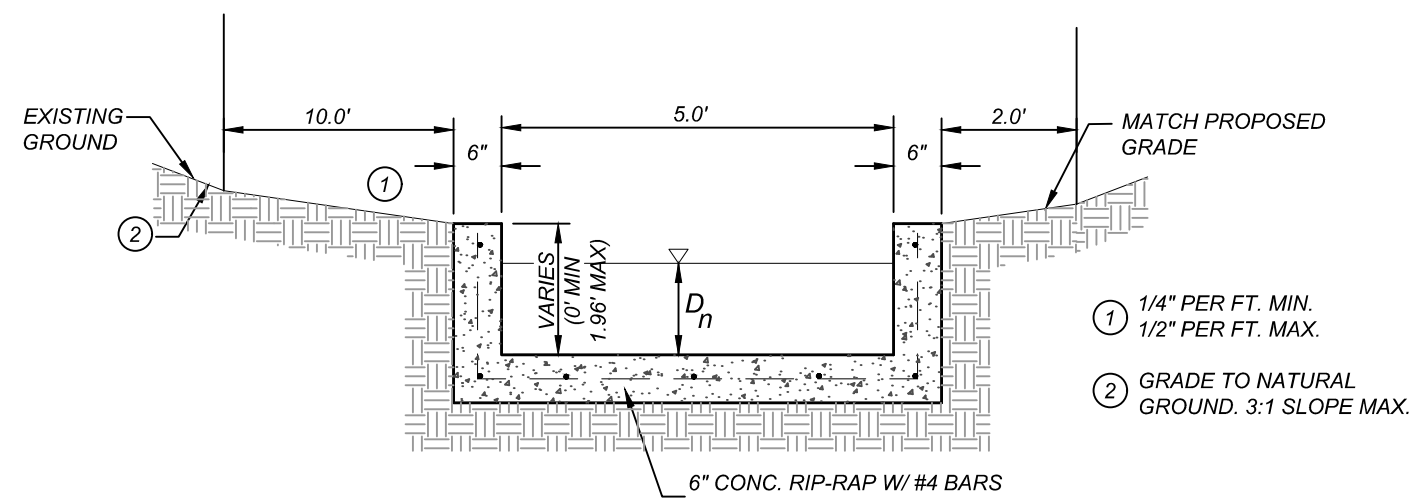
THE CONTRACTOR SHALL BE REQUIRED TO LOCATE ALL PUBLIC OR PRIVATE UTILITIES INCLUDING BUT NOT LIMITED TO: WATER, SEWER, TELEPHONE AND FIBER OPTIC LINES, SITE LIGHTING ELECTRIC, SECONDARY ELECTRIC, PRIMARY ELECTRICAL, DUCT BANKS, LANDSCAPE IRRIGATION FACILITIES, AND GAS LINES. ANY UTILITY CONFLICTS THAT ARISE SHOULD BE COMMUNICATED TO THE ENGINEER IMMEDIATELY AND PRIOR TO CONSTRUCTION. THE CONTRACTOR SHALL CONTACT 1-800-DIG-TEST A MINIMUM OF 48 HOURS PRIOR TO THE START OF CONSTRUCTION. ANY DAMAGE TO EXISTING UTILITIES SHALL BE THE SOLE RESPONSIBILITY OF THE CONTRACTOR AND THE REPAIR SHALL BE AT CONTRACTOR'S SOLE EXPENSE WHETHER THE UTILITY IS SHOWN ON THESE PLANS OR NOT.

NOTE:

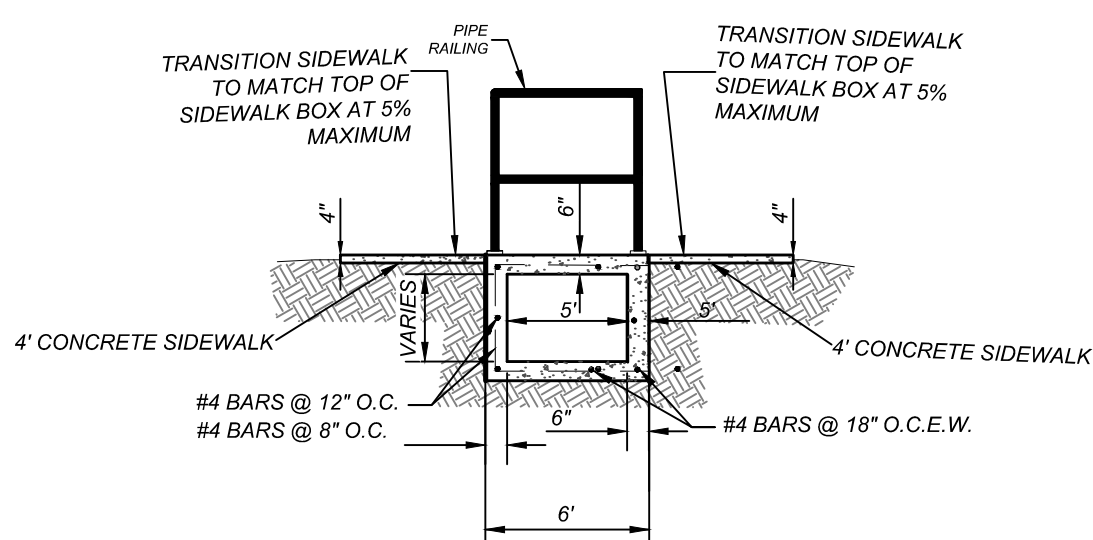
1. ALL CONCRETE SHALL DEVELOP A MINIMUM COMPRESSIVE STRENGTH OF NOT LESS THAN 3000 PSI IN 28 DAYS.
2. ANY DISTURBED AREAS WILL BE VEGETATED BY SEEDING OR SODDING. EIGHTY-FIVE PERCENT OF THE DISTURBED SURFACE AREA MUST HAVE ESTABLISHED VEGETATION BEFORE THE CITY OF SAN ANTONIO WILL ACCEPT.



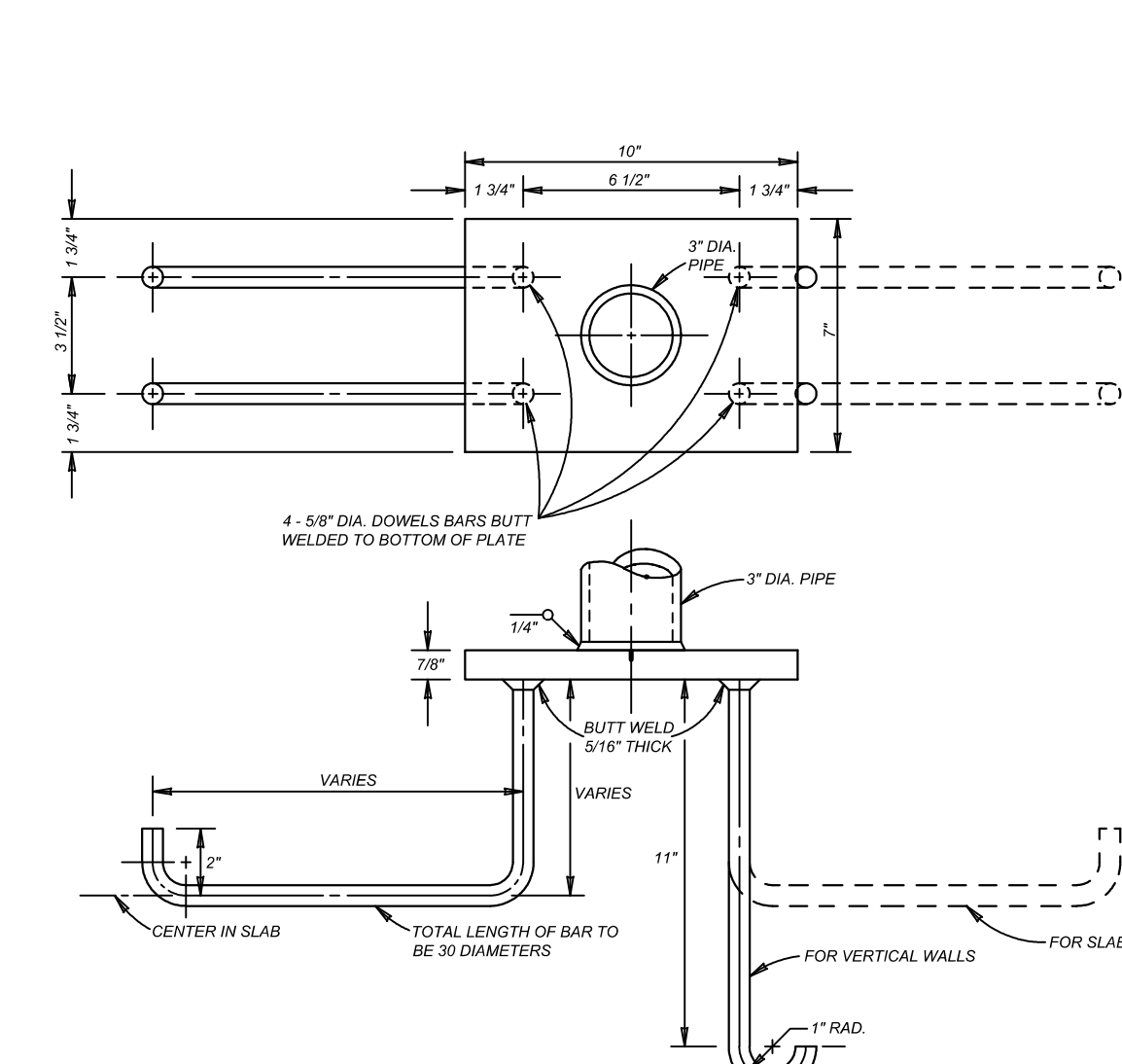
SIDEWALK BOX DETAIL
N.T.S.



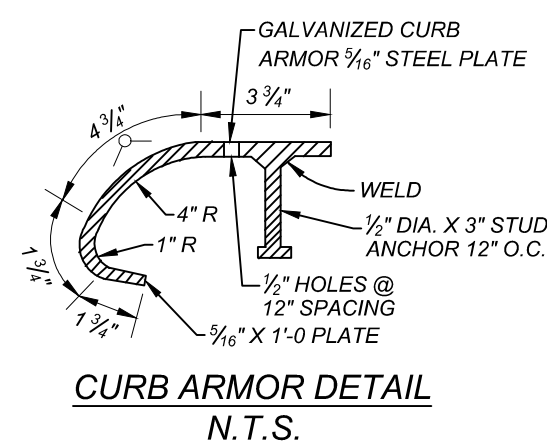
SECTION "B1 - B1"
STA: 1+46.64 - STA: 1+66.82
N.T.S.



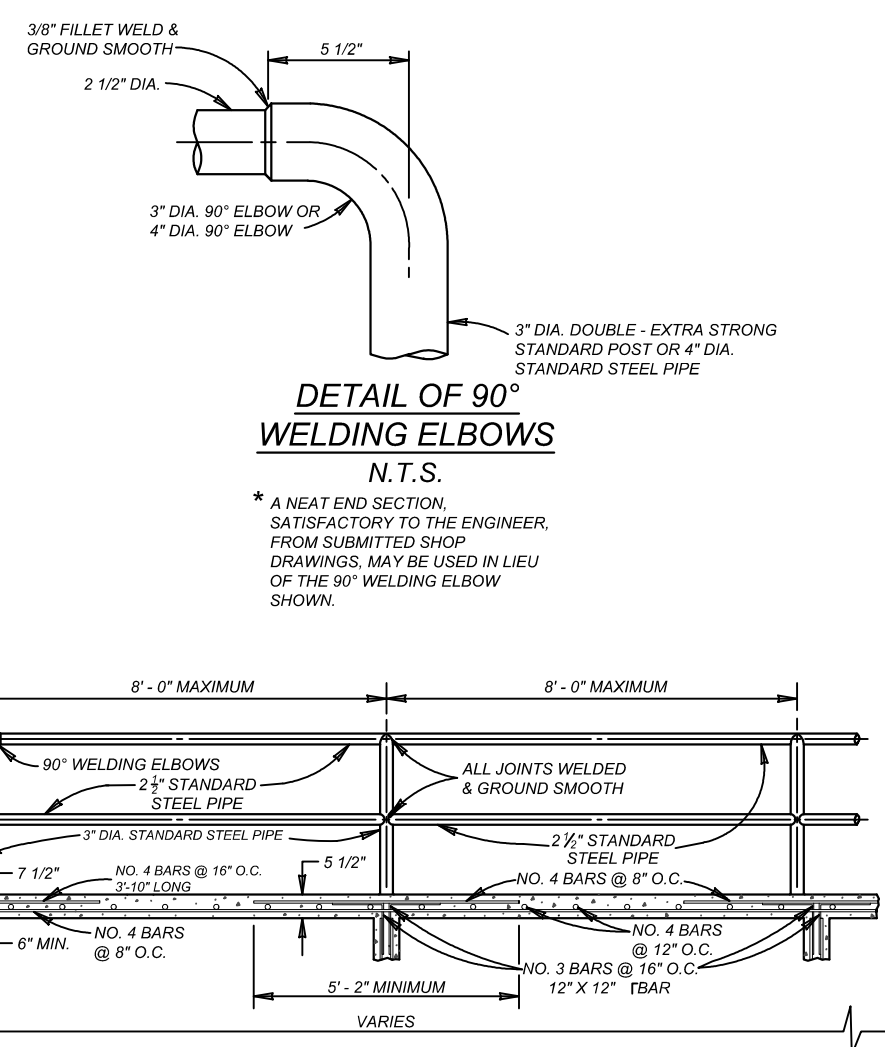
SECTION "B2-B2"
N.T.S.



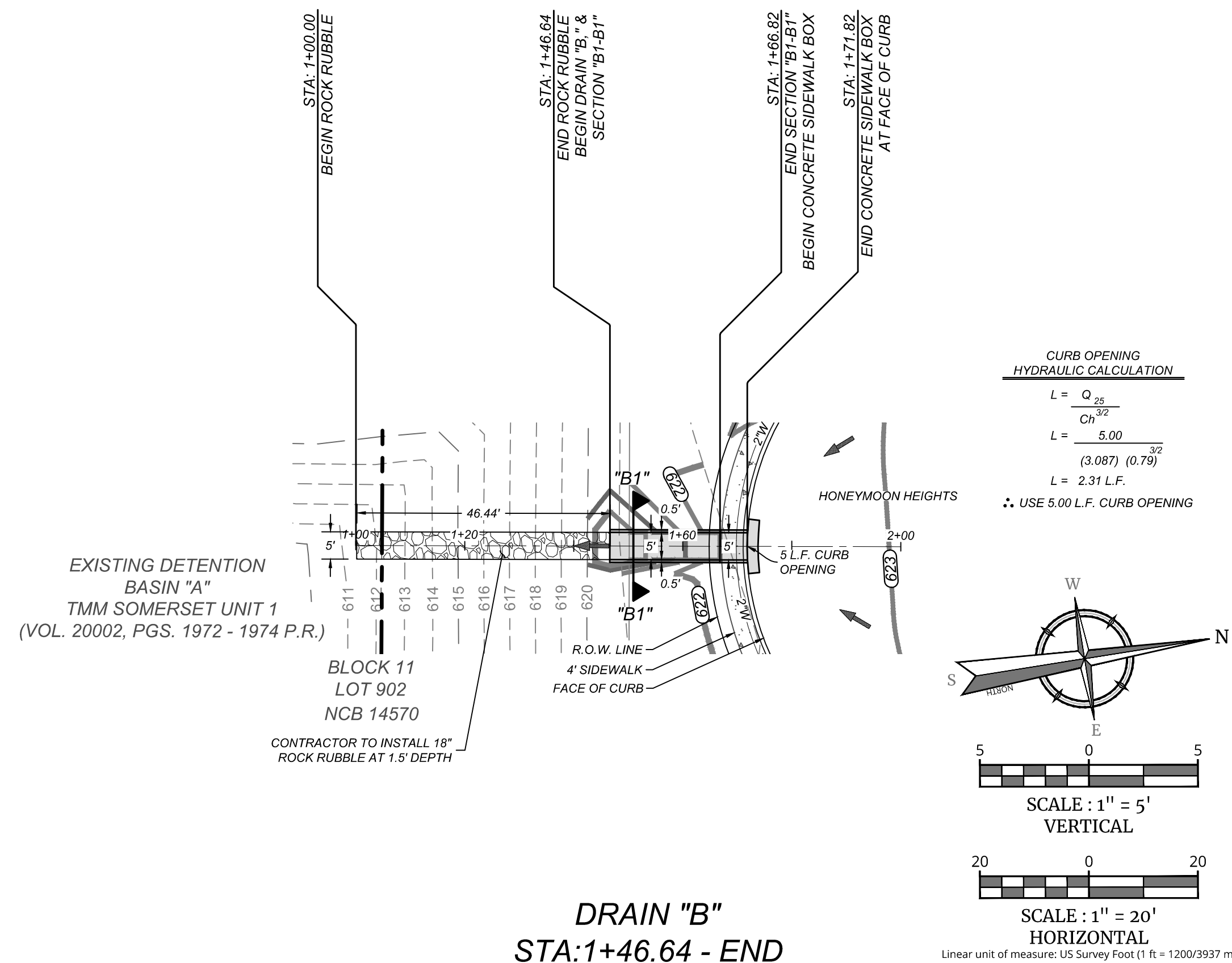
PIPE ANCHORAGE DETAILS
N.T.S.



CURB ARMOR DETAIL
N.T.S.



TYPICAL SIDEWALK BRIDGE & SIDEWALK PIPE RAILING SECTION
N.T.S.



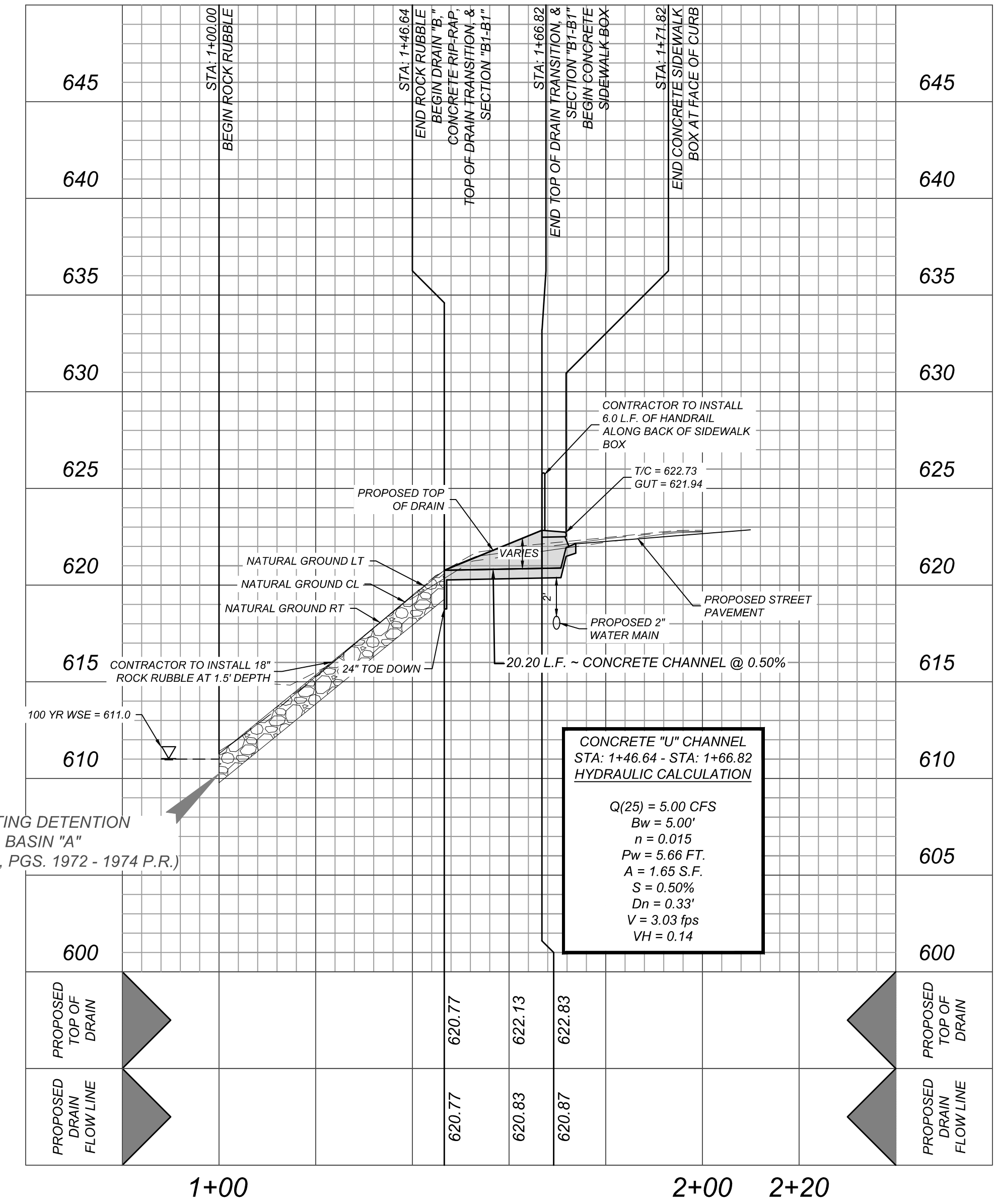
CURB OPENING HYDRAULIC CALCULATION

$$L = \frac{Q \cdot 2.30}{C \cdot H^{3/2}}$$

$$L = \frac{5.00}{(3.067) \cdot (0.79)^{3/2}}$$

$$L = 2.31 \text{ L.F.}$$

USE 5.00 L.F. CURB OPENING



CONCRETE "U" CHANNEL
STA: 1+46.64 - STA: 1+66.82
HYDRAULIC CALCULATION

$$Q(25) = 5.00 \text{ CFS}$$

$$Bw = 5.00'$$

$$n = 0.015$$

$$Pw = 5.66 \text{ FT.}$$

$$A = 1.65 \text{ S.F.}$$

$$S = 0.50\%$$

$$Dm = 0.33'$$

$$V = 3.03 \text{ fps}$$

$$VH = 0.14$$

Colliers Engineering & Design
www.colliersengineering.com

Formerly known as **KFW**

811 PROTECT YOURSELF
ALL STATES REQUIRE NOTIFICATION OF EXCAVATORS, DESIGNERS, OR ANY PERSON PREPARING TO DISTURB THE EARTH'S SURFACE ANYWHERE IN ANY STATE
FOR STATE SPECIFIC DIRECT PHONE NUMBERS VISIT: WWW.CALL811.COM

STATE OF TEXAS
JEFFREY W. MARTIN
139094
LICENSED PROFESSIONAL ENGINEER
4/15/26

JEFFREY W. MARTIN
TEXAS LICENSED PROFESSIONAL ENGINEER
LICENSE NUMBER: 139094
COLLIERS ENGINEERING & DESIGN, INC.
TBPE Firm#: F-14909 - TBPLS Firm#: 10194550

TMM SOMERSET, UNIT 4
PLAT# 25-11800496

FOR
KB HOME LONESTAR, INC.

CITY OF SAN ANTONIO
BEXAR COUNTY
TEXAS

Colliers Engineering & Design
SAN ANTONIO (KFW)
3421 Paesanos Parkway
San Antonio, TX 78231
Phone: 210.979.8444
COLLIERS ENGINEERING & DESIGN, INC.
TBPE Firm#: F-14909 - TBPLS Firm#: 10194550

SCALE:	DATE:	DRAWN BY:	CHECKED BY:
AS SHOWN	10/20/25	JA	CG

PROJECT NUMBER: 418-14-08 DRAWING NAME: DR181408

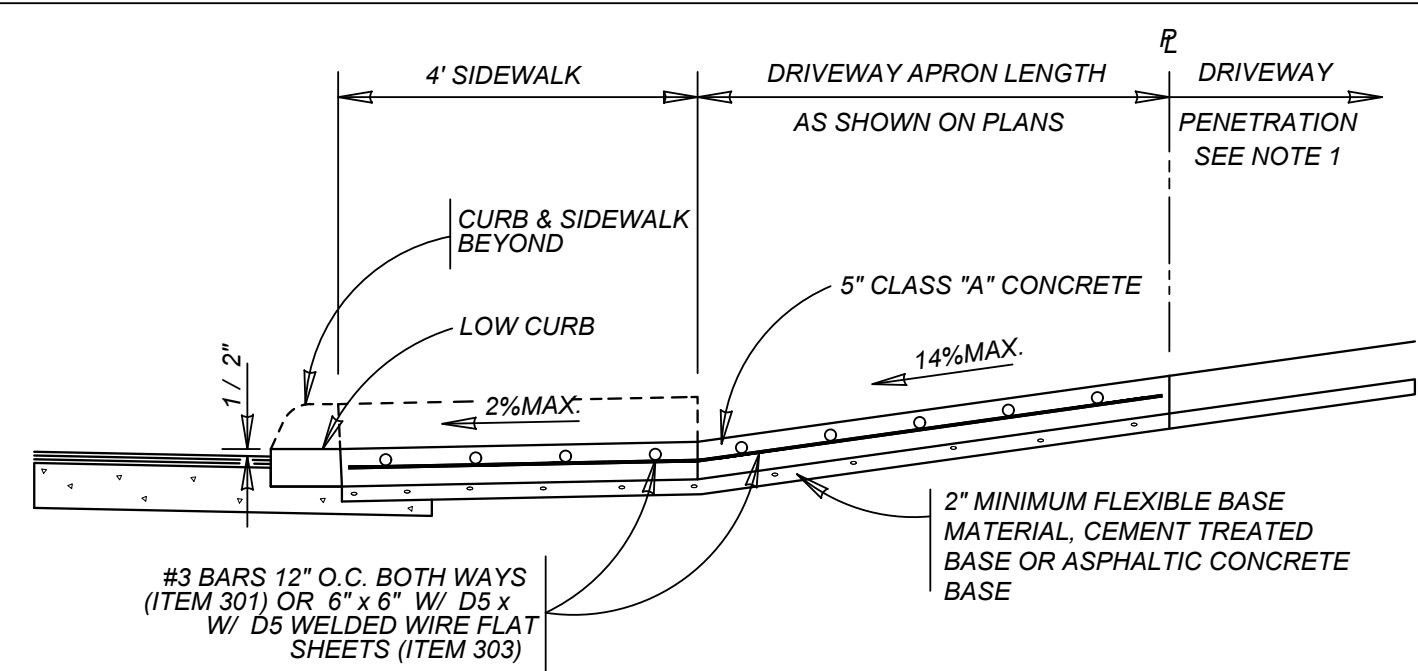
SHEET TITLE: **DRAIN "B" PLAN & PROFILE**

SHEET NUMBER: 5.2

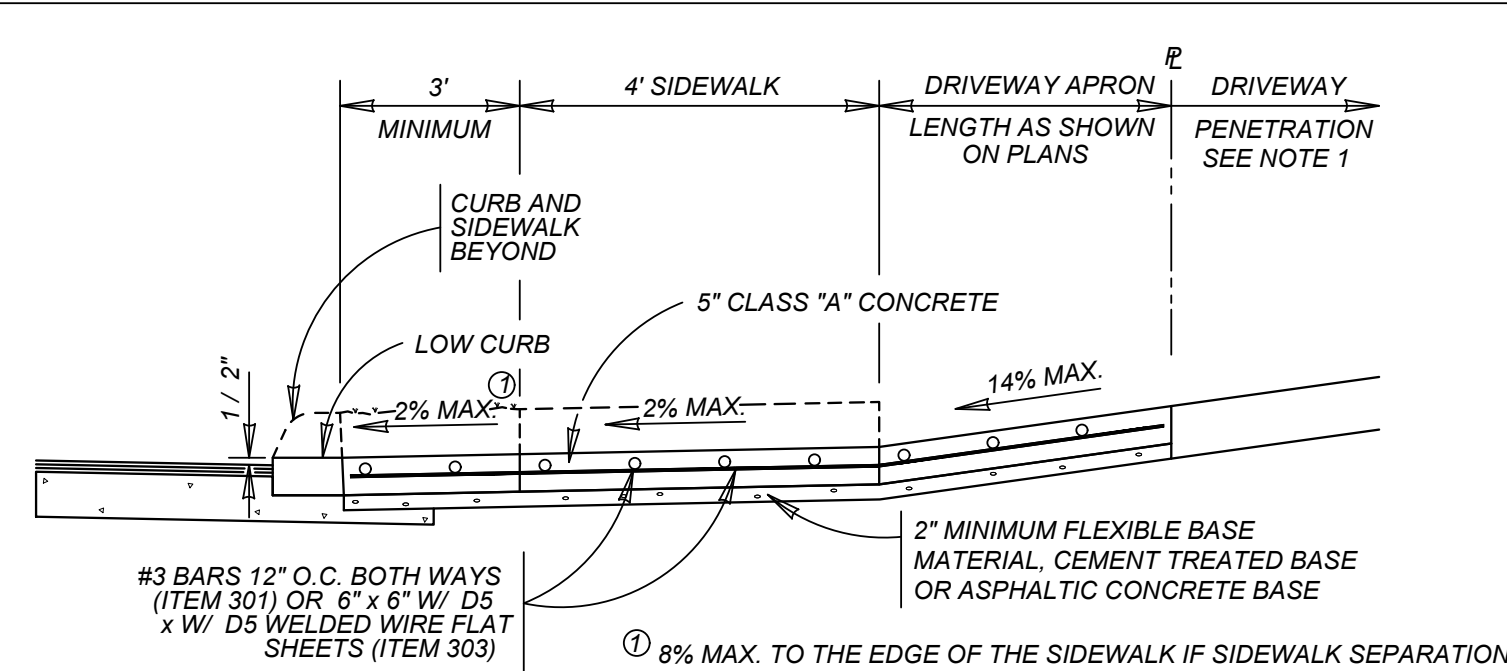


PROTECT YOURSELF
ALL STATES REQUIRE NOTIFICATION OF EXCAVATORS, DESIGNERS, OR ANY PERSON PREPARING TO DISTURB THE EARTH'S SURFACE ANYWHERE IN ANY STATE

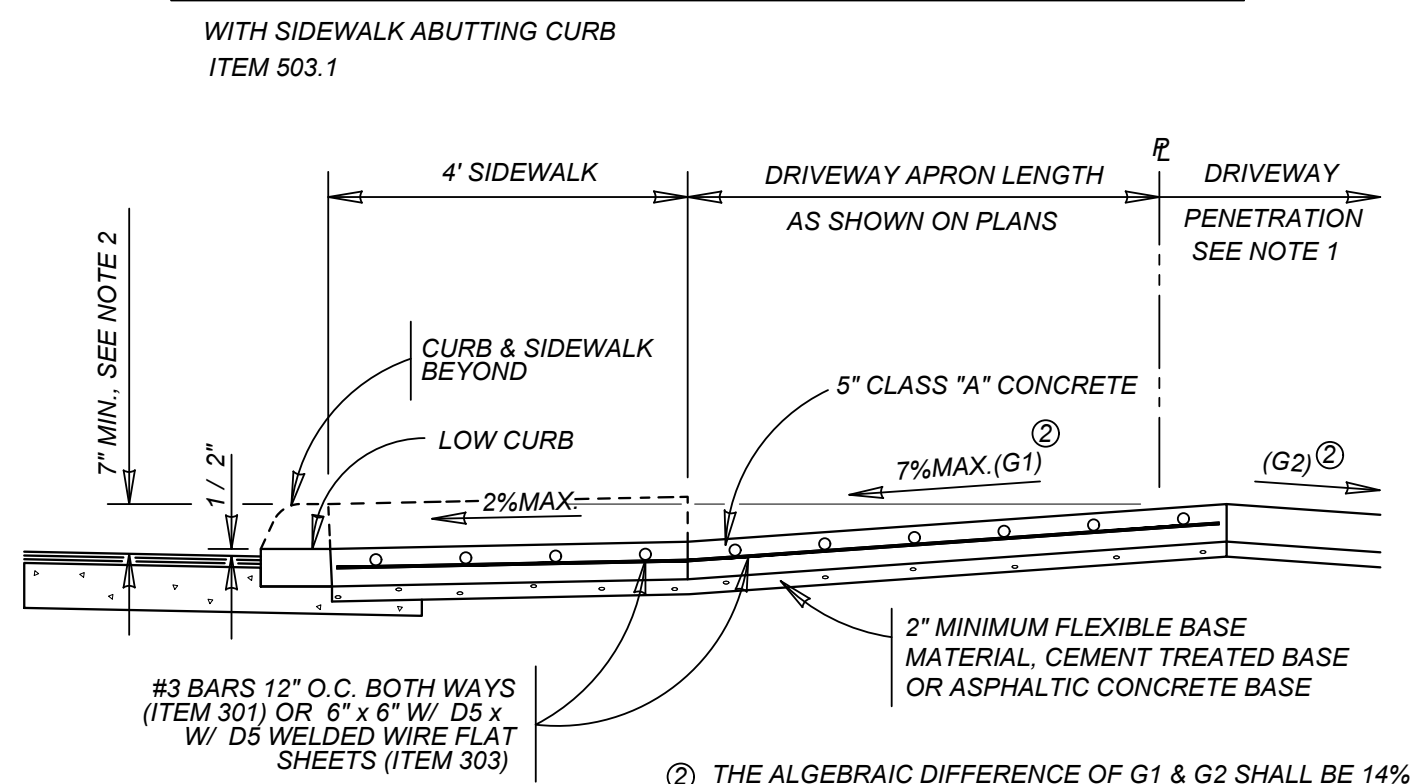
FOR STATE SPECIFIC DIRECT PHONE NUMBERS VISIT: WWW.CALL811.COM



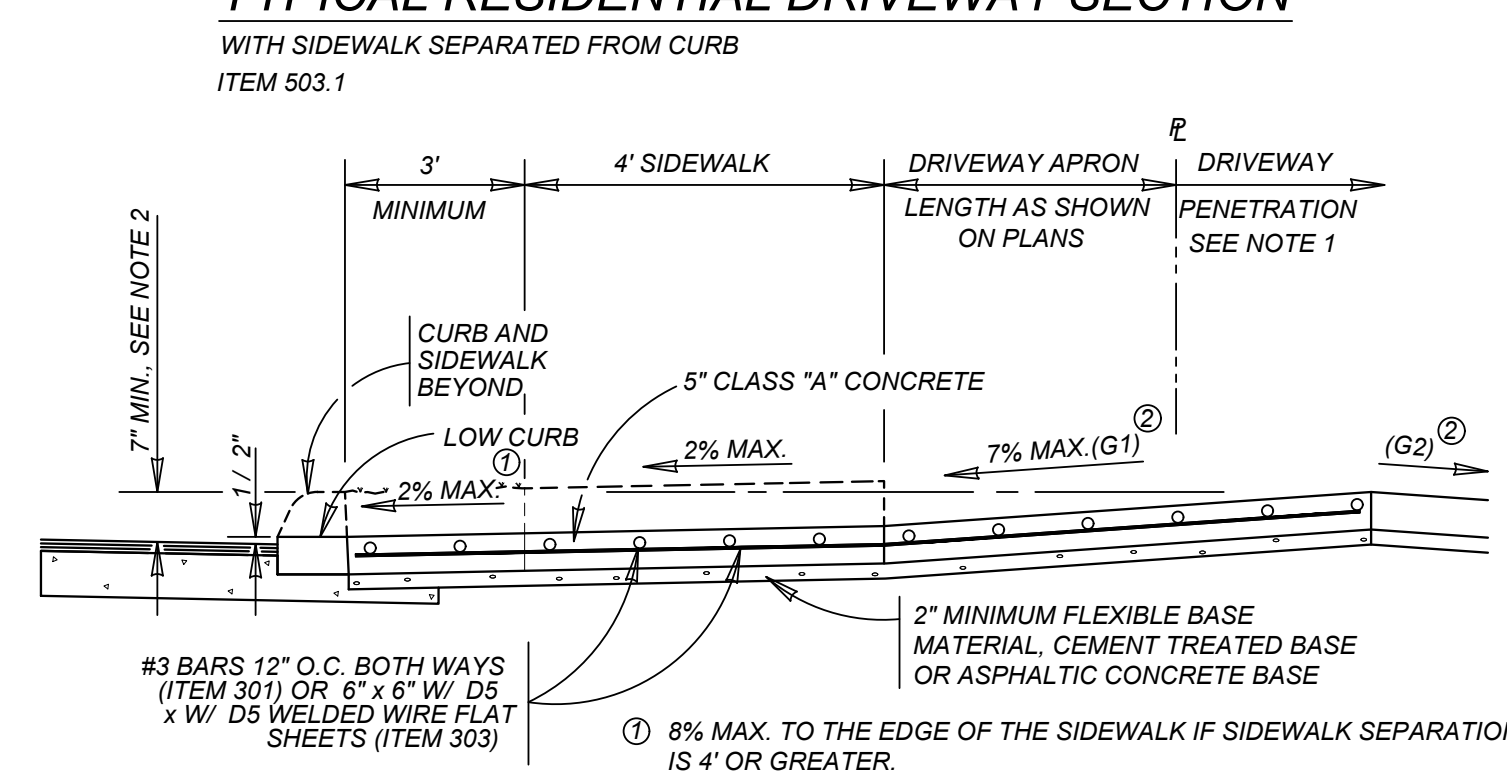
TYPICAL RESIDENTIAL DRIVEWAY SECTION
WITH SIDEWALK ABUTTING CURB
ITEM 503.1



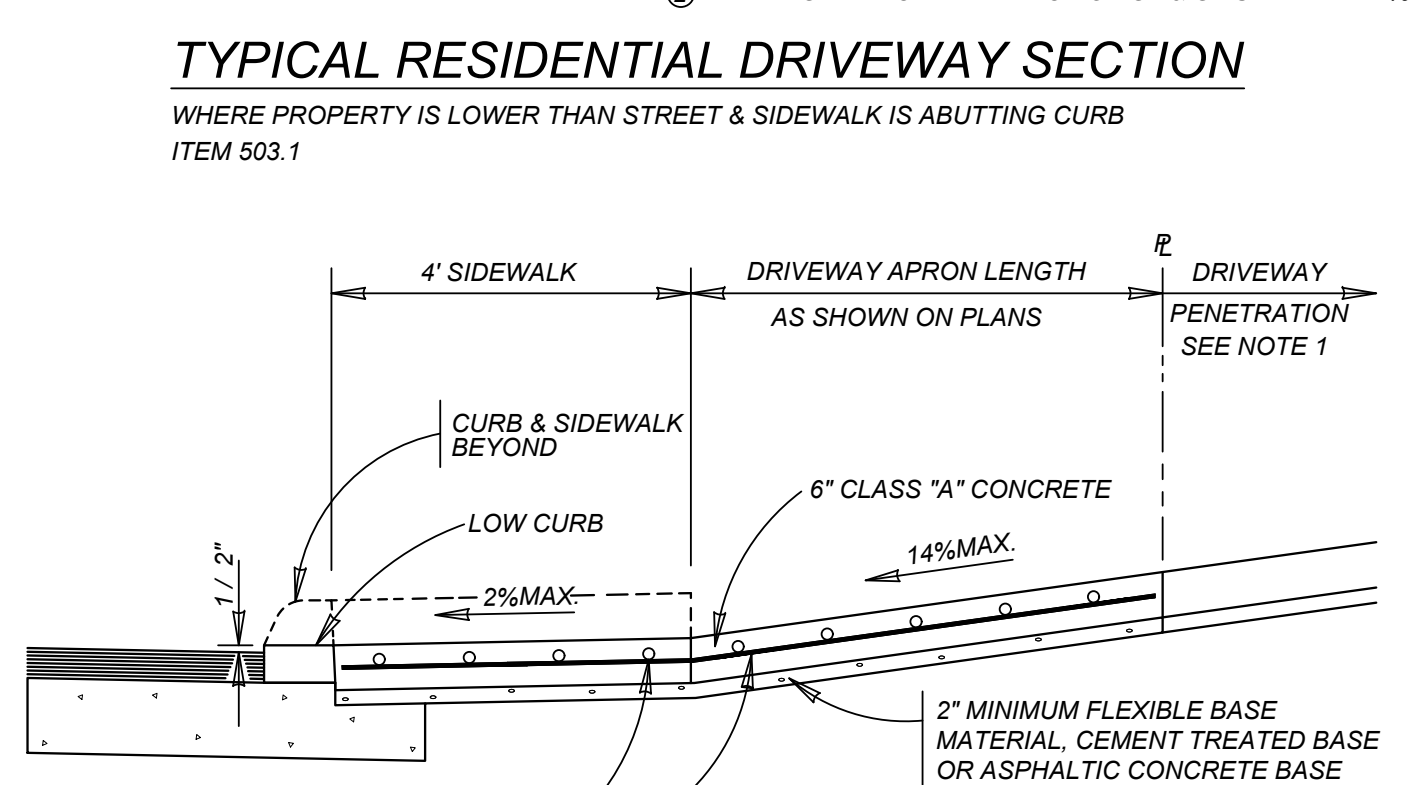
TYPICAL RESIDENTIAL DRIVEWAY SECTION
WITH SIDEWALK SEPARATED FROM CURB
ITEM 503.1



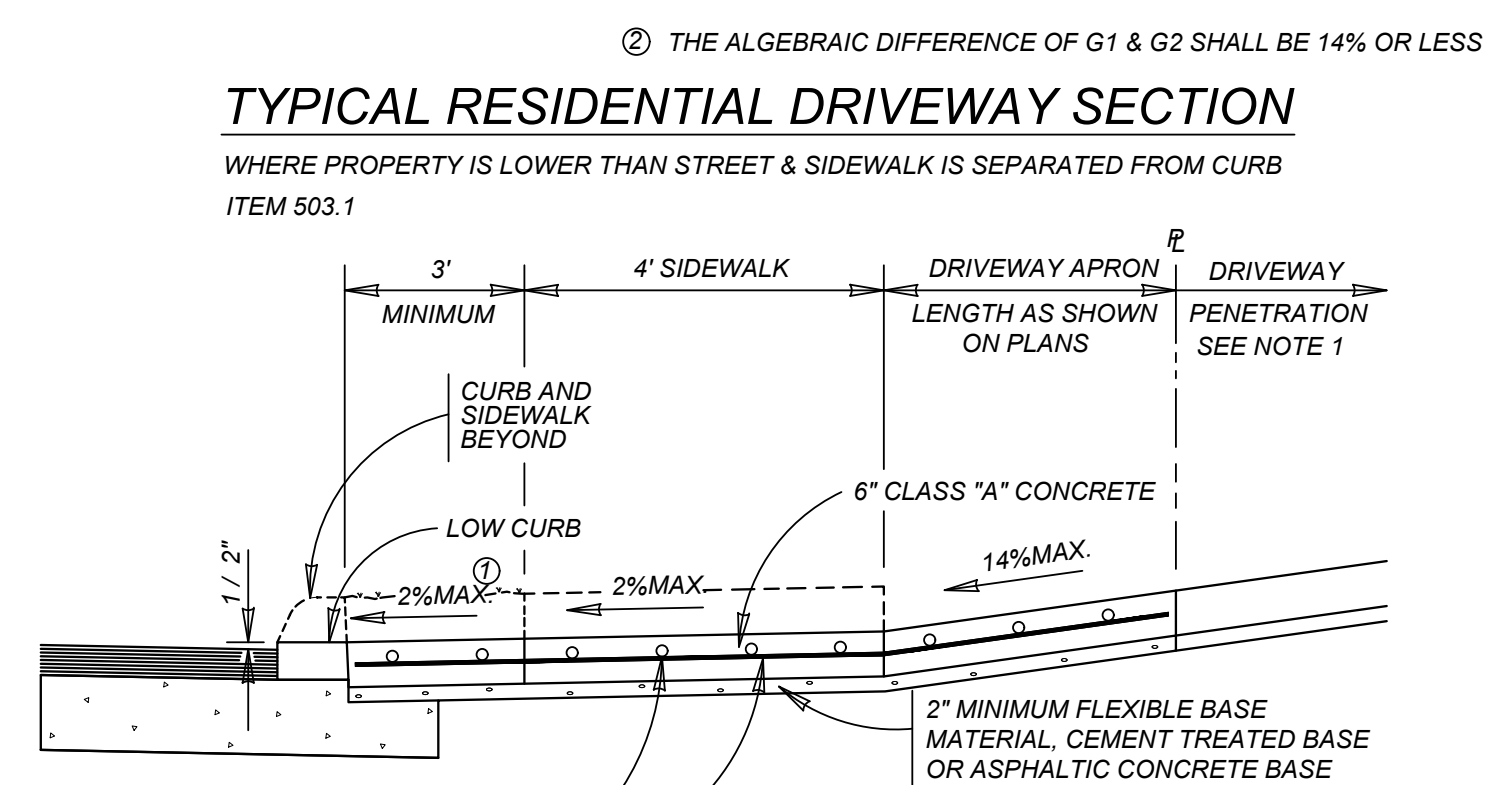
TYPICAL RESIDENTIAL DRIVEWAY SECTION
WHERE PROPERTY IS LOWER THAN STREET & SIDEWALK IS ABUTTING CURB
ITEM 503.1



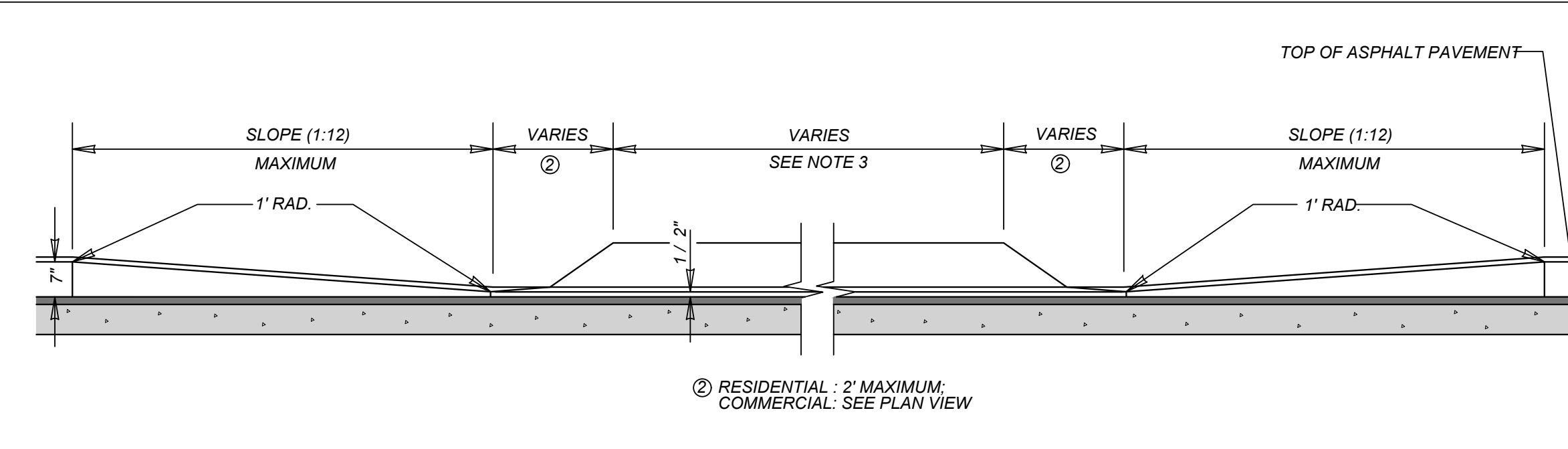
TYPICAL RESIDENTIAL DRIVEWAY SECTION
WHERE PROPERTY IS LOWER THAN STREET & SIDEWALK IS SEPARATED FROM CURB
ITEM 503.1



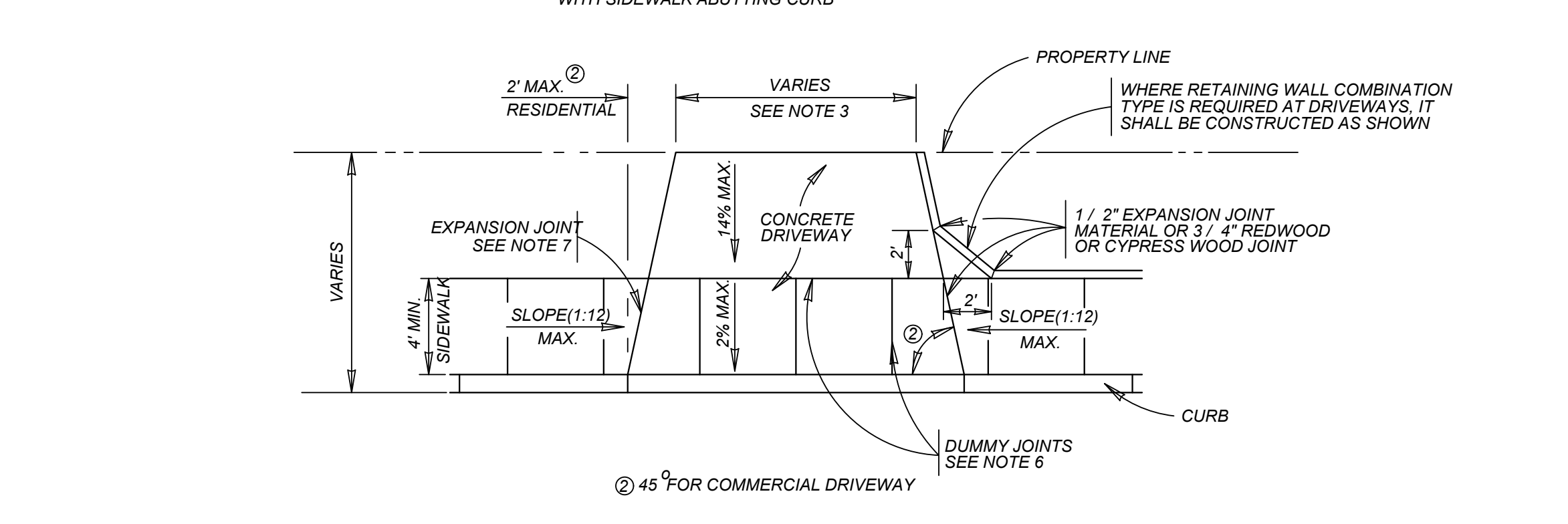
TYPICAL COMMERCIAL DRIVEWAY SECTION
WITH SIDEWALK ABUTTING CURB
ITEM 503.2



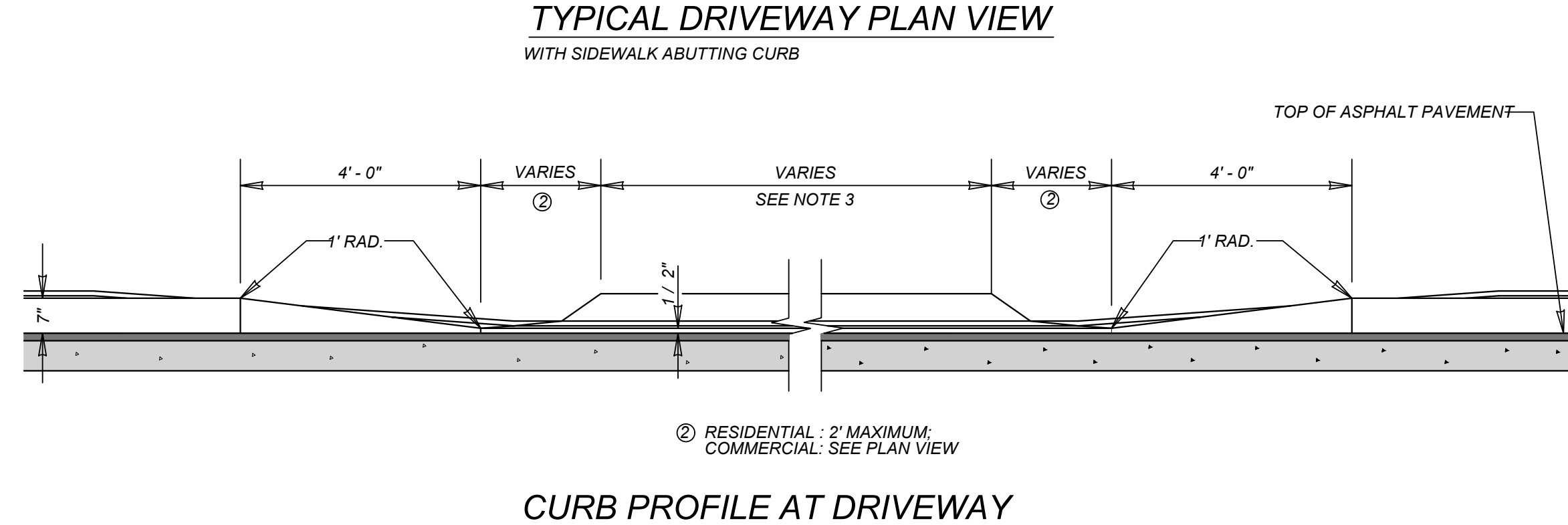
TYPICAL COMMERCIAL DRIVEWAY SECTION
WITH SIDEWALK SEPARATED FROM CURB
ITEM 503.2



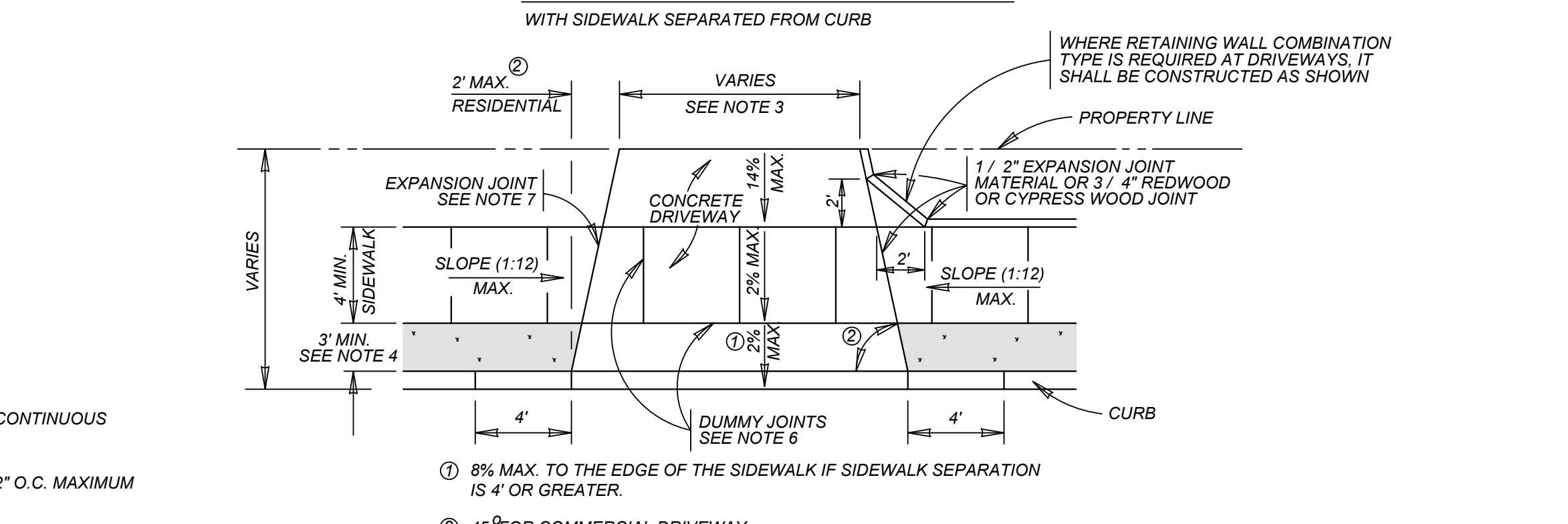
CURB PROFILE AT DRIVEWAY
WITH SIDEWALK ABUTTING CURB



TYPICAL DRIVEWAY PLAN VIEW
WITH SIDEWALK ABUTTING CURB



CURB PROFILE AT DRIVEWAY
WITH SIDEWALK SEPARATED FROM CURB



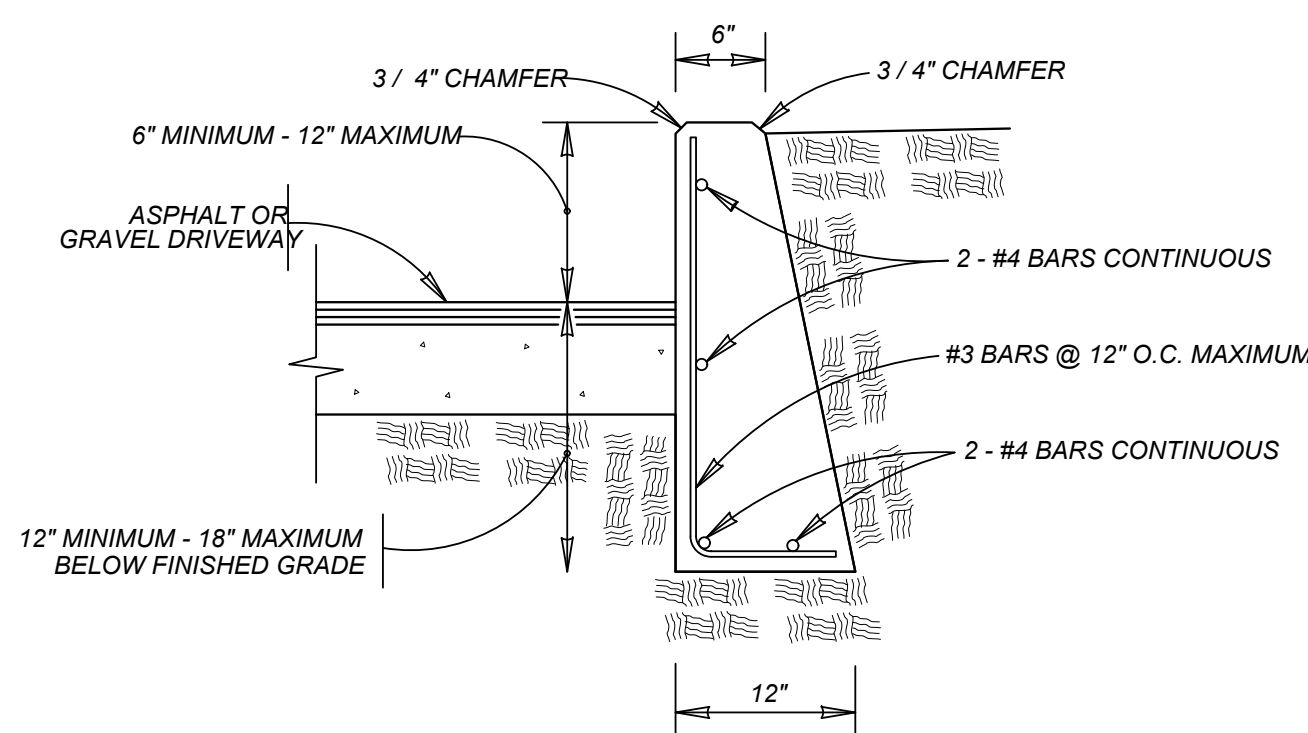
TYPICAL DRIVEWAY PLAN VIEW
WITH SIDEWALK SEPARATED FROM CURB

CONCRETE DRIVEWAY NOTES

- DRIVEWAY PENETRATION REFERS TO A PORTION OF THE DRIVEWAY THAT MAY BE NECESSARY TO RECONSTRUCT WITHIN PRIVATE PROPERTY TO COMPLY WITH A MAXIMUM DRIVEWAY SLOPE. THIS PORTION OF THE DRIVEWAY SHALL BE PAID FOR UNDER THE FOLLOWING ITEMS AS MAY APPLY:
A.) CONCRETE DRIVEWAY PAID FOR UNDER ITEM NO. 503.1 OR 503.2
B.) ASPHALTIC CONCRETE DRIVEWAY PAID FOR UNDER ITEM NO. 503.4 AND SHALL INCLUDE A MINIMUM OF 1" ASPHALT TYPE 'D' & 6" FLEXIBLE BASE
C.) GRAVEL DRIVEWAY PAID FOR UNDER ITEM NO. 503.5 AND SHALL INCLUDE A MINIMUM OF 6" FLEXIBLE BASE
- 7" MINIMUM HEIGHT WILL NOT NECESSARILY OCCUR AT THE PROPERTY LINE. IT MAY OCCUR WITHIN THE RIGHT OF WAY OR WITHIN THE DRIVEWAY PENETRATION ON PRIVATE PROPERTY.
- THE PROPOSED DRIVEWAY SHOULD MATCH THE EXISTING WIDTH AT THE PROPERTY LINE BUT UNLESS AUTHORIZED BY THE CITY TRAFFIC ENGINEER, THE WIDTH SHALL BE WITHIN THE FOLLOWING VALUES:

TYPE	MINIMUM	MAXIMUM
RESIDENTIAL	10'	20'
COMMERCIAL - ONE WAY	12'	20'
COMMERCIAL - TWO WAY	24'	30'

- FOR LOCAL TYPE 'A' STREETS, SIDEWALK SHALL HAVE A MINIMUM WIDTH OF 4' AND IF SEPARATED FROM THE CURB, THE SIDEWALK SHALL BE LOCATED A MINIMUM OF 3' FROM THE BACK OF CURB.
- FOR OTHER THAN LOCAL TYPE 'A' STREETS, THE SIDEWALK SHALL HAVE A MINIMUM WIDTH OF 4' AND SEPARATED A MINIMUM OF 3' FROM THE BACK OF CURB OR, AS AN OPTION, THE SIDEWALK SHALL HAVE A MINIMUM WIDTH OF 6' WHEN LOCATED AT THE BACK OF CURB.
- DUMMY JOINTS PARALLEL TO THE CURB SHALL BE PLACED WHERE THE SIDEWALK MEETS THE DRIVEWAY. DUMMY JOINTS PERPENDICULAR TO THE CURB, AND WITHIN THE BOUNDARIES OF THE PARALLEL DUMMY JOINTS, SHALL BE PLACED AT INTERVALS EQUAL TO THE WIDTH OF THE SIDEWALK.
- A MINIMUM OF TWO ROUND AND SMOOTH DOWEL BARS 3/8" IN DIAMETER AND 18" IN LENGTH SHALL BE SPACED 18" APART AT EACH EXPANSION JOINT.
- SIDEWALK RAMP LENGTHS SHALL BE OF SUFFICIENT LENGTH TO MAINTAIN 8.33% (1:12) MAXIMUM SLOPE. WHERE SIDEWALKS CROSS DRIVEWAYS, SIDEWALK CROSS SLOPE SHALL NOT EXCEED 2%.
- SIDEWALK RAMP SURFACE SHALL BE BRUSH FINISHED.



- NOTE:
- COST OF REINFORCEMENT TO BE INCLUDED IN UNIT COST OF ITEM 307.1.
 - CONCRETE RETAINING WALL COMBINATION TYPE SHALL BE USED FOR CONCRETE DRIVEWAYS.

DRIVEWAY - CONCRETE RETAINING WALL

ON COMPACTED SUBGRADE
ITEM 307.1

MAY 2009

CITY OF SAN ANTONIO
CAPITAL IMPROVEMENTS MANAGEMENT SERVICES DEPARTMENT

CONCRETE DRIVEWAY STANDARDS

% SUBMITTAL	PROJECT NO.:	DATE:
DRWN. BY: V. VASQUEZ	DSGN. BY:	CHKD. BY: R.S. HOSSEINI, P.E.
		SHEET NO. OF



JEFFREY W. MARTIN
TEXAS LICENSED PROFESSIONAL ENGINEER
LICENSE NUMBER: 139094
COLLIERS ENGINEERING & DESIGN, INC.
TPE Firm#: F-14909 - TPLS Firm#: 10194550

TMM SOMERSET, UNIT 4
PLAT# 25-11800496

FOR
KB HOME
LONESTAR, INC.

CITY OF SAN ANTONIO
BEXAR COUNTY
TEXAS



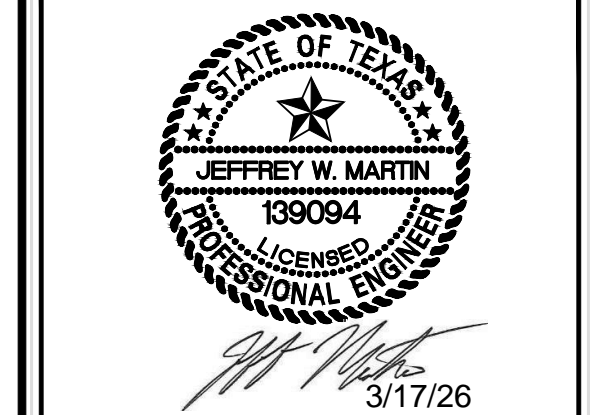
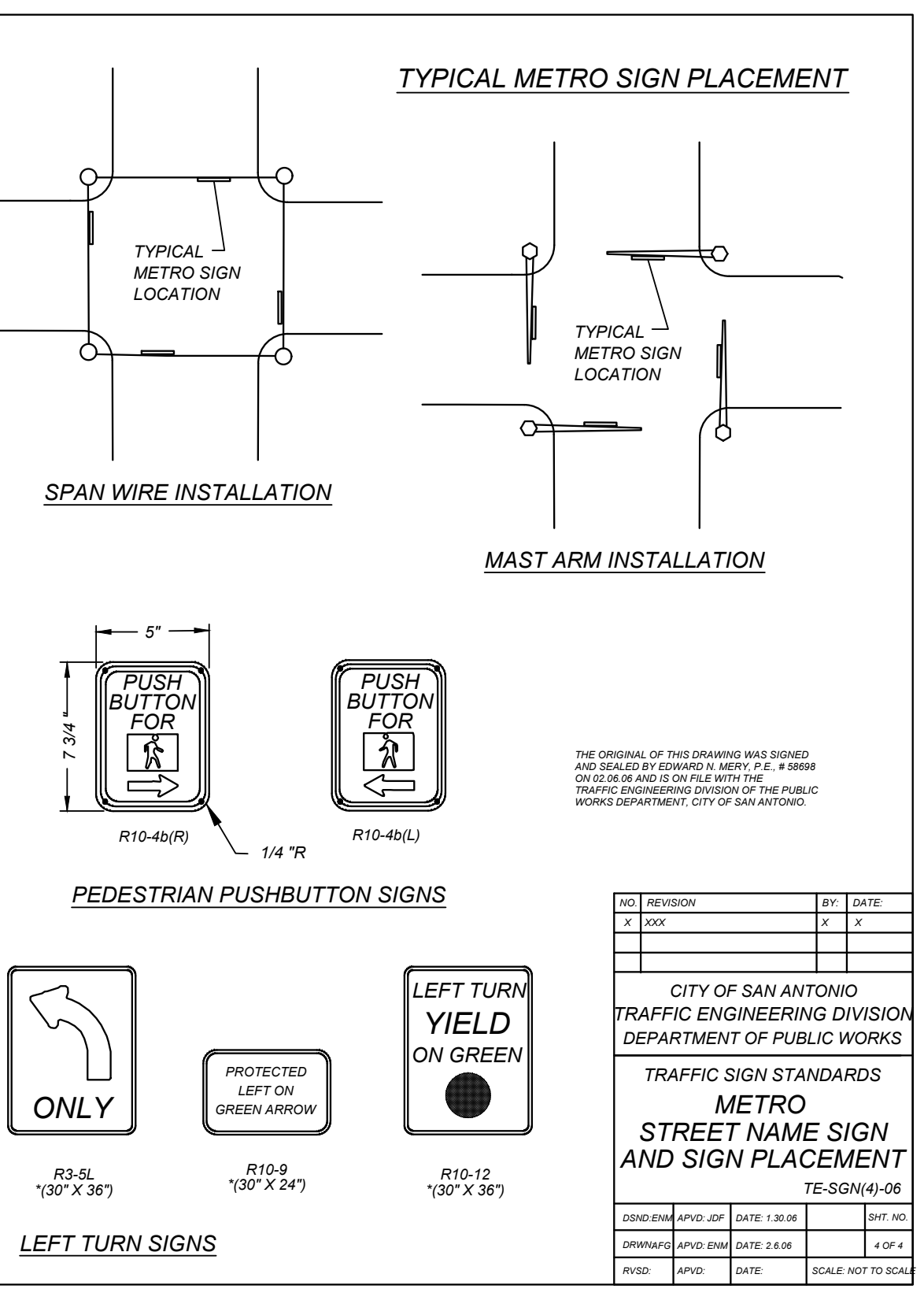
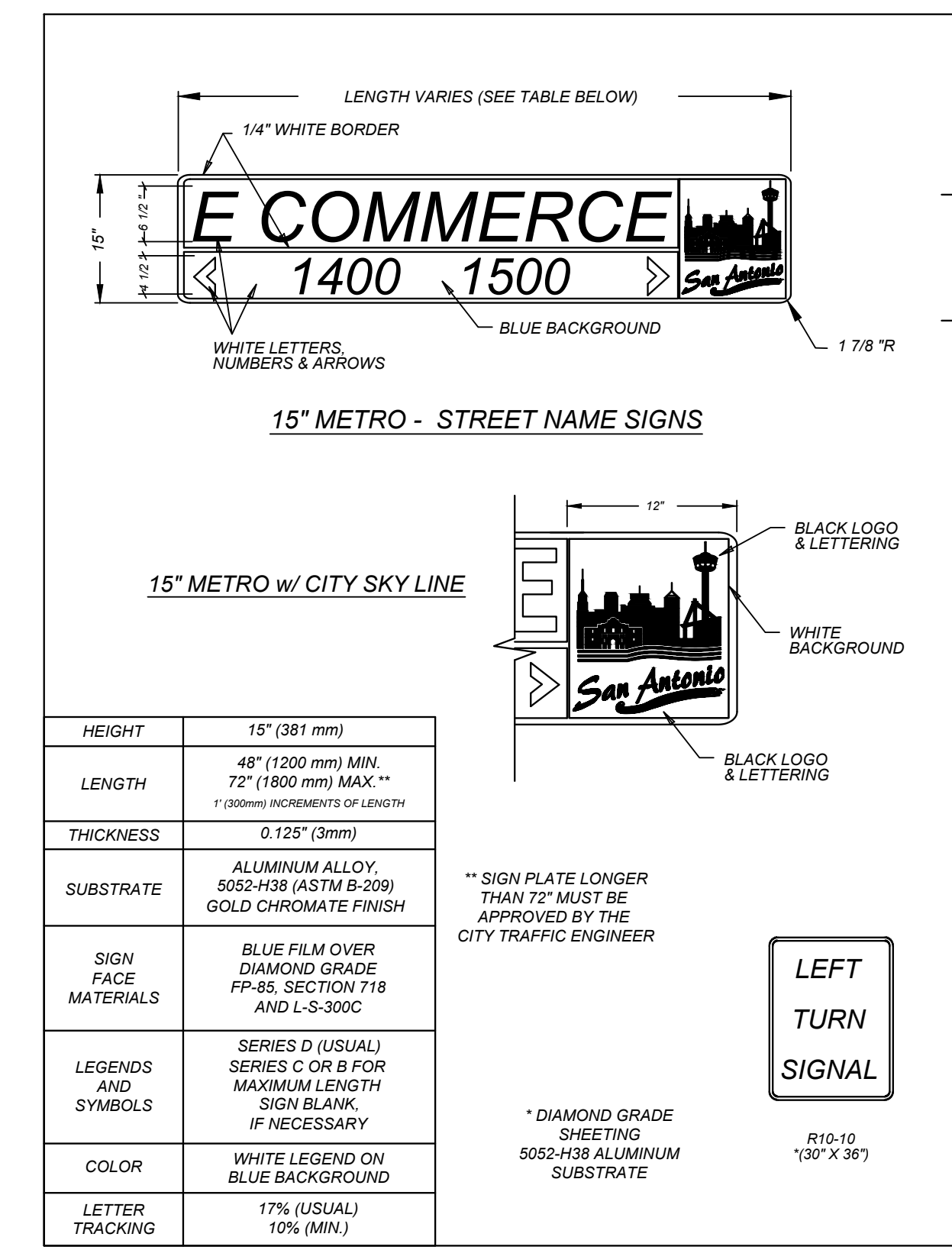
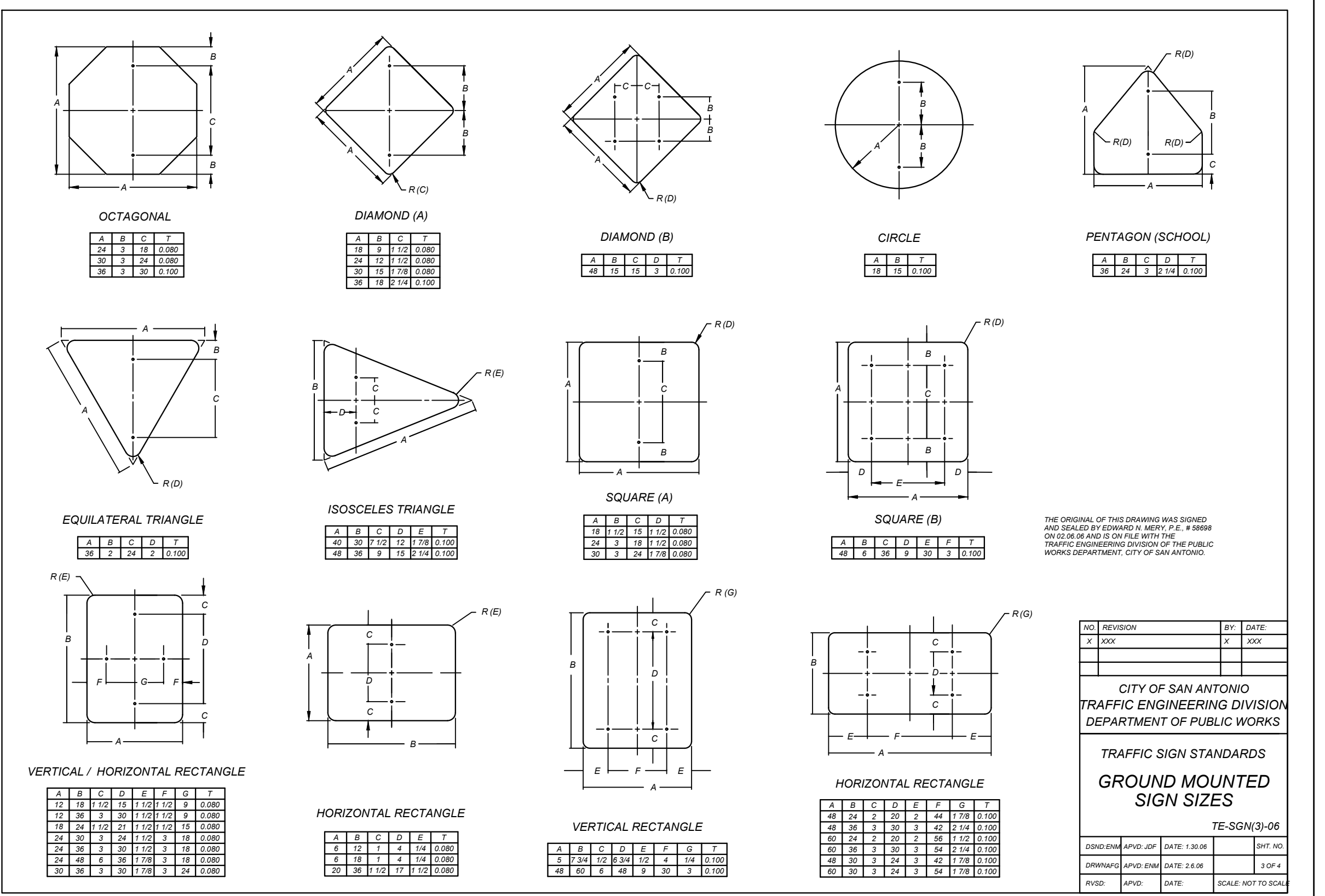
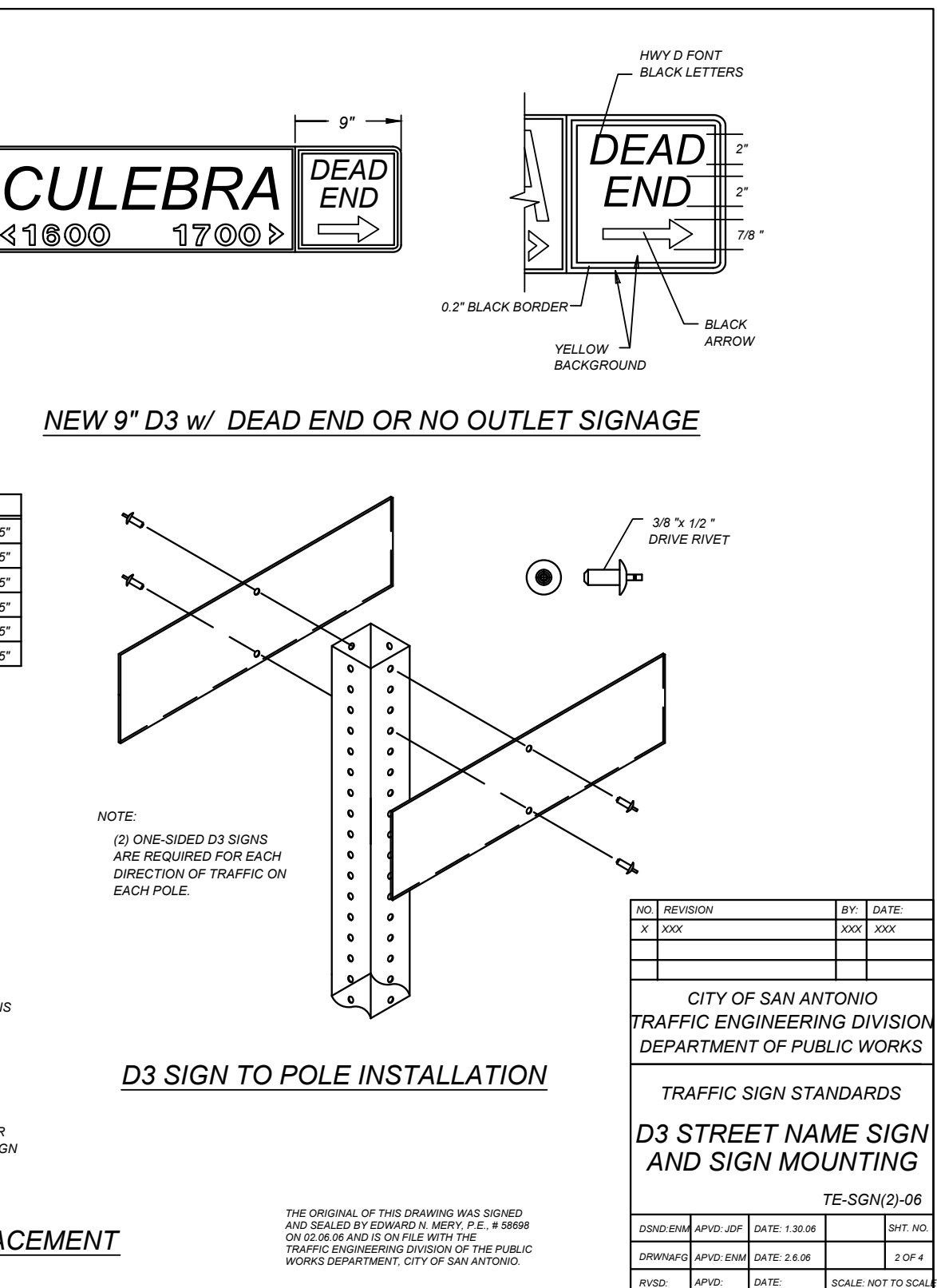
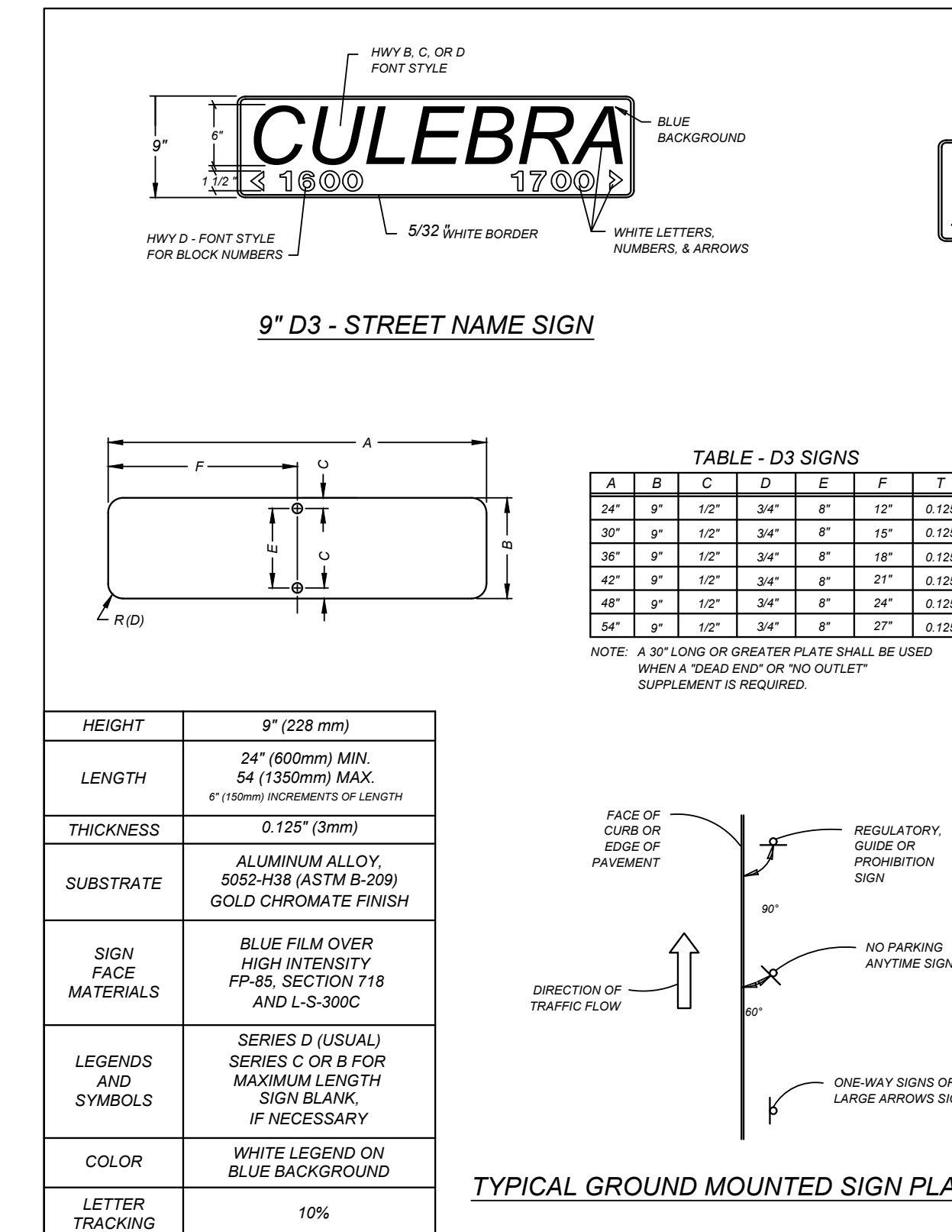
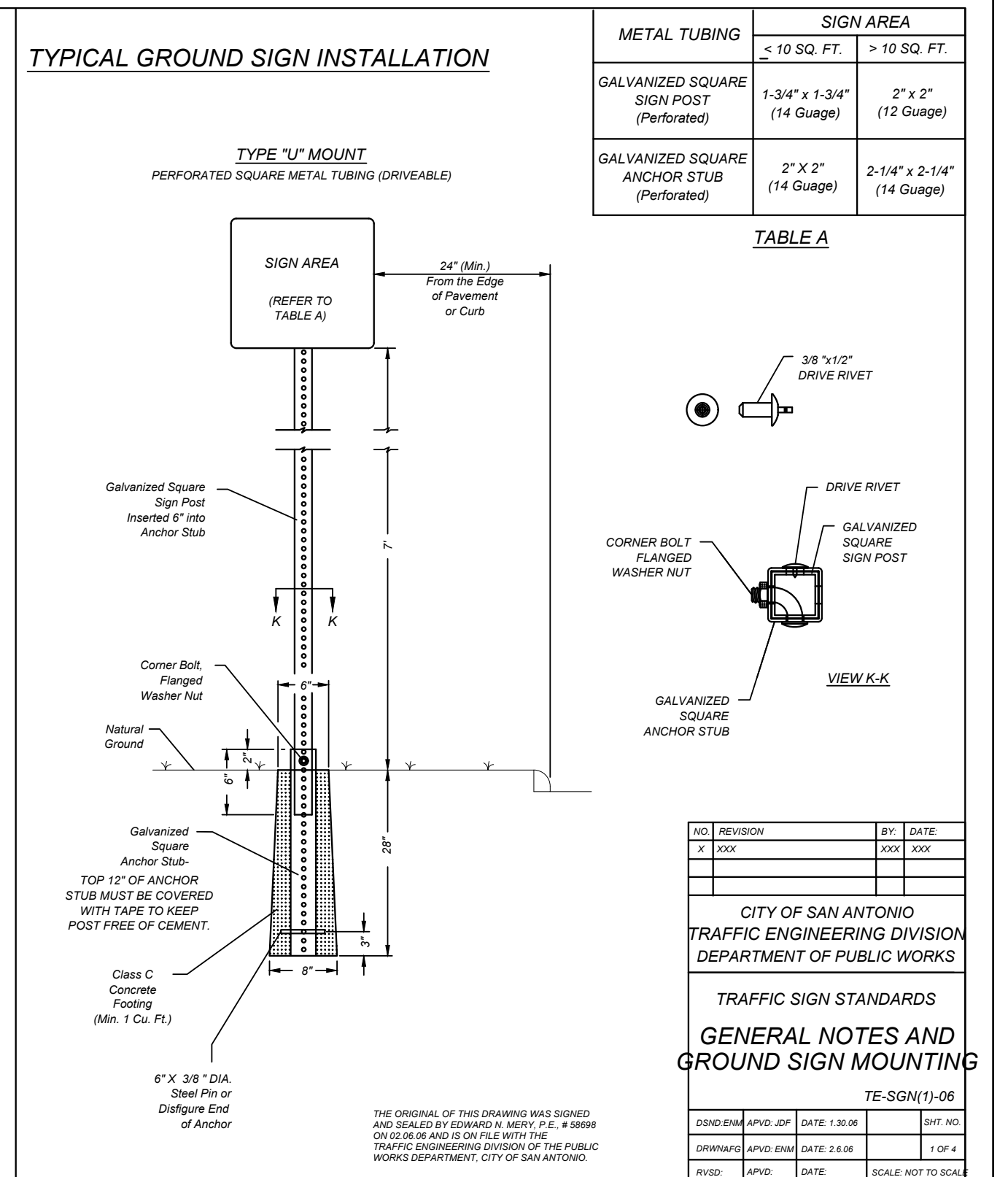
SCALE:	DATE:	DRAWN BY:	CHECKED BY:
AS SHOWN	10/20/25	JA	CG
PROJECT NUMBER:	418-14-08	DRAWING NAME:	STD4181408

SHEET TITLE:
CONCRETE DRIVEWAY STANDARDS

SHEET NUMBER:
6.5

GENERAL NOTES

- 1) THE EXISTING SIGNS LOCATED ON THE JOBSITE ARE THE PROPERTY OF THE CITY OF SAN ANTONIO. THROUGHOUT THE PERIOD OF THE CONTRACT, THE CONTRACTOR SHALL PROTECT THESE SIGNS SUCH THAT THEY ARE NOT DAMAGED IN THE COURSE OF CONSTRUCTION ACTIVITY. SUCH PROTECTION SHALL INCLUDE THE PERIOD AFTER SIGNS ARE REMOVED FROM INSTALLATION AND STORED BY THE CONTRACTOR OR DELIVERED TO TRAFFIC OPERATIONS. THE ASSISTANT TRAFFIC SUPERINTENDENT (207-7765) MUST BE NOTIFIED 48 HOURS IN ADVANCE PRIOR TO DELIVERY.
- 2) AFTER SIGNS ARE REMOVED FROM INSTALLATION AND ARE BEING STORED BY THE CONTRACTOR, THE CONTRACTOR SHALL CONTACT THE TRAFFIC OPERATIONS SECTION OF THE PUBLIC WORKS DEPARTMENT (207-7765) AND ARRANGE FOR A CONVENIENT TIME TO DELIVER CITY SIGNS AND POLES.
- 3) PRIOR TO THE START OF CONSTRUCTION, ALL EXISTING SIGNS WITHIN THE AREA OF CONSTRUCTION WILL BE INVENTORIED AND DOCUMENTED JOINTLY BY THE TRAFFIC ENGINEERING (207-7720) CONSTRUCTION INSPECTION AND THE CONTRACTOR. THIS DOCUMENT WILL BE JOINTLY SIGNED BY BOTH PARTIES REFLECTING THE SIGN TYPE, SIGN SIZE, SIGN CONDITION, SIGN LOCATION, REFLECTIVITY ADEQUACY, ETC. THE CONTRACTOR IS HELD ACCOUNTABLE FOR THESE SIGNS THROUGHOUT THE PROJECT AND AT THE PROJECTS COMPLETION.
- 4) ALL GROUND MOUNTED SHALL USE HIGH INTENSITY REFLECTIVE SHEETING.
- 5) ALL OVERHEAD SIGNS SHALL USE DIAMOND GRADE REFLECTIVE SHEETING.
- 6) ALL BLANKS TO BE ALUMINUM ALLOY NO. 5052-H38.
- 7) "T" DENOTES THICKNESS OF SIGN BLANKS.
- 8) ALL HOLES SHALL BE 3/8" DIAMETER DRILLED OR PUNCHED AS SHOWN ON EACH BLANK DETAIL AND SHALL BE FREE OF BURRS AND/OR ROUGH EDGES.
- 9) SIGN BLANK CORNERS TO BE ROUNDED AS SHOWN ON EACH DETAIL.
- 10) ALL SIGN BLANK TO BE ETCHED, DEGREASED, AND HAVE AN ALODINE FINISH PRIOR TO APPLICATION OF LEGENDS.
- 11) ALL DETAILS ARE NOT TO SCALE.
- 12) ALL DIMENSIONS ARE IN INCHES.
- 13) ALL SIGNS SHALL BE MANUFACTURED AND INSTALLED IN CONFORMANCE TO THE TEXAS MANUAL ON UNIFORM TRAFFIC CONTROL DEVICES AND STANDARD HIGHWAY SIGNS (FHWA) LATEST EDITION.
- 14) REINSTALLATION OF PREVIOUSLY EXISTING SIGNS, WHERE REQUIRED BY THE CITY TRAFFIC ENGINEER, SHALL BE AT THE CONTRACTOR'S EXPENSE.



JEFFREY W. MARTIN
 TEXAS LICENSED PROFESSIONAL ENGINEER
 LICENSE NUMBER: 139094
 COLLIER ENGINEERING & DESIGN, INC.
 TBPE Firm#: F-14909 - TBPS Firm#: 10194550

TMM SOMERSET, UNIT 4
 PLAT# 25-11800496
 FOR
KB HOME LONESTAR, INC.

CITY OF SAN ANTONIO
 BEXAR COUNTY
 TEXAS

Colliers SAN ANTONIO (KFW)
 3421 Paeonian Parkway
 San Antonio, TX 78231
 Phone: 210.979.8444
 COLLIER ENGINEERING & DESIGN, INC.
 TBPE Firm#: F-14909
 TBPS Firm#: 10194550

SCALE: AS SHOWN DATE: 10/20/25 DRAWN BY: JA CHECKED BY: CG
 PROJECT NUMBER: 418-14-08 DRAWING NUMBER: TSD14181408

SHEET TITLE: **TRAFFIC SIGNAGE DETAILS**

SHEET NUMBER: 6.7

INSTALLATION:

1. ALL OPERATORS SHALL SUBMIT A NOTICE OF INTENT (NOI) AT LEAST 48 HOURS IN ADVANCE AND ALL BEST MANAGEMENT PRACTICES (BMP'S) SHALL BE IN PLACE PRIOR TO STARTING CONSTRUCTION ACTIVITIES.
2. CONTRACTOR TO ENSURE THAT STRUCTURAL BMP'S ARE INSTALLED WITHIN THE LIMITS OF THE SITE BOUNDARY.
3. CONTRACTOR MAY INSTALL THE BEST MANAGEMENT PRACTICES IN PHASES THAT COINCIDE WITH THE DISTURBANCE OF UP GRADIENT AREAS. THIS PHASING SHOULD BE NOTED WITHIN THE MODIFICATIONS SECTION WITH THE SIGNATURE AND DATE OF THE RESPONSIBLE PARTY.
4. CONTRACTOR TO VERIFY SUFFICIENT VEGETATION IN AREAS DENOTED AS VEGETATED FILTER STRIP. IF INSUFFICIENT VEGETATION EXISTS, CONTRACTOR SHALL IMPLEMENT A DIFFERENT BEST MANAGEMENT PRACTICE AND WILL SHOW IT ON THIS PLAN WITH NOTATION IN THE MODIFICATIONS SECTION WITH THE SIGNATURE AND DATE OF THE RESPONSIBLE PARTY.

MAINTENANCE AND INSPECTION:

1. CONTRACTOR SHOULD LIMIT CONSTRUCTION ACTIVITIES TO ONLY THOSE AREAS SHOWN TO BE DISTURBED ON THIS PLAN. IF ADDITIONAL VEGETATED AREAS ARE DISTURBED, THEY SHOULD BE PROTECTED WITH APPROPRIATE BEST MANAGEMENT PRACTICES UNTIL THE AREAS HAVE BEEN STABILIZED AS PER THE SPECIFICATIONS OF THE SWPPP. THE AREAS OF THIS ADDITIONAL SOIL DISTURBANCE AND THE MEASURES USED SHOULD BE SHOWN ON THE SITE PLAN AND NOTED WITHIN THE MODIFICATIONS SECTION WITH THE SIGNATURE AND DATE OF THE RESPONSIBLE PARTY.
2. CONTRACTOR IS RESPONSIBLE FOR MAINTENANCE AND INSPECTION OF BMP'S AS PER THE SPECIFICATIONS OF THE SWPPP. THE CONTRACTOR MAY MODIFY THE CONTROLS AS NECESSARY TO PREVENT SEDIMENT RUNOFF. THESE MODIFICATIONS SHOULD BE SHOWN AND THE SITE PLAN AND NOTED WITHIN THE MODIFICATIONS SECTION WITH THE SIGNATURE AND DATE OF THE RESPONSIBLE PARTY.
3. LOCATION OF CONSTRUCTION ENTRANCE/EXIT, CONCRETE WASHOUT PIT, AND EQUIPMENT AND STORAGE ARE TO BE FIELD DETERMINED. LOCATIONS SHALL BE UPDATED ON THIS PLAN.

PROJECT COMPLETION:

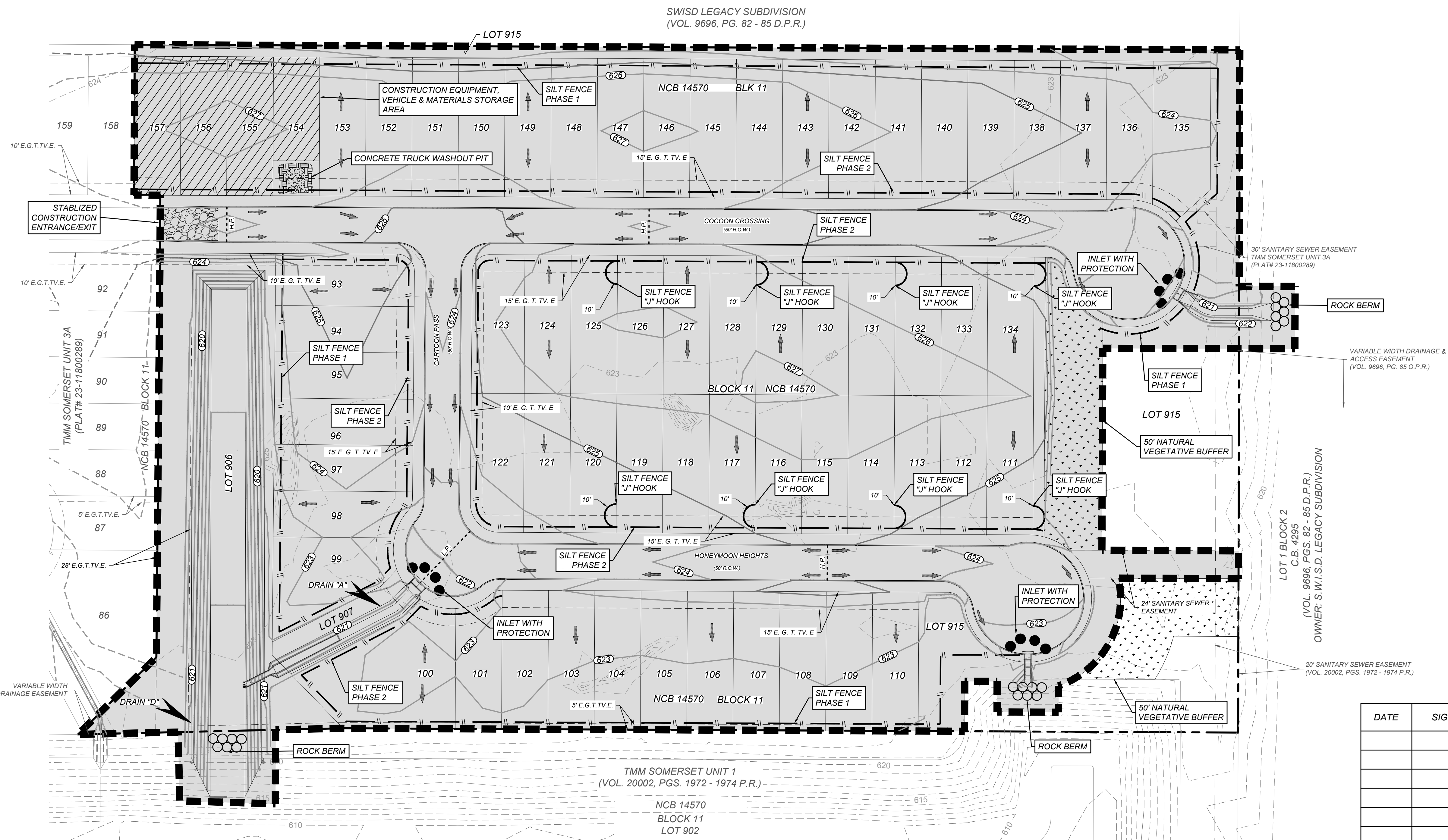
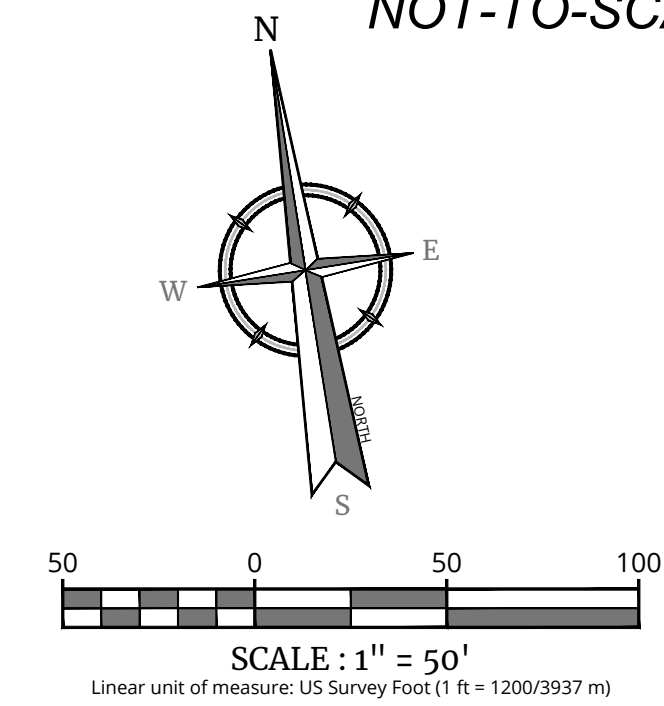
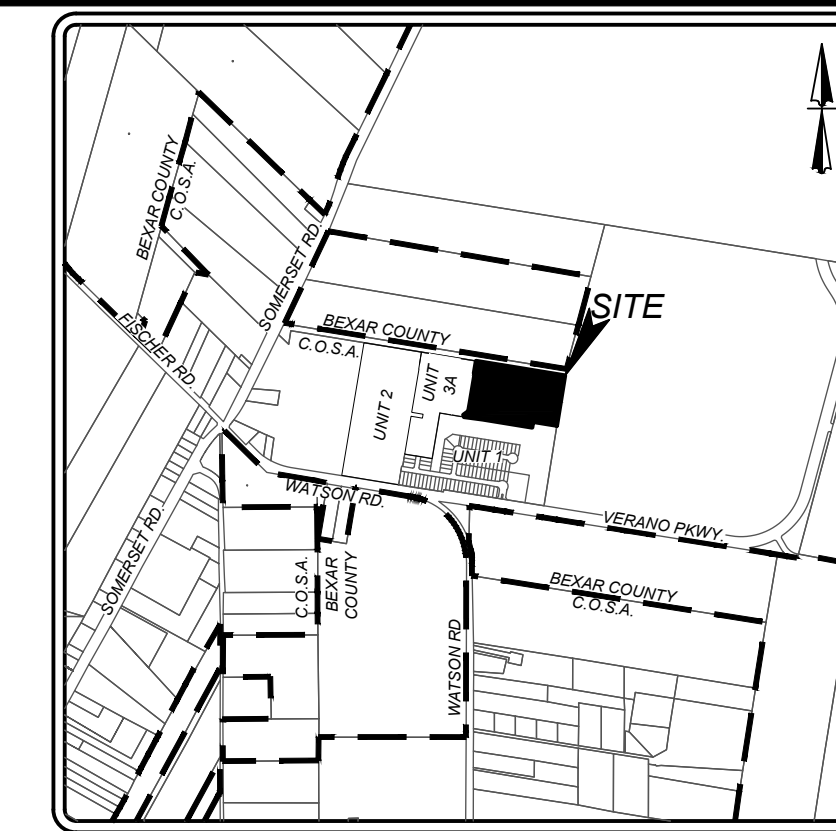
1. ALL DISTURBED AREAS ARE NOT COVERED BY IMPERVIOUS COVER ARE TO BE STABILIZED PER THE SWPPP AND PROJECT SPECIFICATIONS PRIOR TO REMOVAL OF ANY BMP'S AND/OR PRIOR TO FILING A NOTICE OF TERMINATION (NOT).
2. BEST MANAGEMENT PRACTICES MAY BE REMOVED IN PHASES IF ALL UPGRADIENT AREAS HAVE BEEN STABILIZED PER SWPPP AND PROJECT SPECIFICATIONS. THIS PHASING SHOULD BE NOTED WITHIN THE MODIFICATIONS SECTION WITH THE SIGNATURE AND DATE OF THE RESPONSIBLE PARTY.
3. CONTRACTOR TO ENSURE THEY HAVE MET ALL REQUIREMENTS OF THE SWPPP BEFORE FILING A NOTICE OF TERMINATION (NOT).

GENERAL:

1. THIS EXHIBIT IS TO BE USED FOR THE PURPOSES OF STORMWATER POLLUTION PREVENTION ONLY. ALL OTHER CIVIL ENGINEERING INFORMATION SHOULD BE OBTAINED FROM THE APPROPRIATE CONSTRUCTION DOCUMENTS.
2. THE PURPOSE OF THE SIGNATURE AND SEAL OF THE ENGINEER ON THIS DOCUMENT IS TO DEMONSTRATE COMPLIANCE WITH THE TPDES STORMWATER POLLUTION PREVENTION PLAN REGULATIONS ONLY.
3. ALL OWNERS/OPERATORS ARE RESPONSIBLE FOR FAMILIARIZING THEMSELVES WITH THE STORMWATER POLLUTION PREVENTION PLAN AND COMPLYING WITH THE REGULATIONS CONTAINED WITHIN IT.

COORDINATION NOTE:

1. CONTACT TIME WARNER TO COORDINATE CABLE TV SERVICE. (210) 244-0500
2. CONDUIT FOR ELECTRICAL SERVICE. CONFIRM REQUIREMENTS AND COORDINATE WITH CPS FOR INSPECTION. (210) 353-2246.
3. CONTACT AT&T TO COORDINATE TELEPHONE SERVICE. 1-800-449-7928.
4. CONTRACTOR TO COORDINATE WITH CPS PRIOR TO CONSTRUCTION TO PLAN ELECTRIC SERVICE.
5. CONTRACTOR TO COORDINATE WITH SAWS TO PLAN WATER AND SANITARY SEWER SERVICES (210) 704-7297
6. CONTRACTOR SHALL CONTACT 1-800-DIG-TEST A MINIMUM OF 48 HOURS PRIOR TO THE START OF CONSTRUCTION.



LEGEND

- LIMITS OF CONSTRUCTION
- - - - EXISTING CONTOURS
- PROPOSED CONTOURS
- FLOW ARROW
- STABILIZED CONSTRUCTION ENTRANCE/EXIT
- CONSTRUCTION EQUIPMENT, VEHICLE & MATERIALS STORAGE AREA
- CONCRETE TRUCK WASHOUT PIT
- DISTURBED AREA
- ROCK BERM
- SILT FENCE PHASE 1 (SILT FENCE PHASE 2 ALONG THE FRONT OF LOTS TO BE INSTALLED AFTER PAVING)
- NATURAL VEGETATIVE BUFFER
- INLET WITH PROTECTION (GRAVEL FILTERS BAGS)

DATE	SIGNATURE	DESCRIPTION

Colliers
Engineering & Design
www.colliersengineering.com

Formerly known as **KFW**
811 PROTECT YOURSELF
ALL STATES REQUIRE NOTIFICATION OF EXCAVATORS, DESIGNERS, OR ANY PERSON PREPARING TO DISTURB THE EARTH'S SURFACE ANYWHERE IN ANY STATE.
FOR STATE SPECIFIC DIRECT PHONE NUMBERS VISIT: WWW.CALL811.COM

REV.	DATE	DRAWN BY	DESCRIPTION

JEFFREY W. MARTIN
TEXAS LICENSED PROFESSIONAL ENGINEER
LICENSE NUMBER: 139094
COLLIERS ENGINEERING & DESIGN, INC.
TBPES Firm#: F-14009 - TBPES Firm#: 10194550
3/17/26

TMM SOMERSET, UNIT 4
PLAT# 25-11800496
FOR
KB HOME LONESTAR, INC.
CITY OF SAN ANTONIO
BEXAR COUNTY
TEXAS

Colliers Engineering & Design
SAN ANTONIO (KFW)
3421 Paesanos Parkway
San Antonio, TX 78231
Phone: 210.979.8444
TBPES Firm#: F-14009
TBPES Firm#: 10194550

SCALE: AS SHOWN DATE: 10/20/25 DRAWN BY: JA CHECKED BY: CG
PROJECT NUMBER: 418-14-08 DRAWING NUMBER: SW3P4181408

SHEET TITLE: **STORM WATER POLLUTION PREVENTION PLAN**

SHEET NUMBER: 9.1

