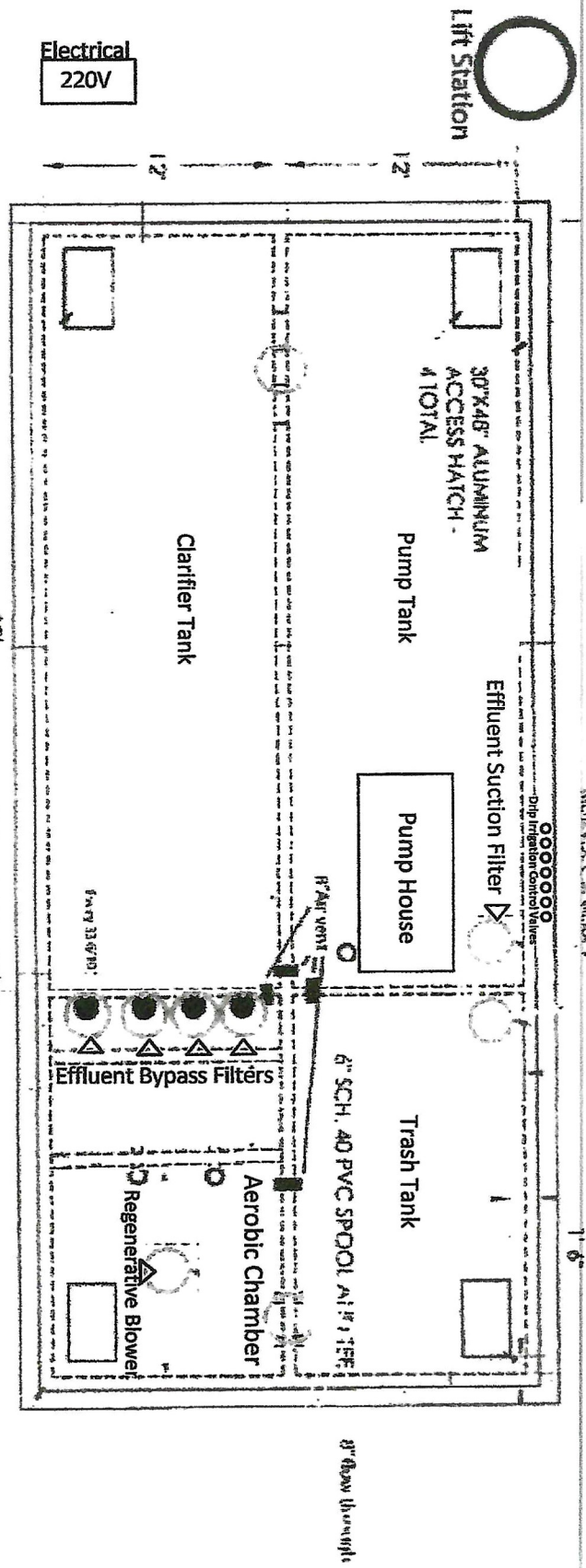


Villas at Timberwood

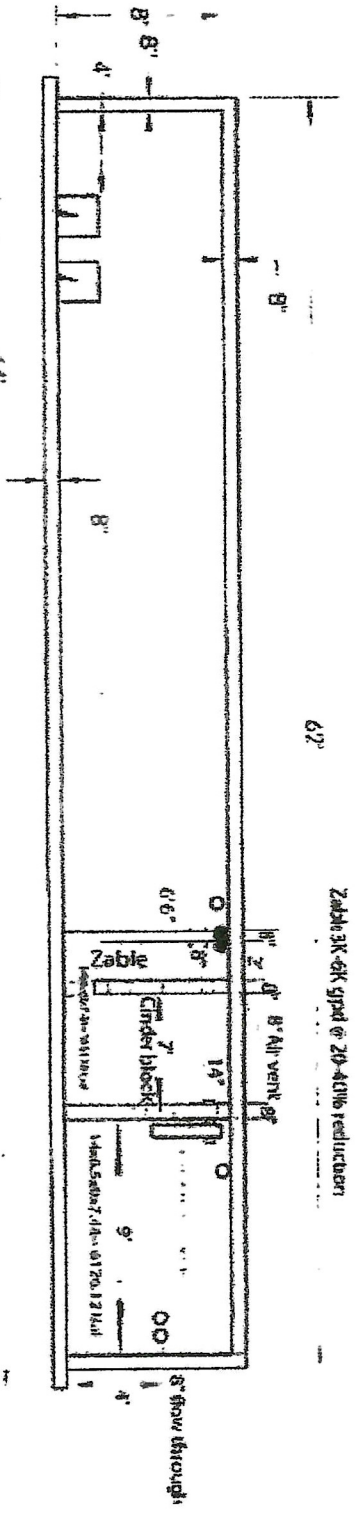
Mustang Creek



2' x 4' x 10' (approx)
 Lockdown for 2000 with
 Interlock Connection



27,000 GALLON
 PRETREATMENT TANK.
 2 COMPARTMENT TOTAL



Zable 3K-6K spool @ 20-40lb reduction

TANK SECTION VIEW

12

13

14

15

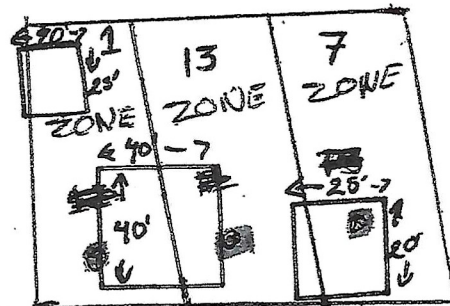
16

17

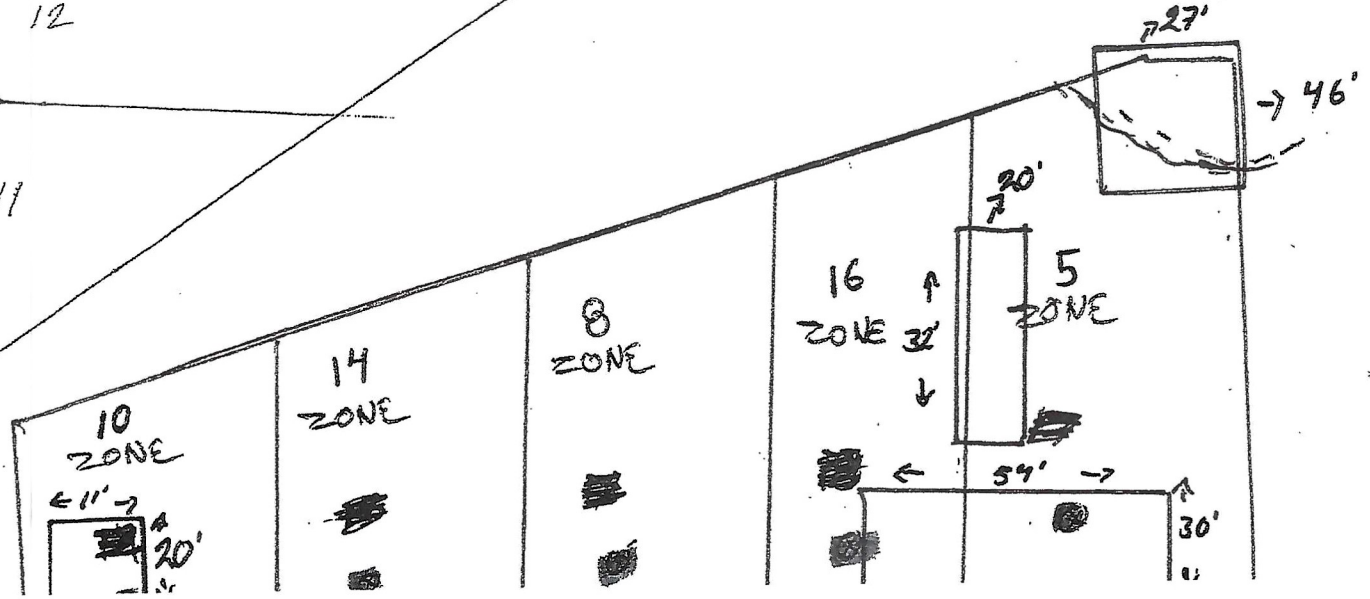
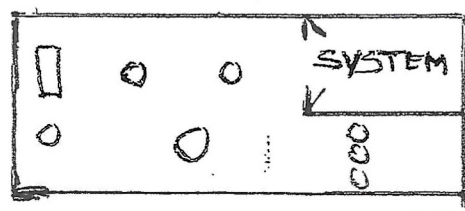
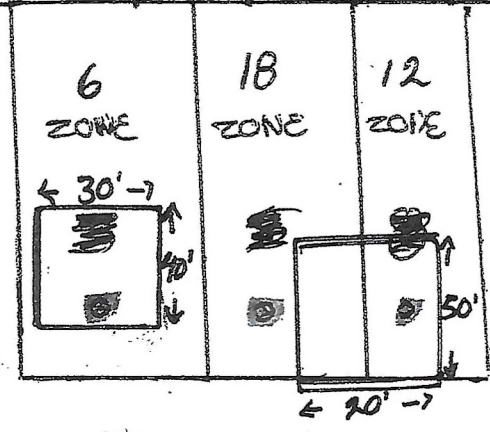
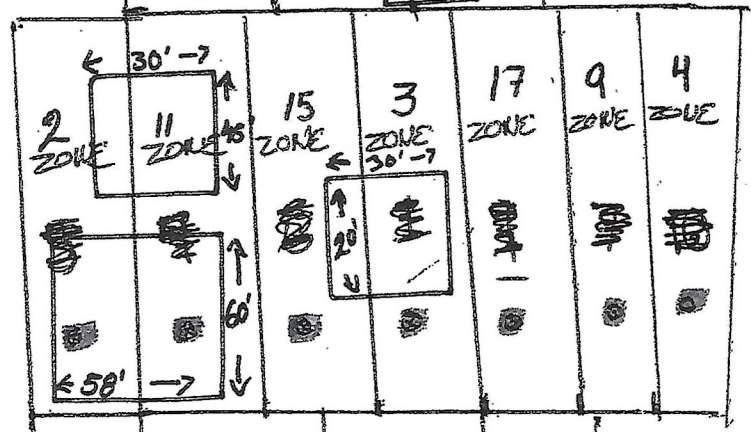
13

12

11



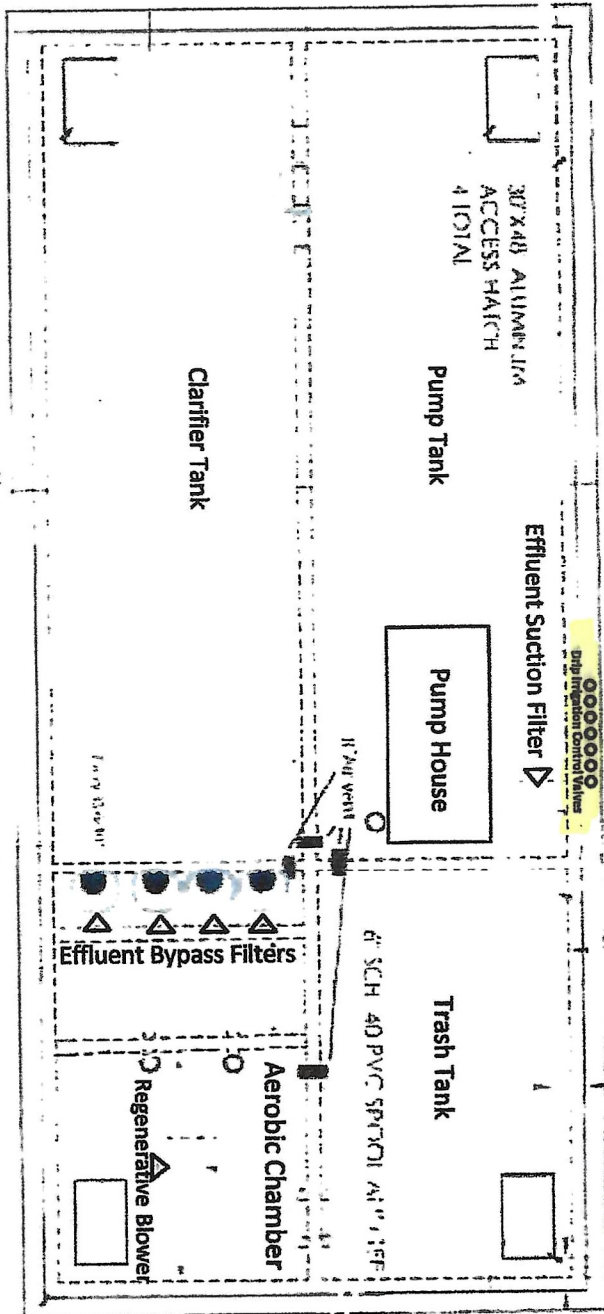
Moisture Sensors





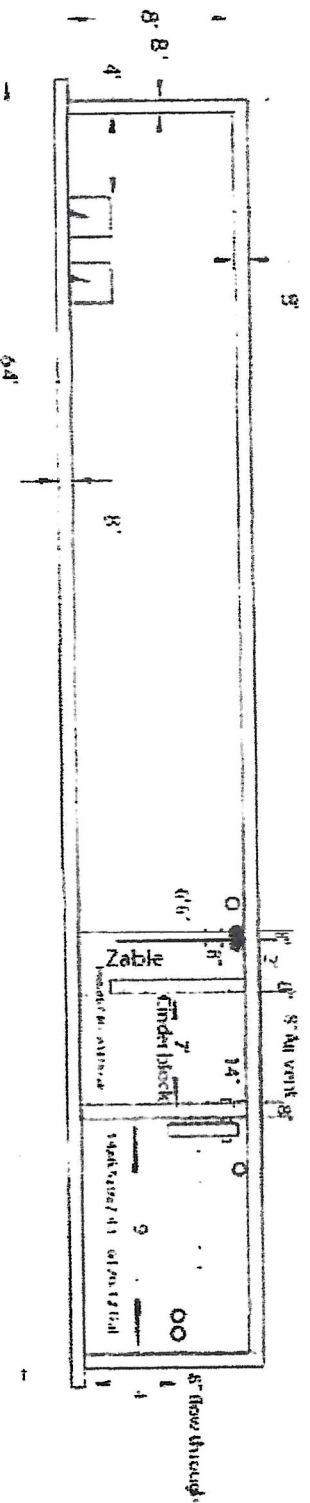
Lift Station

Electrical
220V



27,000 GALLON
PRETREATMENT TANK
2 COMPARTMENT TOTAL

1' 6" Deep Irrigation
Returns

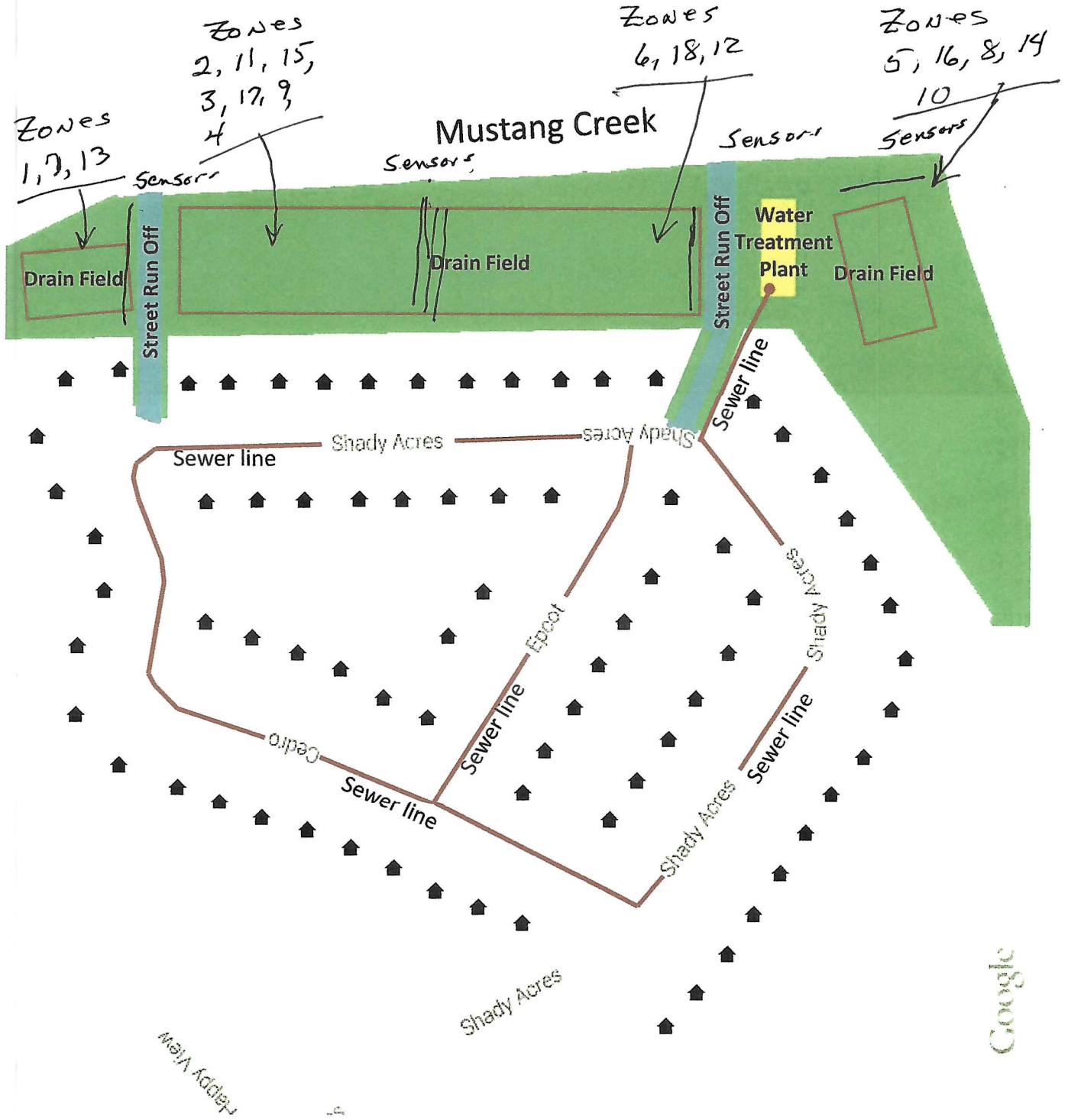


Zable BK 5K speed in 20 AC/10 reduction

2\"/>

TANK SECTION VIEW

Villas at Timberwood



12
13
14
15
16
17
13
12
11

