

NOTES:

THE LOCATIONS AND DEPTHS OF EXISTING UTILITIES, INCLUDING SERVICE LATERALS AND DRAINAGE STRUCTURES SHOWN ON THE PLANS ARE APPROXIMATE ONLY. THE CONTRACTOR SHALL VERIFY THE EXACT LOCATION AND DEPTHS OF UNDERGROUND UTILITIES AT LEAST 48 HOURS PRIOR TO CONSTRUCTION WHETHER SHOWN ON PLANS OR NOT, AND TO PROTECT THE SAME DURING CONSTRUCTION.

AT&T AND TIME WARNER CABLE LINES TO GO INTO JOINT TRENCH WITH C.P.S. ENERGY  
LOTS WITH CONFLICTING TRANSFORMER / SECONDARY ENCLOSURE ELECTRIC SERVICE AND WATER METER PLACED 5' FROM PROPERTY LINE WHERE THE CONFLICT OCCURS.

TYPICAL UTILITY CROSSINGS WILL HAVE  
2 - 6" SCH 80 PVC CONDUIT WITH SWEEPS,  
2 - 4" SCH 40 PVC CONDUIT WITH SWEEPS,  
THE TOTAL AMOUNT OF CONDUIT TO BE USED  
WILL BE DETERMINED DURING CONSTRUCTION.

TYPICAL IRRIGATION CROSSING WILL HAVE  
3 - 4" SCH 40 PVC CONDUIT WITH SWEEPS,

1. CONTRACTOR SHALL INSTALL PERMANENT MARKERS IN PROPOSED CURB WHERE CONDUITS CROSS THE ROADWAY (BOTH SIDES).
2. CONDUITS SHALL BE PVC WITH MINIMUM BURY OF 36 INCHES BELOW PROPOSED FINISHED GRADE. SCHEDULE 80 TO BE USED FOR CPS CONDUITS, ALL OTHER CONDUITS ARE SCHEDULE 40.
3. ALL CONDUITS SHALL BE EXTENDED BEHIND CURBS OR PROPOSED SIDEWALKS A MINIMUM OF 3 FEET AND CAPPED FOR FUTURE USE.
4. ALL CONDUIT SLEEVES TO BE USED FOR ELECTRIC, GAS, OR TELECOMMUNICATION UTILITY CROSSINGS SHALL BE INSTALLED TO MEET OR EXCEED DESIGN REQUIREMENTS FOR THE UTILITY AGENCY WHICH THEY ARE SERVING, INCLUDING BUT NOT LIMITED TO THE DEPTH, TRENCH PLACEMENT, AND PROXIMITY TO OTHER UTILITIES. THE CONTRACTOR IS SOLELY RESPONSIBLE FOR VERIFYING AND INSTALLING THE CONDUIT SLEEVES TO MEET THESE SPECIFICATIONS INCLUDING COORDINATING WITH THE UTILITY AGENCY FOR ANY REQUIRED INSPECTIONS.
5. STREET BASE AND DRAINAGE COMPLETION PRECEDES CPS UTILITY LINE INSTALLATION.
6. INSTALLATION IS AUTHORIZED BY THE DEVELOPER.

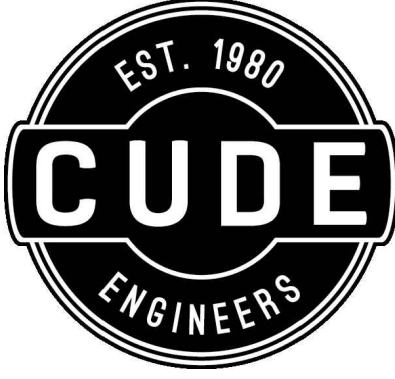
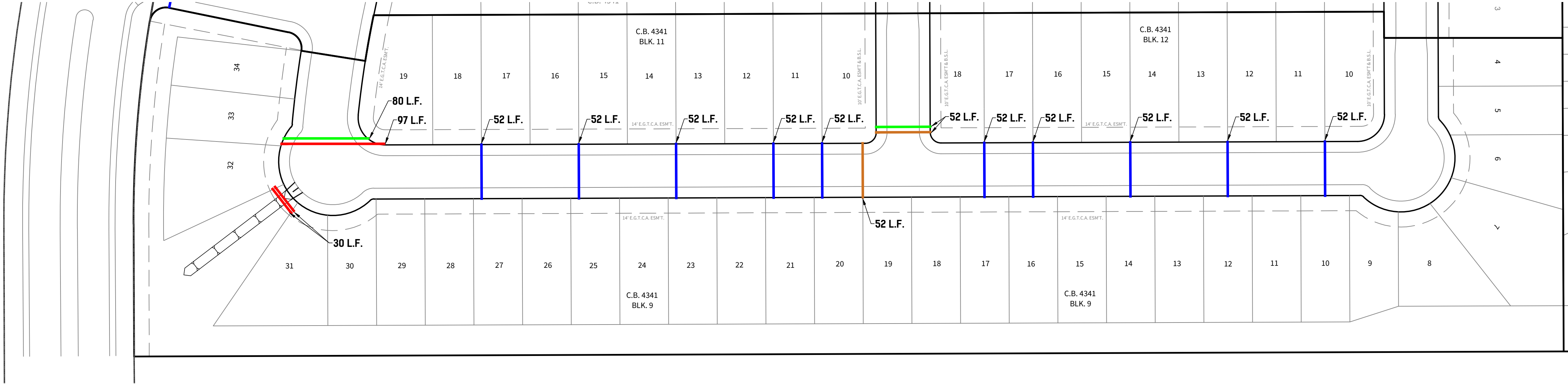
TRENCH EXCAVATION SAFETY PROTECTION

CONTRACTOR AND/OR CONTRACTOR'S INDEPENDENTLY RETAINED EMPLOYEE OR STRUCTURAL DESIGN/GEOTECHNICAL/SAFETY/EQUIPMENT CONSULTANT, IF ANY, SHALL REVIEW THESE PLANS AND AVAILABLE GEOTECHNICAL INFORMATION AND THE ANTICIPATED INSTALLATION SITE(S) WITHIN THE PROJECT WORK AREA IN ORDER TO IMPLEMENT CONTRACTOR'S TRENCH EXCAVATION SAFETY PROTECTION SYSTEMS, PROGRAMS AND/OR PROCEDURES FOR THE PROJECT DESCRIBED IN THE CONTRACT DOCUMENTS. THE CONTRACTOR'S IMPLEMENTATION OF THESE SYSTEMS, PROGRAMS AND/OR PROCEDURES SHALL PROVIDE FOR ADEQUATE TRENCH EXCAVATION SAFETY PROTECTION THAT COMPLY WITH AS A MINIMUM, OSHA STANDARDS FOR TRENCH EXCAVATIONS. SPECIFICALLY, CONTRACTOR AND/OR CONTRACTOR'S INDEPENDENTLY RETAINED EMPLOYEE OR SAFETY CONSULTANT SHALL IMPLEMENT A TRENCH SAFETY PROGRAM IN ACCORDANCE WITH OSHA STANDARDS GOVERNING THE PRESENCE AND ACTIVITIES OF INDIVIDUALS WORKING IN AND AROUND TRENCH EXCAVATION.

LEGEND

- EXISTING SANITARY SEWER
- PROPOSED SANITARY SEWER
- EXISTING SANITARY SEWER MANHOLE
- PROPOSED SANITARY SEWER MANHOLE
- EXISTING WATER MAIN
- PROPOSED WATER MAIN
- EXISTING STANDARD FIRE HYDRANT
- PROPOSED STANDARD FIRE HYDRANT
- EXISTING STANDARD GATE VALVE
- PROPOSED STANDARD GATE VALVE
- EXISTING PERMANENT BLOWOFF
- PROPOSED PERMANENT BLOWOFF
- EXISTING OVERHEAD ELECTRIC
- PROPOSED OVERHEAD ELECTRIC
- EXISTING GAS MAIN
- PROPOSED GAS MAIN
- EXISTING POWER POLE
- PROPOSED POWER POLE
- PROPOSED LIGHT POLE WITH 100W LED LIGHT
- ELECTRIC, GAS, TELEPHONE, & CABLE T.V. EASEMENT
- BUILDING SETBACK LINE
- LANDSCAPE
- UTILITY CONDUIT CROSSING
- IRRIGATION CONDUIT CROSSING

- PRIMARY CROSSING - A  
1 - 6" SCH. 80 CPS ELEC.  
1 - 4" SCH. 40 AT&T  
1 - 4" SCH. 40 SPECTRUM
- SECONDARY CROSSING - A  
1 - 6" SCH. 80 CPS ELEC.  
1 - 4" SCH. 40 AT&T  
1 - 4" SCH. 40 SPECTRUM
- 1 - 4" SCH. 40 CENTRIC GAS  
1 - 4" SCH. 40 CENTRIC TELECOMMUNICATIONS



4122 Pond Hill Road, Suite 101  
San Antonio, Texas 78231  
P:(210) 681.2951

TRES LAURELS  
UNIT 1B

CONDUIT PLAN

DATE

10/23/2025

PROJECT NO.  
03050.017

DRAWN BY  
RM / IV

CHECKED BY  
MAT/CJC

REVISIONS

- 1.
- 2.
- 3.
- 4.
- 5.
- 6.
- 7.
- 8.
- 9.
- 10.

CUDE ENGINEERS  
TBPELS No. 10048500

PLAT NO.  
24-11800221

24-1611

E1