

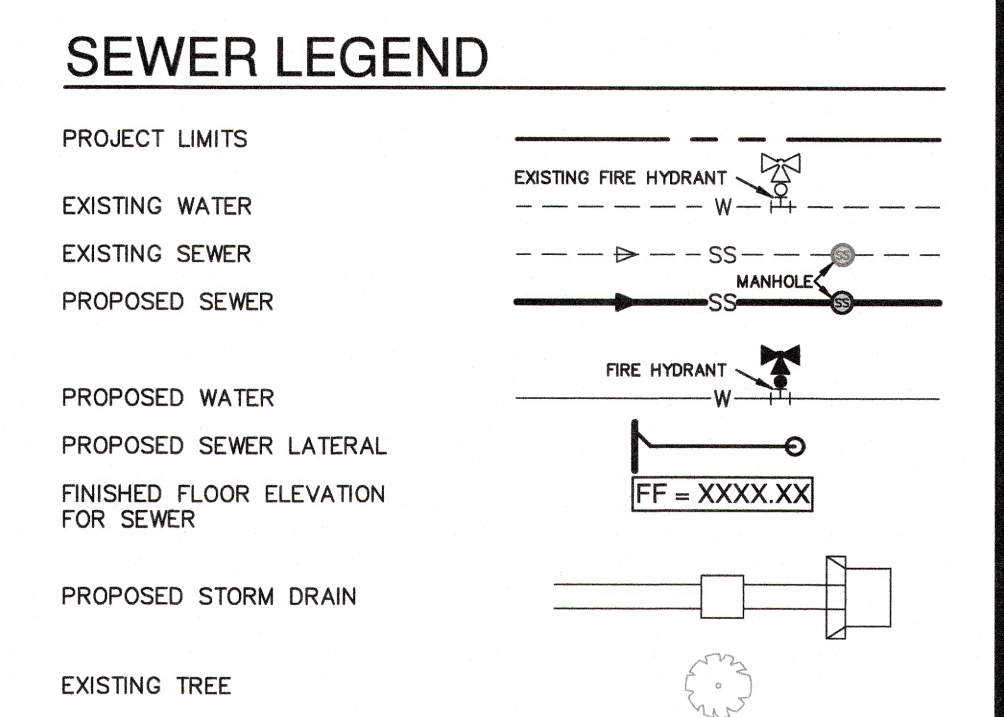
NO. REVISION SANITARY SEWER CHANGES

DATE 06/25/25

8/12/25

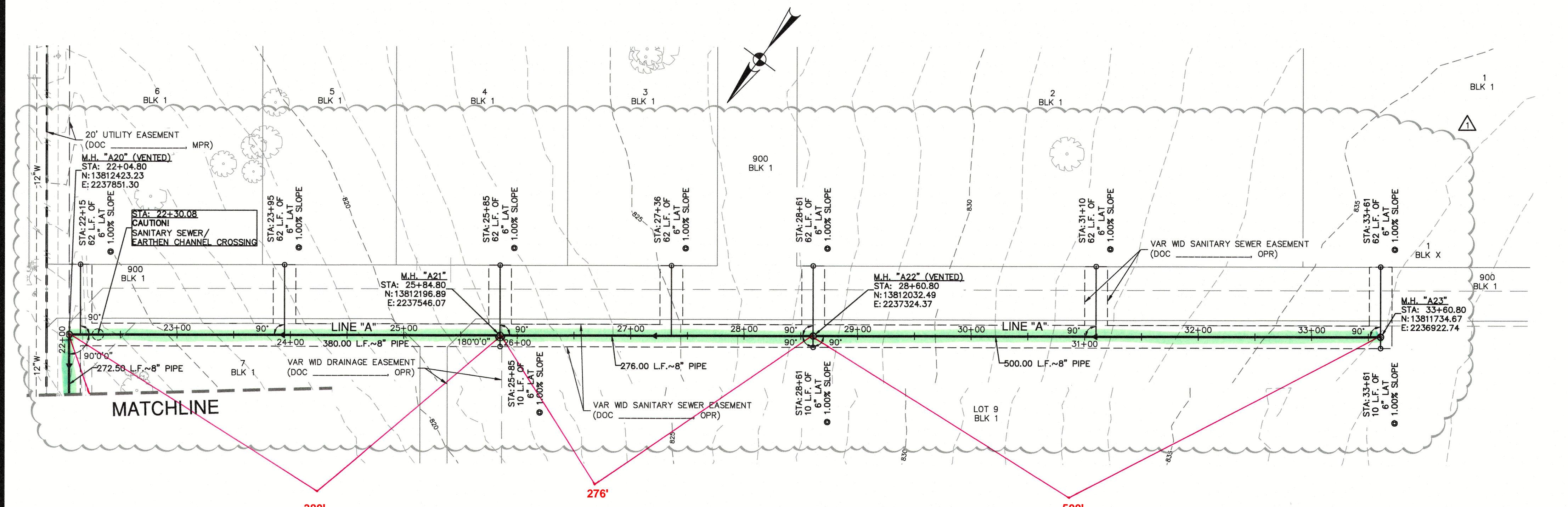
STATE OF TEXAS
JOCELYN PEREZ
98367
LICENSED PROFESSIONAL ENGINEER

J. Perez



PAPE-DAWSON ENGINEERS

1072 INDEPENDENCE DR. STE 102 NEW BRAUNFELS, TX 78102 | 800.682.5653
TEXAS ENGINEERING FIRM #470 1 TEXAS SURVEYING FIRM #1028880



FLOODPLAIN NOTE

1. NO PORTION OF ANY LOT ON THIS PROJECT IS WITHIN AN INDICATED SPECIAL FLOOD HAZARD ZONE ACCORDING TO THE FEMA FIRM MAP NO. 48187C0095F EFFECTIVE DATE 9/2/2009.

CITY OF NEW BRAUNFELS NOTES

1. NO VALVES, HYDRANTS, ETC. SHALL BE CONSTRUCTED WITHIN CURBS, SIDEWALKS, OR DRIVEWAYS.

2. ALL UTILITIES TO BE CONSTRUCTED PRIOR TO STREETS.

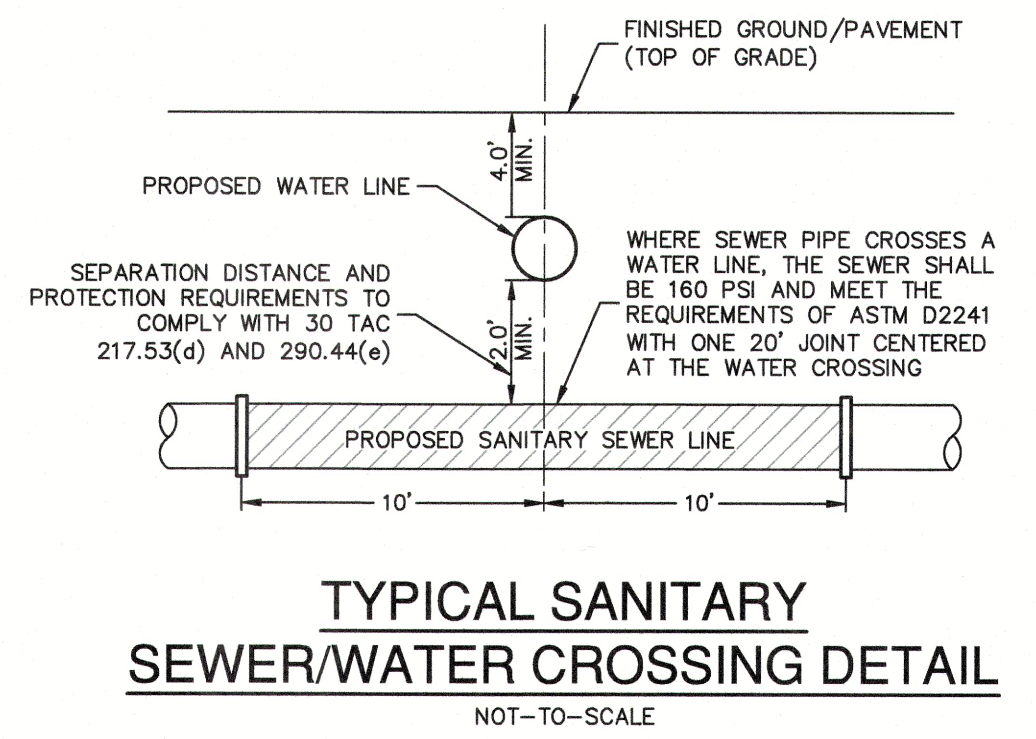
3. THIS PROJECT INCLUDES UTILITY INSTALLATIONS GREATER THAN 5-FOOT IN DEPTH. DEEP TRENCHES POSE COMPACTION TESTING AND CONSTRUCTION CHALLENGES AND CITY METHODS FOR TESTING AND COMPACTION MAY NOT BE ACHIEVABLE. A UTILITY COMPACTION PLAN WILL BE REQUIRED AND MUST BE SUBMITTED FOR APPROVAL TO CITY PRIOR TO UTILITY INSTALLATION.

4. UTILITY TRENCH COMPACTION - ALL UTILITY TRENCH COMPACTION TESTS WITHIN THE STREET PAVEMENT/SIDEWALK SECTION SHALL BE THE RESPONSIBILITY OF THE DEVELOPER'S GEOTECHNICAL ENGINEER. FILL MATERIAL SHALL BE PLACED IN UNIFORM LAYERS NOT TO EXCEED TWELVE INCHES (12") LOOSE. DETERMINE THE MAXIMUM LIFT THICKNESS BASED ON THE ABILITY OF THE COMPACTION OPERATION AND EQUIPMENT USED TO MEET THE REQUIRED DENSITY. EACH LAYER OF MATERIAL SHALL BE COMPACTED TO A MINIMUM 95% DENSITY AND TESTED FOR DENSITY AND MOISTURE IN ACCORDANCE WITH TEST METHODS TEX-113-E, TEX-114-E, TEX-115-E. THE NUMBER AND LOCATION OF REQUIRED TESTS SHALL BE DETERMINED BY THE GEOTECHNICAL ENGINEER AND APPROVED BY THE CITY OF NEW BRAUNFELS STREET INSPECTOR. AT A MINIMUM, TESTS SHALL BE TAKEN EVERY 200 LF FOR EACH LIFT AND EVERY OTHER SERVICE LINE. UPON COMPLETION OF TESTING THE GEOTECHNICAL ENGINEER SHALL PROVIDE THE CITY OF NEW BRAUNFELS STREET INSPECTOR WITH ALL TESTING DOCUMENTATION AND A CERTIFICATION STATING THAT THE PLACEMENT OF FILL MATERIAL HAS BEEN COMPLETED IN ACCORDANCE WITH THE PLANS. ADDITIONAL DENSITY TESTS MAY BE REQUESTED BY THE CITY OF NEW BRAUNFELS INSPECTOR.

VERAMENDI PRECINCT 11A
NEW BRAUNFELS, TEXAS

OVERALL SANITARY SEWER PLAN

ITEM	UNIT	QUANTITY
8" SANITARY SEWER PIPE	LF	2,361
LUES	EA	147
48" MANHOLES	EA	7
8" SANITARY SEWER LATERALS	LF	464



CAUTION!!

CONTRACTOR SHALL BE REQUIRED TO LOCATE ALL PUBLIC OR PRIVATE UTILITIES INCLUDING BUT NOT LIMITING TO: WATER, SEWER, TELEPHONE AND FIBER OPTIC LINES, SITE LIGHTING ELECTRIC, SECONDARY ELECTRIC, PRIMARY ELECTRICAL DUCTBANKS, LANDSCAPE IRRIGATION FACILITIES, AND GAS LINES. ANY UTILITY CONFLICTS THAT ARISE SHOULD BE COMMUNICATED TO THE ENGINEER IMMEDIATELY AND PRIOR TO CONSTRUCTION. THE CONTRACTOR SHALL CONTACT "TEXAS 811" A MINIMUM OF 48 HOURS PRIOR TO THE START OF CONSTRUCTION. ANY DAMAGE TO EXISTING UTILITIES SHALL BE THE SOLE RESPONSIBILITY OF THE CONTRACTOR AND THE REPAIR SHALL BE AT CONTRACTOR'S SOLE EXPENSE WHETHER THE UTILITY IS SHOWN ON THESE PLANS OR NOT.

TRENCH EXCAVATION SAFETY PROTECTION:

CONTRACTOR AND/OR CONTRACTOR'S INDEPENDENTLY RETAINED EMPLOYEE OR STRUCTURAL DESIGN/ GEOTECHNICAL/ SAFETY/EQUIPMENT CONSULTANT, IF ANY, SHALL REVIEW THESE PLANS AND ANY AVAILABLE GEOTECHNICAL INFORMATION AND THE ANTICIPATED INSTALLATION SITES WITHIN THE PROJECT WORK AREA IN ORDER TO IMPLEMENT CONTRACTOR'S TRENCH EXCAVATION SAFETY PROTECTION SYSTEMS, PROGRAMS AND/OR PROCEDURES FOR THE PROJECT DESCRIBED IN THE CONTRACT DOCUMENTS. THE CONTRACTOR'S IMPLEMENTATION OF THESE SYSTEMS, PROGRAMS AND/OR PROCEDURES SHALL PROVIDE FOR ADEQUATE TRENCH EXCAVATION SAFETY PROTECTION THAT COMPLY WITH AS A MINIMUM, OSHA STANDARDS FOR TRENCH EXCAVATIONS. SPECIFICALLY, CONTRACTOR AND/OR CONTRACTOR'S INDEPENDENTLY RETAINED EMPLOYEE OR SAFETY CONSULTANT SHALL IMPLEMENT A TRENCH SAFETY PROGRAM IN ACCORDANCE WITH OSHA STANDARDS GOVERNING THE PRESENCE AND ACTIVITIES OF INDIVIDUALS WORKING IN AND AROUND TRENCH EXCAVATION.

PLAT NO. _____

JOB NO. 30001-81

DATE AUGUST 2025

DESIGNER CP

CHECKED *MM* DRAWN *CP*

SHEET **C5.00**

Date: March 13, 2024, 9:39 AM - User ID: sflores
File: P:\300\0\N\B\Design\Civil\SSDA-30001-81.dwg

THIS DOCUMENT HAS BEEN PRODUCED FROM MATERIAL THAT WAS STORED AND/OR TRANSMITTED ELECTRONICALLY AND MAY HAVE BEEN INADVERTENTLY ALTERED. RELY ONLY ON FINAL HARDCOPY MATERIALS BEARING THE CONSULTANT'S ORIGINAL SIGNATURE AND SEAL. AERIAL IMAGERY PROVIDED BY GOOGLE UNLESS OTHERWISE NOTED. Imagery © 2016, CAPCO, Digital Globe, Texas Orthology Program, USA Farm Service Agency.