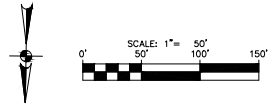
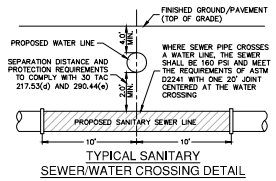
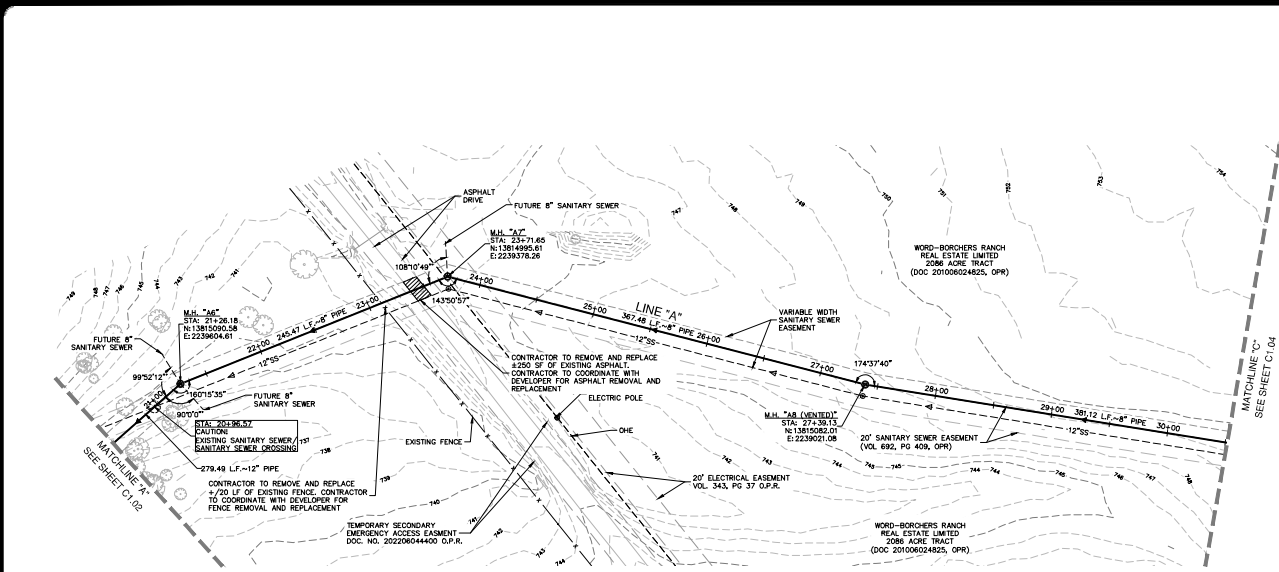


DATE: September 15, 2024, 8:45 AM, User: JG, Location: \\P:\Projects\2024\09-15-2024\09-15-2024.dwg

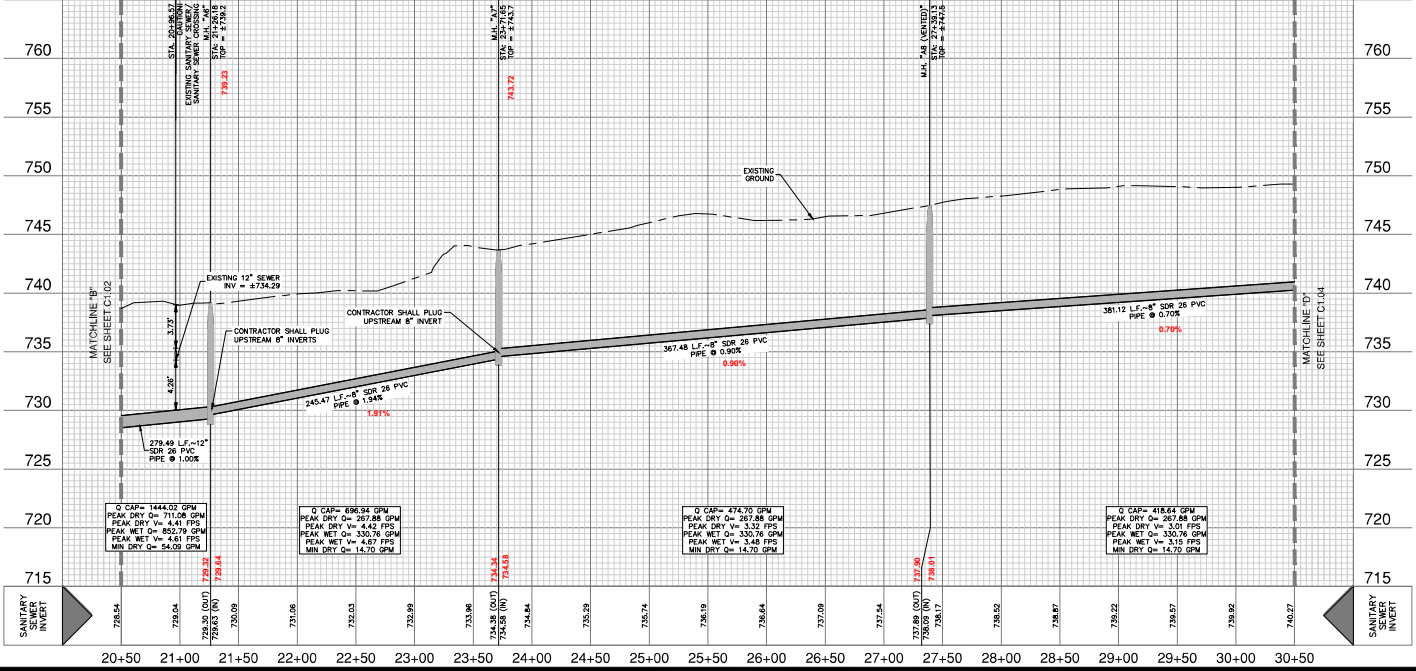


SEWER LEGEND

PROJECT LIMITS	EXISTING FIRE HYDRANT
EXISTING WATER	EXISTING UNDERGROUND ELECTRIC
EXISTING GAS	EXISTING SEWER
PROPOSED WATER	PROPOSED SEWER
PROPOSED SEWER LATERAL	PROPOSED STORM DRAIN
EXISTING STORM DRAIN	PROPOSED UNDERGROUND ELECTRIC
PROPOSED UNDERGROUND ELECTRIC	EXISTING TREE TO REMAIN

- ### NOTES
- SEWER PIPE WHERE WATER LINE CROSSES SHALL BE 160 P.S.I. AND MEET THE REQUIREMENTS OF ASTM D2241 WITH ONE 30" JOINT CENTERED AT WATER MAN.
 - NO VERTICAL STACKS ALLOWED FOR ANY LOTS UNLESS OTHERWISE SPECIFIED BY THE ENGINEER.
 - WHEN HORIZONTAL DISTANCE BETWEEN SEWER PIPES AND WATER MAIN IS LESS THAN 9 FOOT OF SEPARATION, SEWER MAIN SHALL BE INSTALLED WITH 160 PSI (AW) PRESSURE PIPE AND FITTINGS IN ACCORDANCE WITH NEU'S WATER CONNECTION POLICY IN THE VICINITY OF WATER MAINS.
 - CONTRACTOR SHALL ENSURE THAT MANHOLES OUTSIDE OF PAVED AREAS ARE SET WITH TOP ELEVATIONS 6" ABOVE FINISHED GRADE WITH CONCRETE RING EASEMENT. CONTRACTOR SHALL ENSURE THAT MANHOLES IN PAVED AREAS ARE SET TO MATCH TOP OF FINISHED GRADE.
 - ALL SEWER PIPES SHALL BE 8" PVC (SOR 26), UNLESS OTHERWISE NOTED.
 - CONTRACTOR IS TO VERIFY EXISTING INVERT OF SANITARY SEWER MAIN AND ALERT ENGINEER IMMEDIATELY OF ANY DIFFERENCE FROM INVERT SHOWN ON PLANS.
 - CONTRACTOR SHALL PROTECT ALL EXISTING FENCES. ANY FENCE DAMAGED BY THE CONTRACTOR SHALL BE REPAIRED BY THE CONTRACTOR AT THEIR EXPENSE.
 - THE CONTRACTOR WILL BE RESPONSIBLE FOR DETERMINING EXACT LOCATION OF ALL UTILITIES AND DRAINAGE STRUCTURES WHETHER SHOWN ON THE PLANS OR NOT. THE CONTRACTOR SHALL UNCOVER EXISTING UTILITIES PRIOR TO CONSTRUCTION TO VERIFY SIZE, GRADE, AND LOCATION. THE CONTRACTOR SHALL NOTIFY THE ENGINEER IMMEDIATELY OF ANY DEVIATIONS FROM PLANS PRIOR TO BEGINNING CONSTRUCTION. ANY DAMAGE TO EXISTING UTILITIES, WHETHER SHOWN ON THE PLANS OR NOT, SHALL BE THE CONTRACTOR'S RESPONSIBILITY TO REPAIR, AT HIS EXPENSE.
 - SEE THIS SHEET FOR TYPICAL SANITARY SEWER/WATER CROSSING DETAIL.
 - IF A CONFLICT EXISTS BETWEEN THE VARIOUS SUBMITTED DOCUMENTS (ENGINEERING CALCULATIONS, PROJECTED SPECIFICATIONS, PROJECTED PLANS, ADDENDUMS, ETC.), THE FOLLOWING DOCUMENTS TAKE PRECEDENCE: SPECIFICATIONS GOVERN OVER PLANS; SPECIAL CONDITIONS GOVERN OVER SPECIFICATIONS AND PLANS; ADDENDUMS TAKE PRECEDENCE OVER ALL.
 - LAST 20 LF. OF 8" STUB-OUT SHALL BE CONSTRUCTED OF P.V.C. SDR 26 (160 P.S.I.) PRESSURE PIPE.
 - ALL SEWER PIPE LATERALS SHALL BE SDR 26 (CLASS 160) PVC PIPE.
 - SERVICES SHALL HAVE A MINIMUM OF THIRTY-SIX (36) INCHES OF COVER.

SANITARY SEWER LINE "A"
STA 20+50.00 TO 30+50.00
VERTICAL SCALE: 1" = 5'
HORIZONTAL SCALE: 1" = 50'



NOTE:
FOR PAVEMENT DESIGN SECTION SEE GEOTECHNICAL ENGINEERING REPORT.

CAUTION!!
CONTRACTOR SHALL BE REQUIRED TO LOCATE ALL PUBLIC OR PRIVATE UTILITIES INCLUDING BUT NOT LIMITED TO: WATER, SEWER, TELEPHONE AND FIBER OPTIC LINES, SEE LIGHTING, SECONDARY ELECTRICAL, PRIMARY ELECTRICAL, UNDERGROUND CABLES, AND FLEXIBLE PIPES. CONTRACTOR SHALL NOTIFY ALL UTILITIES CONTACTS THAT ARISE SHOULD BE COMMUNICATED TO THE ENGINEER IMMEDIATELY AND PRIOR TO CONSTRUCTION. THE CONTRACTOR SHALL CONTACT "TEXAS 811" A MINIMUM OF 48 HOURS PRIOR TO THE START OF CONSTRUCTION. ANY DAMAGE TO EXISTING UTILITIES SHALL BE THE SOLE RESPONSIBILITY OF THE CONTRACTOR AND THE REPAIR SHALL BE AT CONTRACTOR'S SOLE EXPENSE WHETHER THE UTILITY IS SHOWN ON THESE PLANS OR NOT.

TRENCH EXCAVATION SAFETY THE PROTECTION:
CONTRACTOR AND/OR CONTRACTOR'S INDEPENDENTLY RETAINED EMPLOYEE OR STRUCTURAL DESIGN/GEOTECHNICAL/SAFETY/EQUIPMENT CONSULTANT IF ANY, SHALL REVIEW THESE PLANS AND ANY AVAILABLE GEOTECHNICAL INFORMATION AND THE ANTICIPATED INSTALLATION WITHIN THE PROJECT WORK AREA IN ORDER TO IMPLEMENT CONTRACTOR'S TRENCH EXCAVATION SAFETY PROTECTION SYSTEMS, PROCEDURES AND OHS PROCEDURES FOR THE PROJECT DESCRIBED IN THE CONTRACT DOCUMENTS. THE CONTRACTOR'S IMPLEMENTATION OF THESE SYSTEMS, PROGRAMS AND/OR PROCEDURES SHALL PROVIDE FOR ADEQUATE TRENCH EXCAVATION SAFETY PROTECTION THAT COMPLY WITH AS A MINIMUM, OSHA STANDARDS FOR TRENCH EXCAVATIONS. SPECIFICALLY, CONTRACTOR AND/OR CONTRACTOR'S INDEPENDENTLY RETAINED EMPLOYEE OR SAFETY CONSULTANT SHALL IMPLEMENT A TRENCH SAFETY PROGRAM IN ACCORDANCE WITH OSHA STANDARDS GOVERNING THE PRESENCE AND ACTIVITIES OF INDIVIDUALS WORKING IN AND AROUND TRENCH EXCAVATION.

PLAT NO. 30001-90
JOB NO. 30001-90
DATE SEPTEMBER 2024
DESIGNER CK
CHECKED CK DRAWN MG
SHEET C1.03

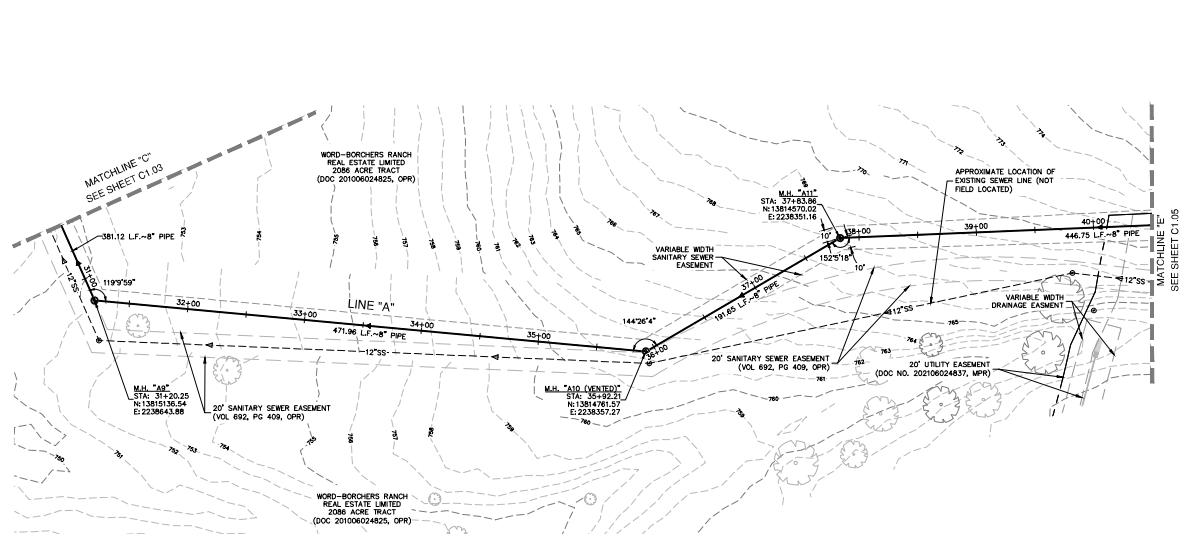
VERAMENDI S8-S9
NEW BRAUNFELS, TEXAS
SANITARY SEWER LINE A - PLAN & PROFILE
STA 20+50.00 TO 30+50.00

PAPE-DAWSON
ENGINEERS

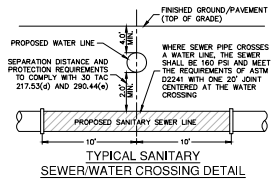
2-13-2024
J. Pape-Dawson
Texas Professional Seal No. 1234567890

DATE: 08/26/24 11:26 AM 30001-90
 FILE: P:\30001\DWG\30001-90.dwg

THIS DOCUMENT HAS BEEN PRODUCED FROM MATERIAL THAT HAS NOT BEEN FIELD VERIFIED OR TRANSMITTED ELECTRONICALLY AND MAY HAVE BEEN IMPROPERLY ADOPTED. ONLY THAT WHICH IS SHOWN HEREIN SHOULD BE CONSIDERED THE CONSULTANT'S ORIGINAL DESIGN. CONSULTANTS ARE NOT RESPONSIBLE FOR THE QUALITY OF THE ORIGINAL DESIGN OR FOR THE QUALITY OF THE ORIGINAL DESIGN OR FOR THE QUALITY OF THE ORIGINAL DESIGN OR FOR THE QUALITY OF THE ORIGINAL DESIGN.



SANITARY SEWER LINE "A"
 STA 30+50.00 TO 40+50.00



TYPICAL SANITARY SEWER/WATER CROSSING DETAIL
 NOT TO SCALE



SEWER LEGEND

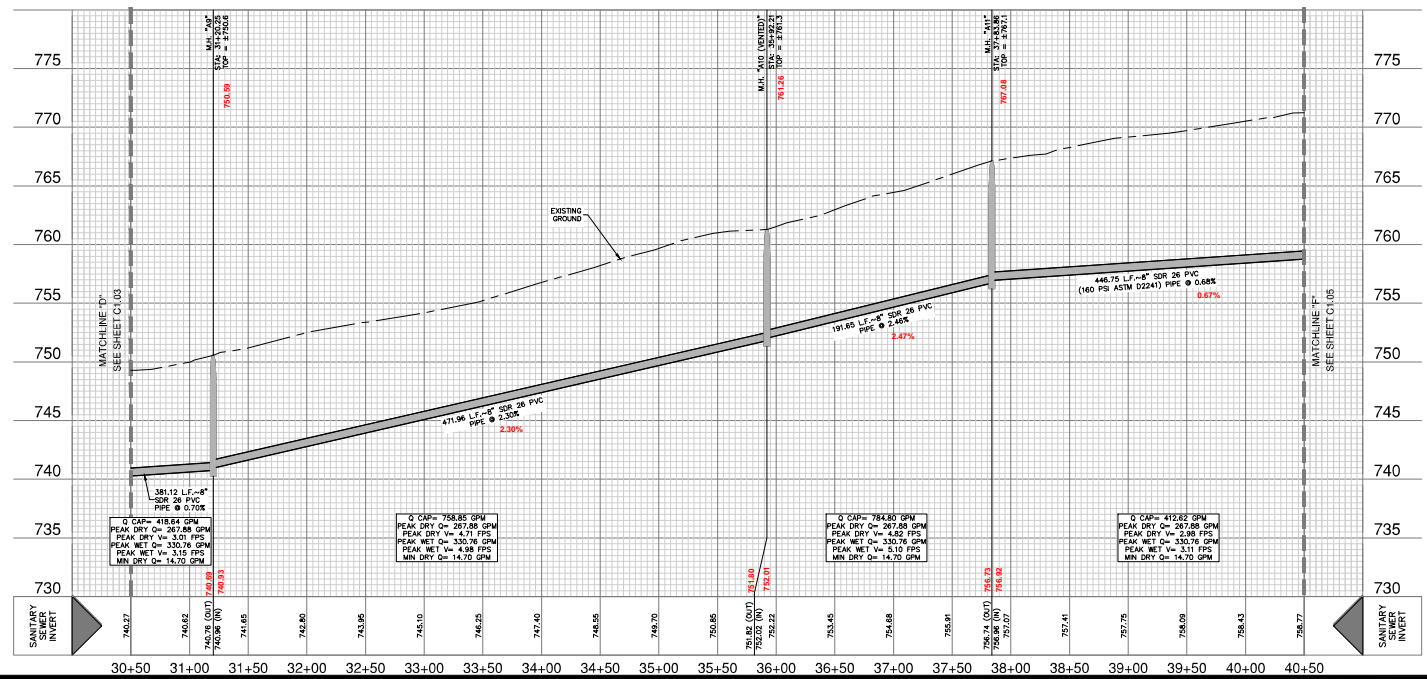
PROJECT LIMITS	---
EXISTING WATER	---
EXISTING UNDERGROUND ELECTRIC	---
EXISTING GAS	---
EXISTING SEWER	---
PROPOSED SEWER	---
PROPOSED WATER	---
PROPOSED SEWER LATERAL	---
PROPOSED STORM DRAIN	---
EXISTING STORM DRAIN	---
PROPOSED UNDERGROUND ELECTRIC	---
EXISTING TREE TO REMAIN	---

- NOTES**
- SEWER PIPE WHERE WATER LINE CROSSES SHALL BE 160 P.S.I. AND MEET THE REQUIREMENTS OF ASTM D2241 WITH ONE 20" JOINT CENTERED AT WATER MAN.
 - NO VERTICAL STACKS ALLOWED FOR ANY LOTS UNLESS OTHERWISE SPECIFIED BY THE ENGINEER.
 - WHEN HORIZONTAL DISTANCE BETWEEN SEWER PIPES AND WATER MAIN IS LESS THAN 9 FOOT OF SEPARATION, SEWER MAIN SHALL BE INSTALLED WITH 150 PSI (AW) PRESSURE PIPE AND FITTINGS IN ACCORDANCE WITH NEU'S WATER CONNECTION POLICY IN THE VICINITY OF WATER MAINS.
 - CONTRACTOR SHALL ENSURE THAT MANHOLES OUTSIDE OF PAVED AREAS ARE SET WITH TOP ELEVATIONS 2" ABOVE FINISHED GRADE WITH CONCRETE RING ENCASUREMENT. CONTRACTOR SHALL ENSURE THAT MANHOLES IN PAVED AREAS ARE SET TO MATCH TOP OF FINISHED GRADE.
 - ALL SEWER PIPES SHALL BE 8" PVC (SOR 26), UNLESS OTHERWISE NOTED.
 - CONTRACTOR IS TO VERIFY EXISTING INVERT OF SANITARY SEWER MAIN AND ALERT ENGINEER IMMEDIATELY OF ANY DIFFERENCE FROM INVERT SHOWN ON PLANS.
 - CONTRACTOR SHALL PROTECT ALL EXISTING FENCES. ANY FENCE DAMAGED BY THE CONTRACTOR SHALL BE REPAIRED BY THE CONTRACTOR AT THEIR EXPENSE.
 - THE CONTRACTOR WILL BE RESPONSIBLE FOR DETERMINING EXACT LOCATION OF ALL UTILITIES AND DRAINAGE STRUCTURES WHETHER SHOWN ON THE PLANS OR NOT. THE CONTRACTOR SHALL UNCOVER EXISTING UTILITIES PRIOR TO CONSTRUCTION TO VERIFY SIZE, GRADE, AND LOCATION. THE CONTRACTOR SHALL NOTIFY THE ENGINEER IMMEDIATELY OF ANY DEVIATIONS FROM PLANS PRIOR TO BEGINNING CONSTRUCTION. ANY DAMAGE TO EXISTING UTILITIES, WHETHER SHOWN ON THE PLANS OR NOT, SHALL BE THE CONTRACTOR'S RESPONSIBILITY TO REPAIR, AT HIS EXPENSE.
 - SEE THIS SHEET FOR TYPICAL SANITARY SEWER/WATER CROSSING DETAIL.
 - IF A CONFLICT EXISTS BETWEEN THE VARIOUS SUBMITTED DOCUMENTS (ENGINEERING CALCULATIONS, PROJECTED SPECIFICATIONS, PROJECTED PLANS, ADDENDUMS, ETC.), THE FOLLOWING DOCUMENTS TAKE PRECEDENCE: SPECIFICATIONS GOVERN OVER PLANS; SPECIAL CONDITIONS GOVERN OVER SPECIFICATIONS AND PLANS; ADDENDUMS TAKE PRECEDENCE OVER ALL.
 - LAST 20' L.F. OF 8" STUB-OUT SHALL BE CONSTRUCTED OF P.V.C. SDR 26 (160 P.S.I.) PRESSURE PIPE.
 - ALL SEWER PIPE LATERALS SHALL BE SDR 26 (CLASS 160) PVC PIPE.
 - SERVICES SHALL HAVE A MINIMUM OF THIRTY-SIX (36) INCHES OF COVER.

NOTE:
 FOR PAVEMENT DESIGN SECTION SEE GEOTECHNICAL ENGINEERING REPORT.

CAUTION!!
 CONTRACTOR SHALL BE REQUIRED TO LOCATE ALL PUBLIC OR PRIVATE UTILITIES INCLUDING BUT NOT LIMITED TO: WATER, SEWER, TELEPHONE AND FIBER OPTIC LINES, SITE LIGHTING, ELECTRIC, SECONDARY ELECTRIC, PRIMARY ELECTRICAL, CABLE, AND GAS LINES. CONTRACTOR SHALL VERIFY THE LOCATION OF ANY UTILITIES THAT ARE TO BE LOCATED. ANY DAMAGE TO EXISTING UTILITIES, WHETHER SHOWN ON THE PLANS OR NOT, SHALL BE THE CONTRACTOR'S RESPONSIBILITY TO REPAIR, AT HIS EXPENSE.

TRENCH EXCAVATION SAFETY PROTECTION:
 CONTRACTOR AND/OR CONTRACTOR'S INDEPENDENTLY RETAINED EMPLOYEE OR STRUCTURAL DESIGN/GEOTECHNICAL/SAFETY/UTILITY CONSULTANT IF ANY, SHALL REVIEW THESE PLANS AND ANY AVAILABLE GEOTECHNICAL INFORMATION AND THE ANTICIPATED INSTALLATION METHODS WITH THE PROJECT WORK AREA IN ORDER TO IMPLEMENT CONTRACTOR'S TRENCH EXCAVATION SAFETY PROTECTION SYSTEMS PROGRAMS AND PROCEDURES FOR THE PROJECT DESCRIBED IN THE CONTRACT DOCUMENTS. THE CONTRACTOR'S IMPLEMENTATION OF THESE SYSTEMS, PROGRAMS AND/OR PROCEDURES SHALL PROVIDE FOR ADEQUATE TRENCH EXCAVATION SAFETY PROTECTION THAT COMPLY WITH AS A MINIMUM, OSHA STANDARDS FOR TRENCH EXCAVATIONS. SPECIFICALLY, CONTRACTOR AND/OR CONTRACTOR'S INDEPENDENTLY RETAINED EMPLOYEE OR SAFETY CONSULTANT SHALL IMPLEMENT A TRENCH SAFETY PROGRAM IN ACCORDANCE WITH OSHA STANDARDS GOVERNING THE PRESENCE AND ACTIVITIES OF INDIVIDUALS WORKING IN AND AROUND TRENCH EXCAVATION.



VERTICAL SCALE: 1" = 5'
 HORIZONTAL SCALE: 1" = 50'

DATE: _____
 NO. REVISION: _____

3-13-2024

PAPE-DAWSON ENGINEERS

VERAMENDI S8-S9
 NEW BRAUNFELS, TEXAS

SANITARY SEWER LINE A - PLAN & PROFILE
 STA 30+50.00 TO 40+50.00

PLAT NO. 30001-90
 JOB NO. 30001-90
 DATE: SEPTEMBER 2024
 DESIGNER: CK
 CHECKED: CK DRAWN: MS
 SHEET: C1.04

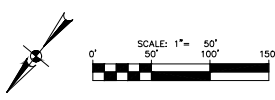
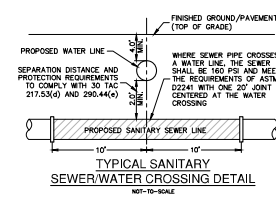
DATE	
NO. REVISION	



PAPE-DAWSON ENGINEERS
 1000 W. BROADWAY, SUITE 1000, HOUSTON, TEXAS 77002
 TEL: 281.555.1111 FAX: 281.555.1112

VERAMENDI S8-S9
 NEW BRAUNFELS, TEXAS
 SANITARY SEWER LINE A - PLAN & PROFILE
 STA 40+50.00 TO 49+50.00

PLAT NO. 30001-80
 JOB NO. 30001-80
 DATE: SEPTEMBER 2024
 DESIGNER: CK
 CHECKED: CK DRAWN: MJC
 SHEET: C1.05

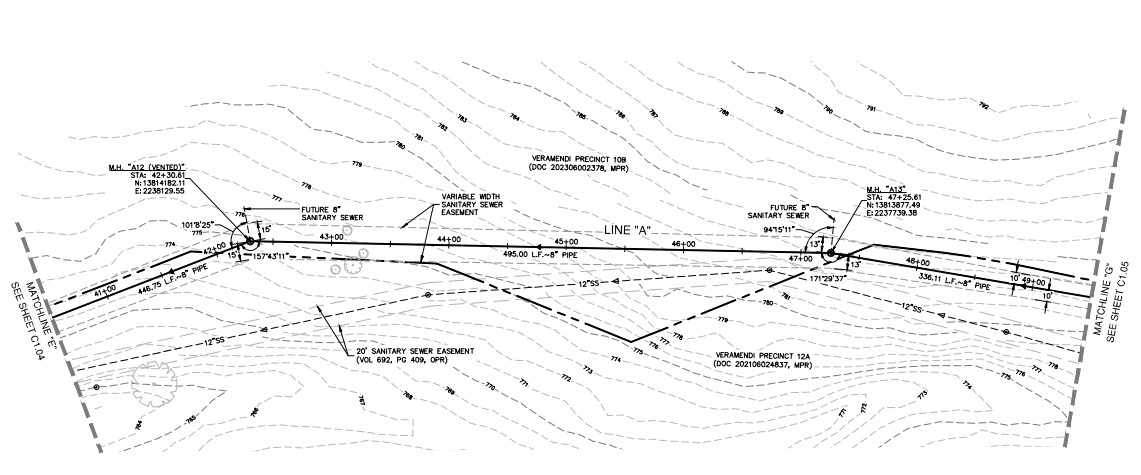


- NOTES**
- SEWER PIPE WHERE WATER LINE CROSSES SHALL BE 160 P.S.I. AND MEET THE REQUIREMENTS OF ASTM D2241 WITH ONE 30" JOINT CENTERED AT WATER MAN.
 - NO VERTICAL STAKES ALLOWED FOR ANY LOTS UNLESS OTHERWISE SPECIFIED BY THE ENGINEER.
 - WHEN HORIZONTAL DISTANCE BETWEEN SEWER PIPES AND WATER MAIN IS LESS THAN 9 FEET OF SEPARATION, SEWER MAIN SHALL BE INSTALLED WITH 150 PSI (AW) PRESSURE PIPE AND FITTINGS IN ACCORDANCE WITH NEUS' WATER CONNECTION POLICY IN THE VICINITY OF WATER MAINS (SEE SEWER NOTES SHEET C1.10)
 - CONTRACTOR SHALL ENSURE THAT MANHOLES OUTSIDE OF PAVED AREAS ARE SET WITH TOP ELEVATIONS 2" ABOVE FINISHED GRADE WITH CONCRETE RING ENCASUREMENT. CONTRACTOR SHALL ENSURE THAT MANHOLES IN PAVED AREAS ARE SET TO MATCH TOP OF FINISHED GRADE.
 - ALL SEWER PIPES SHALL BE 8" PVC (SDR 26), UNLESS OTHERWISE NOTED.
 - CONTRACTOR IS TO VERIFY EXISTING INVERT OF SANITARY SEWER MAIN AND ALERT ENGINEER IMMEDIATELY OF ANY DIFFERENCE FROM INVERT SHOWN ON PLANS.
 - CONTRACTOR SHALL PROTECT ALL EXISTING FENCES, ANY FENCE DAMAGED BY THE CONTRACTOR SHALL BE REPAIRED BY THE CONTRACTOR AT THEIR EXPENSE.
 - THE CONTRACTOR WILL BE RESPONSIBLE FOR DETERMINING EXACT LOCATION OF ALL UTILITIES AND DRAINAGE STRUCTURES WHETHER SHOWN ON THE PLANS OR NOT. THE CONTRACTOR SHALL UNCOVER EXISTING UTILITIES PRIOR TO CONSTRUCTION TO VERIFY SIZE, GRADE, AND LOCATION. THE CONTRACTOR SHALL NOTIFY THE ENGINEER IMMEDIATELY OF ANY DEVIATIONS FROM PLANS PRIOR TO BEGINNING CONSTRUCTION. ANY DAMAGE TO EXISTING UTILITIES, WHETHER SHOWN ON THE PLANS OR NOT, SHALL BE THE CONTRACTOR'S RESPONSIBILITY TO REPAIR AT HIS EXPENSE.
 - SEE THIS SHEET FOR TYPICAL SANITARY SEWER/WATER CROSSING DETAIL.
 - IF A CONFLICT EXISTS BETWEEN THE VARIOUS SUBMITTED DOCUMENTS (ENGINEERING CALCULATIONS, PROJECTED SPECIFICATIONS, PROJECTED PLANS, ADDENDUMS, ETC.), THE FOLLOWING DOCUMENTS TAKE PRECEDENCE: SPECIFICATIONS GOVERN OVER PLANS, SPECIAL CONDITIONS GOVERN OVER SPECIFICATIONS AND PLANS, ADDENDUMS TAKE PRECEDENCE OVER ALL.
 - LAST 20 L.F. OF 8" STUB-OUT SHALL BE CONSTRUCTED OF P.V.C. SDR 26 (160 P.S.I.) PRESSURE PIPE.
 - ALL SEWER PIPE LATERALS SHALL BE SDR 26 (CLASS 160) PVC PIPE.
 - SERVICES SHALL HAVE A MINIMUM OF THIRTY-SIX (36) INCHES OF COVER.

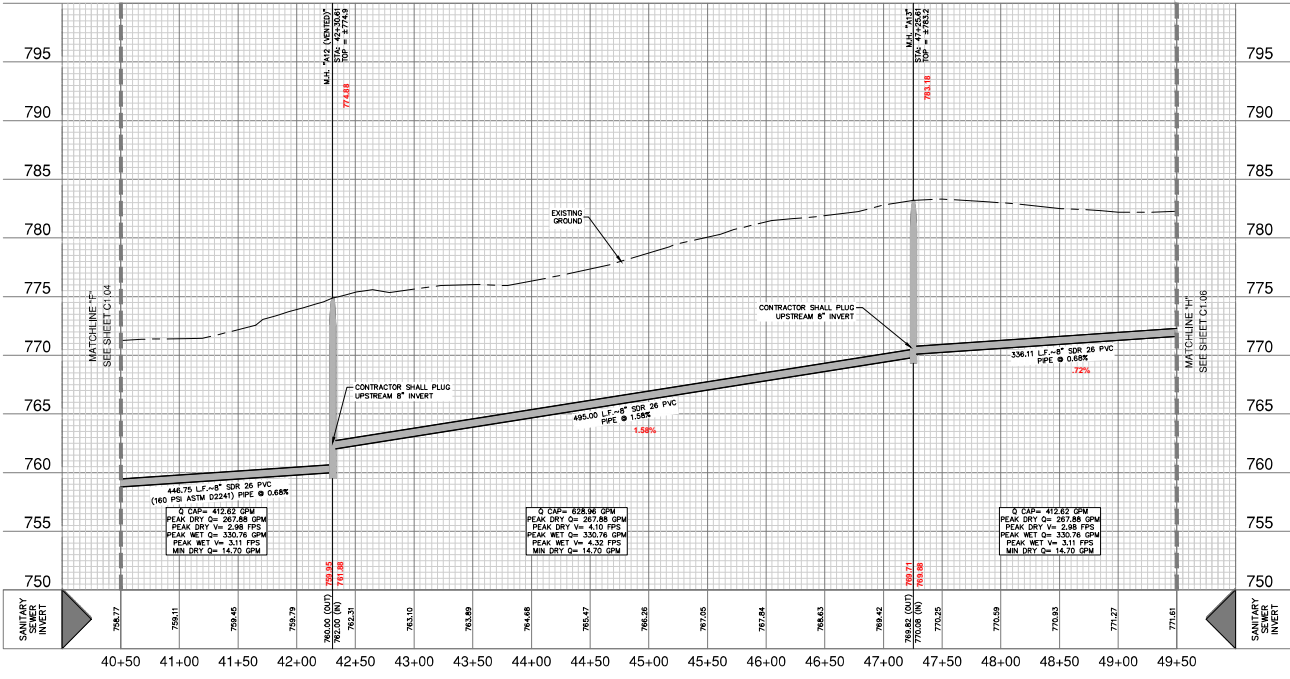
NOTE:
 FOR PAVEMENT DESIGN SECTION SEE GEOTECHNICAL ENGINEERING REPORT.

CAUTION!!
 CONTRACTOR SHALL BE REQUIRED TO LOCATE ALL PUBLIC OR PRIVATE UTILITIES INCLUDING BUT NOT LIMITED TO: WATER, SEWER, TELEPHONE AND FIBER OPTIC LINES, SITE LIGHTING, ELECTRIC, SECONDARY ELECTRIC, PRIMARY ELECTRIC, GAS, CABLE, AND FENCING. THE CONTRACTOR SHALL NOTIFY THE ENGINEER IMMEDIATELY AND PRIOR TO CONSTRUCTION OF ANY SUCH UTILITIES OR CONDITIONS THAT ARISE SHOULD BE COMMUNICATED TO THE ENGINEER IMMEDIATELY AND PRIOR TO CONSTRUCTION. THE CONTRACTOR SHALL CONSTRUCT "TEXAS BIT" A MINIMUM OF 48 HOURS PRIOR TO THE START OF CONSTRUCTION. ANY DAMAGE TO EXISTING UTILITIES SHALL BE THE SOLE RESPONSIBILITY OF THE CONTRACTOR AND THE REPAIR SHALL BE AT CONTRACTOR'S SOLE EXPENSE WHETHER THE UTILITY IS SHOWN ON THESE PLANS OR NOT.

TRENCH EXCAVATION SAFETY PROTECTION:
 CONTRACTOR AND/OR CONTRACTOR'S INDEPENDENTLY RETAINED EMPLOYEE OR STRUCTURAL DESIGNER/GEOTECHNICAL/SAFETY EQUIPMENT CONSULTANT IF ANY, SHALL REVIEW THESE PLANS AND ANY AVAILABLE GEOTECHNICAL INFORMATION AND THE ANTICIPATED INSTALLATION DETAILS OF THE PROJECT WORK AREA IN ORDER TO IMPLEMENT CONTRACTOR'S TRENCH EXCAVATION SAFETY PROTECTION SYSTEMS PROGRAMS AND JOB PROCEDURES FOR THE PROJECT DESCRIBED IN THE CONTRACT DOCUMENTS. THE CONTRACTOR'S IMPLEMENTATION OF THESE SYSTEMS, PROGRAMS AND/OR PROCEDURES SHALL PROVIDE FOR ADEQUATE TRENCH EXCAVATION SAFETY PROTECTION THAT COMPLY WITH AS A MINIMUM, OSHA STANDARDS FOR TRENCH EXCAVATIONS. SPECIFICALLY, CONTRACTOR AND/OR CONTRACTOR'S INDEPENDENTLY RETAINED EMPLOYEE OR SAFETY CONSULTANT SHALL IMPLEMENT A TRENCH SAFETY PROGRAM IN ACCORDANCE WITH OSHA STANDARDS GOVERNING THE PRESENCE AND ACTIVITIES OF INDIVIDUALS WORKING IN AND AROUND TRENCH EXCAVATION.



SANITARY SEWER LINE "A"
 STA 40+50.00 TO 49+50.00
 VERTICAL SCALE: 1" = 5'
 HORIZONTAL SCALE: 1" = 50'



Date: September 15, 2024, 11:15 AM, User: ck, Location: C:\Users\ck\OneDrive\Documents\Projects\30001-80.dwg
 Plot: 10/20/2024 10:00 AM, User: ck, Location: C:\Users\ck\OneDrive\Documents\Projects\30001-80.dwg

THIS DOCUMENT HAS BEEN PRODUCED FROM MATERIAL THAT HAS STORED AND/OR TRANSMITTED ELECTRONICALLY AND MAY HAVE BEEN IMPROPERLY A SCANNED. ONLY ORIGINAL HARD COPY SHOULD BE USED TO VERIFY THE ORIGINAL. CONTRACTOR AND USER SHALL VERIFY AND CORRECT ANY ERRORS. UNLESS OTHERWISE NOTED, THIS DOCUMENT IS THE PROPERTY OF PAPE-DAWSON ENGINEERS AND SHALL REMAIN THE PROPERTY OF PAPE-DAWSON ENGINEERS. NO PART OF THIS DOCUMENT IS TO BE REPRODUCED OR TRANSMITTED IN ANY FORM OR BY ANY MEANS, WITHOUT THE WRITTEN PERMISSION OF PAPE-DAWSON ENGINEERS.

