

ALL CUSTOMER INSTALLATIONS REQUIRE INSPECTION BY NBU.

UNDERGROUND CONDUIT TO BE INSTALLED ACCORDING TO NBU SPECIFICATION EU-910. **CONDUIT TO BE SIZED BY NBU** AND HAVE 1" PROJECTION ABOVE CONCRETE, 36" RADIUS, 90° SWEEPS. PULL STRING TO BE INSTALLED BY CUSTOMER IN EACH CONDUIT.

COPPER-CLAD GROUND RODS, 5/8" X 8', 2 REQUIRED, TO HAVE 4" PROJECTION ABOVE TOP ON CONCRETE.

CONCRETE TO BE MIN. 3000 PSI.

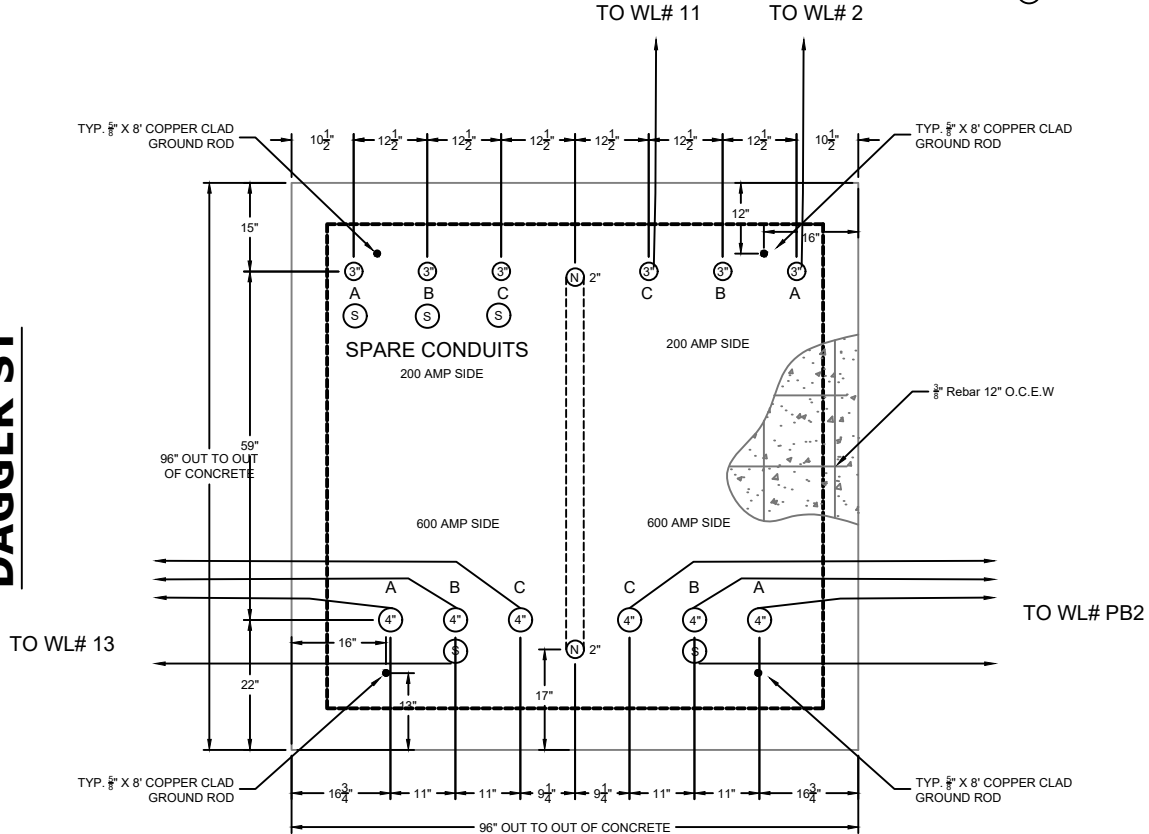
TOP VIEW

A, B, C = AØ, BØ, CØ
RESPECTIVELY

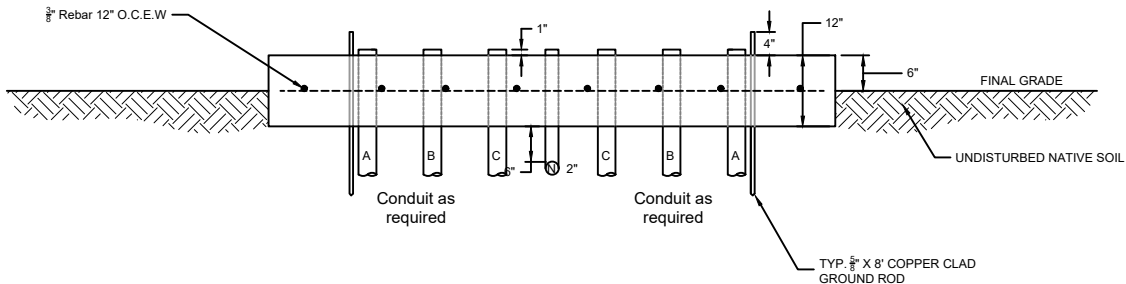
(S) = SPARE CONDUIT

(N) = NEUTRAL BUSS CONDUIT

DAGGER ST



HILLCOUNTRY DR



COMPACTED TxDOT GRADE 4, TYPE A,
FLEXIBLE BASE MATERIAL, OR OTHER
APPROVED MATERIAL FROM BOTTOM
OF TRENCH TO BOTTOM OF PAD.



Electric Engineering
355 FM 306
PO Box 310289
New Braunfels, TX 78131-0289
830-608-8951

PSE-9 SWITCH GEAR FOUNDATION
GU-944 WL# 1

ISSUED

02-18-2025

SCALE

NTS

DRAWING BY

A. OWEN