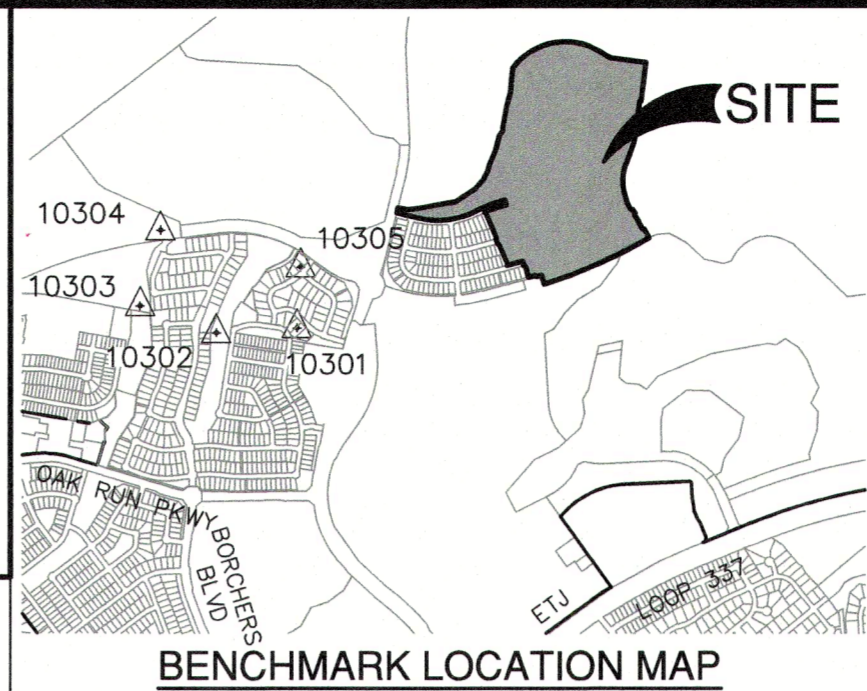
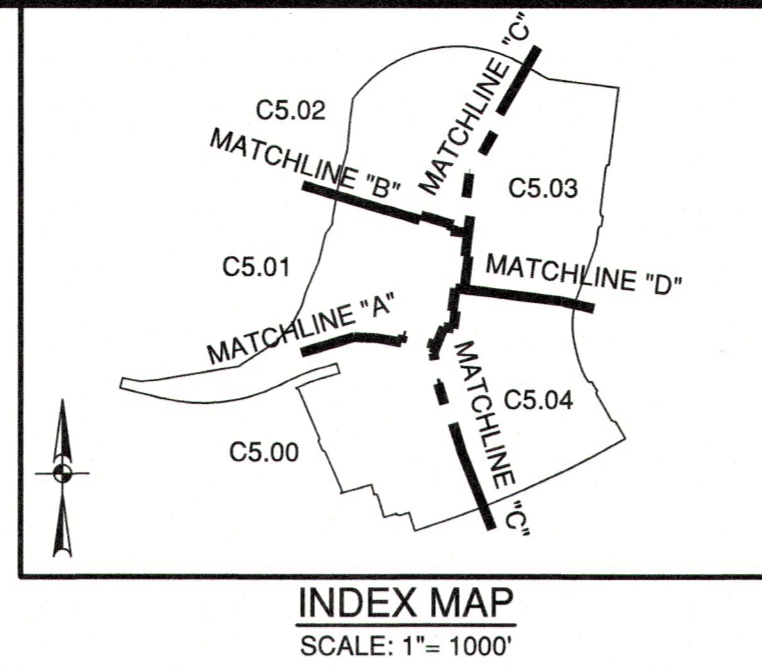
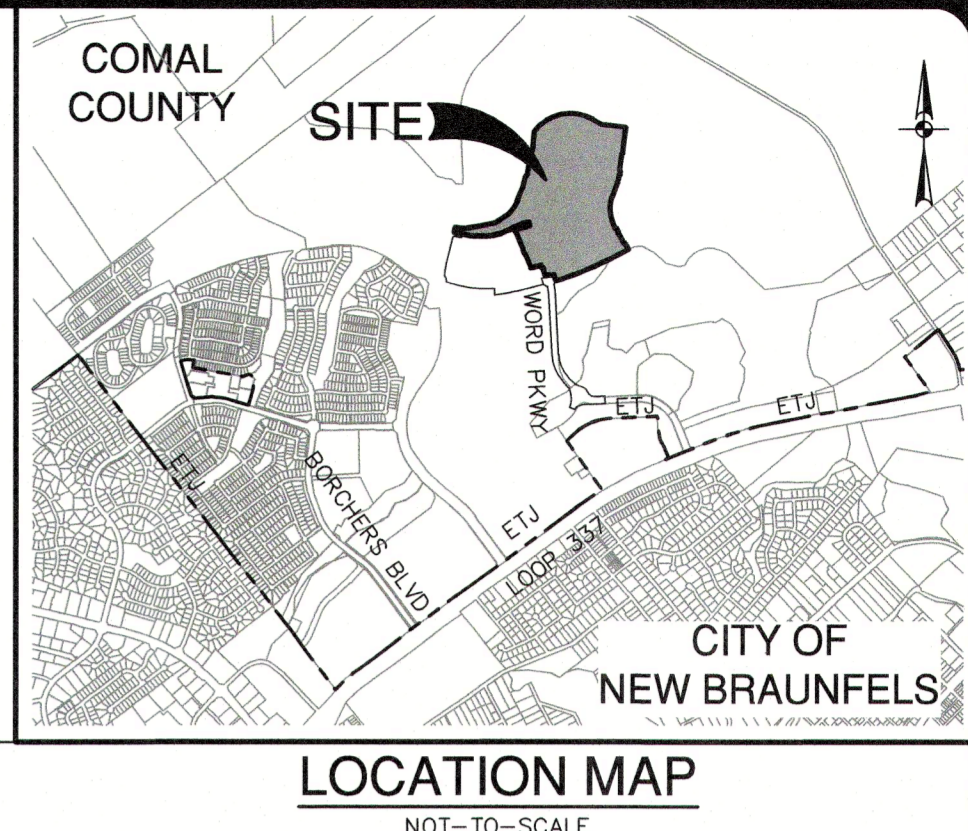


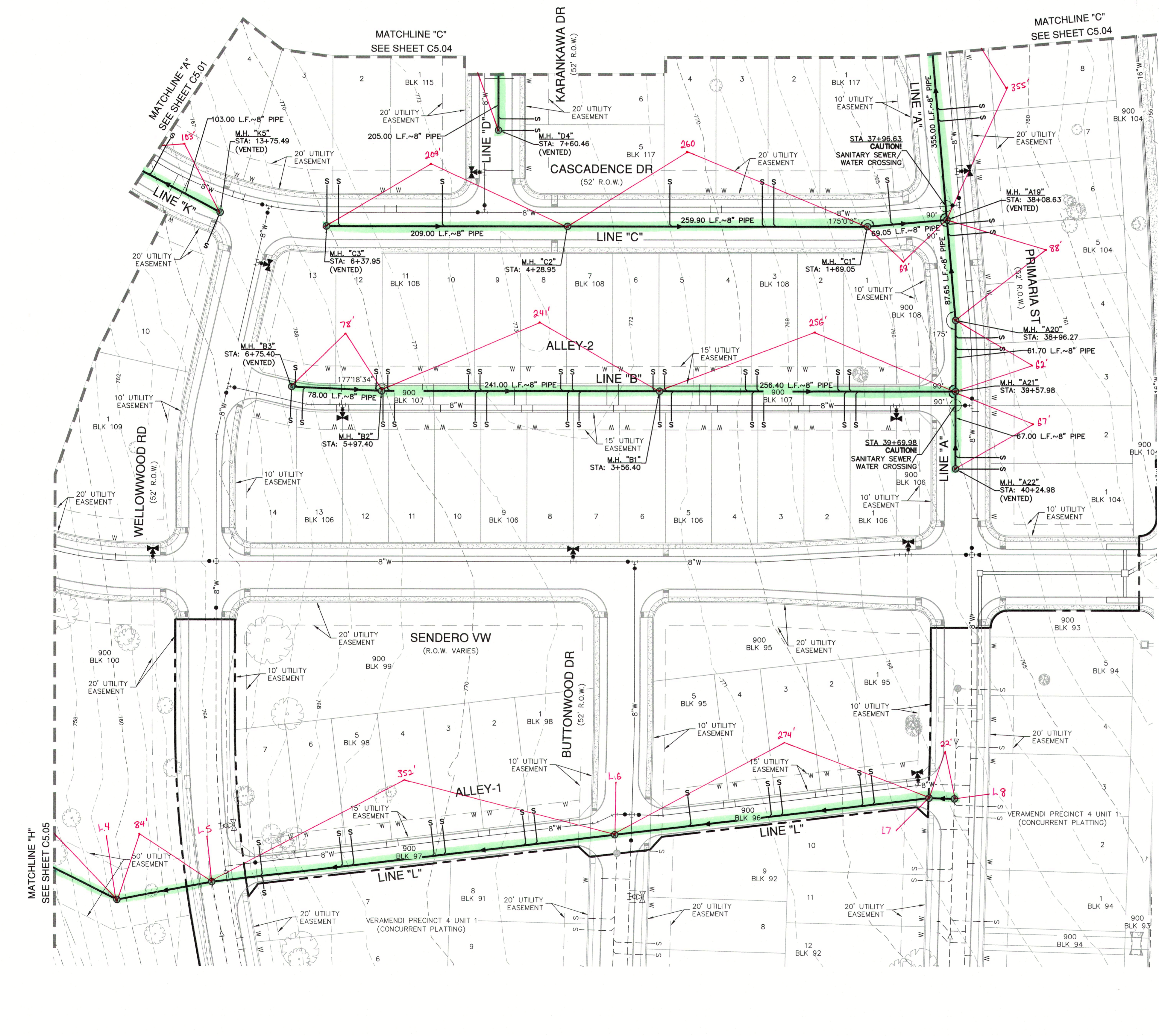
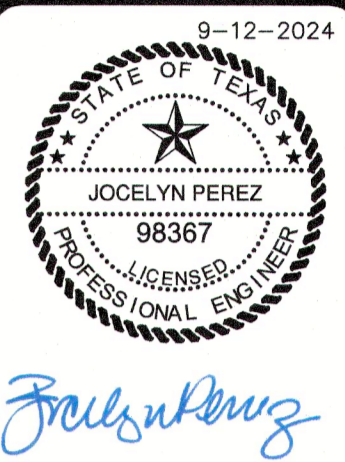
WASTEWATER (NBU JOB NO. WW-226996)		
ITEM	UNIT	QUANTITY
8" SANITARY SEWER PIPE	LF	12,477
LUES	EA	215
6" WASTEWATER SERVICE	EA	215
48" MANHOLES	EA	62



BENCHMARKS				
HORIZONTAL AND VERTICAL CONTROL POINTS				
Point #	Northing	Easting	Elevation	Full Description
10300	13815253.76	2237967.00	787.38	SET I.R. REDCAP (TRAV)
10301	13816937.43	2237678.90	782.13	SET I.R. REDCAP (TRAV)
10302	13816887.26	2236841.89	758.22	SET I.R. REDCAP (TRAV)
10303	13817166.65	2236050.01	763.76	SET MAG NAIL (TRAV)
10304	13817949.35	2236263.15	751.35	SET MAG NAIL (TRAV)
10305	13817569.76	2237717.86	753.14	SET MAG NAIL (TRAV)



DATE	NO.	REVISION

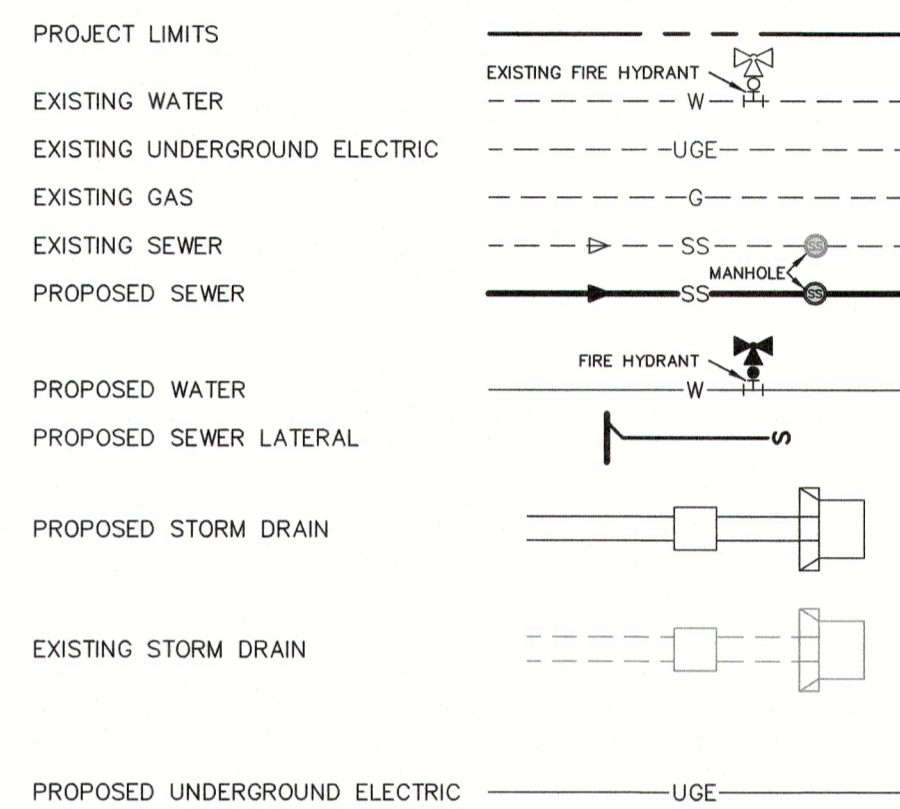


MH A4 RIM, 730.652	MH A15 RIM, 748.920
MH A3 RIM, 729.910	MH A1 RIM, 787.074
MH G1 RIM, 731.025	MH A2 RIM, 714.306
MH G2 RIM, 730.637	LINE L MH A8 RIM, 767.278
MH G3 RIM, 732.326	LINE L MH A7 RIM, 767.483
MH G4 RIM, 731.843	LINE L MH A6 RIM, 773.215
MH G5 RIM, 733.012	LINE L MH A5 RIM, 764.263
MH G6 RIM, 736.200	LINE L MH A4 RIM, 759.350
MH G7 RIM, 742.614	LINE L MH A1 RIM, 713.060
MH G8 RIM, 747.641	LINE L MH A3 RIM, 750.600
MH G9 RIM, 749.881	LINE L MH A2 RIM, 734.920
MH G10 RIM, 754.896	MH A5 RIM, 738.782
MH G11 RIM, 757.435	MH A6 RIM, 739.650
MH A22 RIM, 765.687	MH A7 RIM, 740.580
MH A21 RIM, 766.497	MH A8 RIM, 742.100
MH A20 RIM, 766.870	MH A9 RIM, 742.850
MH A19 RIM, 765.411	MH A10 RIM, 744.930
MH A18 RIM, 757.851	MH A7 RIM, 740.580
MH A17 RIM, 750.710	MH A12 RIM, 747.580
MH A16 RIM, 748.604	MH A13 RIM, 745.180
MH E1 RIM, 749.671	MH A14 RIM, 746.860
MH E2 RIM, 755.086	MH A15 RIM, 748.920
MH E3 RIM, 761.411	
MH E4 RIM, 767.961	
MH E6 RIM, 765.169	
MH E5 RIM, 767.031	
MH F1 RIM, 772.616	
MH F2 RIM, 764.140	
MH J1 RIM, 754.402	
MH I2 RIM, 753.728	
MH I3 RIM, 751.216	
MH I1 RIM, 741.201	
MH K1 RIM, 746.021	
MH K2 RIM, 746.772	
MH H2 RIM, 745.042	
MH H1 RIM, 743.217	
MH K3 RIM, 759.269	
MH K4 RIM, 763.852	
MH K5 RIM, 765.961	
MH C3 RIM, 768.027	
MH C2 RIM, 770.000	
MH C1 RIM, 766.120	
MH D4 RIM, 770.633	
MH D3 RIM, 771.802	
MH D2 RIM, 768.859	
MH D1 RIM, 761.146	
MH B1 RIM, 772.066	
MH B2 RIM, 770.416	
MH B3 RIM, 767.141	
EX MH RIM, 692.741	

MH K4 FLOWLINE, 755.142	MH A1 FLOWLINE, 698.987
MH K5 FLOWLINE, 757.844	MH A2 FLOWLINE, 705.410
MH C3 FLOWLINE, 759.800	MH A3 FLOWLINE, 720.440
MH C2 FLOWLINE, 759.801	MH A4 FLOWLINE, 722.166
MH C1 FLOWLINE, 757.360	MH G1 FLOWLINE, 721.233
MH D1 FLOWLINE, 752.816	MH G2 FLOWLINE, 721.983
MH D2 FLOWLINE, 760.784	MH G3 FLOWLINE, 723.012
MH D3 FLOWLINE, 761.371	MH G4 FLOWLINE, 723.651
MH D4 FLOWLINE, 762.263	MH G5 FLOWLINE, 724.321
MH E1 FLOWLINE, 741.382	MH G6 FLOWLINE, 728.229
MH E2 FLOWLINE, 746.857	MH G7 FLOWLINE, 734.533
MH E3 FLOWLINE, 753.227	MH G8 FLOWLINE, 739.134
MH E4 FLOWLINE, 754.786	MH G9 FLOWLINE, 740.998
MH B3 FLOWLINE, 759.602	MH G10 FLOWLINE, 746.663
MH B2 FLOWLINE, 759.006	MH G11 FLOWLINE, 749.332
MH B1 FLOWLINE, 757.982	MH A22 FLOWLINE, 757.798
LINE L MH A8 FLOWLINE, 756.120	MH A21 FLOWLINE, 756.931
LINE L MH A7 FLOWLINE, 755.998	MH A20 FLOWLINE, 756.489
LINE L MH A6 FLOWLINE, 754.920	MH A19 FLOWLINE, 756.113
LINE L MH A5 FLOWLINE, 753.048	MH A18 FLOWLINE, 749.254
LINE L MH A4 FLOWLINE, 745.506	MH A17 FLOWLINE, 741.088
LINE L MH A3 FLOWLINE, 728.149	MH A16 FLOWLINE, 740.350
LINE L MH A2 FLOWLINE, 711.494	MH E6 FLOWLINE, 756.331
LINE L MH A1 FLOWLINE, 702.357	MH E5 FLOWLINE, 755.509
MH H1 FLOWLINE, 734.859	MH F1 FLOWLINE, 756.566
MH H2 FLOWLINE, 736.778	MH F2 FLOWLINE, 757.614
MH K1 FLOWLINE, 737.349	MH K2 FLOWLINE, 738.212
MH I1 FLOWLINE, 732.581	MH K3 FLOWLINE, 750.672
MH I3 FLOWLINE, 743.268	
MH I2 FLOWLINE, 742.451	
MH J1 FLOWLINE, 746.373	
MH A5 FLOWLINE, 729.620	
MH A6 FLOWLINE, 732.157	
MH A7 FLOWLINE, 733.974	
MH A8 FLOWLINE, 734.608	
MH A9 FLOWLINE, 735.115	
MH A10 FLOWLINE, 735.849	
MH A11 FLOWLINE, 736.583	
MH A12 FLOWLINE, 737.026	
MH A13 FLOWLINE, 737.948	
MH A14 FLOWLINE, 738.544	
MH A15 FLOWLINE, 739.120	
EX MH FLOWLINE, 678.500	



SEWER LEGEND



FLOODPLAIN NOTE

- NO PORTION OF ANY LOT ON THIS PROJECT IS WITHIN AN INDICATED SPECIAL FLOOD HAZARD ZONE ACCORDING TO THE FEMA FIRM MAP NO. 48091C0435 EFFECTIVE DATE 9/2/2009.

CITY OF NEW BRAUNFELS NOTES

- NO VALVES, HYDRANTS, ETC. SHALL BE CONSTRUCTED WITHIN CURBS, SIDEWALKS, OR DRIVEWAYS.
- ALL UTILITIES TO BE CONSTRUCTED PRIOR TO STREETS.
- THIS PROJECT INCLUDES UTILITY INSTALLATIONS GREATER THAN 5- FEET IN DEPTH. DEEP TRENCHES POSE COMPACTION TESTING AND CONSTRUCTION CHALLENGES AND CITY METHODS FOR TESTING AND COMPACTION MAY NOT BE ACHIEVABLE. A UTILITY COMPACTION PLAN WILL BE REQUIRED AND MUST BE SUBMITTED FOR APPROVAL TO CITY PRIOR TO UTILITY INSTALLATION.
- UTILITY TRENCH COMPACTION - ALL UTILITY TRENCH COMPACTION TESTS WITHIN THE STREET PAVEMENT/SIDEWALK SECTION SHALL BE THE RESPONSIBILITY OF THE DEVELOPER'S GEOTECHNICAL ENGINEER. FILL MATERIAL SHALL BE PLACED IN UNIFORM LAYERS NOT TO EXCEED TWELVE INCHES (12") THICK. DETERMINE THE MAXIMUM LIFT THICKNESS BASED ON THE ABILITY OF THE COMPACTION OPERATION AND EQUIPMENT USED TO MEET THE REQUIRED DENSITY. EACH LAYER OF MATERIAL SHALL BE COMPACTED TO A MINIMUM 95% DENSITY AND TESTED FOR DENSITY AND MOISTURE IN ACCORDANCE WITH TEST METHODS TEX-113-E, TEX-114-E, TEX-115-E. THE NUMBER AND LOCATION OF REQUIRED TESTS SHALL BE DETERMINED BY THE GEOTECHNICAL ENGINEER AND APPROVED BY THE CITY OF NEW BRAUNFELS STREET INSPECTOR. AT A MINIMUM, TESTS SHALL BE TAKEN EVERY 200 LF FOR EACH LIFT AND EVERY OTHER SERVICE LINE. UPON COMPLETION OF TESTING THE GEOTECHNICAL ENGINEER SHALL PROVIDE THE CITY OF NEW BRAUNFELS STREET INSPECTOR WITH ALL TESTING DOCUMENTATION AND A CERTIFICATION STATING THAT THE PLACEMENT OF FILL MATERIAL HAS BEEN COMPLETED IN ACCORDANCE WITH THE PLAN. ADDITIONAL DENSITY TESTS MAY BE REQUESTED BY THE CITY OF NEW BRAUNFELS INSPECTOR.

CAUTION!!

CONTRACTOR SHALL BE REQUIRED TO LOCATE ALL PUBLIC OR PRIVATE UTILITIES INCLUDING BUT NOT LIMITING TO: WATER, SEWER, TELEPHONE AND FIBER OPTIC LINES, SITE LIGHTING ELECTRIC, SECONDARY ELECTRIC, PRIMARY ELECTRIC DUCTWORK, LANDSCAPE IRRIGATION FACILITIES, AND GAS LINES. ANY UTILITY CONFLICTS THAT ARISE SHOULD BE COMMUNICATED TO THE ENGINEER IMMEDIATELY AND PRIOR TO CONSTRUCTION. THE CONTRACTOR SHALL CONTACT "TEXAS 811" A MINIMUM OF 48 HOURS PRIOR TO THE START OF CONSTRUCTION. ANY DAMAGE TO EXISTING UTILITIES SHALL BE THE SOLE RESPONSIBILITY OF THE CONTRACTOR AND THE REPAIR SHALL BE AT CONTRACTOR'S SOLE EXPENSE WHETHER THE UTILITY IS SHOWN ON THESE PLANS OR NOT.

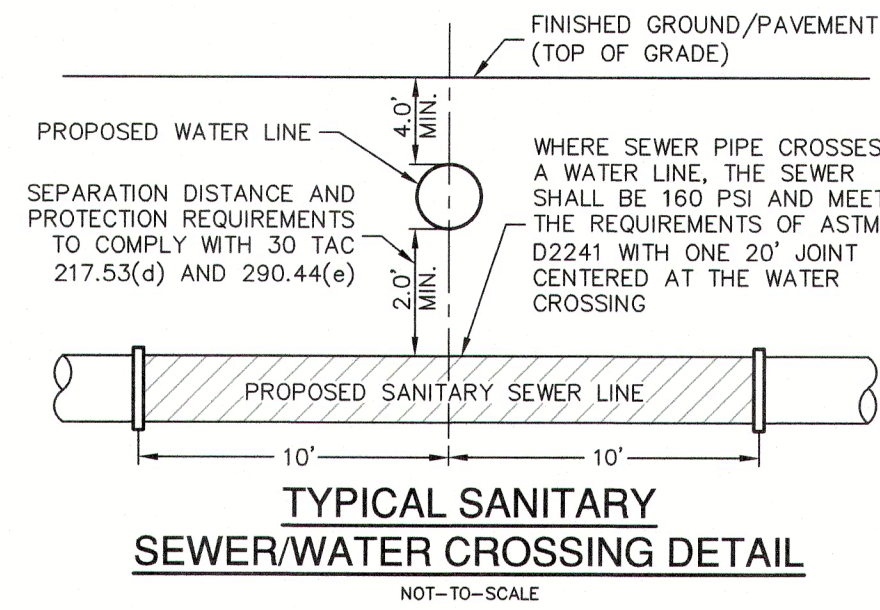
TRENCH EXCAVATION SAFETY PROTECTION:

CONTRACTOR AND/OR CONTRACTOR'S INDEPENDENTLY RETAINED EMPLOYEE OR STRUCTURAL DESIGN/ GEOTECHNICAL/ SAFETY/EQUIPMENT CONSULTANT, IF ANY, SHALL REVIEW THESE PLANS AND ANY AVAILABLE GEOTECHNICAL INFORMATION AND THE ANTICIPATED INSTALLATION SITES WITHIN THE PROJECT WORK AREA IN ORDER TO IMPLEMENT CONTRACTOR'S TRENCH EXCAVATION SAFETY PROTECTION SYSTEMS, PROGRAMS AND /OR PROCEDURES FOR THE PROJECT DESCRIBED IN THE CONTRACT DOCUMENTS. THE CONTRACTOR'S IMPLEMENTATION OF THESE SYSTEMS, PROGRAMS AND/OR PROCEDURES SHALL PROVIDE FOR ADEQUATE TRENCH EXCAVATION SAFETY PROTECTION THAT COMPLY WITH AS A MINIMUM, OSHA STANDARDS FOR TRENCH EXCAVATIONS. SPECIFICALLY, CONTRACTOR AND/OR CONTRACTOR'S INDEPENDENTLY RETAINED EMPLOYEE OR SAFETY CONSULTANT SHALL IMPLEMENT A TRENCH SAFETY PROGRAM IN ACCORDANCE WITH OSHA STANDARDS GOVERNING THE PRESENCE AND ACTIVITIES OF INDIVIDUALS WORKING IN AND AROUND TRENCH EXCAVATION.

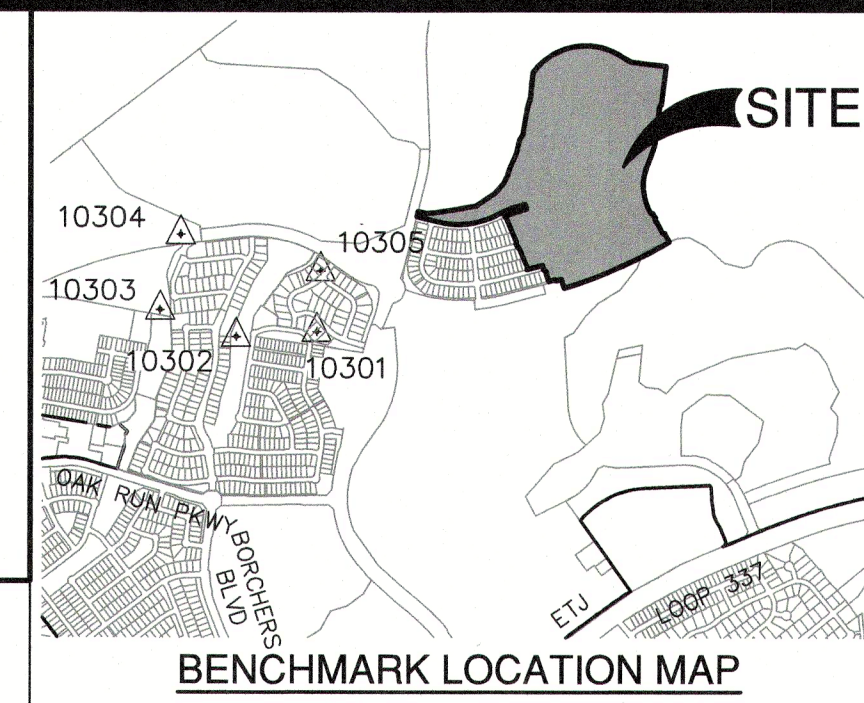
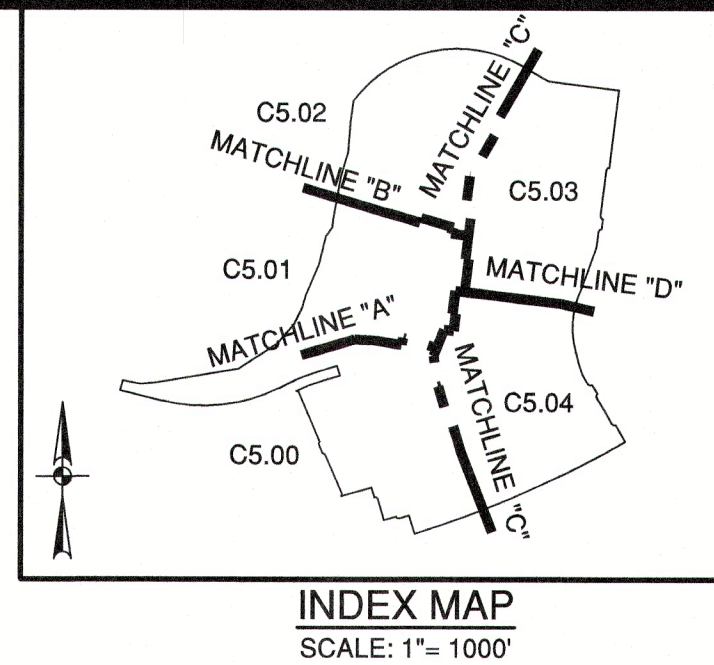
PAPE-DAWSON ENGINEERS
 1672 INDEPENDENCE DR. STE 102 | NEW BRAUNFELS, TX 78132 | 830.652.5693
 TEXAS ENGINEERING FIRM #479 | TEXAS SURVEYING FIRM #1008980

VERAMENDI PRECINCT 18 UNIT 1
 NEW BRAUNFELS, TEXAS
 OVERALL SANITARY SEWER PLAN

PLAT NO.	
JOB NO.	30001-66
DATE	07-03-2023
DESIGNER	GDL
CHECKED	GJ
DRAWN	BH
SHEET	C5.00

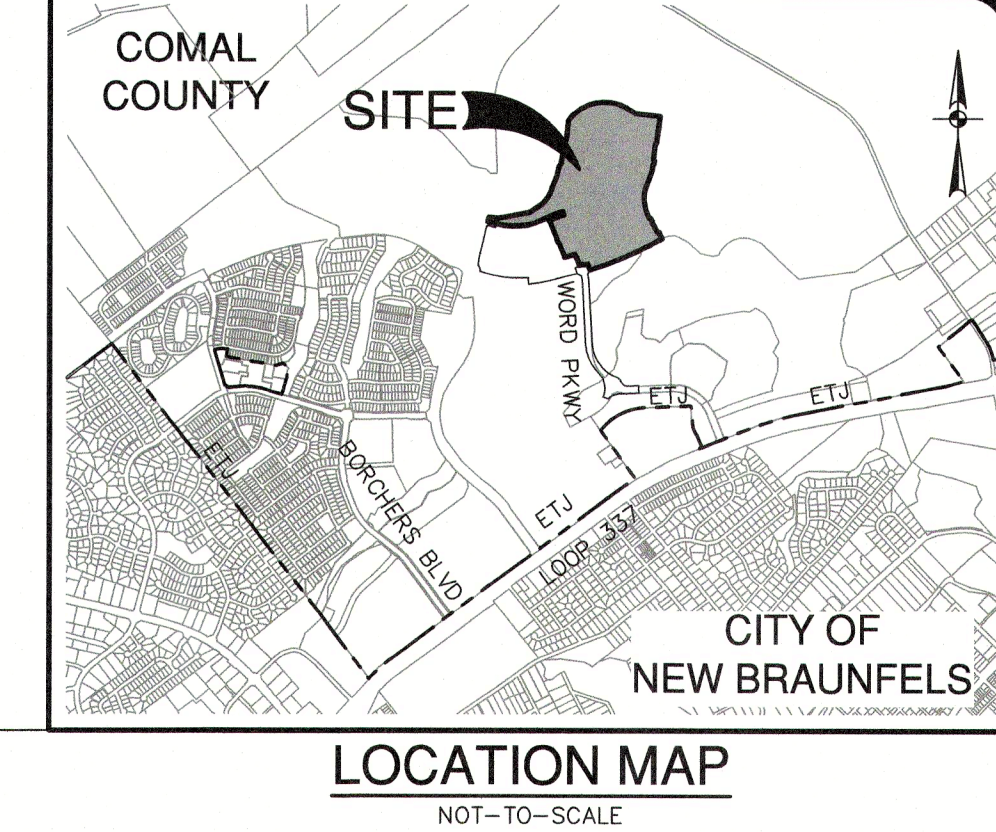


WASTEWATER (NBU JOB NO. WW-226996)		
ITEM	UNIT	QUANTITY
8" SANITARY SEWER PIPE	LF	12,477
6" WASTEWATER SERVICE	EA	215
48" MANHOLES	EA	62

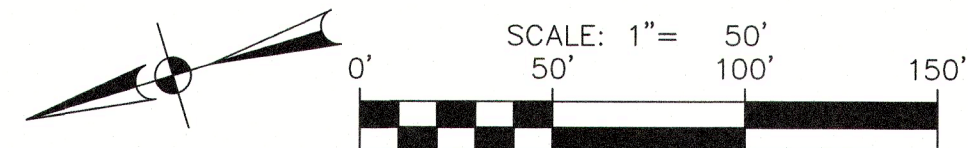
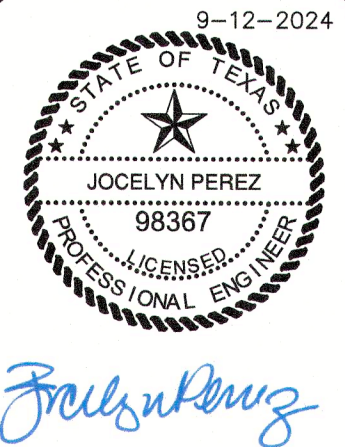


BENCHMARKS

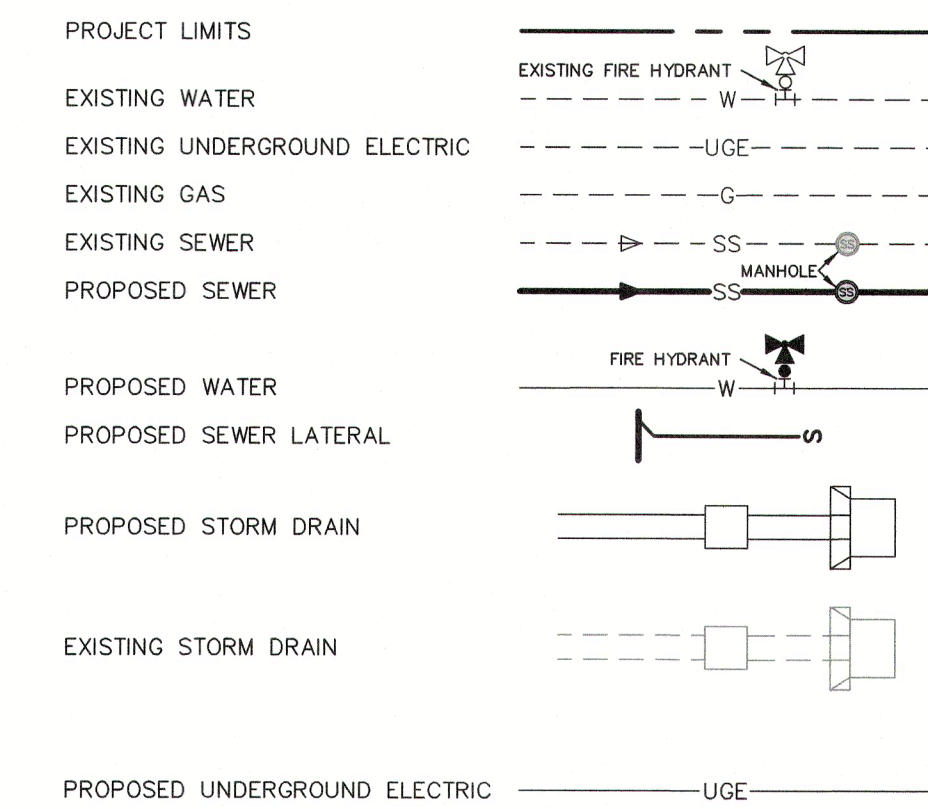
HORIZONTAL AND VERTICAL CONTROL POINTS				
Point #	Northing	Easting	Elevation	Full Description
10300	13815253.76	2237967.00	787.38	SET I.R. REDCAP (TRAV)
10301	13816937.43	2237678.90	782.13	SET I.R. REDCAP (TRAV)
10302	13816887.26	2236841.89	758.22	SET I.R. REDCAP (TRAV)
10303	13817166.65	2236050.01	763.76	SET MAG NAIL (TRAV)
10304	13817949.35	2236263.15	751.35	SET MAG NAIL (TRAV)
10305	13817569.79	2237717.86	753.14	SET MAG NAIL (TRAV)



NO.	REVISION	DATE



SEWER LEGEND



FLOODPLAIN NOTE

- NO PORTION OF ANY LOT ON THIS PROJECT IS WITHIN AN INDICATED SPECIAL FLOOD HAZARD ZONE ACCORDING TO THE FEMA FIRM MAP NO. 48091C0435F EFFECTIVE DATE 9/2/2009.

CITY OF NEW BRAUNFELS NOTES

- NO VALVES, HYDRANTS, ETC. SHALL BE CONSTRUCTED WITHIN CURBS, SIDEWALKS, OR DRIVEWAYS.
- ALL UTILITIES TO BE CONSTRUCTED PRIOR TO STREETS.
- THIS PROJECT INCLUDES UTILITY INSTALLATIONS GREATER THAN 5- FEET IN DEPTH. DEEP TRENCHES POSE COMPACTION TESTING AND CONSTRUCTION CHALLENGES AND CITY METHODS FOR TESTING AND COMPACTION MAY NOT BE ACHIEVABLE. A UTILITY COMPACTION PLAN WILL BE REQUIRED AND MUST BE SUBMITTED FOR APPROVAL TO CITY PRIOR TO UTILITY INSTALLATION.
- UTILITY TRENCH COMPACTION - ALL UTILITY TRENCH COMPACTION TESTS WITHIN THE STREET PAVEMENT/SIDEWALK SECTION SHALL BE THE RESPONSIBILITY OF THE DEVELOPER'S GEOTECHNICAL ENGINEER. FILL MATERIAL SHALL BE PLACED IN UNIFORM LAYERS NOT TO EXCEED TWELVE INCHES (12") LOOSE. DETERMINE THE MAXIMUM LIFT THICKNESS BASED ON THE ABILITY OF THE COMPACTION OPERATION AND EQUIPMENT USED TO MEET THE REQUIRED DENSITY. EACH LAYER OF MATERIAL SHALL BE COMPACTED TO A MINIMUM 95% DENSITY AND TESTED FOR DENSITY AND MOISTURE IN ACCORDANCE WITH TEST METHODS TEX-113-E, TEX-114-E, TEX-115-E. THE NUMBER AND LOCATION OF REQUIRED TESTS SHALL BE DETERMINED BY THE GEOTECHNICAL ENGINEER AND APPROVED BY THE CITY OF NEW BRAUNFELS STREET INSPECTOR. AT A MINIMUM, TESTS SHALL BE TAKEN EVERY 200 LF FOR EACH LIFT AND EVERY OTHER SERVICE LINE. UPON COMPLETION OF TESTING THE GEOTECHNICAL ENGINEER SHALL PROVIDE THE CITY OF NEW BRAUNFELS STREET INSPECTOR WITH ALL TESTING DOCUMENTATION AND A CERTIFICATION STATING THAT THE PLACEMENT OF FILL MATERIAL HAS BEEN COMPLETED IN ACCORDANCE WITH THE PLANS. ADDITIONAL DENSITY TESTS MAY BE REQUESTED BY THE CITY OF NEW BRAUNFELS INSPECTOR.

CAUTION!!

CONTRACTOR SHALL BE REQUIRED TO LOCATE ALL PUBLIC OR PRIVATE UTILITIES INCLUDING BUT NOT LIMITING TO: WATER, SEWER, TELEPHONE AND FIBER OPTIC LINES, SITE LIGHTING ELECTRIC, SECONDARY ELECTRIC, PRIMARY ELECTRICAL DUCTBANKS, LANDSCAPE IRRIGATION FACILITIES, AND GAS LINES. ANY UTILITY CONFLICTS THAT ARISE SHOULD BE COMMUNICATED TO THE ENGINEER IMMEDIATELY AND PRIOR TO CONSTRUCTION. THE CONTRACTOR SHALL CONTACT "TEXAS 811" A MINIMUM OF 48 HOURS PRIOR TO THE START OF CONSTRUCTION. ANY DAMAGE TO EXISTING UTILITIES SHALL BE THE SOLE RESPONSIBILITY OF THE CONTRACTOR AND THE REPAIR SHALL BE AT CONTRACTOR'S SOLE EXPENSE WHETHER THE UTILITY IS SHOWN ON THESE PLANS OR NOT.

TRENCH EXCAVATION SAFETY PROTECTION:

CONTRACTOR AND/OR CONTRACTOR'S INDEPENDENTLY RETAINED EMPLOYEE OR STRUCTURAL DESIGN/ GEOTECHNICAL/ SAFETY/EQUIPMENT CONSULTANT, IF ANY, SHALL REVIEW THESE PLANS AND ANY AVAILABLE GEOTECHNICAL INFORMATION AND THE ANTICIPATED INSTALLATION SITES WITHIN THE PROJECT WORK AREA IN ORDER TO IMPLEMENT CONTRACTOR'S TRENCH EXCAVATION SAFETY PROTECTION SYSTEMS, PROGRAMS AND/OR PROCEDURES FOR THE PROJECT DESCRIBED IN THE CONTRACT DOCUMENTS. THE CONTRACTOR'S IMPLEMENTATION OF THESE SYSTEMS, PROGRAMS AND/OR PROCEDURES SHALL PROVIDE FOR ADEQUATE TRENCH EXCAVATION SAFETY PROTECTION THAT COMPLY WITH AS A MINIMUM, OSHA STANDARDS FOR TRENCH EXCAVATIONS. SPECIFICALLY, CONTRACTOR AND/OR CONTRACTOR'S INDEPENDENTLY RETAINED EMPLOYEE OR SAFETY CONSULTANT SHALL IMPLEMENT A TRENCH SAFETY PROGRAM IN ACCORDANCE WITH OSHA STANDARDS GOVERNING THE PRESENCE AND ACTIVITIES OF INDIVIDUALS WORKING IN AND AROUND TRENCH EXCAVATION.

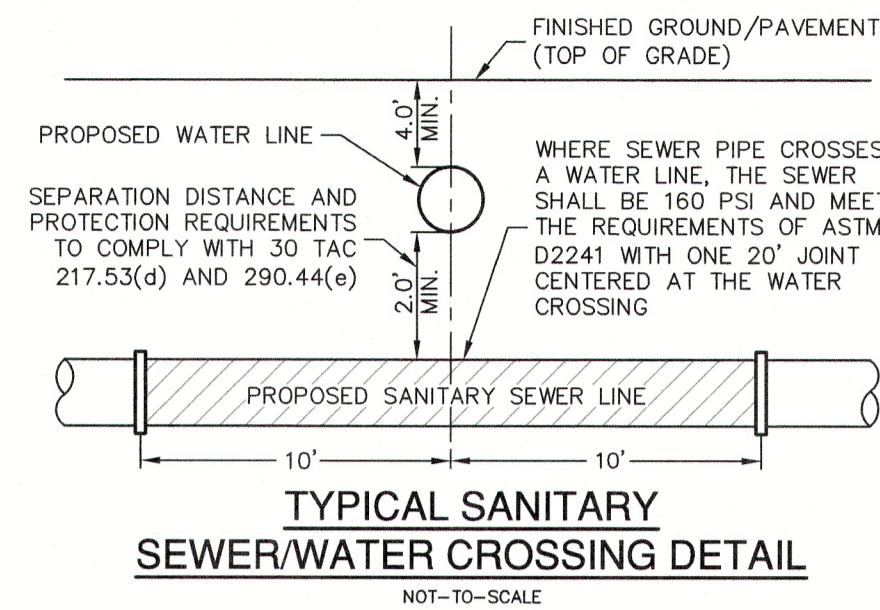
PAPE-DAWSON ENGINEERS
1672 INDEPENDENCE DR. STE 102 | NEW BRAUNFELS, TX 78132 | 830.632.5583
TEXAS ENGINEERING FIRM #479 | TEXAS SURVEYING FIRM #1008890

VERAMENDI PRECINCT 18 UNIT 1
NEW BRAUNFELS, TEXAS

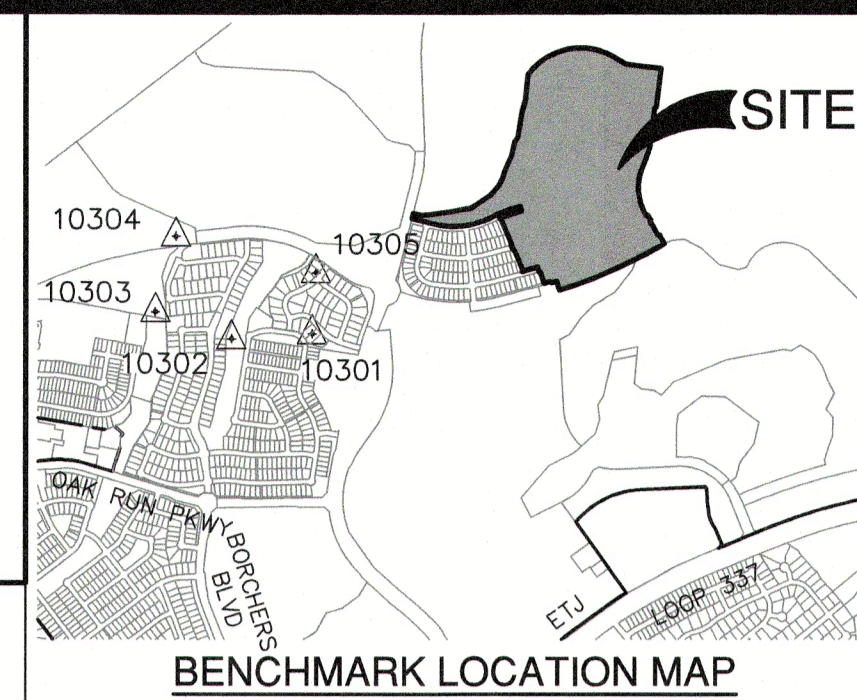
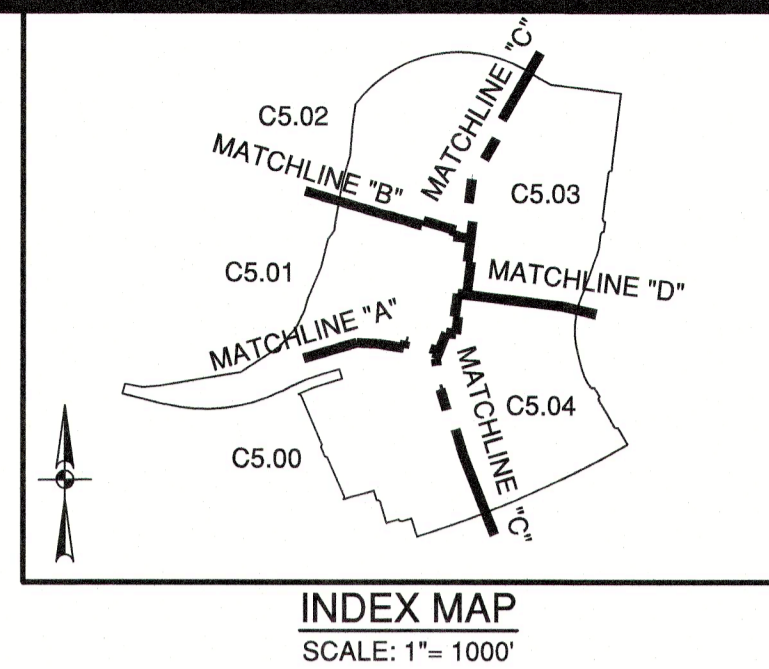
OVERALL SANITARY SEWER PLAN

PLAT NO.	30001-66
JOB NO.	30001-66
DATE	07-03-2023
DESIGNER	GDL
CHECKED	AL
DRAWN	BH
SHEET	C5.01

FOR PERMIT

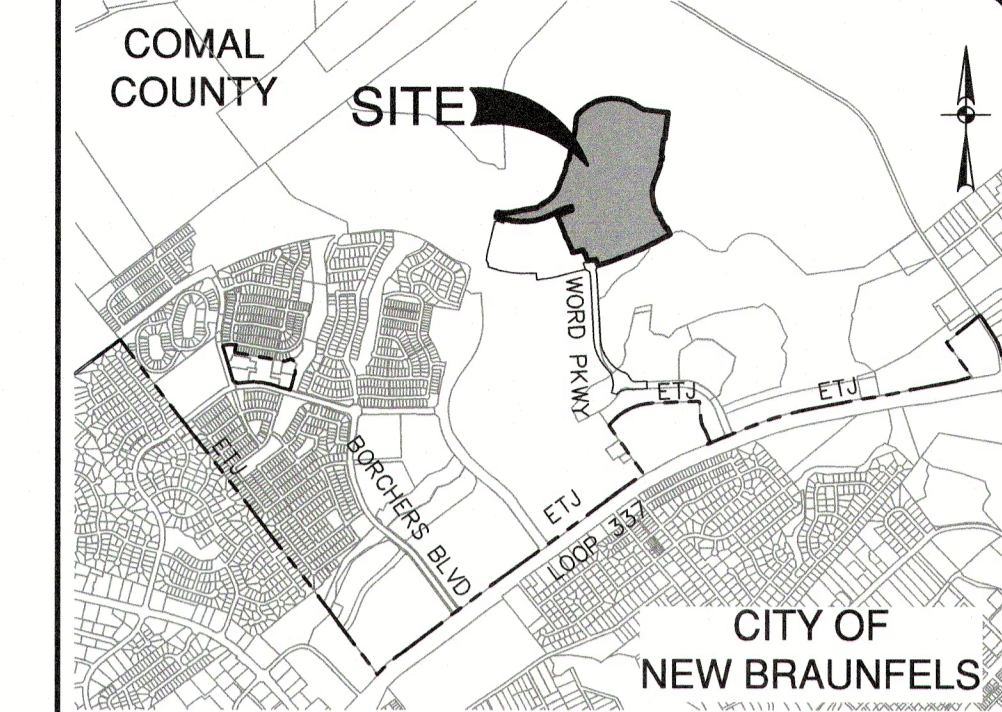


WASTEWATER (NBU JOB NO. WW-226996)		
ITEM	UNIT	QUANTITY
8" SANITARY SEWER PIPE	LF	12,477
LUES	EA	215
6" WASTEWATER SERVICE	EA	215
48" MANHOLES	EA	62

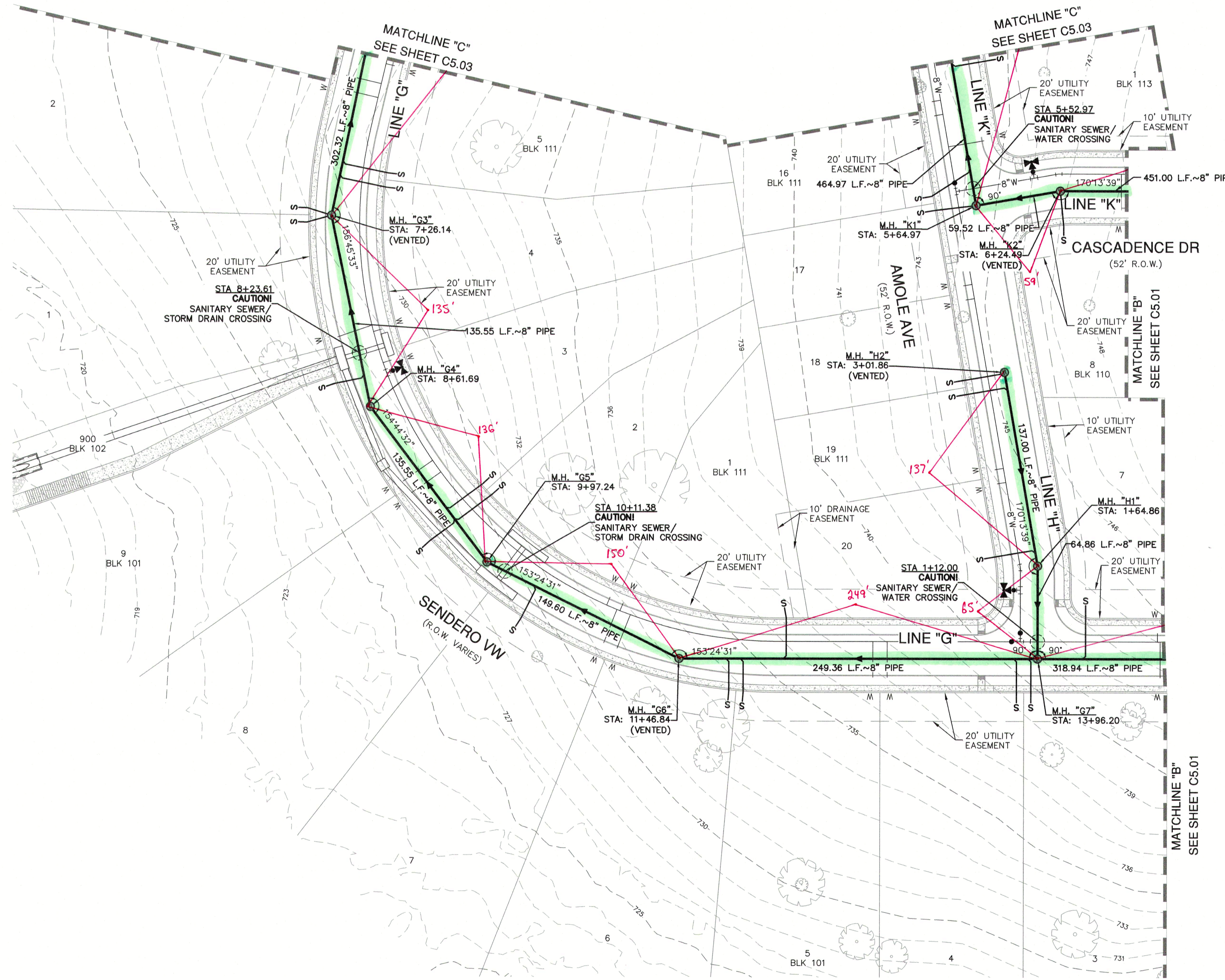
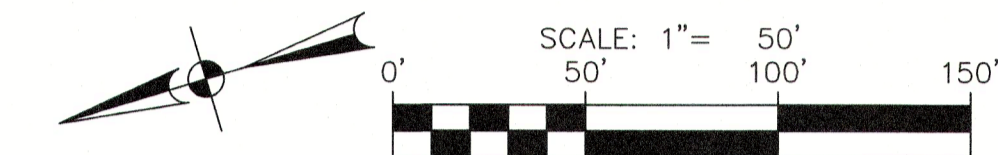


BENCHMARKS

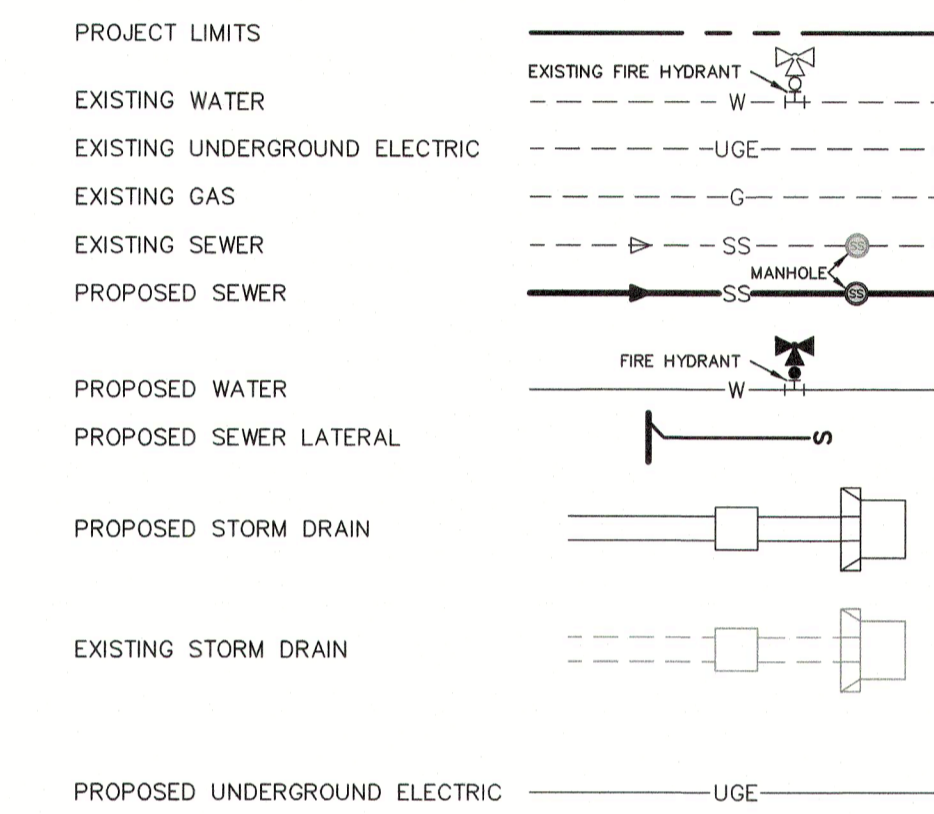
HORIZONTAL AND VERTICAL CONTROL POINTS				
Point #	Northing	Easting	Elevation	Full Description
10300	13815253.76	2237967.00	787.38	SET I.R. REDCAP (TRAV)
10301	13816937.43	2237678.90	782.13	SET I.R. REDCAP (TRAV)
10302	13816887.26	2236841.89	758.22	SET I.R. REDCAP (TRAV)
10303	13817166.65	2236050.01	763.76	SET MAG NAIL (TRAV)
10304	13817949.35	2236263.15	751.35	SET MAG NAIL (TRAV)
10305	13817569.79	2237717.86	753.14	SET MAG NAIL (TRAV)



LOCATION MAP
NOT-TO-SCALE



SEWER LEGEND



FLOODPLAIN NOTE

1. NO PORTION OF ANY LOT ON THIS PROJECT IS WITHIN AN INDICATED SPECIAL FLOOD HAZARD ZONE ACCORDING TO THE FEMA FIRM MAP NO. 48091C0435F EFFECTIVE DATE 9/2/2009.

CITY OF NEW BRAUNFELS NOTES

- NO VALVES, HYDRANTS, ETC. SHALL BE CONSTRUCTED WITHIN CURBS, SIDEWALKS, OR DRIVEWAYS.
- ALL UTILITIES TO BE CONSTRUCTED PRIOR TO STREETS.
- THIS PROJECT INCLUDES UTILITY INSTALLATIONS GREATER THAN 5- FEET IN DEPTH. DEEP TRENCHES POSE COMPACTION TESTING AND CONSTRUCTION CHALLENGES AND CITY METHODS FOR TESTING AND COMPACTION MAY NOT BE ACHIEVABLE. A UTILITY COMPACTION PLAN WILL BE REQUIRED AND MUST BE SUBMITTED FOR APPROVAL TO CITY PRIOR TO UTILITY INSTALLATION.
- UTILITY TRENCH COMPACTION - ALL UTILITY TRENCH COMPACTION TESTS WITHIN THE STREET PAVEMENT/SIDEWALK SECTION SHALL BE THE RESPONSIBILITY OF THE DEVELOPER'S GEOTECHNICAL ENGINEER. FILL MATERIAL SHALL BE PLACED IN UNIFORM LAYERS NOT TO EXCEED TWELVE INCHES (12") THICK. DETERMINE THE MAXIMUM LIFT THICKNESS BASED ON THE ABILITY OF THE COMPACTION OPERATION AND EQUIPMENT USED TO MEET THE REQUIRED DENSITY. EACH LAYER OF MATERIAL SHALL BE COMPACTED TO A MINIMUM 95% DENSITY AND TESTED FOR DENSITY AND MOISTURE IN ACCORDANCE WITH TEST METHODS TEX-113-E, TEX-114-E, TEX-115-E. THE NUMBER AND LOCATION OF REQUIRED TESTS SHALL BE DETERMINED BY THE GEOTECHNICAL ENGINEER AND APPROVED BY THE CITY OF NEW BRAUNFELS STREET INSPECTOR WITH ALL TESTING DOCUMENTATION AND A CERTIFICATION STATING THAT THE PLACEMENT OF FILL MATERIAL HAS BEEN COMPLETED IN ACCORDANCE WITH THE PLANS. ADDITIONAL DENSITY TESTS MAY BE REQUESTED BY THE CITY OF NEW BRAUNFELS INSPECTOR.

CAUTION!!

CONTRACTOR SHALL BE REQUIRED TO LOCATE ALL PUBLIC OR PRIVATE UTILITIES INCLUDING BUT NOT LIMITING TO: WATER, SEWER, TELEPHONE AND FIBER OPTIC LINES, SITE LIGHTING ELECTRIC, SECONDARY ELECTRIC, PRIMARY ELECTRICAL DUCTS, IRRIGATION FACILITIES, AND GAS LINES. ANY UTILITY CONFLICTS THAT ARISE SHOULD BE COMMUNICATED TO THE ENGINEER IMMEDIATELY AND PRIOR TO CONSTRUCTION. THE CONTRACTOR SHALL CONTACT "TEXAS 811" A MINIMUM OF 48 HOURS PRIOR TO THE START OF CONSTRUCTION. ANY DAMAGE TO EXISTING UTILITIES SHALL BE THE SOLE RESPONSIBILITY OF THE CONTRACTOR AND THE REPAIR SHALL BE AT CONTRACTOR'S SOLE EXPENSE WHETHER THE UTILITY IS SHOWN ON THESE PLANS OR NOT.

TRENCH EXCAVATION SAFETY PROTECTION:

CONTRACTOR AND/OR CONTRACTOR'S INDEPENDENTLY RETAINED EMPLOYEE OR STRUCTURAL DESIGN/ GEOTECHNICAL/ SAFETY/EQUIPMENT CONSULTANT, IF ANY, SHALL REVIEW THESE PLANS AND ANY AVAILABLE GEOTECHNICAL INFORMATION AND THE ANTICIPATED INSTALLATION SITES WITHIN THE PROJECT WORK AREA IN ORDER TO IMPLEMENT CONTRACTOR'S TRENCH EXCAVATION SAFETY PROTECTION SYSTEMS, PROGRAMS AND/OR PROCEDURES FOR THE PROJECT DESCRIBED IN THE CONTRACT DOCUMENTS. THE CONTRACTOR'S IMPLEMENTATION OF THESE SYSTEMS, PROGRAMS AND/OR PROCEDURES SHALL PROVIDE FOR ADEQUATE TRENCH EXCAVATION SAFETY PROTECTION THAT COMPLY WITH AS A MINIMUM, OSHA STANDARDS FOR TRENCH EXCAVATIONS. SPECIFICALLY, CONTRACTOR AND/OR CONTRACTOR'S INDEPENDENTLY RETAINED EMPLOYEE OR SAFETY CONSULTANT SHALL IMPLEMENT A TRENCH SAFETY PROGRAM IN ACCORDANCE WITH OSHA STANDARDS GOVERNING THE PRESENCE AND ACTIVITIES OF INDIVIDUALS WORKING IN AND AROUND TRENCH EXCAVATION.

DATE: _____

NO. REVISION: _____

Jocelyn Perez

PAPE-DAWSON ENGINEERS

1672 INDEPENDENCE DR., STE 102 | NEW BRAUNFELS, TX 78132 | 830.652.5633
TEXAS ENGINEERING FIRM #470 | TEXAS SURVEYING FIRM #1008890

VERAMENDI PRECINCT 18 UNIT 1
NEW BRAUNFELS, TEXAS

OVERALL SANITARY SEWER PLAN

PLAT NO. _____

JOB NO. 30001-66

DATE 07-03-2023

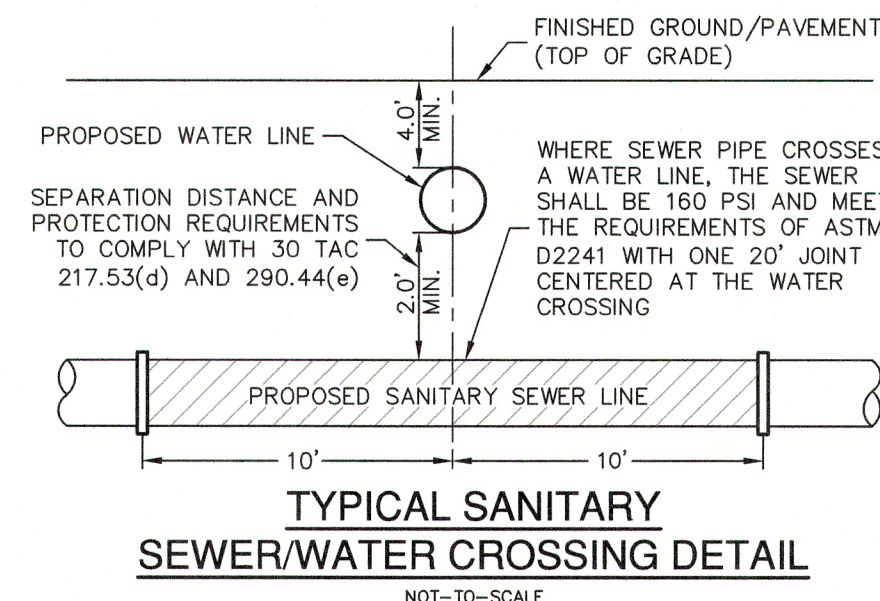
DESIGNER GDL

CHECKED *GL* DRAWN BH

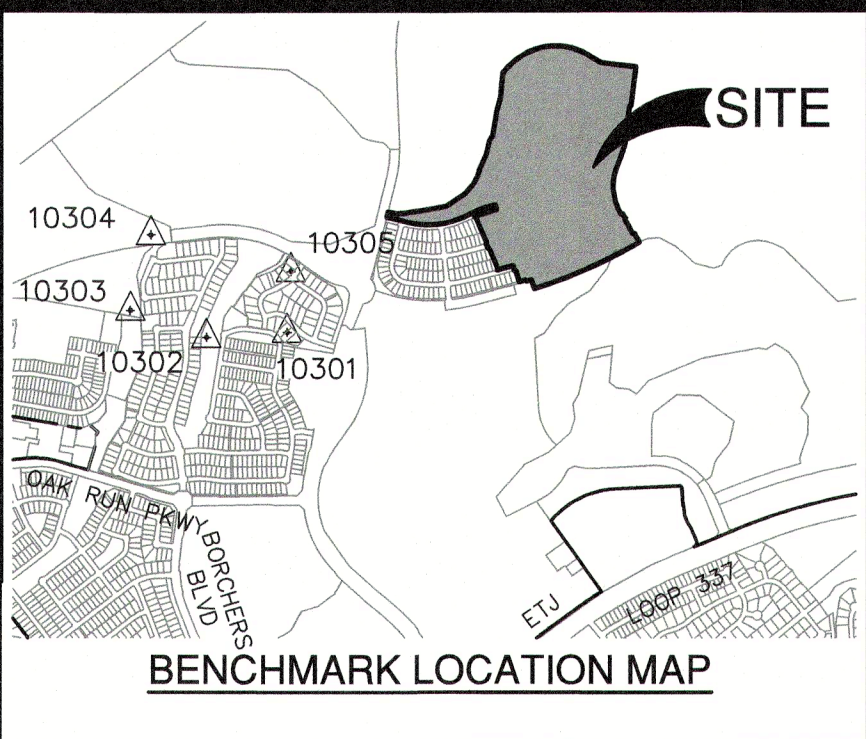
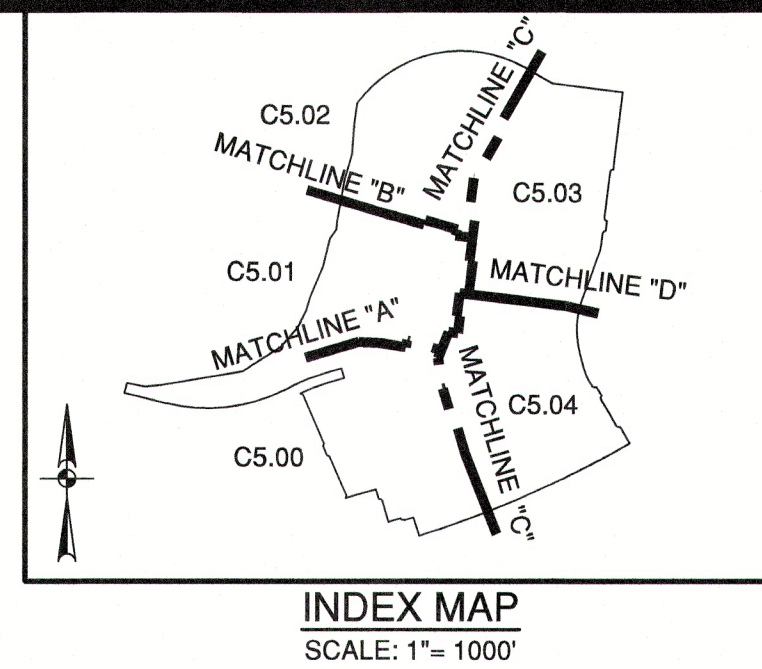
SHEET **C5.02**

Date: Sep 11, 2024, 5:13pm, User ID: jhroulwh
File: C:\Users\LOCAL~1\Temp\MapPublish_824601\SSDA-30001-66.dwg

FOR PERMIT

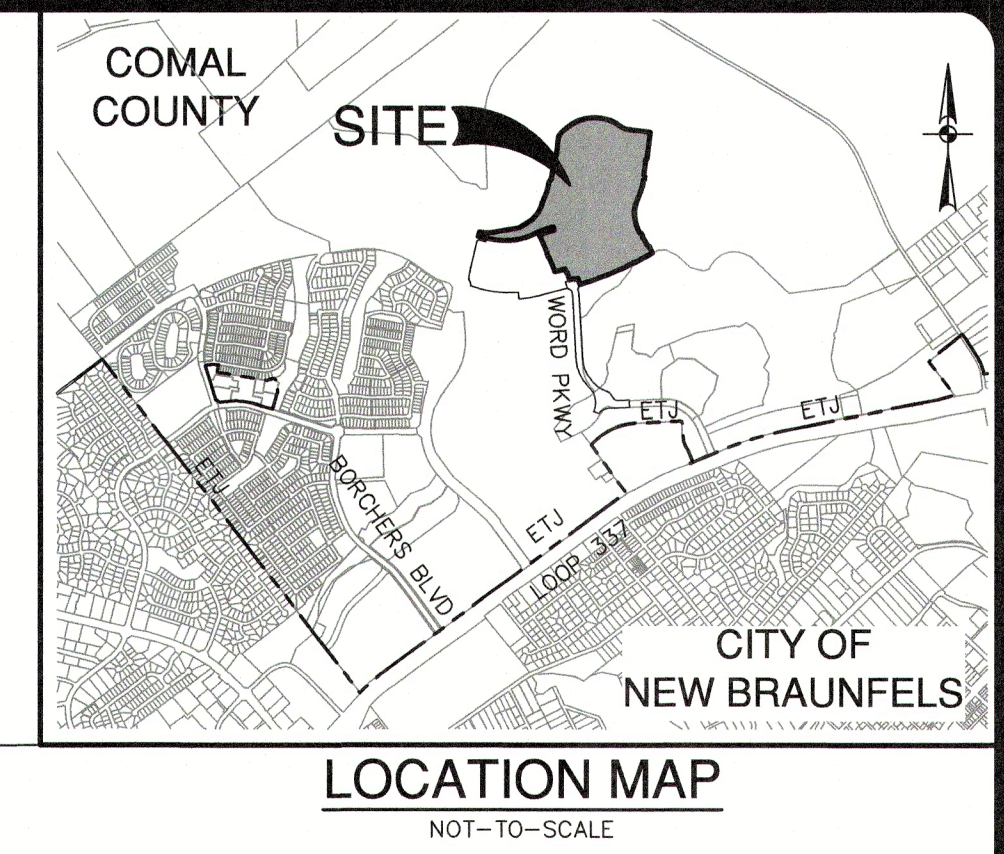


ITEM	UNIT	QUANTITY
8" SANITARY SEWER PIPE	LF	12,477
6" WASTEWATER SERVICE LUES	EA	215
48" MANHOLES	EA	62



BENCHMARKS

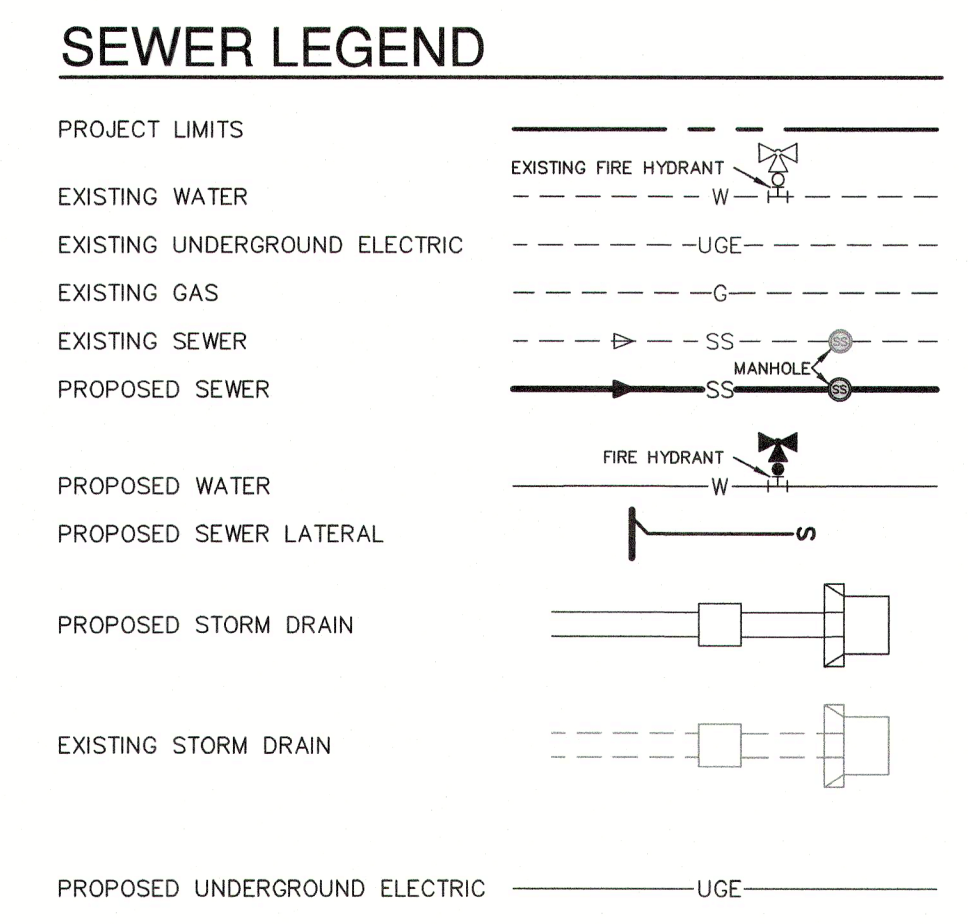
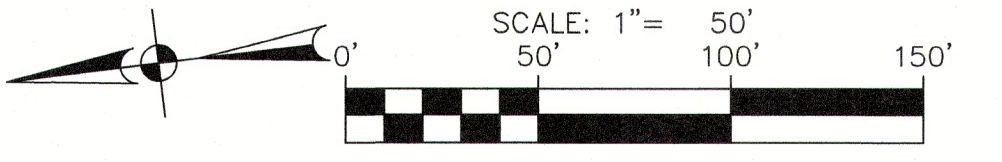
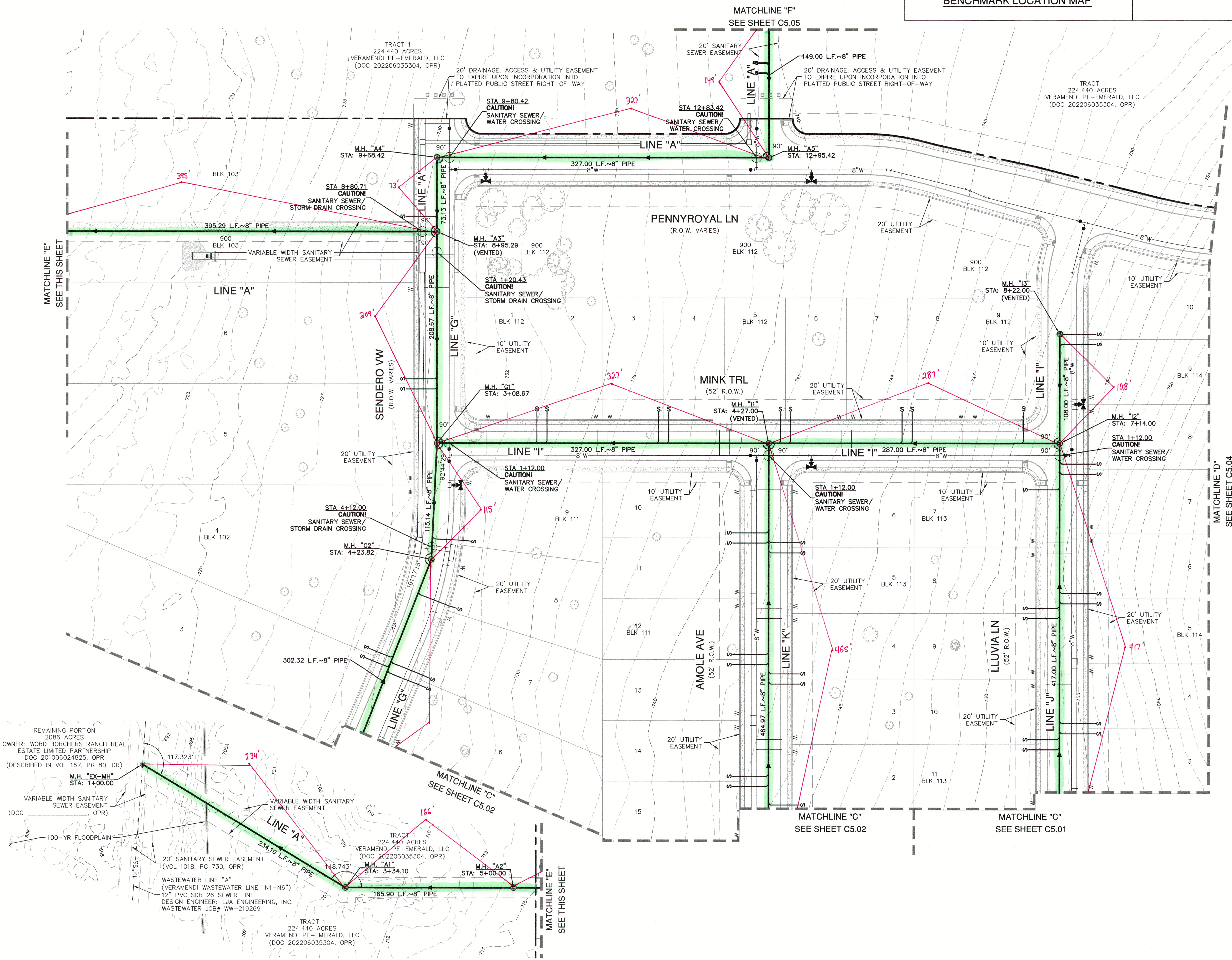
Point #	Northing	Easting	Elevation	Full Description
10300	13815253.76	2237967.00	787.38	SET I.R. REDCAP (TRAV)
10301	13816937.43	2237678.90	782.13	SET I.R. REDCAP (TRAV)
10302	13816887.26	2238641.89	758.22	SET I.R. REDCAP (TRAV)
10303	13817166.65	2236050.01	763.76	SET MAG NAIL (TRAV)
10304	13817949.35	2238263.15	751.35	SET MAG NAIL (TRAV)
10305	13817569.78	2237717.86	753.14	SET MAG NAIL (TRAV)



DATE: _____

NO. REVISION: _____

9-12-2024



FLOODPLAIN NOTE

1. NO PORTION OF ANY LOT ON THIS PROJECT IS WITHIN AN INDICATED SPECIAL FLOOD HAZARD ZONE ACCORDING TO THE FEMA FIRM MAP NO. 48091C0435F EFFECTIVE DATE 9/2/2009.

CITY OF NEW BRAUNFELS NOTES

- NO VALVES, HYDRANTS, ETC. SHALL BE CONSTRUCTED WITHIN CURBS, SIDEWALKS, OR DRIVEWAYS.
- ALL UTILITIES TO BE CONSTRUCTED PRIOR TO STREETS.
- THIS PROJECT INCLUDES UTILITY INSTALLATIONS GREATER THAN 5- FEET IN DEPTH. DEEP TRENCHES POSE COMPACTION TESTING AND CONSTRUCTION CHALLENGES AND CITY METHODS FOR TESTING AND COMPACTION MAY NOT BE ACHIEVABLE. A UTILITY COMPACTION PLAN WILL BE REQUIRED AND MUST BE SUBMITTED FOR APPROVAL TO CITY PRIOR TO UTILITY INSTALLATION.
- UTILITY TRENCH COMPACTION - ALL UTILITY TRENCH COMPACTION TESTS WITHIN THE STREET PAVEMENT/SIDEWALK SECTION SHALL BE THE RESPONSIBILITY OF THE DEVELOPER'S GEOTECHNICAL ENGINEER. FILL MATERIAL SHALL BE PLACED IN UNIFORM LAYERS NOT TO EXCEED TWELVE INCHES (12") LOOSE. DETERMINE THE MAXIMUM LIFT THICKNESS BASED ON THE ABILITY OF THE COMPACTION OPERATION AND EQUIPMENT USED TO MEET THE REQUIRED DENSITY. EACH LAYER OF MATERIAL SHALL BE COMPACTED TO A MINIMUM 95% DENSITY AND TESTED FOR DENSITY AND MOISTURE IN ACCORDANCE WITH TEST METHODS TEX-113-E, TEX-114-E, TEX-115-E. THE NUMBER AND LOCATION OF REQUIRED TESTS SHALL BE DETERMINED BY THE GEOTECHNICAL ENGINEER AND APPROVED BY THE CITY OF NEW BRAUNFELS STREET INSPECTOR. AT A MINIMUM, TESTS SHALL BE TAKEN EVERY 200 LF FOR EACH LIFT AND EVERY OTHER SERVICE LINE. UPON COMPLETION OF TESTING, THE GEOTECHNICAL ENGINEER SHALL PROVIDE THE CITY OF NEW BRAUNFELS STREET INSPECTOR WITH ALL TESTING DOCUMENTATION AND A CERTIFICATION STATING THAT THE PLACEMENT OF FILL MATERIAL HAS BEEN COMPLETED IN ACCORDANCE WITH THE PLANS. ADDITIONAL DENSITY TESTS MAY BE REQUESTED BY THE CITY OF NEW BRAUNFELS INSPECTOR.

CAUTION!!

CONTRACTOR SHALL BE REQUIRED TO LOCATE ALL PUBLIC OR PRIVATE UTILITIES INCLUDING BUT NOT LIMITING TO: WATER, SEWER, TELEPHONE AND FIBER OPTIC LINES, SITE LIGHTING ELECTRIC, SECONDARY ELECTRIC, PRIMARY ELECTRICAL DUCTBANKS, LANDSCAPE IRRIGATION FACILITIES, AND ANY OTHER UTILITY CONFLICTS THAT ARISE SHOULD BE COMMUNICATED TO THE ENGINEER IMMEDIATELY AND PRIOR TO CONSTRUCTION. THE CONTRACTOR SHALL CONTACT "TEXAS 811" A MINIMUM OF 48 HOURS PRIOR TO THE START OF CONSTRUCTION. ANY DAMAGE TO EXISTING UTILITIES SHALL BE THE SOLE RESPONSIBILITY OF THE CONTRACTOR AND THE REPAIR SHALL BE AT CONTRACTOR'S SOLE EXPENSE WHETHER THE UTILITY IS SHOWN ON THESE PLANS OR NOT.

TRENCH EXCAVATION SAFETY PROTECTION:

CONTRACTOR AND/OR CONTRACTOR'S INDEPENDENTLY RETAINED EMPLOYEE OR STRUCTURAL DESIGN/ GEOTECHNICAL/ SAFETY/EQUIPMENT CONSULTANT, IF ANY, SHALL REVIEW THESE PLANS AND ANY AVAILABLE GEOTECHNICAL INFORMATION AND THE ANTICIPATED INSTALLATION SITES WITHIN THE PROJECT WORK AREA IN ORDER TO IMPLEMENT CONTRACTOR'S TRENCH EXCAVATION SAFETY PROTECTION SYSTEMS, PROGRAMS AND/OR PROCEDURES FOR THE PROJECT DESCRIBED IN THE CONTRACT DOCUMENTS. THE CONTRACTOR'S IMPLEMENTATION OF THESE SYSTEMS, PROGRAMS AND/OR PROCEDURES SHALL PROVIDE FOR ADEQUATE TRENCH EXCAVATION SAFETY PROTECTION THAT COMPLY WITH AS A MINIMUM, OSHA STANDARDS FOR TRENCH EXCAVATIONS. SPECIFICALLY, CONTRACTOR AND/OR CONTRACTOR'S INDEPENDENTLY RETAINED EMPLOYEE OR SAFETY CONSULTANT SHALL IMPLEMENT A TRENCH SAFETY PROGRAM IN ACCORDANCE WITH OSHA STANDARDS GOVERNING THE PRESENCE AND ACTIVITIES OF INDIVIDUALS WORKING IN AND AROUND TRENCH EXCAVATION.

Date: Sep 11, 2024, 5:13pm User ID: jperquel
 File: C:\Users\JGALLAN\OneDrive\Documents\SSDA-30001-66.dwg

PAPE-DAWSON ENGINEERS

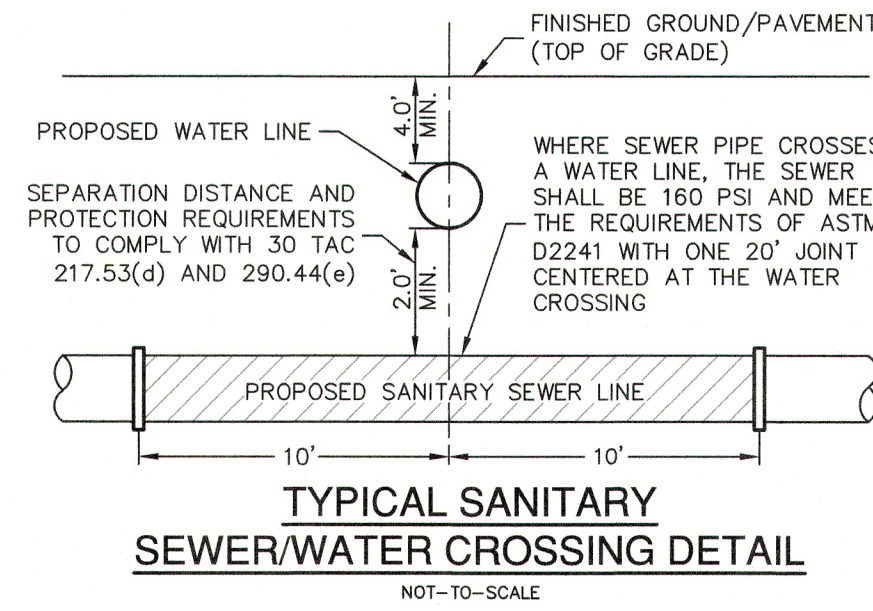
1675 INDEPENDENCE DR. STE 102 | NEW BRAUNFELS, TX 78132 | 800.832.6593
 TEXAS ENGINEERING FIRM #470 | TEXAS SURVEYING FIRM #1008800

VERAMENDI PRECINCT 18 UNIT 1
 NEW BRAUNFELS, TEXAS

OVERALL SANITARY SEWER PLAN

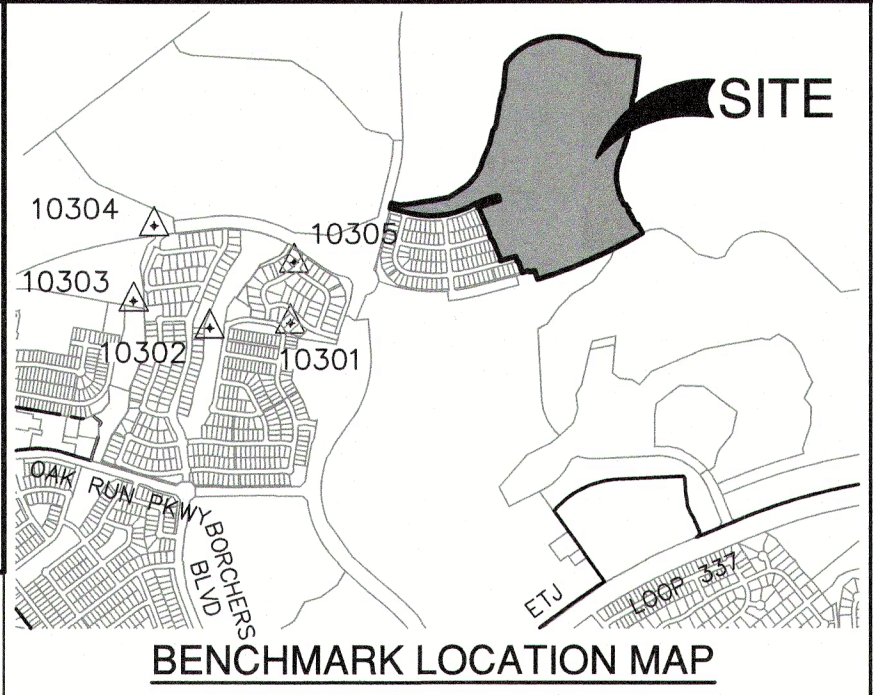
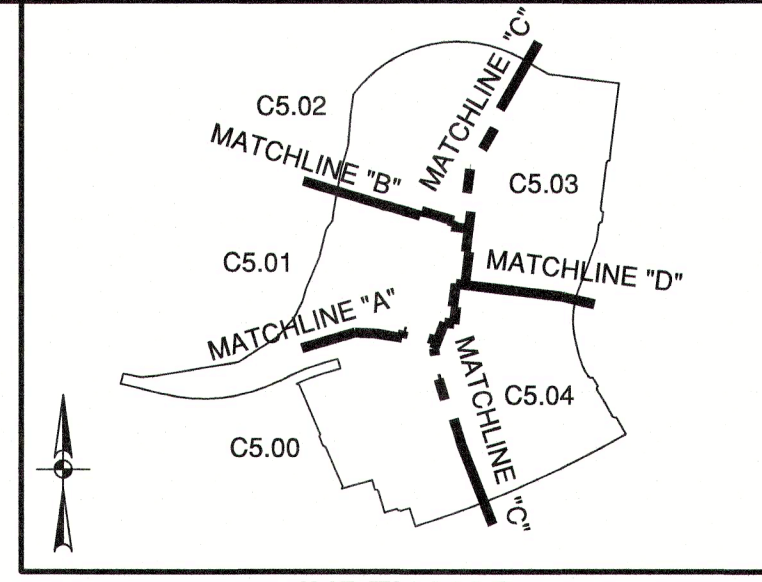
PLAT NO.	30001-66
JOB NO.	07-03-2023
DATE	GDL
DESIGNER	CHKD BH
CHECKED	DRWN BH
SHEET	C5.03

FOR PERMIT



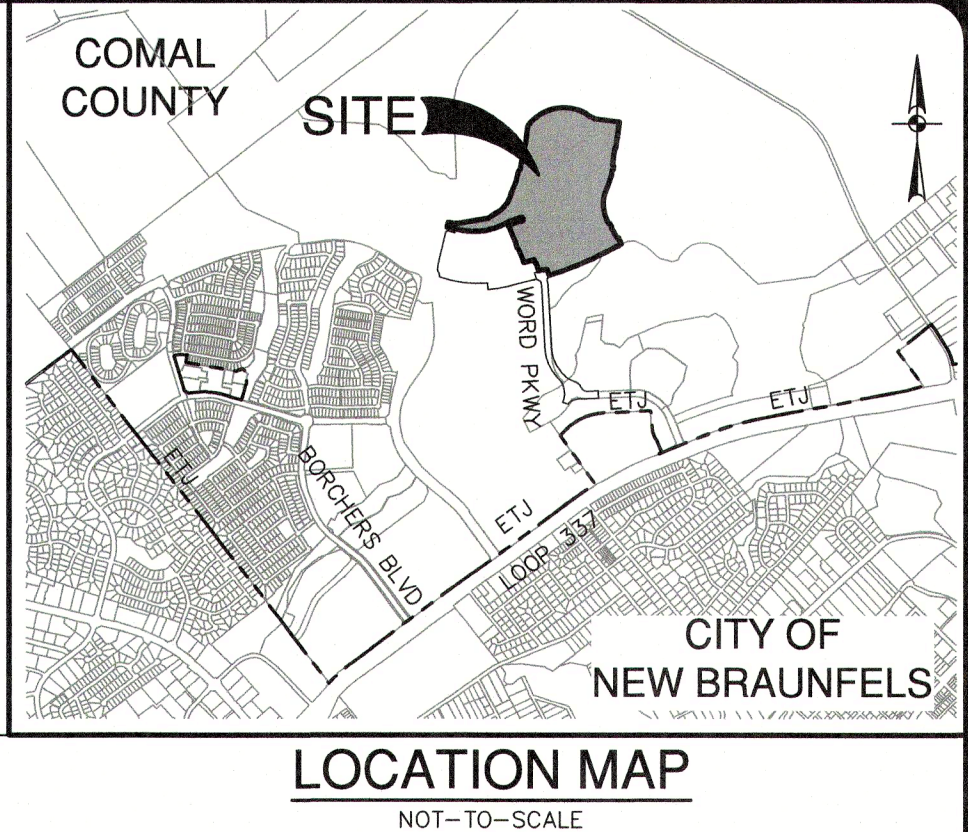
WASTEWATER (NBU JOB NO. WW-226996)

ITEM	UNIT	QUANTITY
8" SANITARY SEWER PIPE	LF	12,477
LUES	EA	215
6" WASTEWATER SERVICE	EA	215
48" MANHOLES	EA	62

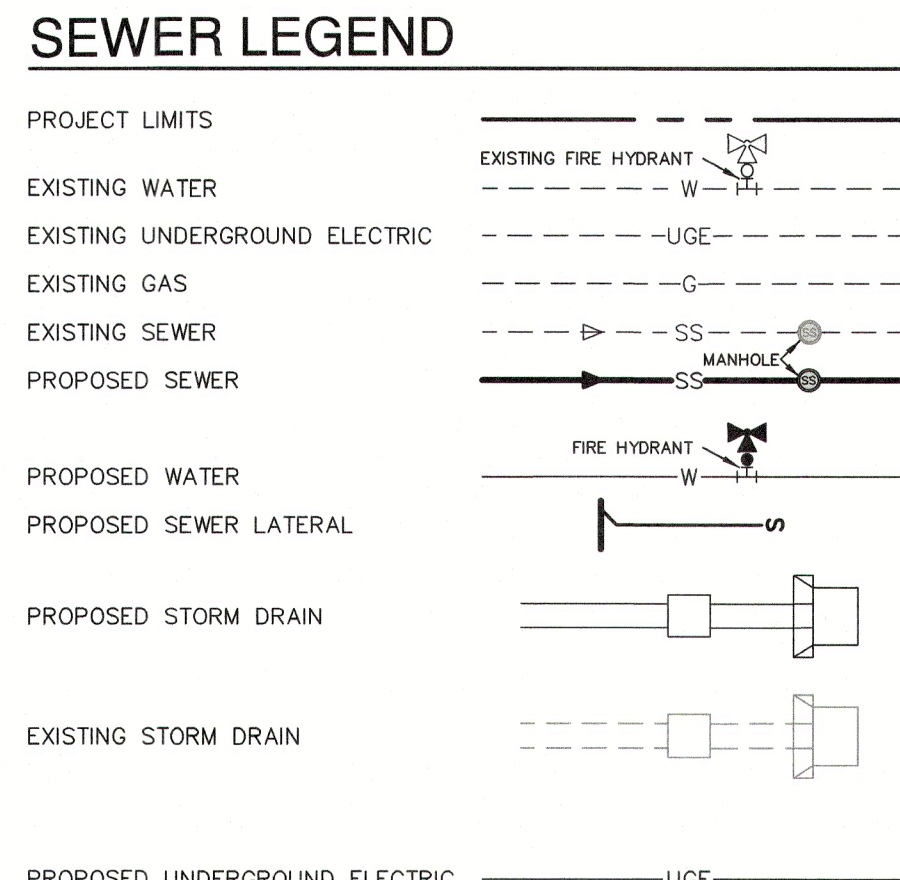
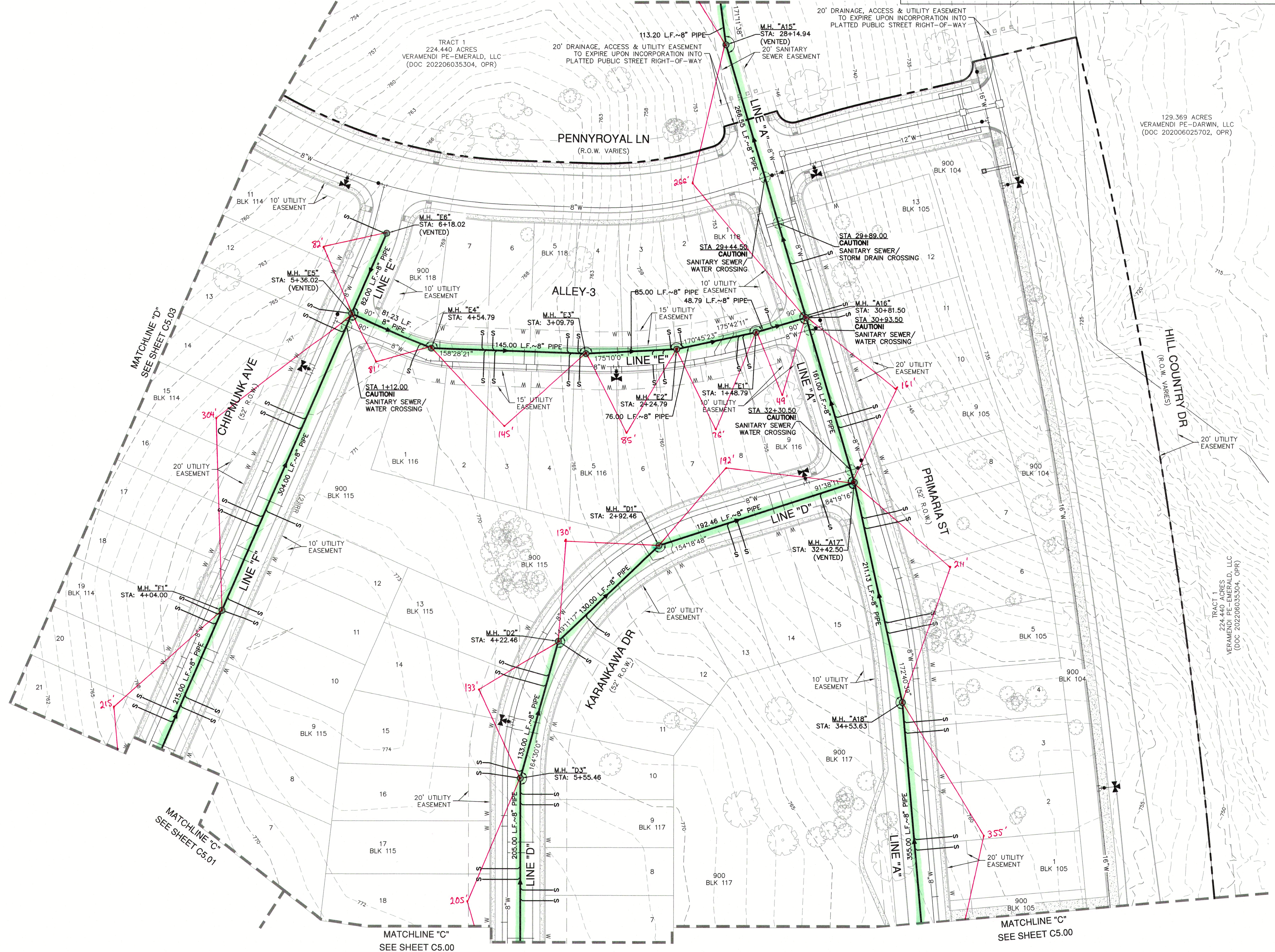
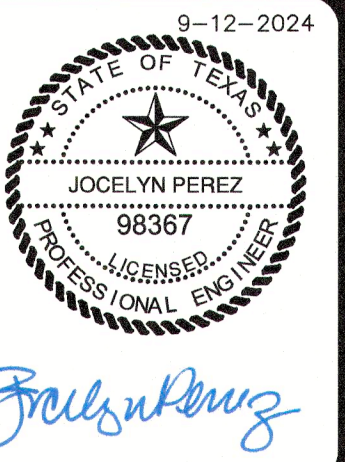


BENCHMARKS

HORIZONTAL AND VERTICAL CONTROL POINTS			
Point #	Northing	Easting	Full Description
10300	1381525.76	2237967.00	787.38 SET I.R. REDCAP (TRAV)
10301	13816937.43	2237678.90	782.13 SET I.R. REDCAP (TRAV)
10302	13816887.26	2236841.89	758.22 SET I.R. REDCAP (TRAV)
10303	13817166.65	2236050.01	763.76 SET MAG NAIL (TRAV)
10304	13817949.35	2236263.15	751.35 SET MAG NAIL (TRAV)
10305	13817569.79	2237717.86	753.14 SET MAG NAIL (TRAV)



NO.	REVISION	DATE



FLOODPLAIN NOTE

1. NO PORTION OF ANY LOT ON THIS PROJECT IS WITHIN AN INDICATED SPECIAL FLOOD HAZARD ZONE ACCORDING TO THE FEMA FIRM MAP NO. 48091C0435F EFFECTIVE DATE 9/2/2009.

CITY OF NEW BRAUNFELS NOTES

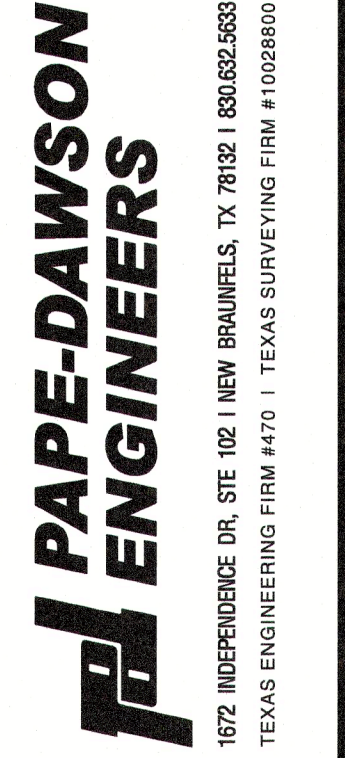
- NO VALVES, HYDRANTS, ETC. SHALL BE CONSTRUCTED WITHIN CURBS, SIDEWALKS, OR DRIVEWAYS.
- ALL UTILITIES TO BE CONSTRUCTED PRIOR TO STREETS.
- THIS PROJECT INCLUDES UTILITY INSTALLATIONS GREATER THAN 5- FEET IN DEPTH. DEEP TRENCHES POSE COMPACTION TESTING AND CONSTRUCTION CHALLENGES AND CITY METHODS FOR TESTING AND COMPACTION MAY NOT BE ACHIEVABLE. A UTILITY COMPACTION PLAN WILL BE REQUIRED AND MUST BE SUBMITTED FOR APPROVAL TO CITY PRIOR TO UTILITY INSTALLATION.
- UTILITY TRENCH COMPACTION - ALL UTILITY TRENCH COMPACTION TESTS WITHIN THE STREET PAVEMENT/SIDEWALK SECTION SHALL BE THE RESPONSIBILITY OF THE DEVELOPER'S GEOTECHNICAL ENGINEER. FILL MATERIAL SHALL BE PLACED IN UNIFORM LAYERS NOT TO EXCEED TWELVE INCHES THICK. DETERMINE THE MAXIMUM LIFT THICKNESS BASED ON THE ABILITY OF THE COMPACTION OPERATION AND EQUIPMENT USED TO MEET THE REQUIRED DENSITY. EACH LAYER OF MATERIAL SHALL BE COMPACTED TO A MINIMUM 95% DENSITY AND TESTED FOR DENSITY AND MOISTURE IN ACCORDANCE WITH TEST METHODS TEX-113-E, TEX-114-E, TEX-115-E. THE NUMBER AND LOCATION OF REQUIRED TESTS SHALL BE DETERMINED BY THE GEOTECHNICAL ENGINEER AND APPROVED BY THE CITY OF NEW BRAUNFELS STREET INSPECTOR. AT A MINIMUM, TESTS SHALL BE TAKEN EVERY 200 LF FOR EACH LIFT AND EVERY OTHER SERVICE LINE. UPON COMPLETION OF TESTING THE GEOTECHNICAL ENGINEER SHALL PROVIDE THE CITY OF NEW BRAUNFELS STREET INSPECTOR WITH ALL TESTING DOCUMENTATION AND A CERTIFICATION STATING THAT THE PLACEMENT OF FILL MATERIAL HAS BEEN COMPLETED IN ACCORDANCE WITH THE FIRM. ADDITIONAL TESTING MAY BE REQUESTED BY THE CITY OF NEW BRAUNFELS INSPECTOR.

CAUTION!!

CONTRACTOR SHALL BE REQUIRED TO LOCATE ALL PUBLIC OR PRIVATE UTILITIES INCLUDING BUT NOT LIMITING TO: WATER, SEWER, TELEPHONE AND FIBER OPTIC LINES, SITE LIGHTING ELECTRIC, SECONDARY ELECTRIC, PRIMARY ELECTRICAL DUCTBANKS, LANDSCAPE IRRIGATION FACILITIES, AND GAS LINES. ANY UTILITY CONFLICTS THAT ARISE SHOULD BE COMMUNICATED TO THE ENGINEER IMMEDIATELY AND PRIOR TO CONSTRUCTION. THE CONTRACTOR SHALL CONTACT TEXAS 811 A MINIMUM OF 48 HOURS PRIOR TO THE START OF CONSTRUCTION. ANY DAMAGE TO EXISTING UTILITIES SHALL BE THE SOLE RESPONSIBILITY OF THE CONTRACTOR AND THE REPAIR SHALL BE AT CONTRACTOR'S SOLE EXPENSE WHETHER THE UTILITY IS SHOWN ON THESE PLANS OR NOT.

TRENCH EXCAVATION SAFETY PROTECTION:

CONTRACTOR AND/OR CONTRACTOR'S INDEPENDENTLY RETAINED EMPLOYEE OR STRUCTURAL DESIGN/ GEOTECHNICAL/ SAFETY/EQUIPMENT CONSULTANT, IF ANY, SHALL REVIEW THESE PLANS AND ANY AVAILABLE GEOTECHNICAL INFORMATION AND THE ANTICIPATED INSTALLATION SITES WITHIN THE PROJECT WORK AREA IN ORDER TO IMPLEMENT CONTRACTOR'S TRENCH EXCAVATION SAFETY PROTECTION SYSTEMS, PROGRAMS AND/OR PROCEDURES FOR THE PROJECT DESCRIBED IN THE CONTRACT DOCUMENTS. THE CONTRACTOR'S IMPLEMENTATION OF THESE SYSTEMS, PROGRAMS AND/OR PROCEDURES SHALL PROVIDE FOR ADEQUATE TRENCH EXCAVATION SAFETY PROTECTION THAT COMPLY WITH AS A MINIMUM, OSHA STANDARDS FOR TRENCH EXCAVATIONS. SPECIFICALLY, CONTRACTOR AND/OR CONTRACTOR'S INDEPENDENTLY RETAINED EMPLOYEE OR SAFETY CONSULTANT SHALL IMPLEMENT A TRENCH SAFETY PROGRAM IN ACCORDANCE WITH OSHA STANDARDS GOVERNING THE PRESENCE AND ACTIVITIES OF INDIVIDUALS WORKING IN AND AROUND TRENCH EXCAVATION.

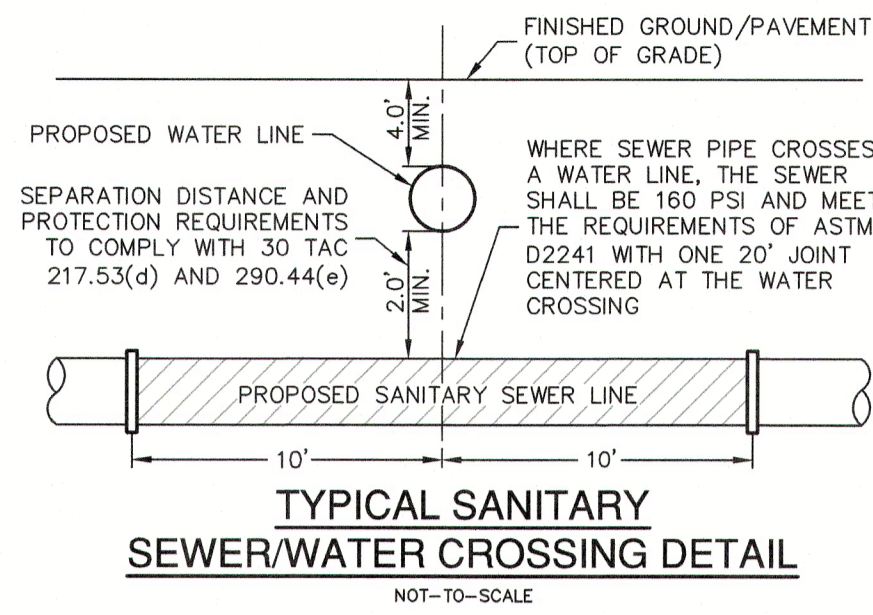


VERAMENDI PRECINCT 18 UNIT 1
NEW BRAUNFELS, TEXAS
OVERALL SANITARY SEWER PLAN

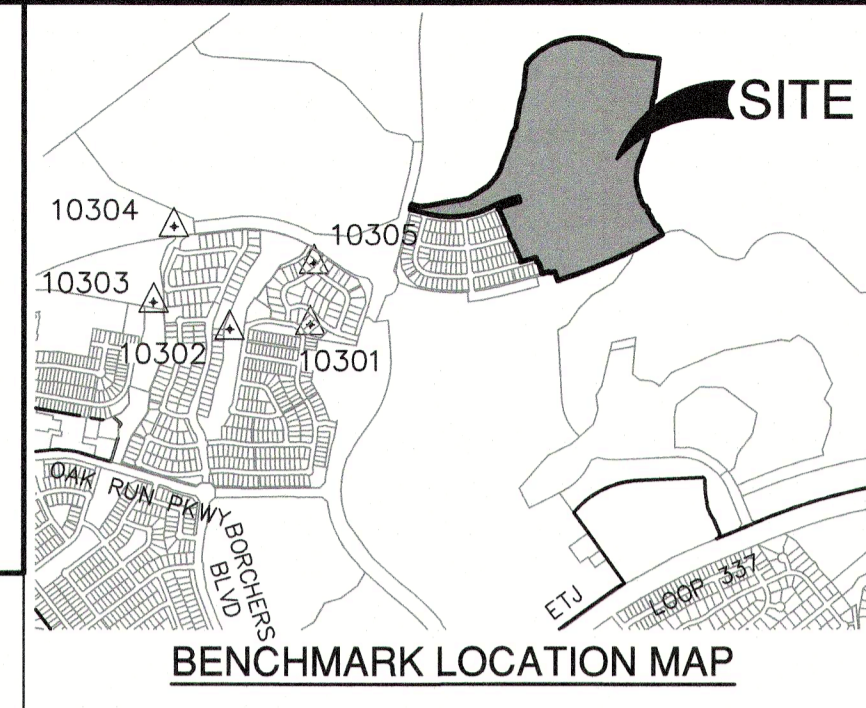
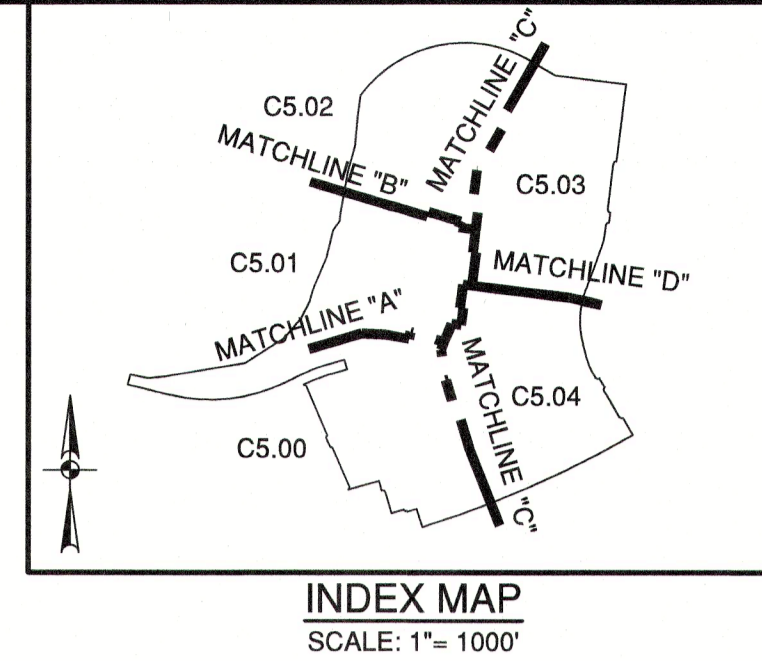
PLAT NO.	
JOB NO.	30001-66
DATE	07-03-2023
DESIGNER	GDL
CHECKED	GJ
DRAWN	BH
SHEET	C5.04

Date: Sep 11, 2024, 5:14pm User ID: jprovalve File: C:\Users\LOCAL...Temp\AutoPublish_R2460\SSDA-30001-66.dwg

FOR PERMIT

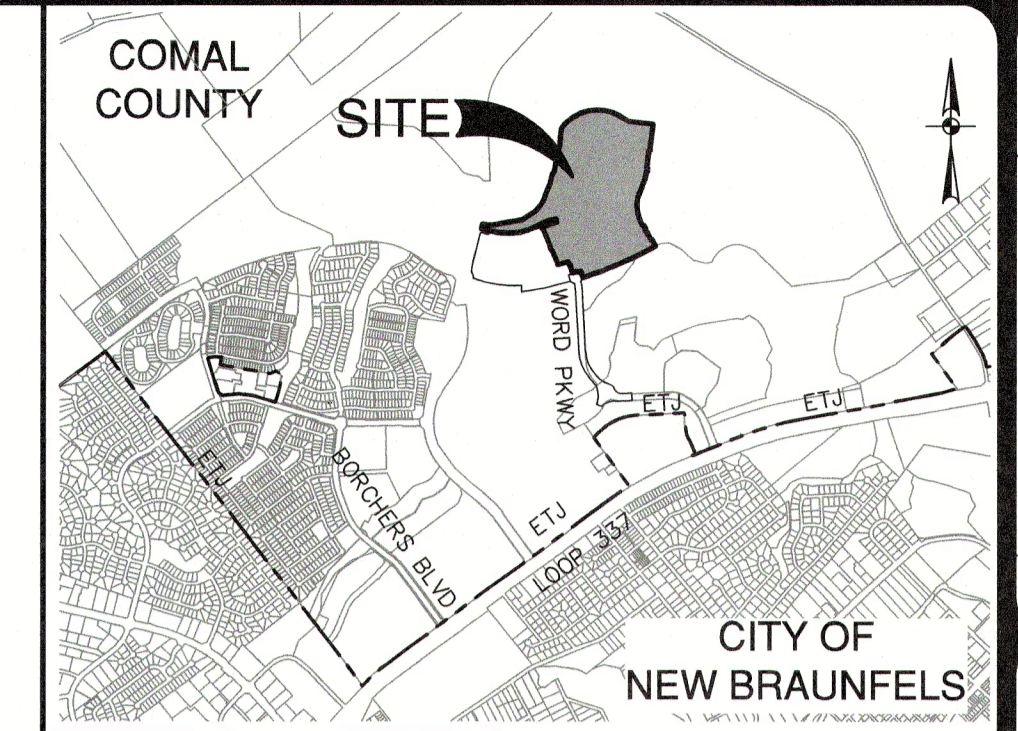


WASTEWATER (NBU JOB NO. WW-226996)		
ITEM	UNIT	QUANTITY
8" SANITARY SEWER PIPE	LF	12,477
LUES	EA	215
6" WASTEWATER SERVICE	EA	215
48" MANHOLES	EA	62

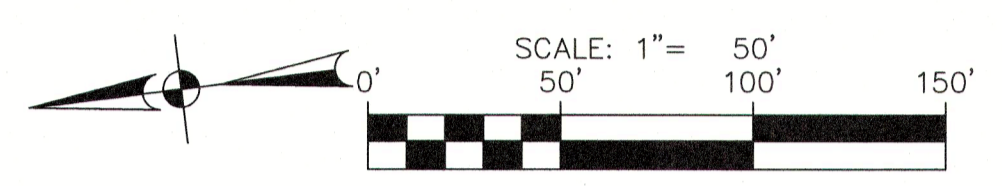
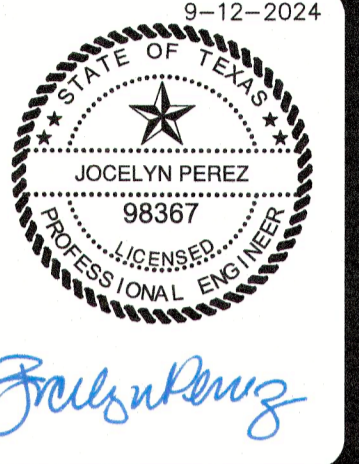


BENCHMARKS

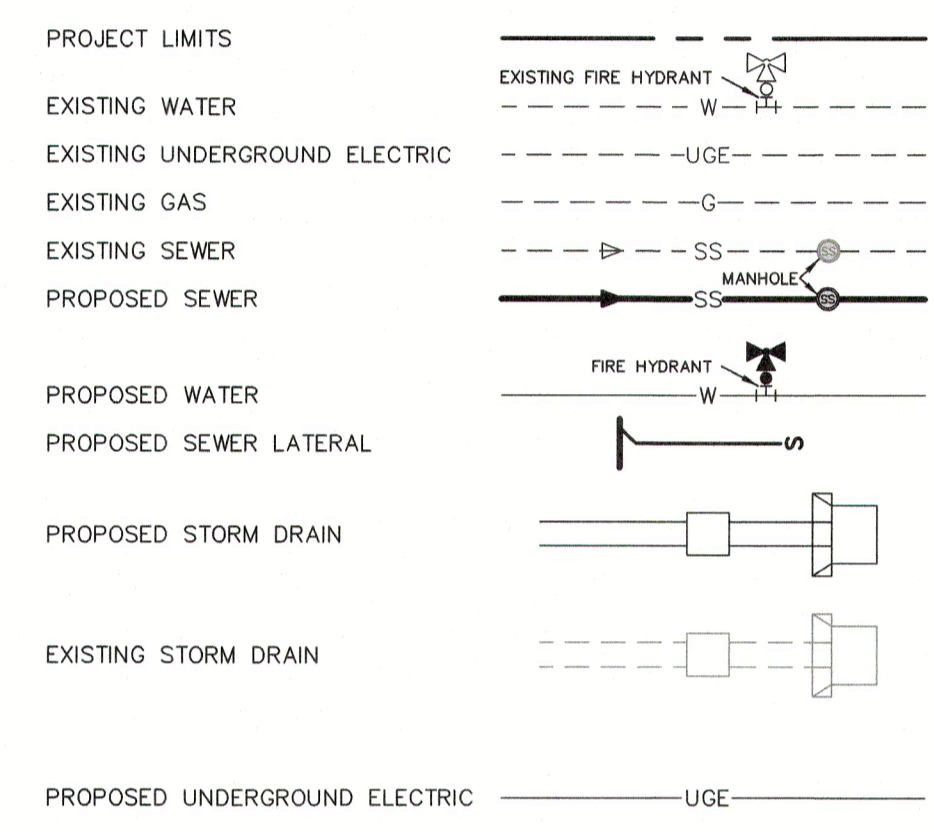
HORIZONTAL AND VERTICAL CONTROL POINTS				
Point #	Northing	Easting	Elevation	Full Description
10300	1381525.76	2237967.00	787.38	SET I.R. REDCAP (TRAV)
10301	13816937.43	2237878.90	782.13	SET I.R. REDCAP (TRAV)
10302	13816987.26	2236841.89	758.22	SET I.R. REDCAP (TRAV)
10303	13817166.65	2236050.01	763.76	SET MAG NAL (TRAV)
10304	13817949.35	2236263.15	751.35	SET MAG NAL (TRAV)
10305	13817568.78	2237717.86	753.14	SET MAG NAL (TRAV)



NO.	REVISION	DATE



SEWER LEGEND



FLOODPLAIN NOTE

1. NO PORTION OF ANY LOT ON THIS PROJECT IS WITHIN AN INDICATED SPECIAL FLOOD HAZARD ZONE ACCORDING TO THE FEMA FIRM MAP NO. 48091C0435F EFFECTIVE DATE 9/2/2009.

CITY OF NEW BRAUNFELS NOTES

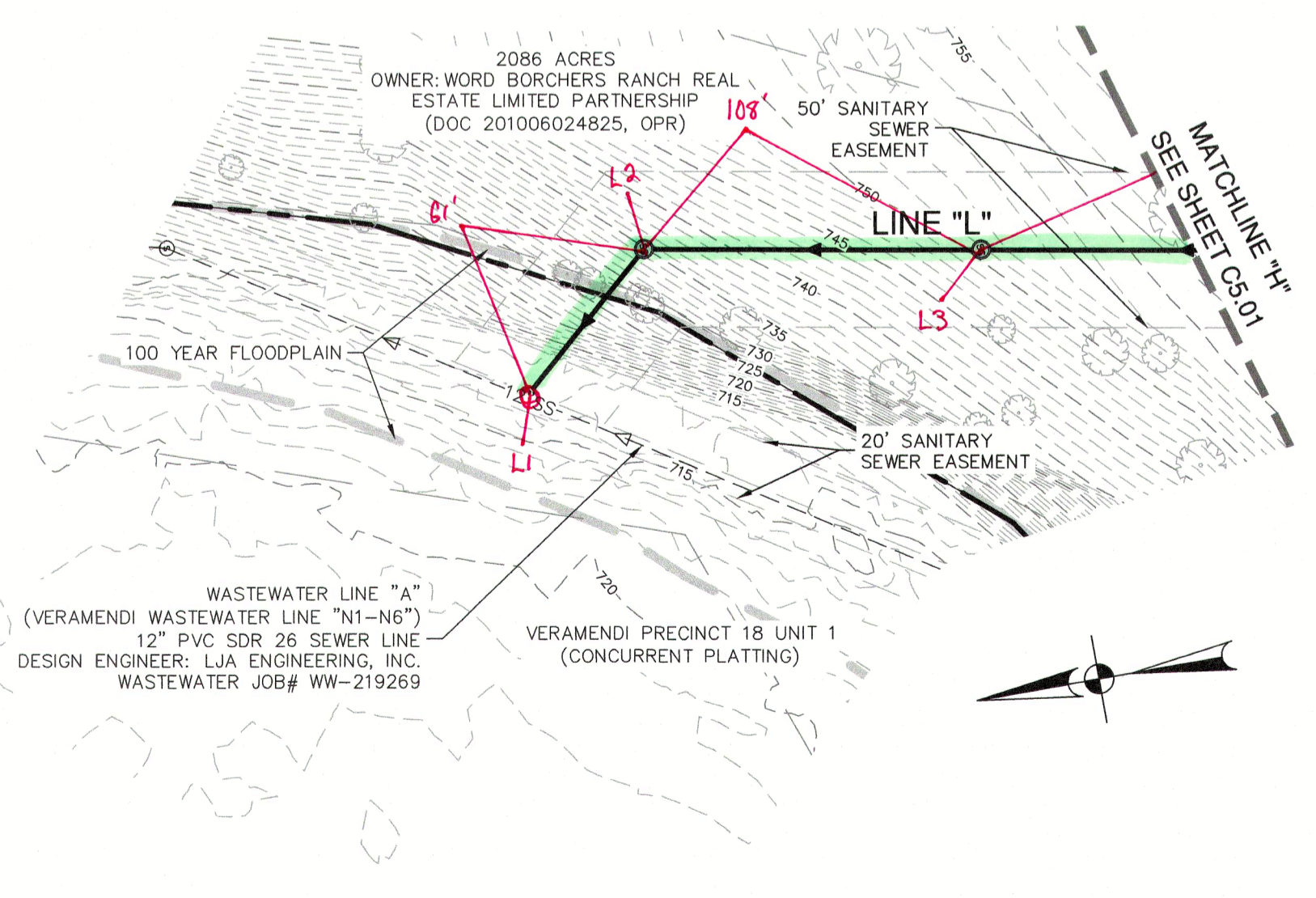
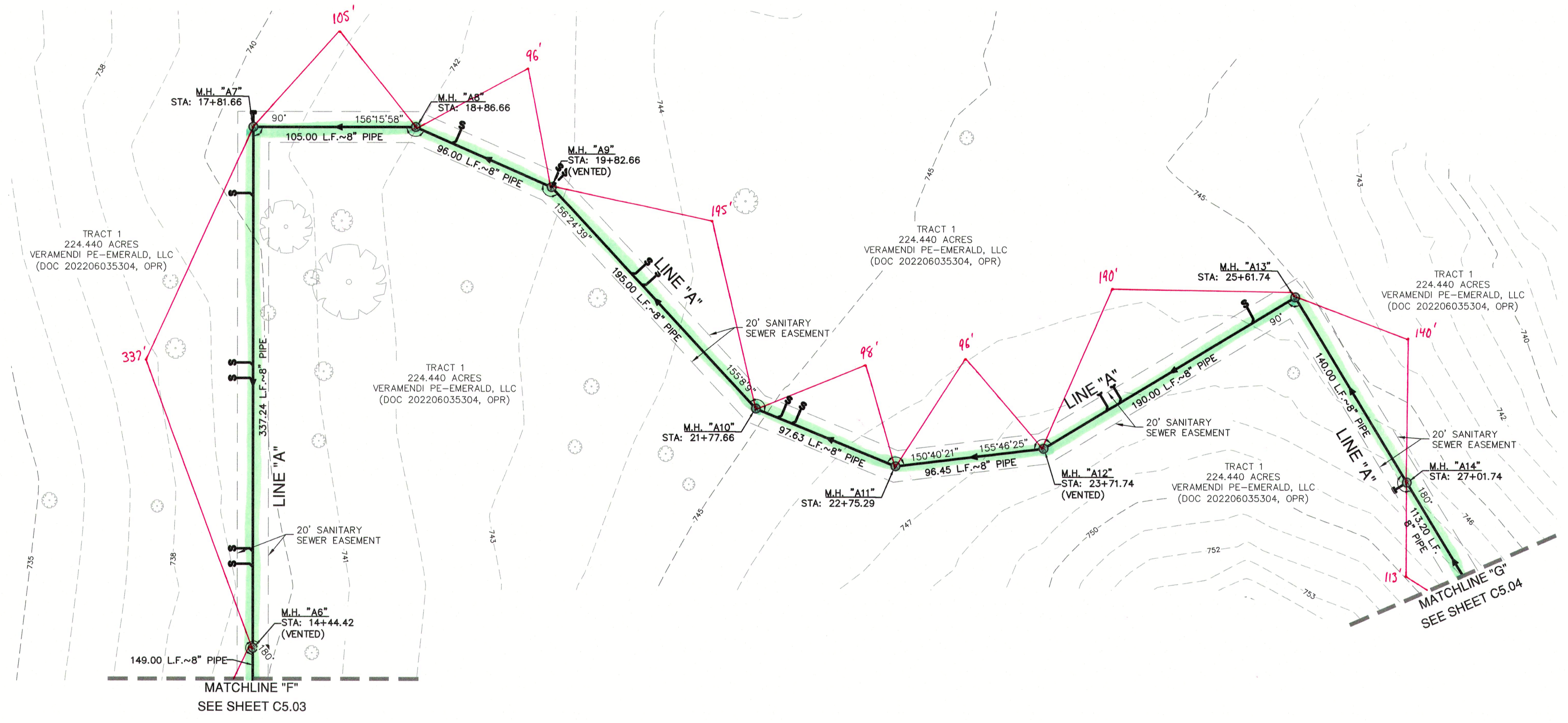
- NO VALVES, HYDRANTS, ETC. SHALL BE CONSTRUCTED WITHIN CURBS, SIDEWALKS, OR DRIVEWAYS.
- ALL UTILITIES TO BE CONSTRUCTED PRIOR TO STREETS.
- THIS PROJECT INCLUDES UTILITY INSTALLATIONS GREATER THAN 5- FEET IN DEPTH. DEEP TRENCHES POSE COMPACTION TESTING AND CONSTRUCTION CHALLENGES AND CITY METHODS FOR TESTING AND COMPACTION MAY NOT BE ACHIEVABLE. A UTILITY COMPACTION PLAN WILL BE REQUIRED AND MUST BE SUBMITTED FOR APPROVAL TO CITY PRIOR TO UTILITY INSTALLATION.
- UTILITY TRENCH COMPACTION - ALL UTILITY TRENCH COMPACTION TESTS WITHIN THE STREET PAVEMENT/SIDEWALK SECTION SHALL BE THE RESPONSIBILITY OF THE DEVELOPER'S GEOTECHNICAL ENGINEER. FILL MATERIAL SHALL BE PLACED IN UNIFORM LAYERS NOT TO EXCEED TWELVE INCHES (12") THICK. DETERMINE THE MAXIMUM LIFT THICKNESS BASED ON THE ABILITY OF THE COMPACTING OPERATION AND EQUIPMENT USED TO MEET THE REQUIRED DENSITY. EACH LAYER OF MATERIAL SHALL BE COMPACTED TO A MINIMUM 95% DENSITY AND TESTED FOR DENSITY AND MOISTURE IN ACCORDANCE WITH TEST METHODS TEX-113-E, TEX-114-E, TEX-115-E. THE NUMBER AND LOCATION OF REQUIRED TESTS SHALL BE DETERMINED BY THE GEOTECHNICAL ENGINEER AND APPROVED BY THE CITY OF NEW BRAUNFELS STREET INSPECTOR WITH ALL TESTING DOCUMENTATION AND A CERTIFICATION STATING THAT THE PLACEMENT OF FILL MATERIAL HAS BEEN COMPLETED IN ACCORDANCE WITH THE PLANS. ADDITIONAL DENSITY TESTS MAY BE REQUESTED BY THE CITY OF NEW BRAUNFELS INSPECTOR.

CAUTION!!

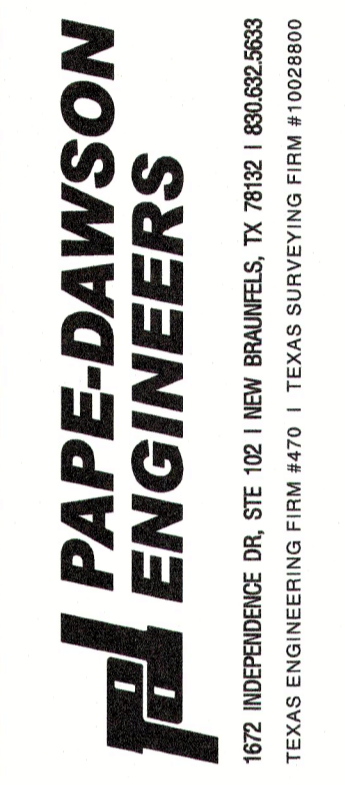
CONTRACTOR SHALL BE REQUIRED TO LOCATE ALL PUBLIC OR PRIVATE UTILITIES INCLUDING BUT NOT LIMITING TO: WATER, SEWER, TELEPHONE AND FIBER OPTIC LINES, SITE LIGHTING ELECTRIC, SECONDARY ELECTRIC, PRIMARY ELECTRICAL DUCTWORK, IRRIGATION FACILITIES, AND GAS LINES. ANY UTILITY CONFLICTS THAT ARISE SHOULD BE COMMUNICATED TO THE ENGINEER IMMEDIATELY AND PRIOR TO CONSTRUCTION. THE CONTRACTOR SHALL CONTACT "TEXAS 811" A MINIMUM OF 48 HOURS PRIOR TO THE START OF CONSTRUCTION. ANY DAMAGE TO EXISTING UTILITIES SHALL BE THE SOLE RESPONSIBILITY OF THE CONTRACTOR AND THE REPAIR SHALL BE AT CONTRACTOR'S SOLE EXPENSE WHETHER THE UTILITY IS SHOWN ON THESE PLANS OR NOT.

TRENCH EXCAVATION SAFETY PROTECTION:

CONTRACTOR AND/OR CONTRACTOR'S INDEPENDENTLY RETAINED EMPLOYEE OR STRUCTURAL DESIGN/ GEOTECHNICAL/ SAFETY/EQUIPMENT CONSULTANT, IF ANY, SHALL REVIEW THESE PLANS AND ANY AVAILABLE GEOTECHNICAL INFORMATION AND THE ANTICIPATED INSTALLATION SITES WITHIN THE PROJECT WORK AREA IN ORDER TO IMPLEMENT CONTRACTOR'S TRENCH EXCAVATION SAFETY PROTECTION SYSTEMS, PROGRAMS AND /OR PROCEDURES FOR THE PROJECT DESCRIBED IN THE CONTRACT DOCUMENTS. THE CONTRACTOR'S IMPLEMENTATION OF THESE SYSTEMS, PROGRAMS AND/OR PROCEDURES SHALL PROVIDE FOR ADEQUATE TRENCH EXCAVATION SAFETY PROTECTION THAT COMPLY WITH AS A MINIMUM, OSHA STANDARDS FOR TRENCH EXCAVATIONS. SPECIFICALLY, CONTRACTOR AND/OR CONTRACTOR'S INDEPENDENTLY RETAINED EMPLOYEE OR SAFETY CONSULTANT SHALL IMPLEMENT A TRENCH SAFETY PROGRAM IN ACCORDANCE WITH OSHA STANDARDS GOVERNING THE PRESENCE AND ACTIVITIES OF INDIVIDUALS WORKING IN AND AROUND TRENCH EXCAVATION.



Date: Sep 10, 2024, 8:52am, User: J... File: P:\3000\AVEN\Design\Civil\SS04-3000-66.dwg



VERAMENDI PRECINCT 18 UNIT 1
NEW BRAUNFELS, TEXAS
OVERALL SANITARY SEWER PLAN

PLAT NO.	
JOB NO.	30001-66
DATE	07-03-2023
DESIGNER	GDL
CHECKED	GH
DRAWN	BH
SHEET	C5.05

FOR PERMIT