

ALL CUSTOMER INSTALLATIONS REQUIRE INSPECTION BY NBU.

UNDERGROUND CONDUIT TO BE INSTALLED ACCORDING TO NBU SPECIFICATION EU-910. **CONDUIT TO BE SIZED BY NBU** AND HAVE 1" PROJECTION ABOVE CONCRETE, 36" RADIUS, 90° SWEEPS. PULL STRING TO BE INSTALLED BY CUSTOMER IN EACH CONDUIT.

COPPER-CLAD GROUND RODS, 5/8" X 8', 2 REQUIRED, TO HAVE 4" PROJECTION ABOVE TOP ON CONCRETE.

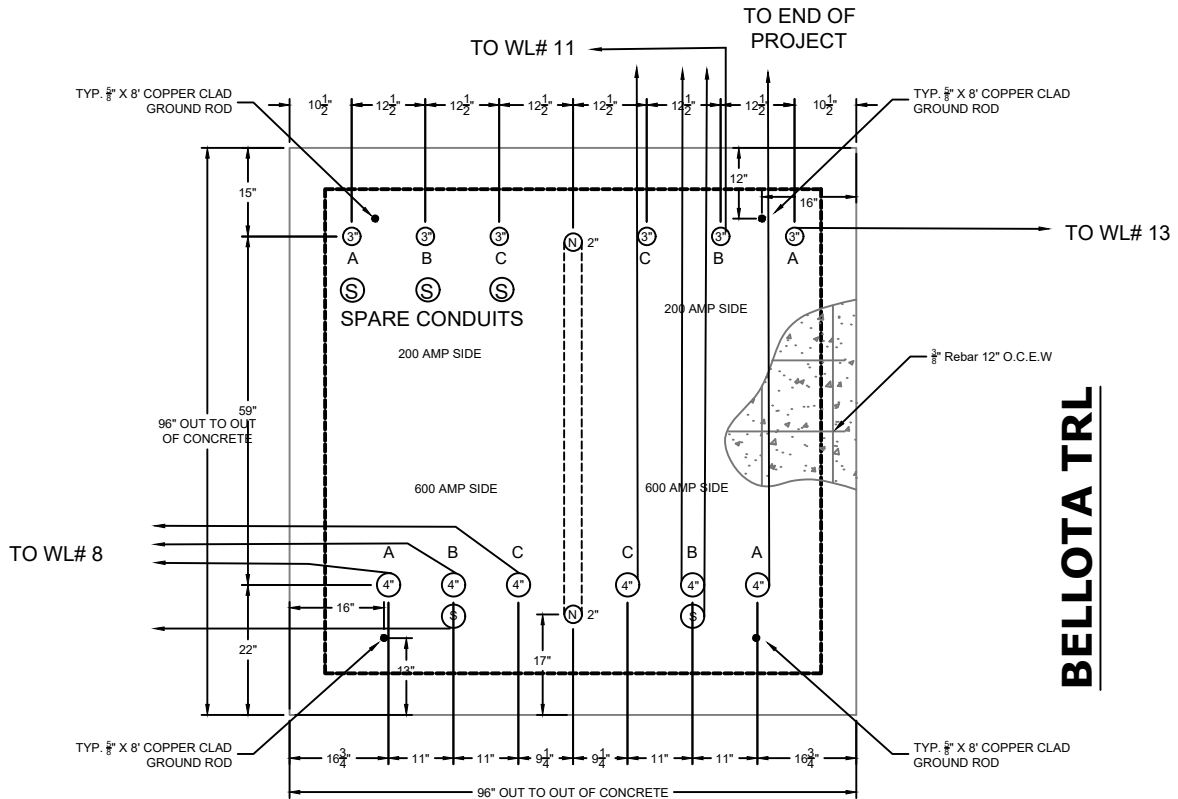
CONCRETE TO BE MIN. 3000 PSI.

TOP VIEW

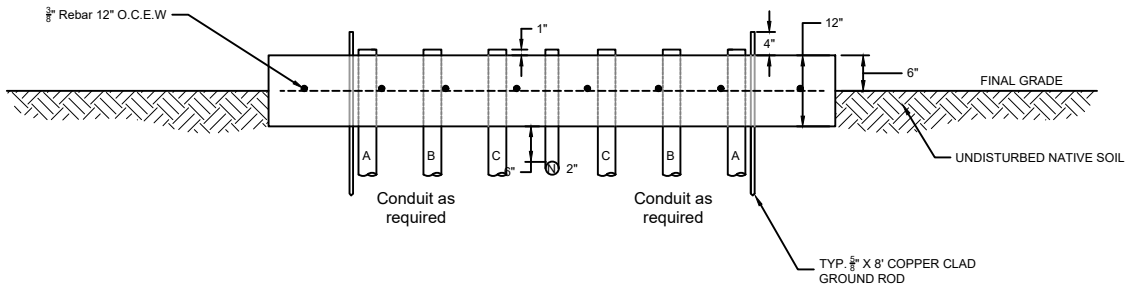
A, B, C = AØ, BØ, CØ  
RESPECTIVELY

(S) = SPARE CONDUIT

(N) = NEUTRAL BUSS CONDUIT



## SENDERO VW



COMPACTED TxDOT GRADE 4, TYPE A,  
FLEXIBLE BASE MATERIAL, OR OTHER  
APPROVED MATERIAL FROM BOTTOM  
OF TRENCH TO BOTTOM OF PAD.



Electric Engineering  
355 FM 306  
PO Box 310289  
New Braunfels, TX 78131-0289  
830-608-8951

PSE-9 SWITCH GEAR FOUNDATION  
GU-922 WL# 12

ISSUED

02-19-2025

SCALE

NTS

DRAWING BY

A. OWEN